

**Passenger Transport Statistics (PT)**  
March 2014. *Provisional data*

**The number of passengers using public transport increases 5.8% in March, as compared with the same month of the previous year**

**City transport increases 8.4% in the annual rate and inter-city transport increases 1.9%**

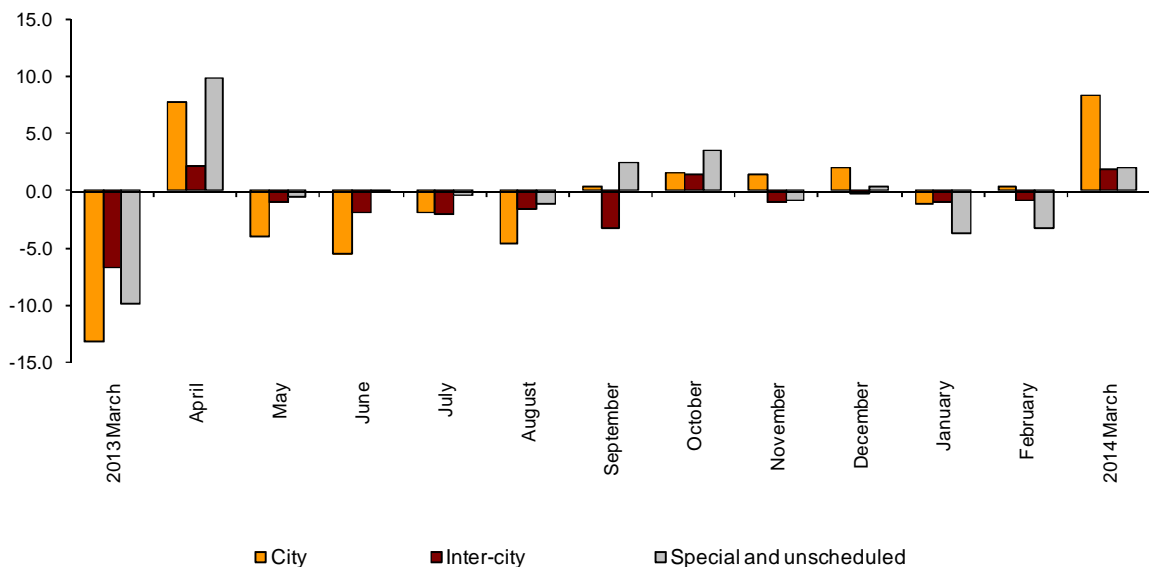
**Passengers transport evolution**

More than 401.0 million passengers used public transport in March, 5.8% more than in the same month of 2013.

City transport increased 8.4% and inter-city transport 1.9%. Within the inter-city transport, bus transport was the only one that increases, with an annual rate of 5.7%.

In order to allow a good interpretation of the rates of this month, it is essential to take into account that in 2013 Easter took place in March, whereas in 2014 it took place in April.

**Annual evolution of passengers transport**  
Type of transport



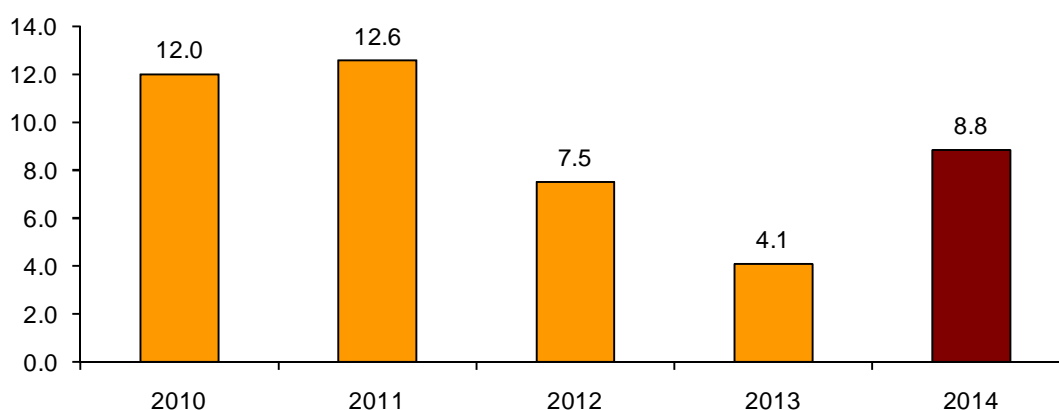
**Passengers transport annual evolution, by type of transport**

	City	Inter-city	Special and unscheduled
2013 March	-13.2	-6.7	-9.8
April	7.8	2.1	9.9
May	-4.1	-0.9	-0.5
June	-5.5	-1.8	-0.1
July	-1.9	-2.1	-0.4
August	-4.7	-1.6	-1.1
September	0.3	-3.2	2.5
October	1.5	1.5	3.5
November	1.4	-0.9	-0.8
December	2.1	-0.3	0.3
2014 January	-1.2	-0.9	-3.7
February	0.4	-0.8	-3.2
March	8.4	1.9	2.0

**Monthly rate evolution<sup>1</sup>**

The variation rate for the number of passengers on public transport in March, as compared with February, was 8.8%.

**Evolution of the monthly rate  
(month-on-month variation for March as compared with February)**



<sup>1</sup> In order to contribute to the analysis and interpretation of the data, this section has been added including the evolution of the monthly rate for the number of users of public transport in recent years. The month-on-month rates of this type of series may have a seasonal behaviour; therefore it is recommended to evaluate them in relation to the item of data for the same month in previous years.

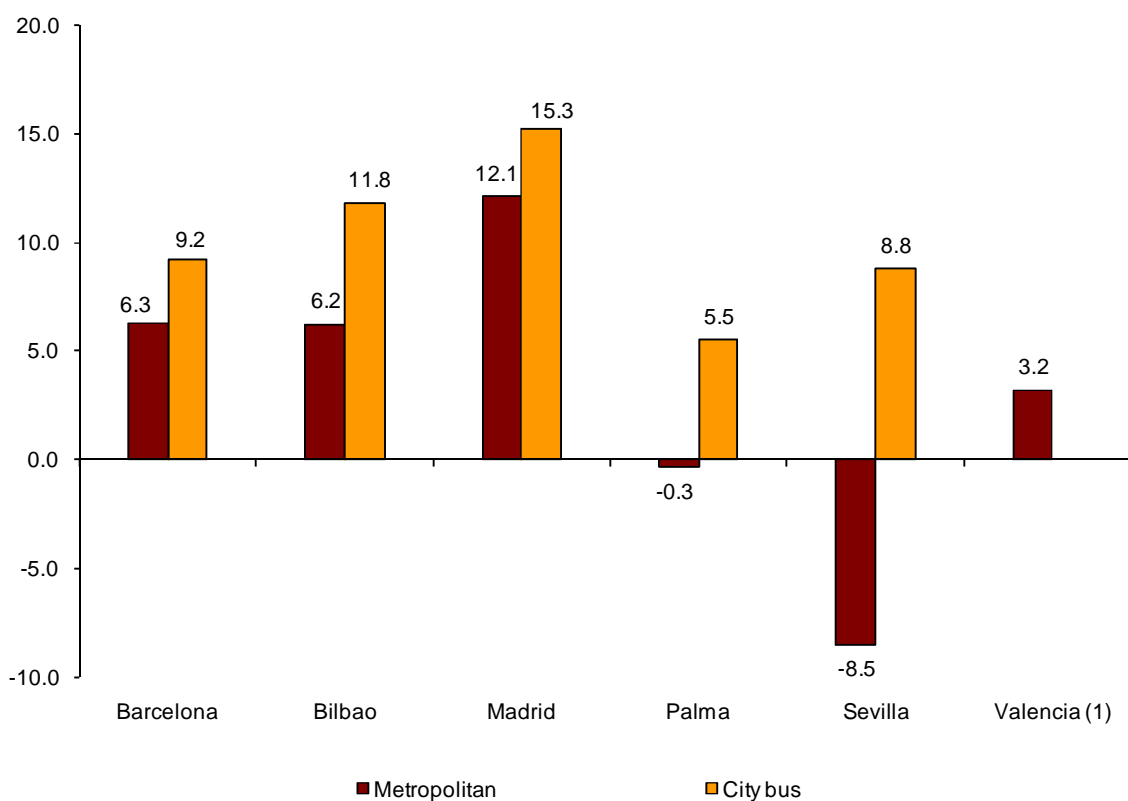
### City transport

City transport was used by more than 246.3 million passengers in March, 8.4% more than in the same month of 2013.

Metropolitan transport registered an increase of 8.8% and bus transport increased by 8.1%.

Metropolitan transport registered an increase in all cities, except for Palma (-0.3%) and Sevilla (-8.5%). In turn, bus transport increased in all cities using metropolitan transport.

**Annual rate of city transport passengers in cities with a Metropolitan**

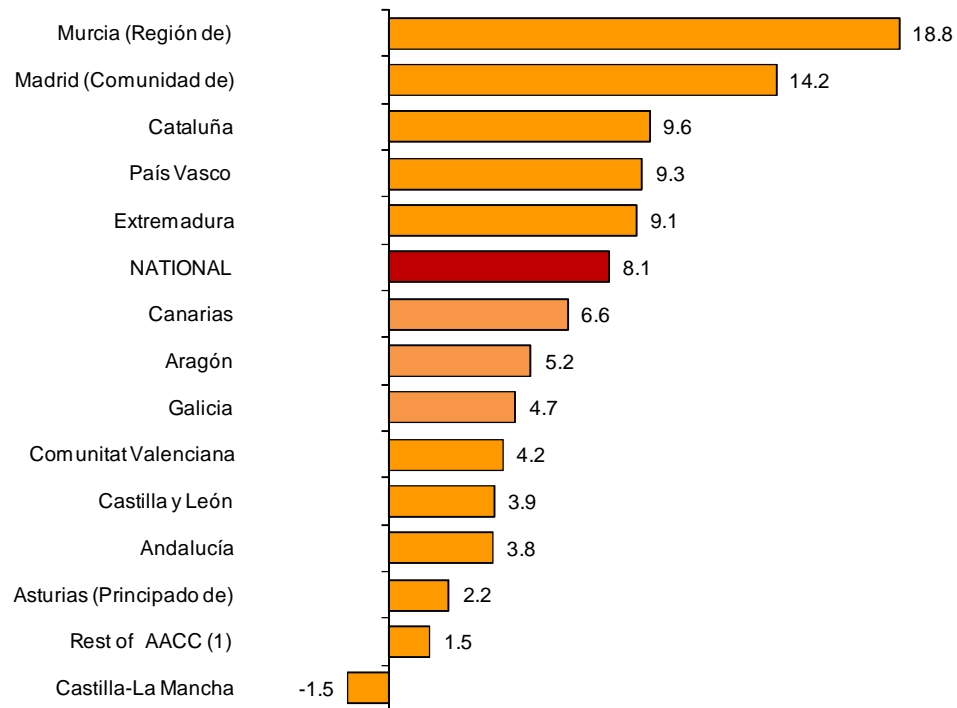


<sup>(1)</sup> The publication of the city transport by bus in Valencia is not allowed

The number of passengers of bus transport increased in all Autonomous Communities, except for Castilla-La Mancha (-1.5%).

In turn, Región de Murcia (18.8%) and Comunidad de Madrid (14.2%) recorded the greatest increases.

## Annual rates of the number of passengers City transport by bus



(1) In order to protect statistical secrecy, the passengers of the Autonomous Communities of Illes Balears, Cantabria, Comunidad Foral de Navarra and La Rioja and of the Autonomous Cities of Ceuta and Melilla have been grouped.

### Inter-city transport

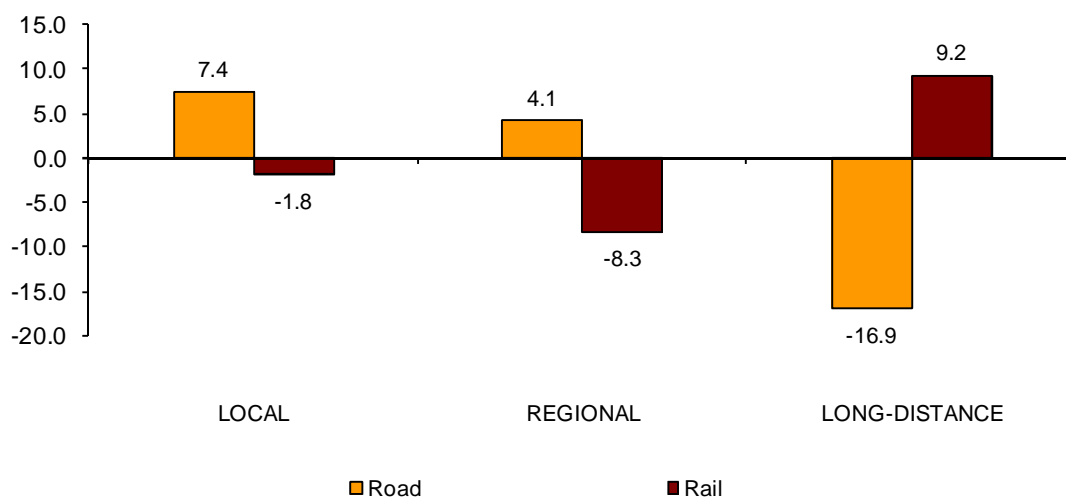
More than 108.0 million passengers used inter-city transport in March, indicating a 1.9% increase, as compared with the same month of 2013.

By type of inter-city transport, only bus transport increased this month (5.7% as compared with March 2013). In turn, the number of passengers decreased by 1.7% in rail transport, and it did so by 1.9% in air transport and by 14.4% in sea transport.

Local distance passengers increased 7.4% for bus transport and decreased 1.8% for rail transport. Regional distance passengers increased 4.1% for bus transport and decreased 8.3% for rail transport.

Finally, long distance passengers decreased 16.9% in bus transport, while its number increased 9.2% in rail transport.

**Annual rate of the number of passengers  
Inter-city transport by type of transport and distance**



### Special and unscheduled transport

Over 46.5 million passengers used special and unscheduled transport in March, indicating an increase of 2.0% in the annual rate.

The number of special transport passengers increased 2.1%, reaching over 33.6 million users. Within this, school transport increased 3.3%, and work transport decreased 1.5%.

In turn, unscheduled transport increased 1.8%, as compared with the same month of the previous year, reaching more than 12.9 million passengers.

## Passenger Transport Statistics

March 2014

Provisional data

### 1. Passenger transport

	Passengers transported (thousands)	% variation	
		Annual	Year-to-date average
BY TYPE OF TRANSPORT	401,023	5.8	1.3
City transport	246,389	8.4	2.5
Inter-city transport	108,073	1.9	0.0
Special and unscheduled transport	46,562	2.0	-1.6

### 2. City transport

	Passengers transported (thousands)	% variation	
		Annual	Year-to-date average
CITY TRANSPORT	246,389	8.4	2.5
Metropolitan	100,973	8.8	2.4
Bus <sup>(1)</sup>	145,416	8.1	2.6

<sup>(1)</sup> This includes trams and funiculars

## 2.1 City transport in cities with a Metropolitan

		Passengers transported (thousands)	% variation	
			Annual	Year-to-date average
Barcelona	City bus	17,027	9.2	4.2
	Metropolitan	33,131	6.3	2.7
Bilbao	City bus	3,253	11.8	6.6
	Metropolitan	7,827	6.2	1.2
Madrid	City bus	37,889	15.3	5.3
	Metropolitan	51,869	12.1	2.8
Palma	City bus	3,013	5.5	1.8
	Metropolitan	126	-0.3	0.0
Sevilla	City bus	7,080	8.8	6.5
	Metropolitan	1,264	-8.5	-3.7
Valencia	City bus	(1)	(1)	(1)
	Metropolitan	6,757	3.2	1.3

(1) Publication thereof is not allowed

## 2.2 City bus transport

	Passengers transported (thousands)	% variation	
		Annual	Year-to-date average
NATIONAL	145,416	8.1	2.6
Andalucía	18,862	3.8	1.1
Aragón	10,587	5.2	1.6
Asturias, Principado de	2,884	2.2	1.2
Canarias	4,614	6.6	1.8
Castilla y León	5,916	3.9	-0.8
Castilla - La Mancha	1,738	-1.5	-5.6
Cataluña	23,569	9.6	4.3
Comunitat Valenciana	10,859	4.2	1.4
Extremadura	992	9.1	1.8
Galicia	5,047	4.7	1.0
Madrid, Comunidad de	42,462	14.2	4.5
Murcia, Región de	1,613	18.8	9.9
País Vasco	7,333	9.3	5.0
Rest of AACC <sup>(1)</sup>	8,939	1.5	-2.1

<sup>(1)</sup> In order to protect statistical secrecy, the passengers of the Autonomous Communities of Illes Balears, Cantabria, Comunidad Foral de Navarra and La Rioja and of the Autonomous Cities of Ceuta and Melilla have been grouped

### 3. Inter-city transport

	Passengers transported (thousands)	% variation	
		Annual	Year-to-date average
<b>INTER-CITY TRANSPORT</b>	108,073	1.9	0.0
Road	55,590	5.7	1.2
Local	38,265	7.4	1.5
Regional	16,108	4.1	1.5
Long-distance	1,217	-16.9	-10.7
Rail <sup>(1)</sup>	49,715	-1.7	-1.0
Local rail	44,805	-1.8	-1.4
Regional rail	2,573	-8.3	-6.4
Long-distance rail	2,338	9.2	14.6
Air (domestic)	2,248	-1.9	-4.4
Sea (cabotage)	520	-14.4	-2.8

<sup>(1)</sup> Local and regional rail include all rail operators and Long-distance rail only includes RENFE

### 4. Special and unscheduled transport

	Passengers transported (thousands)	% variation	
		Annual	Year-to-date average
<b>SPECIAL AND UNSCHEDULED TRANSPORT</b>	46,562	2.0	-1.6
Special	33,613	2.1	-2.7
School	25,739	3.3	-2.6
Work	7,874	-1.5	-2.9
Unscheduled	12,948	1.8	2.3

For further information see INEbase - [www.ine.es/en/](http://www.ine.es/en/) All press releases at: [www.ine.es/prensa/prensa\\_en.htm](http://www.ine.es/prensa/prensa_en.htm)

**Press Office:** Telephone numbers: 91 583 93 63 / 94 08 – Fax: 91 583 90 87 - [gprensa@ine.es](mailto:gprensa@ine.es)

**Information Area:** Telephone number: 91 583 91 00 – Fax: 91 583 91 58 – [www.ine.es/infoine](http://www.ine.es/infoine)