

Passenger Transport Statistics (PT)
March 2015. *Provisional data*

The number of passengers using public transport decreases by 0.2% in March, as compared with the same month of the previous year

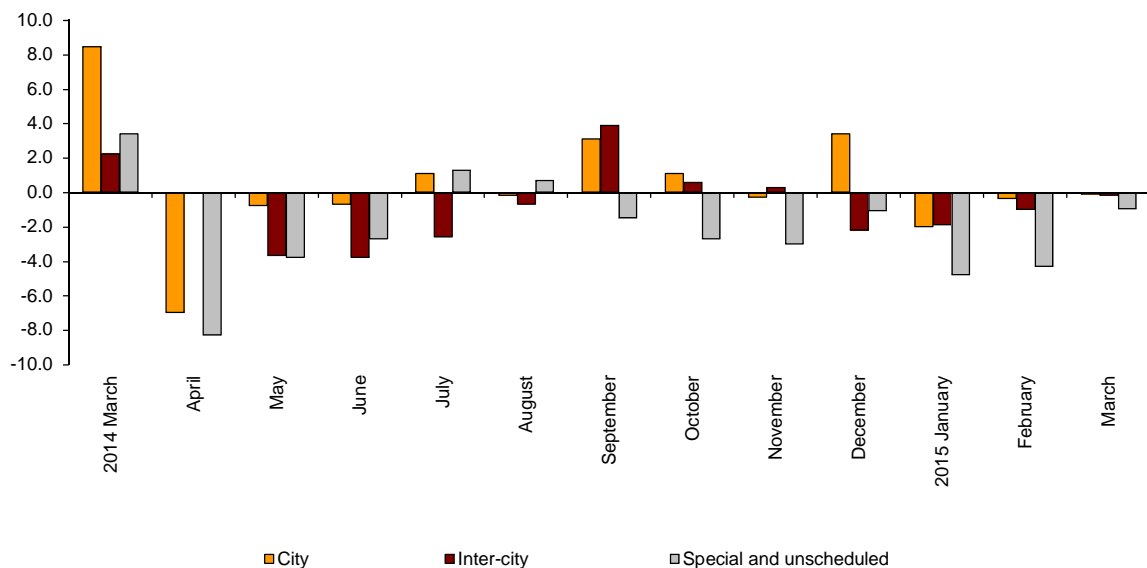
City transport decreases by 0.1% in the annual rate and inter-city transport decreases by 0.2%

Passengers transport evolution

More than 401.3 million passengers used public transport in March, 0.2% less than in the same month of 2014.

City transport decreased by 0.1% and inter-city transport decreased by 0.2% in the annual rate. Within the last one, bus transport was the one that recorded the greatest decrease, with a -0.5% rate.

Annual evolution of passengers transport
Type of transport



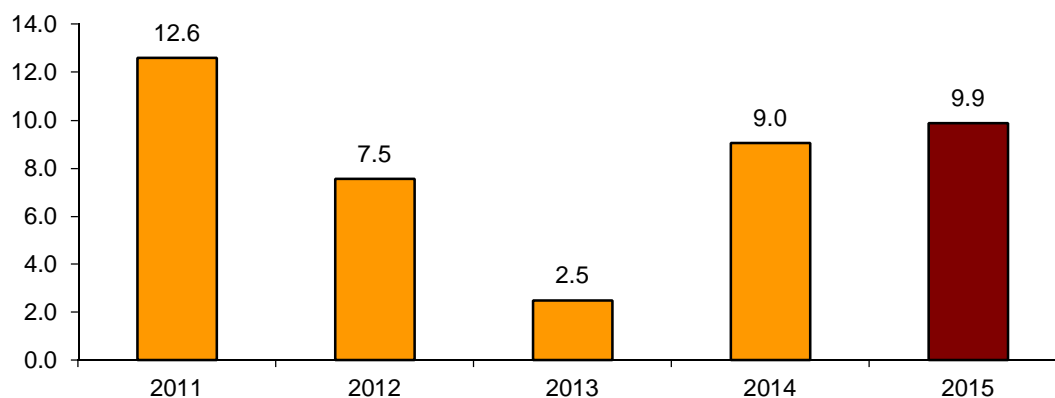
Passengers transport annual evolution, by type of transport

	City	Inter-city	Special and unschedule
2014 March	8.5	2.2	3.4
April	-7.0	0.0	-8.3
May	-0.8	-3.7	-3.8
June	-0.7	-3.8	-2.7
July	1.1	-2.6	1.3
August	-0.2	-0.7	0.7
September	3.1	3.9	-1.5
October	1.1	0.6	-2.7
November	-0.3	0.3	-3.0
December	3.4	-2.2	-1.1
2015 January	-2.0	-1.9	-4.8
February	-0.4	-1.0	-4.3
March	-0.1	-0.2	-1.0

Monthly rate evolution

The variation rate for the number of passengers on public transport in March 2015, as compared with February, was 9.9%. In order to contribute to the analysis and interpretation of data, the evolution of the monthly rate of public transport passengers in the last years is shown in the following chart.

**Evolution of the monthly rate
(month-on-month variation for March as compared with February)**



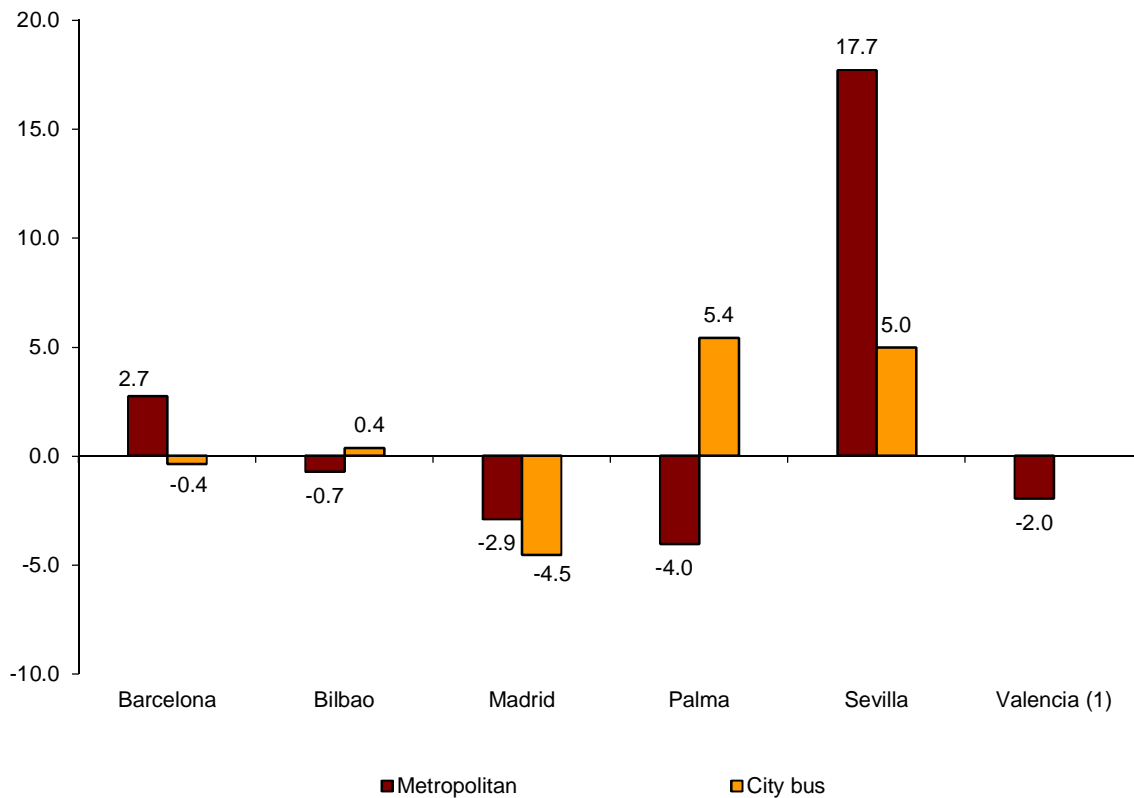
City transport

City transport was used by more than 246.3 million passengers in March, 0.1% less than in the same month of 2014.

Metropolitan transport registered a decrease of 0.6%, while bus transport increased by 0.2%.

Bus transport decreased in all cities except for Sevilla (5.0%) and Palma (5.4%). In turn, metropolitan transport registered the greatest decrease in Palma (-4.0%) and the greatest increase in Sevilla (17.7%).

Annual rate of city transport passengers in cities with a Metropolitan

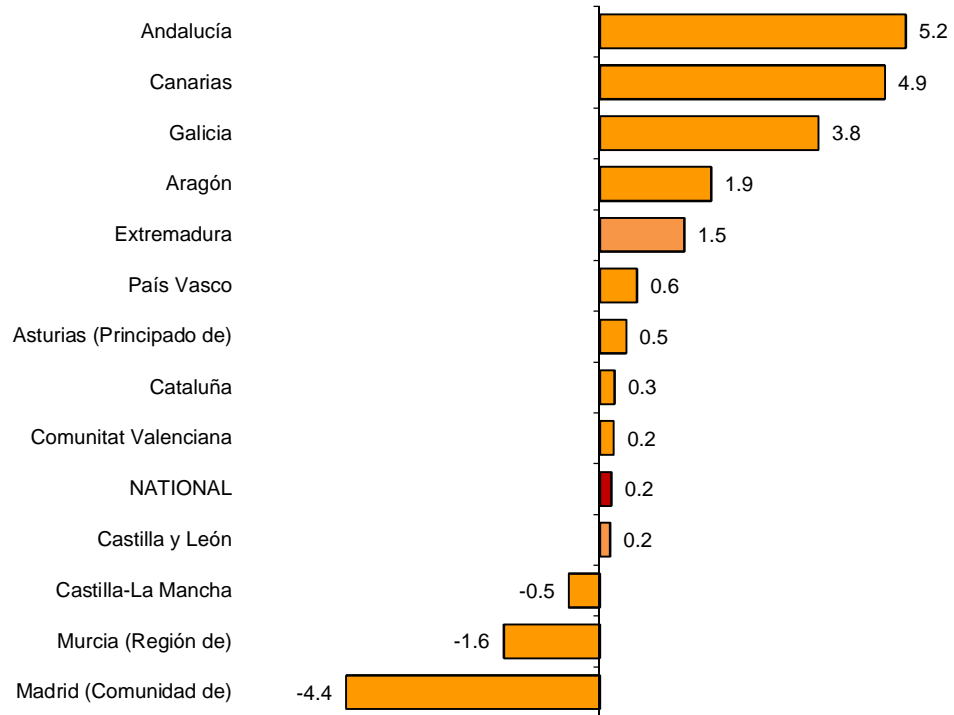


⁽¹⁾ The publication of the city transport by bus in Valencia is not allowed

The number of passengers of bus transport increased in all Autonomous Communities, except for Castilla-La Mancha (−0.5%), Región de Murcia (−1.6%) and Comunidad de Madrid (−4.4%).

Andalucía (5.2%), Canarias (4.9%) and Galicia (3.8%) were those that registered the greatest increases.

Annual rates of the number of passengers City transport by bus



(1) In order to protect statistical secrecy, data of the Autonomous Communities of Illes Balears, Cantabria, Comunidad Foral de Navarra and La Rioja and of the Autonomous Cities of Ceuta and Melilla are not published

Inter-city transport

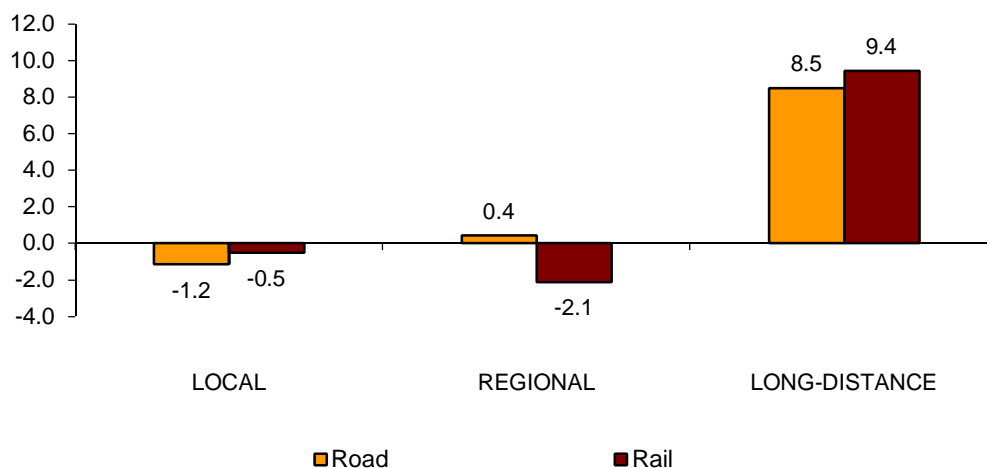
More than 108.2 million passengers used inter-city transport in March, indicating a 0.2% decrease as compared with the same month of 2014.

Both bus transport (-0.5%) and rail transport (-0.1%) decreased. In turn, air transport increased by 6.5%.

Local distance passengers dropped by 1.2% for bus transport and 0.5% for rail transport. Regional distance passengers increased 0.4% for bus transport and decreased 2.1% for rail transport.

Finally, long distance passengers increased 8.5% for bus transport and 9.4% for rail transport.

Annual rate of the number of passengers Inter-city transport by type of transport and distance



Special and unscheduled transport

More than 46.7 million passengers used special and unscheduled transport in March, indicating a decrease of 1.0% in the annual rate.

The number of special transport passengers decreased 3.7%, reaching more than 32.9 million users. Within this, school transport decreased 4.1%, and work transport did so by 2.1%.

In turn, unscheduled transport increased 6.1%, as compared with the same month of 2014, reaching more than 13.8 million passengers.

Passenger Transport Statistics

March 2015

Provisional data

1. Passenger transport

	Passengers transported (thousands)	% variation	
		Annual	Year-to-date average
BY TYPE OF TRANSPORT	401,313	-0.2	-1.1
City transport	246,370	-0.1	-0.8
Inter-city transport	108,207	-0.2	-1.0
Special and unscheduled transport	46,736	-1.0	-3.2

2. City transport

	Passengers transported (thousands)	% variation	
		Annual	Year-to-date average
CITY TRANSPORT	246,370	-0.1	-0.8
Metropolitan	100,399	-0.6	-0.4
Bus ⁽¹⁾	145,971	0.2	-1.1

⁽¹⁾ This includes trams and funiculars

2.1 City transport in cities with a Metropolitan

		Passengers transported (thousands)	% variation	
			Annual	Year-to-date average
Barcelona	City bus	16,964	-0.4	-2.1
	Metropolitan	34,038	2.7	1.9
Bilbao	City bus	3,265	0.4	-1.3
	Metropolitan	7,770	-0.7	-1.5
Madrid	City bus	36,169	-4.5	-3.6
	Metropolitan	50,358	-2.9	-1.8
Palma	City bus	3,177	5.4	1.6
	Metropolitan	121	-4.0	-1.1
Sevilla	City bus	7,433	5.0	2.9
	Metropolitan	1,488	17.7	9.9
Valencia	City bus	(1)	(1)	(1)
	Metropolitan	6,624	-2.0	-1.3

(1) Publication thereof is not allowed

2.2 Urban transport by bus by Autonomous City and Communiy

	Passengers transported (thousands)	% variation	
		Annual	Year-to-date average
NATIONAL	145,971	0.2	-1.1
Andalucía	20,233	5.2	4.0
Aragón	10,806	1.9	0.2
Asturias, Principado de	2,898	0.5	-4.4
Balears, Illes	(1)	(1)	(1)
Canarias	4,769	4.9	0.7
Cantabria	(1)	(1)	(1)
Castilla y León	5,928	0.2	-2.8
Castilla - La Mancha	1,710	-0.5	-3.6
Cataluña	23,626	0.3	-1.7
Comunitat Valenciana	10,904	0.2	-1.0
Extremadura	1,006	1.5	-4.7
Galicia	5,237	3.8	-0.8
Madrid, Comunidad de	40,577	-4.4	-3.7
Murcia, Región de	1,586	-1.6	-2.1
Navarra, Comunidad Foral de	(1)	(1)	(1)
País Vasco	7,380	0.6	-1.8
Rioja, La	(1)	(1)	(1)
Ceuta	(1)	(1)	(1)
Melilla	(1)	(1)	(1)

3. Inter-city transport

	Passengers transported (thousands)	% variation	
		Annual	Year-to-date average
INTER-CITY TRANSPORT	108,207	-0.2	-1.0
Road	55,644	-0.5	-1.5
Local	38,046	-1.2	-2.1
Regional	16,305	0.4	-0.6
Long-distance	1,294	8.5	3.1
Rail ⁽¹⁾	49,648	-0.1	-0.7
Local rail	44,572	-0.5	-1.3
Regional rail	2,518	-2.1	0.6
Long-distance rail	2,558	9.4	10.2
Air (domestic)	2,395	6.5	5.4
Sea (cabotage) ⁽²⁾	521	0.1	-0.2

⁽¹⁾ Local and regional rail include all rail operators and Long-distance rail only includes RENFE

⁽²⁾ Estimated data

4. Special and unscheduled transport

	Passengers transported (thousands)	% variation	
		Annual	Year-to-date average
SPECIAL AND UNSCHEDULED TRANSPORT	46,736	-1.0	-3.2
Special	32,933	-3.7	-5.4
School	25,064	-4.1	-5.9
Work	7,869	-2.1	-3.7
Unscheduled	13,803	6.1	3.4

For further information see INEbase - www.ine.es/en/ All press releases at: www.ine.es/prensa/prensa_en.htm

Press Office: Telephone numbers: 91 583 93 63 / 94 08 – Fax: 91 583 90 87 - gprensa@ine.es

Information Area: Telephone number: 91 583 91 00 – Fax: 91 583 91 58 – www.ine.es/infoine