

11 June 2015

**Passenger Transport Statistics (PT)**

April 2015. *Provisional data*

**The number of passengers using public transport increases by 1.6% in April, as compared with the same month of the previous year**

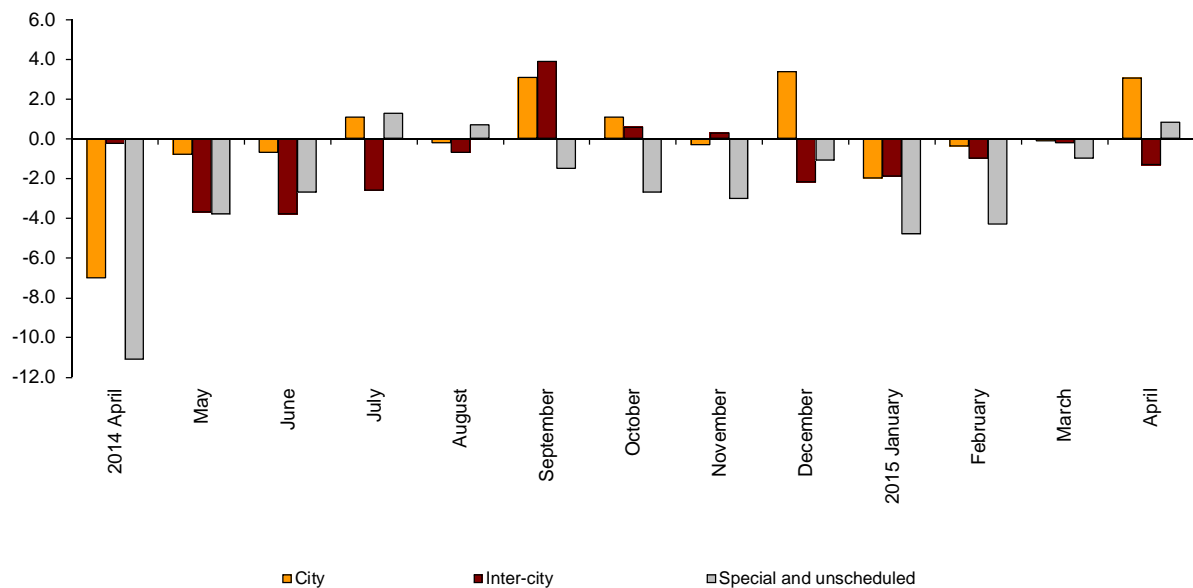
**City transport increases by 3.1% in the annual rate and inter-city transport decreases by 1.3%**

**Passengers transport evolution**

More than 384.4 million passengers used public transport in April, 1.6% more than in the same month of 2014.

City transport increased by 3.1% and inter-city transport decreased by 1.3% in the annual rate. Within the last one, rail transport was the one that recorded the greatest decrease, with a -4.0% rate.

**Annual evolution of passengers transport**  
Type of transport



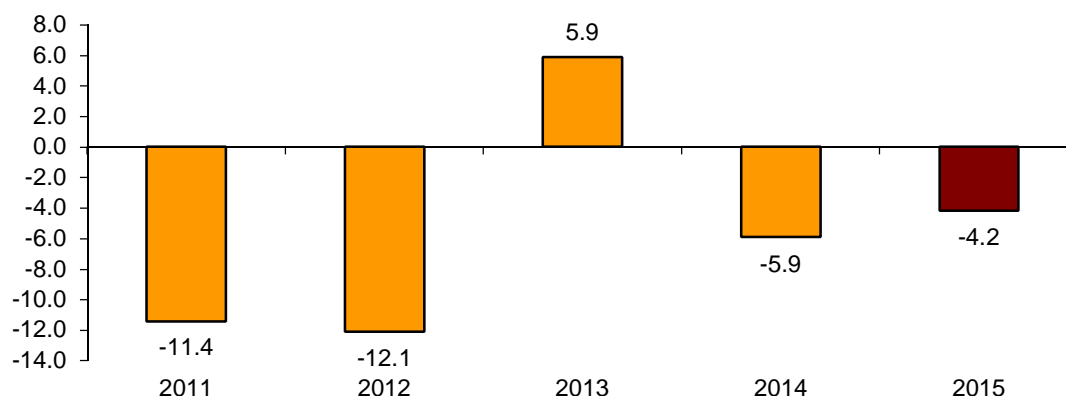
## Passengers transport annual evolution, by type of transport

	City	Inter-city	Special and unschedule
2014 April	-7.0	-0.2	-11.1
May	-0.8	-3.7	-3.8
June	-0.7	-3.8	-2.7
July	1.1	-2.6	1.3
August	-0.2	-0.7	0.7
September	3.1	3.9	-1.5
October	1.1	0.6	-2.7
November	-0.3	0.3	-3.0
December	3.4	-2.2	-1.1
2015 January	-2.0	-1.9	-4.8
February	-0.4	-1.0	-4.3
March	-0.1	-0.2	-1.0
April	3.1	-1.3	0.8

## Monthly rate evolution

The variation rate for the number of passengers on public transport in April 2015, as compared with March, was  $-4.2\%$ . In order to contribute to the analysis and interpretation of data, the evolution of the monthly rate of public transport passengers in the last years is shown in the following chart.

**Evolution of the monthly rate  
(month-on-month variation for April as compared with March)**



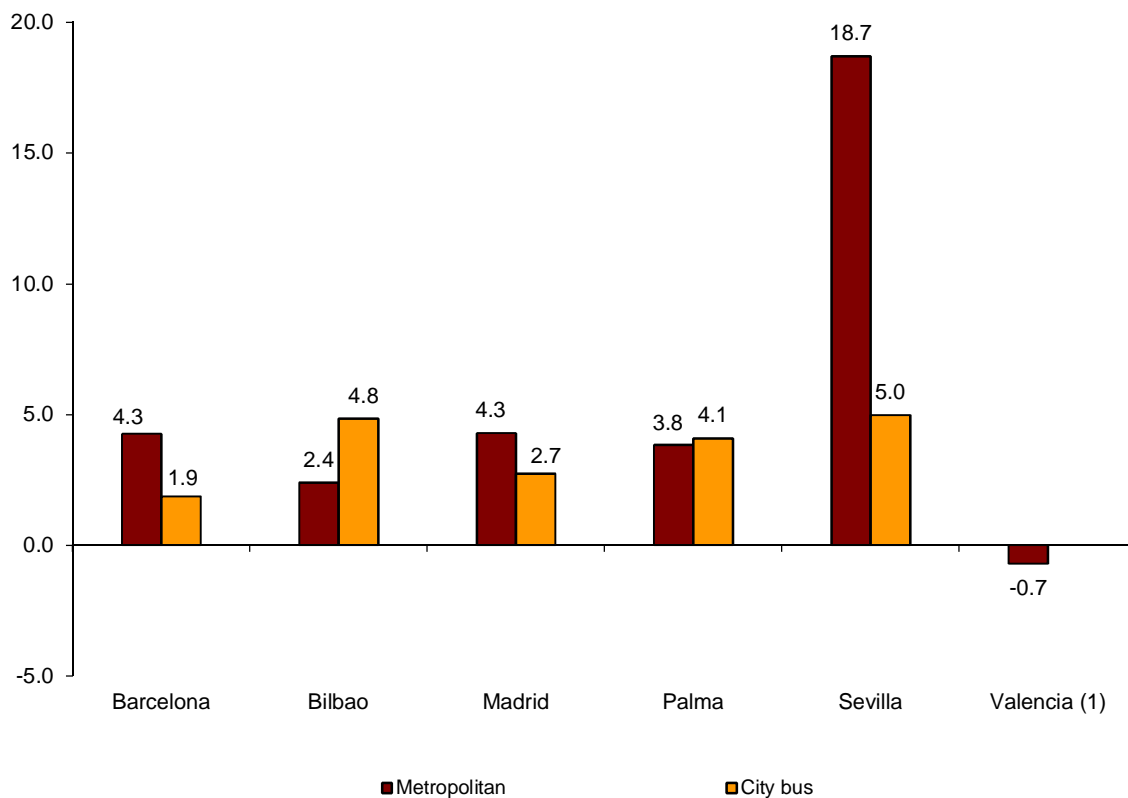
## City transport

City transport was used by more than 235.9 million passengers in April, 3.1% more than in the same month of 2014.

Metropolitan transport registered an increase of 4.1%, while bus transport increased by 2.4%.

Bus transport increased in all cities. The greatest increases were recorded in Sevilla (5.0%) and Bilbao (4.8%). In turn, metropolitan transport registered the greatest increase in Sevilla (18.7%).

**Annual rate of city transport passengers in cities with a Metropolitan**

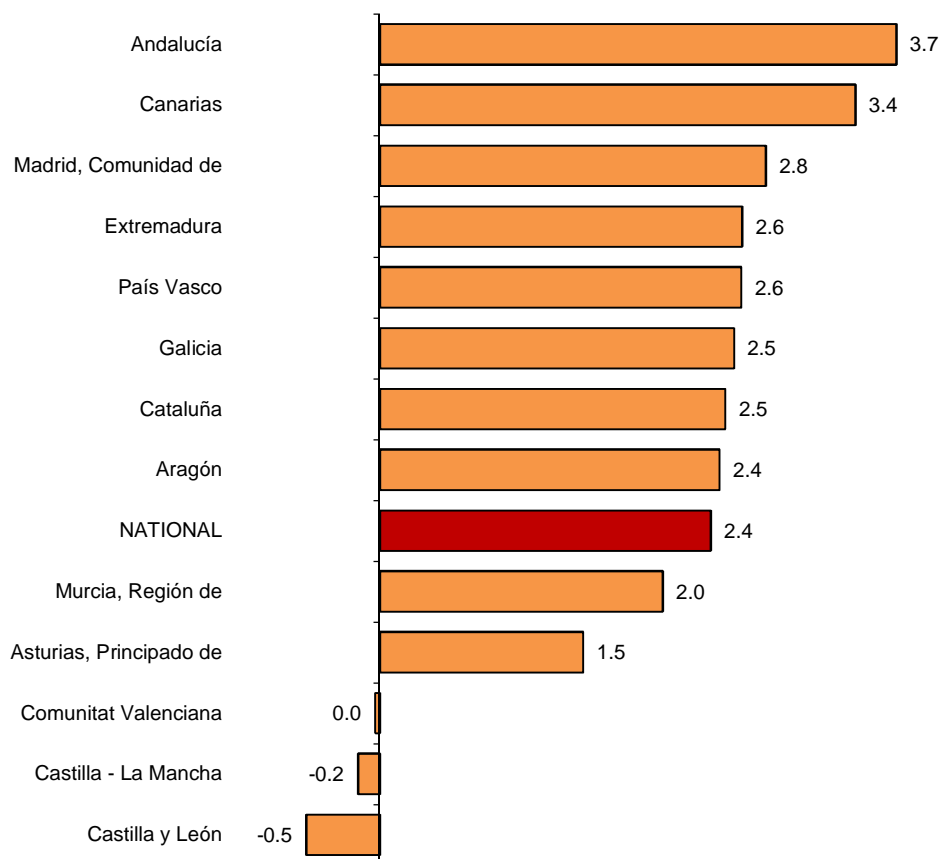


<sup>(1)</sup> The publication of the city transport by bus in Valencia is not allowed

The number of passengers of bus transport increased in all Autonomous Communities, except for Comunitat Valeciana (0.0%), Castilla-La Mancha (-0.2%) and Castilla y León (-0.5%).

Andalucía (3.7%), Canarias (3.4%) and Comunidad de Madrid (2.8%) were those that registered the greatest increases.

### Annual rates of the number of passangers City transport by bus



(1) In order to protect statistical secrecy, data of the Autonomous Communities of Illes Balears, Cantabria, Comunidad Foral de Navarra and La Rioja and of the Autonomous Cities of Ceuta and Melilla are not published

## Inter-city transport

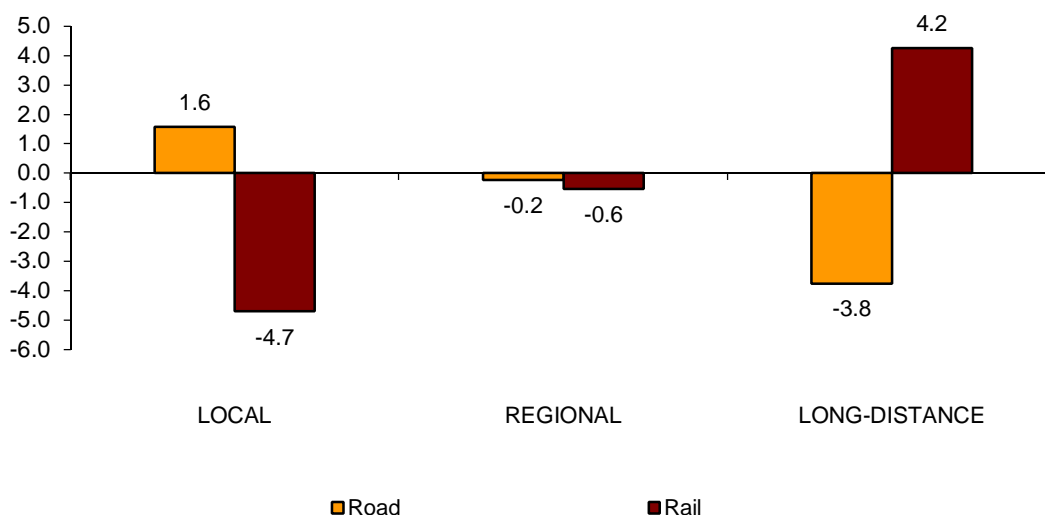
More than 105.1 million passengers used inter-city transport in April, indicating a 1.3% decrease as compared with the same month of 2014.

Bus transport increased 0.9% whereas rail transport decreased 4.0%. In turn, air transport increased by 5.2%.

Local distance passengers increased by 1.6% for bus transport and decreased by 4.7% for rail transport. Regional distance passengers decreased 0.2% for bus transport and 0.6% for rail transport.

Finally, long distance passengers decreased 3.8% for bus transport and increased 4.2% for rail transport.

**Annual rate of the number of passengers  
Inter-city transport by type of transport and distance**



## Special and unscheduled transport

More than 43.3 million passengers used special and unscheduled transport in April, indicating an increase of 0.8% in the annual rate.

The number of special transport passengers decreased 0.6%, reaching more than 28.3 million users. Within this, school transport increased 1.0%, and work transport decreased by 4.9%.

In turn, unscheduled transport increased 3.6%, as compared with the same month of 2014, reaching more than 15.0 million passengers.

## Passenger Transport Statistics

**April 2015**

Provisional data

### 1. Passenger transport

	Passengers transported (thousands)	% variation	
		Annual	Year-to-date average
BY TYPE OF TRANSPORT	384,445	1.6	-0.5
City transport	235,907	3.1	0.1
Inter-city transport	105,186	-1.3	-1.1
Special and unscheduled transport	43,353	0.8	-2.2

### 2. City transport

	Passengers transported (thousands)	% variation	
		Annual	Year-to-date average
CITY TRANSPORT	235,907	3.1	0.1
Metropolitan	95,482	4.1	0.7
Bus <sup>(1)</sup>	140,424	2.4	-0.3

<sup>(1)</sup> This includes trams and funiculars

## 2.1 City transport in cities with a Metropolitan

		Passengers transported (thousands)	% variation	
			Annual	Year-to-date average
Barcelona	City bus	16,505	1.9	-1.1
	Metropolitan	32,957	4.3	2.5
Bilbao	City bus	2,940	4.8	0.1
	Metropolitan	6,884	2.4	-0.6
Madrid	City bus	35,134	2.7	-2.1
	Metropolitan	48,809	4.3	-0.3
Palma	City bus	3,213	4.1	2.3
	Metropolitan <sup>(1)</sup>	104	3.8	0.0
Sevilla	City bus	7,575	5.0	3.5
	Metropolitan	1,896	18.7	12.6
Valencia	City bus	<sup>(2)</sup>	<sup>(2)</sup>	<sup>(2)</sup>
	Metropolitan	4,832	-0.7	-1.2

<sup>(1)</sup> Estimated data

<sup>(2)</sup> Publication thereof is not allowed

## 2.2 Urban transport by bus by Autonomous City and Community

	Passengers transported (thousands)	% variation	
		Annual	Year-to-date average
NATIONAL	140,424	2.4	-0.3
Andalucía	20,149	3.7	3.9
Aragón	10,042	2.4	0.7
Asturias, Principado de	2,801	1.5	-2.9
Balears, Illes	<sup>(1)</sup>	<sup>(1)</sup>	<sup>(1)</sup>
Canarias	4,607	3.4	1.3
Cantabria	<sup>(1)</sup>	<sup>(1)</sup>	<sup>(1)</sup>
Castilla y León	5,401	-0.5	-2.2
Castilla - La Mancha	1,598	-0.2	-2.8
Cataluña	22,859	2.5	-0.6
Comunitat Valenciana	10,684	0.0	-0.8
Extremadura	927	2.6	-2.9
Galicia	5,089	2.5	0.0
Madrid, Comunidad de	39,372	2.8	-2.2
Murcia, Región de	1,503	2.0	-1.1
Navarra, Comunidad Foral de	<sup>(1)</sup>	<sup>(1)</sup>	<sup>(1)</sup>
País Vasco	6,524	2.6	-0.8
Rioja, La	<sup>(1)</sup>	<sup>(1)</sup>	<sup>(1)</sup>
Ceuta	<sup>(1)</sup>	<sup>(1)</sup>	<sup>(1)</sup>
Melilla	<sup>(1)</sup>	<sup>(1)</sup>	<sup>(1)</sup>

### 3. Inter-city transport

	Passengers transported (thousands)	% variation	
		Annual	Year-to-date average
<b>INTER-CITY TRANSPORT</b>	105,186	-1.3	-1.1
Road	53,684	0.9	-0.9
Local	36,758	1.6	-1.2
Regional	15,590	-0.2	-0.5
Long-distance	1,336	-3.8	1.1
Rail <sup>(1)</sup>	48,187	-4.0	-1.5
Local rail	42,905	-4.7	-2.1
Regional rail	2,629	-0.6	0.3
Long-distance rail	2,653	4.2	8.5
Air (domestic)	2,595	5.2	5.2
Sea (cabotage) <sup>(2)</sup>	720	2.2	1.3

<sup>(1)</sup> Local and regional rail include all rail operators and Long-distance rail only includes RENFE

<sup>(2)</sup> Estimated data

### 4. Special and unscheduled transport

	Passengers transported (thousands)	% variation	
		Annual	Year-to-date average
<b>SPECIAL AND UNSCHEDULED TRANSPORT</b>	43,353	0.8	-2.2
Special	28,304	-0.6	-4.3
School	21,303	1.0	-4.4
Work	7,001	-4.9	-4.0
Unscheduled	15,049	3.6	3.4

For further information see INEbase - [www.ine.es/en/](http://www.ine.es/en/) All press releases at: [www.ine.es/prensa/prensa\\_en.htm](http://www.ine.es/prensa/prensa_en.htm)

**Press Office:** Telephone numbers: 91 583 93 63 / 94 08 – Fax: 91 583 90 87 - [gprensa@ine.es](mailto:gprensa@ine.es)

**Information Area:** Telephone number: 91 583 91 00 – Fax: 91 583 91 58 – [www.ine.es/infoine](http://www.ine.es/infoine)