

**Passenger Transport Statistics (PT)**  
May 2016. *Provisional data*

**The number of passengers using public transport increases by 3.2% in May, as compared with the same month of the previous year**

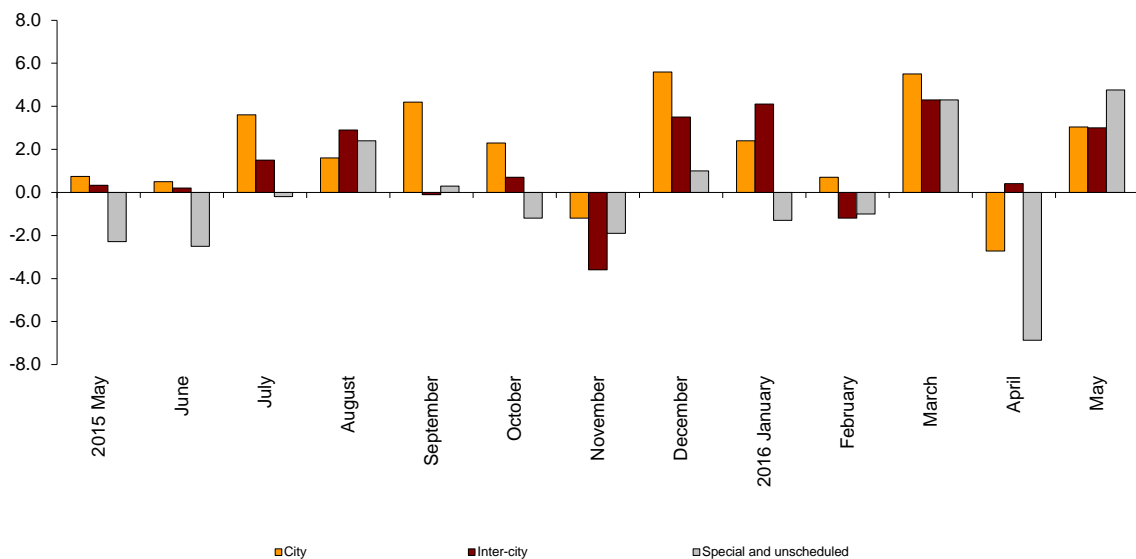
**City transport and inter-city transport increases by 3.0% in the annual rate**

**Passengers transport evolution**

More than 420.4 million passengers used public transport in May, 3.2% more than in the same month of 2015.

Both, city transport and inter-city transport increased by 3.0% in the annual rate. Within the last one, air transport was the one that recorded the greatest increase, with a 11.9% rate.

**Annual evolution of passengers transport**  
Type of transport



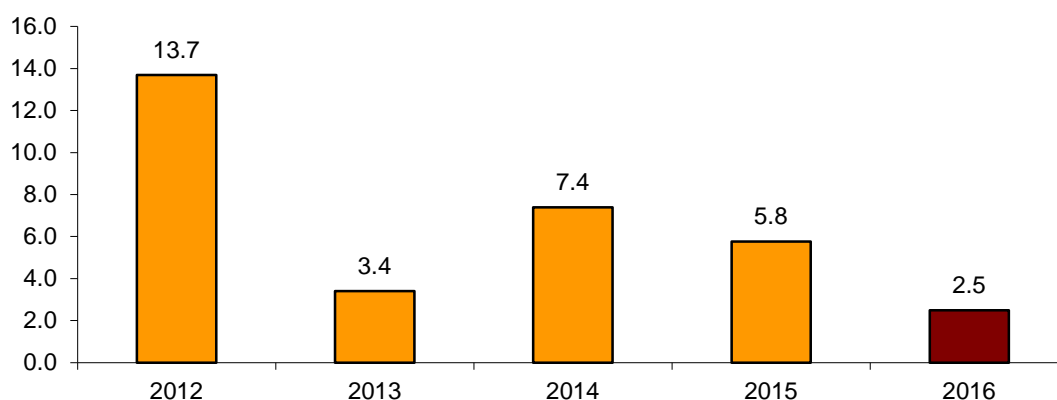
## Passengers transport annual evolution, by type of transport

|              | City | Inter-city | Special and unschedule |
|--------------|------|------------|------------------------|
| 2015 May     | 0.7  | 0.3        | -2.3                   |
| June         | 3.6  | 1.5        | -0.2                   |
| July         | 1.6  | 2.9        | 2.4                    |
| August       | 4.2  | -0.1       | 0.3                    |
| September    | 2.3  | 0.7        | -1.2                   |
| October      | -1.2 | -3.6       | -1.9                   |
| November     | 5.6  | 3.5        | 1.0                    |
| December     | 2.4  | 4.1        | -1.3                   |
| 2016 January | 0.7  | -1.3       | -1.0                   |
| February     | 5.5  | 4.3        | 4.3                    |
| March        | -2.7 | 0.4        | -6.9                   |
| April        | 6.0  | 6.0        | 12.4                   |
| May          | 3.0  | 3.0        | 4.8                    |

## Monthly rate evolution

The variation rate for the number of passengers on public transport in May 2016, as compared with April, was 2.5%. In order to contribute to the analysis and interpretation of data, the evolution of the monthly rate of public transport passengers in the last years is shown in the following chart.

**Evolution of the monthly rate  
(month-on-month variation for May as compared with April)**



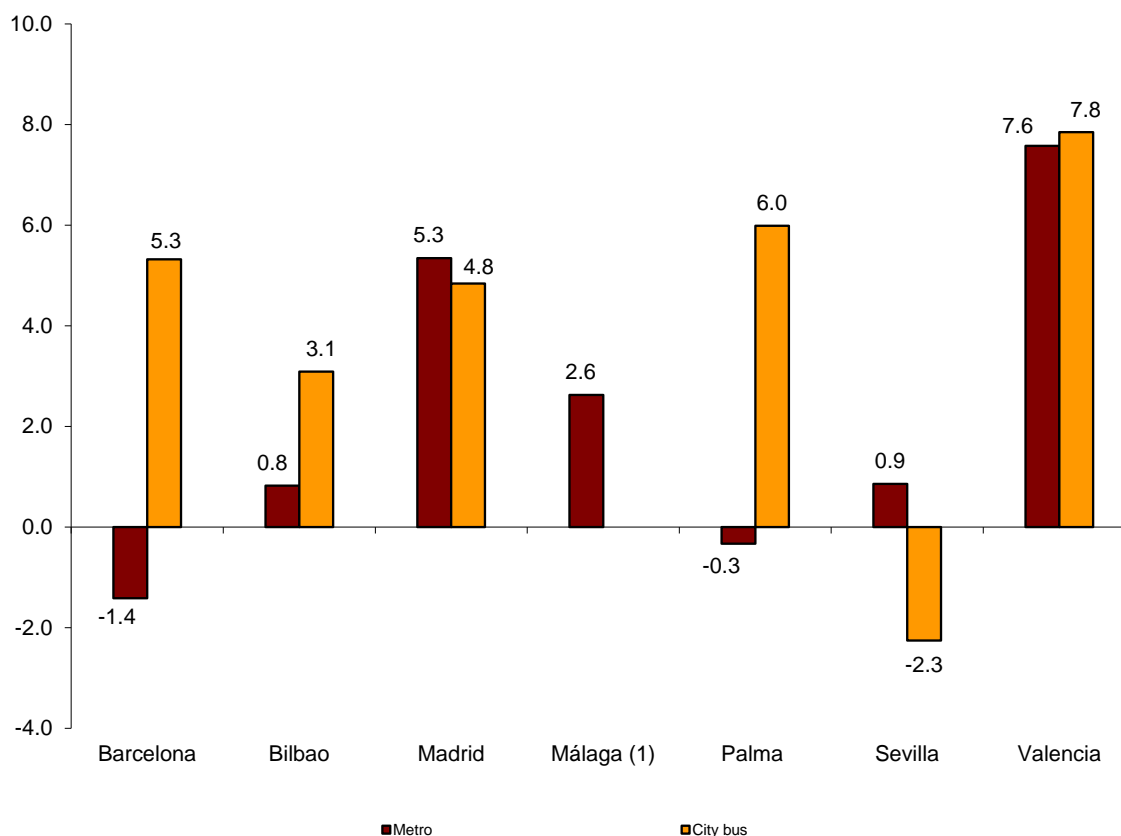
### City transport

City transport was used by more than 253.8 million passengers in May, 3.0% more than in the same month of 2015.

Metro transport registered an increase of 2.7%, with increases in all cities, except in Barcelona (-1.4%) and Palma (-0.3%). Metro transport in Valencia registered the greatest increase (7.6%).

In turn, bus transport annual rate increased by 3.3%. This transport increases in all cities with metro transport except in Sevilla (-2.3%) The greatest increase was registered in Valencia (7.8%).

**Annual rate of city transport passengers in major cities with Metro**

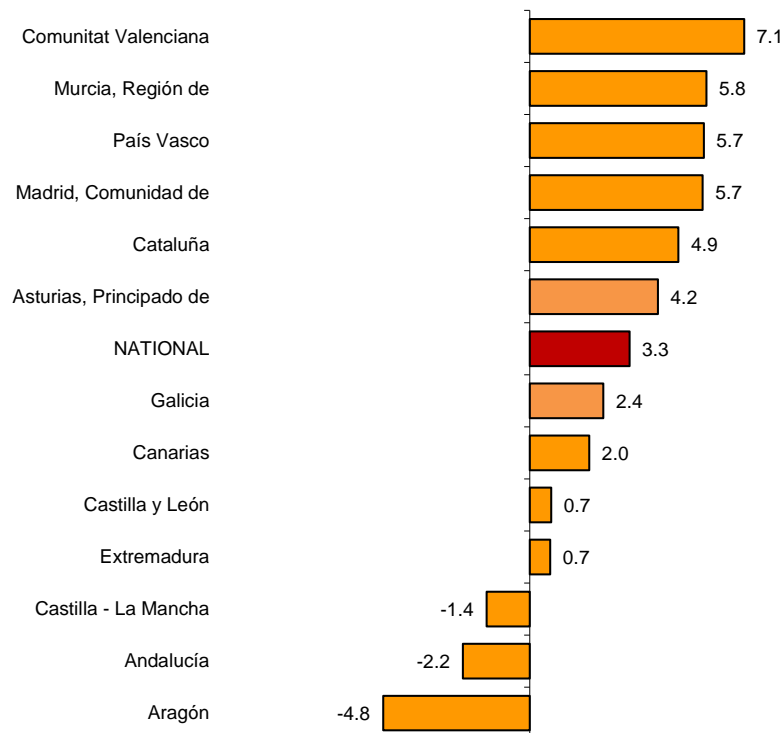


(1) The publication of the city transport by bus in Málaga is not allowed

The number of passengers of bus transport registered the greatest increase in Comunitat Valenciana (7.1%), Región de Murcia (5.8%) and País Vasco and Comunidad de Madrid (both with 5.7%).

Aragón (-4.8%), Andalucía (-2.2%) and Castilla-La Mancha (-1.4%) registered the greatest decreases.

## Annual rates of the number of passengers City transport by bus



<sup>(1)</sup> In order to protect statistical secrecy, data of the Autonomous Communities of Illes Balears, Cantabria, Comunidad Foral de Navarra and La Rioja and of the Autonomous Cities of Ceuta and Melilla are not published

## Inter-city transport

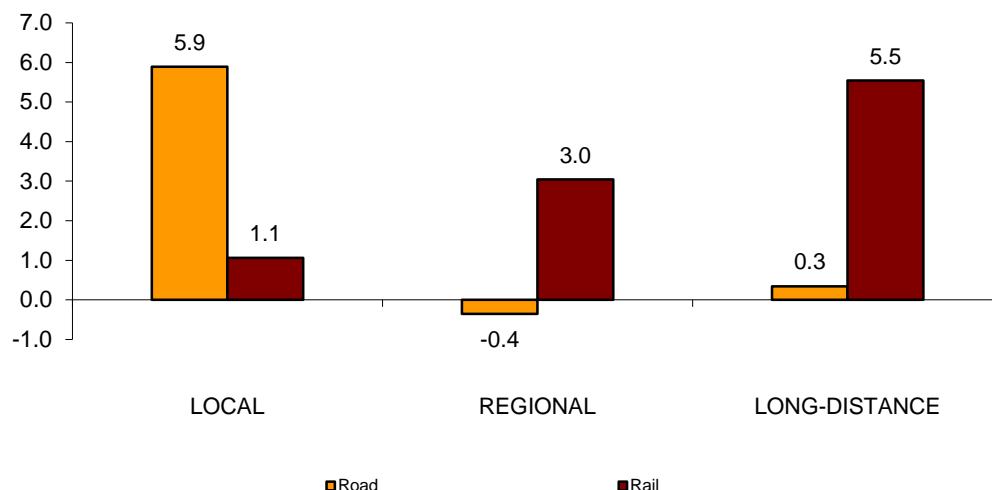
More than 113.3 million passengers used inter-city transport in May, representing a 3.0% increase as compared with the same month of 2015.

Air transport increased by 11.9%, bus transport increased by 4.0% and rail transport increased by 1.4%.

Local distance passengers increased by 5.9% for bus transport and increased by 1.1% for rail transport. Regional distance passengers decreased by 1.1 for bus transport and increased by 3.0% for rail transport.

Finally, long distance passengers increased by 0.3% for bus transport and by 5.5% for rail transport. Within the last one, AVE increased by 7.2%.

### Annual rate of the number of passengers Inter-city transport by type of transport and distance



## Special and unscheduled transport

More than 53.2 million passengers used special and unscheduled transport in May, indicating an increase of 4.8% in the annual rate.

The number of special transport passengers increased 4.1%, reaching more than 34.0 million users. Within this, school transport increased by 5.0%, and work transport increased by 1.1%.

In turn, unscheduled transport increased 5.9%, as compared with the same month of the previous year, reaching more than 19.2 million passengers.

## Passenger Transport Statistics

May 2016

Provisional data

### 1. Passenger transport

|                                   | Passengers transported (thousands) | % variation |                      |
|-----------------------------------|------------------------------------|-------------|----------------------|
|                                   |                                    | Annual      | Year-to-date average |
| BY TYPE OF TRANSPORT              | 420,455                            | 3.2         | 2.5                  |
| City transport                    | 253,879                            | 3.0         | 2.5                  |
| Inter-city transport              | 113,322                            | 3.0         | 2.5                  |
| Special and unscheduled transport | 53,253                             | 4.8         | 2.7                  |

### 2. City transport

|                    | Passengers transported (thousands) | % variation |                      |
|--------------------|------------------------------------|-------------|----------------------|
|                    |                                    | Annual      | Year-to-date average |
| CITY TRANSPORT     | 253,879                            | 3.0         | 2.5                  |
| Metro              | 101,716                            | 2.7         | 2.5                  |
| Bus <sup>(1)</sup> | 152,163                            | 3.3         | 2.4                  |

<sup>(1)</sup> This includes trams and funiculars

## 2.1 City transport in major cities with Metro

|           |          | Passengers transported (thousands) | % variation |                      |
|-----------|----------|------------------------------------|-------------|----------------------|
|           |          |                                    | Annual      | Year-to-date average |
| Barcelona | City bus | 18,628                             | 5.3         | 3.7                  |
|           | Metro    | 34,133                             | -1.4        | -0.9                 |
| Bilbao    | City bus | 3,380                              | 3.1         | 2.2                  |
|           | Metro    | 7,804                              | 0.8         | 1.1                  |
| Madrid    | City bus | 38,263                             | 4.8         | 5.3                  |
|           | Metro    | 52,376                             | 5.3         | 4.7                  |
| Málaga    | City bus | (1)                                | (1)         | (1)                  |
|           | Metro    | 452                                | 2.6         | 3.9                  |
| Palma     | City bus | 3,752                              | 6.0         | 2.9                  |
|           | Metro    | 72                                 | -0.3        | 1.7                  |
| Sevilla   | City bus | 6,738                              | -2.3        | 0.9                  |
|           | Metro    | 1,241                              | 0.9         | 2.6                  |
| Valencia  | City bus | 8,568                              | 7.8         | 4.2                  |
|           | Metro    | 5,638                              | 7.6         | 4.8                  |

(1) Publication thereof is not allowed

## 2.2 Urban transport by bus by Autonomous Cities and Communities

|                             | Passengers transported (thousands) | % variation |                      |
|-----------------------------|------------------------------------|-------------|----------------------|
|                             |                                    | Annual      | Year-to-date average |
| NACIONAL                    | 152,163                            | 3.3         | 2.4                  |
| Andalucía                   | 19,528                             | -2.2        | 0.6                  |
| Aragón                      | 10,215                             | -4.8        | -17.2                |
| Asturias, Principado de     | 2,737                              | 4.2         | 1.0                  |
| Balears, Illes              | (1)                                | (1)         | (1)                  |
| Canarias                    | 4,791                              | 2.0         | 3.9                  |
| Cantabria                   | (1)                                | (1)         | (1)                  |
| Castilla y León             | 5,865                              | 0.7         | 1.7                  |
| Castilla - La Mancha        | 1,669                              | -1.4        | 2.2                  |
| Cataluña                    | 25,566                             | 4.9         | 3.5                  |
| Comunitat Valenciana        | 12,843                             | 7.1         | 6.4                  |
| Extremadura                 | 971                                | 0.7         | 1.2                  |
| Galicia                     | 5,260                              | 2.4         | 1.1                  |
| Madrid, Comunidad de        | 43,202                             | 5.7         | 6.0                  |
| Murcia, Región de           | 1,669                              | 5.8         | 4.3                  |
| Navarra, Comunidad Foral de | (1)                                | (1)         | (1)                  |
| País Vasco                  | 7,700                              | 5.7         | 5.7                  |
| Rioja, La                   | (1)                                | (1)         | (1)                  |
| Ceuta                       | (1)                                | (1)         | (1)                  |
| Melilla                     | (1)                                | (1)         | (1)                  |

### 3. Inter-city transport

|                                    | Passengers transported (thousands) | % variation |                      |
|------------------------------------|------------------------------------|-------------|----------------------|
|                                    |                                    | Annual      | Year-to-date average |
| <b>INTER-CITY TRANSPORT</b>        | 113,322                            | 3.0         | 2.5                  |
| Road                               | 58,565                             | 4.0         | 2.9                  |
| Local                              | 41,265                             | 5.9         | 4.9                  |
| Regional                           | 16,018                             | -0.4        | -1.5                 |
| Long-distance                      | 1,282                              | 0.3         | 1.1                  |
| Rail <sup>(1)</sup>                | 51,152                             | 1.4         | 1.6                  |
| Local rail                         | 45,413                             | 1.1         | 1.5                  |
| Regional rail                      | 2,855                              | 3.0         | 1.4                  |
| Long-distance rail                 | 2,884                              | 5.5         | 3.8                  |
| AVE train                          | 1,903                              | 7.2         | 7.0                  |
| Rest of long-distance rail         | 981                                | 2.4         | -1.8                 |
| Air (domestic)                     | 2,943                              | 11.9        | 11.7                 |
| Maritime (cabotage) <sup>(2)</sup> | 662                                | 6.4         | 8.4                  |

<sup>(1)</sup> Local and regional rail include all rail operators and Long-distance rail only includes RENFE

<sup>(2)</sup> Estimated data

### 4. Special and unscheduled transport

|  | Passengers transported (thousands) | % variation |                      |
|--|------------------------------------|-------------|----------------------|
|  |                                    | Annual      | Year-to-date average |
| <b>SPECIAL AND UNSCHEDULED TRANSPORT</b> | 53,253                             | 4.8         | 2.7                  |
| Special                                  | 34,026                             | 4.1         | 1.5                  |
| School                                   | 26,595                             | 5.0         | 2.2                  |
| Work                                     | 7,431                              | 1.1         | -0.9                 |
| Unscheduled                              | 19,228                             | 5.9         | 5.6                  |

For further information see INEbase - [www.ine.es/en/](http://www.ine.es/en/) All press releases at: [www.ine.es/prensa/prensa\\_en.htm](http://www.ine.es/prensa/prensa_en.htm)

**Press Office:** Telephone numbers: 91 583 93 63 / 94 08 – Fax: 91 583 90 87 - [gprensa@ine.es](mailto:gprensa@ine.es)

**Information Area:** Telephone number: 91 583 91 00 – Fax: 91 583 91 58 – [www.ine.es/infoine](http://www.ine.es/infoine)