

Passenger Transport Statistics (PT)
June 2014. *Provisional data*

The number of passengers using public transport decreases 1.8% in June, as compared with the same month of the previous year

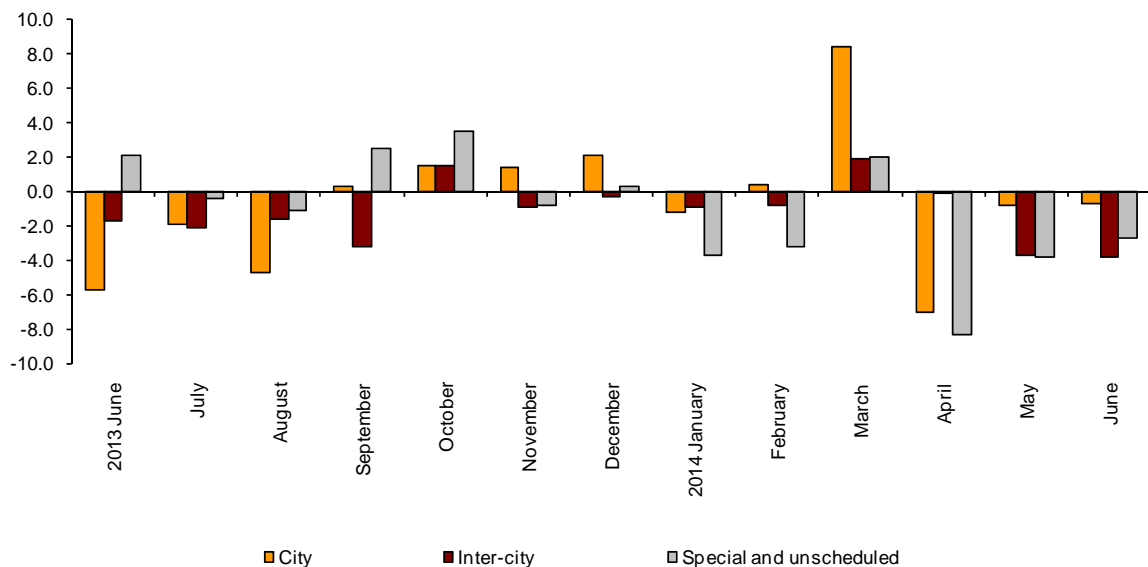
City transport decreases 0.7% in the annual rate and inter-city transport decreases 3.8%

Passengers transport evolution

More than 378.6 million passengers used public transport in June, 1.8% less than in the same month of 2013.

City transport decreased 0.7% and inter-city transport did so by 3.8%. Within the inter-city transport, bus and rail transport decreased, but air transport increased.

Annual evolution of passengers transport
Type of transport



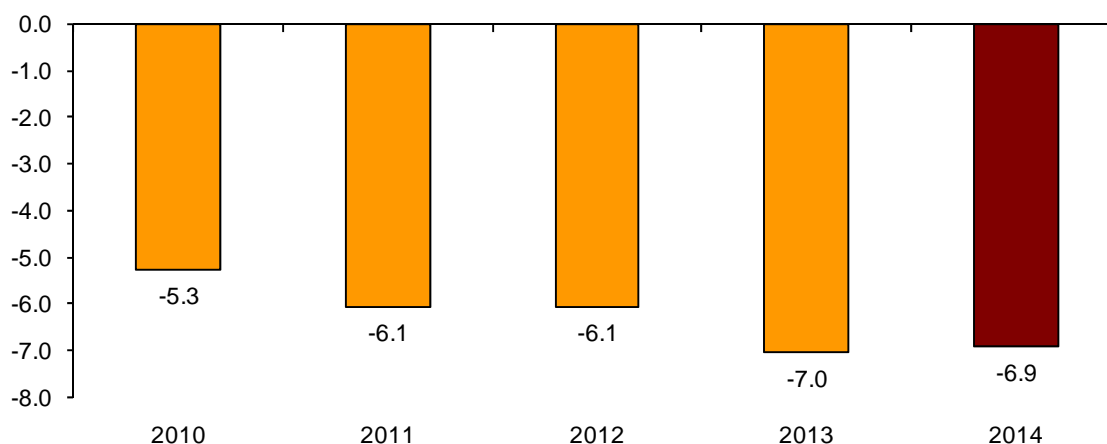
Passengers transport annual evolution, by type of transport

	City	Inter-city	Special and unscheduled
2013 June	-5.7	-1.7	2.1
July	-1.9	-2.1	-0.4
August	-4.7	-1.6	-1.1
September	0.3	-3.2	2.5
October	1.5	1.5	3.5
November	1.4	-0.9	-0.8
December	2.1	-0.3	0.3
2014 January	-1.2	-0.9	-3.7
February	0.4	-0.8	-3.2
March	8.4	1.9	2.0
April	-7.0	-0.1	-8.3
May	-0.8	-3.7	-3.8
June	-0.7	-3.8	-2.7

Monthly rate evolution

The variation rate for the number of passengers on public transport in June, as compared with May, was -6.9%. In order to contribute to the analysis and interpretation of the data, the following chart shows the variation for June as compared with May for the last five years.

**Evolution of the monthly rate
(month-on-month variation for June as compared with May)**



City transport

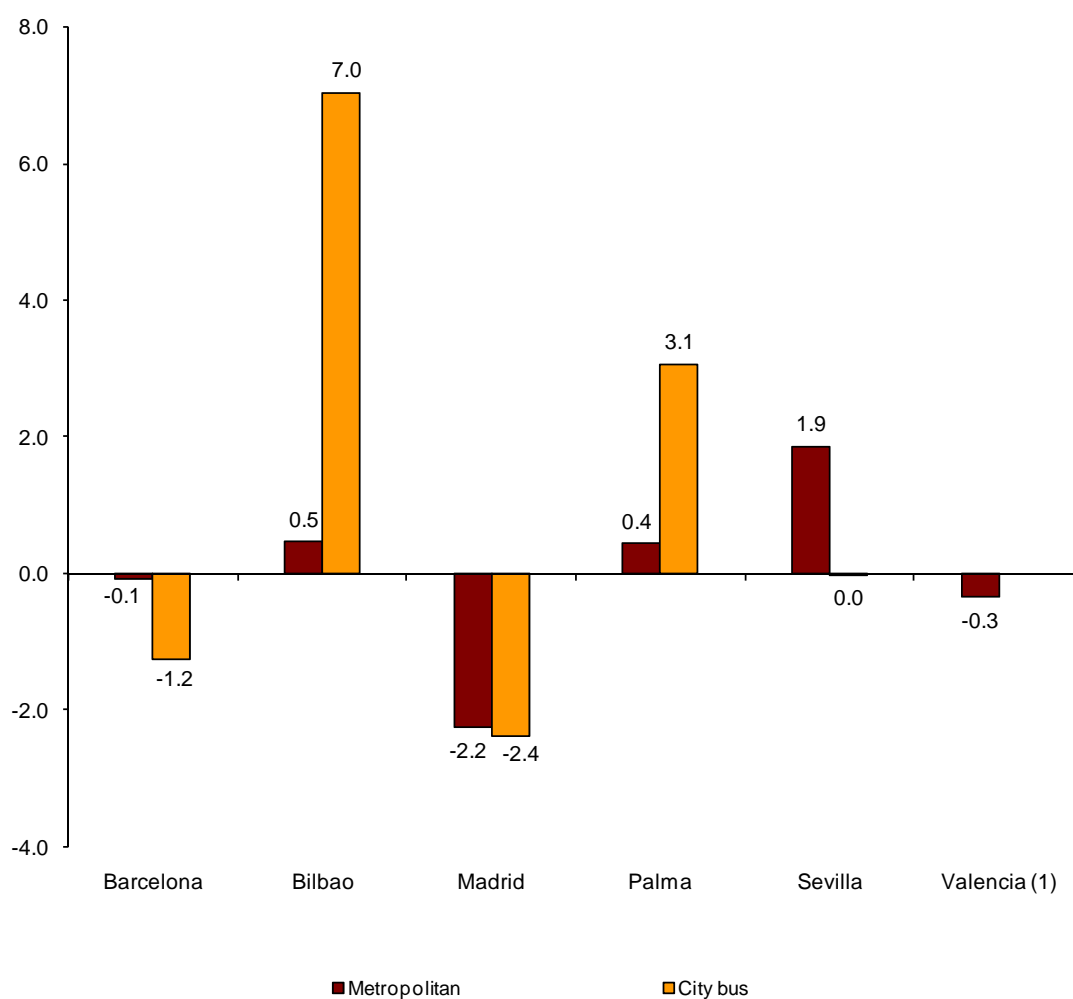
City transport was used by more than 226.6 million passengers in June, 0.7% less than in the same month of 2013.

Metropolitan transport registered a decrease of 1.1% and bus transport decreased by 0.4%.

Metropolitan transport registered a decrease in Madrid (-2.2%), Valencia (-0.3%) and Barcelona (-0.1%), and registered an increase in the rest of the cities. Sevilla (1.9%) registered the biggest increase.

Within cities using metropolitan transport, bus transport registered positive rates in Bilbao (7.0%) and Palma (3.1%); however, it decreased in Madrid (-2.4%) and Barcelona (-1.2%), and remained the same in Sevilla (0.0%).

Annual rate of city transport passengers in cities with a Metropolitan

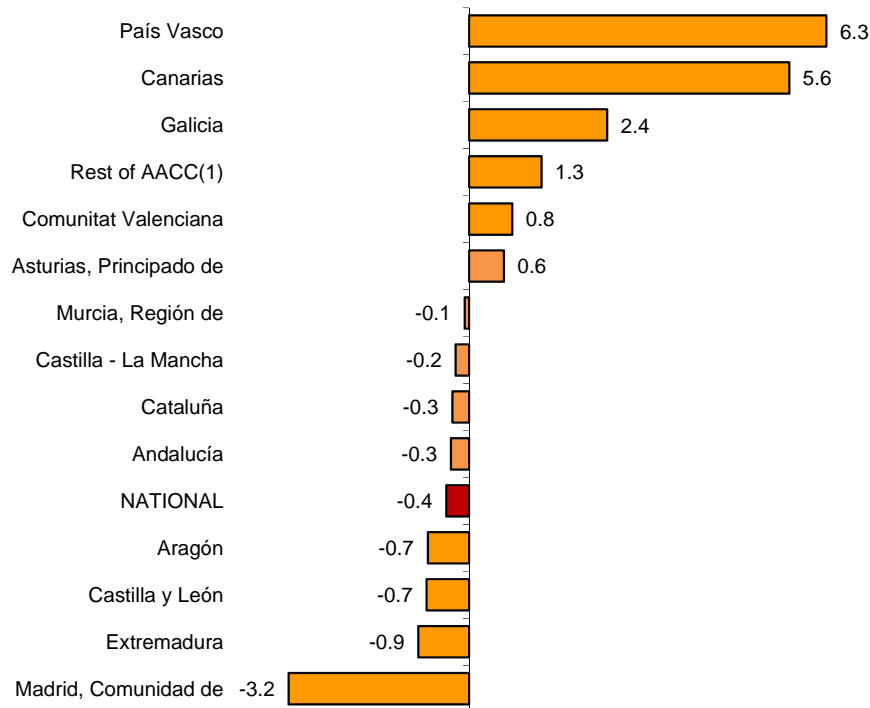


⁽¹⁾ The publication of the city transport by bus in Valencia is not allowed

The number of passengers of bus transport increased in five Autonomous Communities. País Vasco (6.3%), Canarias (5.6%) and Galicia (2.4%) registered the greatest increases in their annual rate.

In turn, Comunidad de Madrid (-3.2%), Extremadura (-0.9%) and Castilla y León and Aragón (both with -0.7%) recorded the greatest decreases.

Annual rates of the number of passengers City transport by bus



⁽¹⁾ In order to protect statistical secrecy, the passengers of the Autonomous Communities of Illes Balears, Cantabria, Comunidad Foral de Navarra and La Rioja and of the Autonomous Cities of Ceuta and Melilla have been grouped

Inter-city transport

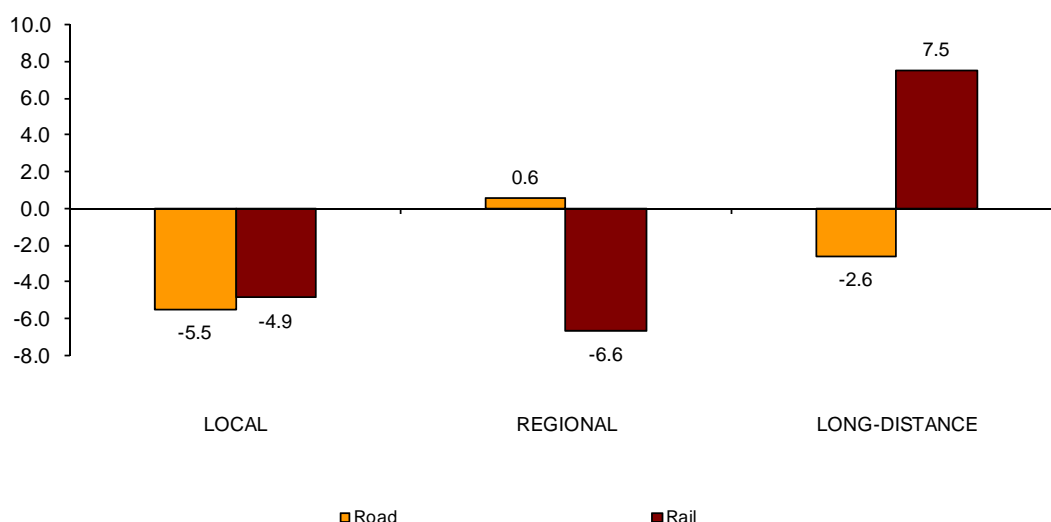
More than 106.4 million passengers used inter-city transport in June, indicating a 3.8% decrease, as compared with the same month of 2013.

By type of inter-city transport, bus transport decreased by 3.7%, rail transport decreased by 4.4% and air transport increased by 4.1%.

Local distance passengers decreased 5.5% for bus transport and 4.9% for rail transport. Regional distance passengers increased 0.6% for bus transport and decreased 6.6% for rail transport.

Finally, long distance passengers decreased 2.6% in bus transport and increased by 7.5% in rail transport.

**Annual rate of the number of passengers
Inter-city transport by type of transport and distance**



Special and unscheduled transport

More than 45.6 million passengers used special and unscheduled transport in June, indicating a decrease of 2.7% in the annual rate.

The number of special transport passengers decreased 6.4%, reaching more than 27.7 million users. Within this, school transport decreased 6.5%, and work transport did so by 6.2%.

In turn, unscheduled transport increased 3.6%, as compared with the same month of the previous year, reaching more than 17.8 million passengers.

Passenger Transport Statistics

June 2014

Provisional data

1. Passenger transport

	Passengers transported (thousands)	% variation	
		Annual	Year-to-date average
BY TYPE OF TRANSPORT	378,656	-1.8	-0.9
City transport	226,637	-0.7	-0.3
Inter-city transport	106,414	-3.8	-1.3
Special and unscheduled transport	45,604	-2.7	-3.3

2. City transport

	Passengers transported (thousands)	% variation	
		Annual	Year-to-date average
CITY TRANSPORT	226,637	-0.7	-0.3
Metropolitan	90,330	-1.1	-0.4
Bus ⁽¹⁾	136,307	-0.4	-0.1

⁽¹⁾ This includes trams and funiculars

2.1 City transport in cities with a Metropolitan

		Passengers transported (thousands)	% variation	
			Annual	Year-to-date average
Barcelona	City bus	16,101	-1.2	1.1
	Metropolitan	30,812	-0.1	0.7
Bilbao	City bus	2,979	7.0	4.4
	Metropolitan	7,227	0.5	-1.7
Madrid	City bus	34,455	-2.4	-0.1
	Metropolitan	46,271	-2.2	-1.0
Palma	City bus	3,456	3.1	0.7
	Metropolitan	72	0.4	0.1
Sevilla	City bus	6,200	0.0	3.6
	Metropolitan	1,010	1.9	2.7
Valencia	City bus	(1)	(1)	(1)
	Metropolitan	4,938	-0.3	-0.6

(1) Publication thereof is not allowed

2.2 City bus transport

	Passengers transported (thousands)	% variation	
		Annual	Year-to-date average
NATIONAL	136,307	-0.4	-0.1
Andalucía	17,526	-0.3	-0.4
Aragón	10,050	-0.7	-1.2
Asturias, Principado de	2,689	0.6	-0.5
Canarias	4,416	5.6	1.8
Castilla y León	5,347	-0.7	-1.8
Castilla - La Mancha	1,578	-0.2	-4.1
Cataluña	22,445	-0.3	1.3
Comunitat Valenciana	10,457	0.8	1.2
Extremadura	903	-0.9	-2.4
Galicia	4,917	2.4	-0.6
Madrid, Comunidad de	38,567	-3.2	-0.8
Murcia, Región de	1,303	-0.1	3.8
País Vasco	6,784	6.3	3.1
Rest of AACC ⁽¹⁾	9,324	1.3	-2.1

⁽¹⁾ In order to protect statistical secrecy, the passengers of the Autonomous Communities of Illes Balears, Cantabria, Comunidad Foral de Navarra and La Rioja and of the Autonomous Cities of Ceuta and Melilla have been grouped

3. Inter-city transport

	Passengers transported (thousands)	% variation	
		Annual	Year-to-date average
INTER-CITY TRANSPORT	106,414	-3.8	-1.3
Road	55,928	-3.7	-2.4
Local	38,177	-5.5	-3.5
Regional	16,339	0.6	0.3
Long-distance	1,412	-2.6	-5.1
Rail ⁽¹⁾	46,895	-4.4	-0.1
Local rail	41,768	-4.9	-0.4
Regional rail	2,540	-6.6	-5.2
Long-distance rail	2,588	7.5	14.1
Air (domestic)	2,706	4.1	-0.5
Sea (cabotage)	885	0.3	0.8

⁽¹⁾ Local and regional rail include all rail operators and Long-distance rail only includes RENFE

4. Special and unscheduled transport

	Passengers transported (thousands)	% variation	
		Annual	Year-to-date average
SPECIAL AND UNSCHEDULED TRANSPORT	45,604	-2.7	-3.3
Special	27,750	-6.4	-6.2
School	19,975	-6.5	-6.3
Work	7,774	-6.2	-5.7
Unscheduled	17,855	3.6	4.2

For further information see INEbase - www.ine.es/en/ All press releases at: www.ine.es/prensa/prensa_en.htm

Press Office: Telephone numbers: 91 583 93 63 / 94 08 – Fax: 91 583 90 87 - gprensa@ine.es

Information Area: Telephone number: 91 583 91 00 – Fax: 91 583 91 58 – www.ine.es/infoine