

10 August 2015

**Passenger Transport Statistics (PT)**  
June 2015. *Provisional data*

**The number of passengers using public transport increases by 2.6% in June, as compared with the same month of the previous year**

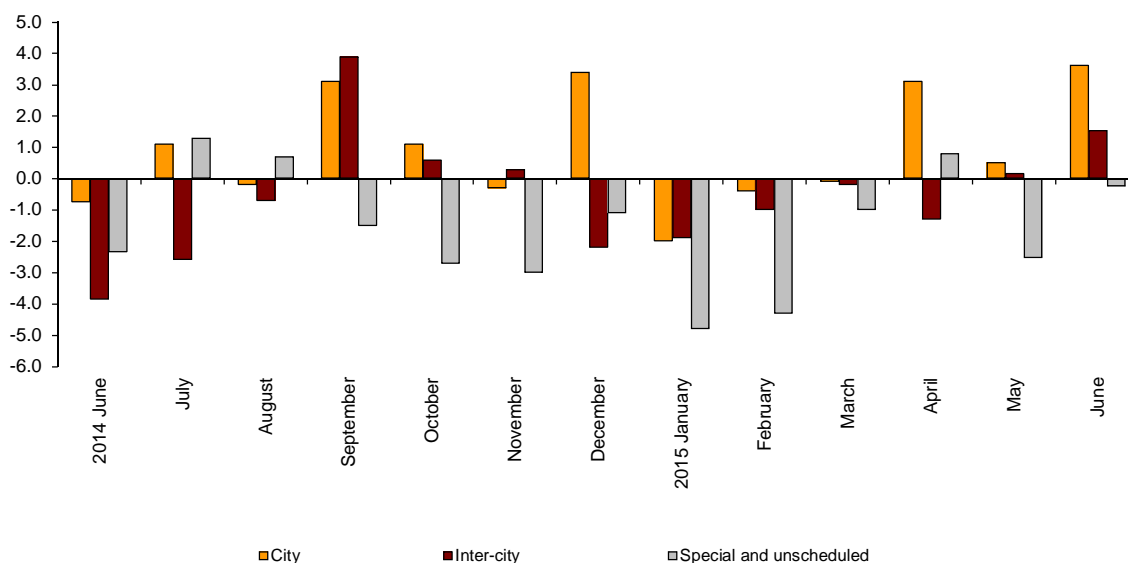
**City transport increases by 3.6% in the annual rate and inter-city transport does so by 1.5%**

**Passengers transport evolution**

More than 388.3 million passengers used public transport in June, 2.6% more than in the same month of 2014.

City transport increased by 3.6% and inter-city transport did so by 1.5% in the annual rate. Within the last one, air transport was the one that recorded the greatest increase, with a 3.9% rate.

**Annual evolution of passengers transport**  
Type of transport



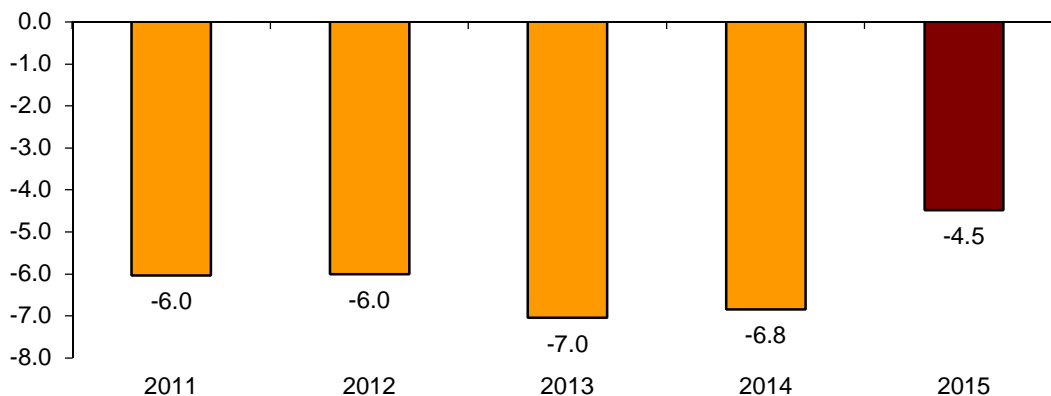
## Passengers transport annual evolution, by type of transport

	City	Inter-city	Special and unschedule
2014 June	-0.7	-3.9	-2.3
July	1.1	-2.6	1.3
August	-0.2	-0.7	0.7
September	3.1	3.9	-1.5
October	1.1	0.6	-2.7
November	-0.3	0.3	-3.0
December	3.4	-2.2	-1.1
2015 January	-2.0	-1.9	-4.8
February	-0.4	-1.0	-4.3
March	-0.1	-0.2	-1.0
April	3.1	-1.3	0.8
May	0.5	0.2	-2.5
June	3.6	1.5	-0.2

## Monthly rate evolution

The variation rate for the number of passengers on public transport in June 2015, as compared with May, was  $-4.5\%$ . In order to contribute to the analysis and interpretation of data, the evolution of the monthly rate of public transport passengers in the last years is shown in the following chart.

**Evolution of the monthly rate  
(month-on-month variation for June as compared with May)**



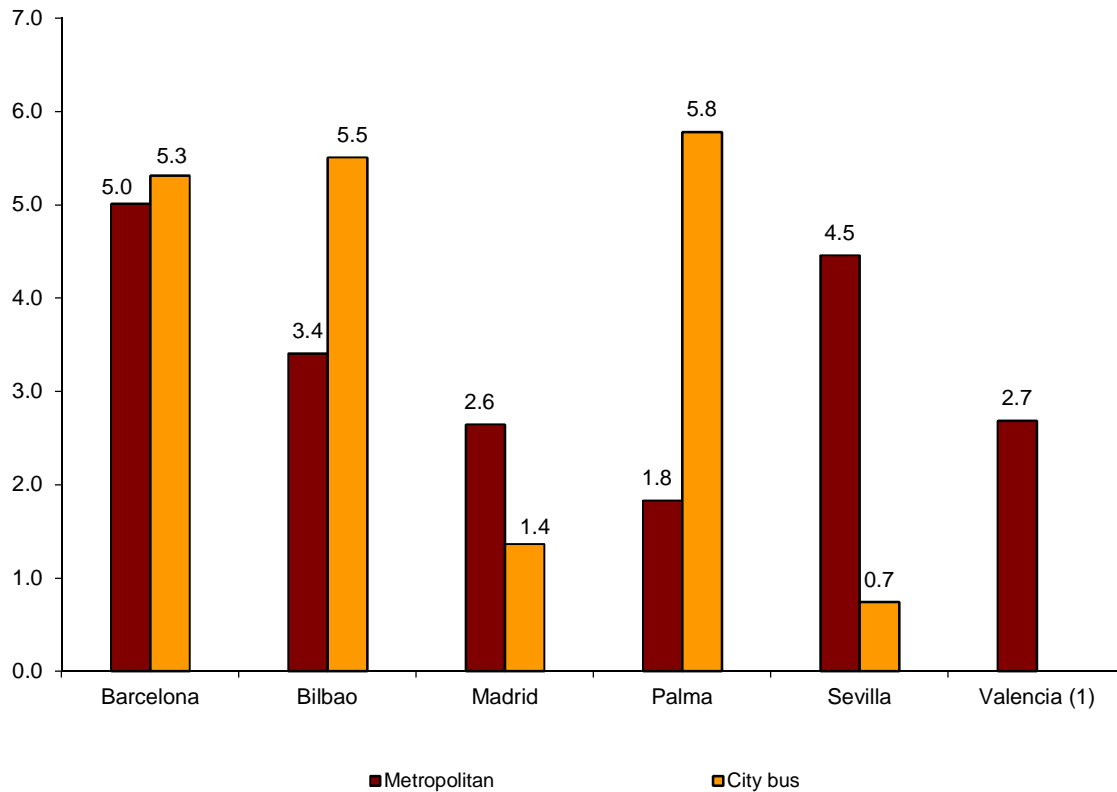
### City transport

City transport was used by more than 234.7 million passengers in June, 3.6% more than in the same month of 2014.

Metropolitan transport registered an increase of 3.5%, while bus transport increased by 3.7%.

Metropolitan transport and bus transport increased in all cities.

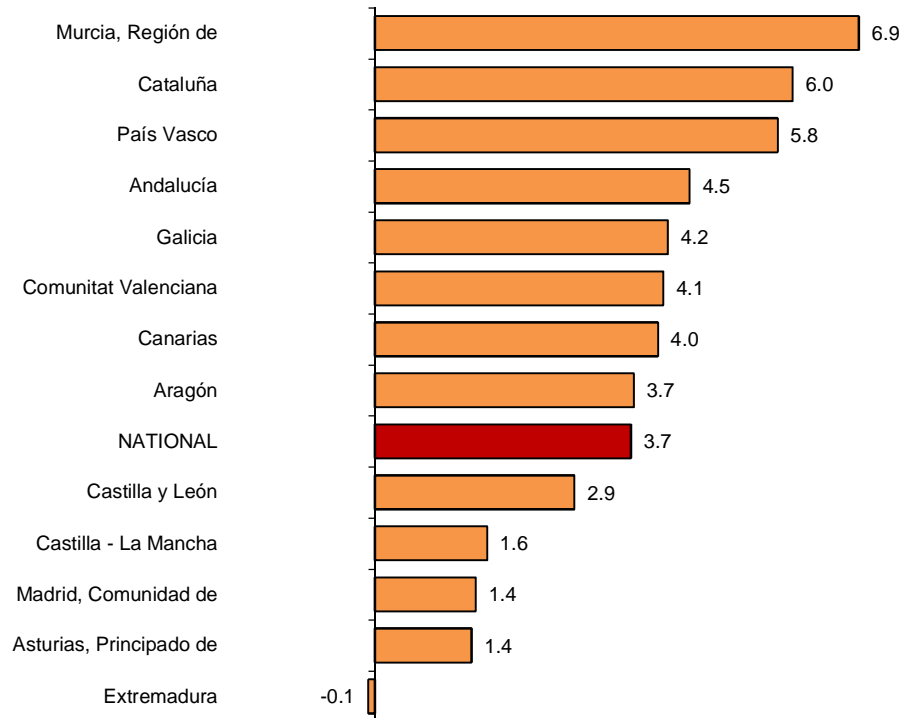
**Annual rate of city transport passengers in cities with a Metropolitan**



<sup>(1)</sup> The publication of the city transport by bus in Valencia is not allowed

The number of passengers of bus transport registered the greatest increases in Murcia (6.9%), Cataluña (6.0%) and País Vasco (5.8%). In turn, the greatest decrease was recorded in Extremadura (-0.1%).

## Annual rates of the number of passengers City transport by bus



(1) In order to protect statistical secrecy, data of the Autonomous Communities of Illes Balears, Cantabria, Comunidad Foral de Navarra and La Rioja and of the Autonomous Cities of Ceuta and Melilla are not published

### Inter-city transport

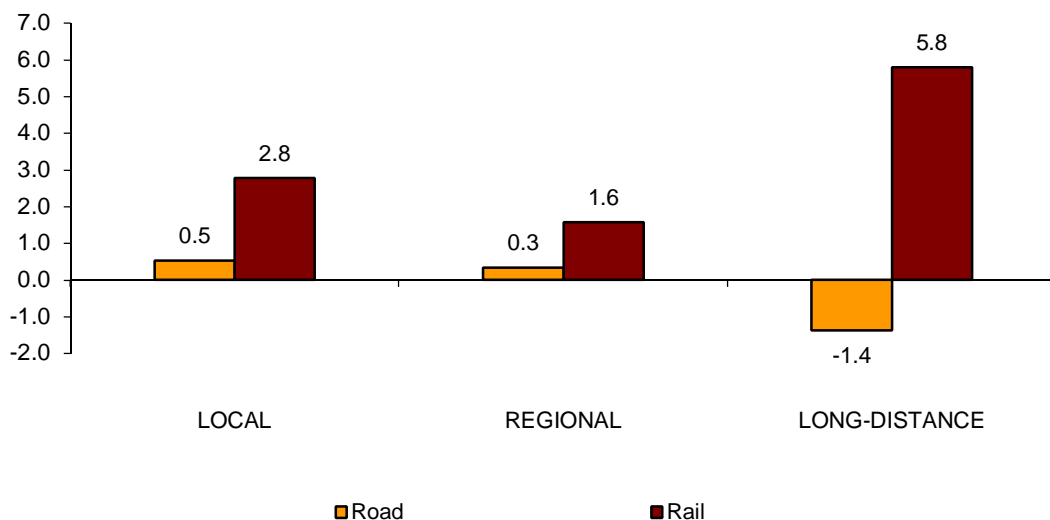
More than 107.9 million passengers used inter-city transport in June, indicating a 1.5% increase as compared with the same month of 2014.

Bus transport increased 0.4% whereas rail transport increased 2.9%. In turn, air transport increased by 3.9%.

Local distance passengers increased by 0.5% for bus transport and increased by 2.8% for rail transport. Regional distance passengers increased 0.3% for bus transport and increased 1.6% for rail transport.

Finally, long distance passengers decreased 1.4% for bus transport and increased 5.8% for rail transport.

**Annual rate of the number of passengers  
Inter-city transport by type of transport and distance**



### Special and unscheduled transport

More than 45.6 million passengers used special and unscheduled transport in June, indicating a decrease of 0.2% in the annual rate.

The number of special transport passengers decreased 2.6%, reaching more than 26.9 million users. Within this, school transport decreased 3.1%, and work transport did so by 1.3%.

In turn, unscheduled transport increased 3.3%, as compared with the same month of 2014, reaching more than 18.7 million passengers.

## Passenger Transport Statistics

June 2015

Provisional data

### 1. Passenger transport

	Passengers transported (thousands)	% variation	
		Annual	Year-to-date average
BY TYPE OF TRANSPORT	388,366	2.6	0.1
City transport	234,707	3.6	0.8
Inter-city transport	107,976	1.5	-0.4
Special and unscheduled transport	45,682	-0.2	-2.0

### 2. City transport

	Passengers transported (thousands)	% variation	
		Annual	Year-to-date average
CITY TRANSPORT	234,707	3.6	0.8
Metropolitan	93,521	3.5	1.2
Bus <sup>(1)</sup>	141,187	3.7	0.5

<sup>(1)</sup> This includes trams and funiculars

## 2.1 City transport in cities with a Metropolitan

		Passengers transported (thousands)	% variation	
			Annual	Year-to-date average
Barcelona	City bus	16,956	5.3	0.2
	Metropolitan	32,354	5.0	2.8
Bilbao	City bus	3,143	5.5	1.2
	Metropolitan	7,473	3.4	0.5
Madrid	City bus	34,924	1.4	-1.0
	Metropolitan	47,494	2.6	0.5
Palma	City bus	3,656	5.8	3.0
	Metropolitan <sup>(1)</sup>	73	1.8	0.5
Sevilla	City bus	6,246	0.7	0.9
	Metropolitan	1,055	4.5	3.0
Valencia	City bus	<sup>(2)</sup>	<sup>(2)</sup>	<sup>(2)</sup>
	Metropolitan	5,071	2.7	-0.7

<sup>(1)</sup> Estimated data

<sup>(2)</sup> Publication thereof is not allowed

## 2.2 Urban transport by bus by Autonomous City and Communiy

	Passengers transported (thousands)	% variation	
		Annual	Year-to-date average
NATIONAL	141,187	3.7	0.5
Andalucía	18,544	4.5	3.0
Aragón	10,422	3.7	1.4
Asturias, Principado de	2,727	1.4	-3.1
Balears, Illes	<sup>(1)</sup>	<sup>(1)</sup>	<sup>(1)</sup>
Canarias	4,595	4.0	2.2
Cantabria	<sup>(1)</sup>	<sup>(1)</sup>	<sup>(1)</sup>
Castilla y León	5,500	2.9	-1.2
Castilla - La Mancha	1,603	1.6	-2.1
Cataluña	23,436	6.0	0.7
Comunitat Valenciana	10,889	4.1	0.2
Extremadura	902	-0.1	-2.7
Galicia	5,123	4.2	0.3
Madrid, Comunidad de	39,124	1.4	-1.0
Murcia, Región de	1,393	6.9	0.0
Navarra, Comunidad Foral de	<sup>(1)</sup>	<sup>(1)</sup>	<sup>(1)</sup>
País Vasco	7,175	5.8	0.5
Rioja, La	<sup>(1)</sup>	<sup>(1)</sup>	<sup>(1)</sup>
Ceuta	<sup>(1)</sup>	<sup>(1)</sup>	<sup>(1)</sup>
Melilla	<sup>(1)</sup>	<sup>(1)</sup>	<sup>(1)</sup>

### 3. Inter-city transport

	Passengers transported (thousands)	% variation	
		Annual	Year-to-date average
INTER-CITY TRANSPORT	107,976	1.5	-0.4
Road	56,149	0.4	-0.7
Local	38,394	0.5	-0.8
Regional	16,370	0.3	-0.6
Long-distance	1,385	-1.4	0.3
Rail <sup>(1)</sup>	48,249	2.9	-0.4
Local rail	42,931	2.8	-0.8
Regional rail	2,580	1.6	0.5
Long-distance rail	2,738	5.8	7.7
Air (domestic)	2,813	3.9	5.2
Sea (cabotage) <sup>(2)</sup>	765	-6.9	-4.4

<sup>(1)</sup> Local and regional rail include all rail operators and Long-distance rail only includes RENFE

<sup>(2)</sup> Estimated data

### 4. Special and unscheduled transport

	Passengers transported (thousands)	% variation	
		Annual	Year-to-date average
SPECIAL AND UNSCHEDULED TRANSPORT	45,682	-0.2	-2.0
Special	26,959	-2.6	-4.3
School	19,295	-3.1	-4.4
Work	7,664	-1.3	-3.9
Unscheduled	18,723	3.3	3.5

For further information see INEbase - [www.ine.es/en/](http://www.ine.es/en/) All press releases at: [www.ine.es/prensa/prensa\\_en.htm](http://www.ine.es/prensa/prensa_en.htm)

**Press Office:** Telephone numbers: 91 583 93 63 / 94 08 – Fax: 91 583 90 87 - [gprensa@ine.es](mailto:gprensa@ine.es)

**Information Area:** Telephone number: 91 583 91 00 – Fax: 91 583 91 58 – [www.ine.es/infoine](http://www.ine.es/infoine)