

9 October 2015

Passenger Transport Statistics (PT)
August 2015. *Provisional data*

The number of passengers using public transport increases by 2.5% in August, as compared with the same month of the previous year

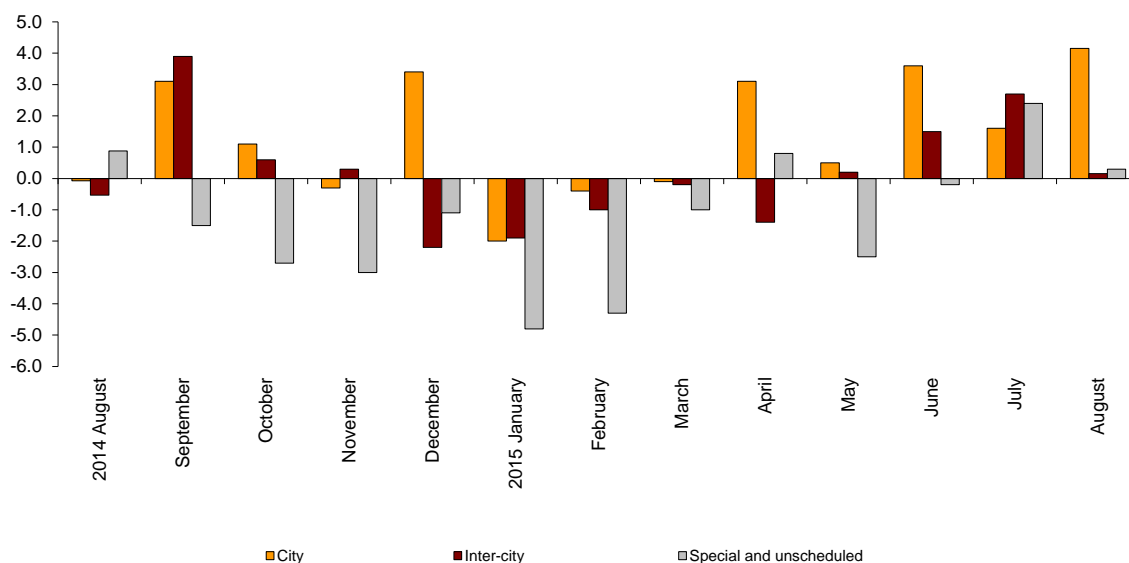
City transport increases by 4.2% in the annual rate and inter-city transport does so by 0.2%

Passengers transport evolution

More than 271.8 million passengers used public transport in August, 2.5% more than in the same month of 2014.

City transport increased by 4.2% in the annual rate and inter-city transport did so by 0.2%. Within the last one, sea transport was the one that recorded the greatest increase, with a 9.9% rate.

Annual evolution of passengers transport
Type of transport



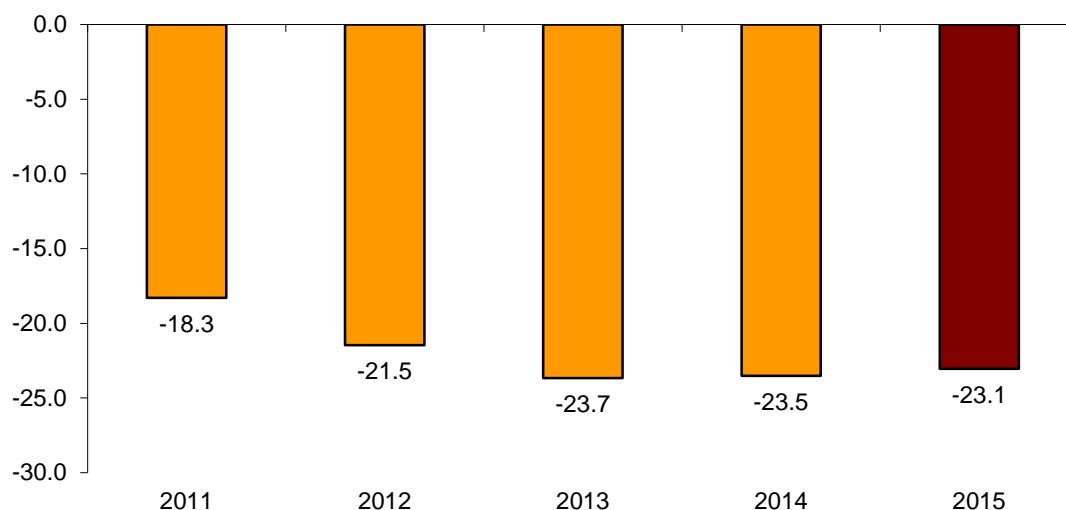
Passengers transport annual evolution, by type of transport

	City	Inter-city	Special and unschedule
2014 August	-0.1	-0.5	0.9
September	3.1	3.9	-1.5
October	1.1	0.6	-2.7
November	-0.3	0.3	-3.0
December	3.4	-2.2	-1.1
2015 January	-2.0	-1.9	-4.8
February	-0.4	-1.0	-4.3
March	-0.1	-0.2	-1.0
April	3.1	-1.4	0.8
May	0.5	0.2	-2.5
June	3.6	1.5	-0.2
July	1.6	2.7	2.4
August	4.2	0.2	0.3

Monthly rate evolution

The variation rate for the number of passengers on public transport in August 2015, as compared with July, was **-23.1%**. In order to contribute to the analysis and interpretation of data, the evolution of the monthly rate of public transport passengers in the last years is shown in the following chart.

**Evolution of the monthly rate
(month-on-month variation for August as compared with July)**



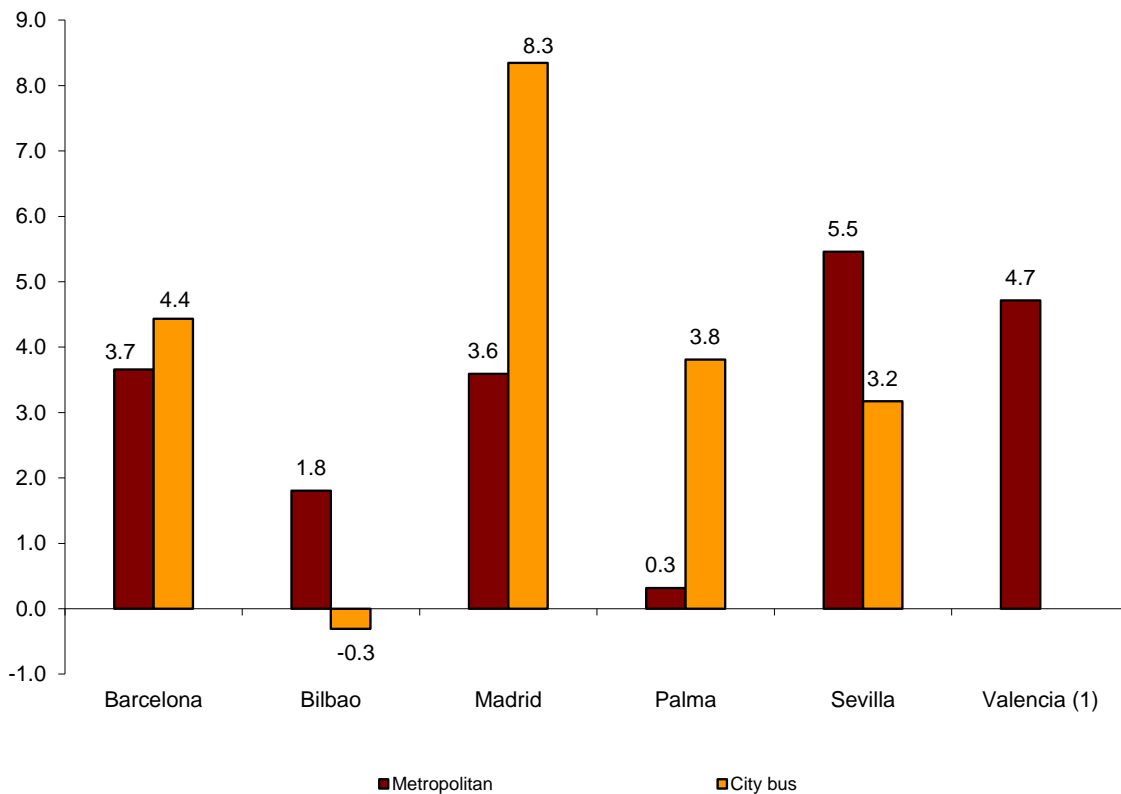
City transport

City transport was used by more than 163.1 million passengers in August, 4.2% more than in the same month of 2014.

Metropolitan transport registered an increase of 3.5%, while bus transport increased by 4.6%.

Metropolitan transport increased in all cities. Bus transport increased in all cities, except in Bilbao, where they decreased 0.3%.

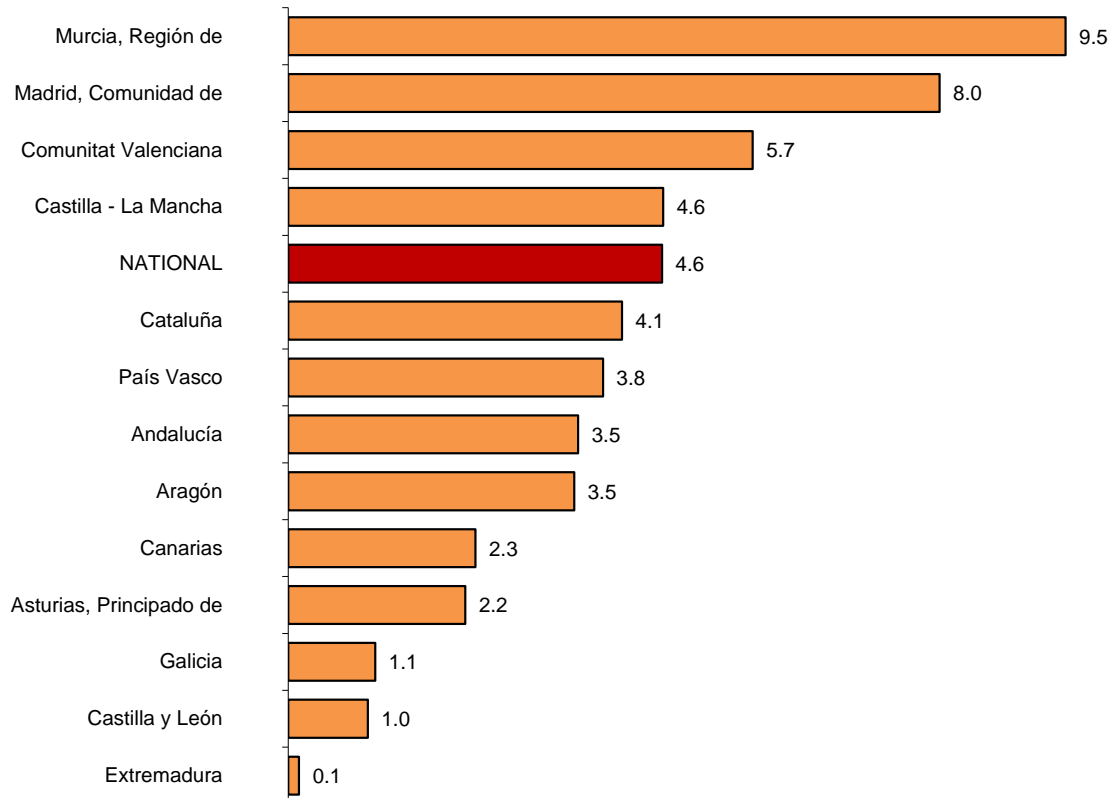
Annual rate of city transport passengers in cities with a Metropolitan



⁽¹⁾ The publication of the city transport by bus in Valencia is not allowed

The number of passengers of bus transport increased in all Autonomous Communities. Región de Murcia (9.5%), Comunidad de Madrid (8.0%) y Comunitat Valenciana (5.7%) were those that registered the greatest increases.

Annual rates of the number of passengers City transport by bus



(1) In order to protect statistical secrecy, data of the Autonomous Communities of Illes Balears, Cantabria, Comunidad Foral de Navarra and La Rioja and of the Autonomous Cities of Ceuta and Melilla are not published

Inter-city transport

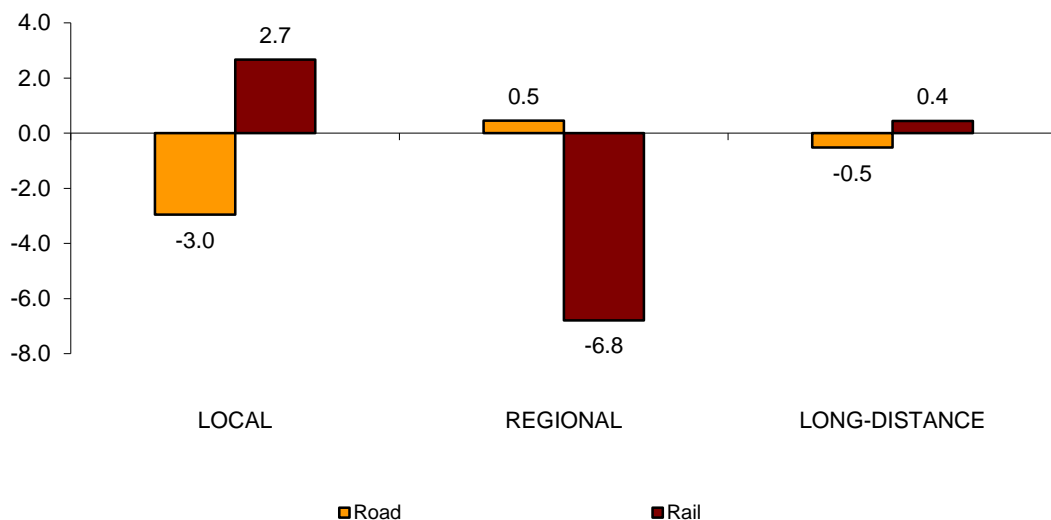
More than 88.6 million passengers used inter-city transport in August, indicating a 0.2% increase as compared with the same month of 2014.

Bus transport decreased 1.7% whereas rail transport increased 1.8%. In turn, air transport increased by 7.0% and sea transport increased by 9.9%.

Local distance passengers decreased by 3.0% for bus transport and increased by 2.7% for rail transport. Regional distance passengers increased 0.5% for bus transport and decreased 6.8% for rail transport.

Finally, long distance passengers decreased 0.5% for bus transport and increased 0.4% for rail transport.

**Annual rate of the number of passengers
Inter-city transport by type of transport and distance**



Special and unscheduled transport

More than 20.0 million passengers used special and unscheduled transport in August, indicating an increase of 0.3% in the annual rate.

The number of special transport passengers decreased 3.5%, reaching more than 5.3 million users. Within this, school transport decreased 1.9%, and work transport did so by 3.5%.

In turn, unscheduled transport increased 1.7%, as compared with the same month of 2014, reaching more than 14.7 million passengers.

Passenger Transport Statistics

August 2015

Provisional data

1. Passenger transport

	Passengers transported (thousands)	% variation	
		Annual	Year-to-date average
BY TYPE OF TRANSPORT	271,880	2.5	0.6
City transport	163,168	4.2	1.2
Inter-city transport	88,659	0.2	0.1
Special and unscheduled transport	20,052	0.3	-1.5

2. City transport

	Passengers transported (thousands)	% variation	
		Annual	Year-to-date average
CITY TRANSPORT	163,168	4.2	1.2
Metropolitan	64,087	3.5	1.4
Bus ⁽¹⁾	99,082	4.6	1.0

⁽¹⁾ This includes trams and funiculars

2.1 City transport in cities with a Metropolitan

		Passengers transported (thousands)	% variation	
			Annual	Year-to-date average
Barcelona	City bus	11,426	4.4	0.9
	Metropolitan	24,677	3.7	2.7
Bilbao	City bus	2,097	-0.3	1.3
	Metropolitan	5,707	1.8	0.7
Madrid	City bus	21,172	8.3	-0.1
	Metropolitan	29,978	3.6	0.8
Palma	City bus	3,465	3.8	3.1
	Metropolitan ⁽¹⁾	33	0.3	0.5
Sevilla	City bus	3,799	3.2	0.6
	Metropolitan	571	5.5	2.8
Valencia	City bus	⁽²⁾	⁽²⁾	⁽²⁾
	Metropolitan	3,120	4.7	-0.1

⁽¹⁾ Estimated data

⁽²⁾ Publication thereof is not allowed

2.2 Urban transport by bus by Autonomous City and Community

	Passengers transported (thousands)	% variation	
		Annual	Year-to-date average
NATIONAL	99,082	4.6	1.0
Andalucía	14,214	3.5	3.0
Aragón	6,724	3.5	1.4
Asturias, Principado de	2,550	2.2	-1.8
Balears, Illes	⁽¹⁾	⁽¹⁾	⁽¹⁾
Canarias	3,803	2.3	2.3
Cantabria	⁽¹⁾	⁽¹⁾	⁽¹⁾
Castilla y León	3,924	1.0	-0.7
Castilla - La Mancha	1,105	4.6	-1.4
Cataluña	15,703	4.1	1.3
Comunitat Valenciana	7,243	5.7	1.0
Extremadura	594	0.1	-2.3
Galicia	4,183	1.1	0.6
Madrid, Comunidad de	23,825	8.0	-0.2
Murcia, Región de	716	9.5	1.1
Navarra, Comunidad Foral de	⁽¹⁾	⁽¹⁾	⁽¹⁾
País Vasco	5,683	3.8	1.3
Rioja, La	⁽¹⁾	⁽¹⁾	⁽¹⁾
Ceuta	⁽¹⁾	⁽¹⁾	⁽¹⁾
Melilla	⁽¹⁾	⁽¹⁾	⁽¹⁾

3. Inter-city transport

	Passengers transported (thousands)	% variation	
		Annual	Year-to-date average
INTER-CITY TRANSPORT	88,659	0.2	0.1
Road	47,870	-1.7	-0.8
Local	29,883	-3.0	-1.0
Regional	16,289	0.5	-0.4
Long-distance	1,699	-0.5	0.4
Rail ⁽¹⁾	36,110	1.8	0.7
Local rail	31,086	2.7	0.4
Regional rail	2,424	-6.8	0.3
Long-distance rail	2,600	0.4	6.3
Air (domestic)	3,299	7.0	5.7
Sea (cabotage)	1,380	9.9	3.8

⁽¹⁾ Local and regional rail include all rail operators and Long-distance rail only includes RENFE

4. Special and unscheduled transport

	Passengers transported (thousands)	% variation	
		Annual	Year-to-date average
SPECIAL AND UNSCHEDULED TRANSPORT	20,052	0.3	-1.5
Special	5,330	-3.5	-4.1
School	110	-1.9	-4.4
Work	5,220	-3.5	-3.4
Unscheduled	14,722	1.7	3.3

For further information see INEbase - www.ine.es/en/ All press releases at: www.ine.es/prensa/prensa_en.htm

Press Office: Telephone numbers: 91 583 93 63 / 94 08 – Fax: 91 583 90 87 - gprensa@ine.es

Information Area: Telephone number: 91 583 91 00 – Fax: 91 583 91 58 – www.ine.es/infoine