

Passenger Transport Statistics (PT)

September 2014. *Provisional data*

The number of passengers using public transport increases by 2.9% in September, as compared with the same month of the previous year

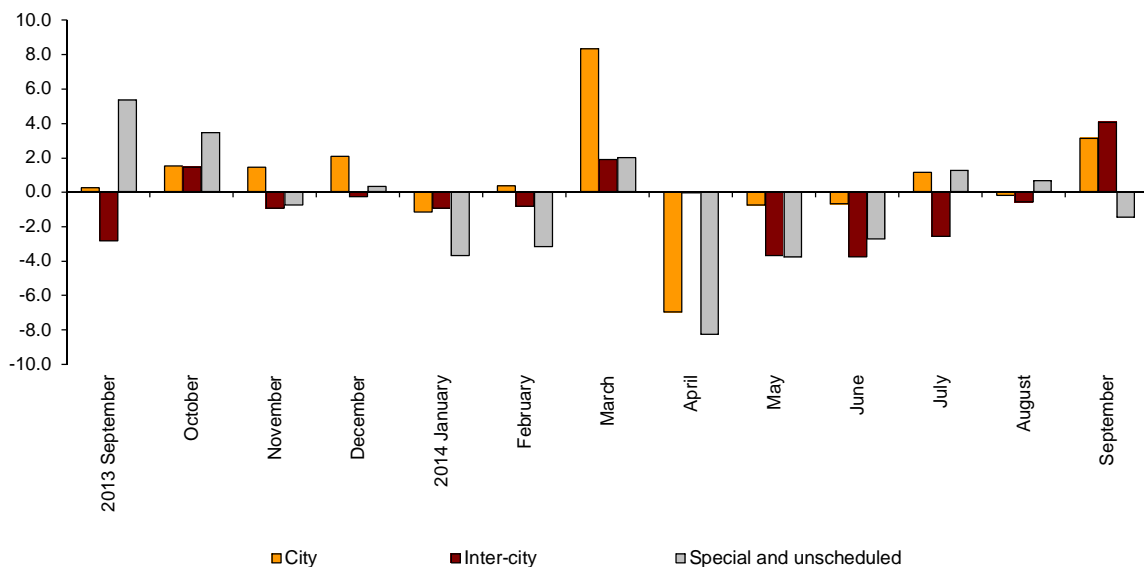
City transport increases by 3.1% in the annual rate and inter-city transport does so by 4.1%

Passengers transport evolution

More than 373.7 million passengers used public transport in September, 2.9% more than in the same month of 2013.

City transport increased by 3.1% and inter-city transport did so by 4.1%. Within the last one, rail transport was the one that recorded the greatest increase (9.3%).

**Annual evolution of passengers transport
Type of transport**



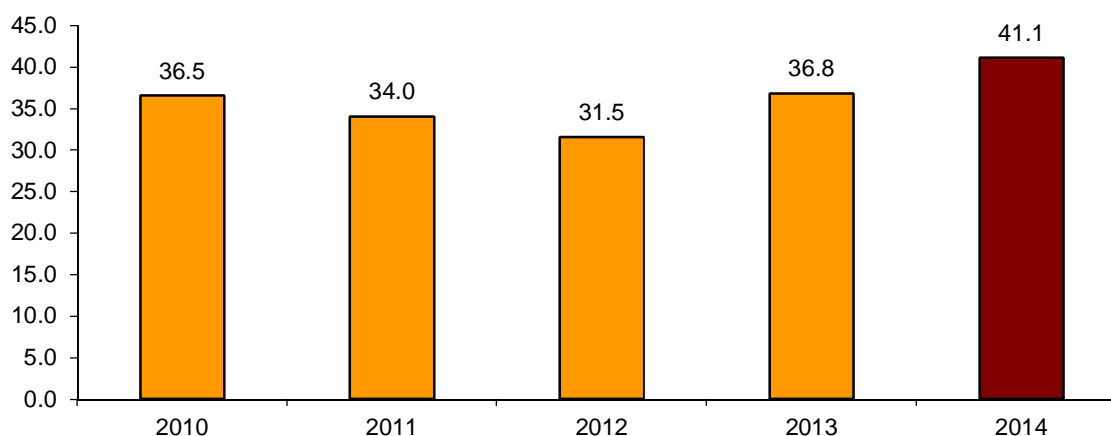
Passengers transport annual evolution, by type of transport

	City	Inter-city	Special and unschedule
2013 September	0.3	-2.8	5.4
October	1.5	1.5	3.5
November	1.4	-0.9	-0.8
December	2.1	-0.3	0.3
2014 January	-1.2	-0.9	-3.7
February	0.4	-0.8	-3.2
March	8.4	1.9	2.0
April	-7.0	-0.1	-8.3
May	-0.8	-3.7	-3.8
June	-0.7	-3.8	-2.7
July	1.1	-2.6	1.3
August	-0.2	-0.6	0.7
September	3.1	4.1	-1.5

Monthly rate evolution

The variation rate for the number of passengers on public transport in September 2014, as compared with August, was 41.1%. In order to contribute to the analysis and interpretation of the data, the following chart shows the variation between September and August for the last five years.

**Evolution of the monthly rate
(month-on-month variation for September as compared with August)**



City transport

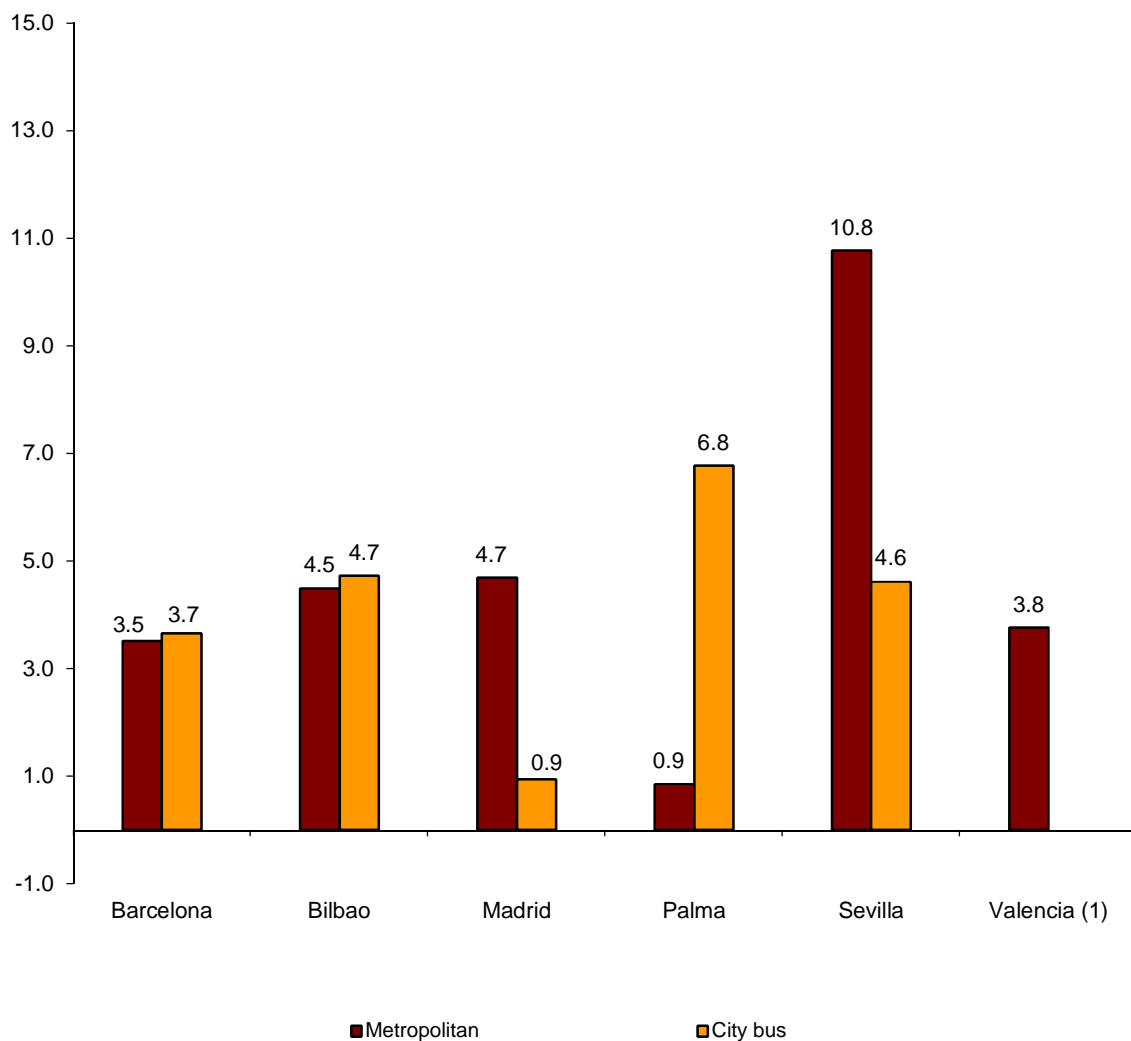
City transport was used by more than 225.0 million passengers in September, 3.1% more than in the same month of 2013.

Metropolitan transport registered an increase of 4.3% and bus transport increased by 2.4%.

Metropolitan transport increased in all cities. Sevilla (10.8%) registered the greatest increase.

Bus transport registered positive rates in all the cities using metropolitan transport, being Palma the one that recorded the greatest increase (6.8%).

Annual rate of city transport passengers in cities with a Metropolitan

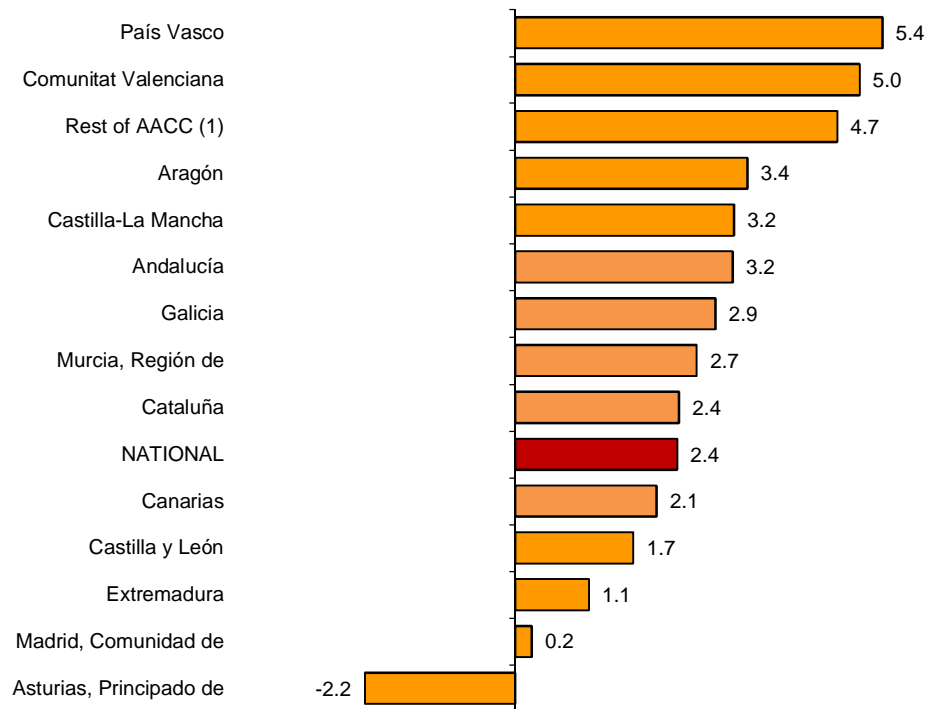


⁽¹⁾The publication of the city transport by bus in Valencia is not allowed

The number of passengers of bus transport increased in all the Autonomous Communities, except for Principado de Asturias (-2.2%).

In turn, País Vasco (5.4%) and Comunitat Valenciana (5.0%) recorded the greatest increases.

Annual rates of the number of passengers City transport by bus



⁽¹⁾ In order to protect statistical secrecy, the passengers of the Autonomous Communities of Illes Balears, Cantabria, Comunidad Foral de Navarra and La Rioja and of the Autonomous Cities of Ceuta and Melilla have been grouped

Inter-city transport

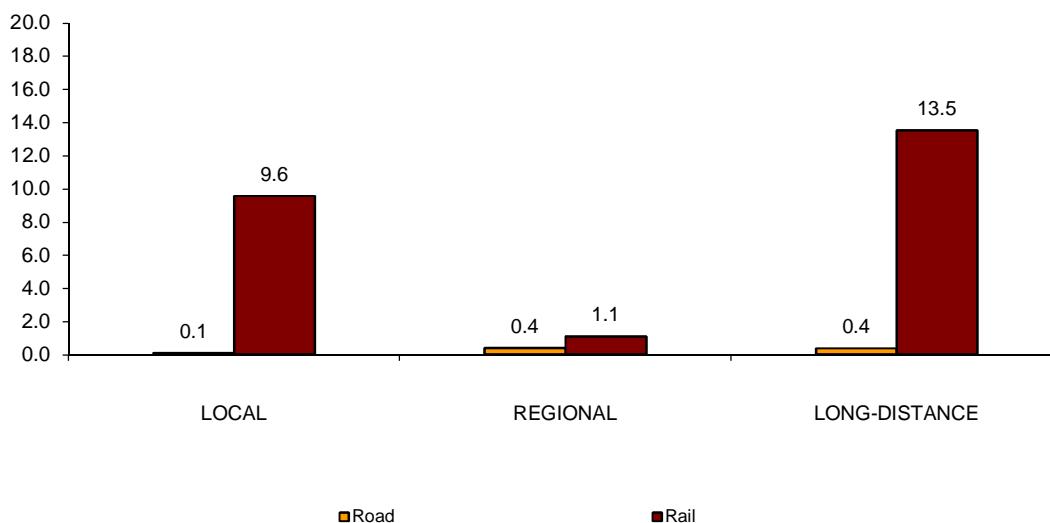
More than 107.6 million passengers used inter-city transport in September, indicating a 4.1% increase as compared with the same month of 2013.

By type of inter-city transport, bus transport increased by 0.2% and rail transport did so by 9.3%. In turn, air transport increased by 5.5%.

Local distance passengers recorded a 0.1% rate for bus transport and a 9.6% rate for rail transport. Regional distance passengers increased 0.4% for bus transport and 1.1% for rail transport.

Finally, long distance passengers increased 0.4% for bus transport and 13.5% in rail transport.

**Annual rate of the number of passengers
Inter-city transport by type of transport and distance**



Special and unscheduled transport

More than 40.9 million passengers used special and unscheduled transport in September, indicating a decrease of 1.5% in the annual rate.

The number of special transport passengers decreased 3.1%, reaching more than 26.1 million users. Within this, school transport decreased 1.9%, and work transport did so by 5.8%.

In turn, unscheduled transport increased 1.4%, as compared with the same month of the previous year, reaching more than 14.8 million passengers.

Passenger Transport Statistics

September 2014

Provisional data

1. Passenger transport

	Passengers transported (thousands)	% variation	
		Annual	Year-to-date average
BY TYPE OF TRANSPORT	373,721	2.9	-0.4
City transport	225,061	3.1	0.3
Inter-city transport	107,677	4.1	-0.8
Special and unscheduled transport	40,983	-1.5	-2.6

2. City transport

	Passengers transported (thousands)	% variation	
		Annual	Year-to-date average
CITY TRANSPORT	225,061	3.1	0.3
Metropolitan	90,695	4.3	0.5
Bus ⁽¹⁾	134,366	2.4	0.1

⁽¹⁾ This includes trams and funiculars

2.1 City transport in cities with a Metropolitan

		Passengers transported (thousands)	% variation	
			Annual	Year-to-date average
Barcelona	City bus	15,502	3.7	1.2
	Metropolitan	30,966	3.5	1.2
Bilbao	City bus	3,046	4.7	4.3
	Metropolitan	7,246	4.5	-0.6
Madrid	City bus	32,536	0.9	-0.1
	Metropolitan	46,320	4.7	0.3
Palma	City bus	3,502	6.8	1.8
	Metropolitan	87	0.9	0.2
Sevilla	City bus	6,197	4.6	3.6
	Metropolitan	1,123	10.8	4.0
Valencia	City bus	(1)	(1)	(1)
	Metropolitan	4,953	3.8	-0.1

(1) Publication thereof is not allowed

2.2 City bus transport

	Passengers transported (thousands)	% variation	
		Annual	Year-to-date average
NATIONAL	134,366	2.4	0.1
Andalucía	17,661	3.2	0.2
Aragón	9,833	3.4	-0.8
Asturias, Principado de	2,732	-2.2	-1.4
Canarias	4,473	2.1	1.9
Castilla y León	5,459	1.7	-1.6
Castilla - La Mancha	1,562	3.2	-2.6
Cataluña	21,413	2.4	1.3
Comunitat Valenciana	10,307	5.0	1.7
Extremadura	924	1.1	-2.1
Galicia	5,218	2.9	-0.3
Madrid, Comunidad de	36,642	0.2	-0.9
Murcia, Región de	1,458	2.7	3.1
País Vasco	7,072	5.4	3.1
Rest of AACC ⁽¹⁾	9,613	4.7	-1.0

⁽¹⁾ In order to protect statistical secrecy, the passengers of the Autonomous Communities of Illes Balears, Cantabria, Comunidad Foral de Navarra and La Rioja and of the Autonomous Cities of Ceuta and Melilla have been grouped

3. Inter-city transport

	Passengers transported (thousands)	% variation	
		Annual	Year-to-date average
INTER-CITY TRANSPORT	107,677	4.1	-0.8
Road	56,607	0.2	-2.0
Local	37,994	0.1	-2.7
Regional	17,185	0.4	-0.1
Long-distance	1,429	0.4	-4.1
Rail ⁽¹⁾	47,455	9.3	0.5
Local rail	42,452	9.6	0.1
Regional rail	2,461	1.1	-3.7
Long-distance rail	2,542	13.5	14.5
Air (domestic)	2,746	5.5	1.5
Sea (cabotage) ⁽²⁾	870	-8.5	-4.0

⁽¹⁾ Local and regional rail include all rail operators and Long-distance rail only includes RENFE

⁽²⁾ Estimated data

4. Special and unscheduled transport

	Passengers transported (thousands)	% variation	
		Annual	Year-to-date average
SPECIAL AND UNSCHEDULED TRANSPORT	40,983	-1.5	-2.6
Special	26,180	-3.1	-5.8
School	18,550	-1.9	-5.8
Work	7,631	-5.8	-5.7
Unscheduled	14,803	1.4	4.0

For further information see INEbase - www.ine.es/en/ All press releases at: www.ine.es/prensa/prensa_en.htm

Press Office: Telephone numbers: 91 583 93 63 / 94 08 – Fax: 91 583 90 87 - gprensa@ine.es

Information Area: Telephone number: 91 583 91 00 – Fax: 91 583 91 58 – www.ine.es/infoine