

**Passenger Transport Statistics (PT)**

October 2013. *Provisional data*

**The number of passengers using public transport decreases 1.7% in October, as compared with the same month of the previous year**

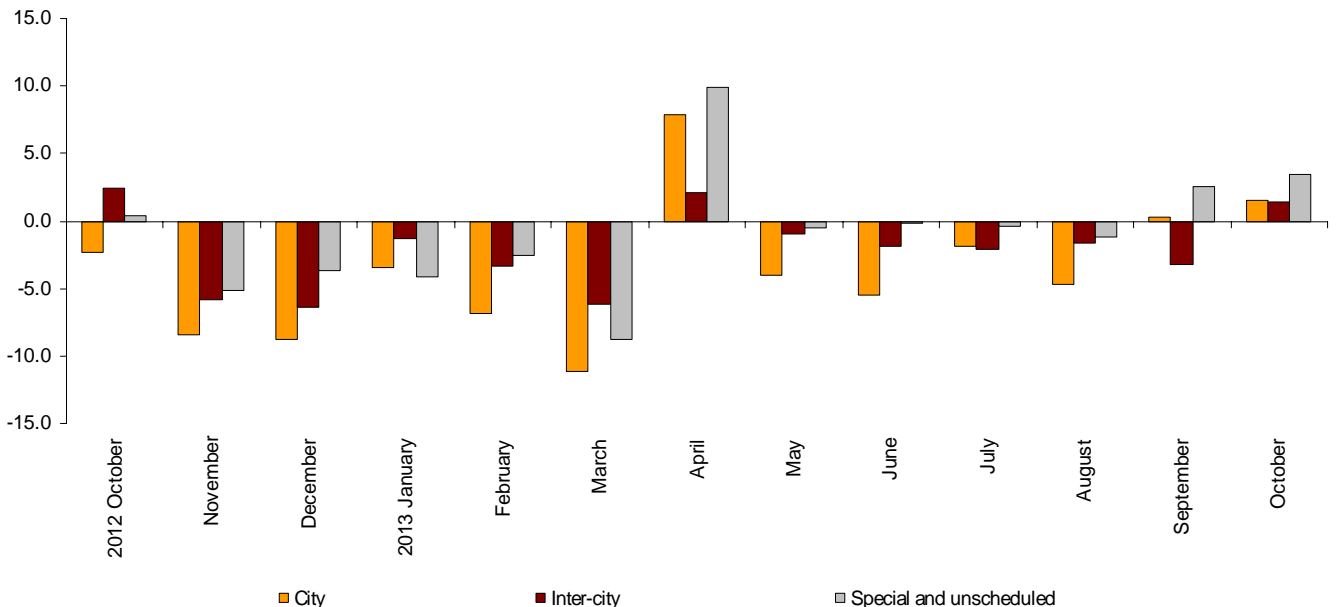
**The city transport and inter-city transport increase 1.5% in the annual rate**

**Passengers transport evolution**

More than 429.9 million passengers used public transport in October, 1.7% more than in the same month of the previous year.

Both city transport and inter-city transport increased 1.5% in the annual rate. Within the inter-city transport, the most significant drop was that of air transport, with a rate of -10.9%.

**Annual evolution of passengers transport**  
Type of transport



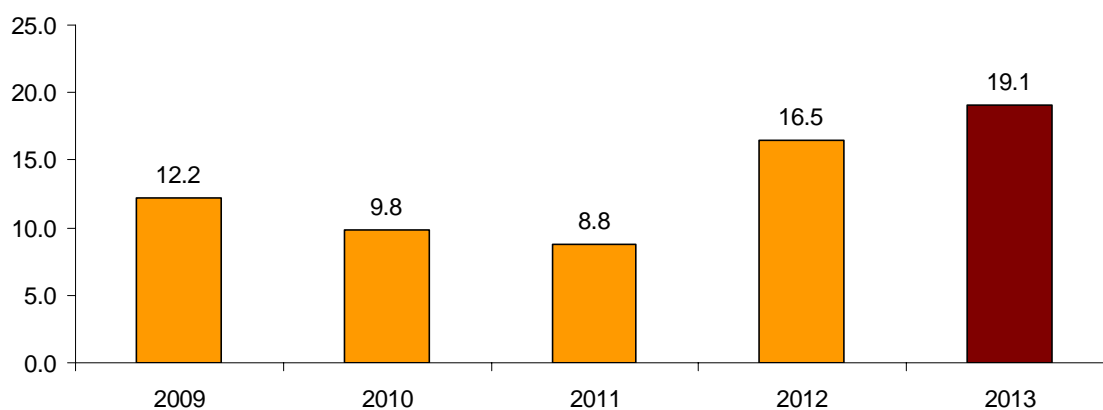
**Passengers transport annual evolution, by type of transport**

	City	Inter-city	Special and unscheduled
2012 October	-2.3	2.4	0.4
November	-8.4	-5.8	-5.2
December	-8.8	-6.4	-3.7
2013 January	-3.5	-1.3	-4.1
February	-6.9	-3.3	-2.5
March	-11.1	-6.2	-8.8
April	7.8	2.1	9.9
May	-4.1	-0.9	-0.5
June	-5.5	-1.8	-0.1
July	-1.9	-2.1	-0.4
August	-4.7	-1.6	-1.1
September	0.3	-3.2	2.5
October	1.5	1.5	3.5

**Monthly rate evolution<sup>1</sup>**

The variation rate for the number of passengers on public transport in October, as compared with September was 19.1%.

**Evolution of the monthly rate  
(month-on-month variation for October as compared with September)**



<sup>1</sup> In order to contribute to the analysis and interpretation of the data, this section has been added including the evolution of the monthly rate for the number of users of public transport in recent years. The month-on-month rates of this type of series may have a seasonal behaviour; therefore it is recommended to evaluate them in relation to the item of data for the same month in previous years.

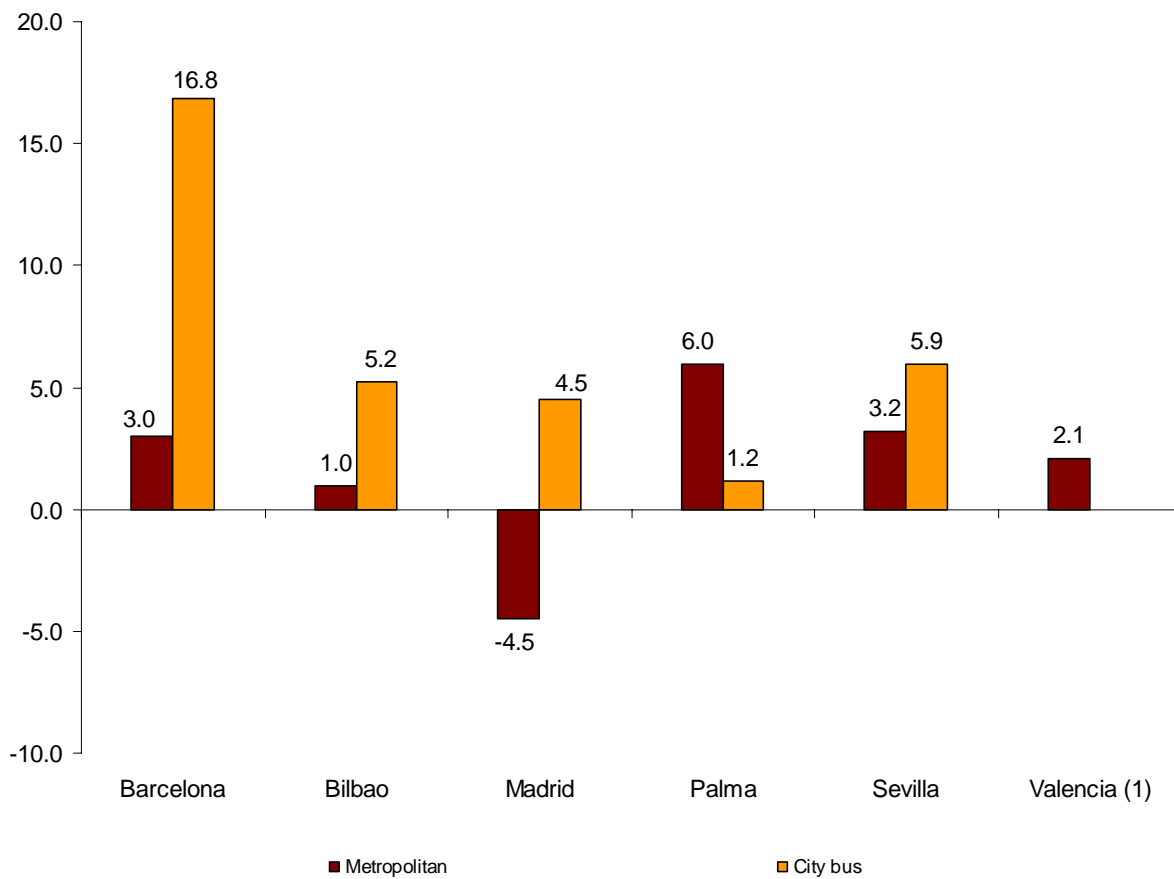
### City transport

City transport was used by over 258.5 million passengers in October, 1.5% more than the same month of the previous year.

Metropolitan transport registered a decrease of 1.2%, whereas bus transport increased by 3.4%.

Metropolitan transport registered a decrease in Madrid (-4.5%) and it increased in the remaining cities. In turn, bus transport increased in all cities using metropolitan transport and Barcelona (16.8%) registered the greatest increase.

**Interannual rate of city transport passengers in cities with a Metropolitan**

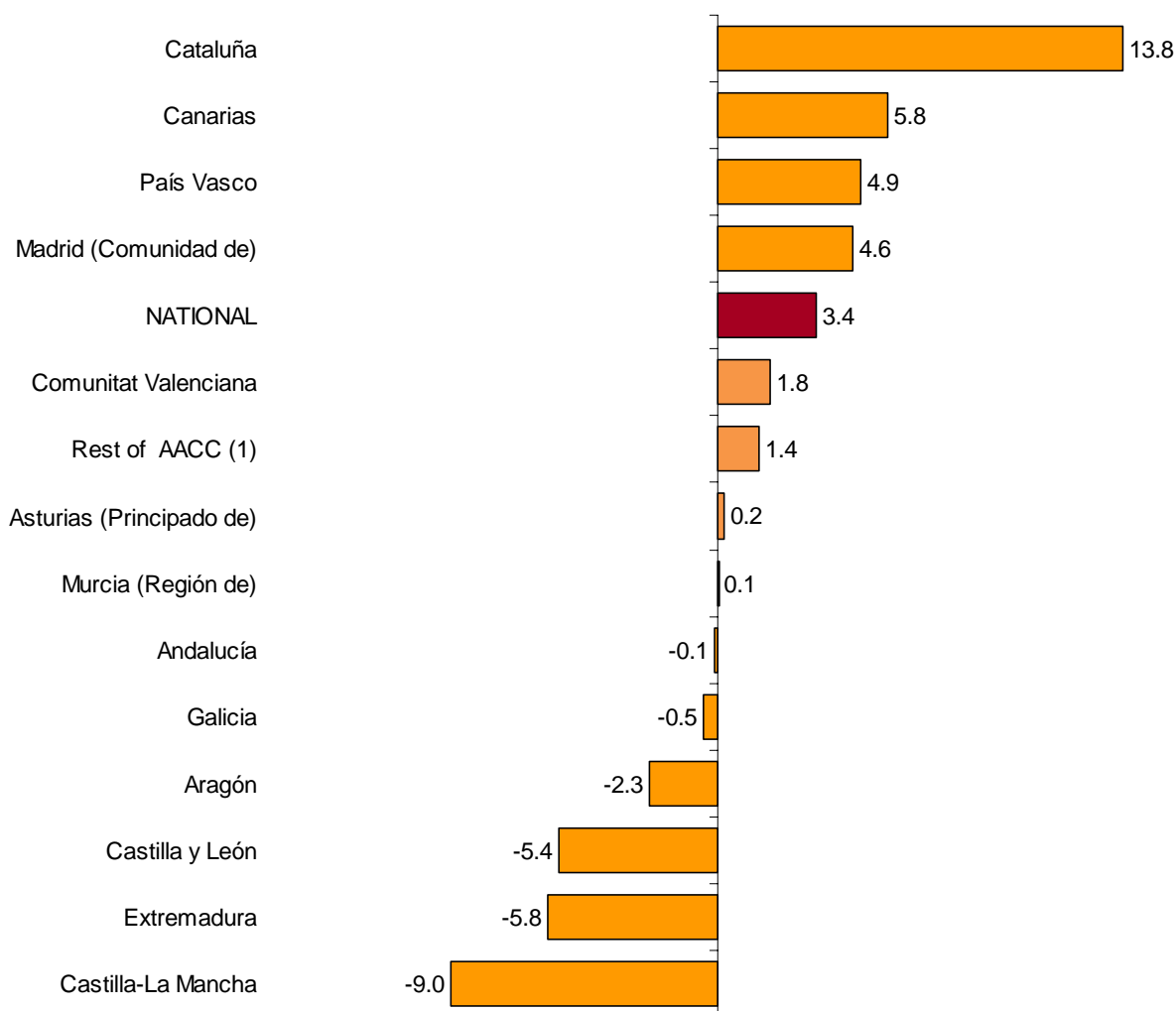


<sup>(1)</sup>The publication of the city transport by bus in Valencia is not allowed.

Six Autonomous Communities registered an annual increase in the number of passengers in the transport by bus, as compared with October 2012. Castilla-La Mancha (-9.0%), Extremadura (-5.8%) and Castilla y León (-5.4%) registered the greatest decreases.

In turn, Cataluña (13.8%), Canarias (5.8%) and País Vasco (4.9%) registered the greatest increases.

## Annual rate of the number of passengers City transport by bus



(1) In order to protect statistical secrecy, the passengers of the Autonomous Communities of Illes Balears, Cantabria, Comunidad Foral de Navarra and La Rioja and of the Autonomous Cities of Ceuta and Melilla have been grouped.

### Inter-city transport

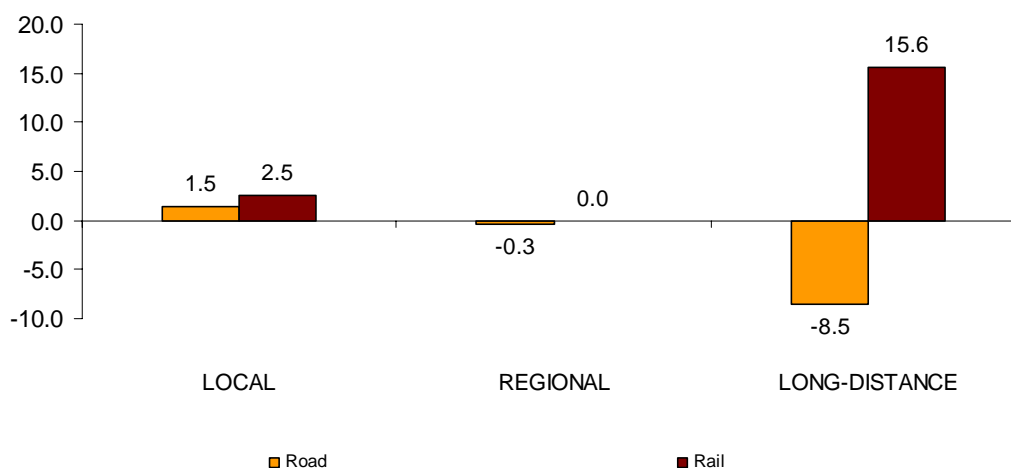
More than 120.1 million passengers used inter-city transport in October, indicating a 1.5% increase, as compared with the same month of 2012.

Air transport decreased 10.9%, whereas bus transport increased 0.7% and rail transport increased 2.9%.

Local distance passengers increased 1.5% for bus transport and 2.5% for rail transport. Regional passengers distance decreased 0.3% for bus transport and remains the same (0.0%) for rail transport.

Finally, long-distance passengers decreased 8.5% in bus transport, while rail transport increased 15.6%.

**Annual rate of the number of passengers  
Inter-city transport by type of transport and distance**



### Special and unscheduled transport

Over 51.2 million passengers used special and unscheduled transport in October, indicating an increase of 3.5% in the annual rate.

The number of special transport passengers increased 3.9%, reaching over 37.0 million users. Within this, school transport increased 2.6%, while work transport increased 8.7%.

In turn, unscheduled transport increased 2.3%, as compared with the same month of the previous year, reaching more than 14.2 million passengers.

## Passenger Transport Statistics

October 2013

Provisional data

### 1. Passenger transport

	Passengers transported (thousands)	% variation	
		Annual	Year-to-date average
BY TYPE OF TRANSPORT	429,990	1.7	-2.3
City transport	258,509	1.5	-2.9
Inter-city transport	120,196	1.5	-1.6
Special and unscheduled transport	51,285	3.5	-0.3

### 2. City transport

	Passengers transported (thousands)	% variation	
		Annual	Year-to-date average
CITY TRANSPORT	258,509	1.5	-2.9
Metropolitan	102,301	-1.2	-5.6
Bus <sup>(1)</sup>	156,208	3.4	-1.0

<sup>(1)</sup> This includes trams and funiculars

## 2.1 City transport in cities with a Metropolitan

		Passengers transported (thousands)	% variation	
			Annual	Year-to-date average
Barcelona	City bus	18,587	16.8	0.1
	Metropolitan	34,512	3.0	-1.9
Bilbao	City bus	3,277	4.9	0.0
	Metropolitan	7,848	1.0	-0.5
Madrid	City bus	39,719	4.5	-1.2
	Metropolitan	52,885	-4.5	-8.6
Palma	City bus	3,520	1.2	-1.8
	Metropolitan	152	6.0	0.9
Sevilla	City bus	7,468	5.9	1.0
	Metropolitan	1,367	3.2	-2.0
Valencia	City bus	(1)	(1)	(1)
	Metropolitan	5,537	2.1	-6.9

(1) Publication thereof is not allowed

## 2.2 City bus transport

	Passengers transported (thousands)	% variation	
		Annual	Year-to-date average
NATIONAL	156,208	3.4	-1.0
Andalucía	20,491	-0.1	-1.7
Aragón	11,617	-2.3	1.5
Asturias, Principado de	3,124	0.2	-0.7
Canarias	4,958	5.8	0.7
Castilla y León	6,219	-5.4	-6.5
Castilla - La Mancha	1,866	-9.0	-13.4
Cataluña	25,655	13.8	0.6
Comunitat Valenciana	11,339	1.8	-2.0
Extremadura	1,156	-5.8	-4.5
Galicia	5,769	-0.5	-1.3
Madrid, Comunidad de	44,749	4.6	-0.6
Murcia, Región de	1,813	0.1	-10.9
País Vasco	7,326	4.9	0.6
Rest of AACC <sup>(1)</sup>	10,128	1.4	-1.2

<sup>(1)</sup> In order to protect statistical secrecy, the passengers of the Autonomous Communities of Illes Balears, Cantabria, Comunidad Foral de Navarra and La Rioja and of the Autonomous Cities of Ceuta and Melilla have been grouped

### 3. Inter-city transport

	Passengers transported (thousands)	% variation	
		Annual	Year-to-date average
<b>INTER-CITY TRANSPORT</b>	120,196	1.5	-1.6
Road	62,487	0.7	-1.6
Local	43,632	1.5	-0.6
Regional	17,452	-0.3	-3.2
Long-distance	1,404	-8.5	-7.4
Rail <sup>(1)</sup>	54,593	2.9	-1.0
Local rail	49,499	2.5	-1.5
Regional rail	2,834	0.0	-2.4
Long-distance rail	2,260	15.6	12.5
Air (domestic)	2,394	-10.9	-15.5
Sea (cabotage) <sup>(2)</sup>	721	7.5	8.3

<sup>(1)</sup> Local and regional rail include all rail operators and Long-distance rail only includes RENFE

<sup>(2)</sup> Estimated data

### 4. Special and unscheduled transport

	Passengers transported (thousands)	% variation	
		Annual	Year-to-date average
<b>SPECIAL AND UNSCHEDULED TRANSPORT</b>	51,285	3.5	-0.3
Special	37,077	3.9	0.7
School	28,441	2.6	-1.1
Work	8,636	8.7	5.4
Unscheduled	14,207	2.3	-2.3

For further information see INEbase - [www.ine.es/en/](http://www.ine.es/en/) All press releases at: [www.ine.es/prensa/prensa\\_en.htm](http://www.ine.es/prensa/prensa_en.htm)

**Press Office:** Telephone numbers: 91 583 93 63 / 94 08 – Fax: 91 583 90 87 - [gprensa@ine.es](mailto:gprensa@ine.es)

**Information Area:** Telephone number: 91 583 91 00 – Fax: 91 583 91 58 – [www.ine.es/infoine](http://www.ine.es/infoine)