

Passenger Transport Statistics (PT)
October 2014. *Provisional data*

The number of passengers using public transport increases by 0.5% in October, as compared with the same month of the previous year

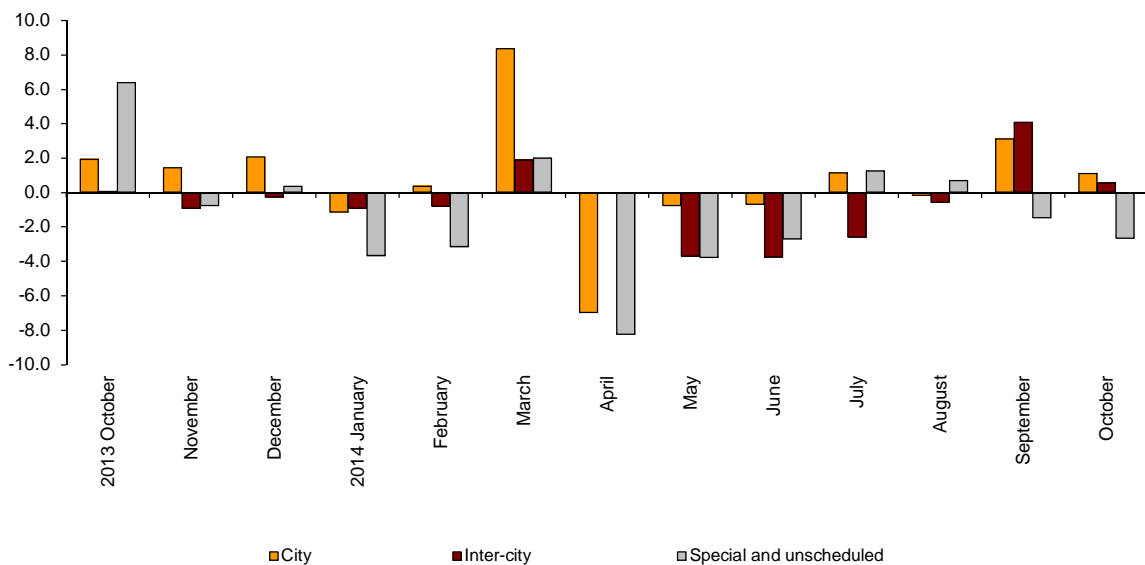
City transport increases by 1.1% in the annual rate and inter-city transport does so by 0.6%

Passengers transport evolution

More than 433.2 million passengers used public transport in October, 0.5% more than in the same month of 2013.

City transport increased by 1.1% and inter-city transport did so by 0.6%. Within the last one, rail transport was the one that recorded the greatest increase (5.4%).

Annual evolution of passengers transport
Type of transport



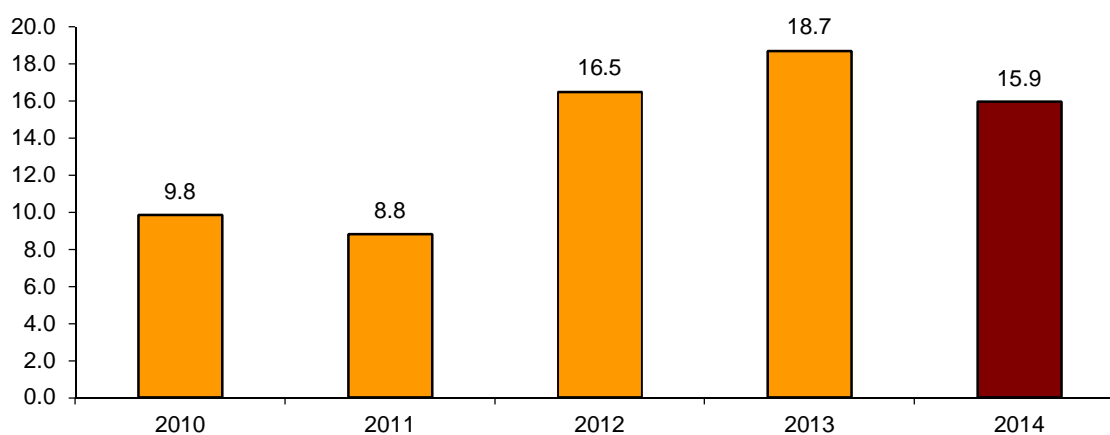
Passengers transport annual evolution, by type of transport

	City	Inter-city	Special and unschedule
2013 October	1.9	0.1	6.4
November	1.4	-0.9	-0.8
December	2.1	-0.3	0.3
2014 January	-1.2	-0.9	-3.7
February	0.4	-0.8	-3.2
March	8.4	1.9	2.0
April	-7.0	-0.1	-8.3
May	-0.8	-3.7	-3.8
June	-0.7	-3.8	-2.7
July	1.1	-2.6	1.3
August	-0.2	-0.6	0.7
September	3.1	4.1	-1.5
October	1.1	0.6	-2.7

Monthly rate evolution

The variation rate for the number of passengers on public transport in October 2014, as compared with September, was 15.9%. In order to contribute to the analysis and interpretation of the data, the following chart shows the variation between October and September for the last five years.

**Evolution of the monthly rate
(month-on-month variation for October as compared with September)**



City transport

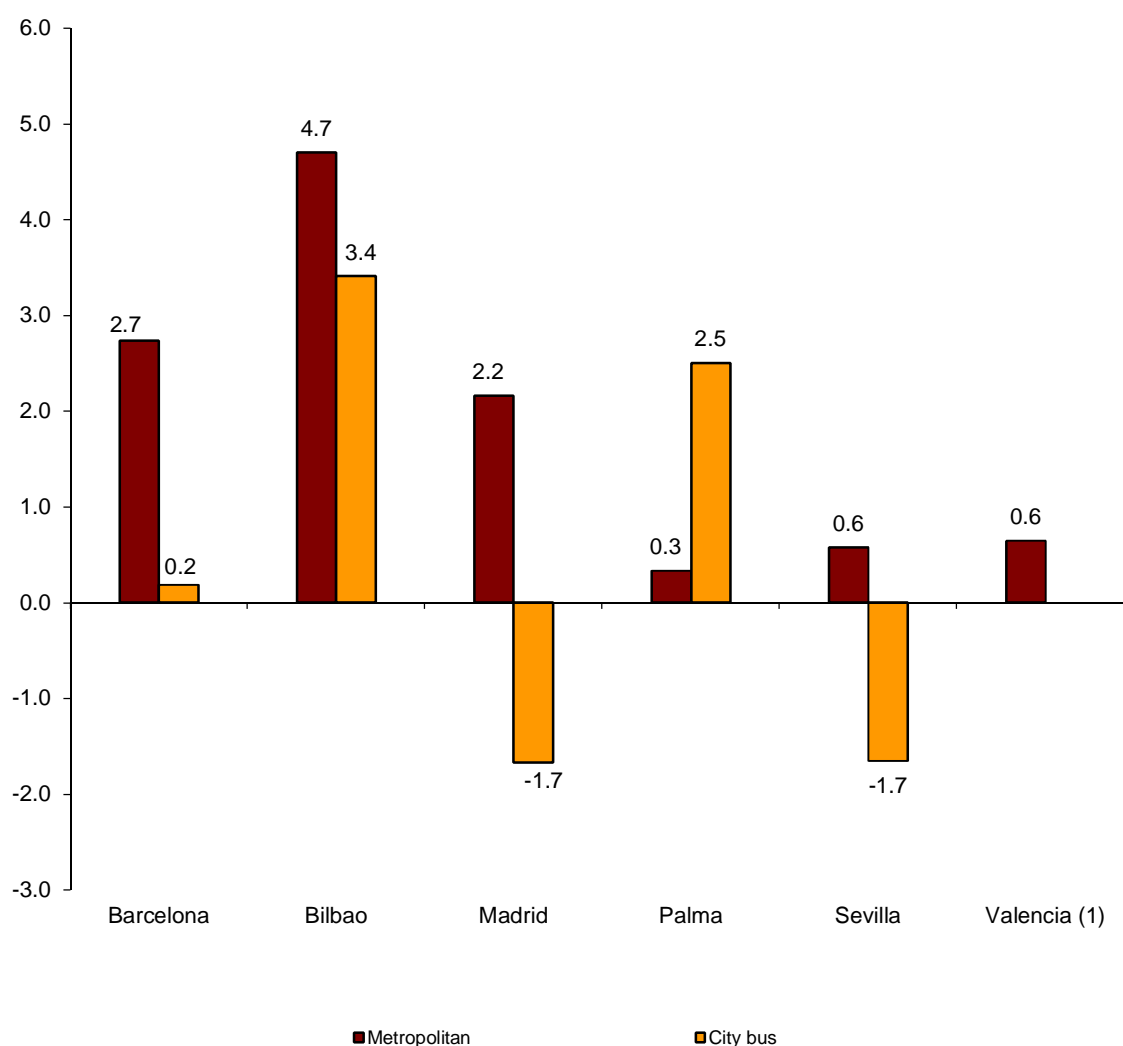
City transport was used by more than 262.4 million passengers in October, 1.1% more than in the same month of 2013.

Metropolitan transport registered an increase of 2.4% and bus transport increased by 0.3%.

Metropolitan transport increased in all cities. Bilbao (4.7%) registered the greatest increase.

Bus transport registered positive rates in all the cities using metropolitan transport, except for Madrid and Sevilla, both at -1.7%.

Annual rate of city transport passengers in cities with a Metropolitan

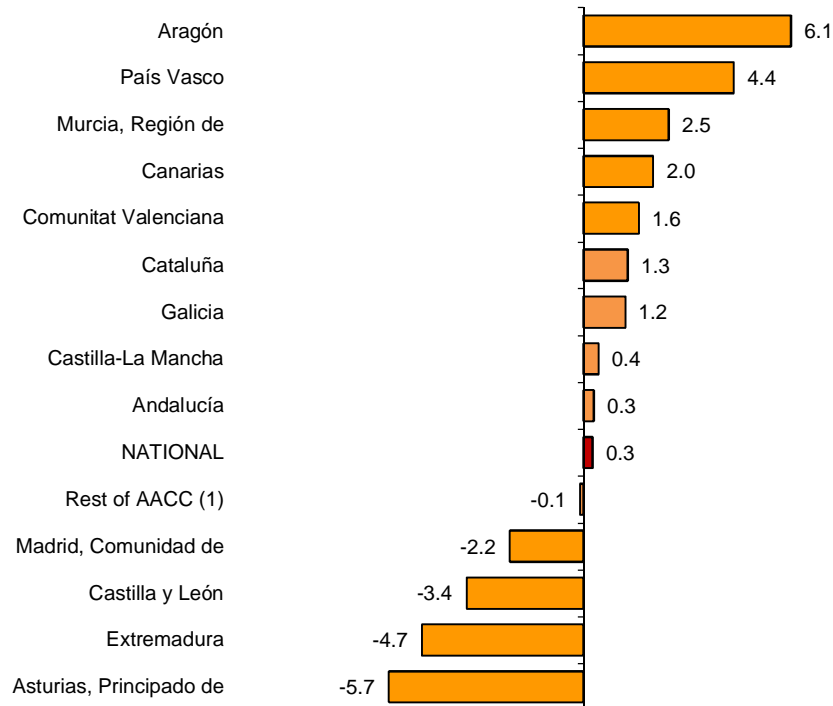


⁽¹⁾ The publication of the city transport by bus in Valencia is not allowed

The number of passengers of bus transport increased in nine Autonomous Communities, Aragón (6.1%) and País Vasco (4.4%) being those that registered the greatest increases.

In turn, Principado de Asturias (-5.7%) and Extremadura (-4.7%) recorded the greatest decreases.

Annual rates of the number of passengers City transport by bus



⁽¹⁾ In order to protect statistical secrecy, the passengers of the Autonomous Communities of Illes Balears, Cantabria, Comunidad Foral de Navarra and La Rioja and of the Autonomous Cities of Ceuta and Melilla have been grouped

Inter-city transport

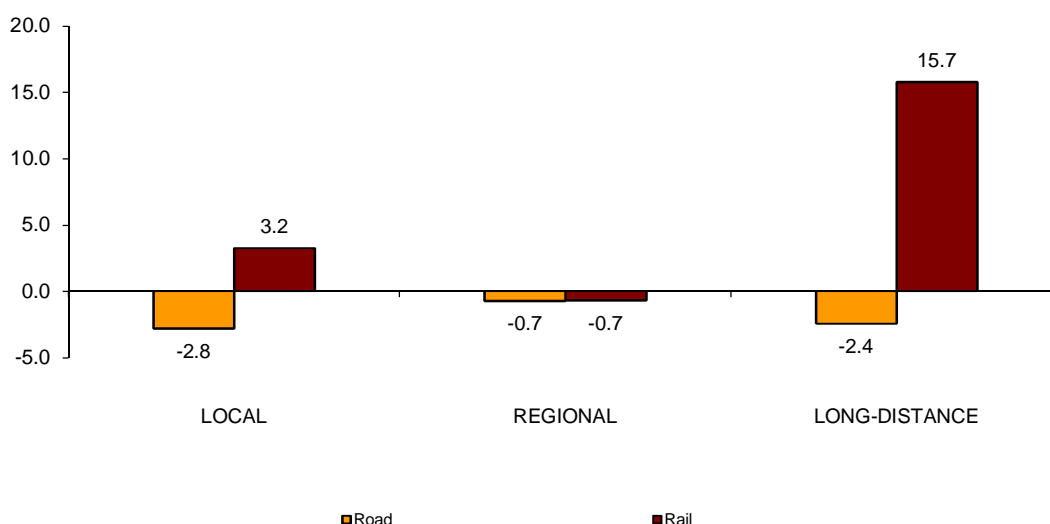
More than 119.2 million passengers used inter-city transport in October, indicating a 0.6% increase as compared with the same month of 2013.

By type of inter-city transport, bus transport decreased by 2.2%, while rail transport increased by 3.6%, and air transport did so by 5.4%.

Local distance passengers recorded a -2.8% rate for bus transport and a 3.2% rate for rail transport. Regional distance passengers increased 0.7% for both bus transport and rail transport.

Finally, long distance passengers decreased 2.4% for bus transport and increased 15.7% in rail transport.

**Annual rate of the number of passengers
Inter-city transport by type of transport and distance**



Special and unscheduled transport

More than 51.5 million passengers used special and unscheduled transport in October, indicating a decrease of 2.7% in the annual rate.

The number of special transport passengers decreased 5.0%, reaching more than 36.6 million users. Within this, school transport decreased 4.2%, and work transport did so by 7.7%.

In turn, unscheduled transport increased 3.6%, as compared with the same month of the previous year, reaching more than 14.9 million passengers.

Passenger Transport Statistics

October 2014

Provisional data

1. Passenger transport

	Passengers transported (thousands)	% variation	
		Annual	Year-to-date average
BY TYPE OF TRANSPORT	433,274	0.5	-0.3
City transport	262,484	1.1	0.4
Inter-city transport	119,207	0.6	-0.7
Special and unscheduled transport	51,584	-2.7	-2.6

2. City transport

	Passengers transported (thousands)	% variation	
		Annual	Year-to-date average
CITY TRANSPORT	262,484	1.1	0.4
Metropolitan	104,800	2.4	0.8
Bus ⁽¹⁾	157,684	0.3	0.1

⁽¹⁾ This includes trams and funiculars

2.1 City transport in cities with a Metropolitan

		Passengers transported (thousands)	% variation	
			Annual	Year-to-date average
Barcelona	City bus	18,621	0.2	1.1
	Metropolitan	35,455	2.7	1.3
Bilbao	City bus	3,389	3.4	4.2
	Metropolitan	8,217	4.7	0.0
Madrid	City bus	39,054	-1.7	-0.3
	Metropolitan	54,028	2.2	0.5
Palma	City bus	3,608	2.5	1.9
	Metropolitan	152	0.3	0.3
Sevilla	City bus	7,344	-1.7	3.0
	Metropolitan	1,375	0.6	3.6
Valencia	City bus	(1)	(1)	(1)
	Metropolitan	5,573	0.6	0.0

(1) Publication thereof is not allowed

2.2 City bus transport

	Passengers transported (thousands)	% variation	
		Annual	Year-to-date average
NATIONAL	157,684	0.3	0.1
Andalucía	20,561	0.3	0.2
Aragón	12,331	6.1	0.0
Asturias, Principado de	2,945	-5.7	-1.9
Canarias	5,060	2.0	1.9
Castilla y León	6,074	-3.4	-1.8
Castilla - La Mancha	1,875	0.4	-2.3
Cataluña	26,180	1.3	1.3
Comunitat Valenciana	12,352	1.6	1.7
Extremadura	1,101	-4.7	-2.4
Galicia	5,839	1.2	-0.1
Madrid, Comunidad de	43,788	-2.2	-1.0
Murcia, Región de	1,858	2.5	3.0
País Vasco	7,648	4.4	3.2
Rest of AACC ⁽¹⁾	10,072	-0.1	-0.9

⁽¹⁾ In order to protect statistical secrecy, the passengers of the Autonomous Communities of Illes Balears, Cantabria, Comunidad Foral de Navarra and La Rioja and of the Autonomous Cities of Ceuta and Melilla have been grouped

3. Inter-city transport

	Passengers transported (thousands)	% variation	
		Annual	Year-to-date average
INTER-CITY TRANSPORT	119,207	0.6	-0.7
Road	59,546	-2.2	-2.0
Local	40,936	-2.8	-2.7
Regional	17,244	-0.7	-0.2
Long-distance	1,365	-2.4	-3.9
Rail ⁽¹⁾	56,537	3.6	0.9
Local rail	51,107	3.2	0.5
Regional rail	2,814	-0.7	-3.4
Long-distance rail	2,616	15.7	14.7
Air (domestic)	2,524	5.4	1.9
Sea (cabotage) ⁽²⁾	600	-9.5	-8.3

⁽¹⁾ Local and regional rail include all rail operators and Long-distance rail only includes RENFE

⁽²⁾ Estimated data

4. Special and unscheduled transport

	Passengers transported (thousands)	% variation	
		Annual	Year-to-date average
SPECIAL AND UNSCHEDULED TRANSPORT	51,584	-2.7	-2.6
Special	36,672	-5.0	-5.7
School	28,336	-4.2	-5.6
Work	8,336	-7.7	-6.0
Unscheduled	14,912	3.6	4.0

For further information see INEbase - www.ine.es/en/ All press releases at: www.ine.es/prensa/prensa_en.htm

Press Office: Telephone numbers: 91 583 93 63 / 94 08 – Fax: 91 583 90 87 - gprensa@ine.es

Information Area: Telephone number: 91 583 91 00 – Fax: 91 583 91 58 – www.ine.es/infoine