

14 December 2015

**Passenger Transport Statistics (PT)**

October 2015. *Provisional data*

**The number of passengers using public transport decreases by 1.9% in October, as compared with the same month of the previous year**

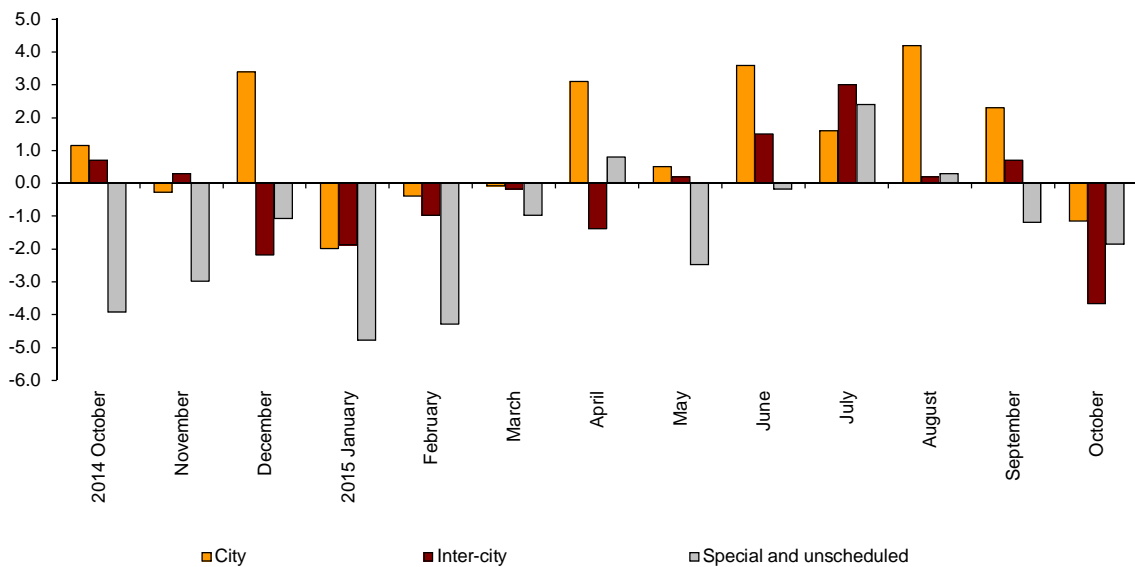
**City transport decreases by 1.2% in the annual rate and inter-city transport does so by 3.7%**

**Passengers transport evolution**

More than 424.4 million passengers used public transport in October, 1.9% less than in the same month of 2014.

City transport decreased by 1.2% in the annual rate and inter-city transport did so by 3.7%. Within the last one, rail transport was the one that recorded the greatest decrease, with a -6.5% rate.

**Annual evolution of passengers transport**  
Type of transport



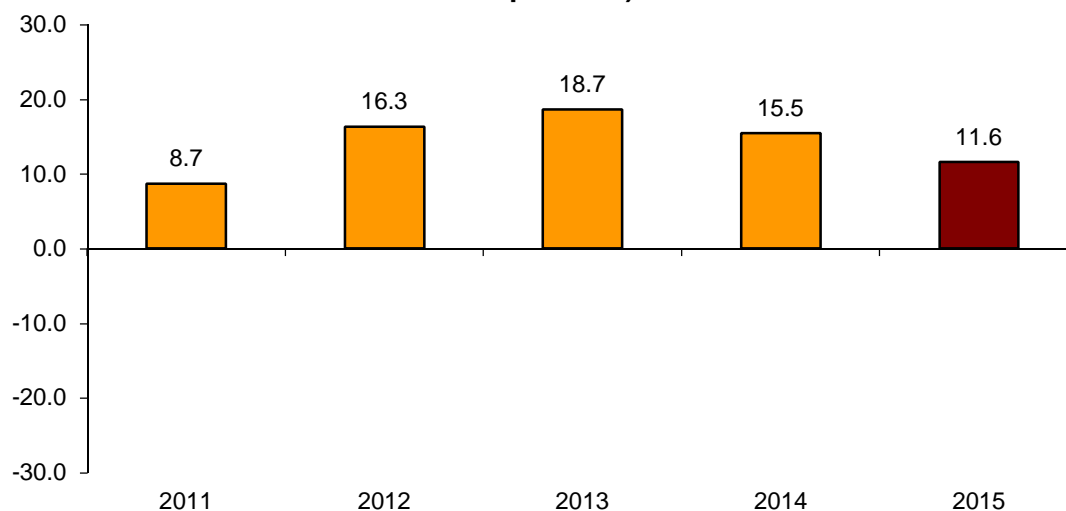
## Passengers transport annual evolution, by type of transport

	City	Inter-city	Special and unschedule
2014 October	1.2	0.7	-3.9
November	-0.3	0.3	-3.0
December	3.4	-2.2	-1.1
2015 January	-2.0	-1.9	-4.8
February	-0.4	-1.0	-4.3
March	-0.1	-0.2	-1.0
April	3.1	-1.4	0.8
May	0.5	0.2	-2.5
June	3.6	1.5	-0.2
July	1.6	3.0	2.4
August	4.2	0.2	0.3
September	2.3	0.7	-1.2
October	-1.2	-3.7	-1.9

## Monthly rate evolution

The variation rate for the number of passengers on public transport in October 2015, as compared with September, was 11.6%. In order to contribute to the analysis and interpretation of data, the evolution of the monthly rate of public transport passengers in the last years is shown in the following chart.

**Evolution of the monthly rate  
(month-on-month variation for October as compared with  
September)**



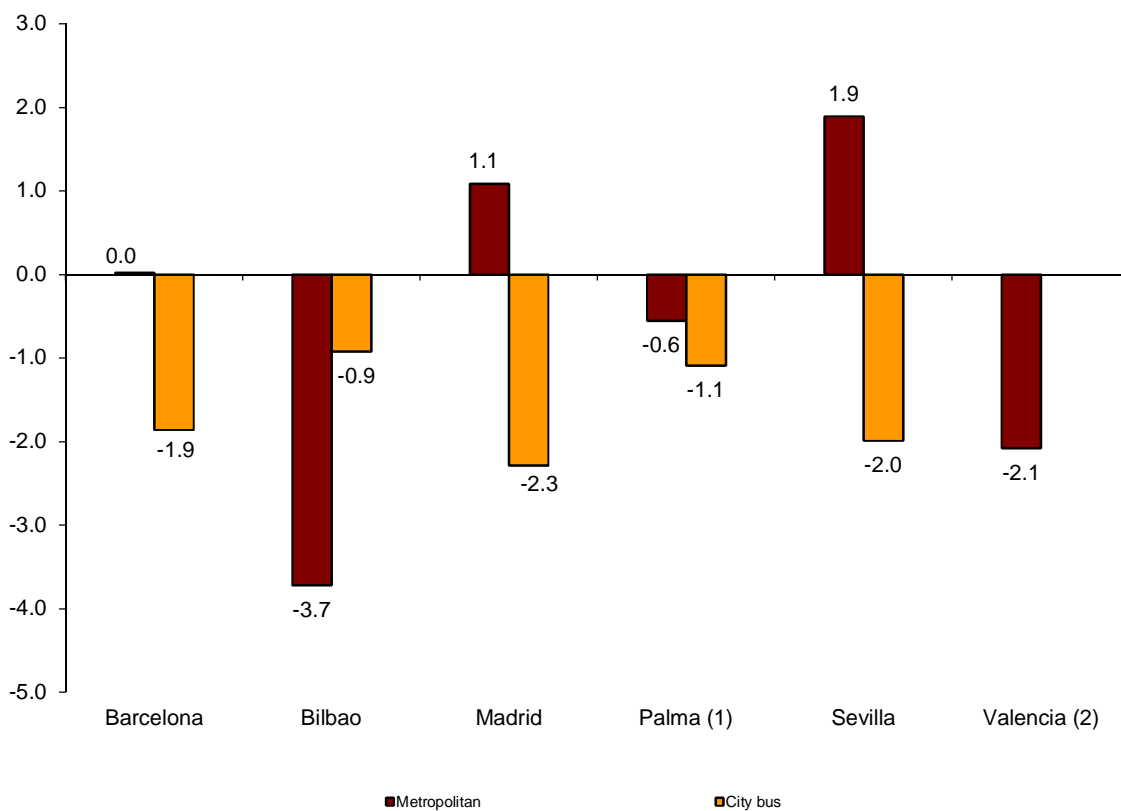
### City transport

City transport was used by more than 259.4 million passengers in October, 1.2% less than in the same month of 2014.

Metropolitan transport registered an increase of 0.2%, while bus transport decreased by 2.1%.

Metropolitan transport decreased in all cities, except in Madrid and Sevilla, where it increased 1.1% and 1.9% respectively. In turn, bus transport decreased in all cities.

**Annual rate of city transport passengers in cities with a Metropolitan**

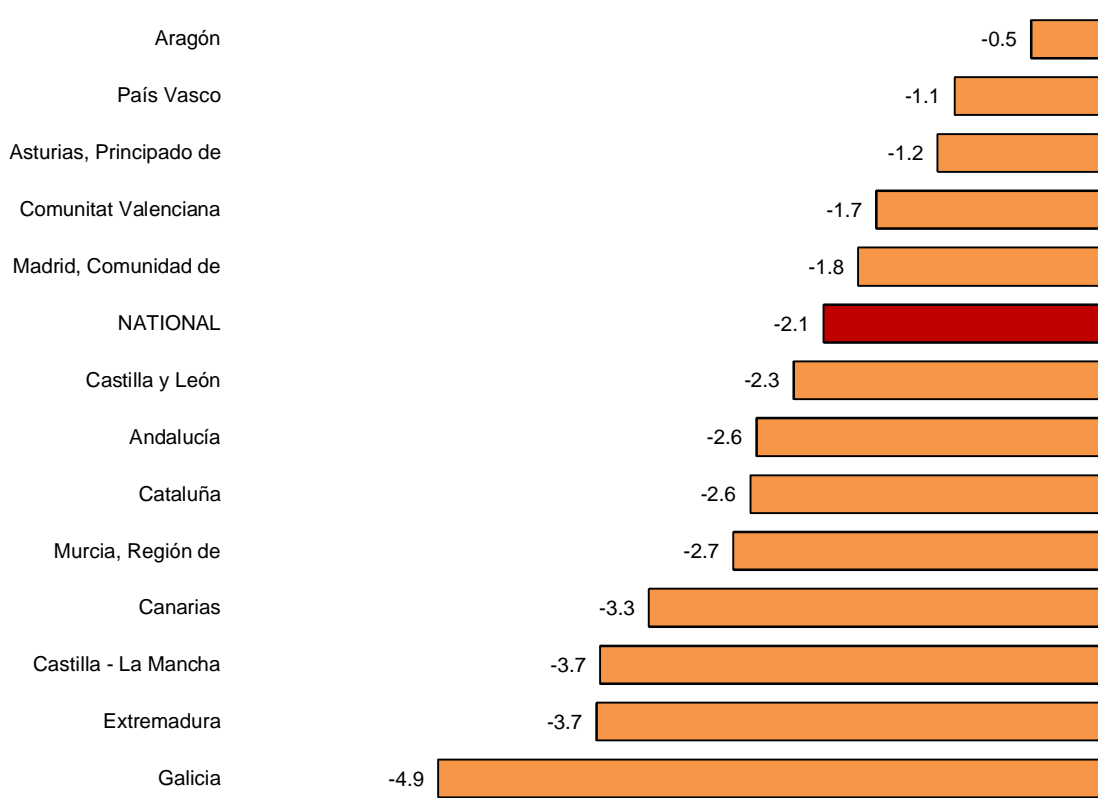


(1) Estimated metropolitan transport data

(2) The publication of the city transport by bus in Valencia is not allowed

The number of passengers of bus transport decreased in all Autonomous Communities. The greatest decrease was recorded in Galicia (-4.9%).

**Annual rates of the number of passengers  
City transport by bus**



(1) In order to protect statistical secrecy, data of the Autonomous Communities of Illes Balears, Cantabria, Comunidad Foral de Navarra and La Rioja and of the Autonomous Cities of Ceuta and Melilla are not published

### Inter-city transport

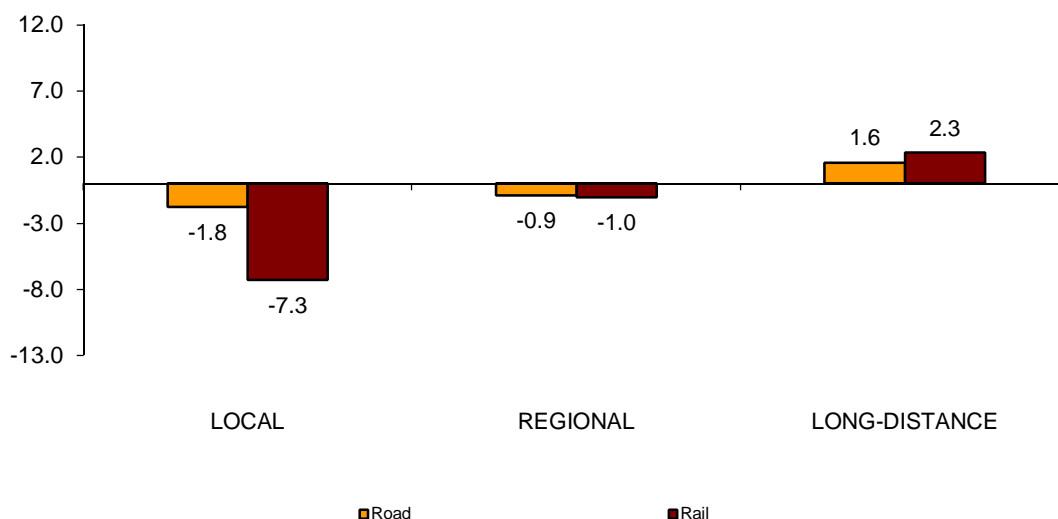
More than 114.9 million passengers used inter-city transport in October, indicating a 3.7% decrease as compared with the same month of 2014.

Bus transport decreased 1.5% and rail transport did so by 6.5%. In turn, air transport increased by 6.1% and sea transport increased by 1.9%.

Local distance passengers decreased by 1.8% for bus transport and by 7.3% for rail transport. Regional distance passengers decreased 0.9% for bus transport and 1.0% for rail transport.

Finally, long distance passengers increased 1.6% for bus transport and 2.3% for rail transport.

**Annual rate of the number of passengers  
Inter-city transport by type of transport and distance**



### Special and unscheduled transport

More than 49.9 million passengers used special and unscheduled transport in October, indicating a decrease of 1.9% in the annual rate.

The number of special transport passengers decreased 6.0%, reaching more than 33.8 million users. Within this, school transport decreased 5.5%, while work transport did so by 7.7%.

In turn, unscheduled transport increased 8.3%, as compared with the same month of 2014, reaching more than 16.0 million passengers.

## Passenger Transport Statistics

October 2015

Provisional data

### 1. Passenger transport

	Passengers transported (thousands)	% variation	
		Annual	Year-to-date average
BY TYPE OF TRANSPORT	424,430	-1.9	0.4
City transport	259,498	-1.2	1.0
Inter-city transport	114,978	-3.7	-0.3
Special and unscheduled transport	49,954	-1.9	-1.5

### 2. City transport

	Passengers transported (thousands)	% variation	
		Annual	Year-to-date average
CITY TRANSPORT	259,498	-1.2	1.0
Metropolitan	104,994	0.2	1.4
Bus <sup>(1)</sup>	154,505	-2.1	0.8

<sup>(1)</sup> This includes trams and funiculars

## 2.1 City transport in cities with a Metropolitan

		Passengers transported (thousands)	% variation	
			Annual	Year-to-date average
Barcelona	City bus	18,274	-1.9	0.8
	Metropolitan	35,462	0.0	2.4
Bilbao	City bus	3,357	-0.9	1.1
	Metropolitan	7,911	-3.7	0.0
Madrid	City bus	38,160	-2.3	-0.1
	Metropolitan	54,612	1.1	1.0
Palma	City bus	3,569	-1.1	2.5
	Metropolitan <sup>(1)</sup>	152	-0.6	0.5
Sevilla	City bus	7,198	-2.0	0.7
	Metropolitan	1,401	1.9	3.0
Valencia	City bus	<sup>(2)</sup>	<sup>(2)</sup>	<sup>(2)</sup>
	Metropolitan	5,457	-2.1	-0.2

<sup>(1)</sup> Estimated data

<sup>(2)</sup> Publication thereof is not allowed

## 2.2 Urban transport by bus by Autonomous City and Community

	Passengers transported (thousands)	% variation	
		Annual	Year-to-date average
NATIONAL	154,505	-2.1	0.8
Andalucía	20,048	-2.6	2.4
Aragón	12,264	-0.5	1.1
Asturias, Principado de	2,918	-1.2	-1.7
Balears, Illes	<sup>(1)</sup>	<sup>(1)</sup>	<sup>(1)</sup>
Canarias	4,883	-3.3	1.9
Cantabria	<sup>(1)</sup>	<sup>(1)</sup>	<sup>(1)</sup>
Castilla y León	5,935	-2.3	-0.6
Castilla - La Mancha	1,805	-3.7	-1.4
Cataluña	25,579	-2.6	1.0
Comunitat Valenciana	12,145	-1.7	0.8
Extremadura	1,060	-3.7	-2.3
Galicia	5,554	-4.9	-0.2
Madrid, Comunidad de	42,976	-1.8	0.0
Murcia, Región de	1,807	-2.7	1.0
Navarra, Comunidad Foral de	<sup>(1)</sup>	<sup>(1)</sup>	<sup>(1)</sup>
País Vasco	7,563	-1.1	1.1
Rioja, La	<sup>(1)</sup>	<sup>(1)</sup>	<sup>(1)</sup>
Ceuta	<sup>(1)</sup>	<sup>(1)</sup>	<sup>(1)</sup>
Melilla	<sup>(1)</sup>	<sup>(1)</sup>	<sup>(1)</sup>

### 3. Inter-city transport

	Passengers transported (thousands)	% variation	
		Annual	Year-to-date average
INTER-CITY TRANSPORT	114,978	-3.7	-0.3
Road	58,840	-1.5	-0.8
Local	40,302	-1.8	-1.0
Regional	17,151	-0.9	-0.5
Long-distance	1,387	1.6	0.4
Rail <sup>(1)</sup>	52,843	-6.5	-0.1
Local rail	47,382	-7.3	-0.4
Regional rail	2,785	-1.0	1.0
Long-distance rail	2,676	2.3	5.1
Air (domestic)	2,677	6.1	5.8
Sea (cabotage)	617	1.9	5.1

<sup>(1)</sup> Local and regional rail include all rail operators and Long-distance rail only includes RENFE

### 4. Special and unscheduled transport

	Passengers transported (thousands)	% variation	
		Annual	Year-to-date average
SPECIAL AND UNSCHEDULED TRANSPORT	49,954	-1.9	-1.5
Special	33,894	-6.0	-4.3
School	26,300	-5.5	-4.5
Work	7,594	-7.7	-3.7
Unscheduled	16,060	8.3	3.7

For further information see INEbase - [www.ine.es/en/](http://www.ine.es/en/) All press releases at: [www.ine.es/prensa/prensa\\_en.htm](http://www.ine.es/prensa/prensa_en.htm)

**Press Office:** Telephone numbers: 91 583 93 63 / 94 08 – Fax: 91 583 90 87 - [gprensa@ine.es](mailto:gprensa@ine.es)

**Information Area:** Telephone number: 91 583 91 00 – Fax: 91 583 91 58 – [www.ine.es/infoine](http://www.ine.es/infoine)