

Passenger Transport Statistics (PT)
December 2014 and year 2014. *Provisional data*

The number of passengers using public transport increases by 1.3% in December, as compared with the same month of the previous year

City transport increases by 3.4% in the annual rate and inter-city transport decreases by 2.4%

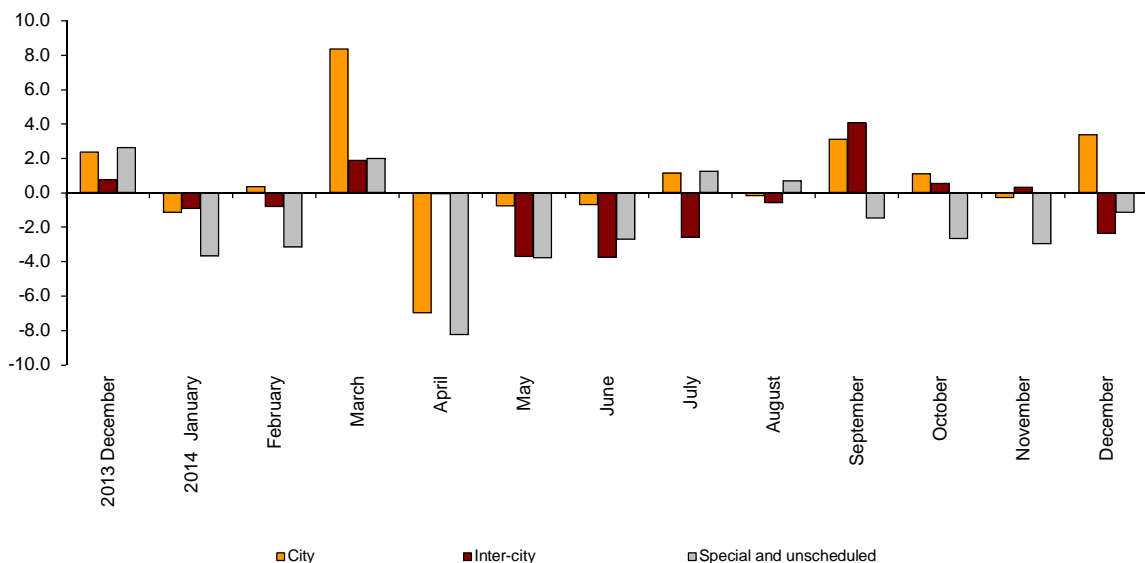
In 2014 as a whole, the number of passengers using public transport decreases by 0.2%: city transport increases by 0.6% and inter-city transport decreases by 0.7%

Passengers transport evolution

More than 365.7 million passengers used public transport in December, 1.3% less than in the same month of 2013.

City transport increased by 3.4% and inter-city transport decreased by 2.4% in the annual rate. Within the last one, rail transport was the one that recorded the greatest decrease, with a – 4.0% rate.

Annual evolution of passengers transport
Type of transport



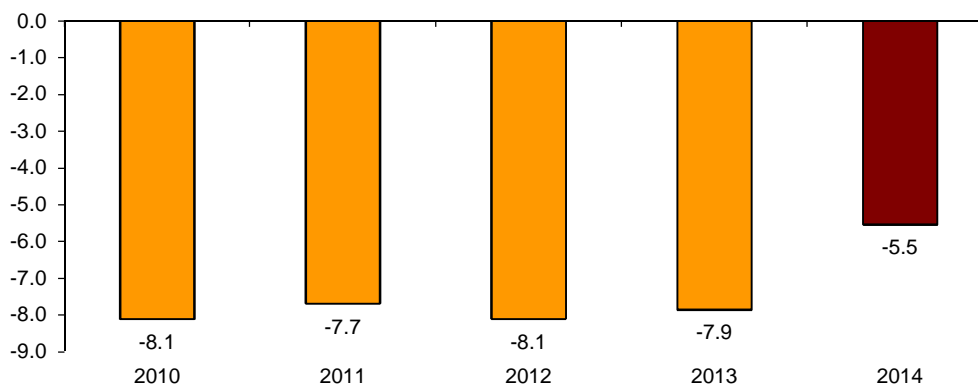
Passengers transport annual evolution, by type of transport

	City	Inter-city	Special and unschedule
2013 December	2.4	0.8	2.6
2014 January	-1.2	-0.9	-3.7
February	0.4	-0.8	-3.2
March	8.4	1.9	2.0
April	-7.0	-0.1	-8.3
May	-0.8	-3.7	-3.8
June	-0.7	-3.8	-2.7
July	1.1	-2.6	1.3
August	-0.2	-0.6	0.7
September	3.1	4.1	-1.5
October	1.1	0.6	-2.7
November	-0.3	0.3	-3.0
December	3.4	-2.4	-1.1

Monthly rate evolution¹

The variation rate for the number of passengers on public transport in December 2014, as compared with November, was -5.5%.

**Evolution of the monthly rate
(month-on-month variation for December as compared with November)**



¹ In order to contribute to the analysis and interpretation of data, the evolution of the monthly rate of public transport passengers in the last years has been included in this rubric. This type of series' monthly rates might have certain seasonal behavior, therefore it is advisable to value them regarding the data of the same month of previous years.

City transport

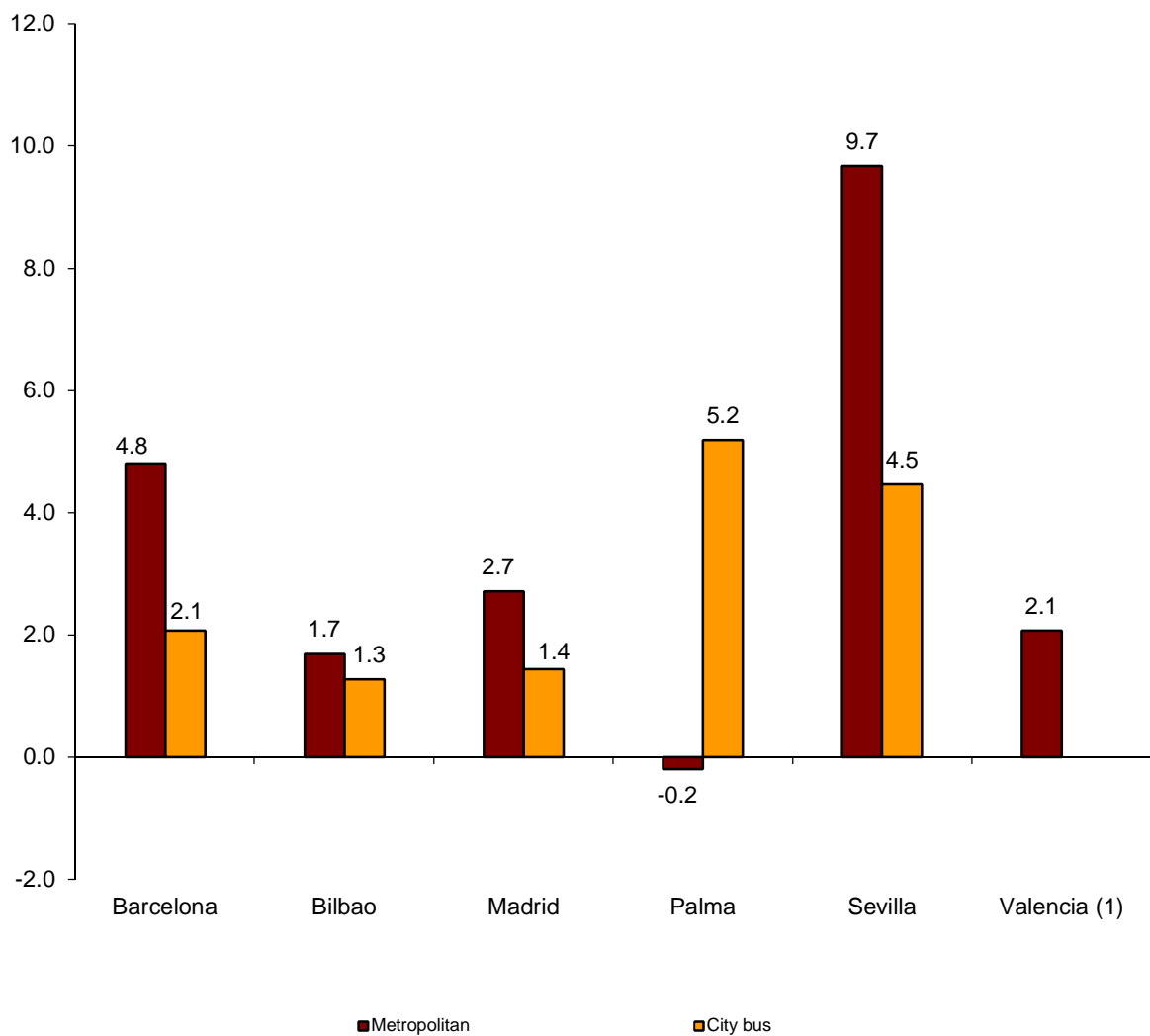
City transport was used by more than 232.8 million passengers in December, 3.4% more than in the same month of 2013.

Metropolitan transport registered an increase of 3.4% and bus transport increased by 3.4%.

Metropolitan transport increased in all cities except for Palma, which registered a -0.2% rate.

Bus transport registered positive annual rates in all the cities using metropolitan transport.

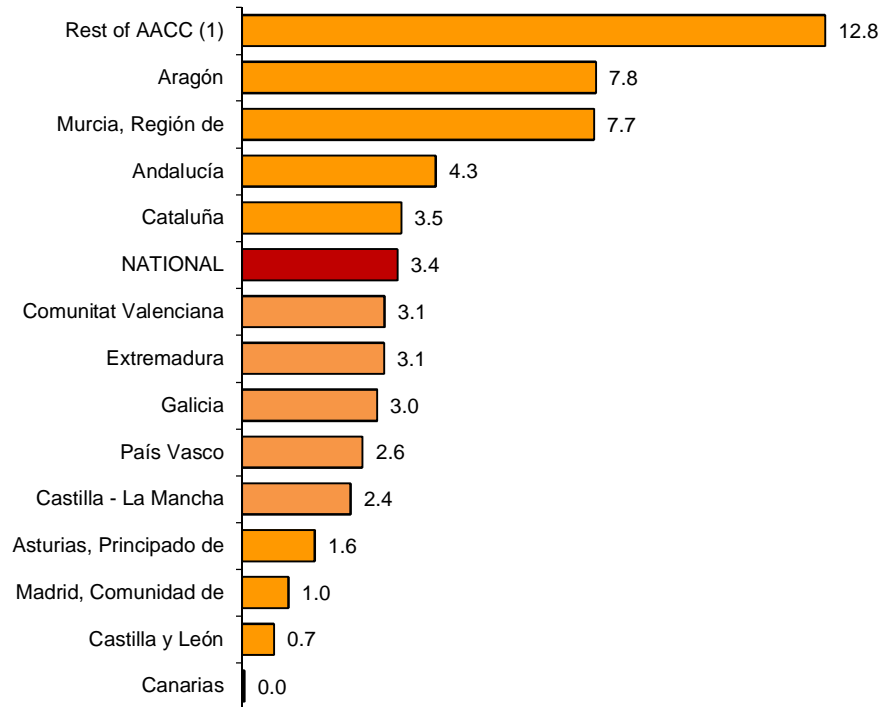
Annual rate of city transport passengers in cities with a Metropolitan



⁽¹⁾ The publication of the city transport by bus in Valencia is not allowed

The number of passengers of bus transport increased in all Autonomous Communities as compared to December 2013. Aragón (7.8%) and Región de Murcia (7.7%) were those that registered the greatest increases.

Annual rates of the number of passengers City transport by bus



⁽¹⁾ In order to protect statistical secrecy, the passengers of the Autonomous Communities of Illes Balears, Cantabria, Comunidad Foral de Navarra and La Rioja and of the Autonomous Cities of Ceuta and Melilla have been grouped

Inter-city transport

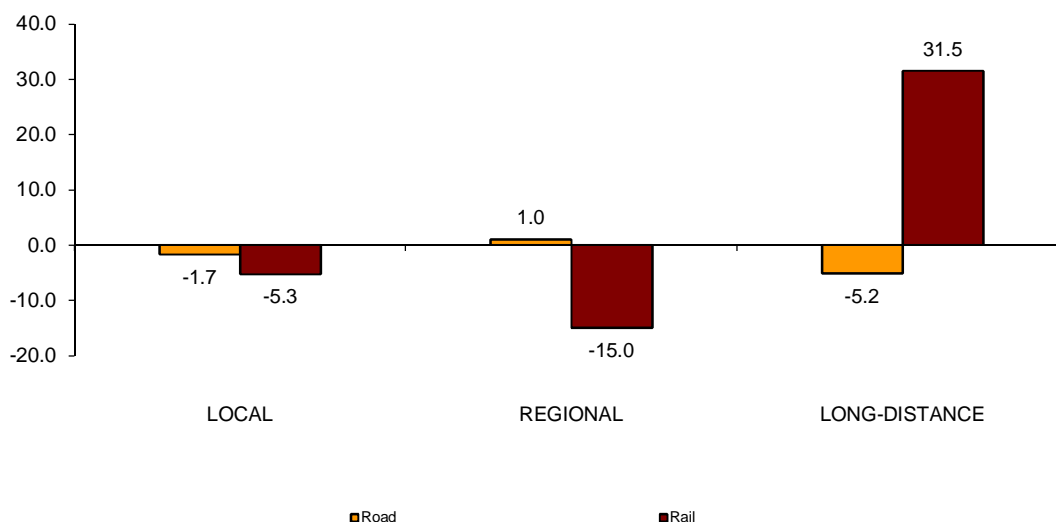
More than 97.9 million passengers used inter-city transport in December, indicating a 2.4% decrease as compared with the same month of 2013.

Air transport registered an increase (3.1%), while rail transport (-4.0%) and bus transport (-1.0%) decreased.

Local distance passengers dropped by 1.7% for bus transport and 5.3% for rail transport. Regional distance passengers increased 1.0% for bus transport and decreased 15.0% for rail transport.

Finally, long distance passengers decreased 5.2% for bus transport and increased 31.5% for rail transport.

**Annual rate of the number of passengers
Inter-city transport by type of transport and distance**



Special and unscheduled transport

More than 34.9 million passengers used special and unscheduled transport in December, indicating a decrease of 1.1% in the annual rate.

The number of special transport passengers decreased 2.7%, reaching more than 25.0 million users. Within this, school transport decreased 2.1%, and work transport did so by 4.3%.

In turn, unscheduled transport increased 3.0%, as compared with the same month of the previous year, reaching more than 9.9 million passengers.

Passenger transport for 2014 as a whole

The number of passengers using public transport in 2014 as a whole exceeded 4,479.7 million, indicating a 0.2% decrease as compared to 2013.

City transport increased by 0.6%, while inter-city transport decreased by 0.7%. Among city transport, metropolitan transport registered a 0.9% increase and bus transport a 0.3% increase.

Within inter-city transport, sea transport decreased by 8.8% and bus transport by 1.9%. In turn, rail transport increased by 0.6% and air transport did so by 2.0%.

Special and unscheduled transport decreased by 2.5%, reaching over 490.7 million passengers in 2014. Special transport registered a 5.4% decrease, while unscheduled transport increased by 3.8%.

Passenger transport . Year 2014

	Passengers transported (thousands)	% variation Year 2014
BY TYPE OF TRANSPORT	4,479,776	-0.2
City transport	2,730,815	0.6
Metropolitan	1,099,701	0.9
Bus	1,631,114	0.3
Inter-city transport	1,258,186	-0.7
Road	651,387	-1.9
Rail	569,343	0.6
Air (domestic)	29,267	2.0
Sea (cabotage)	8,189	-8.8
Special and unscheduled transport	490,775	-2.5
Special	328,541	-5.4
Unscheduled	162,233	3.8

Passenger Transport Statistics

December 2014

Provisional data

1. Passenger transport

	Passengers transported (thousands)	% variation	
		Annual	Year 2014
BY TYPE OF TRANSPORT	365,781	1.3	-0.2
City transport	232,837	3.4	0.6
Inter-city transport	97,961	-2.4	-0.7
Special and unscheduled transport	34,982	-1.1	-2.5

2. City transport

	Passengers transported (thousands)	% variation	
		Annual	Year 2014
CITY TRANSPORT	232,837	3.4	0.6
Metropolitan	95,648	3.4	0.9
Bus ⁽¹⁾	137,189	3.4	0.3

⁽¹⁾ This includes trams and funiculars

2.1 City transport in cities with a Metropolitan

		Passengers transported (thousands)	% variation	
			Annual	Year 2014
Barcelona	City bus	15,395	2.1	0.9
	Metropolitan	31,548	4.8	1.6
Bilbao	City bus	3,259	1.3	3.5
	Metropolitan	7,880	1.7	0.3
Madrid	City bus	34,201	1.4	-0.2
	Metropolitan	49,749	2.7	0.5
Palma	City bus	2,731	5.2	2.1
	Metropolitan	92	-0.2	0.2
Sevilla	City bus	6,877	4.5	2.9
	Metropolitan	1,448	9.7	4.1
Valencia	City bus	(1)	(1)	(1)
	Metropolitan	4,932	2.1	0.4

(1) Publication thereof is not allowed

2.2 City bus transport

	Passengers transported (thousands)	% variation	
		Annual	Year 2014
NATIONAL	137,189	3.4	0.3
Andalucía	18,404	4.3	0.6
Aragón	10,645	7.8	0.9
Asturias, Principado de	2,708	1.6	-1.8
Canarias	4,347	0.0	1.6
Castilla y León	5,503	0.7	-1.6
Castilla - La Mancha	1,582	2.4	-1.6
Cataluña	21,525	3.5	1.4
Comunitat Valenciana	11,005	3.1	1.7
Extremadura	884	3.1	-2.1
Galicia	4,965	3.0	0.0
Madrid, Comunidad de	38,231	1.0	-0.9
Murcia, Región de	1,468	7.7	3.0
País Vasco	7,271	2.6	2.9
Rest of AACC ⁽¹⁾	8,651	12.8	0.2

⁽¹⁾ In order to protect statistical secrecy, the passengers of the Autonomous Communities of Illes Balears, Cantabria, Comunidad Foral de Navarra and La Rioja and of the Autonomous Cities of Ceuta and Melilla have been grouped

3. Inter-city transport

	Passengers transported (thousands)	% variation	
		Annual	Year 2014
INTER-CITY TRANSPORT	97,961	-2.4	-0.7
Road	50,129	-1.0	-1.9
Local	33,867	-1.7	-2.6
Regional	14,981	1.0	0.0
Long-distance	1,281	-5.2	-3.7
Rail ⁽¹⁾	45,173	-4.0	0.6
Local rail	40,339	-5.3	0.1
Regional rail	1,869	-15.0	-3.3
Long-distance rail	2,965	31.5	15.9
Air (domestic)	2,155	3.1	2.0
Sea (cabotage) ⁽²⁾	504	-9.2	-8.1

⁽¹⁾ Local and regional rail include all rail operators and Long-distance rail only includes RENFE

⁽²⁾ Estimated data

4. Special and unscheduled transport

	Passengers transported (thousands)	% variation	
		Annual	Year 2014
SPECIAL AND UNSCHEDULED TRANSPORT	34,982	-1.1	-2.5
Special	25,036	-2.7	-5.4
School	18,174	-2.1	-5.2
Work	6,862	-4.3	-5.9
Unscheduled	9,946	3.0	3.8

For further information see INEbase - www.ine.es/en/ All press releases at: www.ine.es/prensa/prensa_en.htm

Press Office: Telephone numbers: 91 583 93 63 / 94 08 – Fax: 91 583 90 87 - gprensa@ine.es

Information Area: Telephone number: 91 583 91 00 – Fax: 91 583 91 58 – www.ine.es/infoine