

11 February 2019

Passenger Transport Statistics (PT)
December 2018 and year 2018. Provisional data

The number of passengers using public transport increased by 5.4% in December, compared to the same month of 2017

City transport increased by 5.4% in its annual rate and inter-city transport did so by 5.2%

In 2018 as a whole, the number of passengers using public transport increased by 3.1%

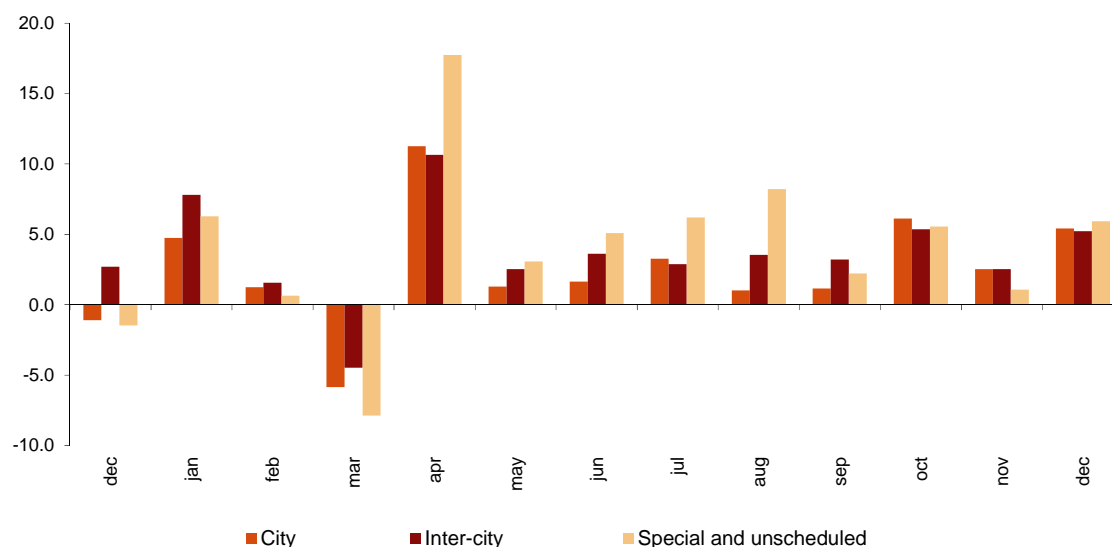
Evolution of passenger transport

Over 398.2 million passengers used public transport in December, 5.4% more than in the same month of 2017.

City transport increased by 5.4% in the annual rate and inter-city transport did so by 5.2%. Within the latter, it is worth noting the 7.3% increase in air transport.

Passenger transport. Type of transport. December 2018.

Annual rate. Percentage



Annual evolution of passenger transport by type of transport

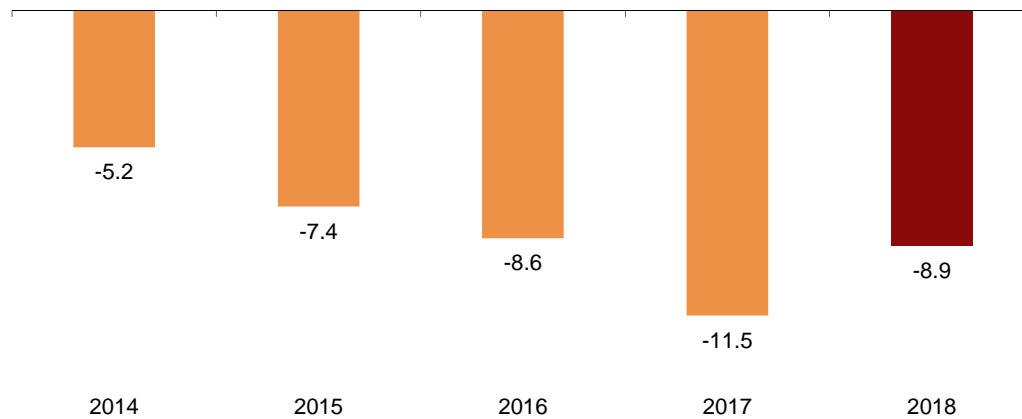
	City	Inter-city	Special and unscheduled
2017 December	-1.1	2.7	-1.5
2018 January	4.7	7.8	6.3
February	1.3	1.6	0.6
March	-5.9	-4.5	-7.9
April	11.3	10.6	17.7
May	1.3	2.5	3.1
June	1.6	3.6	5.1
July	3.3	2.9	6.2
August	1.0	3.5	8.2
September	1.1	3.2	2.2
October	6.1	5.4	5.5
November	2.5	2.5	1.1
December	5.4	5.2	5.9

Evolution of the monthly rate

The variation rate of the number of public transport passengers in December, as compared with November, was -8.9%. To allow for data analysis and interpretation, the evolution of the monthly rate of public transport passengers in recent years is shown in the following graph.

Evolution of the monthly rate of public transport passengers

Monthly variation of December compared to November of the same year



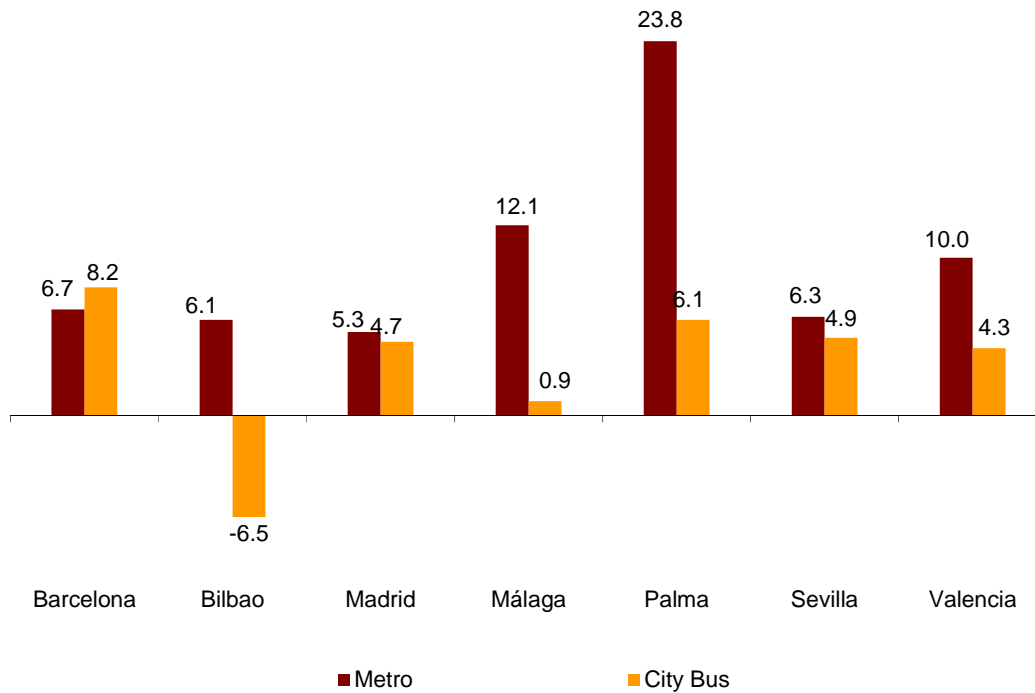
City transport

City transport was used by over 250.8 million passengers in December, 5.4% more than in the same month of 2017.

Subway transport registered an increase of 6.1% in the annual rate. Palma's subway presented the largest increase of 23.8%.

Among the cities with subways, the greatest increase in bus transport was registered in Palma (8.4%), while the only decrease was registered in Bilbao (-6.5%).

City transport passengers in cities with a subway. December 2018. Annual rate
Percentage



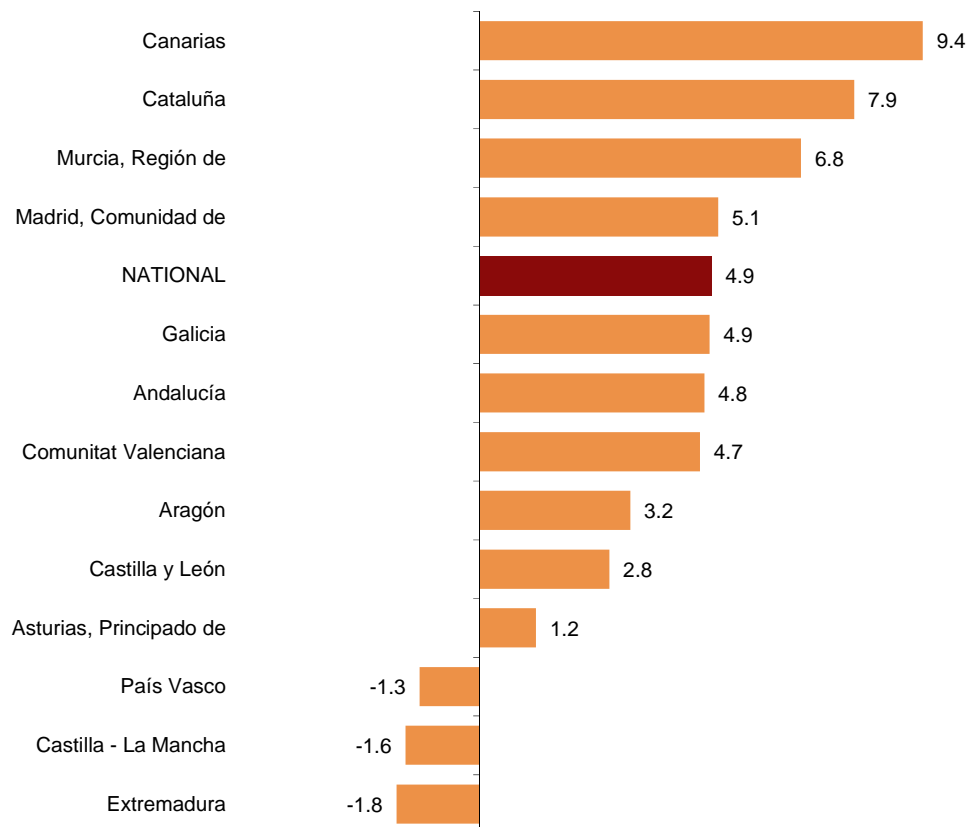
City transport by bus increased by 4.9% in December, as compared with the same month of 2017.

The number of bus transport passengers registered the greatest increases in Canarias (9.4%), Cataluña (7.9%) and Región de Murcia (6.8%).

Conversely, the number of bus transport passengers decreased in Extremadura (-1.8%), Castilla–La Mancha (-1.6%) and País Vasco (-1.3%).

City transport by bus. December 2018.

Annual rate. Percentage



¹ In order to maintain the statistical secrecy, data of the Autonomous Communities of Illes Balears, Cantabria, Comunidad Foral de Navarra and La Rioja and the Autonomous Cities of Ceuta and Melilla are not separately published.

Inter-city transport

Over 111.1 million passengers used inter-city transport in December, representing a 5.2% increase as compared with the same month of 2017.

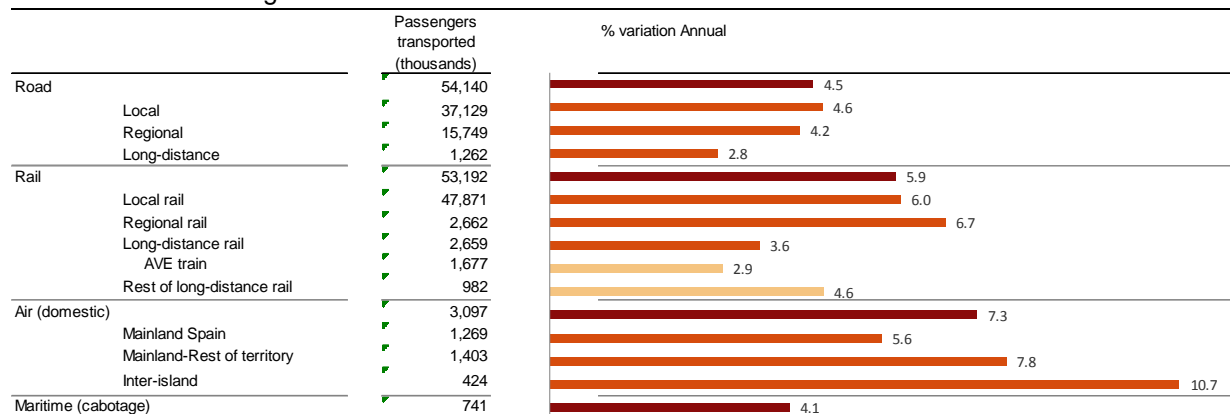
By type of transport, air transport increased by 7.3%, rail transport by 5.9% and bus transport by 4.5%.

Local distance passengers increased by 4.6% for bus transport and by 6.0% for rail transport. Regional distance passengers increased by 4.2% for bus transport and 6.7% for rail transport.

Finally, long distance passengers increased by 2.8% for bus transport and by 3.6% for rail transport. Within the last one, AVE (high speed railway) increased by 2.9%.

Inter-city transport by type of transport and distance. December 2018.

Annual rate. Percentage



Special and unscheduled transport

Over 36.1 million passengers used special and unscheduled transport in December, indicating a 5.9% increase in the annual rate.

The number of special transport passengers increased by 6.4%, and exceeded 23.9 million users. Within this, school transport increased by 8.5%, while work transport showed no change.

In turn, unscheduled transport increased 5.0%, as compared with the same month of 2017, reaching more than 12.2 million passengers.

Results for the whole of the year 2018

In the whole of 2018, the number of travellers that used public transport exceeded 4,905.7 million, which represents an increase of 3.1% compared to 2017.

City transport increased by 2.7% and inter-city transport did so by 3.6%.

Within urban transport, metro transport grew by 4.6% and bus transport by 1.5%.

The number of passengers using inter-city air transport increased by 10.0%, railway by 4.4%, maritime transport by 3.1% and bus by 2.6%.

Special and unscheduled transport increased by 4.0% in 2018. Special transport increased by 2.5%, while unscheduled transport increased by 6.4%.

Passenger transport. Year 2018.

Annual rate. Percentage

	Passengers transported (thousands)	% Annual rate
TOTAL	4,905,748	3.1
City transport	3,013,687	2.7
Metro	1,246,084	4.6
City bus	1,767,603	1.5
Inter-city transport	1,372,588	3.6
Road	694953.4	2.6
Local	480,165	3.0
Regional	199,263	2.0
Long-distance	15,525	-4.0
Rail	626294.9	4.4
Local rail	559,783	4.5
Regional rail	32,872	3.1
Long-distance rail	33,635	4.1
AVE train	21,331	3.8
Rest of long-distance rail	12,304	4.6
Air (domestic)	40274.3	10.0
Mainland Spain	16,132	7.1
Mainland-Rest of territory	18,795	9.2
Inter-island	5,348	22.9
Maritime (cabotage)	11,065	3.1
Special and unscheduled transport	519,473	4.0
Special	314,821	2.5
Unscheduled	204,651	6.4

Review and update of data

Coinciding with today's publication, the INE has updated the data of the PT series corresponding to the same month of the previous year. The results are available at INEBase.

Methodological note

The purpose of the **Passenger Transport Statistics** is to provide monthly information regarding the number of passengers transported by city transport (bus and subway), inter-city transport (road, rail, air and sea) and special and unscheduled bus transport.

Bus transport is investigated by means of a sample survey. For rail transport, the number of passengers is calculated using the information provided by railway operators (RENFE and other state companies). The information for air transport is provided by Civil Aviation, and for sea transport, the number of passengers disembarked is compiled using the information from State Ports.

Type of survey: monthly continuous survey.

Population scope: companies involved in passenger transport regardless of their main activity.

Geographical scope: the entire national territory.

Reference period of the results: the month.

Reference period of the information: the month.

Sample size: approximately 1,500 companies.

Type of sampling: stratified random sampling of companies, by Autonomous Community, number of employees and type of transport.

Collection method: completion of the questionnaire by the respondent using one of the following methods: internet (IRIA system), e-mail, fax, telephone or by postal mail.

For more information you can access the methodology at:

http://www.ine.es/dyngs/INEbase/en/operacion.htm?c=Estadistica_C&cid=1254736176906&menu=metodologia&idp=1254735576820

And the standardised methodological report at:

<http://www.ine.es/dynt3/metadatos/en/RespuestaDatos.html?oe=30163>

For further information see **INEbase: www.ine.es/en/** Twitter: **@es_ine**

All press releases at: **www.ine.es/en/prensa/prensa_en.htm**

Press office: Telephone numbers: (+34) 91 583 93 63 /94 08 – **gprensa@ine.es**

Information Area: Telephone number: (+34) 91 583 91 00 – **www.ine.es/infoine/?L=1**

Passenger Transport Statistics

December 2018

Provisional data

1. Passenger transport

	Passengers transported (thousands)	% variation	
		Annual	Year-to-date average
BY TYPE OF TRANSPORT	398,219	5.4	3.1
City transport	250,862	5.4	2.7
Inter-city transport	111,169	5.2	3.6
Special and unscheduled transport	36,187	5.9	4.0

2. City transport

	Passengers transported (thousands)	% variation	
		Annual	Year-to-date average
CITY TRANSPORT	250,862	5.4	2.7
Metro	105,524	6.1	4.6
Bus ¹	145,338	4.9	1.5

¹ Including trams and funiculars

2.1 City transport in major cities with Metro

		Passengers transported (thousands)	% variation	
			Annual	Year-to-date average
Barcelona	City bus	16,895	8.2	2.9
	Metro	32,868	6.7	4.4
Bilbao	City bus	2,905	-6.5	-0.4
	Metro	8,110	6.1	2.0
Madrid	City bus	35,437	4.7	-1.7
	Metro	56,590	5.3	4.9
Málaga	City bus	3,868	0.9	1.7
	Metro	584	12.1	9.7
Palma	City bus	2,928	8.4	2.4
	Metro	80	23.8	21.0
Sevilla	City bus	7,011	4.9	2.0
	Metro	1,632	6.3	5.7
Valencia	City bus	8,100	4.3	1.5
	Metro	5,660	10.0	5.4

2.2 Urban transport by bus by Autonomous Cities and Communities

	Passengers transported (thousands)	% variation	
		Annual	Year-to-date average
NATIONAL	145,338	4.9	1.5
Andalucía	19,710	4.8	3.0
Aragón	10,519	3.2	2.0
Asturias, Principado de	2,578	1.2	1.4
Balears, Illes	.	.	.
Canarias	5,214	9.4	3.5
Cantabria	.	.	.
Castilla y León	5,674	2.8	1.9
Castilla - La Mancha	1,543	-1.6	1.1
Cataluña	23,238	7.9	3.2
Comunitat Valenciana	12,034	4.7	1.8
Extremadura	840	-1.8	-2.6
Galicia	4,988	4.9	2.2
Madrid, Comunidad de	40,575	5.1	-1.1
Murcia, Región de	1,686	6.8	3.7
Navarra, Comunidad Foral de	.	.	.
País Vasco	7,266	-1.3	0.8
Rioja, La	.	.	.
Ceuta	.	.	.

3. Inter-city transport

	Passengers transported (thousands)	% variation	
		Annual	Year-to-date average
INTER-CITY TRANSPORT	111,169	5.2	3.6
Road	54,140	4.5	2.6
Local	37,129	4.6	3.0
Regional	15,749	4.2	2.0
Long-distance	1,262	2.8	-4.0
Rail ¹	53,192	5.9	4.4
Local rail	47,871	6.0	4.5
Regional rail	2,662	6.7	3.1
Long-distance rail	2,659	3.6	4.1
AVE train	1,677	2.9	3.8
Rest of long-distance rail	982	4.6	4.6
Air (domestic)	3,097	7.3	10.0
Mainland Spain	1,269	5.6	7.1
Mainland-Rest of territory	1,403	7.8	9.2
Inter-island	424	10.7	22.9
Maritime (cabotage) ²	741	4.1	3.1

¹ Local rail includes all rail operators and regional and long-distance rail include only RENFE

² Estimated data

4. Special and unscheduled transport

	Passengers transported (thousands)	% variation	
		Annual	Year-to-date average
SPECIAL AND UNSCHEDULED TRANSPORT	36,187	5.9	4.0
Special	23,929	6.4	2.5
School	18,322	8.5	2.4
Work	5,607	0.0	2.8
Unscheduled	12,258	5.0	6.4