

22 January 2014

## Economically Active Population Survey (EAPS)

Fourth quarter of 2014

### Main results

Employment registers an increase of 65,100 persons in this quarter as compared with the previous quarter, reaching a total of 17,569,100 employed persons. The quarterly employment variation rate stands at 0.37% (0.99% for deseasonalised terms). Employment increases by 433,900 in the last 12 months. The annual variation is 2.53%.

Private employment registers an increase of 63,100 persons and public employment records an increase of 2,000 persons. In the last 12 months, employment increases by 415,700 persons in the private sector and by 18,100 in the public sector.

In the fourth quarter, the total number of wage earners with a permanent contract increases by 110,900 persons, while that of wage earners with a temporary contract decreases by 41,000. Within the last year, permanent employment increased by 212,800 and temporary employment did so by 176,900. The number of independent workers or businesspersons decreases by 7,300 this quarter, and increases by 43,400 this year.

This year, employment increases in *Services* (344,200 more employed persons), *Industry* (98,000) and *Construction* (40,000), and it decreases in *Agriculture* (48,400 less). This quarter, it increases in *Agriculture* (62,800 more), *Industry* (11,700) and *Construction* (7,800), and it decreases in *Services* (17,200 less).

By Autonomous Community, the greatest increases in employment are registered in Andalucía (70,800 more employed persons), Comunitat Valenciana (65,300) and Comunidad de Madrid (42,800). The greatest decreases are recorded in Illes Balears (54,200 less employed persons) and Cataluña (26,700). Within the last year almost all Autonomous Communities increase their employment rates. The sharpest increases are registered in Comunidad de Madrid (122,600 more), Andalucía (110,900) and Comunitat Valenciana (61,800).

The number of unemployed persons increases by 30,100 persons this quarter, standing at 5,457,700 persons. The quarterly variation of unemployment is 0.55% (a -1.9% reduction in deseasonalised terms). In the last 12 months, unemployment decreased by 477,900 persons.

The unemployment rate stands at 23.70%, three hundredths over that of the previous quarter. Within the last year, the unemployment rate decreased by more than two percent points, from 25.73 in the last quarter 2013.

By Autonomous Community, the greatest decreases in unemployment as compared to the previous quarter are recorded in Comunitat Valenciana (44,700 less), Andalucía (23,300), and Canarias (20,100). The highest increases are registered in Cataluña (30,500 more), Comunidad de Madrid (28,800) and País Vasco (19,000). The unemployment reduction in annual terms is widespread. Comunitat Valenciana (98,900 less unemployed persons), Cataluña (83,000) and Comunidad de Madrid (73,200) record the greatest decreases.

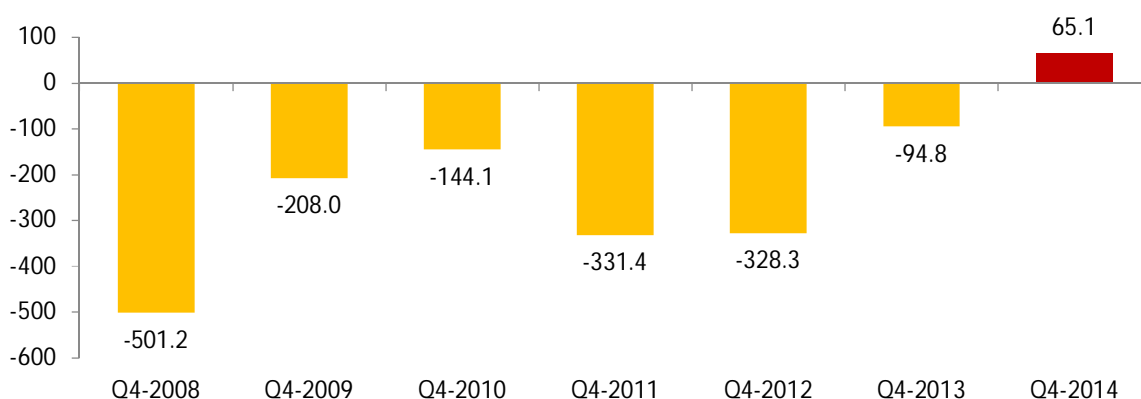
This quarter, the number of economically active persons increases by 95,200, up to 23,026,800. The activity rate increases by 0.25 points up to 59.77%. In the last year, the number of economically active people decreased by 44,000 persons. This is mainly due to the decrease of working age population (16-64 years old), whose essential cause is population ageing.

## Employment

The number of employed persons increased by 65,100 in the fourth quarter of 2014, standing at 17,569,100. The quarterly variation rate of employment stood at 0.37%. This was the third consecutive quarterly increase of employment and the first one in a fourth quarter since 2006.

The employment rate (percentage of employed persons as compared with the population aged 16 years old and over) stood at 45.61%, that is, 17 hundredths higher than in the third quarter. As compared to the same quarter of the previous year, it increased by 1.15 points.

**Quarter-on-quarter employment evolution, in thousands  
(variation of 4Q as compared with Q3 of the same year)**



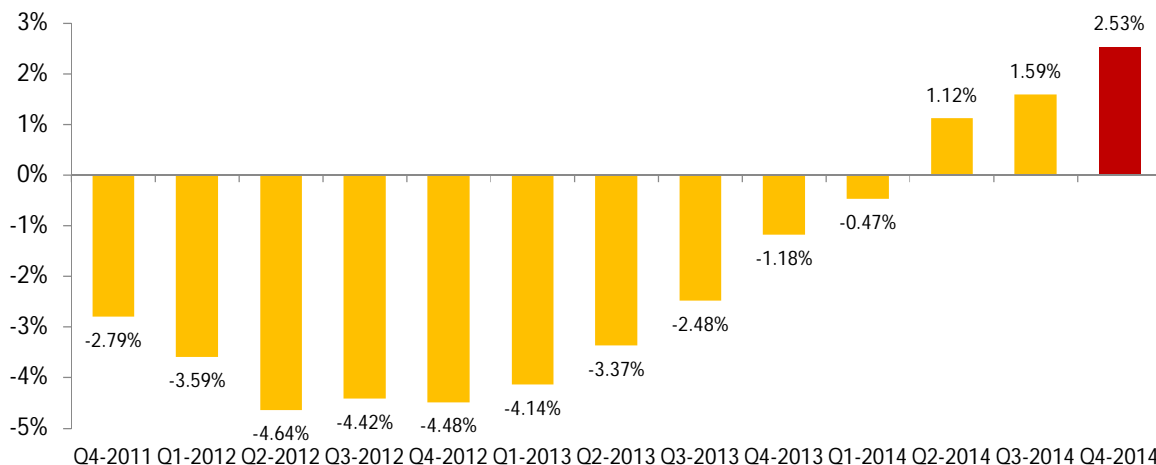
This quarter, employment increased among women (112,700), whereas it decreased among men (47,600).

By nationality, employment increased by 69,700 among Spanish nationals and decreased by 4,700 among foreign nationals.

By age group, the greatest increases in employment were registered among persons aged 35 and over, particularly among the 50-54 years old group (62,400 more persons employed), and those aged 55 years and over (48,400). However, the number of employed persons decreased among persons aged up to 35, particularly in the 25-29 years old group (40,200 less persons employed).

In the last 12 months, employment has increased by 433,900 persons, (251,500 men and 182,400 women). The annual variation rate of employment was 2.53%, that is, 94 hundredths more than in the previous quarter.

## Evolution of the total number of employed persons, annual rate



The number of employed persons increased this quarter in *Agriculture* (62,800 more persons), *Industry* (11,700) and *Construction* (7,800). In turn, it decreased in *Services* (17,200 less employed persons).

In the last year, the employment increased in *Services* (344,200 more employed persons), in *Industry* (98,000) and in *Construction* (40,000). In turn, it decreased in *Agriculture* (48,400 less).

Full-time employment decreased by 130,800 persons this quarter, whilst the number of part-time employed persons increased by 195,900. The percentage of persons working part-time increased more than one point, reaching 16.05%.

In the last twelve months, full-time employment increased by 367,400 and part-time employment did so by 66,500.

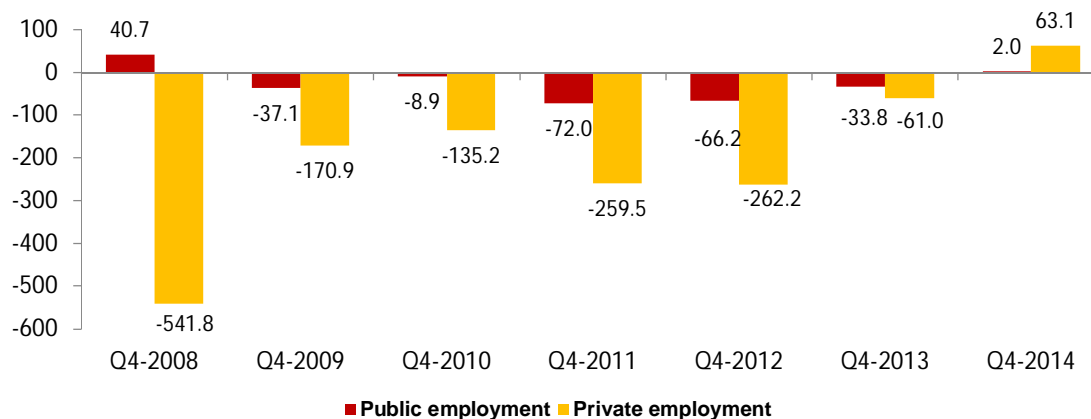
The number of wage earners increased by 69,900. Those with a permanent contract increased by 110,900, and those with a temporary contract decreased by 41,000. The temporary employment rate decreased by four tenths, reaching 24.24%.

In turn, the total number of self-employed workers decreased by 7,300 persons in the fourth quarter of 2014. Only the group of entrepreneurs without wage earners and independent workers increased (22,200).

The number of wage earners increased by 389,700 over the last 12 months, and that of self-employed workers did so by 43,400. Among these, 42,500 were entrepreneurs without wage-earners of independent workers. Permanent employment increased by 212,800 persons and temporary employment did so by 176,900.

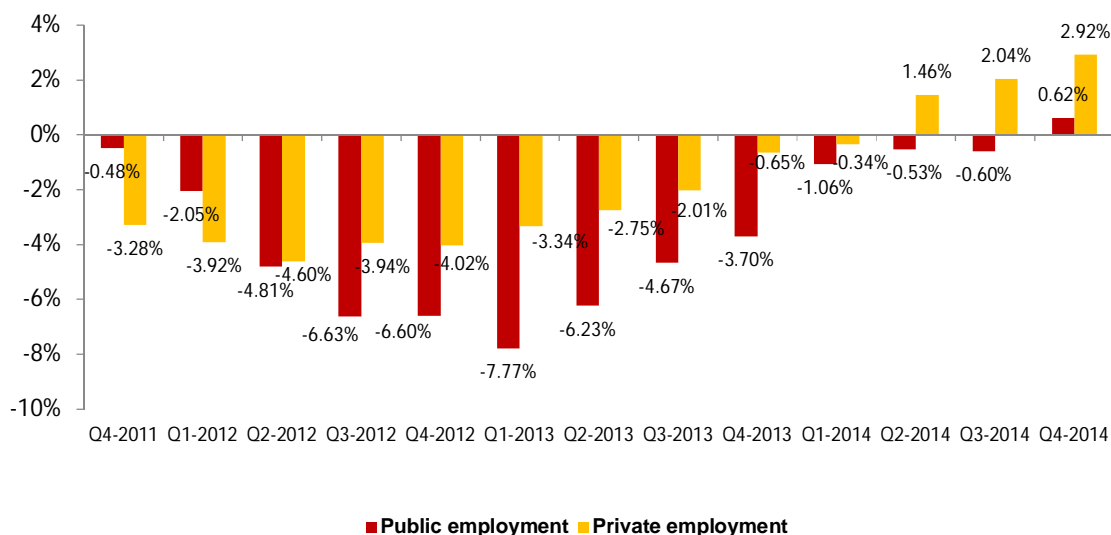
Private employment<sup>1</sup> increased by 63,100 persons this quarter and stood at 14,641,500. In turn, public employment<sup>2</sup> did so by 2,000 persons, reaching 2,927,500.

**Quarter-on-quarter employment evolution by nature of the employer, in thousands (variation of 4Q as compared with Q3 of the same year)**



Private employment registered an annual variation of 2.92%. In turn, employment in the public sector recorded an increase of 0.62%. Over the whole year, employment increased by 415,700 persons in the private sector and by 18,100 in the private sector.

**Employment evolution by nature of the employer, annual rate**



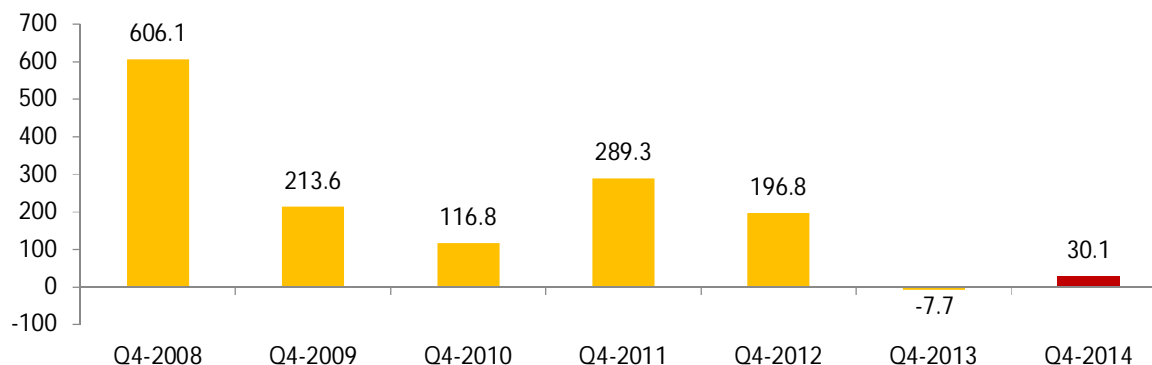
<sup>1</sup> Employment in the private sector includes: wage earners from the private sector, employers, independent workers and businesspersons without wage earners, members of a cooperative, family assistance and other professional situations.

<sup>2</sup> Employment in the public sector includes all the wage earners of public enterprises and of the National and Regional Administrations, including both workers contributing to the SS and those attached to an Insurance society.

## Unemployment and unemployment rate

Unemployment increased by 30,100 persons this quarter. Except for 2013 data, this was the most favourable figure for a fourth quarter since 2004. The total number of unemployed persons stood at 5,457,700. In relative terms, unemployment increased 0.55% this quarter.

**Quarter-on-quarter unemployment evolution, in thousands  
(variation of 4Q as compared with 3Q of the same year)**



The unemployment rate increased by three hundredths, standing at 23.70%. Within the last 12 months, the unemployment rate had decreased by more than two points, from 25.73 in the fourth quarter of 2013.

By sex, men concentrated the unemployment increase this quarter, with 30,200 more and up to a 2,823,700 total. Among women, the figure is almost the same than in the previous quarter, with 2,634,000 unemployed women.

The male unemployment rate increased 28 hundredths, reaching 22.80%, whilst the female rate decreased by 27 hundredths, down to 24.74%. The composition of unemployment observed since the year 2008 remained practically unaltered, with relatively little distance between the male and female rates, and a greater number of unemployed men than unemployed women.

By age group, unemployment decreased among persons older than 25 (54,000 less unemployed persons) and increased among those aged 25 and over (84,000 more).

By nationality, unemployment increased by 17,700 among Spanish nationals and by 12,400 among foreign nationals. The unemployment rate for the foreign population was 33.22%, that is, 10.83 points higher than that of persons with Spanish nationality (22.39%).

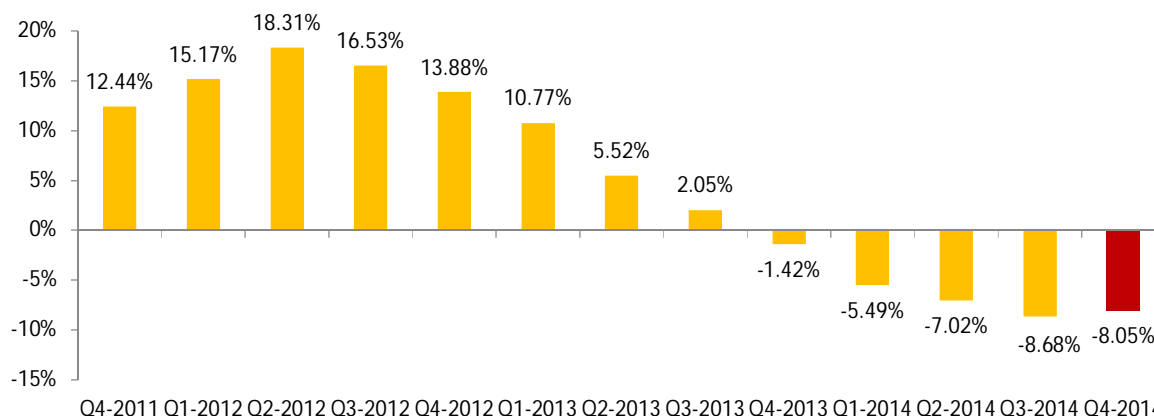
This quarter, unemployment decreased in *Agriculture* (14,100 less unemployed persons). In turn, it increased in *Services* (35,100 more), in *Industry* (15,500) and in *Construction* (4,900).

Unemployment decreased by 18,900 among those persons seeking their first job. In turn, unemployed persons who lost their job over a year ago increased by 7,500.

The decrease in the unemployment annual variation rate was -8.05%. The total figure of unemployed persons decreased by 477,900 persons in one year, with a decrease of 285,100 for men and 192,800 for women.

By age and in annual terms, the unemployment reduction affected all age groups, except for persons aged 55 years old and over.

**Evolution of the total number of unemployed persons, annual rate**



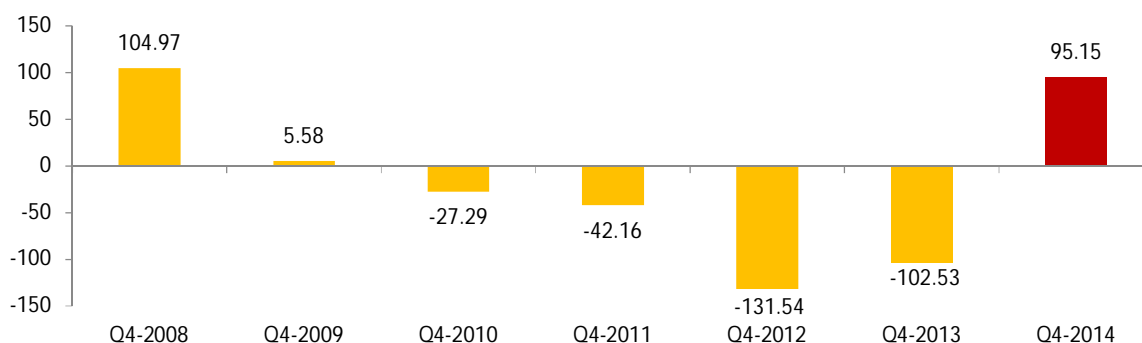
Over the last twelve months, unemployment decreased in *Services* (172,800 less unemployed persons), *Construction* (69,700), and *Industry* (36,400). In turn, it increased in *Agriculture* (24,200 more).

For its part, the number of unemployed persons who lost their jobs over one year ago decreased by 211,800 and the number of unemployed persons seeking their first job did so by 11,400.

### Economically active population and activity rate

The economically active population experienced an increase of 95,200 persons in the fourth quarter of 2014, standing at 23,026,800 persons. The number of active Spanish nationals increased by 87,400 and that of foreign nationals did so by 7,800. This is the first increase in economically active persons in a fourth quarter since 2009.

**Quarter-on-quarter activity evolution, in thousands  
(variation of 4Q as compared with 3Q of the same year)**

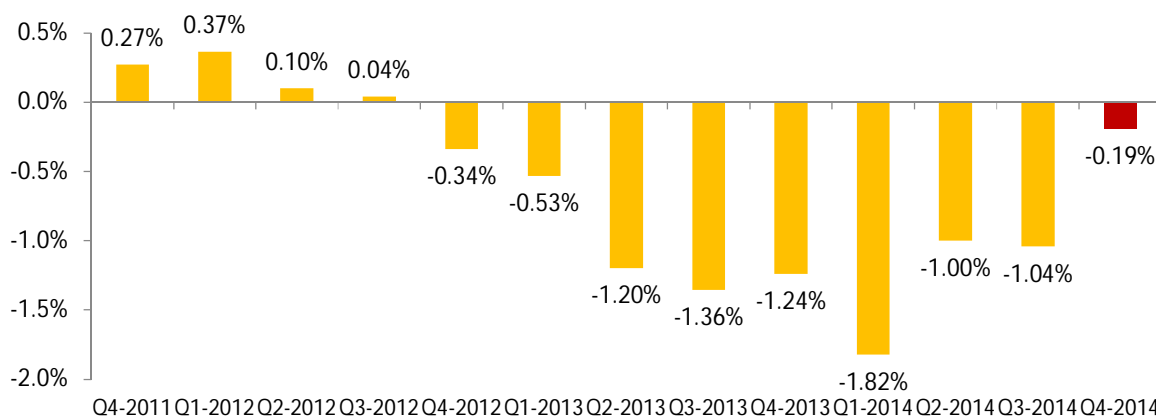


The economic activity rate increased by 0.25 points this quarter, reaching 59.77%. By sex, the male activity rate decreased seven hundredths, down to 65.95%, while the female rate rebounded by 55 hundredths, up to 53.90%.

The activity rate of Spanish nationals increased 21 hundredths this quarter, standing at 58.24%. That of foreign nationals did so by 65 hundredths, reaching 73.89%. The distance between both rates exceeded 15.5 points in favour of foreign nationals, this circumstance being explained mainly by the different age structures of the two population groups.

In annual terms, the economically active population decreased by 44,000 persons, mainly due by the decrease of working age population (16-64 years old), whose cause is population ageing. Nevertheless, the decrease in economically active persons observed in previous quarters eased. The annual variation rate was -0.19%, as compared with -1.04% recorded the previous quarter.

**Evolution of the total number of economically active persons, annual rate**



## Households

The number of households stood at 18,362,000, recording an increase of 6,300, as compared with the third quarter of 2014.

The households in which all economically active members were unemployed decreased this quarter by 23,100, reaching a total of 1,766,300. In turn, the number of households in which all of the economically active members were employed increased by 37,000, up to 9,110,100.

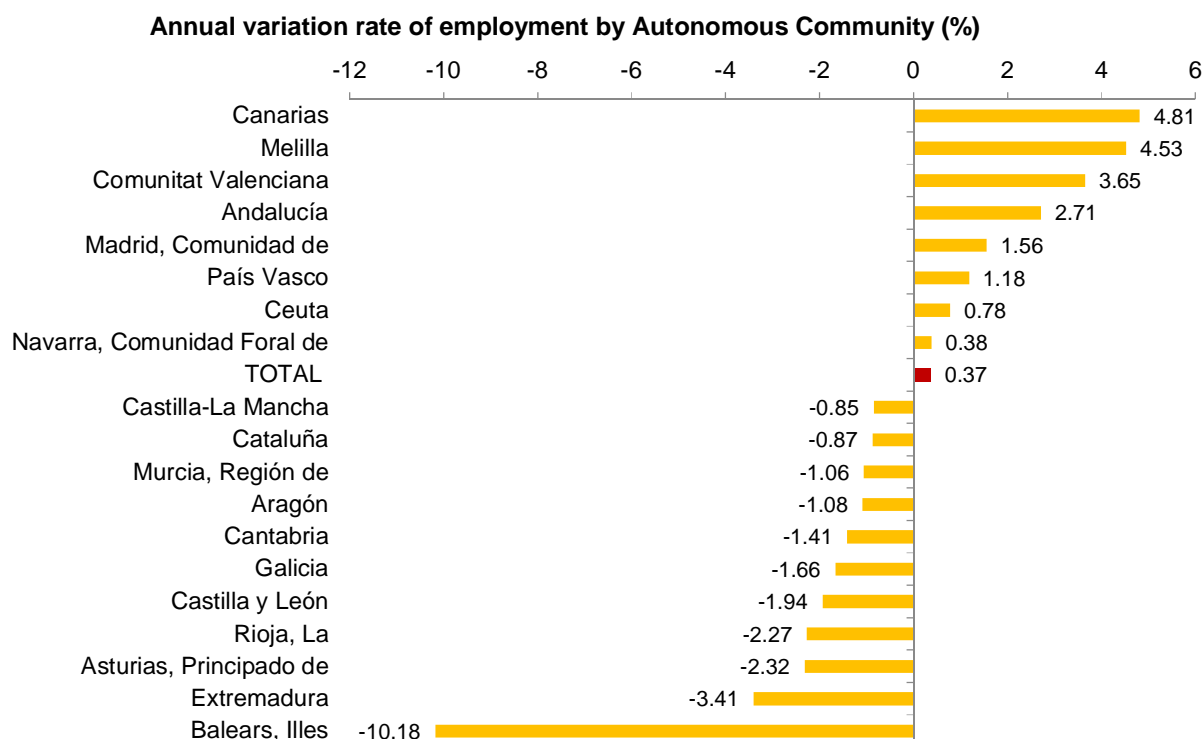
In year-on-year comparison, the number of households in which all economically active persons were unemployed decreased by 159,600, whereas those in which all economically active members were employed increased by 422,600.

### Results by Autonomous Community<sup>3</sup>

The Autonomous Communities that registered the greatest increases in employment this quarter were Andalucía (70,800 more employed persons), Comunitat Valenciana (65,300) and Comunidad de Madrid (42,800).

In turn, the Autonomous Communities that registered the greatest decreases in employment were Illes Balears (54,200 less employed persons) and Cataluña (26,700).

In relative terms, the Autonomous Communities with the greatest increases in quarterly employment performance were Canarias (4.81%), Comunitat Valenciana (3.65%), and Andalucía (2.71%).



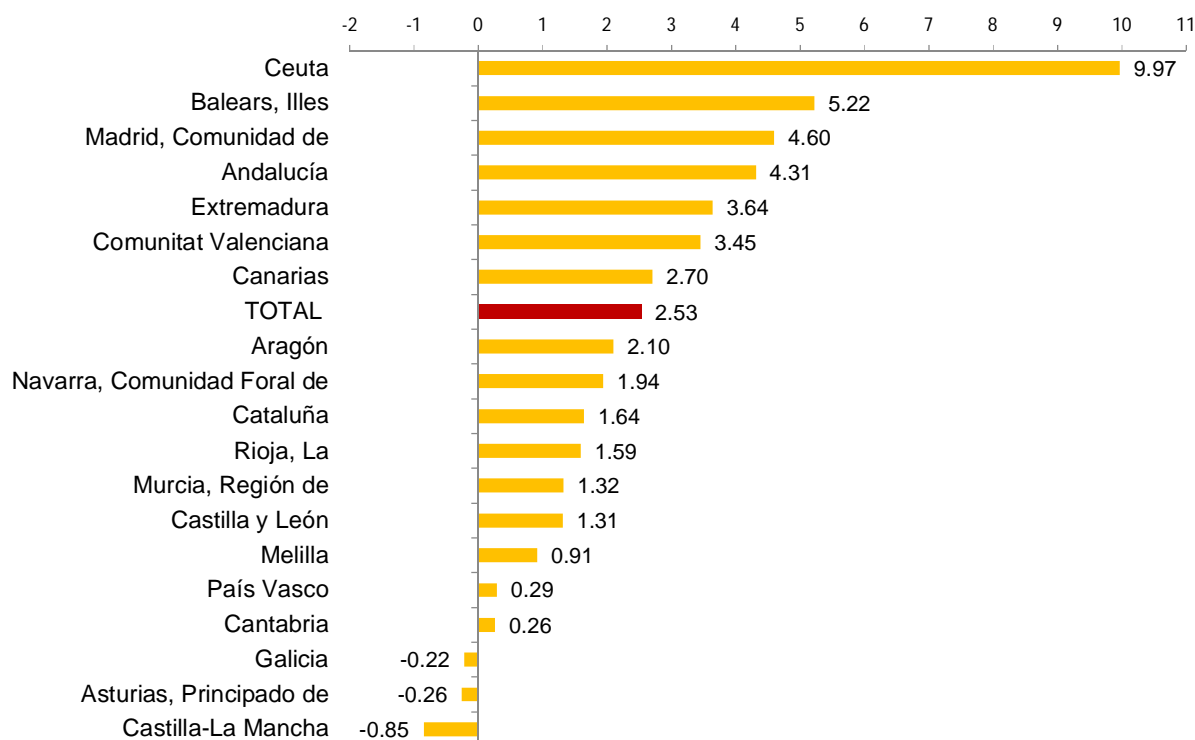
In terms of annual variation, most Autonomous Communities presented increases in employment. The greatest increases were registered by Comunidad de Madrid (122,600 more), Andalucía (110,900) and Comunitat Valenciana (61,800).

In relative terms, the greatest annual variations in employment were recorded in Illes Balears (5.22%), Comunidad de Madrid (4.60%) and Andalucía (4.31%).

<sup>3</sup> As with the rest of the EAPS data, employment results in this section are presented according to the Autonomous Community of residence of those persons interviewed in the survey, and not according to where their workplace is.



**Quarter-on-quarter employment variation rate by Autonomous Community (%)**



The greatest unemployment drops, as compared to the previous quarter, were recorded in Comunitat Valenciana (44,700), Andalucía (23,300) and Canarias (20,100). In turn, the highest increases were registered in Cataluña (30,500 more), Comunidad de Madrid (28,800) and País Vasco (19,000).

In the annual variation, unemployment decreased almost in all Autonomous Communities. The greatest decreases were recorded in Comunitat Valenciana (98,900 less unemployed persons), Cataluña (83,000), and Comunidad de Madrid (73,200).

Comunidad Foral de Navarra (14.92%), País Vasco (16.60%) and La Rioja (17.17%) registered the lowest unemployment rates of Spain this quarter. At the other end of the spectrum, Andalucía registered a 34.23% rate and Canarias a 31.08% rate.

The greatest increases in the number of economically active persons this quarter were recorded in Comunidad de Madrid (71,600 more), Andalucía (47,500) and País Vasco (29,200). The greatest decreases were recorded in Illes Balears (43,900 less economically active persons), and Galicia (11,300).

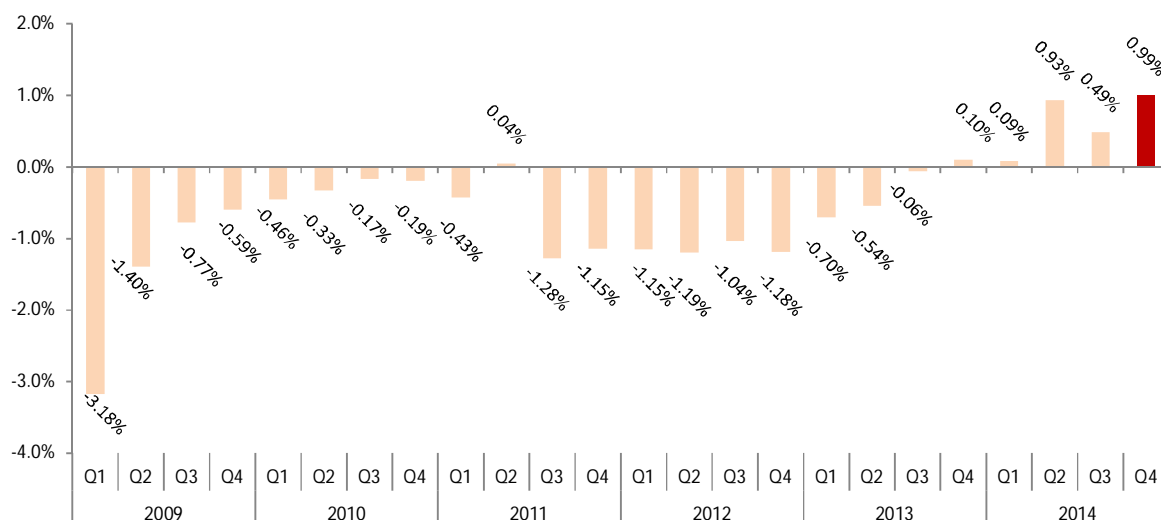
Over the last 12 months, Comunidad de Madrid and Andalucía registered the greatest increases in the number of economically active persons, with 49,400 and 44,100 more persons, respectively. The greatest decreases were registered in Comunitat Valenciana (37,100 less), Cataluña (33,700), and Galicia (19,200).

The economic activity rates this quarter ranged between 64.82% recorded in Comunidad de Madrid and 51.63% registered in Principado de Asturias.

## Deseasonalised series

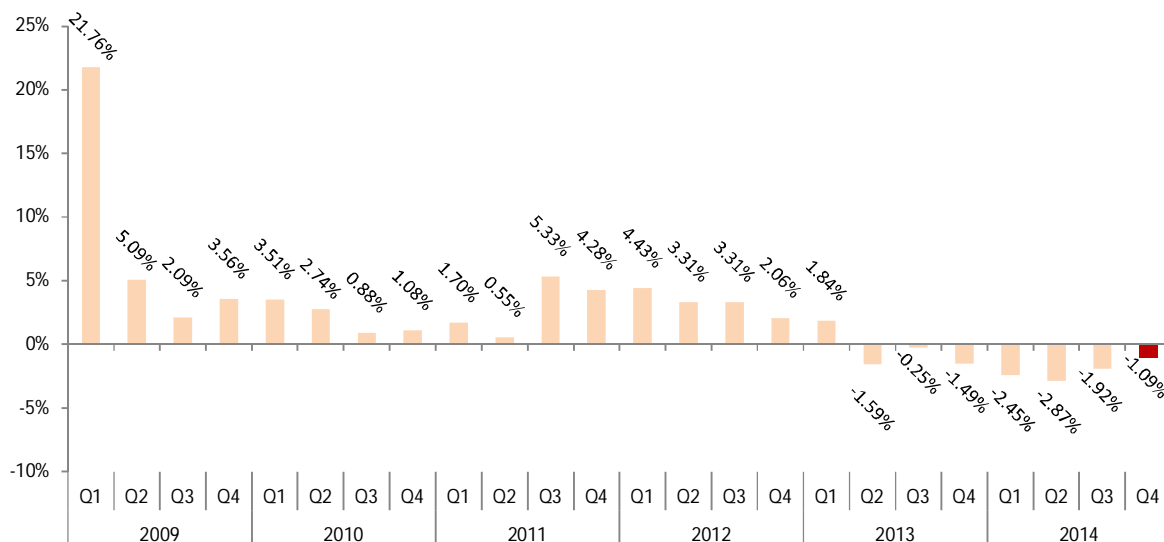
During the fourth quarter 2014, the quarterly variation rate of employment in deseasonalised terms was 0.99%, the highest one since the third quarter 2005.

**Deseasonalised evolution of employment, as a quarterly variation rate**



Regarding unemployment deseasonalised results, there was a decrease of 1.09, confirming the downward trend of the six previous quarters.

**Deseasonalised evolution of unemployment, as a quarterly variation rate**



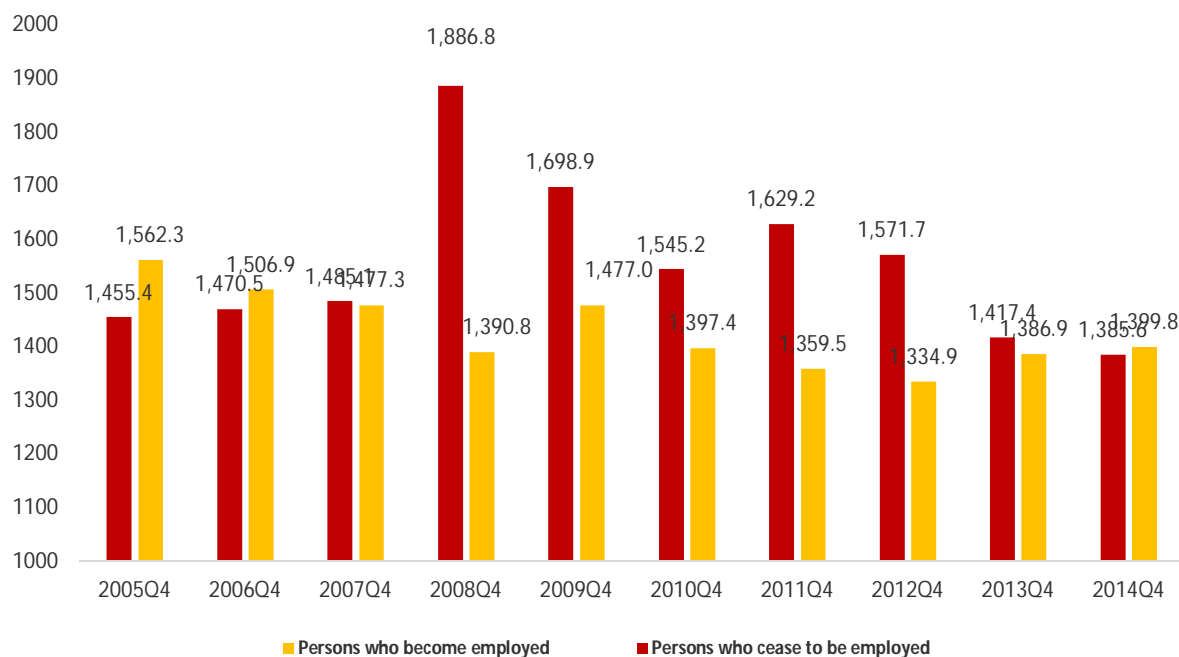
As explained in the methodology applied to deseasonalise, the deseasonalisation model is maintained for a year but the coefficients are recalculated quarterly. Therefore the previous results are revised each quarter and the last available series shall be consulted. The results of the deseasonalised employment and unemployment series since 1990 and the description of the method used can be found in

[http://www.ine.es/en/daco/daco42/daco4211/epa\\_desestacional\\_en.xls](http://www.ine.es/en/daco/daco42/daco4211/epa_desestacional_en.xls)

### Flows in absolute figures, as compared with the previous quarter<sup>4</sup>

The total flow of persons who become employed in the fourth quarter of 2014 was 1,399,800 persons, a figure higher by 12,900 than that of the same quarter of the previous year. In turn, the number of persons who were employed three months ago and who are not employed now was 1,385,600 persons, which is 31,800 less than in the same quarter of 2013.

**Flows of persons (in thousands) who become employed and who cease to be employed each quarter**

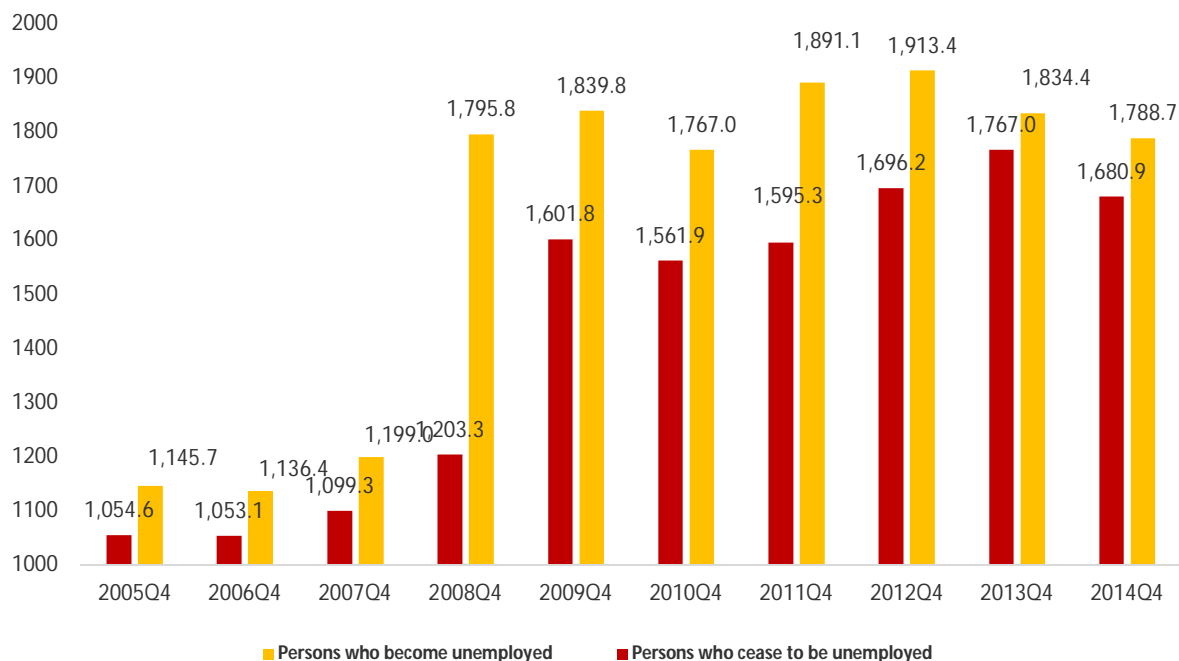


The number of persons who were unemployed three months ago and who are not unemployed now stood at 1,680,900. This figure was lower than that recorded the same period of the previous year (1,767,000).

In turn, the total flow of persons who become unemployed reached 1,788,700 persons, as compared with 1,834,400 recorded in the fourth quarter of 2013.

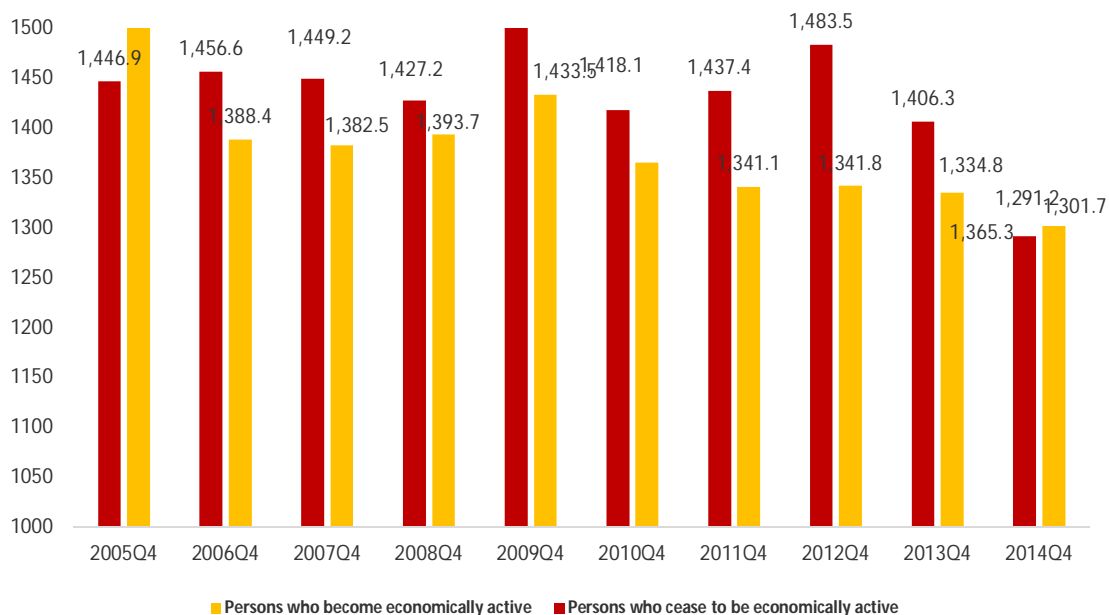
<sup>4</sup> This epigraph compiles the results of the *Economically Active Population Flow Statistics*. Due to the methodology used when preparing it, the results might not match the net balances of quarterly EAPS. The differences are caused by the "no data recorded" groups (persons turning 16 years old in the change between one quarter and the next one who did not live in Spain in the previous quarter).

### Flows of persons (in thousands) who become unemployed and who cease to be unemployed each quarter



This quarter 1,301,700 persons who become economically active were recorded (as compared with 1,334,800 registered the same quarter of 2013).

### Flows of persons (in thousands) who become economically active and who cease to be economically active each quarter



In turn, a total of 1,291,200 have ceased to be economically active this quarter, as compared with the 1,406,300 of the same period in 2013.

The flow of persons aged 60 years old and over who ceased to be employed and became economically inactive was 93,600 persons, which was higher than that recorded in the fourth quarter of 2013 (88,000).

The number of persons aged 25 years old or less that directly become employed from being economically inactive was 86,100. This figure was slightly lower than that of the fourth quarter 2013 (90,000).

The data on flows on which these comments are based may be found in the annex to this press release [http://www.ine.es/en/daco/daco42/daco4211/epafluj0414\\_en.xls](http://www.ine.es/en/daco/daco42/daco4211/epafluj0414_en.xls)

## **EAPS results by province**

The provincial results summary of the EAPS may be accessed via the following link:

[http://www.ine.es/en/daco/daco42/daco4211/epapro0414\\_en.pdf](http://www.ine.es/en/daco/daco42/daco4211/epapro0414_en.pdf)

All of the provincial information from this survey may be accessed via the following links:

<http://difusion.ine.es/dynt3/inebase/en/index.htm?padre=996>

## Methodological note

### General features

The Economically Active Population Survey (EAPS) is a continuous sample-based study aimed at family dwellings, and which has been conducted since 1964.

The additional sample collected by the *Galician Statistics Institute* (IGE) has been incorporated as of the third quarter of 2009, using the same fieldwork system and identical methodology to that of the INE. Therefore, apart from the 3,588 census sections that have made up the sample for the whole of Spain since 2005, we must take into account the 234 additional sections in the Autonomous Community of Galicia. Since the third quarter of 2009, the EAPS sample is made up of 3,822 census sections from the more than 30,000 census sections into which Spain is divided. An average of 18 households are surveyed in each one, except in the provinces of Barcelona, Madrid, Sevilla, Valencia and Zaragoza, where the number of households surveyed is 22. Thus, the sample size is approximately 65,000 dwellings, providing information on some 180,000 persons. The data is collected via personal and telephone interviews. The information is carefully filtered and computer-processed. Results are obtained within the month following the end of the reference quarter for the data.

### Main definitions

**(Economically) Active persons:** persons aged 16 years old and over who, during the reference week (the week prior to that when the interview is held), supplied labour for the production of goods and services, or were available to do so and in conditions to incorporate themselves into said production. They are divided into employed and unemployed persons.

**Employed persons:** persons aged 16 years old and over who, during the reference week, worked for at least one hour in exchange for payment (salary, wage, business benefit, etc.) in cash or in kind. Persons who, being employed, had been temporarily absent from their job due to illness, holidays, etc., are also considered employed persons.

Employed persons are classified, considering their professional status, as non-wage earners (employers, businesspersons without wage earners and independent workers, cooperative members, family assistance) and wage earners (public or private).

Considering the length of the working day, employed persons are classified as full-time and part-time employed persons. The usual working week may not be shorter than 30 hours in the first case, nor exceed 35 hours in the second.

Wage earners are classified as permanent and temporary. For the latter, the end of their contract or work relationship is set by means of objective conditions, such as the expiry of a certain period of time, the completion of a specific task, etc.

A significant category within employment is that of **time-related underemployment**, defined in the 16th International Labour Statisticians Conference (Geneva, 1998). The EAPS considers persons suffering time-related underemployment as employed persons who would like to work more hours, who are available to work more hours and whose effective working hours in the reference week are less than the number of hours usually worked by employed persons working full-time in the same branch of activity as that in which the underemployed person develops his/her main job.

**Unemployed persons:** persons aged 16 years old and over who, during the reference week, were jobless, available for work, and actively looking for a job. Persons who might have already found a job and are waiting to start are also considered to be unemployed, provided that they meet the first two conditions.

According to European Commission Regulation 1897/2000, the following are considered to be active search methods, in the four weeks prior to the interview:

- Being in contact with a public employment office for the purpose of finding work, whatever part they play in the initiative (the renewal of registration due to purely administrative reasons does not constitute active planning).
- Being in contact with a private office (temporary employment agency, specialised hiring agency, etc.) with the objective of finding work.
- Having sent an application directly to employers.
- Having searched via personal relations and trade unions, etc.
- Having advertised oneself or responded to newspaper advertisements.
- Having studied job vacancies.
- Having taken part in a test, public exam or interview in the framework of a contracting procedure.
- Having looked for land, premises or material.
- Having taken steps to obtain permits, licences or financial resources.

**(Economically) Inactive persons:** persons aged 16 years old and over not included in any of the above categories.

## Economically Active Population Flow Statistics (EAPFS): Quarterly changes in the labour situation

The Flows Statistics estimates the magnitude of all the movements that have taken place regarding employment, unemployment and economically inactive situations between the current and the previous quarter. In order to do so, a longitudinal monitoring of the persons interviewed in the EAPS over time is conducted.

Therefore, results are calculated from the common sample interviewed effectively in both periods, adding the sample of the persons who have turned 16 years of age during the three months and the sample of the persons who have arrived in Spain from abroad during that same period.

The rotation established for the EAPS, which consists in renovating one-sixth of the households in the sample each quarter, implies that the maximum available sample to calculate the estimates based on the common sample is 5/6. Nevertheless, incidences regarding information collection in one quarter or the next cause a greater decrease in the proportion of the sample used to estimate flows. Therefore, if the complete sample of persons aged 16 and over of a quarter is around 140,000 persons, the sample that holds flow estimates is a bit more than 100,000.

Elevation factors are calculated in the same way as they are calculated for the quarterly EAPS, but adding an additional measure to the total amount of employed, unemployed and economically inactive persons by Autonomous Community, with the intention that both samples (flow and complete EAPS samples) offer the same results for the main magnitudes in the current quarter.

This procedure, however, does not allow adjusting EAPS flow estimates with the results of previous quarters. This information must always be used in relation with the results of the current quarter. Any accounting exercise involving the addition or subtraction of flow figures to/from the current quarter figures will have discrepancies with the results of the previous quarter, due to the weighting of the used results and the presence in the current quarter of population that was not considered in the previous one (persons arrived from abroad and persons who have turned 16 years of age in the last three months).

A full overview of the results regarding flows may be accessed via the following link:

[http://www.ine.es/en/inebaseDYN/flujos30310/metoflujos\\_valores\\_absolutos\\_en.htm](http://www.ine.es/en/inebaseDYN/flujos30310/metoflujos_valores_absolutos_en.htm)

## Economically Active Population Survey Fourth Quarter 2014

### National results

(Continues)

	Current quarter	Variation on previous quarter		Variation on same quarter, previous year	
		Difference	Percentage	Difference	Percentage
1. Population aged 16 years and over by sex and labour status					
BOTH SEXES					
Population aged 16 years and over	38.523,4	0,2	0,00	-19,8	-0,05
Active population	23.026,8	95,2	0,41	-44,0	-0,19
- Employed	17.569,1	65,1	0,37	433,9	2,53
- Unemployed	5.457,7	30,1	0,55	-477,9	-8,05
Inactive	15.496,5	-95,0	-0,61	24,2	0,16
Activity rate	59,77	0,25	-	-0,08	-
Unemployment rate	23,70	0,03	-	-2,03	-
Population aged 16 to 64 years	30.267,7	-29,0	-0,10	-170,5	-0,56
Activity rate (16-64)	75,60	0,41	-	0,28	-
Unemployment rate (16-64)	23,82	0,02	-	-2,01	-
Employment rate (16-64)	57,60	0,29	-	1,73	-
MALES					
Population aged 16 years and over	18.773,7	-6,3	-0,03	-22,8	-0,12
Active population	12.382,0	-17,4	-0,14	-33,7	-0,27
- Employed	9.558,3	-47,6	-0,50	251,5	2,70
- Unemployed	2.823,7	30,2	1,08	-285,1	-9,17
Inactive	6.391,8	11,0	0,17	10,9	0,17
Activity rate	65,95	-0,07	-	-0,10	-
Unemployment rate	22,80	0,28	-	-2,23	-
Population aged 16 to 64 years	15.181,7	-20,4	-0,13	-96,7	-0,63
Activity rate (16-64)	81,02	0,04	-	0,28	-
Unemployment rate (16-64)	22,91	0,25	-	-2,25	-
Employment rate (16-64)	62,45	-0,17	-	2,03	-
FEMALES					
Population aged 16 years and over	19.749,6	6,5	0,03	3,0	0,01
Active population	10.644,9	112,5	1,07	-10,4	-0,10
- Employed	8.010,8	112,7	1,43	182,4	2,33
- Unemployed	2.634,0	-0,2	-0,01	-192,8	-6,82
Inactive	9.104,8	-106,0	-1,15	13,3	0,15
Activity rate	53,90	0,55	-	-0,06	-
Unemployment rate	24,74	-0,27	-	-1,78	-
Population aged 16 to 64 years	15.086,1	-8,6	-0,06	-73,8	-0,49
Activity rate (16-64)	70,16	0,78	-	0,29	-
Unemployment rate (16-64)	24,86	-0,25	-	-1,75	-
Employment rate (16-64)	52,71	0,76	-	1,44	-

### 2. Spanish population<sup>(1)</sup> aged 16 years and over by labour status

<b>SPANISH POPULATION AGED 16 YEARS AND OVER</b>	34.743,4	23,1	0,07	134,7	0,39
Active population	20.233,9	87,4	0,43	90,6	0,45
- Employed	15.704,0	69,7	0,45	429,3	2,81
- Unemployed	4.529,9	17,7	0,39	-338,7	-6,96
Inactive	14.509,6	-64,3	-0,44	44,1	0,31
Activity rate	58,24	0,21	-	0,04	-
Unemployment rate	22,39	-0,01	-	-1,78	-

<sup>(1)</sup> including dual nationality



## National results

(Continuation)

	Current quarter	Variation on previous quarter		Variation on same quarter, previous year	
		Difference	Percentage	Difference	Percentage

### 3. Foreign population aged 16 years and over by labour status

FOREIGN POPULATION AGED 16 YEARS AND OVER	3.779,9	-22,9	-0,60	-154,6	-3,93
Active population	2.793,0	7,8	0,28	-134,6	-4,60
- Employed	1.865,1	-4,7	-0,25	4,6	0,25
- Unemployed	927,8	12,4	1,36	-139,2	-13,05
Inactive	987,0	-30,7	-3,01	-19,9	-1,98
Activity rate	73,89	0,65	-	-0,52	-
Unemployment rate	33,22	0,35	-	-3,23	-

### 4. Employed by sex, age group and economic sector

BOTH SEXES	17.569,1	65,1	0,37	433,9	2,53
16 to 19 years	81,8	-9,8	-10,74	16,7	25,58
20 to 24 years	675,2	-21,5	-3,08	-5,1	-0,75
25 to 29 years	1.609,0	-40,2	-2,44	-4,9	-0,30
30 to 34 years	2.292,9	-17,9	-0,78	-42,8	-1,83
35 to 39 years	2.855,6	14,9	0,53	35,0	1,24
40 to 44 years	2.737,2	6,6	0,24	80,6	3,03
45 to 49 years	2.500,4	22,1	0,89	74,1	3,05
50 to 54 years	2.211,1	62,4	2,91	131,8	6,34
55 and over	2.606,0	48,4	1,89	148,5	6,04
MALES	9.558,3	-47,6	-0,50	251,5	2,70
16 to 19 years	49,9	-6,4	-11,40	11,9	31,30
20 to 24 years	351,5	-16,5	-4,49	-2,3	-0,65
25 to 29 years	823,7	-27,2	-3,19	18,5	2,30
30 to 34 years	1.210,3	-8,9	-0,73	-24,3	-1,97
35 to 39 years	1.551,6	-6,4	-0,41	4,6	0,30
40 to 44 years	1.518,8	0,8	0,05	60,0	4,12
45 to 49 years	1.378,7	1,9	0,14	51,5	3,88
50 to 54 years	1.209,4	9,9	0,83	57,2	4,97
55 and over	1.464,3	5,2	0,35	74,3	5,34
FEMALES	8.010,8	112,7	1,43	182,4	2,33
16 to 19 years	31,9	-3,4	-9,70	4,8	17,58
20 to 24 years	323,8	-5,0	-1,51	-2,8	-0,85
25 to 29 years	785,3	-13,1	-1,64	-23,4	-2,89
30 to 34 years	1.082,6	-9,1	-0,83	-18,5	-1,68
35 to 39 years	1.303,9	21,3	1,66	30,4	2,39
40 to 44 years	1.218,4	5,9	0,49	20,5	1,71
45 to 49 years	1.121,7	20,2	1,84	22,5	2,05
50 to 54 years	1.001,6	52,5	5,53	74,6	8,05
55 and over	1.141,6	43,3	3,94	74,2	6,95
TOTAL EMPLOYED	17.569,1	65,1	0,37	433,9	2,53
Agriculture	728,9	62,8	9,42	-48,4	-6,23
Industry	2.438,8	11,7	0,48	98,0	4,19
Construction	1.030,4	7,8	0,77	40,0	4,04
Services	13.371,0	-17,2	-0,13	344,2	2,64

## National results

(Continuation)

	Current quarter	Variation on previous quarter		Variation on same quarter, previous year	
		Difference	Percentage	Difference	Percentage
<b>5. Employed by professional status, type of contract, public / private sectors and working hours</b>					
TOTAL EMPLOYED	17.569,1	65,1	0,37	433,9	2,53
BY PROFESSIONAL STATUS					
Self-employed workers	3.078,0	-7,3	-0,24	43,4	1,43
- Employers	892,9	-12,4	-1,37	13,7	1,56
- Independent workers	2.062,8	22,2	1,09	42,5	2,10
- Cooperatives members	24,7	-1,7	-6,31	-0,7	-2,72
- Family workers	97,5	-15,4	-13,67	-12,1	-11,05
Employees	14.483,1	69,9	0,49	389,7	2,76
- With a permanent job	10.972,0	110,9	1,02	212,8	1,98
- With a temporary job	3.511,1	-41,0	-1,15	176,9	5,30
Others	8,0	2,4	42,87	0,8	11,06
BY PUBLIC / PRIVATE SECTORS					
Employed by public sector	2.927,5	2,0	0,07	18,1	0,62
Employed by private sector	14.641,5	63,1	0,43	415,7	2,92
BY WORKING HOURS					
Full-time employed	14.748,7	-130,8	-0,88	367,4	2,55
Males	8.828,1	-68,8	-0,77	263,7	3,08
Females	5.920,6	-62,0	-1,04	103,6	1,78
Part-time employed	2.820,4	195,9	7,46	66,5	2,41
Males	730,1	21,2	2,99	-12,2	-1,65
Females	2.090,2	174,7	9,12	78,7	3,92

\*) Private employment are all persons in employment other than public employees. Namely: private employees, employers, independent workers, cooperative members, family workers and other professional status.

## 6. Unemployed by sex, age group, and economic sector

BOTH SEXES	5.457,7	30,1	0,55	-477,9	-8,05
16 to 19 years	168,2	-15,5	-8,42	-32,9	-16,36
20 to 24 years	645,5	-38,5	-5,63	-60,5	-8,57
25 to 54 years	4.030,0	63,1	1,59	-406,4	-9,16
55 and over	614,0	20,9	3,52	21,9	3,69
MALES	2.823,7	30,2	1,08	-285,1	-9,17
16 to 19 years	85,9	-9,5	-10,00	-27,1	-23,99
20 to 24 years	341,4	-28,9	-7,82	-35,2	-9,35
25 to 54 years	2.031,6	47,0	2,37	-245,8	-10,79
55 and over	364,8	21,7	6,34	23,0	6,72
FEMALES	2.634,0	-0,2	-0,01	-192,8	-6,82
16 to 19 years	82,2	-5,9	-6,71	-5,8	-6,55
20 to 24 years	304,2	-9,5	-3,04	-25,3	-7,68
25 to 54 years	1.998,4	16,1	0,81	-160,6	-7,44
55 and over	249,2	-0,8	-0,33	-1,1	-0,44
TOTAL UNEMPLOYED	5.457,7	30,1	0,55	-477,9	-8,05
Agriculture	271,4	-14,1	-4,95	24,2	9,79
Industry	212,1	15,5	7,90	-36,4	-14,64
Construction	228,9	4,9	2,19	-69,7	-23,36
Services	1.430,9	35,1	2,52	-172,8	-10,77
Lost their job more than 1 year ago	2.754,1	7,5	0,27	-211,8	-7,14
First job seekers	560,4	-18,9	-3,25	-11,4	-1,99

## National results

(Conclusion)

	Current quarter	Variation on previous quarter		Variation on same quarter, previous year	
		Difference	Percentage	Difference	Percentage

### 7. Unemployment rate by relationship with the reference person

TOTAL	23,70	0,03	-	-2,03	-
Reference person	19,27	-0,21	-	-2,14	-
Spouse or partner	19,85	0,15	-	-1,29	-
Child	41,60	0,63	-	-2,42	-
Other relatives	32,52	1,55	-	-4,27	-
Unrelated persons	19,67	0,11	-	1,22	-

### 8. Household data

TOTAL HOUSEHOLDS	18.362,0	6,3	0,03	116,9	0,64
Households with at least one active member	13.440,7	75,6	0,57	83,3	0,62
- All member employed	9.110,1	37,0	0,41	422,6	4,86
- All member unemployed	1.766,3	-23,1	-1,29	-159,6	-8,29
Households without any active population	4.921,3	-69,3	-1,39	33,6	0,69

## Mobility according to activity in current and previous quarter

Classification in previous quarter	Classification in current quarter			
	Total	Employed	Unemployed	Inactive
<b>BOTH SEXES</b>				
Total	38.523,4	17.569,1	5.457,7	15.496,5
Employed	17.554,9	16.169,3	893,7	491,9
Unemployed	5.349,9	990,6	3.669,1	690,2
Inactive	15.507,0	408,7	893,0	14.205,3
Not classifiable	111,6	0,5	2,0	109,1
<b>MALES</b>				
Total	18.773,7	9.567,7	2.801,7	6.404,4
Employed	9.612,1	8.893,5	488,7	230,0
Unemployed	2.757,3	516,4	1.967,4	273,4
Inactive	6.349,8	157,3	345,3	5.847,2
Not classifiable	54,6	0,5	0,3	53,7
<b>FEMALES</b>				
Total	19.749,6	8.001,4	2.656,0	9.092,2
Employed	7.942,7	7.275,8	405,0	261,9
Unemployed	2.592,7	474,2	1.701,6	416,8
Inactive	9.157,2	251,4	547,7	8.358,1
Not classifiable	57,0	0,0	1,7	55,3

Grossing up factors of current quarter (forward analysis)

## Results by Autonomous Communities and Cities

(Continues)

	Current quarter	Variation on previous quarter		Variation on same quarter, previous year	
		Difference	Percentage	Difference	Percentage
<b>1. Population aged 16 years and over</b>					
TOTAL	38.523,4	0,2	0,00	-19,8	-0,05
Andalucía	6.870,8	0,7	0,01	17,1	0,25
Aragón	1.103,0	-2,0	-0,18	-2,9	-0,27
Asturias, Principado de	917,4	-2,0	-0,22	-8,4	-0,91
Balears, Illes	932,9	-0,8	-0,09	7,7	0,83
Canarias	1.788,5	4,2	0,24	14,4	0,81
Cantabria	495,0	-0,5	-0,09	-2,0	-0,41
Castilla y León	2.104,0	-4,9	-0,23	-18,0	-0,85
Castilla-La Mancha	1.691,5	-5,2	-0,30	-9,6	-0,56
Cataluña	6.076,7	6,7	0,11	-16,5	-0,27
Comunitat Valenciana	4.112,6	-7,2	-0,18	-2,9	-0,07
Extremadura	912,8	-1,7	-0,18	-3,8	-0,42
Galicia	2.364,5	-3,1	-0,13	-12,7	-0,54
Madrid, Comunidad de	5.247,6	16,4	0,31	14,5	0,28
Murcia, Región de	1.182,2	-0,7	-0,06	0,7	0,06
Navarra, Comunidad Foral de	521,8	0,1	0,01	0,8	0,15
País Vasco	1.815,3	-0,2	-0,01	1,6	0,09
Rioja, La	260,1	0,1	0,03	-0,6	-0,22
Ceuta	64,8	0,3	0,44	0,2	0,38
Melilla	61,8	0,1	0,13	0,7	1,19

## 2. Active population

TOTAL	23.026,8	95,2	0,41	-44,0	-0,19
Andalucía	4.077,6	47,5	1,18	44,1	1,09
Aragón	647,2	-4,7	-0,72	-2,2	-0,34
Asturias, Principado de	473,7	-6,3	-1,32	-10,5	-2,16
Balears, Illes	589,9	-43,9	-6,92	1,4	0,24
Canarias	1.100,8	14,7	1,35	-3,2	-0,29
Cantabria	278,0	-6,1	-2,16	-4,1	-1,45
Castilla y León	1.155,3	-9,9	-0,85	-10,4	-0,89
Castilla-La Mancha	993,5	-8,4	-0,84	-15,4	-1,52
Cataluña	3.804,6	3,8	0,10	-33,7	-0,88
Comunitat Valenciana	2.424,8	20,6	0,86	-37,1	-1,51
Extremadura	506,6	-1,1	-0,21	0,2	0,04
Galicia	1.264,3	-11,3	-0,89	-19,2	-1,50
Madrid, Comunidad de	3.401,4	71,6	2,15	49,4	1,47
Murcia, Región de	722,1	2,3	0,32	-2,9	-0,40
Navarra, Comunidad Foral de	310,7	1,2	0,37	0,4	0,12
País Vasco	1.048,6	29,2	2,86	3,2	0,31
Rioja, La	154,0	-5,6	-3,52	-3,4	-2,17
Ceuta	39,4	0,6	1,55	1,1	2,95
Melilla	34,4	1,0	3,08	-1,9	-5,21

\* Data below 5000 are subject to strong variations, due to sampling error

## Results by Autonomous Communities and Cities (Conclusion)

	Current quarter	Variation on previous quarter		Variation on same quarter, previous year	
		Difference	Percentage	Difference	Percentage
<b>3. Employed</b>					
TOTAL	17.569,1	65,1	0,37	433,9	2,53
Andalucía	2.681,8	70,8	2,71	110,9	4,31
Aragón	526,5	-5,7	-1,08	10,8	2,10
Asturias, Principado de	375,2	-8,9	-2,32	-1,0	-0,26
Balears, Illes	478,5	-54,2	-10,18	23,7	5,22
Canarias	758,7	34,8	4,81	20,0	2,70
Cantabria	226,8	-3,2	-1,41	0,6	0,26
Castilla y León	921,0	-18,2	-1,94	11,9	1,31
Castilla-La Mancha	710,3	-6,1	-0,85	-6,1	-0,85
Cataluña	3.048,1	-26,7	-0,87	49,3	1,64
Comunitat Valenciana	1.855,4	65,3	3,65	61,8	3,45
Extremadura	354,8	-12,5	-3,41	12,5	3,64
Galicia	1.000,4	-16,9	-1,66	-2,2	-0,22
Madrid, Comunidad de	2.789,0	42,8	1,56	122,6	4,60
Murcia, Región de	525,3	-5,6	-1,06	6,9	1,32
Navarra, Comunidad Foral de	264,3	1,0	0,38	5,0	1,94
País Vasco	874,5	10,2	1,18	2,5	0,29
Rioja, La	127,5	-3,0	-2,27	2,0	1,59
Ceuta	26,6	0,2	0,78	2,4	9,97
Melilla	24,2	1,0	4,53	0,2	0,91

## 4. Unemployed

TOTAL	5.457,7	30,1	0,55	-477,9	-8,05
Andalucía	1.395,7	-23,3	-1,64	-66,8	-4,57
Aragón	120,7	1,0	0,85	-13,0	-9,74
Asturias, Principado de	98,4	2,6	2,71	-9,5	-8,80
Balears, Illes	111,4	10,4	10,25	-22,3	-16,67
Canarias	342,2	-20,1	-5,55	-23,1	-6,34
Cantabria	51,2	-2,9	-5,34	-4,7	-8,38
Castilla y León	234,3	8,3	3,67	-22,3	-8,70
Castilla-La Mancha	283,1	-2,3	-0,80	-9,3	-3,17
Cataluña	756,5	30,5	4,20	-83,0	-9,89
Comunitat Valenciana	569,4	-44,7	-7,27	-98,9	-14,80
Extremadura	151,8	11,5	8,17	-12,3	-7,47
Galicia	263,8	5,6	2,16	-17,0	-6,07
Madrid, Comunidad de	612,3	28,8	4,93	-73,2	-10,68
Murcia, Región de	196,9	7,9	4,20	-9,8	-4,72
Navarra, Comunidad Foral de	46,4	0,2	0,34	-4,7	-9,12
País Vasco	174,1	19,0	12,27	0,7	0,42
Rioja, La	26,4	-2,7	-9,13	-5,4	-17,00
Ceuta	12,8	0,4	3,18	-1,3	(:)
Melilla	10,1	0,0	-0,21	-2,1	(:)

\* Data below 5,000 are subject to strong variations, due to sampling error

(:) The variation percentages calculated from low figures with high sampling errors are not significant

## Results by Autonomous Communities and Cities

(Absolute figures in thousands and rates in percentage)

### 5. Employed and unemployed by sex. Activity and unemployment rates

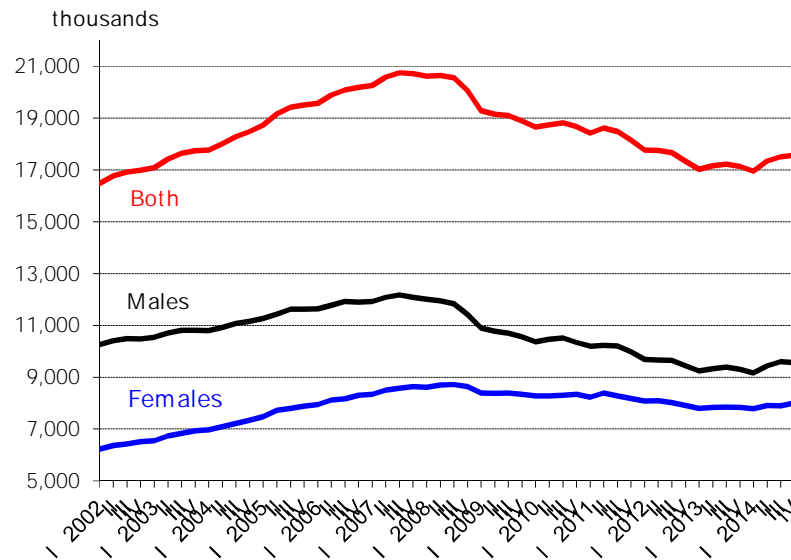
	Both sexes				Males				Females			
	Employed	Unemployed	Activity rate	Unem. rate	Employed	Unemployed	Activity rate	Unem. Rate	Employed	Unemployed	Activity rate	Unem. Rate
<b>TOTAL</b>	17.569,1	5.457,7	59,77	23,70	9.558,3	2.823,7	65,95	22,80	8.010,8	2.634,0	53,90	24,74
<b>Andalucía</b>	2.681,8	1.395,7	59,35	34,23	1.523,0	706,1	66,22	31,67	1.158,8	689,7	52,74	37,31
<b>Aragón</b>	526,5	120,7	58,68	18,65	300,2	54,9	65,27	15,46	226,3	65,8	52,26	22,53
<b>Asturias, Principado de</b>	375,2	98,4	51,63	20,78	197,6	50,4	56,94	20,34	177,7	48,0	46,84	21,27
<b>Balears, Illes</b>	478,5	111,4	63,23	18,88	256,6	63,8	69,26	19,92	222,0	47,6	57,31	17,64
<b>Canarias</b>	758,7	342,2	61,55	31,08	414,3	178,3	67,09	30,08	344,4	163,9	56,15	32,25
<b>Cantabria</b>	226,8	51,2	56,16	18,42	121,9	29,1	62,84	19,29	104,9	22,1	49,87	17,39
<b>Castilla y León</b>	921,0	234,3	54,91	20,28	519,7	116,0	61,28	18,24	401,3	118,4	48,72	22,78
<b>Castilla-La Mancha</b>	710,3	283,1	58,73	28,50	423,2	140,1	66,37	24,87	287,1	143,0	51,04	33,25
<b>Cataluña</b>	3.048,1	756,5	62,61	19,88	1.609,2	406,3	68,24	20,16	1.438,8	350,2	57,28	19,58
<b>Comunitat Valenciana</b>	1.855,4	569,4	58,96	23,48	1.025,4	299,7	65,68	22,62	830,0	269,7	52,49	24,53
<b>Extremadura</b>	354,8	151,8	55,50	29,96	208,0	78,1	63,29	27,28	146,8	73,8	47,86	33,44
<b>Galicia</b>	1.000,4	263,8	53,47	20,87	525,7	138,0	58,62	20,79	474,7	125,9	48,73	20,96
<b>Madrid, Comunidad de</b>	2.789,0	612,3	64,82	18,00	1.427,9	320,8	70,28	18,35	1.361,1	291,5	59,90	17,64
<b>Murcia, Región de</b>	525,3	196,9	61,08	27,26	300,4	101,5	68,25	25,26	224,9	95,4	53,97	29,78
<b>Navarra, Comunidad</b>	264,3	46,4	59,55	14,92	143,2	25,2	65,29	14,96	121,2	21,2	53,93	14,87
<b>País Vasco</b>	874,5	174,1	57,76	16,60	457,2	93,1	62,99	16,92	417,3	81,0	52,91	16,25
<b>Rioja, La</b>	127,5	26,4	59,19	17,17	72,4	11,4	65,52	13,64	55,1	15,0	53,07	21,40
<b>Ceuta</b>	26,6	12,8	60,82	32,46	17,2	6,8	71,56	28,26	9,5	6,0	49,39	38,95
<b>Melilla</b>	24,2	10,1	55,65	29,52	15,3	4,2	64,09	21,59	9,0	5,9	47,48	39,87

\* Data below 5,000 are subject to strong variations, due to sampling errors

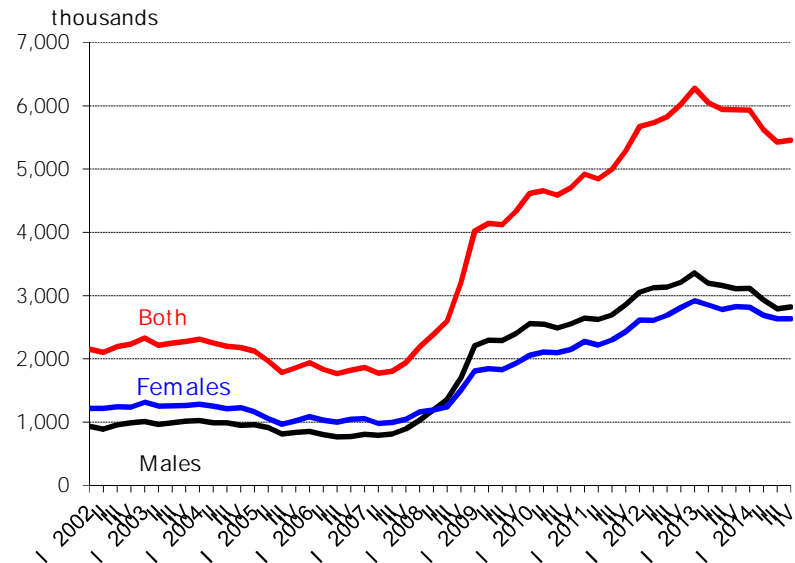
# Employed and unemployed by sex

APS Fourth Quarter 2014

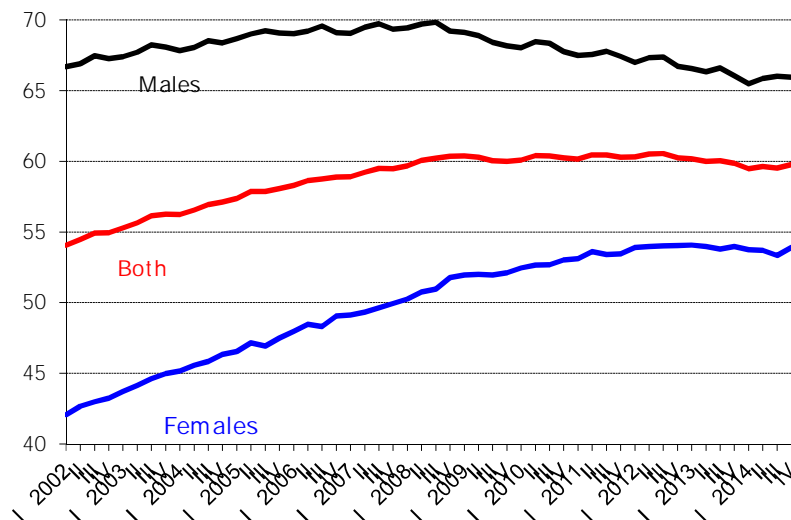
## Employment



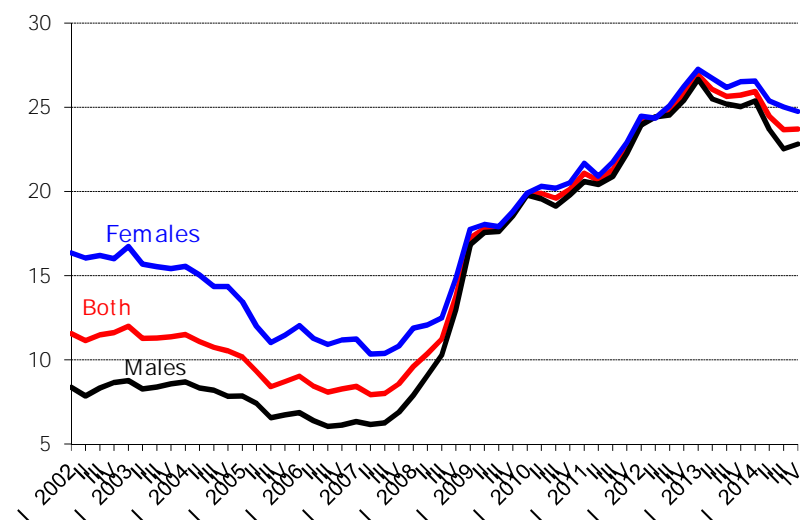
## Unemployment



## Activity rate



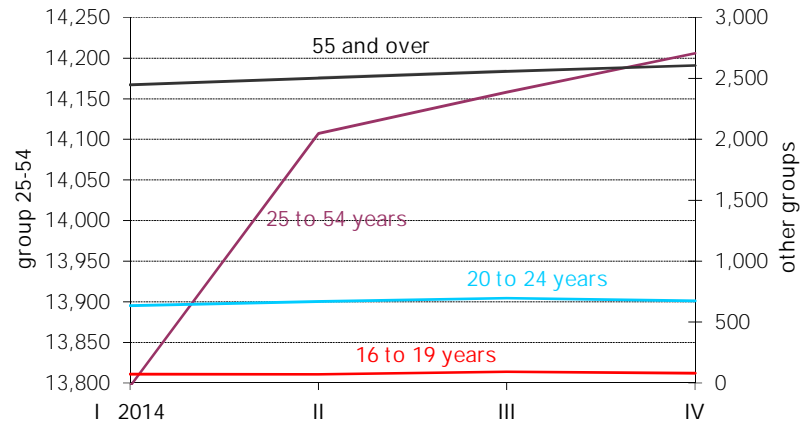
## Unemployment rate



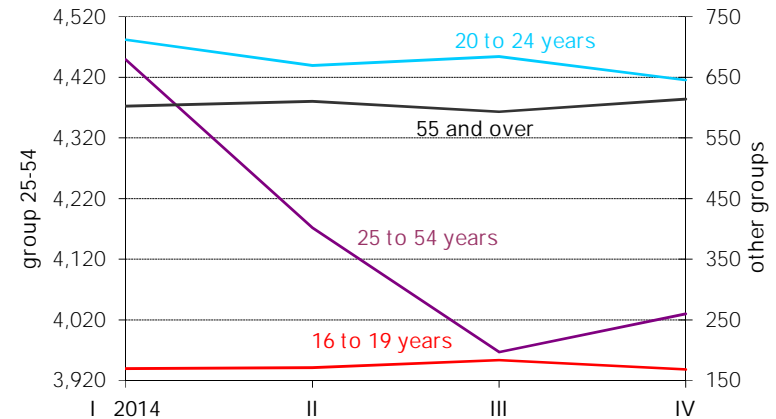
# Employed and Unemployed by age

APS Fourth Quarter 2014

Employment (thousands)

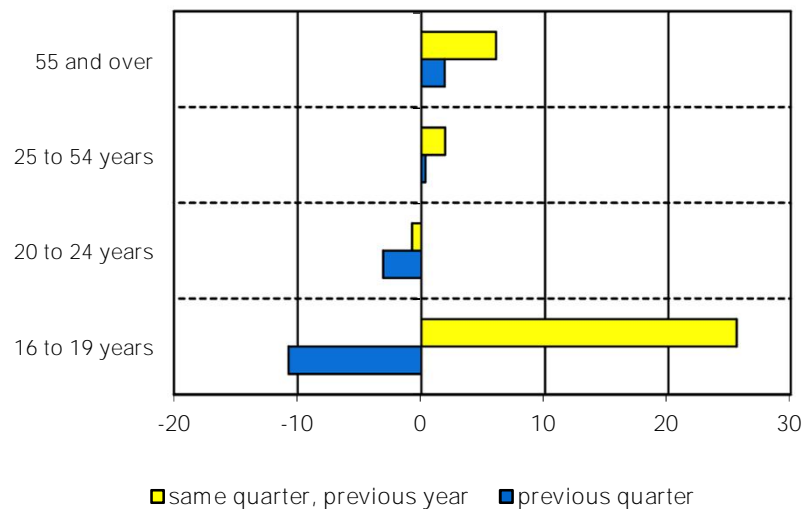


Unemployment (thousands)

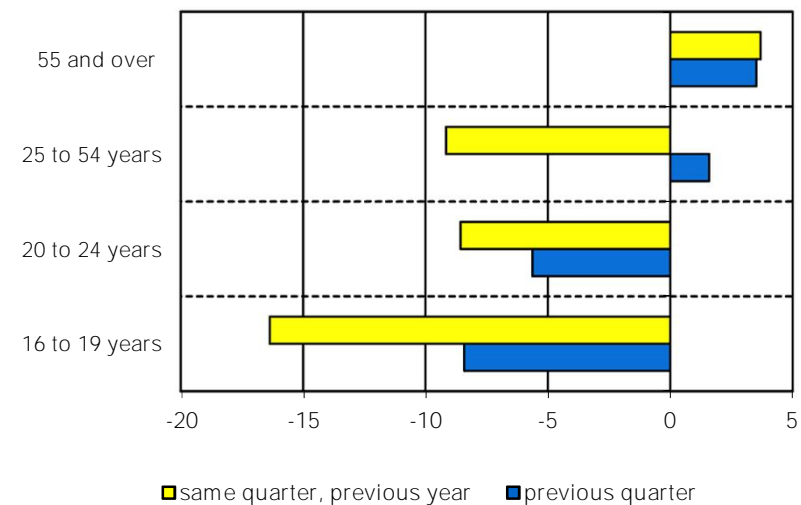


## Variation percentages over the previous quarter and over the same quarter of the previous year

Employment



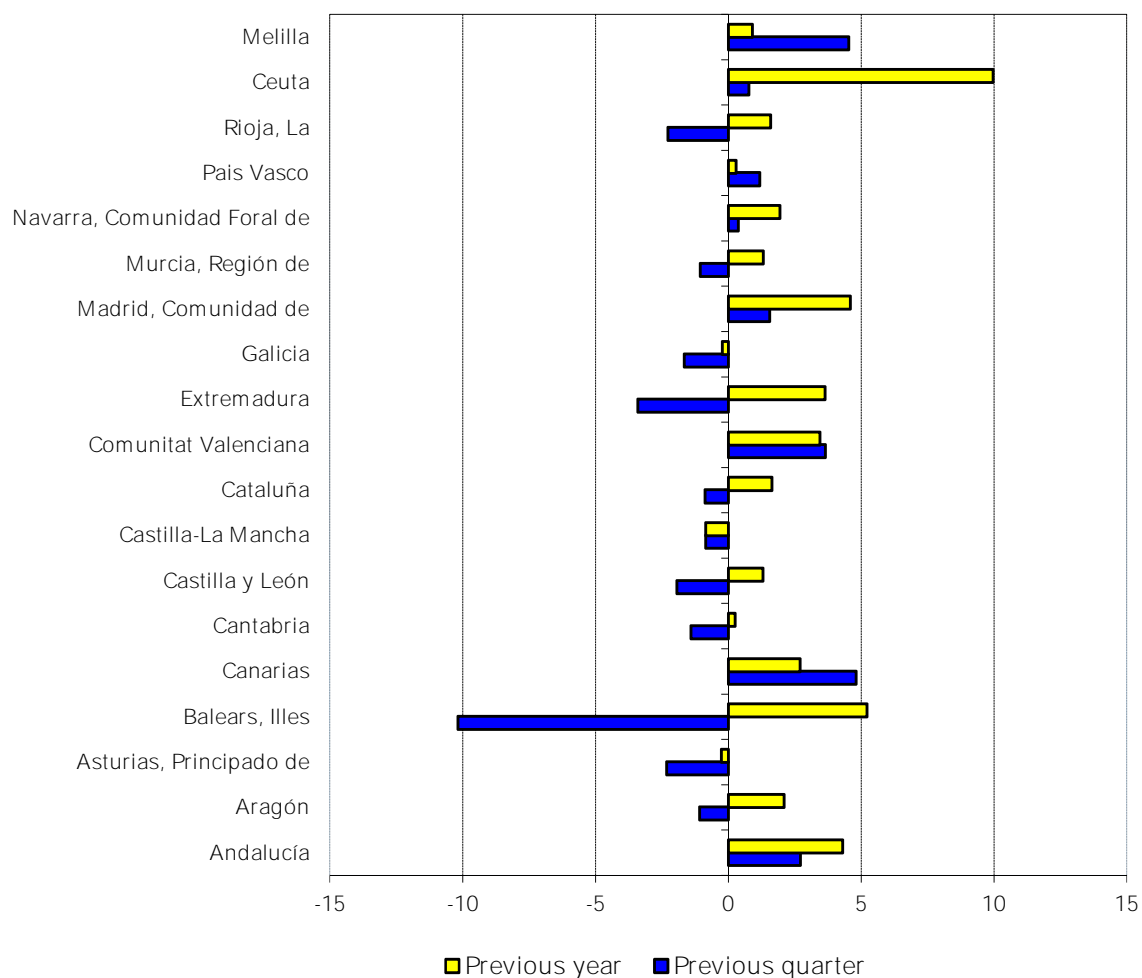
Unemployment





# Employment variation percentages over the previous quarter and over the same quarter of the previous year

## Fourth Quarter 2014



## Unemployment rate (Spain = 23.70 )

