

28 January 2016

Economically Active Population Survey (EAPS)
Fourth quarter 2015

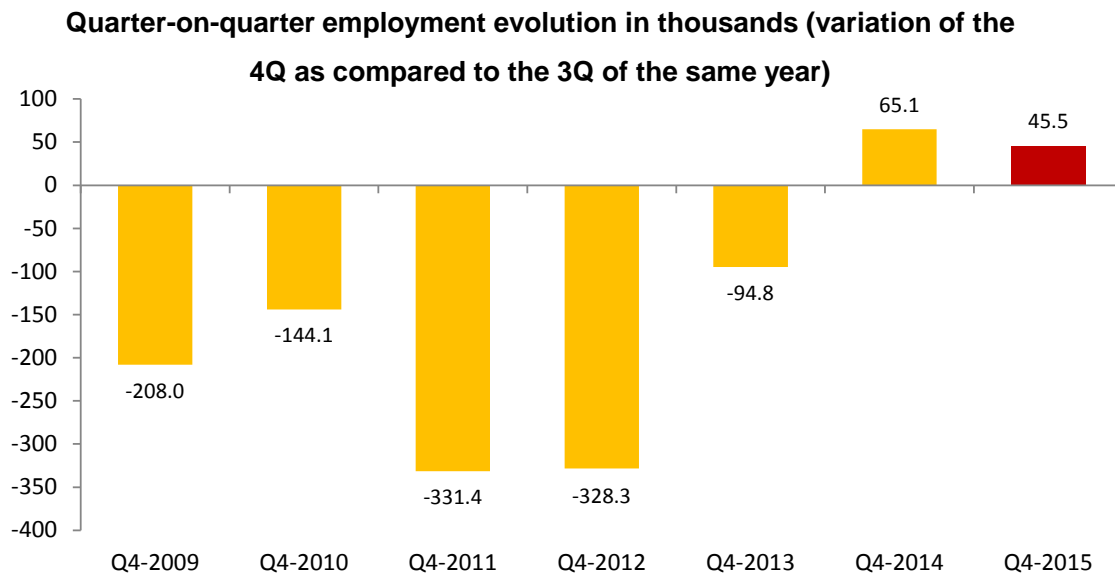
Main results

- In the fourth quarter of 2015, the number of employed persons increased by 45,500 over the third quarter and stands at 18,094,200. Adjusted for seasonal effect, quarterly variation was 0.73%. Employment has grown by 525,100 people in the last 12 months. The annual rate is 2.99%.
- This quarter, employment is up by 31,200 people in the private sector and 14,300 in the public sector. In the last twelve months, employment has increased by 452,000 people in the private sector and 73,100 in the public sector.
- The total number of wage earners with a permanent contract has grown by 103,400, and that of wage-earners with a temporary contract has dropped by 63,600. Regarding annual variation, permanent employment has increased by 170,600 people and temporary employment by 335,100. The number of self-employed persons rose by 6,900 this quarter. In the last 12 months self-employment has grown by 23,300.
- Employment has increased this quarter in *Agriculture* (70,200 more employed persons) and *Services* (54,900), and has dropped in *Industry* (55,500 fewer) and *Construction* (24,100 fewer). In the last year, employment has risen in all sectors. In *Services* there are 421,500 more employed people; in *Agriculture* there are 50,800 more; in *Construction*, 28,100 more and in *Industry*, 24,600 more.
- By Autonomous communities, the greatest increases in employment this quarter were in Andalusia (61,300 more), Community of Madrid (39,400) and Community of Valencia (22,600). In the Balearic Islands, employment fell by 53,800. In the last year, employment increased in all communities, except Cantabria. The greatest increases in employment were observed in Andalusia (137,500 more employed), Community of Valencia (56,700) and the Canary Islands (54,700).
- The number of unemployed persons has fallen by 71,300, (-1.47%) standing at 4,779,500. Adjusted for seasonal effect, quarterly variation was -3.66%. In the last 12 months unemployment has fallen by 678,200 (-12.43%). This is the largest drop in the number of unemployed since the EAPS was established.
- The unemployment rate stands at 20.90%, 0.29 points below the rate from the previous quarter. In the last year, this rate has decreased by 2.81 points.
- By communities, the greatest decreases in unemployment were observed in Andalusia (83,600 more unemployed), Community of Valencia (22,300) and Canary Islands (20,100). In annual terms, the greatest drops occurred in Andalusia (197,400 fewer) and Catalonia (87,900).
- This quarter, the number of economically active people has decreased by 25,800 to 22,873,700. The activity rate fell 0.07 points to 59.43%. Over the last year, employment has decreased by 153,200 persons.

Employment

The number of employed persons increased by 45,500 persons in the fourth quarter of 2015, to 18,094,200. The quarterly employment variation rate stands at 0.25%.

The employment rate (percentage of employed persons relative to the population aged 16 and over) stands at 47.01%, an increase of 0,11 points compared to the previous quarter. In annual variation, the rate rose by 1.40 points.



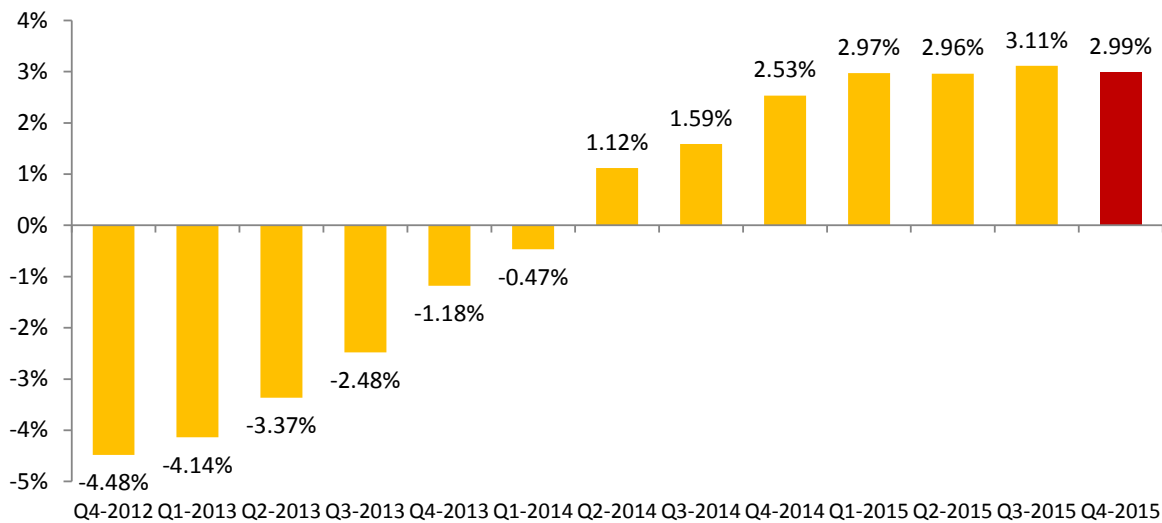
By gender, employment among women has increased this quarter (78,600 more employed women) and fallen among men (33,200 fewer).

By nationality, unemployment has grown by 35,700 persons among Spaniards and by 9,800 persons among foreign nationals.

By age, employment has grown in groups aged over 40, the highest increase being in the group of people aged over 54, with 92,000 more employed this quarter. - Employment in people under 40 has fallen. The most significant drop was observed in the group aged 20-24, with 53,700 fewer employed.

In the past twelve months, employment has increased by 525,100 people (305,100 men and 220,000 women). The interannual variation of employment is 2.99%, 0,12 of a point lower than that recorded the previous quarter.

Evolution of total number of employed persons, annual rate



This quarter, the number of employed persons has increased in *Agriculture* (70,200 more employed persons) and *Services* (54,900 more). In contrast, it has decreased in *Industry* (55,500 fewer occupied persons) and *Construction* (24,100 fewer).

In the last year, employment has risen in all sectors. In *Services* there are 421,500 more employed people; in *Agriculture* there are 50,800 more; in *Construction*, 28,100 more, and in *Industry*, 24,600 more.

Full-time employment dropped by 47,900 persons this quarter, whilst part-time employed persons increased by 93,300. The percentage of persons working part-time has increased by almost half a point to 15.72%.

In the last 12 months, full-time employment has increased by 501,700 and the number of part-time employees increased by 23,300.

This quarter, the number of wage-earners has increased by 39,900. Wage-earners with a permanent contract have increased by 103,400 persons, while wage-earners with temporary contracts have decreased by 63,600 persons. The temporary employment rate has fallen by almost half a point to 25.66%.

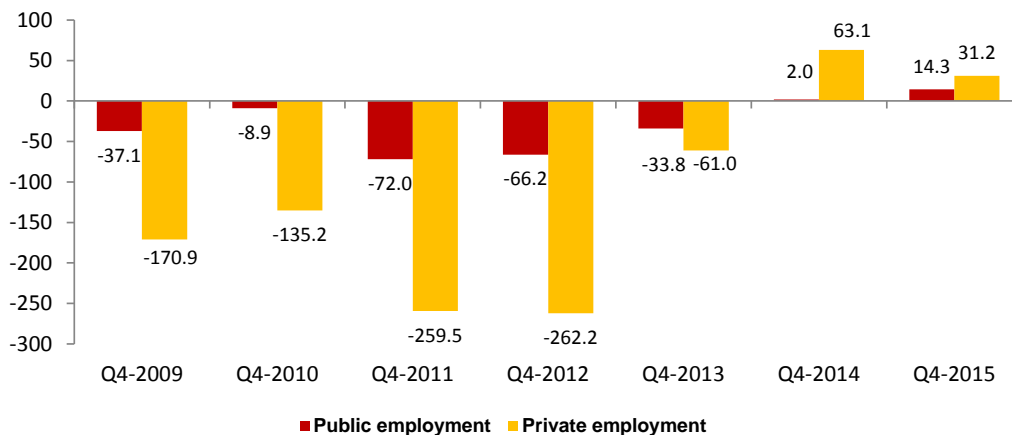
The number of self-employed persons has risen by 6,900 this quarter. The group of employers has grown by 37,100 while the self-employed, or entrepreneurs without employees, (18,100 fewer) and the family benefits group (14,000 fewer) have fallen.

In the last 12 months, the number of wage-earners has increased by 505,700. Permanent employment has increased by 170,600 people and temporary employment by 335,100.

This quarter, private employment¹ has grown by 31,200 persons, standing at 15,093,500. Public employment² has grown by 14,300 to 3,000,700.

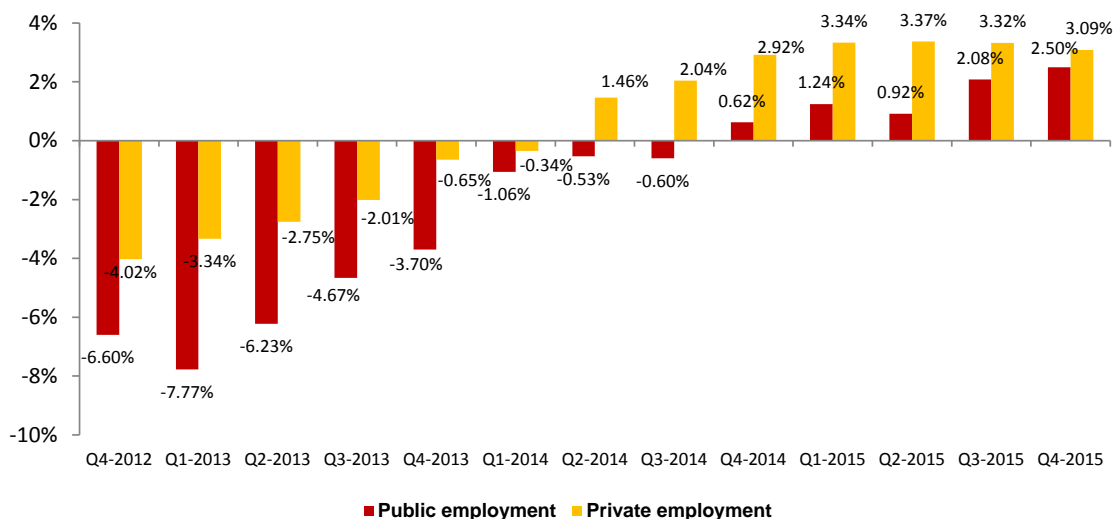
¹ Employment in the private sector includes: wage-earners from the private sector, employers, independent workers and businesspersons without wage earners, members of a cooperative, family assistance and other professional situations.

Quarter-on-quarter employment evolution by nature of the employer, in thousands (variation of the Q4 as compared to Q3 of the same year)



Employment in the private sector shows an annual variation of 3.09%, while public employment grew by 2.50%. In the past twelve months, employment has increased by 452,000 people in the private sector and 73,100 in the public sector.

Evolution of the occupation by nature of the employer, annual rate

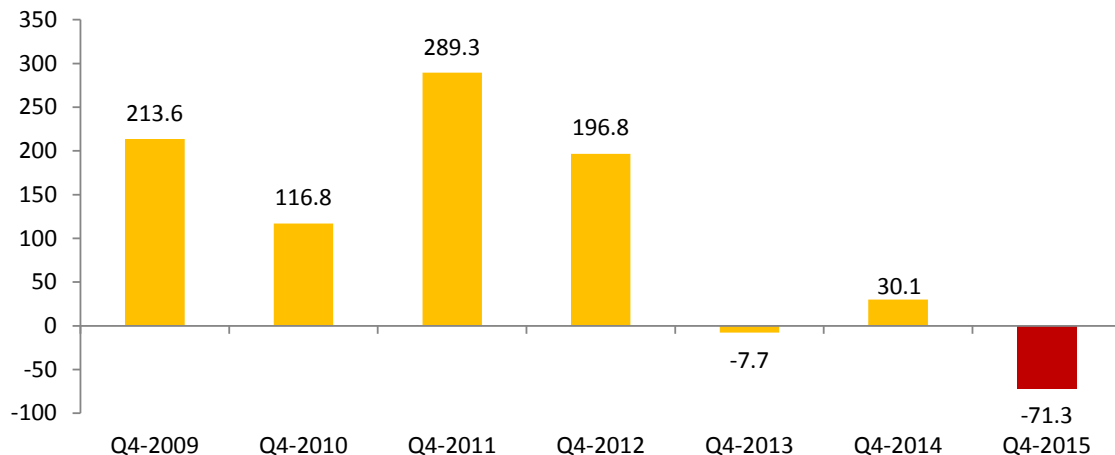


² Employment in the public sector includes all the wage earners of public enterprises and of the National and Regional Administrations, including both workers contributing to the SS and those attached to an Insurance society.

Unemployment and unemployment rate

Unemployment has fallen by 71,300 persons this quarter. The number of unemployed persons stands at 4,779,500 persons, 67,400 more than in the fourth quarter of 2010. In relative terms, the quarterly fall in unemployment is 1.47%.

Quarter-on-quarter unemployment evolution in thousands (variation of Q4 as compared to Q3 of the same year)



The unemployment rate fell by 0,29 of a point, standing at 20.90%, the lowest unemployment rate since the second quarter of 2011. In the last 12 months the unemployment rate has dropped by 2.81 points.

By gender, unemployment among men fell by 71,200, to 2,387,600. The number of unemployed women remains virtually unchanged this quarter, standing at 2,391,900. For the first time since the second quarter of 2008, the number of unemployed men is lower than that of women.

Male unemployment rate fell by 0.41 points and stood at 19.49%, while female unemployment fell by 0.17 points to 22.52%.

By age, the decline in unemployment this quarter was concentrated among those under 25 (79,100 fewer unemployed persons). However, unemployment has increased in the group of people aged 55 and older (13,900 more).

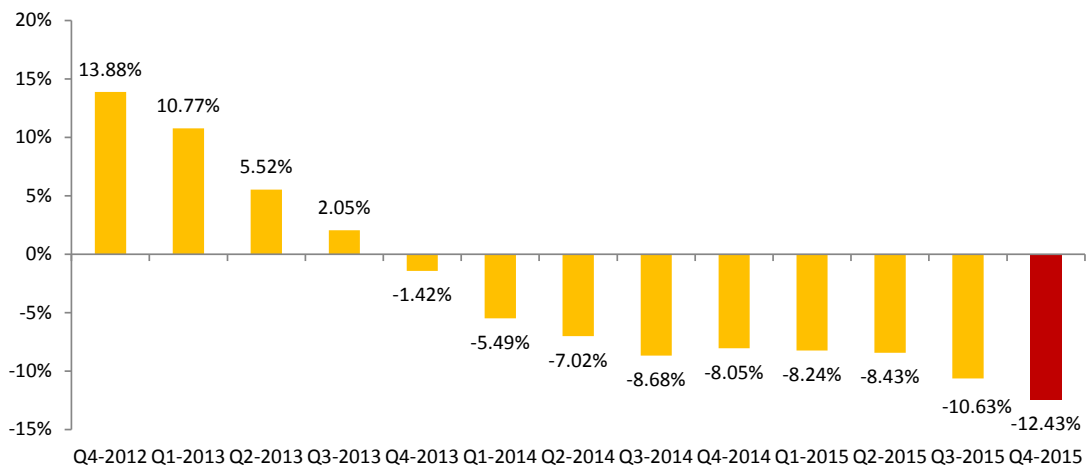
By nationality, unemployment has fallen by 53,700 persons among Spaniards and by 17,600 persons among foreign nationals. The unemployment rate of the Spanish population is 19.89%, while among the foreign population it is 28.38%, almost 8.5 points of difference.

Unemployment decreased this quarter in *Agriculture* (35,800 fewer unemployed persons). However, it increased in *Services* (64,700 more unemployed persons), *Construction* (11,700) and *Industry* (3,600).

Unemployment decreased by 17,400 persons among those who lost their job over a year ago and by 98,100 among those who are seeking their first job.

The annual variation of unemployment is -12.43%. The total number of unemployed has fallen by 678,200 people in a year, down by 436,100 in men and 242,100 among women. This is the largest drop in the number of unemployed in one year since the EAPS was established.

Evolution of the total number of unemployed persons, annual rate



By age, the annual reduction of unemployment affects all groups, but is concentrated among people aged 25-54 years (547,800 fewer unemployed) and those aged 20 to 24 years (113,100).

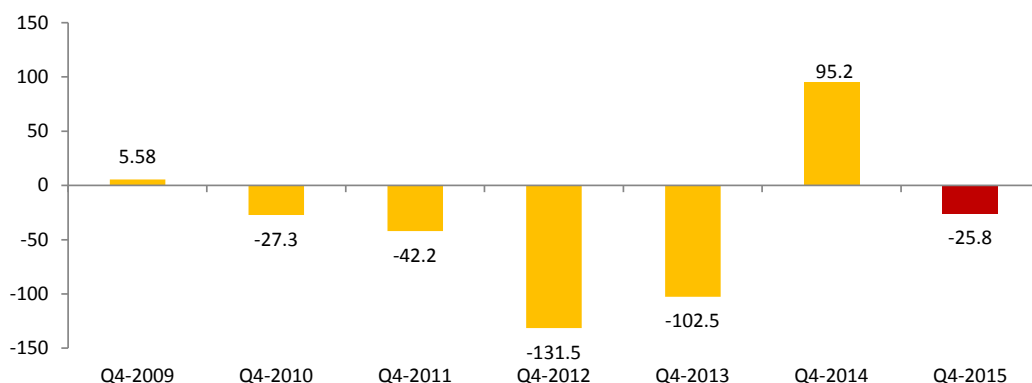
In the last 12 months, unemployment has fallen in all sectors. In *Services* there are 53,400 fewer unemployed people; in *Agriculture* there are 48,800 fewer; in *Construction*, 37,700 fewer and in *Industry*, 21,300 fewer. Meanwhile, the number of unemployed people who lost their jobs over a year ago has fallen by 425,400, while the unemployed looking for their first job have declined by 91,700.

Economically active population and activity rate

The economically active population decreased by 25,800 persons in the fourth quarter of 2015 and stands at 22,873,700.. This is mainly due to a drop in active men of 104,400 (the number of active women increased by 78,600).

By nationality, the number of economically active Spaniards decreased by 18,000, and that of foreign nationals by 7,800.

**Quarter-on-quarter activity evolution, in thousands
(variation of 4Q as compared with 3Q of the same year)**

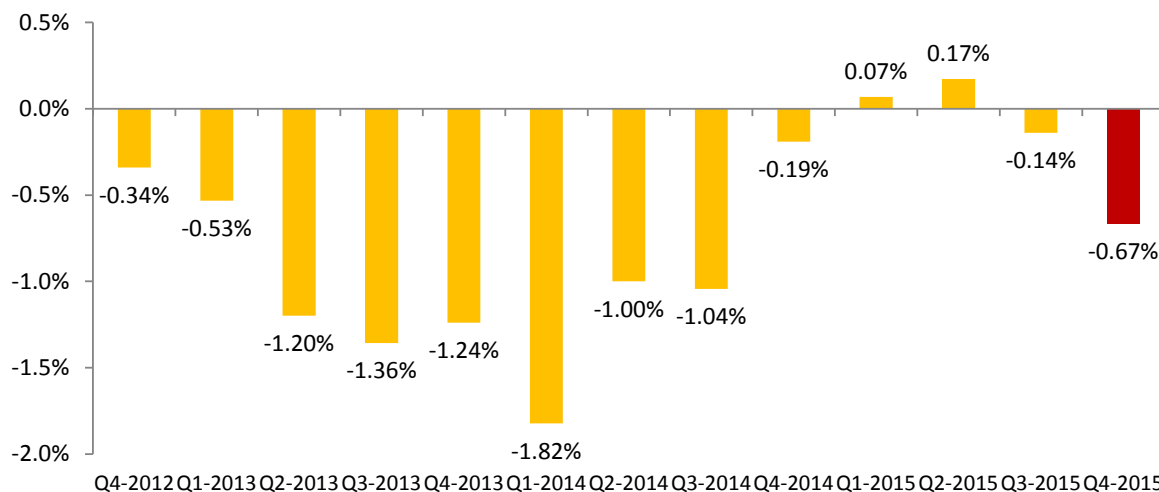


The rate of activity fell by 0,07 points to 59.43%. By gender, male unemployment fell by 0,54 points and stood at 65.37%, while female unemployment fell by 0,37 of a point to 53.79%.

The general activity rate among Spaniards fell by 0,05 of a point, standing at 57.95%. Foreign national activity fell by 0,31 of a point to 73.24%. The difference between the activity rates of Spaniards and foreign nationals exceeded 15 points, in favour of the latter; this circumstance is explained by the different age structures of both populations.

In annual terms, the workforce has been reduced by 153,200 people, while the population of working age (16-64 years) has decreased by 147,200. Annual variation of the economically active population was -0.67%, as compared with -0.14% for the previous quarter.

Evolution of the total number of economically active persons, annual rate



Households

The number of households increased by 17,000 in the third quarter of 2015, standing at 18,395,100. 4,667,500 are single-person households.

Households in which all economically active members are unemployed dropped by 16,300 this quarter, to a total of 1,556,600. 354,600 are single-person households.

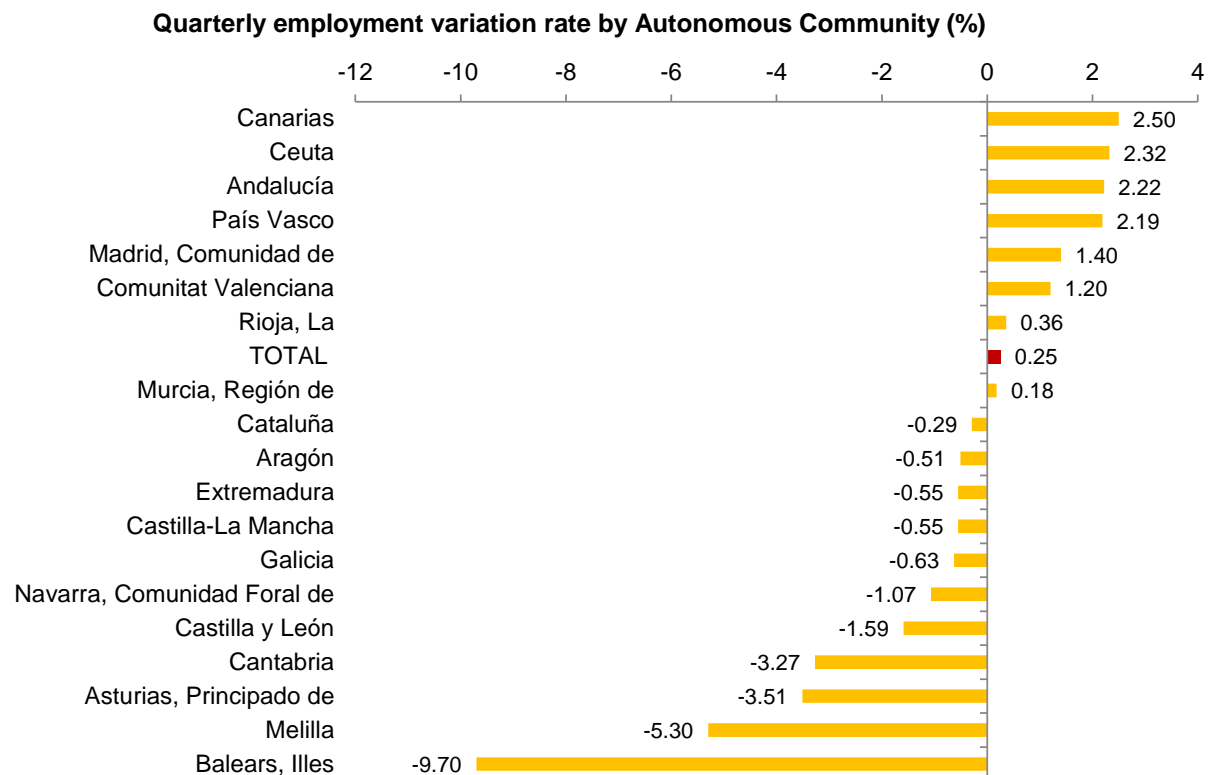
The number of households in which all of the economically active members were employed increased by 64,400, reaching 9,530,400. Of these, 1,830,200 homes are formed by a single person.

In annual comparison, the number of households with at least one economically active member in which everyone is unemployed has fallen by 209,700, while those who have active members in employment have grown by 420,300.

Results by Autonomous Community³

The greatest increases in employment this quarter were in Andalusia (61,300 more), Community of Madrid (39,400) and Community of Valencia (22,600). Conversely, the greatest decreases occurred in the Balearic Islands (53,800 fewer employed persons), Community of Valencia (15,300) and Andalusia (13,600).

In relative terms, the communities with the best quarterly employment trends are the Canary Islands (2.50%), Andalusia (2.22%) and the Basque Country (2.19%).

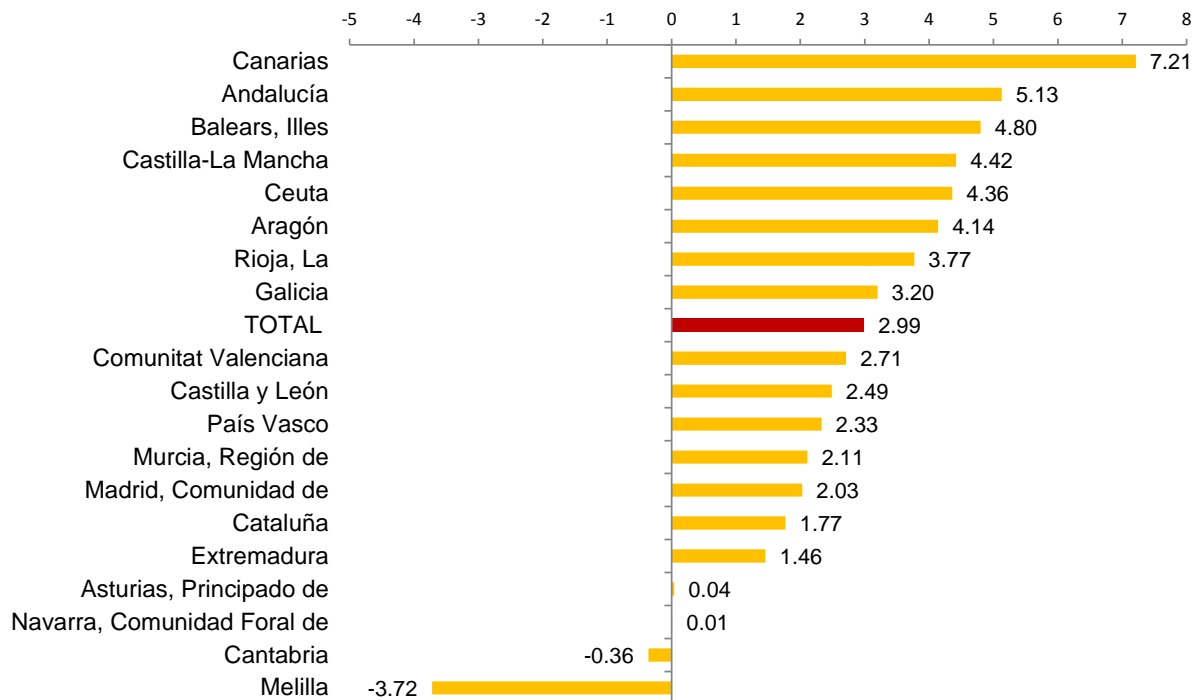


In annual variation, all regions except Cantabria, showed an increase in employment. The greatest were observed in Andalusia (137,500 more employed), Community of Madrid (56,700) and the Canary Islands (54,700).

In relative terms, the largest annual changes in employment occur in the Canary Islands (7.21%), Andalusia (5.13%) and the Balearic Islands (4.80%).

³ As with the rest of the EAPS data, employment results in this section are presented according to the Autonomous Community of residence of those persons interviewed in the survey, and not according to where their workplace is.

Annual variation rate of employment by Autonomous Community (%)



This quarter, the greatest decreases in unemployment were observed in Andalusia (83,600 fewer unemployed), Community of Valencia (22,300) and Canary Islands (20,100). Meanwhile, the largest increases in unemployment occurred in the Community of Madrid (17,500 more unemployed), Asturias (16,300) and the Balearic Islands (13,300).

In annual variation, unemployment fell overall in all regions. The greatest decreases were in Andalusia (197,400 fewer unemployed persons), Catalonia (249,100), Community of Valencia (87,900) and Community of Madrid (49,600).

Basque Country (12.89%), Navarre (13.53%) and La Rioja (13.97%) recorded the lowest unemployment rates this quarter. At the other extreme, Andalusia (29.83%), Extremadura (28.07%) and the Canary Islands (26.75%) show the highest.

The number of economically active persons this quarter increased in the Community of Madrid (56,900 more) and the Basque Country (11,900). The greatest decreases are recorded in the Balearic Islands (40,500 fewer) and in Andalusia (22,300).

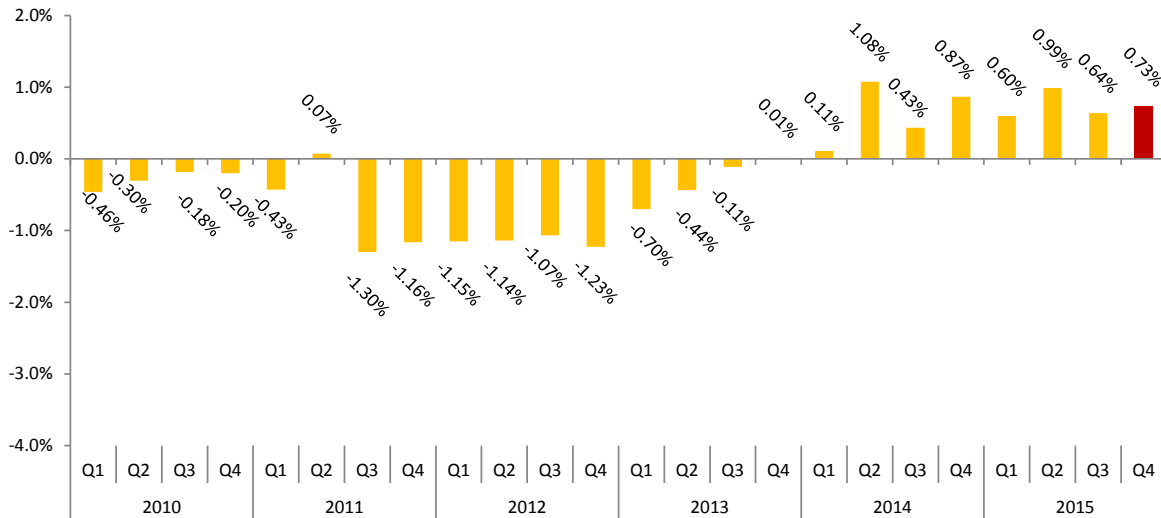
In the last 12 months, the Balearic Islands (14,400) and Canary Islands (9,600) showed the largest increases in the number of the active population. However, the greatest decreases occurred in Andalusia (59,900 fewer) and Catalonia (34,100).

This quarter, the activity rates fluctuated between 64.75% for the Community of Madrid and 51.80% for Principality of Asturias.

Seasonally adjusted series

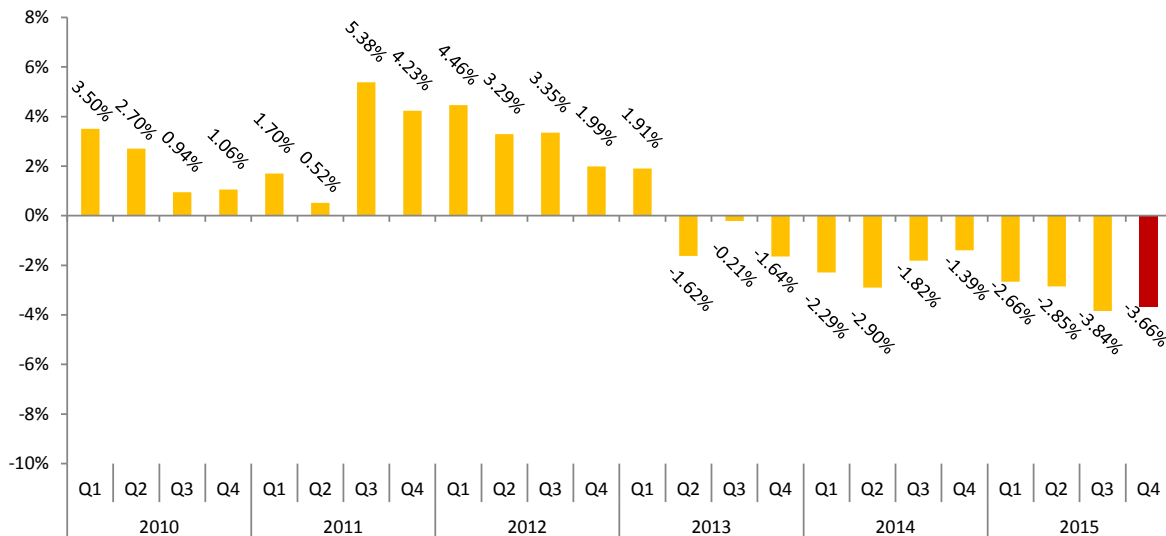
In the fourth quarter of 2015, the quarterly rate of employment in seasonally adjusted terms is 0.73%.

Deseasonalised evolution of employment, as a quarterly variation rate



A fall of 3.66% was observed in the seasonally adjusted unemployment results, maintaining the trend of reduction in unemployment of the previous 10 quarters.

Deseasonalised evolution of unemployment, as a quarterly variation rate



As discussed in the methodology used for seasonal adjustment, the seasonal adjustment model is maintained for a year. During the first quarters, the model re-identified, but the coefficients are recalculated quarterly; this means that the previous results are reviewed

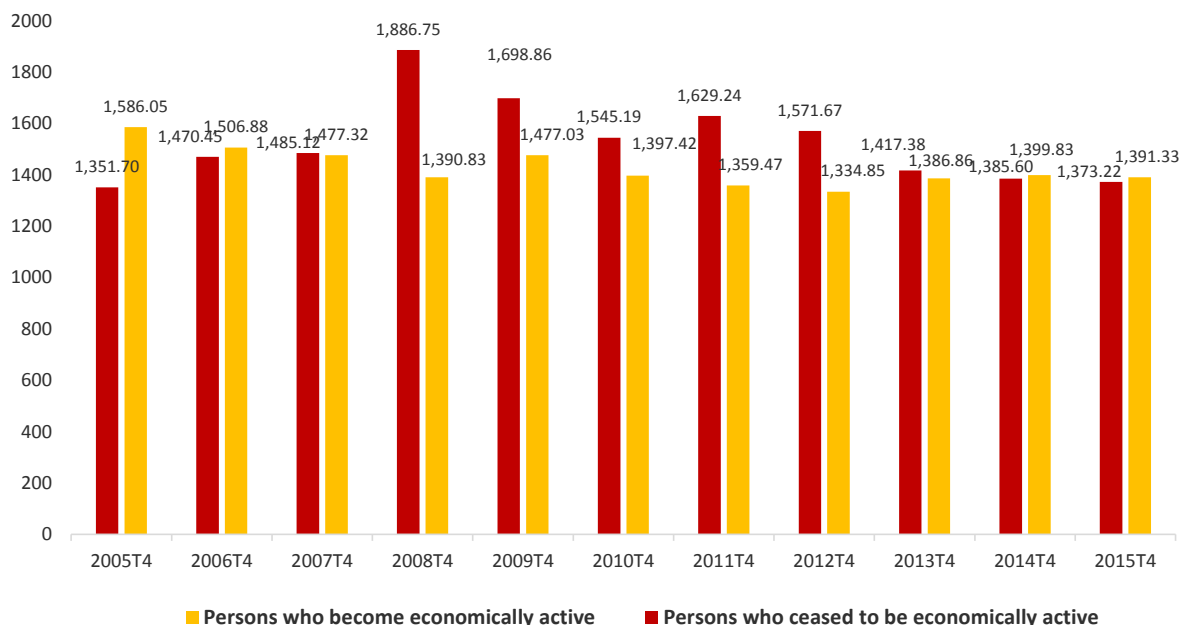
each quarter (either by re-identification or revision of coefficients) and therefore the the latest series available must always be used. The results of the seasonally adjusted series of employment and unemployment since 1990 and the description of the method used are found at http://www.ine.es/en/daco/daco42/daco4211/epa_desestacional_en.xls

Flows in absolute terms from the previous quarter⁴

The total inflow to employment in the fourth quarter of 2015 was 1,391,300 people, lower by 8,500 than in the same quarter last year.

However, the outflow from employment was 1,373,200 people, which is 12,400 less than in the same quarter of 2014.

Flows of persons (in thousands) who become economically active and who cease to be economically active each quarter

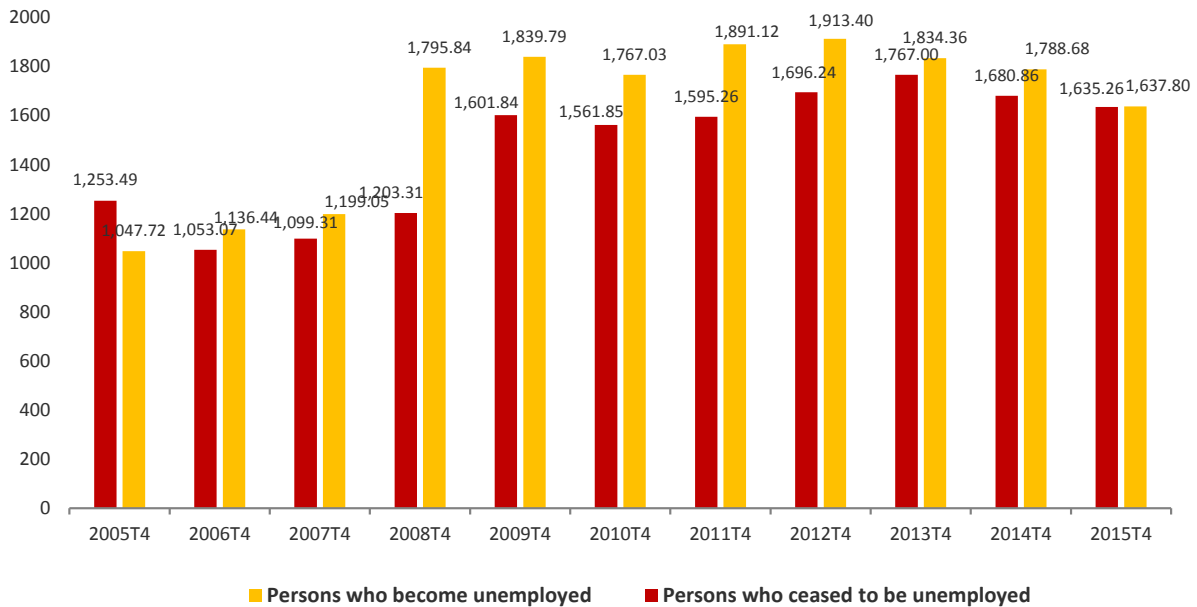


The number of people unemployed three months ago and those now not unemployed is 1,635,300, fewer by 45,600 persons than in the same period last year.

However, the inflow to unemployment was 1,637,800 people, which is 150,900 fewer than the 1,788,700 of the same quarter of 2014.

⁴ This section compiles the results of the *Economically Active Population Flow Statistics*. Due to the methodology used when preparing it, the results might not match the net balances of quarterly EAPS. The differences are caused by the "no data recorded" groups (persons turning 16 years old in the change between one quarter and the next one who did not live in Spain in the previous quarter)..

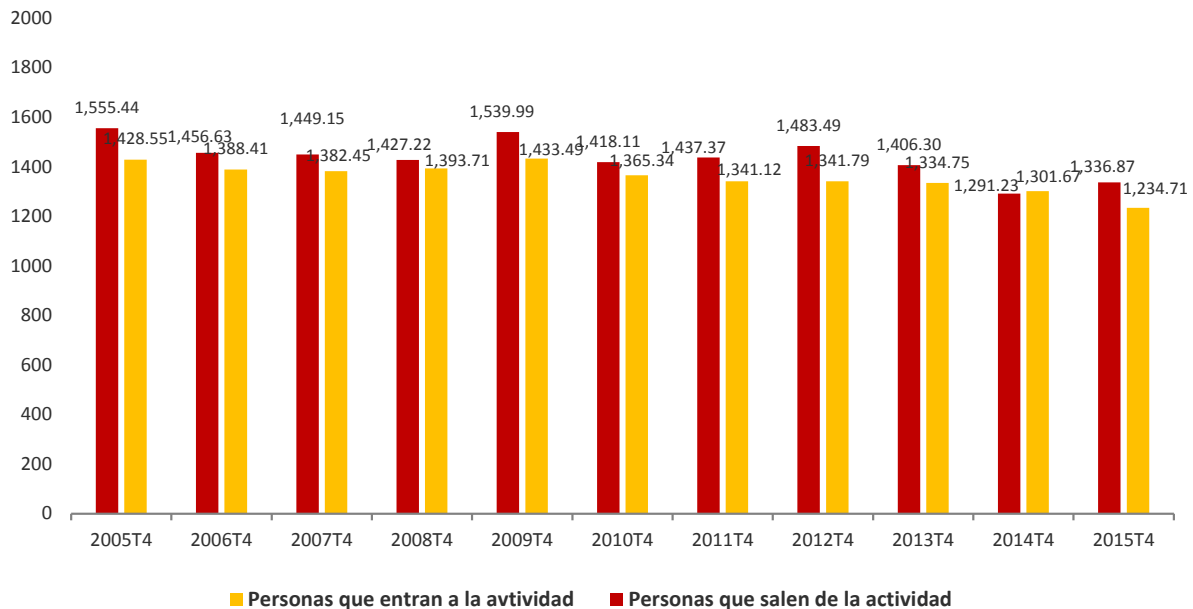
Flows of persons (in thousands) who become unemployed and who ceased to be unemployed each quarter



The inflow to activity this quarter was 1,234,700, compared to 1,301,700 in the same quarter of 2014. That is, 67,000 fewer people have become active.

Meanwhile, a total of 1,336,900 people have left the activity this quarter, compared to 1,291,200 who did so during the same period of 2014 (that is, 45,600 more).

Flows of persons (in thousands) who become economically active and who cease to be economically active each quarter



The outflow from employment to inactivity of people over 60 years is 80,300 people this quarter. This figure is lower by 13,300 than that observed in the fourth quarter of 2014 (which was 93,600).

People under 25 who left the active population during this quarter were 317,600, higher than the fourth quarter of 2014 (when the figure was 298,000).

The flow data on which these comments are based can be found in the annex to this press release http://www.ine.es/en/daco/daco42/daco4211/epafluj0415_en.xls

EAPS results by province

The provincial results summary of the EAPS may be accessed via the following link:

http://www.ine.es/en/daco/daco42/daco4211/epapro0415_en.pdf

All the provincial information from this survey may be accessed from the INEbase database:

<http://www.ine.es/dynt3/inebase/en/index.html?padre=996>

Methodological note

General features

The Economically Active Population Survey (EAPS) is a continuous sample-based study aimed at family dwellings, and which has been conducted since 1964. Its main objective is to obtain data on the labour force and on its different categories (employed, unemployed), as well as on the population outside of the labour force (inactive).

A stratified two stage sample has been used, in which first stage units are censal sections. The additional sample collected by the *Galician Statistics Institute* (IGE) has been incorporated as of the third quarter of 2009, using the same fieldwork system and identical methodology to that of the INE. Therefore, apart from the 3,588 census sections that have made up the sample for the whole of Spain since 2005, we must take into account the 234 additional sections in the Autonomous Community of Galicia. Since the third quarter of 2009, the EAPS sample is made up of 3,822 census sections from the more than 30,000 census sections into which Spain is divided. An average of 20 households are surveyed in each one. Thus, the sample size is approximately 65,000 dwellings, providing information on some 180,000 persons.

The data is collected via personal and telephone interviews. Interviews are evenly distributed throughout the 13 weeks of the quarter. Following Eurostat's guidelines⁵, the first week of the year is that which has the first Thursday of said year. The first quarter has 13 consecutive weeks which start in the first week of the year. The following 13 weeks are attributed to the second quarter, and so on.

Every five or six years it is necessary to introduce an extra week to the last quarter, so as to maintain 13-week periods close to the natural calendar. This is the case of the fourth quarter of 2015, which has 14 weeks.

Therefore, in 2015, the first quarter extends from 29 December 2014 until 29 March 2015; the second quarter, from 30 March to 28 June; the third quarter, from 29 June to 27 September; and the fourth one, from 28 September 2015 to 3 January 2016.

The information is carefully filtered and computer-processed. Results are obtained in the month following the end of the reference quarter for data and are published on the appointed date, as set out in INE's Short-term Statistics Availability Calendar.

Main definitions

(Economically) Active persons: persons aged 16 years old and over who, during the reference week (the week prior to that when the interview is held), supplied labour for the production of goods and services, or were available to do so and in conditions to incorporate themselves into said production. They are divided into employed and unemployed persons.

Employed persons: persons aged 16 years old and over who, during the reference week, worked for at least one hour in exchange for payment (salary, wage, business benefit, etc.) in cash or in kind. Persons who, being employed, had been temporarily absent from their job due to illness, holidays, etc., are also considered employed persons.

⁵ See Regulation (CE) No 377/2008 from the Commission

Employed persons are classified, considering their professional status, as non-wage earners (employers, businesspersons without wage earners and independent workers, cooperative members, family assistance) and wage earners (public or private).

Considering the length of the working day, employed persons are classified as full-time and part-time employed persons. The usual working week may not be shorter than 30 hours in the first case, nor exceed 35 hours in the second.

Wage earners are classified as permanent and temporary. For the latter, the end of their contract or work relationship is set by means of objective conditions, such as the expiry of a certain period of time, the completion of a specific task, etc.

A significant category within employment is that of **time-related underemployment**, defined in the 16th International Labour Statisticians Conference (Geneva, 1998). The EAPS considers persons suffering time-related underemployment as employed persons who would like to work more hours, who are available to work more hours and whose effective working hours in the reference week are less than the number of hours usually worked by employed persons working full-time in the same branch of activity as that in which the underemployed person develops his/her main job.

Unemployed persons: persons aged 16 years old and over who, during the reference week, were jobless, available for work, and actively looking for a job. Persons who might have already found a job and are waiting to start are also considered to be unemployed, provided that they meet the first two conditions.

According to European Commission Regulation 1897/2000, the following are considered to be active search methods, in the four weeks prior to the interview:

- Being in contact with a public employment office for the purpose of finding work, whatever part they play in the initiative (the renewal of registration due to purely administrative reasons does not constitute active planning).
- Being in contact with a private office (temporary employment agency, specialised hiring agency, etc.) with the objective of finding work.
- Having sent an application directly to employers.
- Having searched via personal relations and trade unions, etc.
- Having advertised oneself or responded to newspaper advertisements.
- Having studied job vacancies.
- Having taken part in a test, public exam or interview in the framework of a contracting procedure.
- Having looked for land, premises or material.
- Having taken steps to obtain permits, licences or financial resources.

(Economically) Inactive persons: persons aged 16 years old and over not included in any of the above categories.

Economically Active Population Flow Statistics (EAPFS): Quarterly changes in the labour situation

The Flows Statistics estimates the magnitude of all the movements that have taken place regarding employment, unemployment and economically inactive situations between the current and the previous quarter. In order to do so, a longitudinal monitoring of the persons interviewed in the EAPS over time is conducted.

Therefore, results are calculated from the common sample interviewed effectively in both periods, adding the sample of the persons who have turned 16 years of age during the three

months and the sample of the persons who have arrived in Spain from abroad during that same period.

The rotation established for the EAPS, which consists in renovating one-sixth of the households in the sample each quarter, implies that the maximum available sample to calculate the estimates based on the common sample is 5/6. Nevertheless, incidences regarding information collection in one quarter or the next cause a greater decrease in the proportion of the sample used to estimate flows. Therefore, if the complete sample of persons aged 16 and over of a quarter is around 140,000 persons, the sample that holds flow estimates is a bit more than 100,000.

Elevation factors are calculated in the same way as they are calculated for the quarterly EAPS, but adding an additional measure to the total amount of employed, unemployed and economically inactive persons by Autonomous Community, with the intention that both samples (flow and complete EAPS samples) offer the same results for the main magnitudes in the current quarter.

This procedure, however, does not allow adjusting EAPS flow estimates with the results of previous quarters. This information must always be used in relation with the results of the current quarter. Any accounting exercise involving the addition or subtraction of flow figures to/from the current quarter figures will have discrepancies with the results of the previous quarter, due to the weighting of the used results and the presence in the current quarter of population that was not considered in the previous one (persons arrived from abroad and persons who have turned 16 years of age in the last three months).

A full overview of the results regarding flows may be accessed via the following link:

http://www.ine.es/en/inebaseDYN/flujo30310/metoflujo_valores_absolutos_en.htm

Economically Active Population Survey Fourth Quarter 2015

National results

(Continues)

	Current quarter	Variation on previous quarter		Variation on same quarter, previous year	
		Difference	Percentage	Difference	Percentage
1. Population aged 16 years and over by sex and labour status					
BOTH SEXES					
Population aged 16 years and over	38,489.6	2.8	0.01	-33.8	-0.09
Active population	22,873.7	-25.8	-0.11	-153.2	-0.67
- Employed	18,094.2	45.5	0.25	525.1	2.99
- Unemployed	4,779.5	-71.3	-1.47	-678.2	-12.43
Inactive	15,615.9	28.7	0.18	119.4	0.77
Activity rate	59.43	-0.07	-	-0.35	-
Unemployment rate	20.90	-0.29	-	-2.81	-
Population aged 16 to 64 years	30,120.5	-32.0	-0.11	-147.2	-0.49
Activity rate (16-64)	75.38	-0.05	-	-0.23	-
Unemployment rate (16-64)	21.02	-0.28	-	-2.80	-
Employment rate (16-64)	59.53	0.18	-	1.94	-
MALES					
Population aged 16 years and over	18,741.3	-5.9	-0.03	-32.5	-0.17
Active population	12,250.9	-104.4	-0.84	-131.1	-1.06
- Employed	9,863.3	-33.2	-0.34	305.1	3.19
- Unemployed	2,387.6	-71.2	-2.90	-436.1	-15.44
Inactive	6,490.4	98.5	1.54	98.6	1.54
Activity rate	65.37	-0.54	-	-0.59	-
Unemployment rate	19.49	-0.41	-	-3.32	-
Population aged 16 to 64 years	15,091.8	-24.3	-0.16	-89.9	-0.59
Activity rate (16-64)	80.55	-0.63	-	-0.47	-
Unemployment rate (16-64)	19.61	-0.40	-	-3.31	-
Employment rate (16-64)	64.76	-0.18	-	2.30	-
FEMALES					
Population aged 16 years and over	19,748.3	8.7	0.04	-1.3	-0.01
Active population	10,622.8	78.6	0.74	-22.1	-0.21
- Employed	8,230.8	78.6	0.96	220.0	2.75
- Unemployed	2,391.9	-0.1	0.00	-242.1	-9.19
Inactive	9,125.6	-69.9	-0.76	20.8	0.23
Activity rate	53.79	0.37	-	-0.11	-
Unemployment rate	22.52	-0.17	-	-2.23	-
Population aged 16 to 64 years	15,028.7	-7.7	-0.05	-57.3	-0.38
Activity rate (16-64)	70.19	0.55	-	0.03	-
Unemployment rate (16-64)	22.65	-0.17	-	-2.22	-
Employment rate (16-64)	54.29	0.54	-	1.58	-

2. Spanish population⁽¹⁾ aged 16 years and over by labour status

SPANISH POPULATION AGED 16 YEARS AND OVER	34,774.9	-1.9	-0.01	31.4	0.09
Active population	20,152.9	-18.0	-0.09	-80.9	-0.40
- Employed	16,145.5	35.7	0.22	441.5	2.81
- Unemployed	4,007.5	-53.7	-1.32	-522.4	-11.53
Inactive	14,621.9	16.1	0.11	112.4	0.77
Activity rate	57.95	-0.05	-	-0.29	-
Unemployment rate	19.89	-0.25	-	-2.50	-

⁽¹⁾ including dual nationality

January 28th 2016

National results

(Continuation)

	Current quarter	Variation on previous quarter		Variation on same quarter, previous year	
		Difference	Percentage	Difference	Percentage

3. Foreign population aged 16 years and over by labour status

FOREIGN POPULATION AGED 16 YEARS AND OVER	3,714.8	4.8	0.13	-65.2	-1.72
Active population	2,720.7	-7.8	-0.29	-72.2	-2.59
- Employed	1,948.7	9.8	0.50	83.6	4.48
- Unemployed	772.0	-17.6	-2.23	-155.8	-16.79
Inactive	994.0	12.6	1.28	7.0	0.71
Activity rate	73.24	-0.31	-	-0.65	-
Unemployment rate	28.38	-0.56	-	-4.84	-

4. Employed by sex, age group and economic sector

BOTH SEXES	18,094.2	45.5	0.25	525.1	2.99
16 to 19 years	79.6	-26.2	-24.79	-2.2	-2.72
20 to 24 years	719.7	-53.7	-6.94	44.5	6.59
25 to 29 years	1,574.4	-10.0	-0.63	-34.6	-2.15
30 to 34 years	2,231.3	-44.7	-1.97	-61.6	-2.69
35 to 39 years	2,883.3	-11.9	-0.41	27.7	0.97
40 to 44 years	2,868.6	27.2	0.96	131.4	4.80
45 to 49 years	2,590.1	31.5	1.23	89.7	3.59
50 to 54 years	2,300.1	41.4	1.83	89.1	4.03
55 and over	2,847.1	92.0	3.34	241.2	9.25
MALES	9,863.3	-33.2	-0.34	305.1	3.19
16 to 19 years	50.7	-14.3	-21.95	0.8	1.56
20 to 24 years	387.8	-14.4	-3.59	36.3	10.32
25 to 29 years	790.8	-27.3	-3.34	-32.9	-3.99
30 to 34 years	1,190.8	-22.8	-1.88	-19.6	-1.62
35 to 39 years	1,567.1	-9.7	-0.61	15.5	1.00
40 to 44 years	1,587.6	-6.4	-0.40	68.9	4.53
45 to 49 years	1,431.4	17.9	1.26	52.6	3.82
50 to 54 years	1,273.2	20.5	1.63	63.7	5.27
55 and over	1,584.0	23.4	1.50	119.7	8.18
FEMALES	8,230.8	78.6	0.96	220.0	2.75
16 to 19 years	28.9	-12.0	-29.28	-3.0	-9.41
20 to 24 years	332.0	-39.2	-10.56	8.2	2.54
25 to 29 years	783.6	17.3	2.25	-1.7	-0.22
30 to 34 years	1,040.6	-21.9	-2.06	-42.0	-3.88
35 to 39 years	1,316.1	-2.3	-0.17	12.2	0.94
40 to 44 years	1,281.0	33.5	2.69	62.6	5.14
45 to 49 years	1,158.7	13.7	1.19	37.0	3.30
50 to 54 years	1,027.0	20.9	2.08	25.3	2.53
55 and over	1,263.1	68.6	5.74	121.4	10.64
TOTAL EMPLOYED	18,094.2	45.5	0.25	525.1	2.99
Agriculture	779.7	70.2	9.89	50.8	6.97
Industry	2,463.4	-55.5	-2.20	24.6	1.01
Construction	1,058.5	-24.1	-2.23	28.1	2.73
Services	13,792.5	54.9	0.40	421.5	3.15

National results

(Continuation)

	Current quarter	Variation on previous quarter		Variation on same quarter, previous year	
		Difference	Percentage	Difference	Percentage
5. Employed by professional status, type of contract, public / private sectors and working hours					
TOTAL EMPLOYED	18,094.2	45.5	0.25	525.1	2.99
BY PROFESSIONAL STATUS					
Self-employed workers	3,101.2	6.9	0.22	23.3	0.76
- Employers	922.6	37.1	4.19	29.7	3.33
- Independent workers	2,065.8	-18.1	-0.87	2.9	0.14
- Cooperatives members	24.0	1.9	8.45	-0.6	-2.58
- Family workers	88.8	-14.0	-13.65	-8.7	-8.95
Employees	14,988.8	39.9	0.27	505.7	3.49
- With a permanent job	11,142.6	103.4	0.94	170.6	1.56
- With a temporary job	3,846.2	-63.6	-1.63	335.1	9.54
Others	4.1	-1.3	-23.49	-3.9	-48.53
BY PUBLIC / PRIVATE SECTORS					
Employed by public sector	3,000.7	14.3	0.48	73.1	2.50
Employed by private sector	15,093.5	31.2	0.21	452.0	3.09
BY WORKING HOURS					
Full-time employed	15,250.5	-47.9	-0.31	501.7	3.40
Males	9,078.8	-50.7	-0.56	250.6	2.84
Females	6,171.7	2.8	0.05	251.1	4.24
Part-time employed	2,843.7	93.3	3.39	23.3	0.83
Males	784.6	17.6	2.29	54.5	7.46
Females	2,059.1	75.8	3.82	-31.1	-1.49

*) Private employment are all persons in employment other than public employees. Namely: private employees, employers, independent workers, cooperative members, family workers and other professional status.

6. Unemployed by sex, age group, and economic sector

BOTH SEXES	4,779.5	-71.3	-1.47	-678.2	-12.43
16 to 19 years	155.1	-30.8	-16.58	-13.1	-7.80
20 to 24 years	532.5	-48.3	-8.32	-113.1	-17.51
25 to 54 years	3,482.2	-6.0	-0.17	-547.8	-13.59
55 and over	609.8	13.9	2.33	-4.2	-0.69
MALES	2,387.6	-71.2	-2.90	-436.1	-15.44
16 to 19 years	84.4	-19.4	-18.66	-1.6	-1.81
20 to 24 years	280.0	-24.8	-8.14	-61.4	-17.99
25 to 54 years	1,684.1	-41.9	-2.43	-347.4	-17.10
55 and over	339.1	14.8	4.58	-25.7	-7.05
FEMALES	2,391.9	-0.1	0.00	-242.1	-9.19
16 to 19 years	70.7	-11.5	-13.94	-11.6	-14.05
20 to 24 years	252.5	-23.5	-8.52	-51.6	-16.98
25 to 54 years	1,798.0	35.9	2.04	-200.4	-10.03
55 and over	270.7	-1.0	-0.36	21.5	8.62
TOTAL UNEMPLOYED	4,779.5	-71.3	-1.47	-678.2	-12.43
Agriculture	222.6	-35.8	-13.85	-48.8	-17.99
Industry	174.4	3.6	2.09	-37.7	-17.77
Construction	207.6	11.7	5.99	-21.3	-9.29
Services	1,377.5	64.7	4.93	-53.4	-3.73
Lost their job more than 1 year ago	2,328.7	-17.4	-0.74	-425.4	-15.45
First job seekers	468.7	-98.1	-17.30	-91.7	-16.36

National results

(Conclusion)

	Current quarter	Variation on previous quarter		Variation on same quarter, previous year	
		Difference	Percentage	Difference	Percentage

7. Unemployment rate by relationship with the reference person

	Current quarter	Difference	Percentage	Difference	Percentage
TOTAL	20.90	-0.29	-	-2.81	-
Reference person	17.15	0.01	-	-2.13	-
Spouse or partner	17.77	0.22	-	-2.08	-
Child	36.60	-0.91	-	-5.00	-
Other relatives	29.47	0.09	-	-3.05	-
Unrelated persons	14.64	-2.72	-	-5.03	-

8. Household data

	Current quarter	Difference	Percentage	Difference	Percentage
TOTAL HOUSEHOLDS	18,395.1	17.0	0.09	33.1	0.18
Households with at least one active member	13,391.2	20.0	0.15	-49.5	-0.37
- All member employed	9,530.4	64.4	0.68	420.3	4.61
- All member unemployed	1,556.6	-16.3	-1.04	-209.7	-11.87
Households without any active population	5,003.9	-3.0	-0.06	82.6	1.68

Mobility according to activity in current and previous quarter

Classification in previous quarter	Classification in current quarter			
	Total	Employed	Unemployed	Inactive
BOTH SEXES				
Total	38,489.6	18,094.2	4,779.5	15,616.0
Employed	18,076.0	16,702.8	855.1	518.1
Unemployed	4,777.0	932.5	3,141.7	702.8
Inactive	15,513.8	455.6	779.1	14,279.1
Not classifiable	122.8	3.3	3.5	116.0
MALES				
Total	18,741.3	9,889.2	2,359.7	6,492.4
Employed	9,928.4	9,221.7	459.7	246.9
Unemployed	2,412.1	488.9	1,622.7	300.4
Inactive	6,327.7	175.8	275.5	5,876.4
Not classifiable	73.1	2.7	1.7	68.7
FEMALES				
Total	19,748.3	8,205.0	2,419.8	9,123.5
Employed	8,147.6	7,481.1	395.4	271.2
Unemployed	2,364.9	443.5	1,519.0	402.4
Inactive	9,186.1	279.7	503.6	8,402.7
Not classifiable	49.7	0.6	1.8	47.2

Grossing up factors of current quarter (forward analysis)

Results by Autonomous Communities and Cities

(Continues)

	Current quarter	Variation on previous quarter		Variation on same quarter, previous year	
		Difference	Percentage	Difference	Percentage
1. Population aged 16 years and over					
TOTAL	38,489.6	2.8	0.01	-33.8	-0.09
Andalucía	6,879.8	-3.5	-0.05	9.0	0.13
Aragón	1,095.8	-4.5	-0.41	-7.2	-0.65
Asturias, Principado de	909.6	-1.6	-0.18	-7.7	-0.84
Balears, Illes	939.3	0.6	0.06	6.4	0.69
Canarias	1,795.9	-2.4	-0.13	7.4	0.41
Cantabria	492.4	-1.0	-0.20	-2.6	-0.52
Castilla y León	2,087.7	-8.1	-0.39	-16.3	-0.78
Castilla-La Mancha	1,684.6	-4.3	-0.26	-7.0	-0.41
Cataluña	6,077.7	17.2	0.28	1.0	0.02
Comunitat Valenciana	4,098.6	-3.8	-0.09	-14.0	-0.34
Extremadura	910.6	-0.8	-0.09	-2.3	-0.25
Galicia	2,353.8	-3.5	-0.15	-10.7	-0.45
Madrid, Comunidad de	5,264.2	21.9	0.42	16.6	0.32
Murcia, Región de	1,182.4	0.0	0.00	0.2	0.02
Navarra, Comunidad Foral de	521.1	-0.3	-0.05	-0.6	-0.12
País Vasco	1,810.1	-2.2	-0.12	-5.2	-0.29
Rioja, La	259.1	-0.5	-0.20	-1.0	-0.40
Ceuta	64.8	-0.1	-0.12	0.0	-0.06
Melilla	62.1	-0.2	-0.26	0.3	0.52

2. Active population

TOTAL	22,873.7	-25.8	-0.11	-153.2	-0.67
Andalucía	4,017.7	-22.3	-0.55	-59.9	-1.47
Aragón	642.0	-6.1	-0.94	-5.2	-0.80
Asturias, Principado de	471.2	2.6	0.56	-2.5	-0.53
Balears, Illes	604.3	-40.5	-6.28	14.4	2.45
Canarias	1,110.4	-0.2	-0.02	9.6	0.87
Cantabria	274.6	-4.1	-1.48	-3.4	-1.22
Castilla y León	1,145.3	-4.7	-0.41	-10.0	-0.87
Castilla-La Mancha	988.6	-2.2	-0.22	-4.9	-0.49
Cataluña	3,770.5	0.0	0.00	-34.1	-0.90
Comunitat Valenciana	2,426.0	0.4	0.02	1.2	0.05
Extremadura	500.5	-5.9	-1.17	-6.2	-1.22
Galicia	1,255.2	-6.6	-0.53	-9.1	-0.72
Madrid, Comunidad de	3,408.5	56.9	1.70	7.1	0.21
Murcia, Región de	701.2	1.5	0.22	-20.9	-2.89
Navarra, Comunidad Foral de	305.7	-3.4	-1.11	-5.0	-1.60
País Vasco	1,027.4	11.9	1.17	-21.2	-2.02
Rioja, La	153.8	1.2	0.81	-0.1	-0.09
Ceuta	36.2	-2.9	-7.46	-3.2	-8.16
Melilla	34.6	-1.3	-3.55	0.3	0.75

* Data below 5000 are subject to strong variations, due to sampling error

Results by Autonomous Communities and Cities (Conclusion)

	Current quarter	Variation on previous quarter		Variation on same quarter, previous year	
		Difference	Percentage	Difference	Percentage
3. Employed					
TOTAL	18,094.2	45.5	0.25	525.1	2.99
Andalucía	2,819.4	61.3	2.22	137.5	5.13
Aragón	548.3	-2.8	-0.51	21.8	4.14
Asturias, Principado de	375.4	-13.6	-3.51	0.1	0.04
Balears, Illes	501.5	-53.8	-9.70	23.0	4.80
Canarias	813.3	19.9	2.50	54.7	7.21
Cantabria	226.0	-7.6	-3.27	-0.8	-0.36
Castilla y León	943.9	-15.3	-1.59	22.9	2.49
Castilla-La Mancha	741.7	-4.1	-0.55	31.4	4.42
Cataluña	3,101.9	-9.0	-0.29	53.8	1.77
Comunitat Valenciana	1,905.6	22.6	1.20	50.2	2.71
Extremadura	360.0	-2.0	-0.55	5.2	1.46
Galicia	1,032.5	-6.5	-0.63	32.1	3.20
Madrid, Comunidad de	2,845.7	39.4	1.40	56.7	2.03
Murcia, Región de	536.3	1.0	0.18	11.1	2.11
Navarra, Comunidad Foral de	264.4	-2.8	-1.07	0.0	0.01
País Vasco	894.9	19.2	2.19	20.4	2.33
Rioja, La	132.3	0.5	0.36	4.8	3.77
Ceuta	27.8	0.6	2.32	1.2	4.36
Melilla	23.3	-1.3	-5.30	-0.9	-3.72

4. Unemployed

TOTAL	4,779.5	-71.3	-1.47	-678.2	-12.43
Andalucía	1,198.3	-83.6	-6.52	-197.4	-14.15
Aragón	93.7	-3.3	-3.41	-27.0	-22.36
Asturias, Principado de	95.8	16.3	20.44	-2.7	-2.70
Balears, Illes	102.8	13.3	14.88	-8.5	-7.68
Canarias	297.1	-20.1	-6.34	-45.1	-13.18
Cantabria	48.6	3.5	7.80	-2.6	-5.01
Castilla y León	201.4	10.6	5.56	-33.0	-14.06
Castilla-La Mancha	246.8	1.9	0.77	-36.3	-12.82
Cataluña	668.6	9.0	1.37	-87.9	-11.62
Comunitat Valenciana	520.4	-22.3	-4.10	-49.0	-8.61
Extremadura	140.5	-3.9	-2.71	-11.3	-7.47
Galicia	222.7	-0.1	-0.05	-41.1	-15.58
Madrid, Comunidad de	562.8	17.5	3.21	-49.6	-8.09
Murcia, Región de	164.9	0.5	0.33	-32.0	-16.24
Navarra, Comunidad Foral de	41.4	-0.6	-1.37	-5.0	-10.76
País Vasco	132.5	-7.3	-5.22	-41.6	-23.91
Rioja, La	21.5	0.8	3.68	-4.9	-18.70
Ceuta	8.4	-3.5	-29.65	-4.4	(:)
Melilla	11.3	0.0	0.26	1.2	(:)

* Data below 5,000 are subject to strong variations, due to sampling error

(:) The variation percentages calculated from low figures with high sampling errors are not significant

Results by Autonomous Communities and Cities

(Absolute figures in thousands and rates in percentage)

5. Employed and unemployed by sex. Activity and unemployment rates

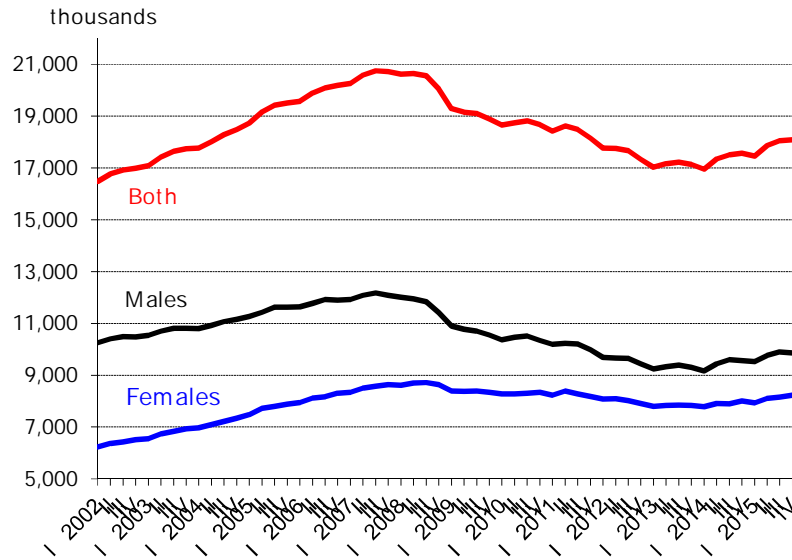
	Both sexes				Males				Females			
	Employed	Unemployed	Activity rate	Unem. rate	Employed	Unemployed	Activity rate	Unem. Rate	Employed	Unemployed	Activity rate	Unem. Rate
TOTAL	18,094.2	4,779.5	59.43	20.90	9,863.3	2,387.6	65.37	19.49	8,230.8	2,391.9	53.79	22.52
Andalucía	2,819.4	1,198.3	58.40	29.83	1,593.3	598.0	65.02	27.29	1,226.1	600.3	52.04	32.87
Aragón	548.3	93.7	58.59	14.60	308.9	41.2	64.88	11.77	239.3	52.5	52.48	18.00
Asturias, Principado de	375.4	95.8	51.80	20.33	190.2	50.6	55.80	21.03	185.2	45.1	48.18	19.59
Balears, Illes	501.5	102.8	64.34	17.02	266.5	55.7	69.20	17.28	235.0	47.2	59.56	16.72
Canarias	813.3	297.1	61.83	26.75	448.8	157.0	68.36	25.92	364.6	140.0	55.47	27.75
Cantabria	226.0	48.6	55.77	17.71	122.2	25.3	61.76	17.16	103.8	23.3	50.12	18.36
Castilla y León	943.9	201.4	54.86	17.58	532.7	93.7	60.90	14.96	411.2	107.7	49.00	20.75
Castilla-La Mancha	741.7	246.8	58.68	24.97	436.8	117.5	65.61	21.20	304.9	129.4	51.72	29.79
Cataluña	3,101.9	668.6	62.04	17.73	1,664.1	329.4	67.60	16.53	1,437.8	339.2	56.80	19.09
Comunitat Valenciana	1,905.6	520.4	59.19	21.45	1,040.5	265.4	65.05	20.33	865.1	254.9	53.56	22.76
Extremadura	360.0	140.5	54.96	28.07	215.0	66.7	62.47	23.68	145.1	73.8	47.60	33.71
Galicia	1,032.5	222.7	53.33	17.74	544.4	111.3	58.19	16.98	488.1	111.4	48.86	18.58
Madrid, Comunidad de	2,845.7	562.8	64.75	16.51	1,463.9	286.2	70.12	16.35	1,381.9	276.6	59.91	16.68
Murcia, Región de	536.3	164.9	59.31	23.51	313.4	81.2	67.08	20.57	222.9	83.7	51.60	27.30
Navarra, Comunidad	264.4	41.4	58.67	13.53	142.6	19.6	63.06	12.06	121.7	21.8	54.38	15.20
País Vasco	894.9	132.5	56.76	12.89	474.8	66.7	62.29	12.31	420.1	65.8	51.64	13.54
Rioja, La	132.3	21.5	59.38	13.97	72.3	12.0	66.34	14.22	60.0	9.5	52.67	13.68
Ceuta	27.8	8.4	55.89	23.25	18.0	3.9	67.23	17.98	9.8	4.5	44.41	31.34
Melilla	23.3	11.3	55.78	32.64	14.9	6.1	67.22	29.04	8.4	5.2	44.20	38.18

* Data below 5,000 are subject to strong variations, due to sampling errors

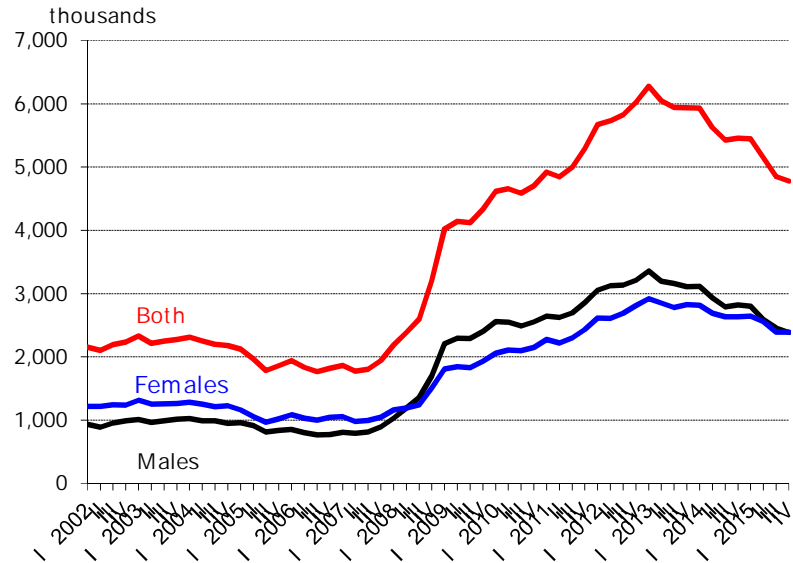
Employed and unemployed by sex

APS Fourth Quarter 2015

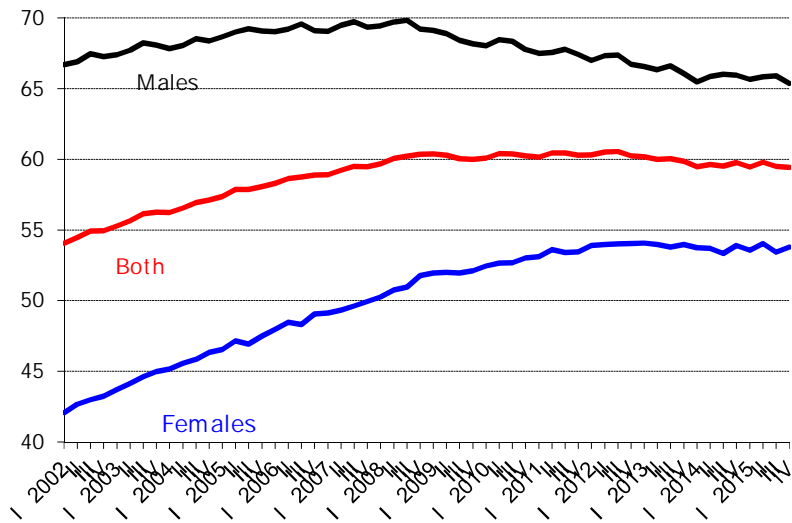
Employment



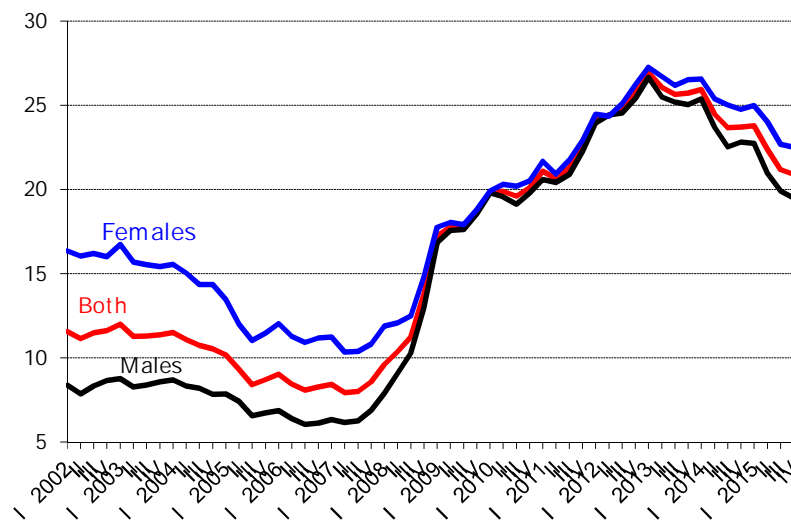
Unemployment



Activity rate



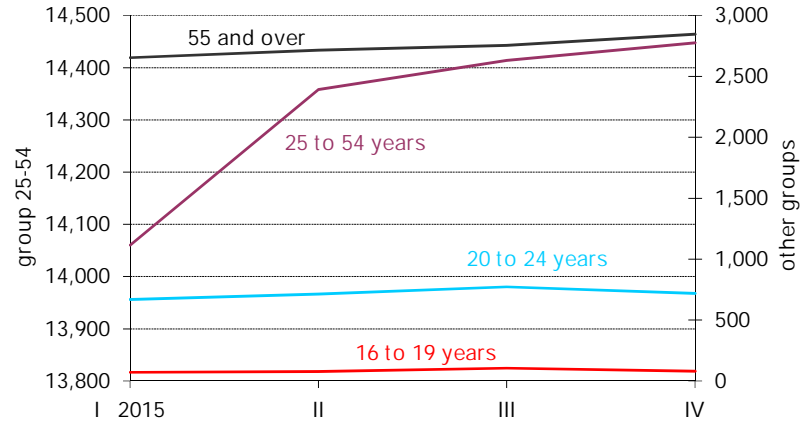
Unemployment rate



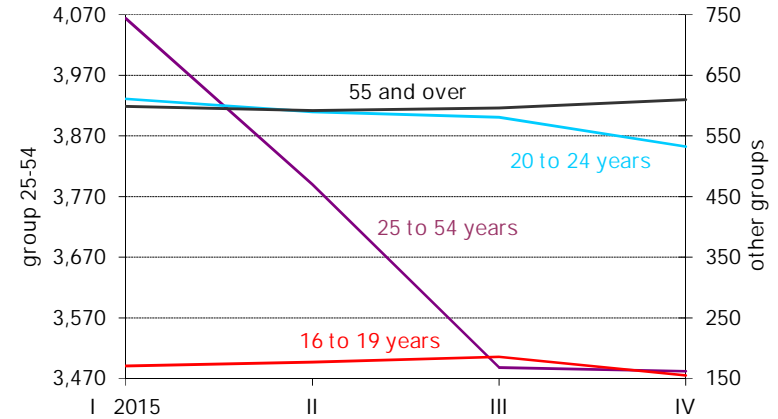
Employed and Unemployed by age

APS Fourth Quarter 2015

Employment (thousands)

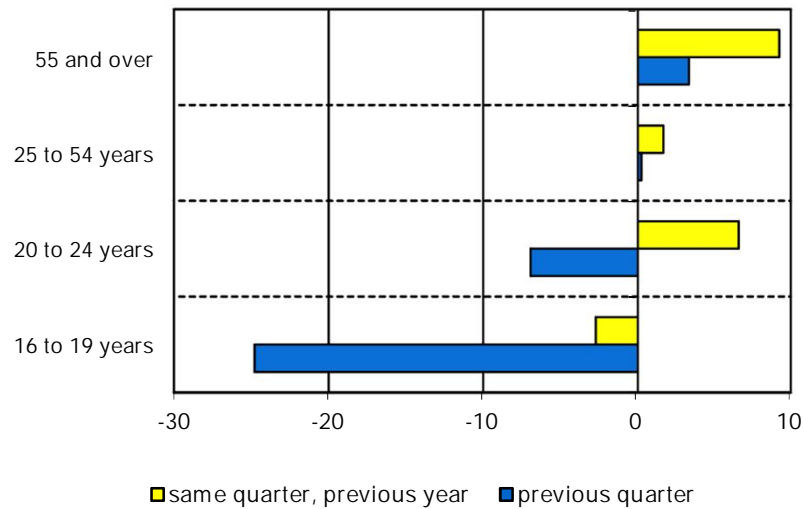


Unemployment (thousands)

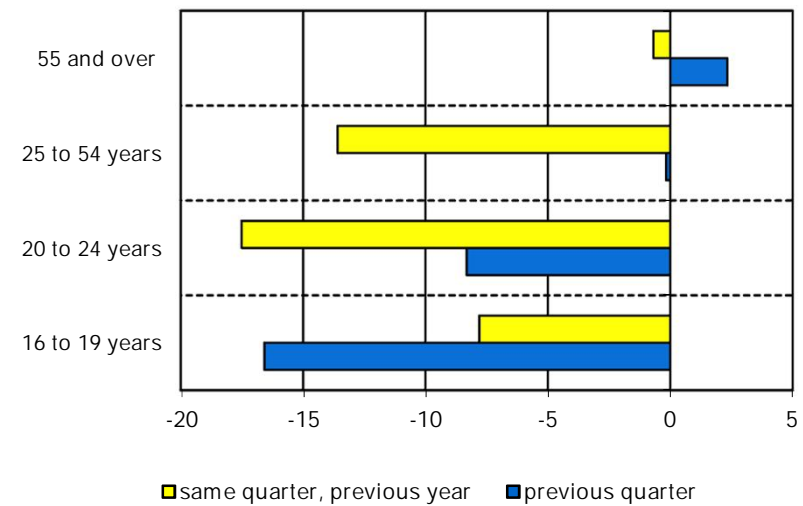


Variation percentages over the previous quarter and over the same quarter of the previous year

Employment

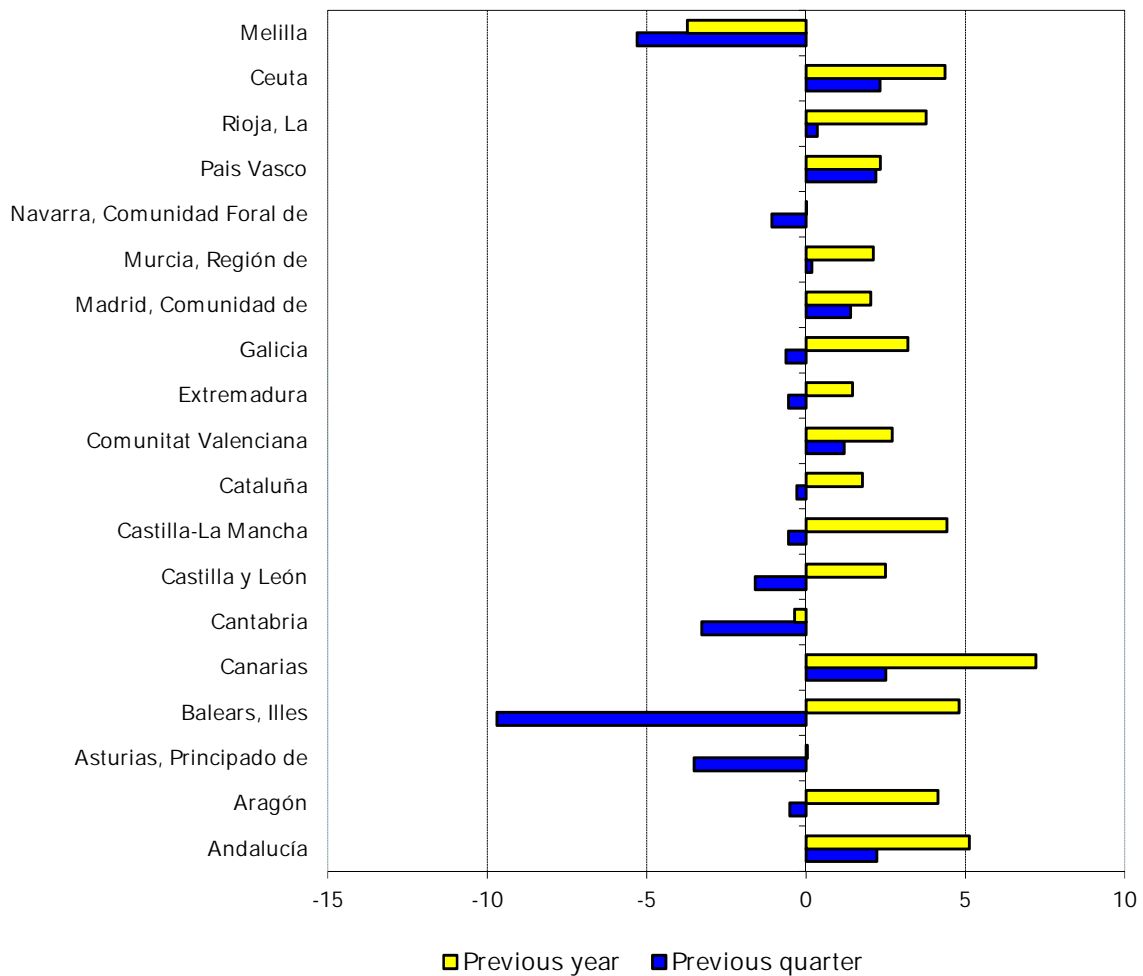


Unemployment



Employment variation percentages over the previous quarter and over the same quarter of the previous year

Fourth Quarter 2015



Unemployment rate (Spain = 20.90)

