

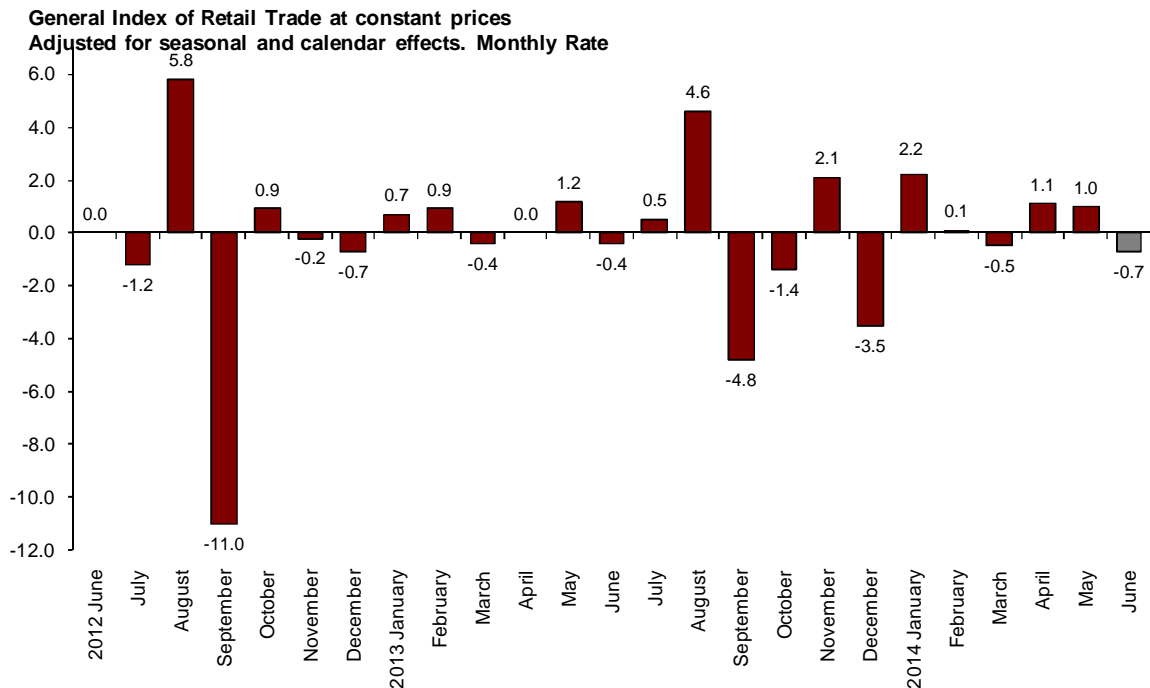
Retail Trade Indices (RTI). Base 2010
June 2014. *Provisional data*

The monthly change of the Retail Trade Index at constant prices stands at -0.7% after adjusting for seasonal and calendar effects

The annual rate of the General Retail Trade Index at constant prices stands at 0.2% in the series adjusted for seasonal and calendar effects and at 0.0% in the original series

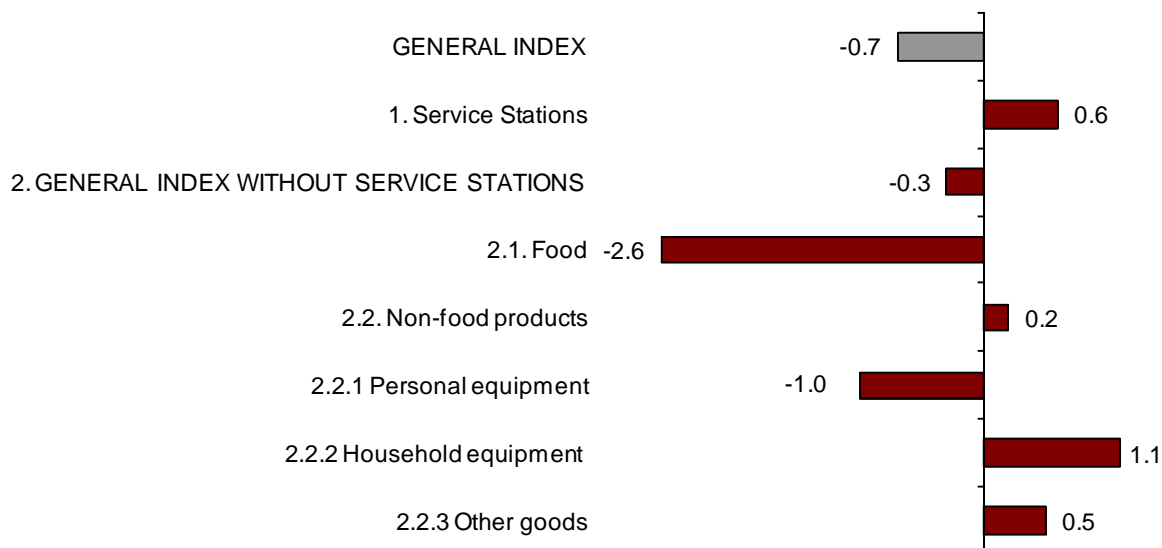
Monthly evolution of sales in Retail Trade

The monthly evolution of the General Retail Trade Index at constant prices between the months of June and May stood at -0.7% after adjusting for seasonal and calendar effects. This rate was one point and seven tenths lower than that registered in the previous month.



The general index, not including service stations, registered a monthly rate of -0.3% . By products, Food decreased by 2.6% and Non-food products increased by 0.2% . By type of product, Household equipment registered the greatest increase (1.1%).

**Sales Indices at constant prices: General and by type of products.
Adjusted for seasonal and calendar effects. Monthly rate**



By distribution classes, Single retail stores (0.7%) and Small chain stores (0.6%) registered positive rates, as compared with the previous month.

In turn, Large chain stores (-1.7%) and Department stores (-0.5%) registered negative rates, as compared with May.

**Sales indices at constant prices by distribution class
Adjusted for seasonal and calendar effects. Monthly rate**

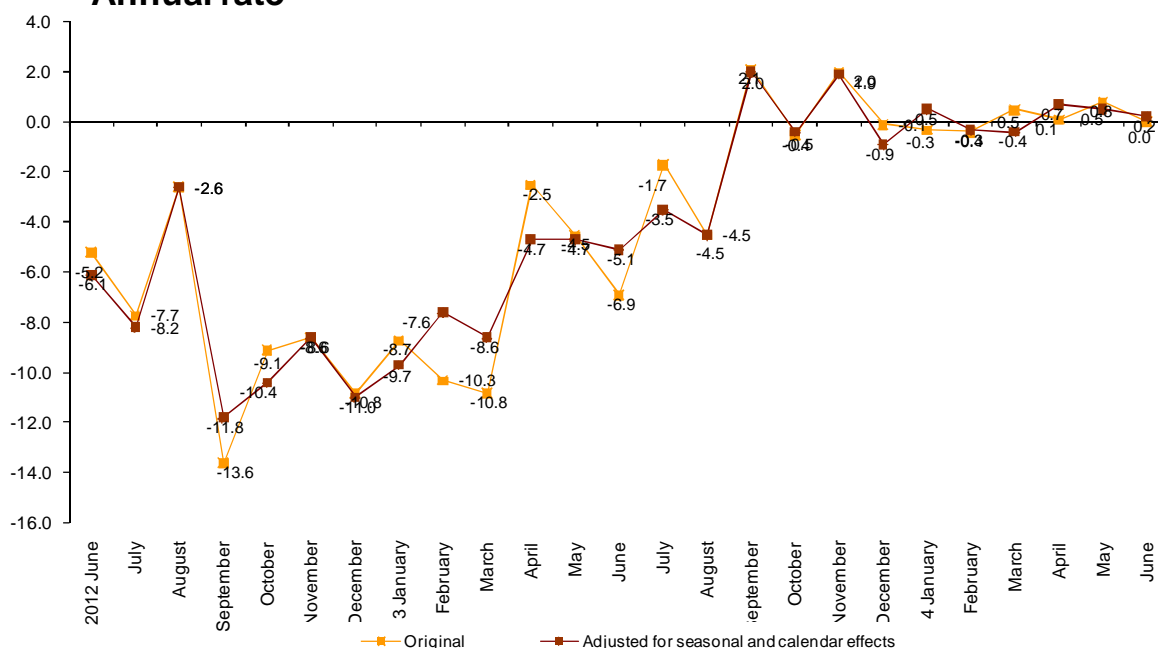


Annual evolution of sales in retail trade

In June, the General Retail Trade Index registered a variation of 0.2% as compared with the same month of 2013, after adjusting the seasonal and calendar effects. This annual rate was three tenths lower than that registered in May.

The original series of the RTI at constant prices remained stable as compared with June 2013 (0.0%). This rate stood eight tenths below that of May.

**Retail Trade General Index at constant prices
Annual rate**



The General Index, not including service stations, and after adjusting the seasonal and calendar effects, registered an annual change of 0.3% in June. Breaking down the sales by type of products, *Food* increased by 0.1% and *Non-food products* did so by 0.8%.

Retail trade sector sales. Annual rates at constant prices.

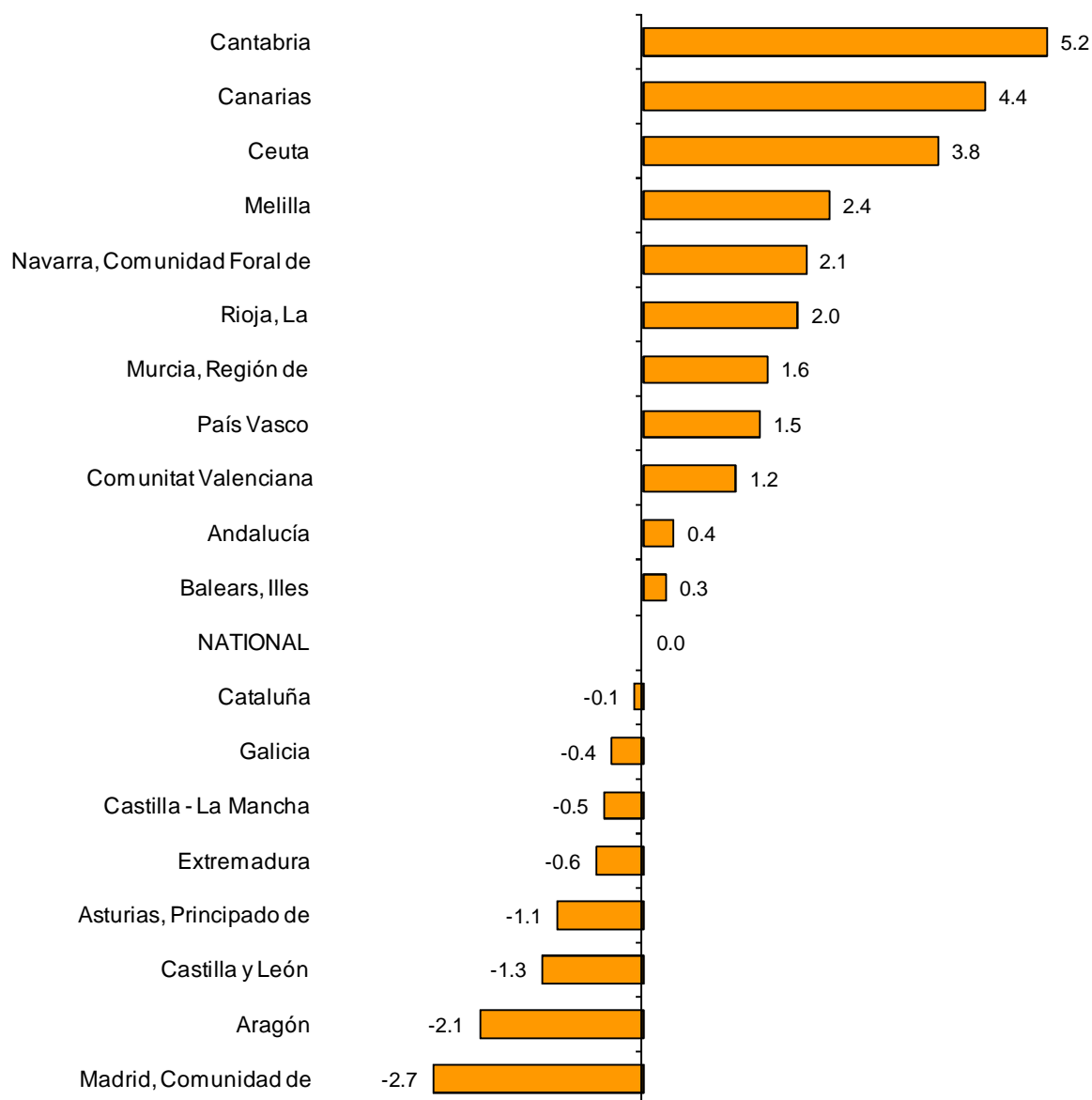
	Original Index	Seasonally adjusted index
	Annual rate (%)	Annual rate (%)
GENERAL INDEX	0.0	0.2
1. Service stations	1.7	1.7
2. GENERAL INDEX WITHOUT SERVICE STATIONS	0.0	0.3
2.1. Food	-0.2	0.1
2.2. Non-food products	0.8	0.8
2.2.1 Personal equipment	1.2	1.2
2.2.2 Household equipment	2.9	2.8
2.2.3 Other goods	-0.7	-0.4
DISTRIBUTION CLASS		
3. Single retail stores	-0.4	-0.2
4. Small chain stores	2.1	2.1
5. Large chain stores	-1.6	-1.2
6. Department stores	-0.5	0.3

Results by Autonomous Community. Annual variation rates in sales. Original series

In June, nine Autonomous Communities increased their sales, as compared with the same month of 2013. Cantabria (5.2%) and Canarias (4.4%) registered the greatest increases.

In turn, Comunidad de Madrid (-2.7%) and Aragón (-2.1%) registered the greatest decreases.

General Indices : National and by Autonomous City and Community. Annual sales rate



Evolution of employment

In June, the employment index in the Retail Trade sector registered a variation of 0.2%, as compared with the same month of 2013. This rate stood two tenths above that registered in May. In Service stations, the employment decreased by 1.1%.

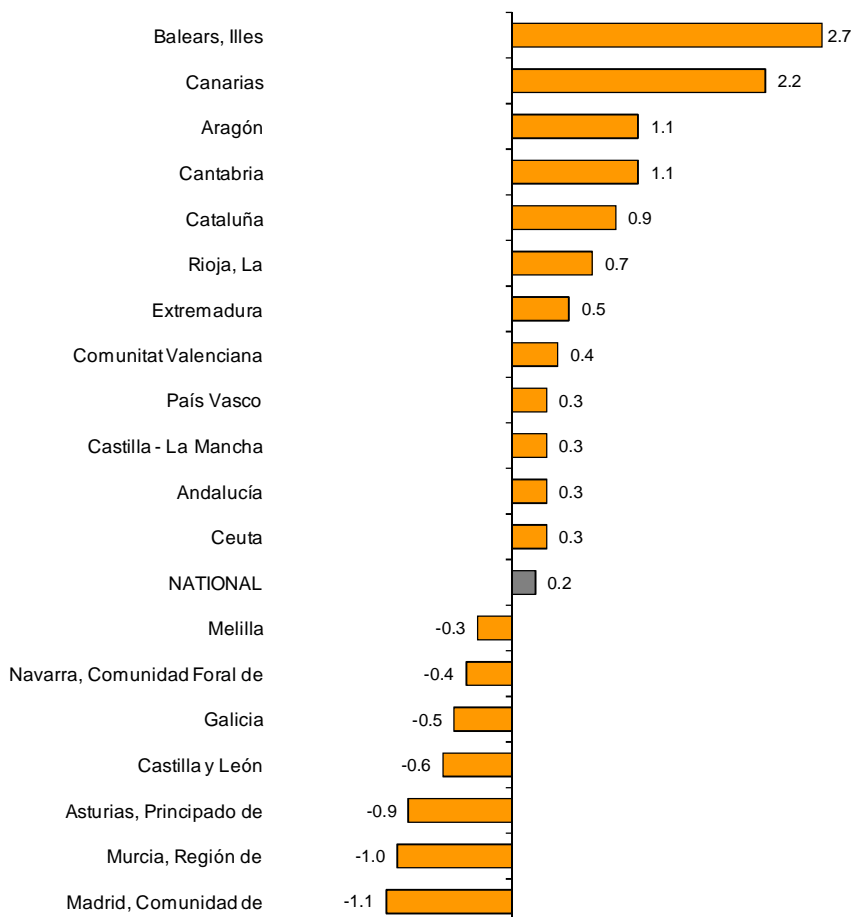
Employment Indices: General and by distribution class

	Index	Rate (%)		
		Monthly	Annual	Year-to-date average
GENERAL INDEX	96.1	1.0	0.2	-0.4
1. Service stations	94.0	1.7	-1.1	-2.4
2. GENERAL INDEX WITHOUT SERVICE STATIONS	96.1	0.9	0.3	-0.4
2.1. Single retail stores	98.2	0.5	0.9	0.3
2.2. Small chain stores	87.0	1.1	-1.5	-2.8
2.3. Large chain stores	101.9	1.1	0.0	-0.2
2.4. Department stores	92.3	2.9	1.3	0.1

Results by Autonomous Community. Annual variation rates in employment

In June, employment in retail trade increased its annual rate in 11 Autonomous Communities. Illes Balears (2.7%) registered the greatest increase, while Comunidad de Madrid registered the greatest decrease (-1.1%).

General Indices : National and by Autonomous City and Community. Employment Index. Annual Rate



Retail Trade Indices. Base 2010 June 2014

Provisional data

1. Sales indices: General, by products and by distribution class Adjusted for seasonal and calendar effects

	Index	Rate (%)		Year-to-date average	Deflated index	Rate (%)		Year-to-date average
		Monthly	Annual			Monthly	Annual	
GENERAL INDEX	92.0	-0.7	0.3	0.4	84.2	-0.7	0.2	0.2
1. Service stations	104.6	1.8	3.3	-1.4	83.6	0.6	1.7	-0.1
2. GENERAL INDEX WITHOUT SERVICE STATIONS	91.0	-0.3	0.4	0.7	84.6	-0.3	0.3	0.3
2.1. Food	100.3	-0.4	-0.4	0.5	91.1	-2.6	0.1	0.2
2.2. Non-food products	85.2	0.0	0.6	0.9	80.1	0.2	0.8	0.9
2.2.1 Personal equipment	88.6	-1.1	1.4	3.3	88.0	-1.0	1.2	3.1
2.2.2 Household equipment	80.7	1.1	2.0	1.4	78.7	1.1	2.8	1.9
2.2.3 Other goods	86.3	0.4	-0.6	-0.8	81.1	0.5	-0.4	-0.9
DISTRIBUTION CLASS								
3. Single retail stores	85.4	0.5	-0.3	-0.1	79.5	0.7	-0.2	-0.5
4. Small chain stores	88.3	0.4	2.0	1.2	82.2	0.6	2.1	0.8
5. Large chain stores	103.4	-1.9	-1.4	0.4	96.2	-1.7	-1.2	0.0
6. Department stores	87.6	-0.5	0.5	0.8	81.5	-0.5	0.3	0.3

2. Sales indices: General, by products and by distribution class. Adjusted for calendar effects

	Index	Rate (%)		Deflated index	Rate (%)	
		Annual	Year-to-date average		Annual	Year-to-date average
GENERAL INDEX	92.7	0.3	0.4	84.5	0.3	0.2
1. Service stations	105.5	3.3	-1.4	84.4	1.8	-0.1
2. GENERAL INDEX WITHOUT SERVICE STATIONS	91.5	0.1	0.7	84.8	0.3	0.3
2.1. Food	100.1	-0.9	0.6	91.8	0.0	0.2
2.2. Non-food products	85.8	0.9	0.8	79.9	1.1	0.7
2.2.1 Personal equipment	87.7	1.7	3.2	82.4	1.4	3.0
2.2.2 Household equipment	83.1	2.5	1.4	80.8	3.4	1.9
2.2.3 Other goods	86.5	-0.6	-1.1	80.4	-0.4	-1.2
DISTRIBUTION CLASS						
3. Single retail stores	88.1	-0.2	-0.1	81.7	0.0	-0.5
4. Small chain stores	89.4	2.3	1.3	82.9	2.5	0.8
5. Large chain stores	102.9	-1.4	0.4	95.3	-1.2	-0.1
6. Department stores	83.0	-0.5	0.9	77.0	-0.3	0.5

3. Sales indices: General, by products and by distribution class Original Series

	Index	Rate (%)		Deflated index	Rate (%)	
		Annual	Year-to-date average		Annual	Year-to-date average
GENERAL INDEX	91.4	0.0	0.3	83.3	0.0	0.1
1. Service stations	104.6	3.1	-1.4	83.7	1.7	-0.2
2. GENERAL INDEX WITHOUT SERVICE STATIONS	90.2	-0.2	0.7	83.6	0.0	0.2
2.1. Food	98.8	-1.2	0.6	90.8	-0.2	0.2
2.2. Non-food products	84.5	0.6	0.7	78.5	0.8	0.6
2.2.1 Personal equipment	86.6	1.4	3.0	81.3	1.2	2.8
2.2.2 Household equipment	81.3	2.0	1.3	79.1	2.9	1.8
2.2.3 Other goods	85.2	-0.9	-1.2	79.1	-0.7	-1.3
DISTRIBUTION CLASS						
2.1. Single retail stores	86.7	-0.5	-0.2	80.3	-0.4	-0.6
2.2. Small chain stores	87.8	2.0	1.1	81.3	2.1	0.7
2.3. Large chain stores	101.0	-1.8	0.3	93.6	-1.6	-0.2
2.4. Department stores	82.2	-0.7	0.8	76.2	-0.5	0.4
2.4.1. Food	88.6	-3.5	0.1	81.5	-2.5	-0.3
2.4.2. Non-food products	79.2	1.0	1.2	73.6	1.2	1.1

4. Sales indices: National and by Autonomous City and Community Original Series

	Index	Rate (%)		Deflated index	Rate (%)	
		Annual	Year-to-date average		Annual	Year-to-date average
NATIONAL	91.4	0.0	0.3	83.3	0.0	0.1
Andalucía	89.2	0.4	0.7	81.4	0.4	0.4
Aragón	87.2	-1.9	-3.0	79.5	-2.1	-3.1
Asturias, Principado de	84.9	-1.2	-0.9	77.4	-1.1	-0.8
Balears, Illes	116.8	0.7	3.0	106.3	0.3	2.5
Canarias	92.8	3.8	3.5	86.9	4.4	3.9
Cantabria	90.0	4.9	1.4	81.3	5.2	1.2
Castilla y León	88.8	-1.1	-2.2	80.0	-1.3	-2.6
Castilla - La Mancha	87.7	-0.8	0.0	79.5	-0.5	0.2
Cataluña	94.4	0.2	0.8	85.1	-0.1	0.3
Comunitat Valenciana	91.8	1.2	1.5	83.5	1.2	1.2
Extremadura	93.4	-1.1	-0.6	85.2	-0.6	-0.4
Galicia	89.1	-0.1	0.5	81.1	-0.4	0.1
Madrid, Comunidad de	89.9	-2.9	-1.8	82.7	-2.7	-1.8
Murcia, Región de	86.9	1.5	0.6	78.7	1.6	0.5
Navarra, Comunidad Foral de	97.7	1.6	0.8	89.3	2.1	1.3
País Vasco	91.4	1.9	1.7	83.7	1.5	1.3
Rioja, La	89.7	1.9	1.2	80.8	2.0	1.2
Ceuta	92.8	3.5	2.3	86.6	3.8	2.4
Melilla	94.9	1.8	0.3	90.1	2.4	1.0

5. Employment Indices: General and by distribution class

	Index	Rate (%)		
		Monthly	Annual	Year-to-date average
GENERAL INDEX	96.1	1.0	0.2	-0.4
1. Service stations	94.0	1.7	-1.1	-2.4
2. GENERAL INDEX WITHOUT SERVICE STATIONS	96.1	0.9	0.3	-0.4
2.1. Single retail stores	98.2	0.5	0.9	0.3
2.2. Small chain stores	87.0	1.1	-1.5	-2.8
2.3. Large chain stores	101.9	1.1	0.0	-0.2
2.4. Department stores	92.3	2.9	1.3	0.1

6. Employment Indices: National and by Autonomous City and Community

	Index	Rate (%)		
		Monthly	Annual	Year-to-date average
NATIONAL	96.1	1.0	0.2	-0.4
Andalucía	92.7	1.1	0.3	-0.6
Aragón	96.3	1.0	1.1	0.0
Asturias, Principado de	93.0	0.4	-0.9	-1.2
Balears, Illes	106.0	3.1	2.7	1.8
Canarias	100.6	0.5	2.2	2.2
Cantabria	97.2	1.0	1.1	0.5
Castilla y León	96.8	0.7	-0.6	-1.3
Castilla - La Mancha	97.0	0.6	0.3	-0.2
Cataluña	99.0	1.4	0.9	-0.1
Comunitat Valenciana	97.7	1.2	0.4	0.2
Extremadura	97.3	0.7	0.5	-0.5
Galicia	96.0	0.6	-0.5	-0.9
Madrid, Comunidad de	92.7	0.5	-1.1	-1.8
Murcia, Región de	91.9	0.8	-1.0	-2.2
Navarra, Comunidad Foral de	94.6	0.4	-0.4	-0.6
País Vasco	96.3	0.7	0.3	-0.1
Rioja, La	98.6	0.9	0.7	0.7
Ceuta	99.7	1.0	0.3	0.2
Melilla	99.7	0.5	-0.3	-0.3