

27 July 2016

**Retail Trade Indices (RTI). Base 2010**

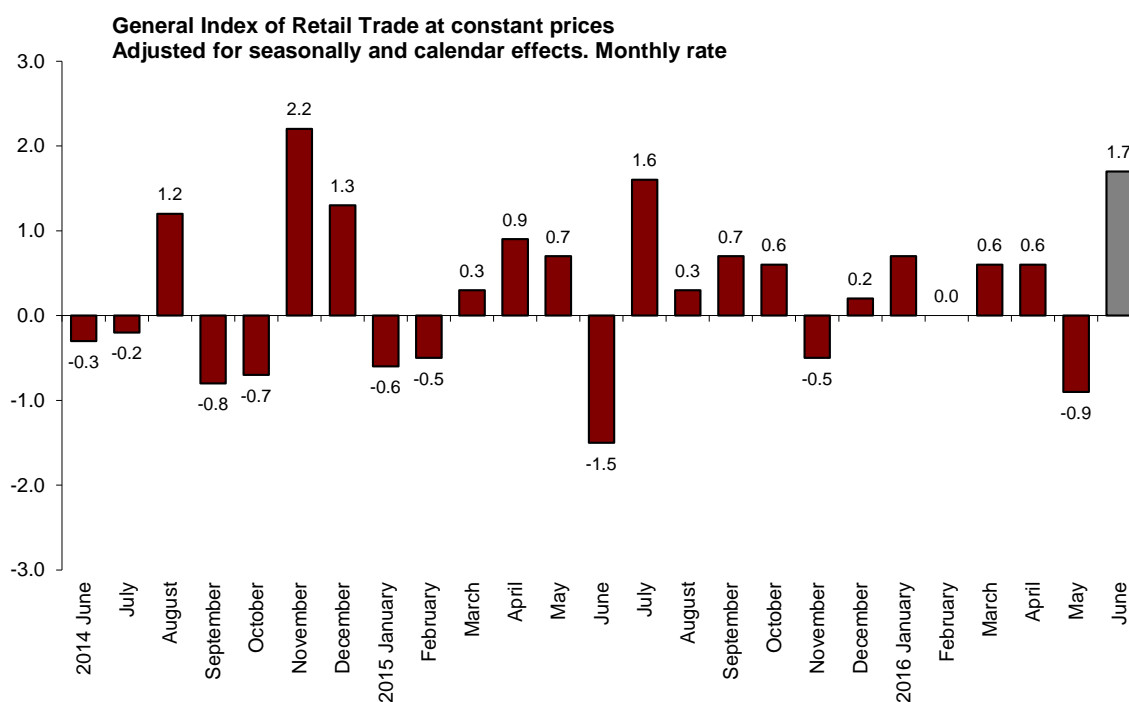
June 2016. *Provisional data*

**The monthly change of the Retail Trade Index at constant prices stands at 1.7% after adjusting for seasonal and calendar effects**

**The annual rate of the General Retail Trade Index at constant prices stands at 5.6% in the series adjusted for seasonal and calendar effects and at 6.0% in the original series**

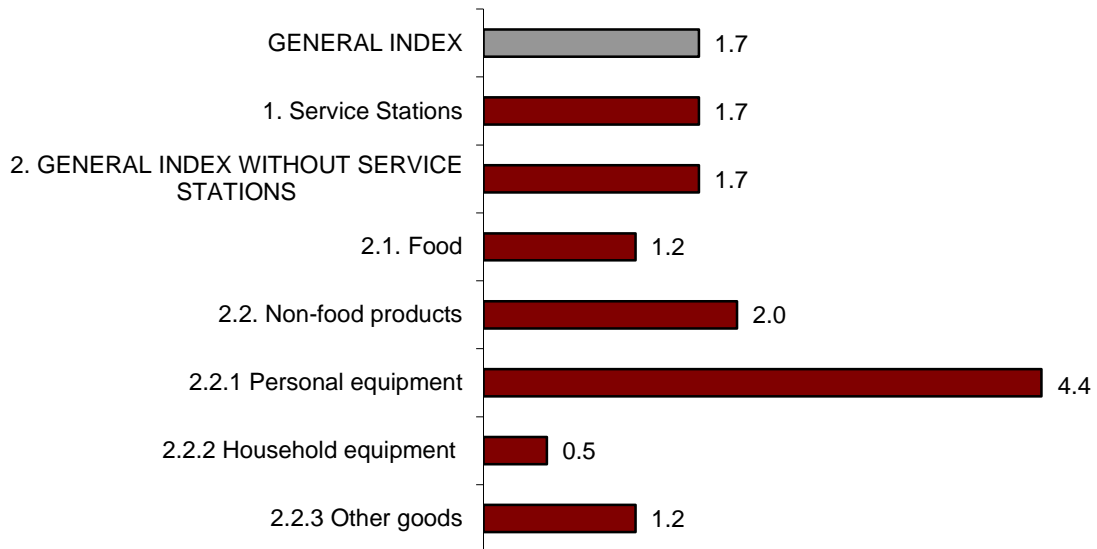
**Monthly evolution of sales in Retail Trade**

The monthly evolution of the General Retail Trade Index at constant prices between the months of June and May stood at 1.7% after adjusting for seasonal and calendar effects. This rate was 2.6 points higher than that registered in the previous month.



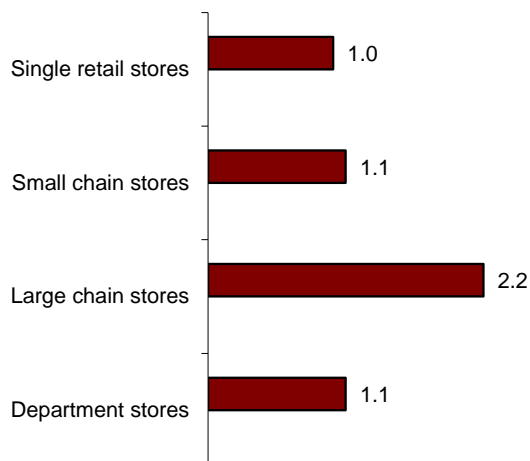
The general index, not including service stations, registered a monthly rate of 1.7%. By products, *Food* increased by 1.2% and *Non-food products* increased by 2.0%. By type of product, *Personal equipment* registered the greatest increase (4.4%).

**Sales Indices at constant prices: General and by type of products. Adjusted for seasonal and calendar effects. Monthly rate**



*Large chain stores* (2.2%) registered the greatest monthly rate, while *Single retail stores* (1.0%) registered the lowest monthly rate.

**Sales indices at constant prices by distribution class Adjusted for seasonal and calendar effects. Monthly rate**

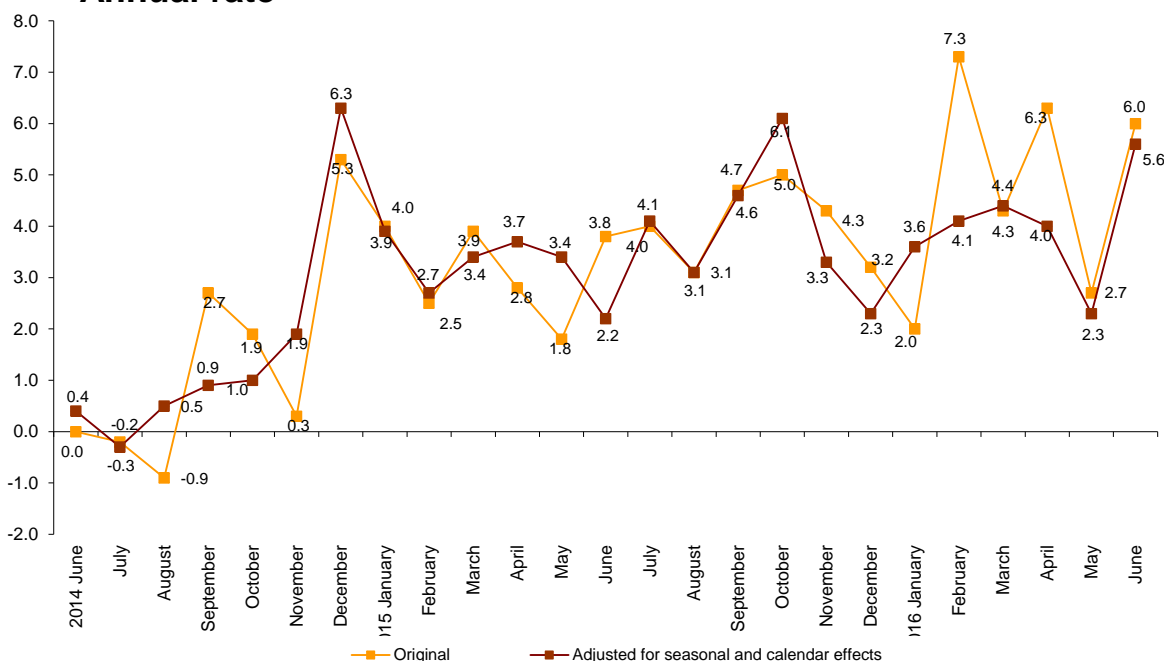


### Annual evolution of sales in retail trade

In June, the General Retail Trade Index registered a variation of 5.6% as compared to the same month of 2015, after adjusting for seasonal and calendar effects. This annual rate was 3.3 points higher than that registered in May.

The original series of the RTI at constant prices registered a 6.0% variation as compared to June 2015, standing 3.3 points above the rate of the previous month.

**Retail Trade General Index at constant prices**  
**Annual rate**



The General Index, not including service stations, and after adjusting for seasonal and calendar effects, registered an annual change of 5.4% in June. By type of product, Food increased by 1.3% and Non-food products increased by 8.4%.

### Retail trade sector sales. Annual rates at constant prices.

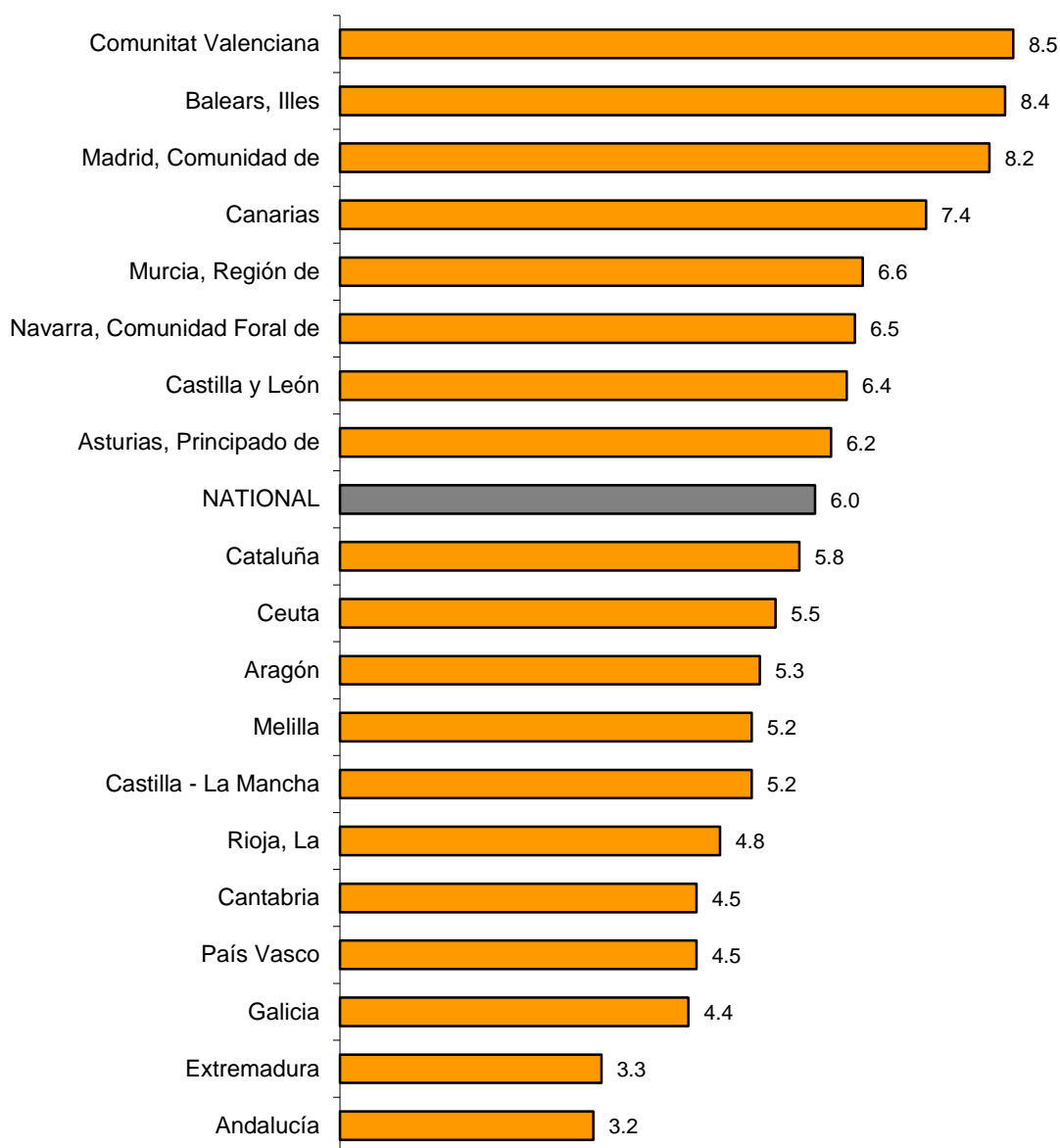
	Original Index	Seasonally adjusted index
	Annual rate (%)	Annual rate (%)
<b>GENERAL INDEX</b>	<b>6.0</b>	<b>5.6</b>
1. Service stations	2.7	2.3
2. GENERAL INDEX WITHOUT SERVICE STATIONS	5.8	5.4
2.1. Food	1.5	1.3
2.2. Non-food products	8.8	8.4
2.2.1 Personal equipment	7.7	6.4
2.2.2 Household equipment	5.5	5.2
2.2.3 Other goods	7.2	6.8
<b>DISTRIBUTION CLASS</b>		
3. Single retail stores	5.4	5.0
4. Small chain stores	3.8	3.5
5. Large chain stores	6.5	6.1
6. Department stores	6.4	4.7

## Results by Autonomous Community. Annual variation rates in sales. Original series

In June, all Autonomous Communities increased their sales as compared to the same month of 2015. The greatest increases were recorded in Comunitat Valenciana (8.5%), Illes Balears (8.4%) and Comunidad de Madrid (8.2%).

In turn, Andalucía (3.2%), Extremadura (3.3%) and Galicia (4.4%) registered the lowest increases.

### General Indices : National and by Autonomous City and Community Annual sales rate



## Evolution of employment

In June, the employment index in the retail trade sector registered a variation of 1.7%, as compared to the same month of 2015. This rate was three tenths higher than that registered in May. In *Service Stations*, employment increased by 1.0%.

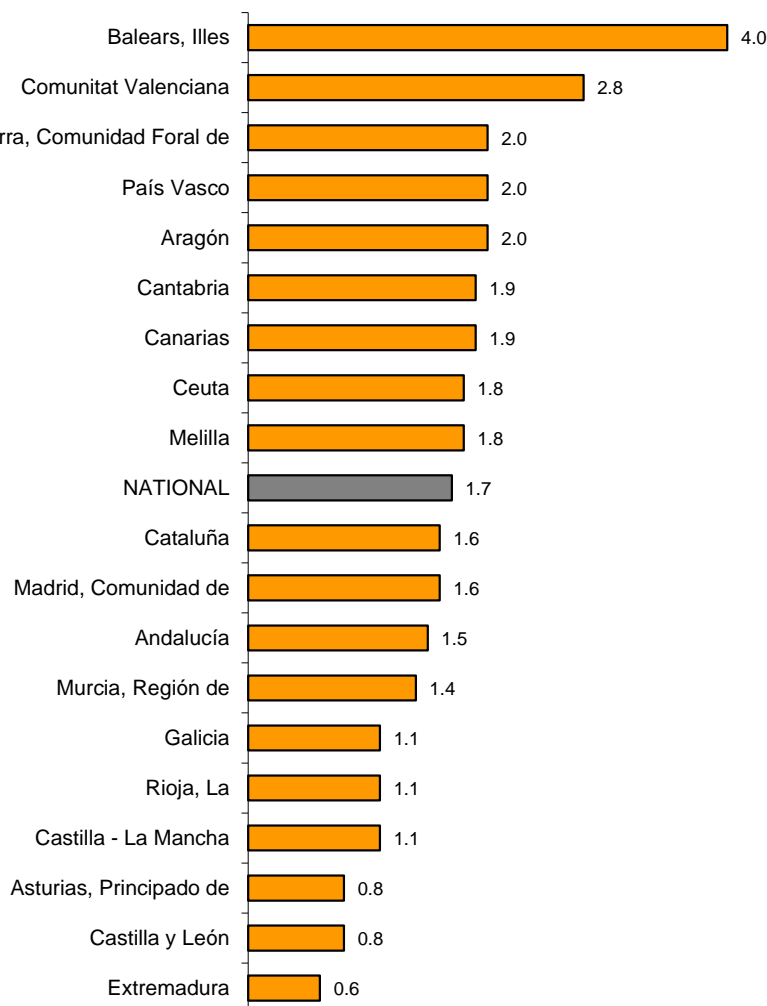
### Employment Indices: General and by distribution class

	Index	Rate (%)		
		Monthly	Annual	Year-to-date average
<b>GENERAL INDEX</b>	<b>98.8</b>	<b>1.5</b>	<b>1.7</b>	<b>1.6</b>
1. Service stations	95.0	1.9	1.0	0.8
2. GENERAL INDEX WITHOUT SERVICE STATIONS	98.9	1.4	1.7	1.6
2.1. Single retail stores	100.7	0.4	0.9	0.8
2.2. Small chain stores	87.0	1.1	0.9	1.1
2.3. Large chain stores	107.4	3.1	4.0	3.4
2.4. Department stores	96.0	3.4	1.8	2.1

### Results by Autonomous Community. Annual variation rates in employment

In June, employment in retail trade increased its annual rate in all Autonomous Communities. Illes Balears (4.0%) was the one that registered the greatest increase.

#### General Indices : National and by Autonomous City and Community. Employment Index. Annual Rate



## Retail Trade Indices. Base 2010 June 2016

Provisional data

27 July 2016

### 1. Sales indices: General, by products and by distribution class Adjusted for seasonal and calendar effects

	Index	Rate (%)		Year-to-date average	Deflated index	Rate (%)		Year-to-date average
		Monthly	Annual			Monthly	Annual	
<b>GENERAL INDEX</b>	<b>95.7</b>	<b>1.1</b>	<b>2.2</b>	<b>1.4</b>	<b>91.6</b>	<b>1.7</b>	<b>5.6</b>	<b>4.0</b>
1. Service stations	89.2	2.8	-8.5	-11.6	90.3	1.7	2.3	-0.2
2. GENERAL INDEX WITHOUT SERVICE STATIONS	96.9	1.9	4.2	2.7	91.4	1.7	5.4	3.8
2.1. Food	104.4	1.3	2.6	2.1	92.9	1.2	1.3	0.5
2.2. Non-food products	91.6	2.2	5.4	3.1	89.4	2.0	8.4	6.0
2.2.1 Personal equipment	95.7	4.7	7.1	2.7	94.4	4.4	6.4	2.2
2.2.2 Household equipment	87.7	0.5	5.4	5.4	85.7	0.5	5.2	5.2
2.2.3 Other goods	91.4	1.3	3.8	2.0	89.3	1.2	6.8	4.9
<b>DISTRIBUTION CLASS</b>								
3. Single retail stores	90.0	1.2	3.8	2.1	85.0	1.0	5.0	3.3
4. Small chain stores	90.5	1.2	2.2	1.0	85.5	1.1	3.5	2.2
5. Large chain stores	112.9	2.4	4.8	3.4	106.5	2.2	6.1	4.6
6. Department stores	94.4	1.2	3.3	2.5	89.1	1.1	4.7	3.7

### 2. Sales indices: General, by products and by distribution class. Adjusted for calendar effects

	Index	Rate (%)		Deflated index	Rate (%)	
		Annual	Year-to-date average		Annual	Year-to-date average
<b>GENERAL INDEX</b>	<b>96.8</b>	<b>3.3</b>	<b>1.4</b>	<b>91.1</b>	<b>5.8</b>	<b>4.0</b>
1. Service stations	93.4	-8.1	-11.9	91.3	2.5	-0.4
2. GENERAL INDEX WITHOUT SERVICE STATIONS	97.3	4.3	2.6	91.0	5.6	3.8
2.1. Food	104.9	2.6	2.1	93.5	1.3	0.5
2.2. Non-food products	92.1	5.6	3.0	88.3	8.5	6.1
2.2.1 Personal equipment	96.1	8.0	2.5	89.4	7.5	2.0
2.2.2 Household equipment	89.7	5.3	5.4	87.4	5.1	5.2
2.2.3 Other goods	91.2	4.1	1.8	87.4	7.0	4.9
<b>DISTRIBUTION CLASS</b>						
3. Single retail stores	92.3	3.9	2.1	86.4	5.1	3.3
4. Small chain stores	91.6	2.3	1.0	85.7	3.6	2.2
5. Large chain stores	112.4	4.9	3.4	105.2	6.2	4.6
6. Department stores	90.8	5.0	2.7	85.0	6.3	3.9

### 3. Sales indices: General, by products and by distribution class Original Series

	Index	Rate (%)		Deflated index	Rate (%)	
		Annual	Year-to-date average		Annual	Year-to-date average
<b>GENERAL INDEX</b>	<b>97.3</b>	<b>3.5</b>	<b>2.0</b>	<b>91.6</b>	<b>6.0</b>	<b>4.7</b>
1. Service stations	93.7	-7.9	-11.6	91.6	2.7	0.4
<b>2. GENERAL INDEX WITHOUT SERVICE STATIONS</b>	<b>97.8</b>	<b>4.6</b>	<b>3.2</b>	<b>91.5</b>	<b>5.8</b>	<b>4.5</b>
2.1. Food	105.4	2.8	2.8	93.9	1.5	1.2
2.2. Non-food products	92.7	5.9	3.6	88.8	8.8	6.7
2.2.1 Personal equipment	96.5	8.2	3.0	89.8	7.7	2.5
2.2.2 Household equipment	90.4	5.6	6.2	88.0	5.5	6.0
2.2.3 Other goods	91.7	4.4	2.4	87.9	7.2	5.5
<b>DISTRIBUTION CLASS</b>						
2.1. Single retail stores	92.9	4.1	2.7	86.9	5.4	4.0
2.2. Small chain stores	92.1	2.6	1.7	86.2	3.8	2.9
2.3. Large chain stores	113.1	5.2	4.2	105.9	6.5	5.5
2.4. Department stores	91.2	5.2	3.1	85.3	6.4	4.4
2.4.1. Food	91.2	0.1	1.0	81.2	-1.2	-0.5
2.4.2. Non-food products	91.0	7.7	4.2	87.2	10.6	7.3

### 4. Sales indices: National and by Autonomous City and Community Original Series

	Index	Rate (%)		Deflated index	Rate (%)	
		Annual	Year-to-date average		Annual	Year-to-date average
<b>NATIONAL</b>	<b>97.3</b>	<b>3.5</b>	<b>2.0</b>	<b>91.6</b>	<b>6.0</b>	<b>4.7</b>
Andalucía	92.7	0.8	0.7	87.3	3.2	3.3
Aragón	91.7	2.9	1.6	86.5	5.3	4.1
Asturias, Principado de	88.4	3.7	2.5	83.4	6.2	5.2
Balears, Illes	130.6	5.7	5.8	122.4	8.4	8.6
Canarias	100.4	4.9	3.8	97.5	7.4	6.6
Cantabria	96.8	2.1	1.7	90.5	4.5	4.2
Castilla y León	93.1	3.4	1.3	87.7	6.4	4.5
Castilla - La Mancha	91.8	2.3	0.2	86.8	5.2	3.3
Cataluña	100.1	3.8	1.2	92.5	5.8	3.5
Comunitat Valenciana	102.4	5.4	3.4	96.5	8.5	6.6
Extremadura	96.2	1.0	0.5	91.0	3.3	3.2
Galicia	94.2	1.8	1.8	88.8	4.4	4.6
Madrid, Comunidad de	97.3	5.3	3.1	92.5	8.2	5.9
Murcia, Región de	92.4	4.3	2.0	86.3	6.6	4.4
Navarra, Comunidad Foral de	102.0	4.4	2.1	96.4	6.5	4.5
País Vasco	93.8	2.4	1.7	88.1	4.5	3.8
Rioja, La	93.6	2.1	2.2	86.9	4.8	5.0
Ceuta	96.6	4.2	3.2	92.5	5.5	4.9
Melilla	98.3	3.8	2.6	95.6	5.2	4.8

## 5. Employment Indices: General and by distribution class

	Index	Rate (%)		
		Monthly	Annual	Year-to-date average
<b>GENERAL INDEX</b>	<b>98.8</b>	<b>1.5</b>	<b>1.7</b>	<b>1.6</b>
1. Service stations	95.0	1.9	1.0	0.8
2. GENERAL INDEX WITHOUT SERVICE STATIONS	98.9	1.4	1.7	1.6
2.1. Single retail stores	100.7	0.4	0.9	0.8
2.2. Small chain stores	87.0	1.1	0.9	1.1
2.3. Large chain stores	107.4	3.1	4.0	3.4
2.4. Department stores	96.0	3.4	1.8	2.1

## 6. Employment Indices: National and by Autonomous City and Community

	Index	Rate (%)		
		Monthly	Annual	Year-to-date average
<b>NATIONAL</b>	<b>98.8</b>	<b>1.5</b>	<b>1.7</b>	<b>1.6</b>
Andalucía	94.6	1.3	1.5	1.1
Aragón	96.7	1.2	2.0	1.6
Asturias, Principado de	93.7	1.2	0.8	0.6
Balears, Illes	111.7	2.9	4.0	3.8
Canarias	102.5	1.0	1.9	1.2
Cantabria	101.8	2.3	1.9	1.6
Castilla y León	98.6	1.1	0.8	1.0
Castilla - La Mancha	99.3	0.7	1.1	1.2
Cataluña	102.5	1.9	1.6	2.0
Comunitat Valenciana	101.9	1.7	2.8	2.6
Extremadura	99.8	1.1	0.6	0.8
Galicia	98.5	1.4	1.1	1.0
Madrid, Comunidad de	95.5	1.2	1.6	1.4
Murcia, Región de	95.3	2.1	1.4	0.8
Navarra, Comunidad Foral de	97.4	0.6	2.0	1.5
País Vasco	99.0	1.4	2.0	2.0
Rioja, La	100.5	1.7	1.1	1.7
Ceuta	101.8	1.8	1.8	1.4
Melilla	102.7	1.2	1.8	1.5