

Retail Trade Indices (RTI). Base 2010

November 2015. *Provisional data*

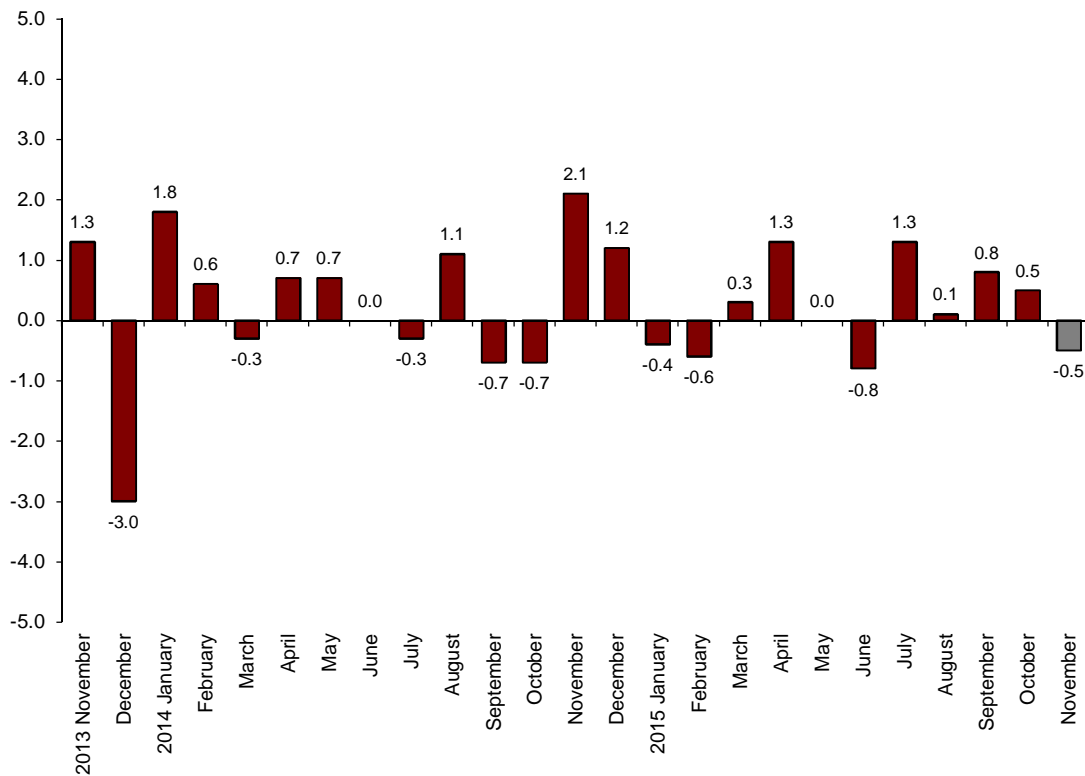
The monthly change of the Retail Trade Index at constant prices stands at -0.5% after adjusting for seasonal and calendar effects

The annual rate of the General Retail Trade Index at constant prices stands at 3.3% in the series adjusted for seasonal and calendar effects and at 4.2% in the original series

Monthly evolution of sales in Retail Trade

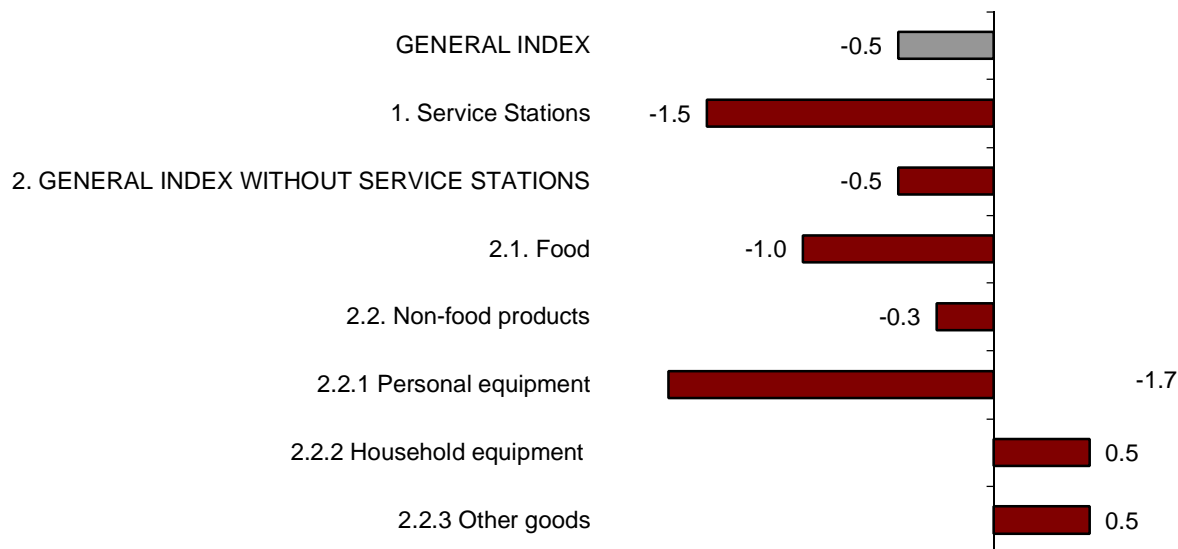
The monthly evolution of the General Retail Trade Index at constant prices between the months of November and October stood at -0.5% after adjusting for seasonal and calendar effects. This rate was one point lower than that registered in the previous month.

**General Index of Retail Trade at constant prices
Adjusted for seasonally and calendar effects. Monthly Rate**



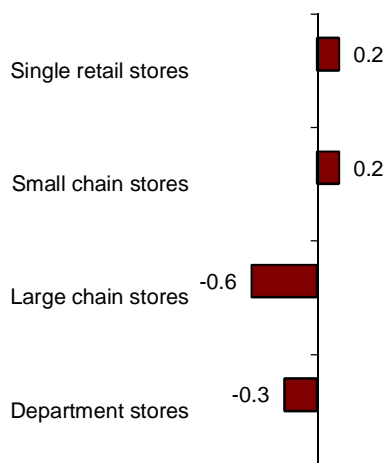
The general index, not including service stations, registered a monthly rate of -0.5%. By products, *Food products* decreased by 0.1% and *Other goods* did so by 0.3%. By type of product, *Personal equipment* is the only one decreasing (-1.7%).

**Sales Indices at constant prices: General and by type of products.
Adjusted for seasonal and calendar effects. Monthly rate**



Large chain stores (-0.6%) and *Department stores* (-0.3%) registered negative monthly rates, while *Single retail stores* and *Small chain stores* increased their sales as compared to the previous month (both by 0.2%).

**Sales indices at constant prices by distribution class
Adjusted for seasonal and calendar effects. Monthly rate**

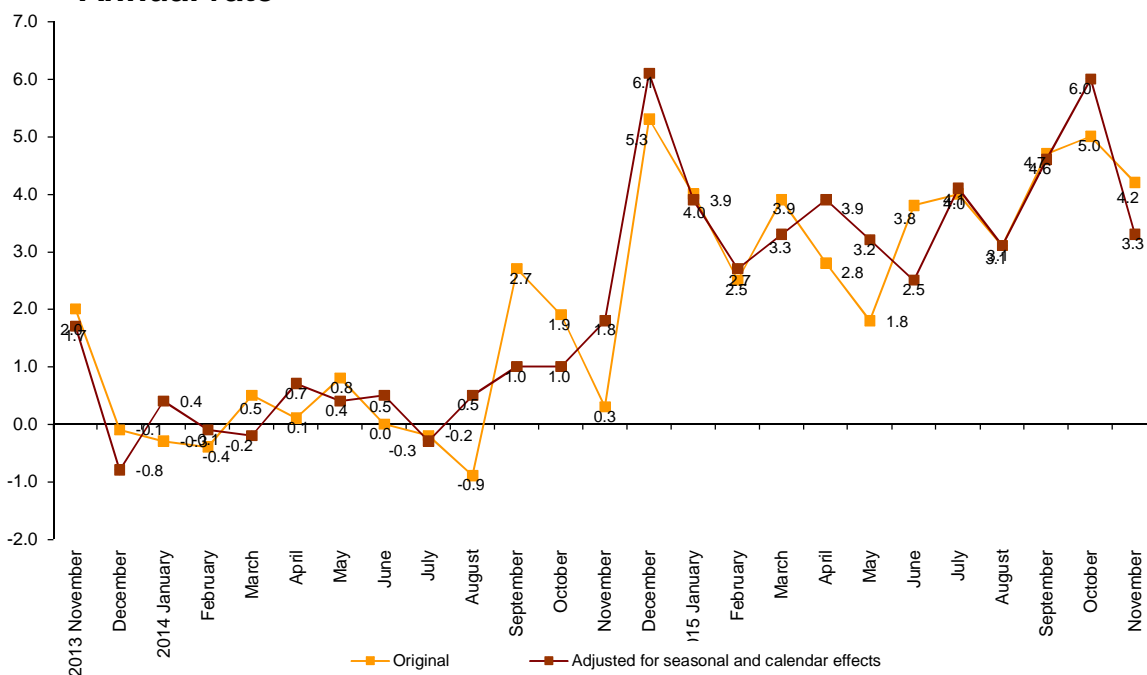


Annual evolution of sales in retail trade

In November, the General Retail Trade Index registered a variation of 3.3% as compared to the same month of 2014, after adjusting for seasonal and calendar effects. This rate was 2.7 points lower than that registered in October.

The original series of the RTI at constant prices registered a 4.2% variation as compared to November 2014, standing eight tenths under the rate of the previous month.

Retail Trade General Index at constant prices Annual rate



The General Index, not including service stations, and after adjusting for seasonal and calendar effects, registered an annual change of 2.7% in November. By type of product, *Food* decreased by 2.0% and *Non-food products* increased by 4.4%.

Retail trade sector sales. Annual rates at constant prices.

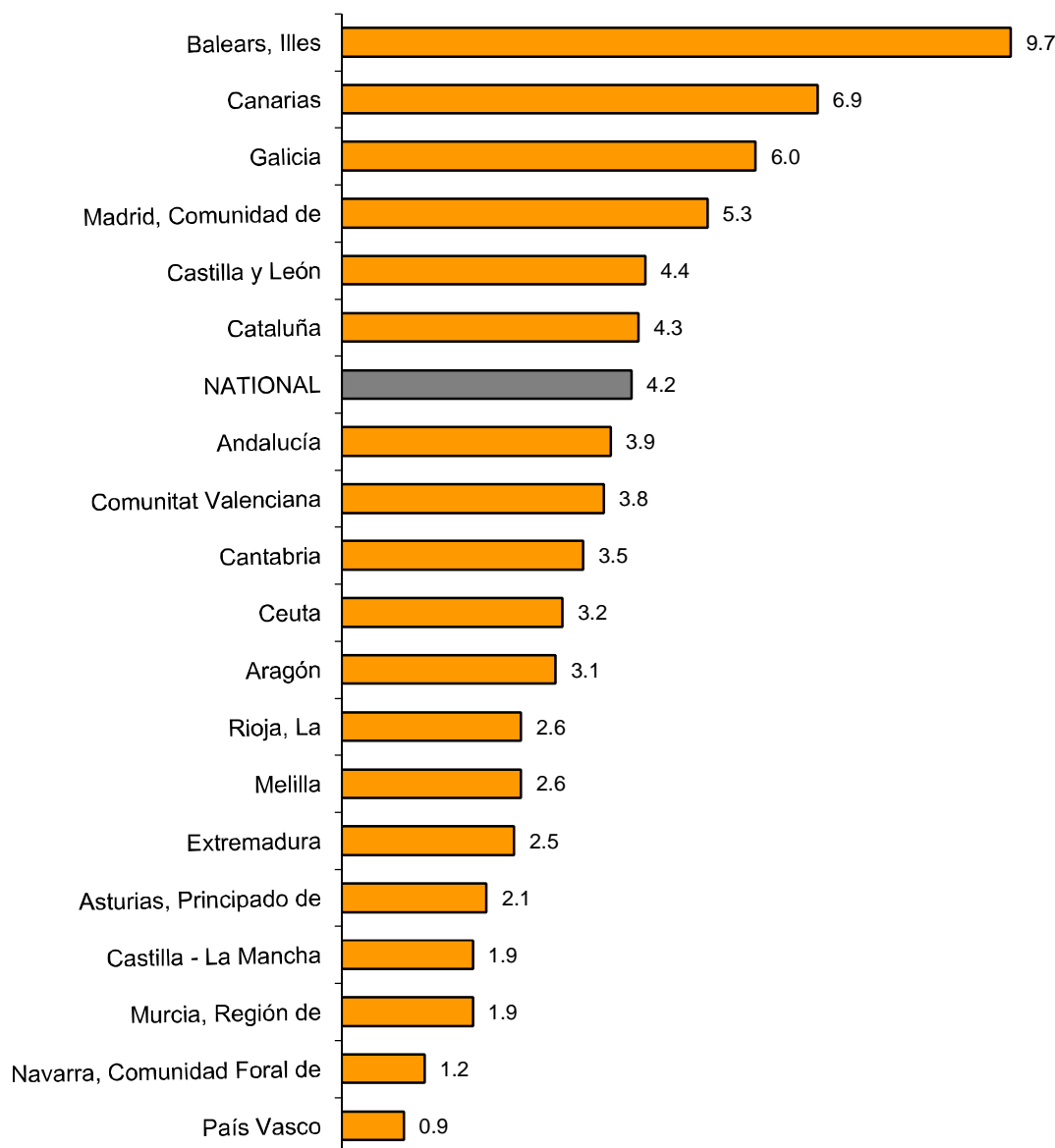
	Original Index	Seasonally adjusted index
	Annual rate (%)	Annual rate (%)
GENERAL INDEX	4.2	3.3
1. Service stations	4.9	4.8
2. GENERAL INDEX WITHOUT SERVICE STATIONS	3.7	2.7
2.1. Food	0.5	-0.2
2.2. Non-food products	5.8	4.4
2.2.1 Personal equipment	4.4	3.6
2.2.2 Household equipment	6.5	4.7
2.2.3 Other goods	5.0	3.7
DISTRIBUTION CLASS		
3. Single retail stores	4.0	2.8
4. Small chain stores	4.5	3.1
5. Large chain stores	4.4	3.2
6. Department stores	3.7	4.9

Results by Autonomous Community. Annual variation rates in sales. Original series

In November, all the Autonomous Communities increased their sales as compared with the same month of 2014. Illes Balears (9.7%) and Canarias (6.9%) registered the highest increases.

In turn, País Vasco (0.9%) and Comunidad Foral de Navarra (1.2%) registered the lowest increases.

General Indices : National and by Autonomous City and Community. Annual sales rate



Evolution of employment

In November, the employment index in the retail trade sector registered a variation of 1.8%, as compared to the same month of 2014. This rate was five tenths higher than that registered in October. In *Service stations*, employment increased by 0.8%.

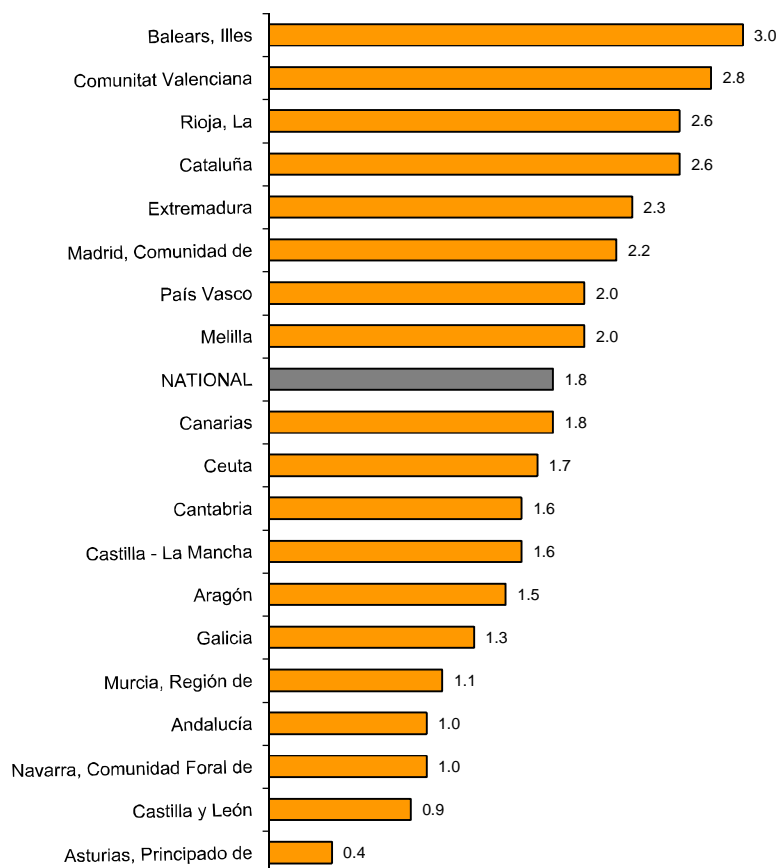
Employment Indices: General and by distribution class

	Index	Rate (%)		
		Monthly	Annual	Year-to-date average
GENERAL INDEX	97.4	0.3	1.8	1.0
1. Service stations	93.0	-0.9	0.8	0.2
2. GENERAL INDEX WITHOUT SERVICE STATIONS	97.5	0.3	1.9	1.1
2.1. Single retail stores	99.6	-0.5	1.4	1.8
2.2. Small chain stores	85.6	-0.2	0.2	-0.7
2.3. Large chain stores	104.4	1.5	3.4	0.8
2.4. Department stores	96.4	2.6	3.7	1.7

Results by Autonomous Community. Annual variation rates in employment

In November, employment in retail trade increased its annual rate in all the Autonomous Communities. Illes Balears (3.0%) registered the greatest increase.

General Indices : National and by Autonomous City and Community. Employment Index. Annual Rate



Retail Trade Indices. Base 2010 November 2015

Provisional data

1. Sales indices: General, by products and by distribution class Adjusted for seasonal and calendar effects

	Index	Rate (%)		Year-to-date average	Deflated index	Rate (%)		Year-to-date average
		Monthly	Annual			Monthly	Annual	
GENERAL INDEX	94.8	-0.1	1.8	1.8	89.0	-0.5	3.3	3.7
1. Service stations	90.1	-0.9	-8.9	-6.6	87.8	-1.5	4.8	6.7
2. GENERAL INDEX WITHOUT SERVICE STATIONS	95.2	-0.4	2.7	2.8	88.9	-0.5	2.7	3.1
2.1. Food	103.0	-1.1	1.4	1.8	92.3	-1.0	-0.2	0.6
2.2. Non-food products	89.8	-0.2	3.5	3.6	85.8	-0.3	4.4	4.7
2.2.1 Personal equipment	93.4	-1.6	4.0	3.8	92.4	-1.7	3.6	3.5
2.2.2 Household equipment	86.4	0.5	4.7	5.1	84.5	0.5	4.7	5.4
2.2.3 Other goods	90.1	0.5	2.7	2.7	86.0	0.5	3.7	3.8
DISTRIBUTION CLASS								
3. Single retail stores	88.7	0.3	2.7	2.7	82.8	0.2	2.8	3.1
4. Small chain stores	90.6	0.3	3.1	1.6	84.7	0.2	3.1	1.9
5. Large chain stores	110.3	-0.5	3.2	4.0	102.9	-0.6	3.2	4.4
6. Department stores	94.1	-0.2	4.8	4.5	87.8	-0.3	4.9	4.9

2. Sales indices: General, by products and by distribution class. Adjusted for calendar effects

	Index	Rate (%)		Deflated index	Rate (%)	
		Annual	Year-to-date average		Annual	Year-to-date average
GENERAL INDEX	92.3	1.6	1.8	85.5	3.3	3.7
1. Service stations	87.1	-9.2	-6.4	85.8	4.3	6.8
2. GENERAL INDEX WITHOUT SERVICE STATIONS	92.8	2.7	2.8	85.2	2.7	3.1
2.1. Food	99.2	1.4	1.8	88.9	-0.2	0.6
2.2. Non-food products	88.6	3.7	3.5	82.2	4.7	4.7
2.2.1 Personal equipment	90.2	4.2	3.9	80.1	3.6	3.5
2.2.2 Household equipment	88.2	5.0	5.1	86.0	5.0	5.3
2.2.3 Other goods	88.0	2.9	2.6	81.6	3.8	3.8
DISTRIBUTION CLASS						
3. Single retail stores	87.0	2.9	2.7	79.9	2.9	3.0
4. Small chain stores	87.5	3.3	1.5	80.4	3.3	1.9
5. Large chain stores	106.5	3.2	4.1	97.8	3.3	4.4
6. Department stores	91.0	3.2	4.5	83.6	3.2	4.9

3. Sales indices: General, by products and by distribution class Original Series

	Index	Rate (%)		Deflated index	Rate (%)	
		Annual	Year-to-date average		Annual	Year-to-date average
GENERAL INDEX	92.1	2.5	1.7	85.3	4.2	3.6
1. Service stations	87.0	-8.7	-6.5	85.7	4.9	6.7
2. GENERAL INDEX WITHOUT SERVICE STATIONS	92.6	3.7	2.7	85.0	3.7	3.1
2.1. Food	98.9	2.2	1.8	88.7	0.5	0.6
2.2. Non-food products	88.4	4.8	3.5	81.9	5.8	4.6
2.2.1 Personal equipment	90.1	5.0	3.8	80.0	4.4	3.4
2.2.2 Household equipment	87.9	6.5	5.0	85.7	6.5	5.3
2.2.3 Other goods	87.8	4.0	2.6	81.4	5.0	3.7
DISTRIBUTION CLASS						
2.1. Single retail stores	86.8	4.0	2.6	79.7	4.0	3.0
2.2. Small chain stores	87.3	4.5	1.5	80.2	4.5	1.8
2.3. Large chain stores	106.1	4.4	4.0	97.5	4.4	4.4
2.4. Department stores	90.9	3.7	4.5	83.5	3.7	4.8
2.4.1. Food	92.1	-1.3	0.5	82.6	-2.9	-0.7
2.4.2. Non-food products	90.2	6.2	6.5	83.7	7.2	7.7

4. Sales indices: National and by Autonomous City and Community Original Series

	Index	Rate (%)		Deflated index	Rate (%)	
		Annual	Year-to-date average		Annual	Year-to-date average
NATIONAL	92.1	2.5	1.7	85.3	4.2	3.6
Andalucía	88.6	2.3	1.4	82.1	3.9	3.2
Aragón	87.7	1.3	0.5	81.4	3.1	2.7
Asturias, Principado de	83.8	0.2	-1.2	77.5	2.1	1.0
Balears, Illes	100.5	8.4	4.8	92.7	9.7	6.3
Canarias	104.6	4.8	1.8	100.7	6.9	4.1
Cantabria	89.1	1.5	3.6	81.7	3.5	5.9
Castilla y León	89.2	2.0	1.1	82.1	4.4	3.8
Castilla - La Mancha	86.2	-0.3	0.1	80.0	1.9	2.7
Cataluña	94.3	2.9	2.1	86.3	4.3	3.7
Comunitat Valenciana	91.8	2.3	3.5	85.1	3.8	5.3
Extremadura	93.6	0.5	-0.7	87.2	2.5	1.5
Galicia	92.0	4.0	2.1	85.1	6.0	4.2
Madrid, Comunidad de	93.7	3.5	2.2	87.7	5.3	4.2
Murcia, Región de	86.7	0.4	0.8	79.9	1.9	2.6
Navarra, Comunidad Foral de	93.7	-0.9	0.0	87.5	1.2	2.3
País Vasco	90.5	-0.3	-0.4	83.4	0.9	1.2
Rioja, La	92.0	1.1	0.8	84.0	2.6	2.5
Ceuta	95.3	1.9	0.6	90.8	3.2	2.3
Melilla	95.5	0.6	-0.3	92.0	2.6	1.3

5. Employment Indices: General and by distribution class

	Index	Rate (%)		
		Monthly	Annual	Year-to-date average
GENERAL INDEX	97.4	0.3	1.8	1.0
1. Service stations	93.0	-0.9	0.8	0.2
2. GENERAL INDEX WITHOUT SERVICE STATIONS	97.5	0.3	1.9	1.1
2.1. Single retail stores	99.6	-0.5	1.4	1.8
2.2. Small chain stores	85.6	-0.2	0.2	-0.7
2.3. Large chain stores	104.4	1.5	3.4	0.8
2.4. Department stores	96.4	2.6	3.7	1.7

6. Employment Indices: National and by Autonomous City and Community

	Index	Rate (%)		
		Monthly	Annual	Year-to-date average
NATIONAL	97.4	0.3	1.8	1.0
Andalucía	93.1	-0.2	1.0	0.8
Aragón	96.0	0.5	1.5	-0.5
Asturias, Principado de	92.3	0.2	0.4	-0.4
Balears, Illes	101.4	-3.2	3.0	1.9
Canarias	103.5	1.3	1.8	0.5
Cantabria	99.8	0.3	1.6	2.0
Castilla y León	97.7	0.4	0.9	0.6
Castilla - La Mancha	98.4	-0.2	1.6	1.3
Cataluña	100.7	0.5	2.6	1.4
Comunitat Valenciana	99.5	0.8	2.8	1.6
Extremadura	99.5	0.2	2.3	1.5
Galicia	97.2	0.3	1.3	0.8
Madrid, Comunidad de	94.8	0.2	2.2	1.2
Murcia, Región de	93.9	0.6	1.1	1.7
Navarra, Comunidad Foral de	96.1	0.9	1.0	1.0
País Vasco	98.7	1.1	2.0	0.7
Rioja, La	99.6	-0.7	2.6	0.4
Ceuta	101.2	0.3	1.7	0.8
Melilla	103.6	0.6	2.0	0.8