

8 March 2013

**Industrial Production Index (IPI). Base 2005**  
January 2013. *Provisional data*

**The annual variation of the Industrial Production Index stands at –3.6% in January, as compared with –8.6% in December 2012**

**The adjusted calendar effect annual rate of the IPI stands at –5.0%, as compared with –7.1% in December**

**Annual performance of industrial production**

The Industrial Production Index (IPI) experienced an annual variation of –3.6% in January, five points higher than that registered in December 2012.

All the industrial sectors presented negative annual rates. Those with a greater negative effect were:

- **Non-durable consumer goods**, with a variation of –5.5% and an effect of –1.667. Production decreased in half of the activities in this sector. Among them, highlighting *Manufacture of vegetable and animal oils and fats, Printing and service activities related to printing and Manufacture of wearing apparel, except for fur apparel*. Among those activities increasing their production, worth noting *Manufacture of beverages and Manufacture of bakery and farinaceous products*.
- **Intermediate goods**, with a rate of –2.3% and an effect of –0.769, due to the decrease in the production of most of the activities in this sector. The activities that most influenced in this drop were the *Manufacture of articles of concrete, cement and plaster and Manufacture of rubber products*. Among those activities increasing their production, worth noting *Treatment and coating of metals; mechanical engineering by third parties and Manufacture of other chemical products*.
- **Energy**, registered a rate of –3.9% and an effect of –0.665 in the general index, due to the negative performance of *Electric power generation, transmission and distribution and Mining of hard coal*.

A more detailed analysis showed the activities that most affected the annual rate of the IPI in the month of January 2013.

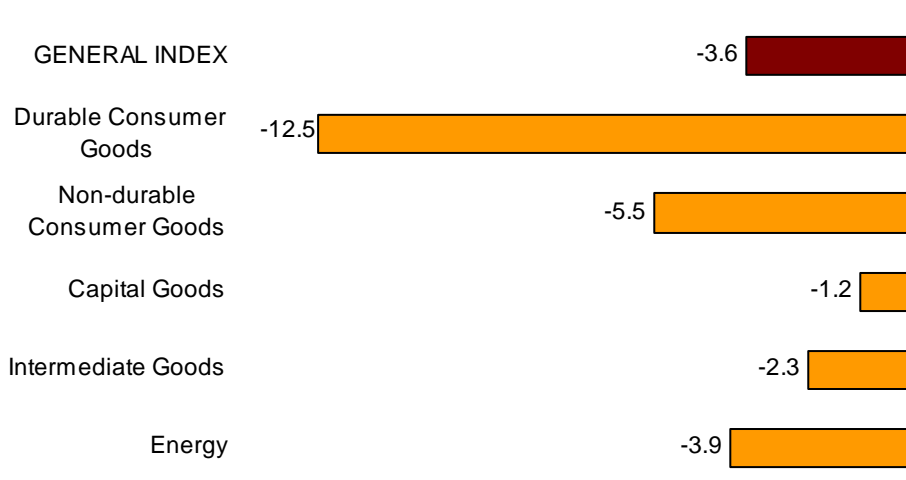
**Activities with the greatest negative effect on the annual rate of IPI**

Activity (CNAE 2009 Group)	Annual rate (%)	Effect
Manufacture of vegetable and animal oils and fats	-63.6	-1.848
Electric power generation, transmission and distribution	-6.3	-0.672
Printing and service activities related to printing	-14.0	-0.301
Manufacture of articles of concrete, cement and plaster	-34.5	-0.254

**Activities with the greatest positive effect on the annual rate of IPI**

Activity (CNAE 2009 Group)	Annual rate (%)	Effect
Treatment and coating of metals; mechanical engineering by third parties	19.1	0.352
Manufacture of beverages	10.0	0.295
Manufacture of other chemical products	23.2	0.276
Manufacture of bakery and farinaceous products	7.2	0.176

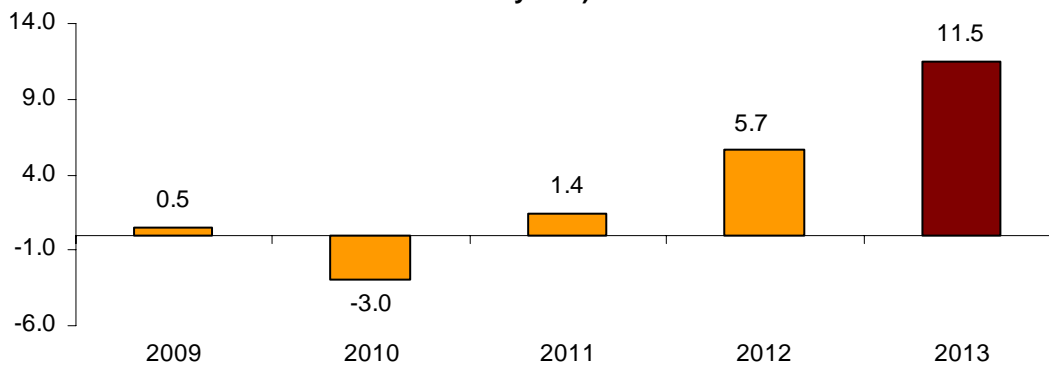
**Annual rate by general index and economic destination**



**Monthly rate performance<sup>1</sup>**

The variation rate of IPI in January as compared with December 2012 was 11.5%, the highest registered in the last five years.

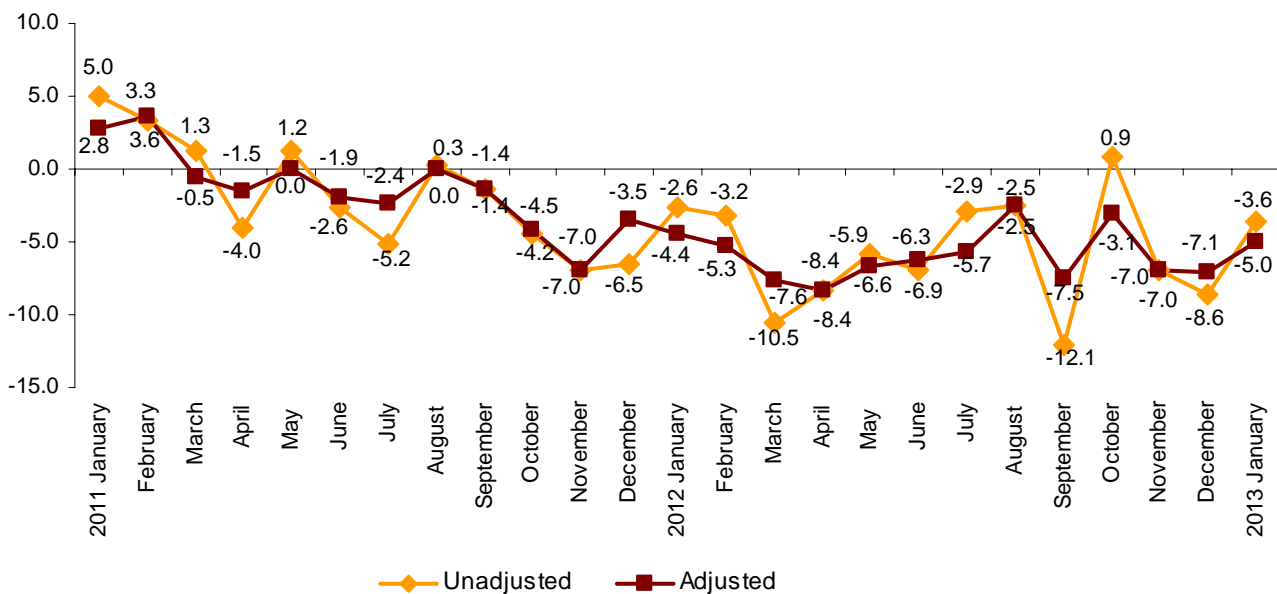
**Performance of the monthly rate of IPI**  
(variation of January, as compared with December in the last five years)



**Performance of the IPI, adjusted for the calendar effect**

After correcting the calendar effect, that is, the difference between the number of working days in a given month in different years, the interannual variation of the IPI in the month of January was **-5.0%**, more than two tenths higher than that registered in December.

**Annual performance of IPI**  
**General index, adjusted and unadjusted**



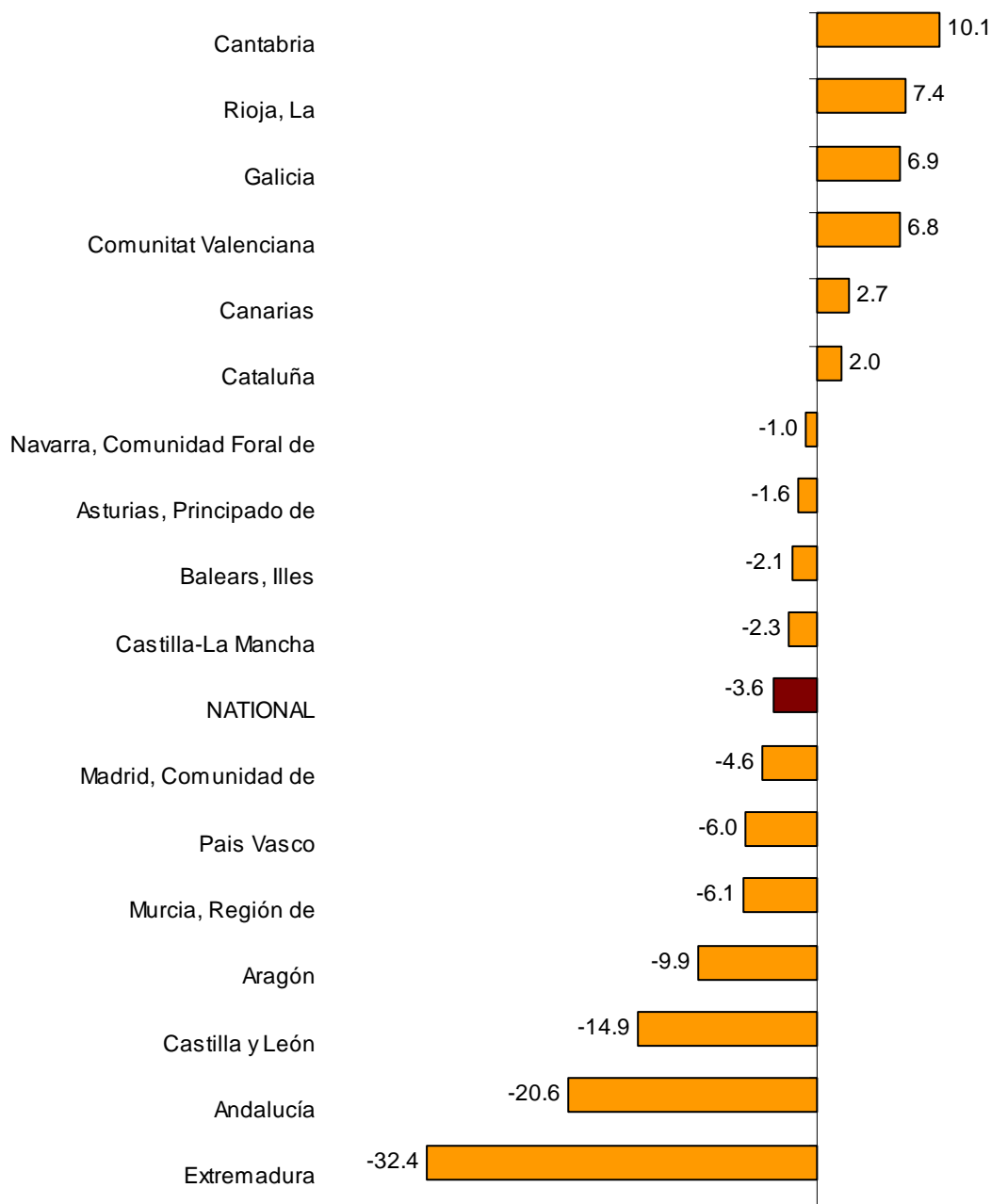
<sup>1</sup> In order to contribute to the analysis and interpretation of data, it has been added in this section the performance of the monthly IPI rate in January for the last years. The monthly rates of this type of series may have a seasonal behavior; therefore it is recommended to evaluate it in relation to the item of data for **IPI - JANUARY 2013 (2/8)** years.

**Results by Autonomous Community. Variation rates.**

In January, the Autonomous Communities that registered the greatest increases in the annual rate of IPI were Cantabria (10.1%), La Rioja (7.3%) and Galicia (6.9%).

Conversely, those registering the greatest decreases were Extremadura (-32.4%), Andalucía (-20.6%) and Castilla y León (-14.9%).

**Annual rate of IPI  
General index by Autonomous Community**



# Industrial Production Index. Base 2005

## January 2013

Provisional data

8 March 2013

### 1. Clasification by economic destination of the goods<sup>1</sup>

	Index	% variation	
		Annual	Year-to-date average
GENERAL INDEX	75.6	-3.6	-3.6
Consumer goods	84.3	-6.0	-6.0
Durable consumer goods	41.3	-12.5	-12.5
Non-durable consumer goods	92.1	-5.5	-5.5
Capital goods	64.6	-1.2	-1.2
Intermediate goods	67.0	-2.3	-2.3
Energy	98.7	-3.9	-3.9

<sup>1</sup> Commission Regulation (EC) n° 656/2007

### 2. Series adjusted for calendar effects

	Index	% variation	
		Annual	Year-to-date average
GENERAL INDEX	76.2	-5.0	-5.0
Consumer goods	84.2	-7.9	-7.9
Durable consumer goods	42.4	-15.0	-15.0
Non-durable consumer goods	91.7	-7.4	-7.4
Capital goods	66.0	-2.7	-2.7
Intermediate goods	68.1	-3.8	-3.8
Energy	98.4	-4.4	-4.4

### 3. Interannual rates. General index and by economic destination of the goods <sup>1</sup>

Period	General index		Consumer goods		Durable consumer goods		Non-durable consumer goods	
	Original	Adjusted <sup>1</sup>	Original	Adjusted <sup>1</sup>	Original	Adjusted <sup>1</sup>	Original	Adjusted <sup>1</sup>
2012 January	-2.6	-4.4	0.9	-1.4	-5.2	-8.3	1.6	-0.6
February	-3.2	-5.3	-2.3	-5.0	-10.7	-14.4	-1.5	-4.0
March	-10.5	-7.6	-8.2	-4.6	-14.4	-9.4	-7.4	-3.9
April	-8.4	-8.4	-7.5	-7.5	-16.5	-16.7	-6.4	-6.4
May	-5.9	-6.6	-3.0	-3.7	-10.3	-11.4	-2.2	-2.9
June	-6.9	-6.3	-3.1	-2.3	-13.3	-12.2	-2.0	-1.2
July	-2.9	-5.7	-1.4	-4.9	-11.5	-16.3	-0.3	-3.7
August	-2.5	-2.5	-2.9	-2.8	1.2	1.2	-3.1	-3.2
September	-12.1	-7.5	-12.0	-6.1	-20.9	-12.8	-11.1	-5.5
October	0.9	-3.1	2.7	-2.4	0.7	-6.3	2.9	-2.0
November *	-7.0	-7.0	-5.8	-5.8	-10.8	-10.8	-5.2	-5.2
December *	-8.6	-7.1	-13.0	-11.0	-17.3	-14.6	-12.7	-10.8
2013 January	-3.6	-5.0	-6.0	-7.9	-12.5	-15.0	-5.5	-7.4

Period	Capital goods		Intermediate goods		Energy	
	Original	Adjusted <sup>1</sup>	Original	Adjusted <sup>1</sup>	Original	Adjusted <sup>1</sup>
2012 January	-6.0	-7.9	-3.5	-5.5	-3.6	-4.2
February	-9.0	-11.1	-5.2	-7.3	7.9	7.2
March	-14.3	-11.4	-13.1	-10.2	-3.1	-2.2
April	-15.5	-15.4	-8.2	-8.4	-0.2	-0.2
May	-12.7	-13.3	-6.7	-7.3	0.3	0.1
June	-13.6	-13.0	-8.0	-7.4	-1.9	-1.7
July	-7.2	-10.0	-4.8	-7.8	4.9	4.0
August	-5.8	-5.9	-4.6	-4.7	4.2	4.2
September	-19.1	-14.4	-12.2	-7.2	-1.9	-0.3
October	-2.2	-6.2	-0.9	-5.2	5.7	4.3
November *	-12.9	-12.8	-7.4	-7.3	-0.9	-0.9
December *	-5.9	-4.4	-10.6	-9.0	0.1	0.6
2013 January	-1.2	-2.7	-2.3	-3.8	-3.9	-4.4

<sup>1</sup> Index rates adjusted for calendar effects

\* Data revised

#### 4. General Index and classification by activity (CNAE 2009)

	Index	% variation	
		Annual	Year-to-date average
<b>GENERAL INDEX</b>	75.6	-3.6	-3.6
<b>B. Mining and quarrying</b>	44.1	-20.1	-20.1
Mining of coal and lignite	29.3	-62.4	-62.4
Other mining and quarrying	43.7	-9.7	-9.7
<b>C. Manufacturing</b>	73.6	-3.2	-3.2
Manufacture of food products	99.8	-9.8	-9.8
Manufacture of beverages	77.9	10.0	10.0
Manufacture of tobacco products	75.1	22.7	22.7
Manufacture of textiles	63.9	8.1	8.1
Manufacture of wearing apparel	53.1	-10.8	-10.8
Manufacture of leather and related products	74.6	-1.7	-1.7
Wood and cork industry, except furniture, basketmaking and esparto	41.2	-4.2	-4.2
Manufacture of paper and paper products	100.4	1.2	1.2
Printing and reproduction of recorded media	64.8	-13.9	-13.9
Manufacture of coke and refined petroleum products	97.8	1.9	1.9
Manufacture of chemicals and chemical products	97.2	2.0	2.0
Manufacture of basic pharmaceutical products and pharmaceutical preparations	143.5	-1.9	-1.9
Manufacture of rubber and plastic products	74.3	-7.5	-7.5
Manufacture of other non-metallic mineral products	36.8	-10.0	-10.0
Manufacture of basic metals	77.9	-3.7	-3.7
Manufacture of fabricated metal products, except machinery and equipment	59.6	1.7	1.7
Manufacture of computer, electronic and optical products	45.8	-12.8	-12.8
Manufacture of electrical equipment	67.9	-9.7	-9.7
Manufacture of machinery and equipment n.e.c.	70.9	-4.3	-4.3
Manufacture of motor vehicles, trailers and semi-trailers	72.4	0.6	0.6
Manufacture of other transport equipment	63.3	2.3	2.3
Manufacture of furniture	36.0	-14.1	-14.1
Other manufacturing	82.2	1.6	1.6
Repair and installation of machinery and equipment	90.9	21.2	21.2
<b>D. Electricity, gas, steam and air conditioning supply</b>	101.4	-4.7	-4.7

## 5. General index by Autonomous Community

	Index	% variation	
		Annual	Year-to-date average
NATIONAL	75.6	-3.6	-3.6
Andalucía	69.9	-20.6	-20.6
Aragón	73.2	-9.9	-9.9
Asturias, Principado de	80.9	-1.6	-1.6
Balears, Illes	59.7	-2.1	-2.1
Canarias	75.3	2.7	2.7
Cantabria	98.4	10.1	10.1
Castilla y León	69.0	-14.9	-14.9
Castilla-La Mancha	71.7	-2.3	-2.3
Cataluña	81.9	2.0	2.0
Comunitat Valenciana	75.6	6.8	6.8
Extremadura	65.0	-32.4	-32.4
Galicia	85.6	6.9	6.9
Madrid, Comunidad de	72.1	-4.6	-4.6
Murcia, Región de	81.8	-6.1	-6.1
Navarra, Comunidad Foral de	80.0	-1.0	-1.0
País Vasco	75.2	-6.0	-6.0
Rioja, La	80.2	7.4	7.4

### More detailed information by Autonomous Community can be obtained at:

Andalucía	<a href="http://www.juntadeandalucia.es/institutodeestadistica">www.juntadeandalucia.es/institutodeestadistica</a>
Aragón	<a href="http://portal.aragon.es/">http://portal.aragon.es/</a>
Principado de Asturias	<a href="http://www.sadei.es">www.sadei.es</a>
Illes Balears	<a href="http://ibestat.caib.es">http://ibestat.caib.es</a>
Canarias	<a href="http://www.gobiernodecanarias.org/istac">www.gobiernodecanarias.org/istac</a>
Cantabria	<a href="http://www.icane.es">www.icane.es</a>
Castilla y León	<a href="http://www.jcyl.es/estadistica">www.jcyl.es/estadistica</a>
Castilla - La Mancha	<a href="http://www.jccm.es/estadistica">www.jccm.es/estadistica</a>
Cataluña	<a href="http://www.idescat.cat">www.idescat.cat</a>
Comunitat Valenciana	<a href="http://www.ive.es/indexipi.htm">www.ive.es/indexipi.htm</a>
Extremadura	<a href="http://www.estadisticaextremadura.com">www.estadisticaextremadura.com</a>
Galicia	<a href="http://www.ige.xunta.es">www.ige.xunta.es</a>
Comunidad de Madrid	<a href="http://www.madrid.org/estadis">www.madrid.org/estadis</a>
Región de Murcia	<a href="http://www.carm.es/econet">www.carm.es/econet</a>