

06 April 2018

**Industrial Production Indices (IPI). Base 2015**  
February 2018. *Provisional data*

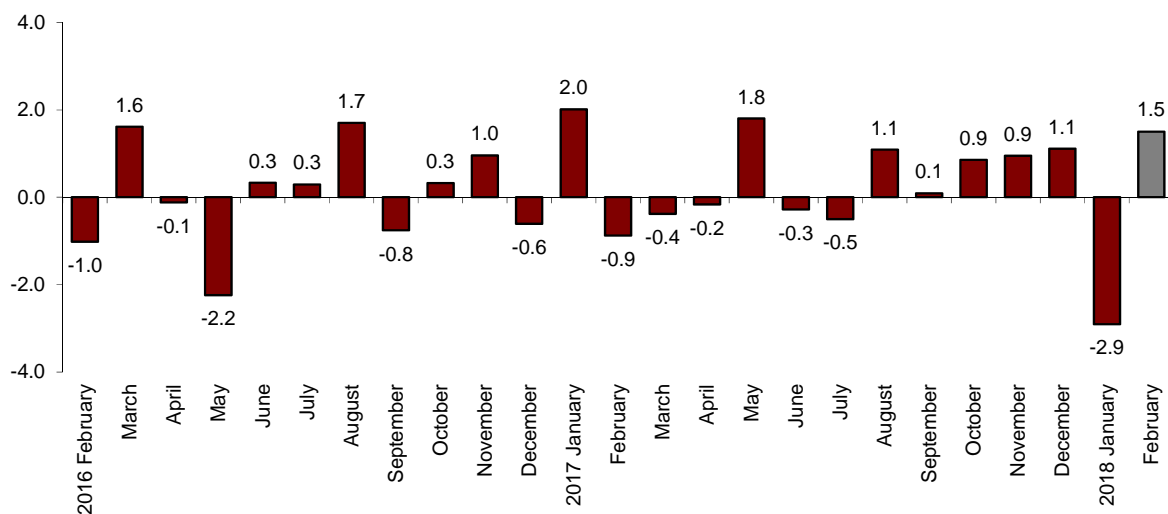
**The monthly variation of the Industrial Production Index stands at 1.5%, after adjusting for seasonal and calendar effects**

**The annual rate of the Industrial Production Index stands at 3.1% in the series adjusted for seasonal and calendar effects and also at 3.1% in the original series**

**Monthly evolution of industrial production**

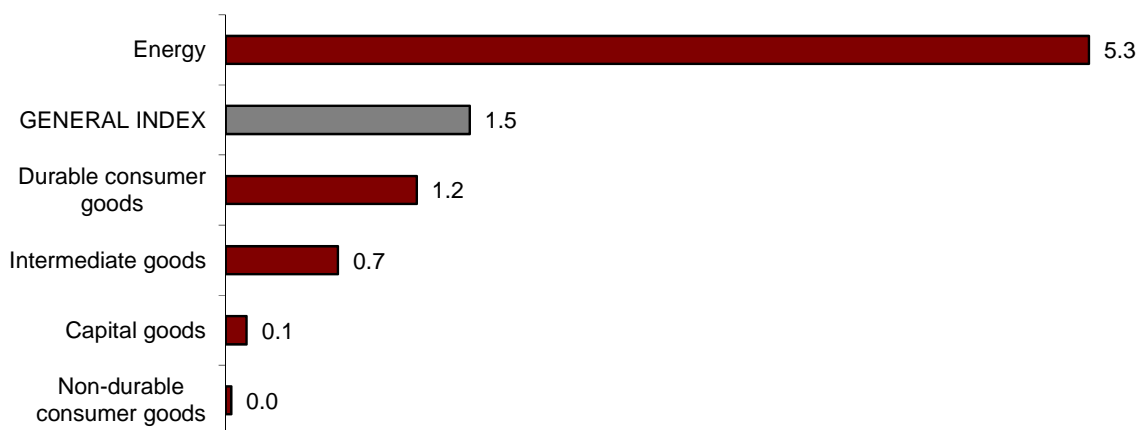
After adjusting for seasonal and calendar effects, the monthly variation of the Industrial Production Index (IPI) between February and January stood at 1.5%. This rate is 4.4 points higher than that observed in January.

**General Industrial Production Index**  
**Adjusted for seasonal and calendar effects. Monthly rate**



All sectors registered positive monthly rates. *Energy* (5.3%), *Durable consumer goods* (1.2%) and *Intermediate goods* (0.7%) recorded the largest increases.

**Industrial Production Indices: General and by economic destination of the goods. Adjusted for seasonal and calendar effects. Monthly rate**



A more detailed analysis shows the branches of activity with the greatest and lowest monthly rates in the month of February.

**Activities with the highest annual rates of the Industrial Production Indices adjusted for seasonal and calendar effects**

Activity (Division from CNAE 2009)	Monthly rate (%)
Tobacco industry	7.9
Supply of electrical energy, gas, steam and air conditioning	7.3
Manufacture of wood and of products of wood and cork, except furniture; basketmaking and wickerwork	5.8

**Activities with the lowest annual rates of the Industrial Production Indices adjusted for seasonal and calendar effects**

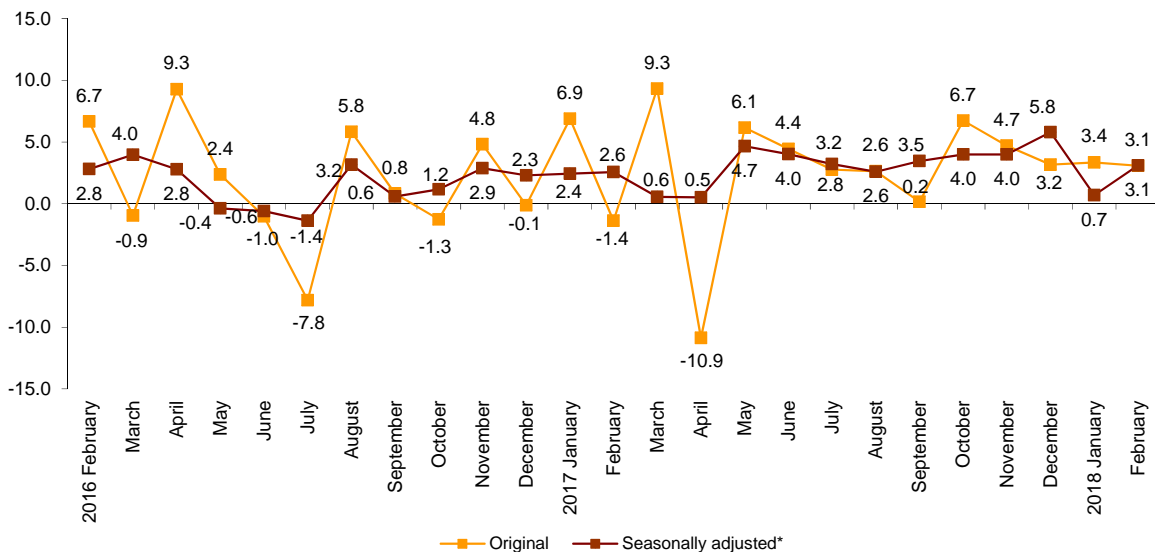
Activity (Division from CNAE 2009)	Monthly rate (%)
Extraction of anthracite, coal and lignite	-14.3
Manufacture of garments	-3.3
Other manufacturing industries	-3.2

## Annual evolution of the Industrial Production

The Industrial Production Index, adjusted for seasonal and calendar effects, presented in February a variation of 3.1% as compared with the same month of the previous year. This rate is 2.4 points higher than that registered in January.

The original series of the IPI experienced an annual variation of 3.1%. This rate is 0.3 point lower than that of January.

**General Industrial Production Index  
Annual rate**



For the indices adjusted for seasonal and calendar effects, all sectors presented positive annual rates. *Energy* (5.2%), *Intermediate goods* (4.9%) and *Durable consumer goods* (3.4%) recorded the largest increases.

## Annual rates of the Industrial Production Indices: General and by economic destination of the goods

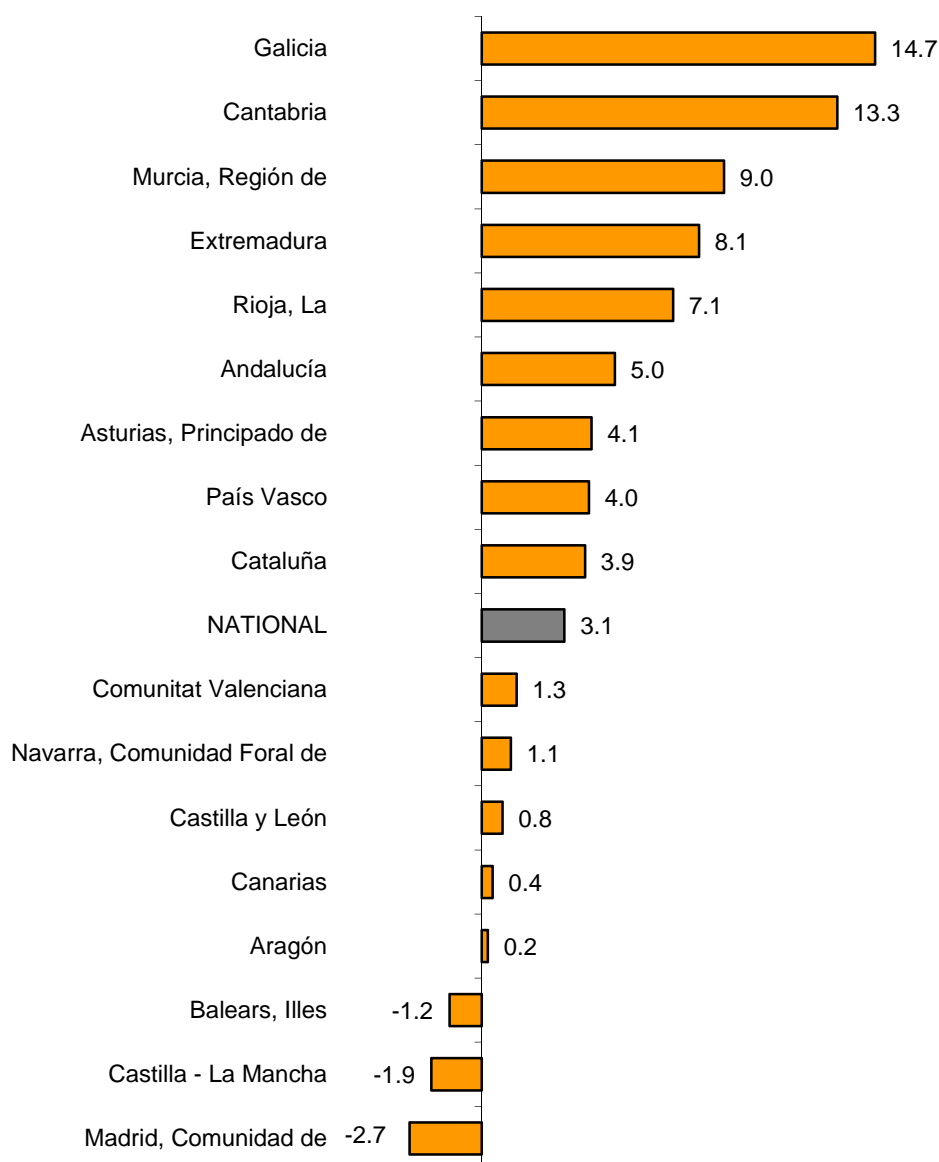
	Original index	Seasonally adjusted index
	Annual rate(%)	Annual rate (%)
<b>GENERAL INDEX</b>	3.1	3.1
1. Consumer goods	0.1	0.3
1.1. Durable consumer goods	3.4	3.4
1.2. Non-durable consumer goods	-0.2	0.4
2. Capital goods	2.1	2.3
3. Intermediate goods	4.8	4.9
4. Energy	5.3	5.2

## Results by Autonomous Communities. Annual variation rates of industrial production. Original series

The annual rate of industrial production in February was positive in 14 Autonomous Communities. The greatest increases were recorded in Galicia (14.7%), Cantabria (13.3%) and Región de Murcia (9.0%).

In turn, the communities with negative annual rates were Comunidad de Madrid (-2.7%), Castilla-La Mancha (-1.9%) and Illes Balears (-1.2%).

### General indices: national and by Autonomous Community Annual rate of the Industrial Production Index



For further information see INEbase: [www.ine.es/en/](http://www.ine.es/en/) Twitter: @es\_ine

All press releases at: [www.ine.es/en/prensa/prensa\\_en.htm](http://www.ine.es/en/prensa/prensa_en.htm)

Press office: Telephone numbers: (+34) 91 583 93 63 /94 08 – [gprensa@ine.es](mailto:gprensa@ine.es)

Information Area: Telephone number: (+34) 91 583 91 00 – [www.ine.es/infoine/?L=1](http://www.ine.es/infoine/?L=1)

## Industrial Production Indices. Base 2015 February 2018

Provisional data

### 1. General index by economic destination of the goods. Adjusted for seasonal and calendar effects

	Index	Rate (%)		
		Monthly	Annual	Year-to-date average
<b>GENERAL INDEX</b>	<b>106.9</b>	<b>1.5</b>	<b>3.1</b>	<b>1.9</b>
1. Consumer goods	102.7	0.5	0.3	0.7
1.1. Durable consumer goods	109.3	1.2	3.4	3.2
1.2. Non-durable consumer goods	102.1	0.0	0.4	0.6
2. Capital goods	109.7	0.1	2.3	3.3
3. Intermediate goods	110.5	0.7	4.9	4.6
4. Energy	104.0	5.3	5.2	-1.5

### 2. General index by economic destination of the goods. Adjusted for calendar effects

	Index	Rate (%)	
		Annual	Year-to-date average
<b>GENERAL INDEX</b>	<b>105.4</b>	<b>3.1</b>	<b>1.6</b>
1. Consumer goods	98.9	0.1	0.4
1.1. Durable consumer goods	107.2	3.4	2.7
1.2. Non-durable consumer goods	98.2	-0.2	0.3
2. Capital goods	112.1	2.1	3.0
3. Intermediate goods	109.6	4.8	4.4
4. Energy	100.8	5.3	-1.8

### 3. General index by economic destination of the goods. Original indices

	Index	Rate (%)		Repercussion Annual
		Annual	Year-to-date average	
<b>GENERAL INDEX</b>	<b>104.4</b>	<b>3.1</b>	<b>3.2</b>	
1. Consumer goods	98.1	0.1	2.4	0.033
1.1. Durable consumer goods	106.0	3.4	5.2	0.068
1.2. Non-durable consumer goods	97.4	-0.2	2.2	-0.035
2. Capital goods	110.7	2.1	4.9	0.489
3. Intermediate goods	108.5	4.8	6.0	1.477
4. Energy	99.7	5.3	-1.4	1.083

#### 4. General index by branch of activity (CNAE 2009)

	Index	Rate (%)		Repercussion
		Annual	Year-to-date average	Annual
<b>GENERAL INDEX</b>	<b>104.4</b>	<b>3.1</b>	<b>3.2</b>	
<b>B. Mining and quarrying industries</b>	91.6	14.1	15.9	0.078
Extraction of anthracite, coal and lignite	..	..	..	..
National crude petroleum and natural gas	..	..	..	..
Extraction of metallic ores	..	..	..	..
Other mining and quarrying	86.7	7.7	8.9	0.035
<b>C. Manufacturing industry</b>	105.6	2.6	4.6	2.121
Food Industry	98.4	1.9	1.7	0.216
Manufacture of beverages.	76.7	-2.2	1.0	-0.055
Tobacco industry.	..	..	..	..
Textile industry	107.5	4.2	5.8	0.046
Manufacture of garments	118.7	0.3	5.8	0.003
Leather and footwear industry	109.0	3.9	1.6	0.038
Manufacture of wood and of products of wood and cork, except furniture; basketm	116.8	16.4	11.6	0.201
Manufacture of paper and paper-products	97.7	1.2	3.0	0.029
Graphic arts and reproduction of recorded media	85.5	-4.1	0.8	-0.060
Manufacture of coke and refined petroleum products	99.5	9.4	8.4	0.202
Chemical Industry	102.4	1.3	5.3	0.082
Manufacture of pharmaceutical products	110.8	-3.5	3.1	-0.144
Rubber and plastic material transformation industry	112.2	3.7	5.6	0.181
Manufacture of other non-metallic ore products	104.0	4.0	5.7	0.148
Metallurgy; manufacture of iron, steel and ferro-alloy products	111.0	5.1	4.3	0.183
Manufacture of metal products, except machinery and equipment	110.7	6.3	6.7	0.507
Manufacture of computers, electronic and optical products	102.7	2.0	1.4	0.021
Manufacture of electrical material and equipment	106.5	-0.9	4.1	-0.027
Manufacture of machinery and equipment n.e.c.	111.1	7.8	13.6	0.363
Manufacture of motor vehicles, trailers and semi-trailers	113.5	-2.4	0.2	-0.224
Manufacture of other transport equipment	113.5	-0.4	1.9	-0.013
Manufacture of furniture.	109.8	4.1	3.7	0.055
Other manufacturing industries	103.6	6.1	7.3	0.065
Repair and installation of machinery and equipment	117.1	11.3	13.3	0.322
<b>D. Supply of electrical energy, gas, steam and air conditioning</b>	103.1	5.5	-2.7	0.870
<b>E. Water supply, activities, waste management and decontamination*</b>	81.4	0.6	-1.0	0.014

\* It only includes Water collection, treatment and supply

(..) Data not available due to statistical secrecy.

## 5. General Industrial Production Indices: national and by Autonomous Community

	Index	Rate (%)	
		Annual	Year-to-date average
<b>NACIONAL</b>	<b>104.4</b>	<b>3.1</b>	<b>3.2</b>
Andalucía	98.1	5.0	3.1
Aragón	107.7	0.2	2.1
Asturias, Principado de	103.5	4.1	5.4
Balears, Illes	92.0	-1.2	-3.5
Canarias	89.6	0.4	-1.3
Cantabria	116.6	13.3	14.5
Castilla y León	99.7	0.8	-2.2
Castilla-La Mancha	95.2	-1.9	1.7
Cataluña	108.7	3.9	5.7
Comunitat Valenciana	102.9	1.3	0.8
Extremadura	100.5	8.1	6.0
Galicia	109.8	14.7	9.7
Madrid, Comunidad de	104.4	-2.7	-1.1
Murcia, Región de	103.3	9.0	5.3
Navarra, Comunidad Foral de	106.8	1.1	0.9
País Vasco	106.3	4.0	5.1
Rioja, La	96.9	7.1	2.7

More detailed information by Autonomous Community may be obtained at:

Andalucía	<a href="http://www.juntadeandalucia.es/institutodeestadisticaycartografia">www.juntadeandalucia.es/institutodeestadisticaycartografia</a>
Aragón	<a href="http://www.aragon.es/iaest/ipi">www.aragon.es/iaest/ipi</a>
Principado de Asturias	<a href="http://www.sadei.es">www.sadei.es</a>
Illes Balears	<a href="http://www.ibestat.caib.es">www.ibestat.caib.es</a>
Canarias	<a href="http://www.gobiernodecanarias.org/istac">www.gobiernodecanarias.org/istac</a>
Cantabria	<a href="http://www.icane.es">www.icane.es</a>
Castilla y León	<a href="http://www.jcyl.es/estadistica">www.jcyl.es/estadistica</a>
Castilla - La Mancha	<a href="http://www.jccm.es/estadistica">www.jccm.es/estadistica</a>
Cataluña	<a href="http://www.idescat.cat">www.idescat.cat</a>
Comunitat Valenciana	<a href="http://www.ive.es">www.ive.es</a>
Extremadura	<a href="http://estadistica.gobex.es">http://estadistica.gobex.es</a>
Galicia	<a href="http://www.ige.xunta.es">www.ige.xunta.es</a>
Comunidad de Madrid	<a href="http://www.madrid.org/iestadis">www.madrid.org/iestadis</a>
Región de Murcia	<a href="http://econet.carm.es">http://econet.carm.es</a>
La Rioja	<a href="http://www.larioja.org">www.larioja.org</a>