

8 May 2015

Industrial Production Index (IPI). Base 2010
March 2015. *Provisional data*

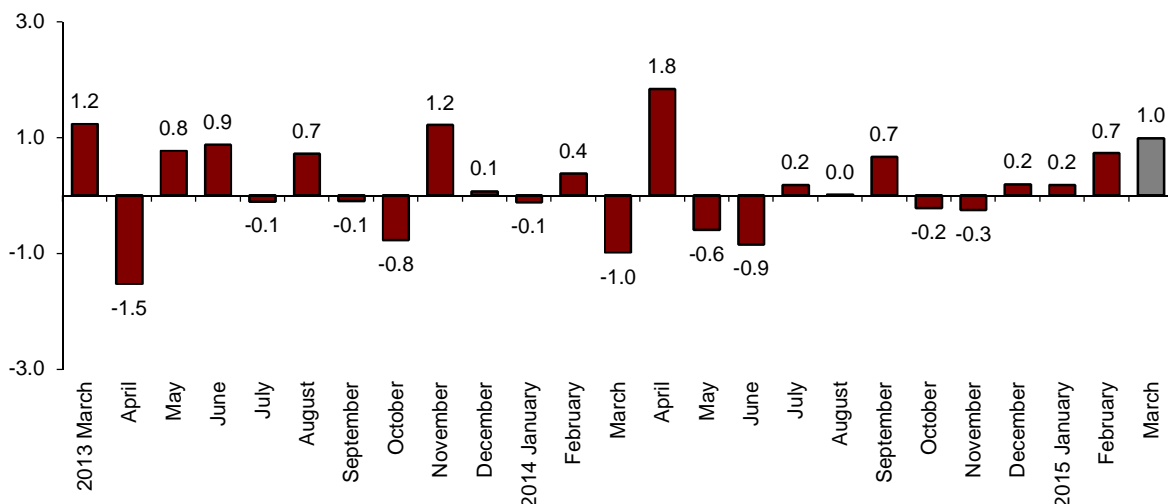
The monthly variation of the Industrial Production Index stands at 1.0%, after adjusting the seasonal and calendar effects

The annual rate of the Industrial Production Index stands at 2.9% in the series adjusted for the seasonal and calendar effects and at 4.8% in the original series

Monthly evolution of the Industrial Production

After adjusting the seasonal and calendar effects, the monthly variation of the Industrial Production Index (IPI) between March and February 2015 stood at 1.0%. This rate was three tenths higher than that registered in February.

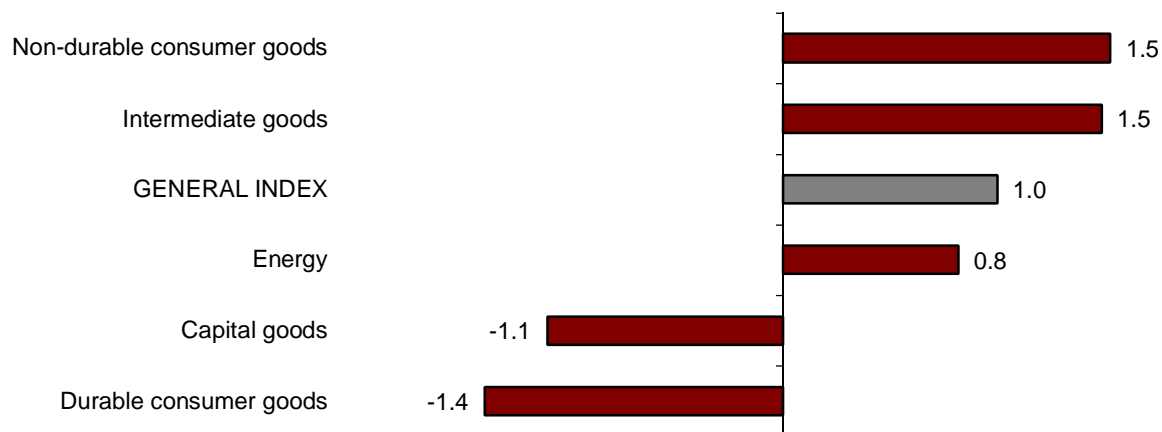
General Industrial Production Index
Adjusted for seasonal and calendar effects. Monthly rate



By industrial sectors, Non-durable consumer goods (1.5%), Intermediate goods (1.5%) and Energy (0.8%) registered positive monthly variation rates.

In turn, Durable consumer goods (-1.4%) and Capital goods (-1.1%) registered a negative monthly rate.

Industrial Production Indices: General and by economic destination of the goods. Adjusted for seasonal and calendar effects. Monthly rate



A more detailed analysis showed the activities that registered the highest and lowest monthly rates in the month of March.

Activities with the highest annual rates of the Industrial Production Indices adjusted for seasonal and calendar effects

Activity (Division from CNAE 2009)	Monthly rate (%)
Manufacture of garments	11.3
Manufacture of wood and of products of wood and cork, except furniture; basketmaking and wickerwork	4.3
Manufacture of metal products, except machinery and equipment	3.3

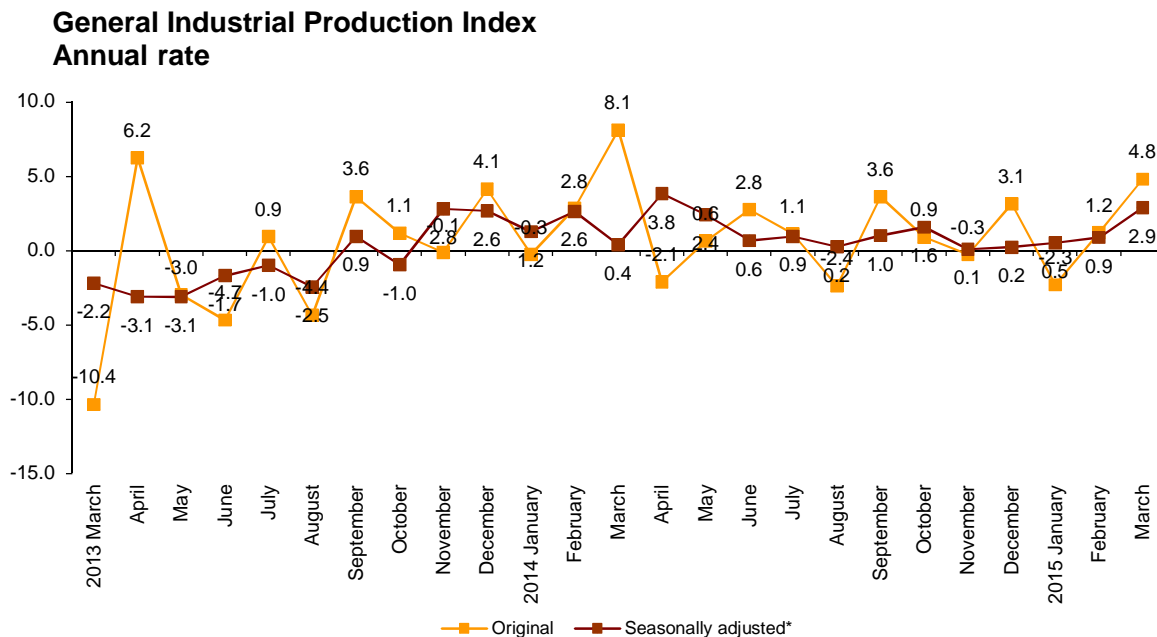
Activities with the lowest annual rates of the Industrial Production Indices adjusted for seasonal and calendar effects

Activity (Division from CNAE 2009)	Monthly rate (%)
Extraction of anthracite, coal and lignite	-39.7
Repair and installation of machinery and equipment	-5.1
Manufacture of machinery and equipment n.e.c.	-4.7

Annual evolution of the Industrial Production

After adjusting the seasonal and calendar effects, the Industrial Production Index (IPI) registered a variation of 2.9% in March, as compared with the same month of the previous year. This rate was 2 points higher than that registered in February.

The original series of the Industrial Production Index recorded an annual variation of 4.8%. This rate was 3.6 points higher than that of February.



After adjusting the seasonal and calendar effects, all sectors registered positive annual rates.

Intermediate goods (4.3%), Durable consumer goods (2.5%) and Energy (2.2%) registered the greatest positive annual variation rate, after adjusting the seasonal and calendar effects.

Annual rates of the Industrial Production Indices: General and by economic destination of the goods

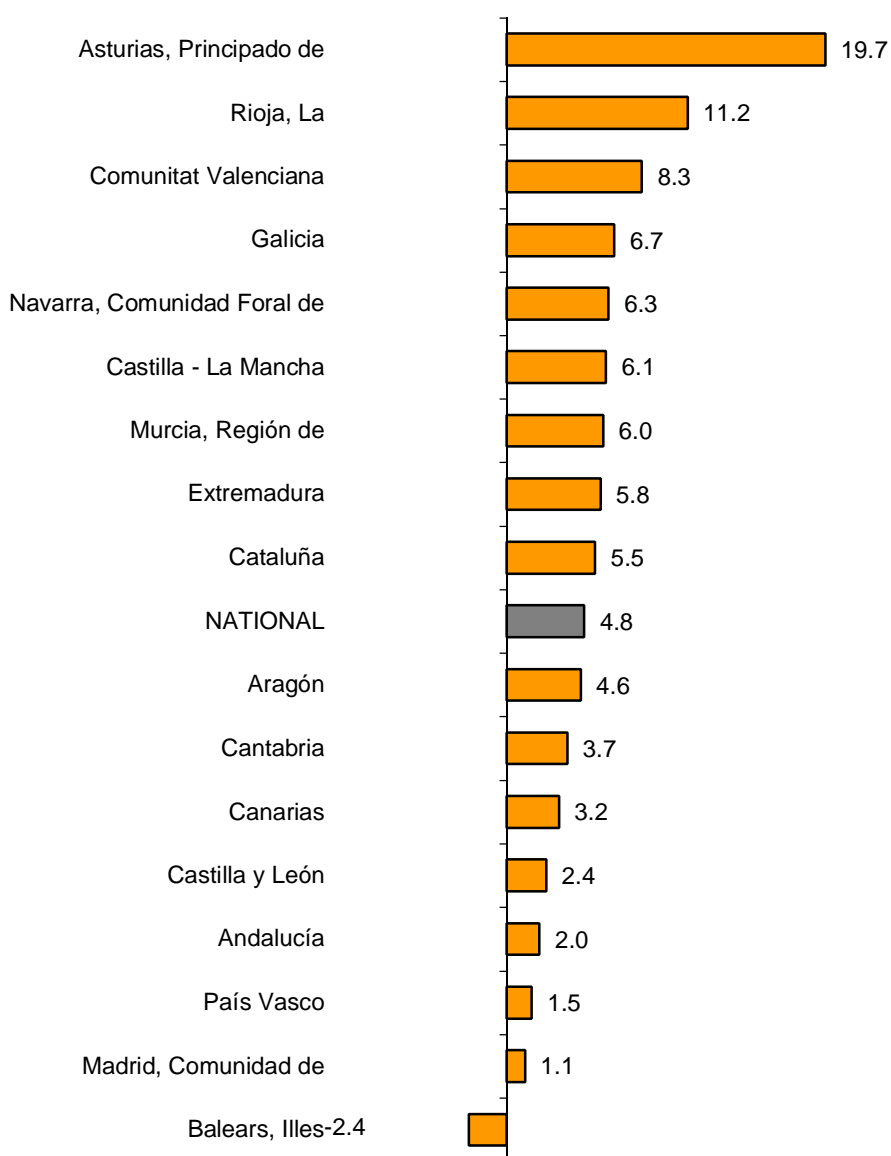
	Original index	Seasonally adjusted index
	Annual rate(%)	Annual rate (%)
GENERAL INDEX	4.8	2.9
1. Consumer goods	5.8	3.6
1.1. Durable consumer goods	5.9	2.5
1.2. Non-durable consumer goods	5.8	2.0
2. Capital goods	3.7	1.3
3. Intermediate goods	6.1	4.3
4. Energy	2.4	2.2

Results by Autonomous Community. Annual variation rates of the Industrial Production. Original series

All Autonomous Communities registered a positive annual rate of the Industrial Production, except in Illes Balears (-2.4%)

The greatest increases were registered in Principado de Asturias (19.7%), La Rioja (11.2%), and Comunitat Valenciana (8.3%).

General indices: national and by Autonomous Community Annual rate of the Industrial Production Index



Industrial Production Indices. Base 2010

March 2015

Provisional data

1. General index by economic destination of the goods. Adjusted for seasonal and calendar effects

	Index	Rate (%)		
		Monthly	Annual	Year-to-date average
GENERAL INDEX	93.6	1.0	2.9	1.4
1. Consumer goods	95.1	2.6	3.6	-0.2
1.1. Durable consumer goods	68.0	-1.4	2.5	1.6
1.2. Non-durable consumer goods	97.4	1.5	2.0	0.0
2. Capital goods	93.8	-1.1	1.3	2.0
3. Intermediate goods	91.4	1.5	4.3	2.3
4. Energy	94.8	0.8	2.2	1.9

2. General index by economic destination of the goods. Adjusted for calendar effects

	Index	Rate (%)	
		Annual	Year-to-date average
GENERAL INDEX	99.2	3.3	1.5
1. Consumer goods	100.0	4.2	-0.3
1.1. Durable consumer goods	72.2	2.9	2.2
1.2. Non-durable consumer goods	103.2	4.6	-0.5
2. Capital goods	103.1	1.6	2.5
3. Intermediate goods	98.8	4.7	2.3
4. Energy	95.3	2.3	2.0

3. General index by economic destination of the goods. Original indices

	Index	Rate (%)		Repercussion Annual
		Annual	Year-to-date average	
GENERAL INDEX	99.9	4.8	1.3	
1. Consumer goods	100.2	5.8	-0.8	1.593
1.1. Durable consumer goods	73.3	5.9	2.3	0.124
1.2. Non-durable consumer goods	103.3	5.8	-1.0	1.470
2. Capital goods	104.3	3.7	2.4	0.811
3. Intermediate goods	99.6	6.1	2.0	1.939
4. Energy	95.4	2.4	1.8	0.445

4. General index by branch of activity (CNAE 2009)

	Index	Rate (%)		Repercussion
		Annual	Year-to-date average	Annual
GENERAL INDEX	99.9	4.8	1.3	
B. Mining and quarrying industries	52.2	-1.8	-3.5	-0.011
Extraction of anthracite, coal and lignite	22.8	-43.6	-32.1	-0.049
National crude petroleum and natural gas
Extraction of metallic ores
Other mining and quarrying	59.4	8.0	5.0	0.040
C. Manufacturing industry	101.7	5.2	1.2	4.328
Food Industry	104.5	5.2	-2.4	0.653
Manufacture of beverages.	98.0	9.4	2.3	0.309
Tobacco industry.	95.7	-14.6	-12.9	-0.052
Textile industry	111.7	11.6	8.0	0.134
Manufacture of garments	100.6	10.4	-8.0	0.132
Leather and footwear industry	113.1	0.7	-7.0	0.007
Manufacture of wood and of products of wood and cork, except furniture; basketm	88.6	10.8	4.0	0.134
Manufacture of paper and paper-products	103.9	2.9	0.6	0.082
Graphic arts and reproduction of recorded media	80.0	1.3	-1.2	0.024
Manufacture of coke and refined petroleum products	110.8	1.1	3.6	0.022
Chemical Industry	105.5	4.7	2.5	0.298
Manufacture of pharmaceutical products	114.9	5.6	2.8	0.207
Rubber and plastic material transformation industry	112.2	9.9	5.3	0.450
Manufacture of other non-metallic ore products	78.8	4.7	1.3	0.193
Metallurgy; manufacture of iron, steel and ferro-alloy products	107.9	0.8	-1.3	0.034
Manufacture of metal products, except machinery and equipment	91.9	3.4	-1.3	0.281
Manufacture of computers, electronic and optical products	91.6	15.3	12.5	0.182
Manufacture of electrical material and equipment	95.8	5.8	0.0	0.177
Manufacture of machinery and equipment n.e.c.	108.5	-0.8	-3.6	-0.040
Manufacture of motor vehicles, trailers and semi-trailers	132.7	12.2	9.8	0.985
Manufacture of other transport equipment	82.8	-10.6	-7.4	-0.282
Manufacture of furniture.	73.0	11.3	5.1	0.145
Other manufacturing industries	118.5	5.0	1.2	0.066
Repair and installation of machinery and equipment	87.9	9.5	9.9	0.188
D. Supply of electrical energy, gas, steam and air conditioning	95.6	3.9	3.1	0.539
E. Water supply, activities, waste management and decontamination*	90.2	-2.8	-5.8	-0.068

* It only includes Water collection, treatment and supply

(..) Data not available due to statistical secrecy.

5. General Industrial Production Indices: national and by Autonomous Community

	Index	Rate (%)	
		Annual	Year-to-date average
NACIONAL	99.9	4.8	1.3
Andalucía	93.8	2.0	-2.0
Aragón	106.5	4.6	0.9
Asturias, Principado de	103.3	19.7	12.8
Balears, Illes	87.4	-2.4	5.5
Canarias	89.3	3.2	1.2
Cantabria	103.9	3.7	-2.2
Castilla y León	99.9	2.4	-1.8
Castilla-La Mancha	92.9	6.1	2.3
Cataluña	108.6	5.5	1.8
Comunitat Valenciana	106.2	8.3	5.1
Extremadura	86.1	5.8	2.1
Galicia	95.6	6.7	-0.4
Madrid, Comunidad de	87.9	1.1	0.4
Murcia, Región de	90.7	6.0	3.3
Navarra, Comunidad Foral de	104.3	6.3	0.3
País Vasco	97.4	1.5	-0.8
Rioja, La	109.2	11.2	6.6

More detailed information by Autonomous Community may be obtained at:

Andalucía	www.juntadeandalucia.es/institutodeestadisticaycartografia
Aragón	www.aragon.es/iaest/ipi
Principado de Asturias	www.sadei.es
Illes Balears	www.ibestat.caib.es
Canarias	www.gobiernodecanarias.org/istac
Cantabria	www.icane.es
Castilla y León	www.jcyl.es/estadistica
Castilla - La Mancha	www.jccm.es/estadistica
Cataluña	www.idescat.cat
Comunitat Valenciana	www.ive.es
Extremadura	http://estadistica.gobex.es
Galicia	www.ige.xunta.es
Comunidad de Madrid	www.madrid.org/iestadis
Región de Murcia	www.carm.es/econet
La Rioja	www.larioja.org

For further information see INEbase - www.ine.es/en/

All press releases at: www.ine.es/en/prensa/prensa_en.htm

Press Office: Telephone numbers: 91 583 93 63 / 94 08 – Fax: 91 583 90 87 - gprensa@ine.es

Information Area: Telephone number: 91 583 91 00 – Fax: 91 583 91 58 – www.ine.es/infoine/?L=1