

5 June 2015

Industrial Production Index (IPI). Base 2010
April 2015. *Provisional data*

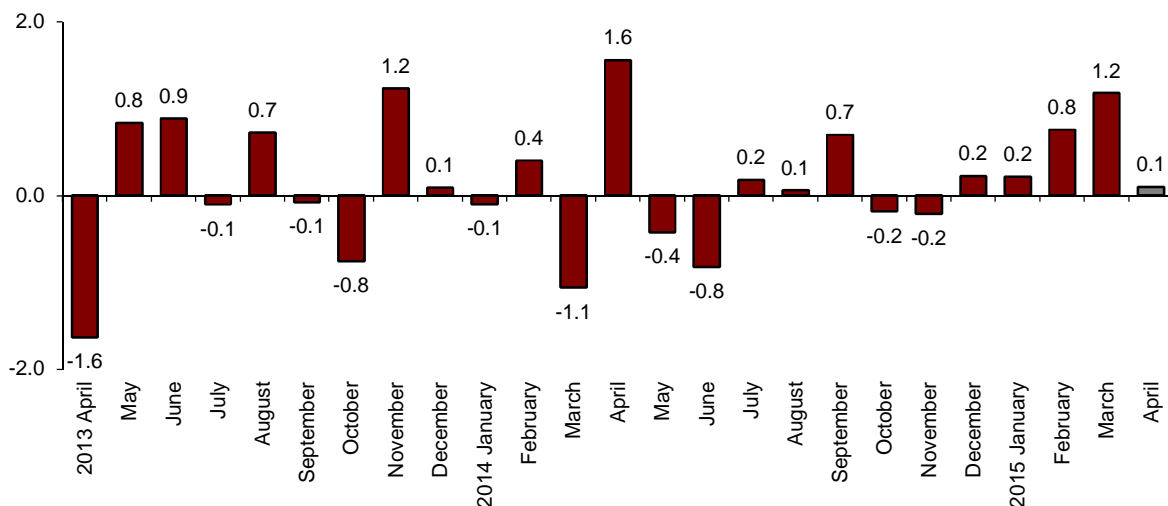
The monthly variation of the Industrial Production Index stands at 0.1%, after adjusting the seasonal and calendar effects

The annual rate of the Industrial Production Index stands at 1.8% in the series adjusted for the seasonal and calendar effects and at 2.7% in the original series

Monthly evolution of the Industrial Production

After adjusting the seasonal and calendar effects, the monthly variation of the Industrial Production Index (IPI) between April and March 2015 stood at 0.1%. This rate was 1.1 points lower than that registered in March.

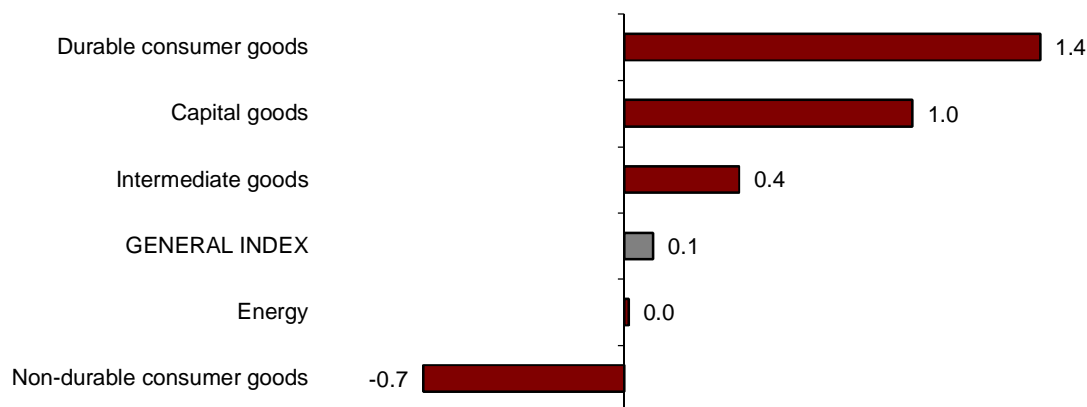
**General Industrial Production Index
Adjusted for seasonal and calendar effects. Monthly rate**



By industrial sectors, Durable consumer goods (1.4%), Capital goods (1.0%) and Intermediate goods (0.4%) registered positive monthly variation rates.

In turn, Non-durable consumer goods (−0.7%) is the only sector to register a negative monthly rate.

Industrial Production Indices: General and by economic destination of the goods. Adjusted for seasonal and calendar effects. Monthly rate



A more detailed analysis showed the activities that registered the highest and lowest monthly rates in the month of April.

Activities with the highest annual rates of the Industrial Production Indices adjuted for seasonal and calendar effects

Activity (Division from CNAE 2009)	Monthly rate (%)
Extraction of anthracite, coal and lignite	36.5
Manufacture of electrical material and equipment	5.7
Other mining and quarrying	4.3

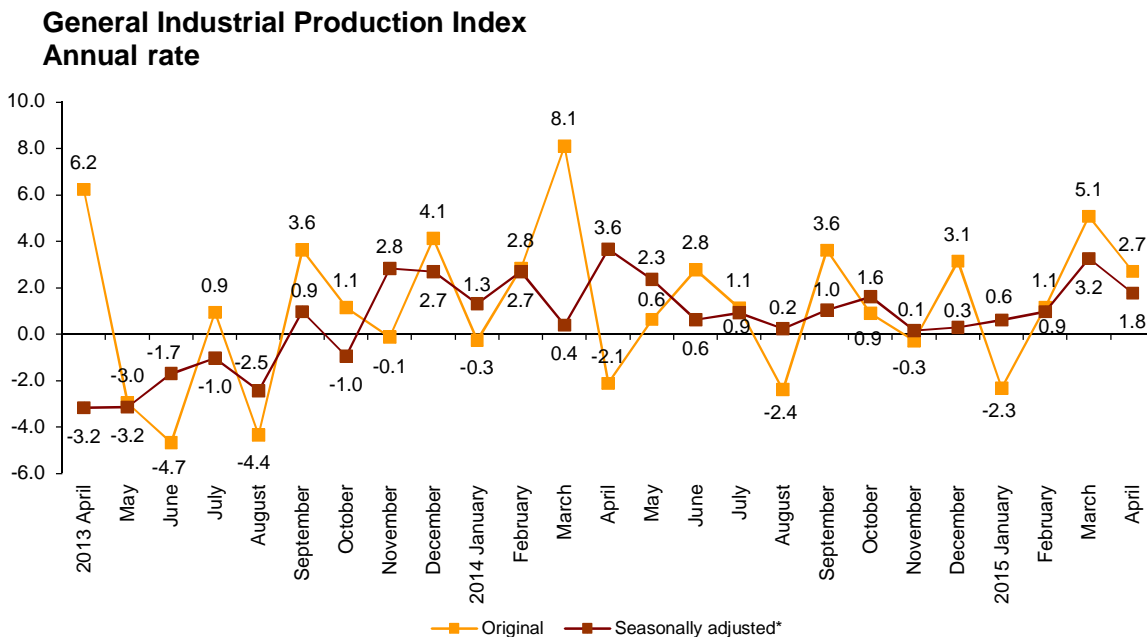
Activities with the lowest annual rates of the Industrial Production Indices adjuted for seasonal and calendar effects

Activity (Division from CNAE 2009)	Monthly rate (%)
Manufacture of garments	-12.5
Tobacco industry	-11.8
Manufacture of wood and of products of wood and cork, except furniture; basketmaking and wickerwork	-4.8

Annual evolution of the Industrial Production

After adjusting the seasonal and calendar effects, the Industrial Production Index (IPI) registered a variation of 1.8% in April, as compared with the same month of the previous year. This rate was 1.4 points lower than that registered in March.

The original series of the Industrial Production Index recorded an annual variation of 2.7%. This rate was 2.4 points lower than that of March.



After adjusting the seasonal and calendar effects, all sectors registered positive annual rates.

Intermediate goods (4.2%), Durable consumer goods (3.5%) and Capital goods (1.2%) registered the greatest positive annual variation rate.

**Annual rates of the Industrial Production Indices:
General and by economic destination of the goods**

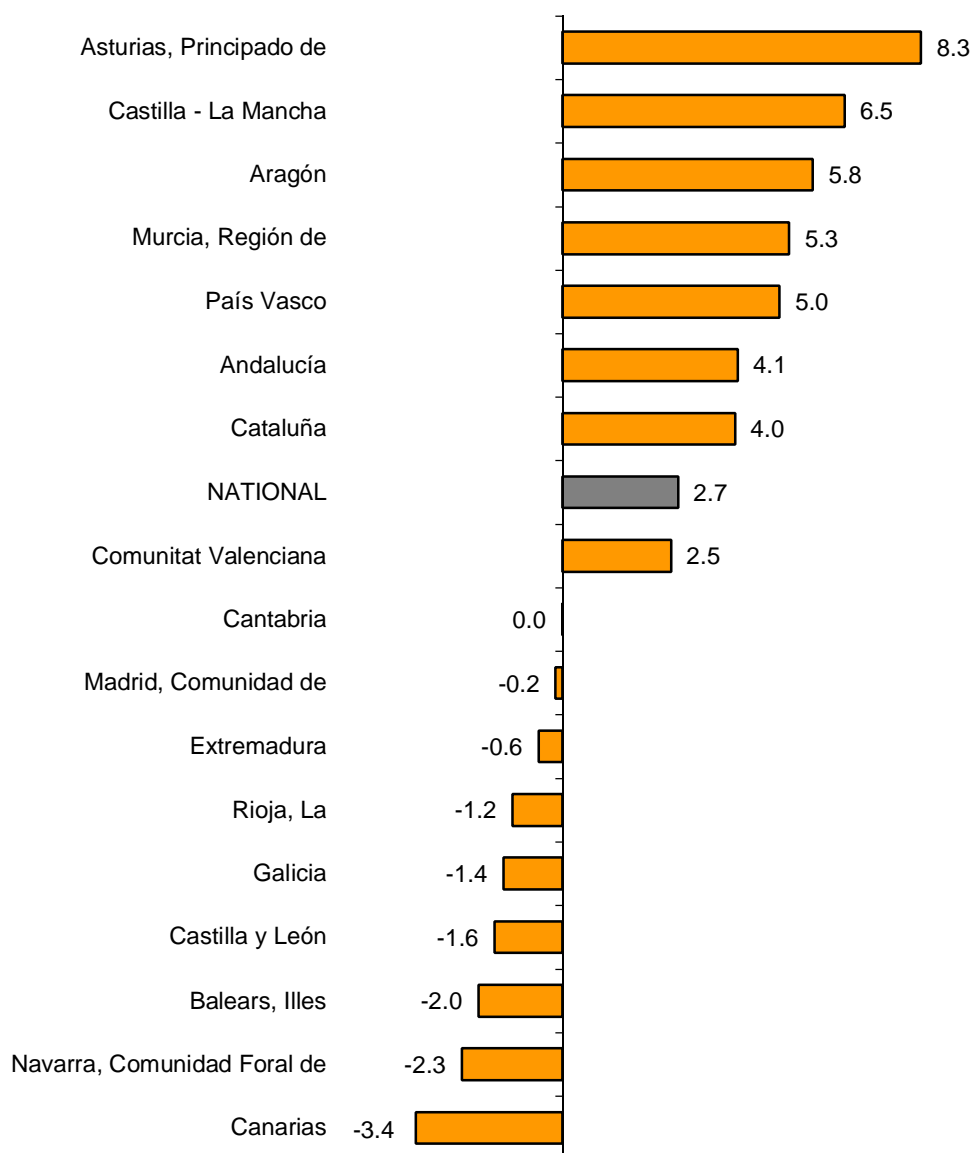
	Original index	Seasonally adjusted index
	Annual rate(%)	Annual rate (%)
GENERAL INDEX	2.7	1.8
1. Consumer goods	1.6	0.2
1.1. Durable consumer goods	4.6	3.5
1.2. Non-durable consumer goods	1.4	0.4
2. Capital goods	1.8	1.2
3. Intermediate goods	5.2	4.2
4. Energy	0.9	0.2

Results by Autonomous Community. Annual variation rates of the Industrial Production. Original series

The annual rates of the original series of the Industrial Production increased in eight Autonomous Communities. The greatest increases were registered in Principado de Asturias (8.3%), Castilla-La Mancha (6.5%) and Aragón (5.8%).

In turn, the greatest decreases were registered in Canarias (-3.4%), Comunidad Foral de Navarra (-2.3%) and Illes Balears (-2.0%).

General indices: national and by Autonomous Community Annual rate of the Industrial Production Index



Industrial Production Indices. Base 2010

April 2015

Provisional data

1. General index by economic destination of the goods. Adjusted for seasonal and calendar effects

	Index	Rate (%)		
		Monthly	Annual	Year-to-date average
GENERAL INDEX	94.0	0.1	1.8	1.6
1. Consumer goods	94.3	-1.2	0.2	0.1
1.1. Durable consumer goods	69.9	1.4	3.5	2.5
1.2. Non-durable consumer goods	97.0	-0.7	0.4	0.2
2. Capital goods	94.9	1.0	1.2	1.8
3. Intermediate goods	92.4	0.4	4.2	3.1
4. Energy	94.8	0.0	0.2	1.5

2. General index by economic destination of the goods. Adjusted for calendar effects

	Index	Rate (%)	
		Annual	Year-to-date average
GENERAL INDEX	92.6	2.3	1.8
1. Consumer goods	91.3	0.4	0.0
1.1. Durable consumer goods	68.6	4.7	3.2
1.2. Non-durable consumer goods	94.0	0.0	-0.3
2. Capital goods	95.0	1.9	2.3
3. Intermediate goods	94.0	4.7	3.1
4. Energy	88.9	0.4	1.6

3. General index by economic destination of the goods. Original indices

	Index	Rate (%)		Repercussion Annual
		Annual	Year-to-date average	
GENERAL INDEX	92.2	2.7	1.7	
1. Consumer goods	91.5	1.6	-0.1	0.458
1.1. Durable consumer goods	67.7	4.6	3.2	0.096
1.2. Non-durable consumer goods	94.3	1.4	-0.3	0.362
2. Capital goods	94.0	1.8	2.2	0.395
3. Intermediate goods	93.5	5.2	3.0	1.667
4. Energy	89.1	0.9	1.5	0.161

4. General index by branch of activity (CNAE 2009)

	Index	Rate (%)		Repercussion
		Annual	Year-to-date average	Annual
GENERAL INDEX	92.2	2.7	1.7	
B. Mining and quarrying industries	54.5	7.1	-1.0	0.046
Extraction of anthracite, coal and lignite	30.4	-20.3	-29.5	-0.023
National crude petroleum and natural gas
Extraction of metallic ores
Other mining and quarrying	60.3	14.4	7.2	0.072
C. Manufacturing industry	93.8	3.1	1.8	2.582
Food Industry	96.4	2.0	-1.3	0.253
Manufacture of beverages.	99.1	1.8	2.1	0.068
Tobacco industry.	68.7	-23.9	-15.3	-0.073
Textile industry	101.6	3.2	5.6	0.039
Manufacture of garments	67.1	-21.4	-10.6	-0.269
Leather and footwear industry	91.4	4.7	-4.4	0.035
Manufacture of wood and of products of wood and cork, except furniture; basketm	86.3	1.7	3.9	0.023
Manufacture of paper and paper-products	100.5	0.5	0.5	0.015
Graphic arts and reproduction of recorded media	73.6	-4.0	-1.0	-0.077
Manufacture of coke and refined petroleum products	115.2	6.4	4.1	0.136
Chemical Industry	100.8	3.7	3.0	0.240
Manufacture of pharmaceutical products	106.1	9.2	4.3	0.324
Rubber and plastic material transformation industry	101.9	5.1	5.2	0.235
Manufacture of other non-metallic ore products	76.4	6.8	2.9	0.281
Metallurgy; manufacture of iron, steel and ferro-alloy products	99.3	0.8	-0.8	0.033
Manufacture of metal products, except machinery and equipment	84.3	1.2	-0.4	0.097
Manufacture of computers, electronic and optical products	73.7	7.8	11.5	0.085
Manufacture of electrical material and equipment	86.3	11.5	2.9	0.322
Manufacture of machinery and equipment n.e.c.	99.1	-3.6	-3.9	-0.175
Manufacture of motor vehicles, trailers and semi-trailers	116.9	6.3	8.9	0.501
Manufacture of other transport equipment	72.0	0.0	-6.0	0.000
Manufacture of furniture.	68.9	6.7	6.1	0.090
Other manufacturing industries	117.1	11.1	3.8	0.143
Repair and installation of machinery and equipment	86.4	12.8	10.9	0.257
D. Supply of electrical energy, gas, steam and air conditioning	83.3	-2.2	1.9	-0.307
E. Water supply, activities, waste management and decontamination*	109.6	13.3	-0.9	0.360

* It only includes Water collection, treatment and supply

(..) Data not available due to statistical secrecy.

5. General Industrial Production Indices: national and by Autonomous Community

	Index	Rate (%)	
		Annual	Year-to-date average
NACIONAL	92.2	2.7	1.7
Andalucía	84.9	4.1	-0.3
Aragón	100.8	5.8	2.2
Asturias, Principado de	91.9	8.3	11.7
Balears, Illes	81.0	-2.0	3.7
Canarias	84.0	-3.4	0.0
Cantabria	95.5	0.0	-1.6
Castilla y León	89.7	-1.6	-1.8
Castilla-La Mancha	89.9	6.5	3.4
Cataluña	100.5	4.0	2.3
Comunitat Valenciana	100.7	2.5	4.6
Extremadura	76.9	-0.6	1.6
Galicia	86.2	-1.4	-0.3
Madrid, Comunidad de	81.1	-0.2	0.2
Murcia, Región de	89.5	5.3	3.8
Navarra, Comunidad Foral de	94.3	-2.3	-0.3
País Vasco	89.2	5.0	0.6
Rioja, La	90.5	-1.2	4.8

More detailed information by Autonomous Community may be obtained at:

Andalucía	www.juntadeandalucia.es/institutodeestadisticaycartografia
Aragón	www.aragon.es/iaest/ipi
Principado de Asturias	www.sadei.es
Illes Balears	www.ibestat.caib.es
Canarias	www.gobiernodecanarias.org/istac
Cantabria	www.icane.es
Castilla y León	www.jcyl.es/estadistica
Castilla - La Mancha	www.jccm.es/estadistica
Cataluña	www.idescat.cat
Comunitat Valenciana	www.ive.es
Extremadura	http://estadistica.gobex.es
Galicia	www.ige.xunta.es
Comunidad de Madrid	www.madrid.org/iestadis
Región de Murcia	www.carm.es/econet
La Rioja	www.larioja.org

For further information see INEbase - www.ine.es/en/

All press releases at: www.ine.es/en/prensa/prensa_en.htm

Press Office: Telephone numbers: 91 583 93 63 / 94 08 – Fax: 91 583 90 87 - gprensa@ine.es

Information Area: Telephone number: 91 583 91 00 – Fax: 91 583 91 58 – www.ine.es/infoine/?L=1