

05 July 2018

Industrial Production Indices (IPI). Base 2015
May 2018. *Provisional data*

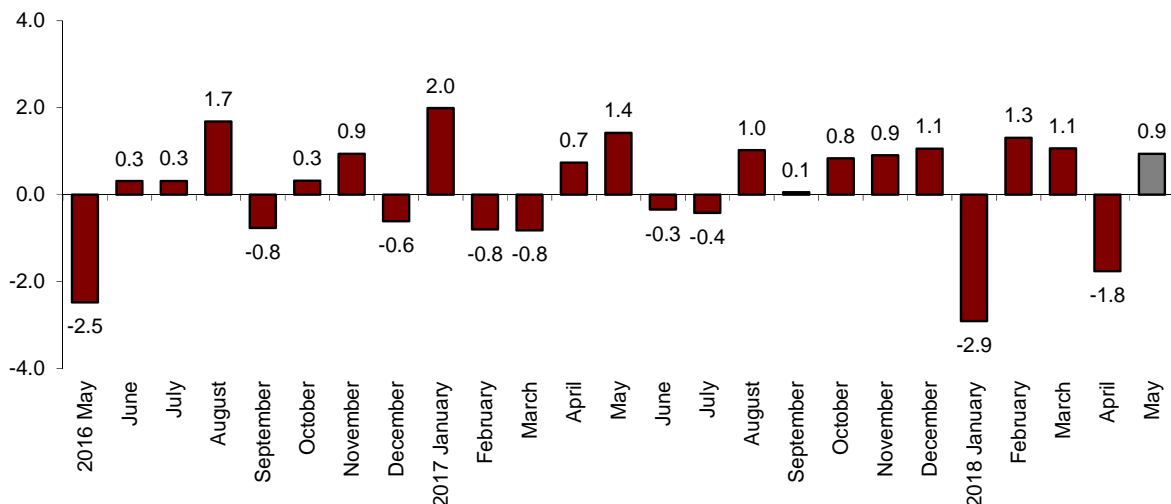
The monthly variation of the Industrial Production Index stands at 0.9%, after adjusting for seasonal and calendar effects

The annual rate of the Industrial Production Index stands at 1.6%, both in the series adjusted for seasonal and calendar effects and in the original series

Monthly evolution of industrial production

After adjusting for seasonal and calendar effects, the monthly variation of the Industrial Production Index (IPI) between May and April stood at 0.9%. This rate is 2.7 points higher than that observed in April.

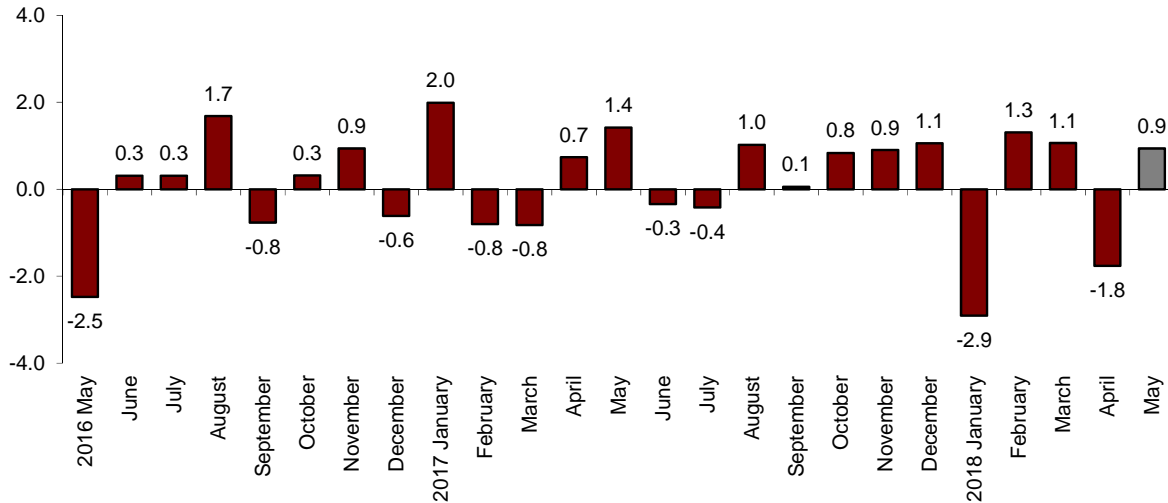
General Industrial Production Index
Adjusted for seasonal and calendar effects. Monthly rate



By sector, all of them showed positive monthly rates, except for *Energy* (-1.4%).

Durable consumer goods (2.1%), *Intermediate goods* (1.9%) and *Capital goods* (1.7%) recorded the largest increases.

General Industrial Production Index Adjusted for seasonal and calendar effects. Monthly rate



A more detailed analysis shows the branches of activity with the highest and lowest monthly rates in May.

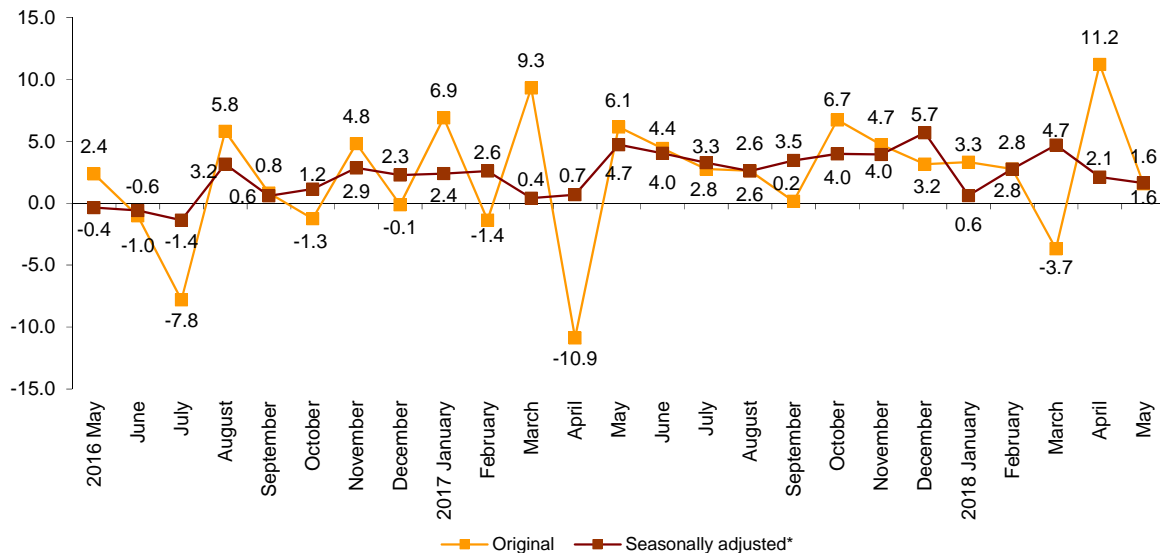
| Activities with the highest annual rates of the Industrial Production Indices adjusted for seasonal and calendar effects | |
|--------------------------------------------------------------------------------------------------------------------------|------------------|
| Activity (Division from CNAE 2009) | Monthly rate (%) |
| Manufacture of other transport equipment | 6.8 |
| Manufacture of computers, electronic and optical products | 5.8 |
| Manufacture of beverages | 5.6 |
| | |
| | |
| Activities with the lowest annual rates of the Industrial Production Indices adjusted for seasonal and calendar effects | |
| Activity (Division from CNAE 2009) | Monthly rate (%) |
| Extraction of anthracite, coal and lignite | -5.5 |
| Manufacture of pharmaceutical products | -5.0 |
| Tobacco industry | -3.9 |

Annual evolution of industrial production

After adjusting for seasonal and calendar effects, the Industrial Production Index registered a variation of 1.6% in May, as compared with the same month of the previous year. This rate is 0.5 points lower than that recorded in April.

The original series of the IPI also experienced an annual variation of 1.6%. This rate is 9.6 points lower than in April.

General Industrial Production Index Annual rate



For seasonally and calendar adjusted indices, *Durable consumer goods* (-3.2%) and *Non-durable consumer goods* (-1.1%) presented negative annual rates.

In turn, *Intermediate goods* (4.0%) and *Capital goods* (3.8%) recorded the greatest increases.

Annual rates of the Industrial Production Indices: General and by economic destination of the goods

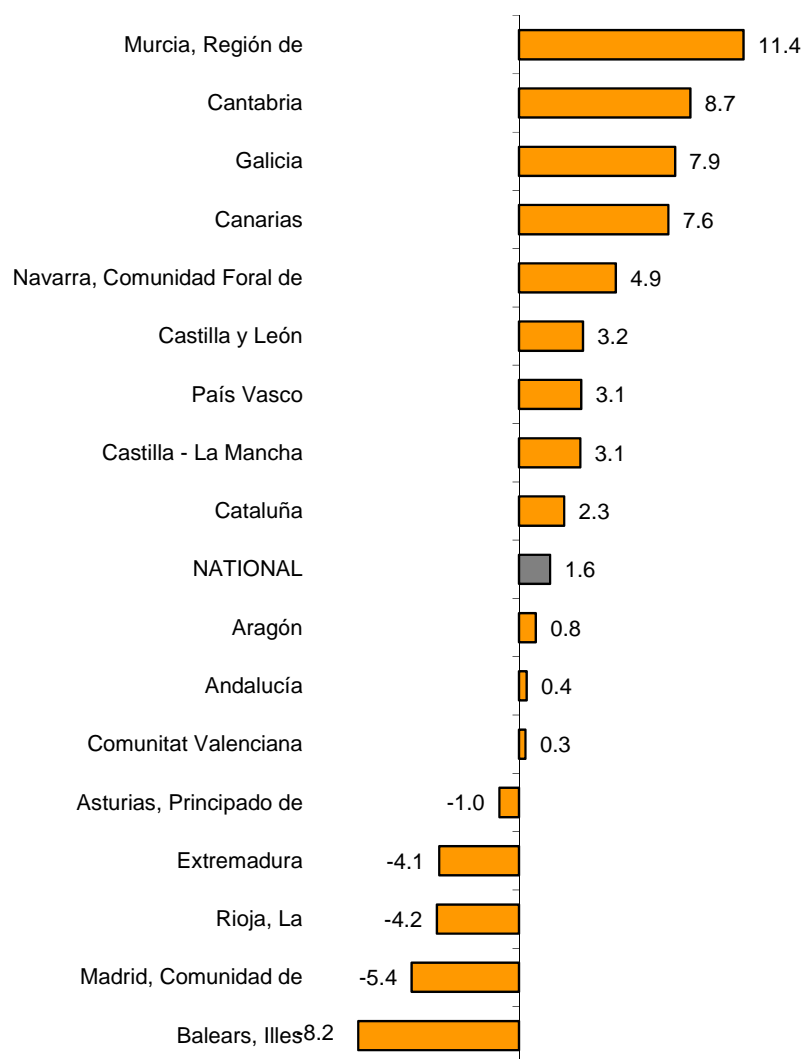
| | Original index | Seasonally adjusted index |
|---------------------------------|----------------|---------------------------|
| | Annual rate(%) | Annual rate (%) |
| GENERAL INDEX | 1.6 | 1.6 |
| 1. Consumer goods | -2.6 | -2.4 |
| 1.1. Durable consumer goods | -2.8 | -3.2 |
| 1.2. Non-durable consumer goods | -2.6 | -1.1 |
| 2. Capital goods | 3.9 | 3.8 |
| 3. Intermediate goods | 4.1 | 4.0 |
| 4. Energy | 0.0 | 0.2 |

Results by Autonomous Communities. Annual variation rates of industrial production. Original series

In May, the annual rate of industrial production was positive in 12 Autonomous Communities. Región de Murcia (11.4%), Cantabria (8.7%) and Galicia (7.9%) registered the greatest increases.

In turn, the largest decreases were registered in Illes Balears (-8,2%), Comunidad de Madrid (-5,4%) and La Rioja (-4,2%).

General indices: national and by Autonomous Community Annual rate of the Industrial Production Index



For further information see **INEbase**: www.ine.es/en/ Twitter: [@es_ine](https://twitter.com/es_ine)

All press releases at: www.ine.es/en/prensa/prensa_en.htm

Press office: Telephone numbers: (+34) 91 583 93 63 /94 08 – gprensa@ine.es

Information Area: Telephone number: (+34) 91 583 91 00 – www.ine.es/infoine/?L=1

Industrial Production Indices. Base 2015

May 2018

Provisional data

1. General index by economic destination of the goods. Adjusted for seasonal and calendar effects

| | Index | Rate (%) | | |
|---------------------------------|--------------|------------|------------|----------------------|
| | | Monthly | Annual | Year-to-date average |
| GENERAL INDEX | 106.7 | 0.9 | 1.6 | 2.4 |
| 1. Consumer goods | 102.4 | 0.0 | -2.4 | 0.3 |
| 1.1. Durable consumer goods | 106.5 | 2.1 | -3.2 | -0.9 |
| 1.2. Non-durable consumer goods | 102.4 | 0.1 | -1.1 | 0.5 |
| 2. Capital goods | 111.8 | 1.7 | 3.8 | 3.8 |
| 3. Intermediate goods | 111.0 | 1.9 | 4.0 | 3.6 |
| 4. Energy | 99.4 | -1.4 | 0.2 | 1.8 |

2. General index by economic destination of the goods. Adjusted for calendar effects

| | Index | Rate (%) | |
|---------------------------------|--------------|------------|----------------------|
| | | Annual | Year-to-date average |
| GENERAL INDEX | 111.6 | 1.6 | 2.2 |
| 1. Consumer goods | 106.8 | -2.6 | 0.3 |
| 1.1. Durable consumer goods | 116.6 | -2.8 | -1.1 |
| 1.2. Non-durable consumer goods | 106.2 | -2.6 | 0.1 |
| 2. Capital goods | 122.2 | 3.9 | 3.5 |
| 3. Intermediate goods | 120.7 | 4.1 | 3.3 |
| 4. Energy | 93.9 | 0.0 | 1.7 |

3. General index by economic destination of the goods. Original indices

| | Index | Rate (%) | | Repercussion |
|---------------------------------|--------------|------------|----------------------|--------------|
| | | Annual | Year-to-date average | Annual |
| GENERAL INDEX | 113.2 | 1.6 | 2.7 | |
| 1. Consumer goods | 108.7 | -2.6 | 0.8 | -0.673 |
| 1.1. Durable consumer goods | 119.1 | -2.8 | -0.5 | -0.062 |
| 1.2. Non-durable consumer goods | 107.9 | -2.6 | 0.9 | -0.611 |
| 2. Capital goods | 124.2 | 3.9 | 4.1 | 0.932 |
| 3. Intermediate goods | 122.4 | 4.1 | 3.9 | 1.313 |
| 4. Energy | 94.4 | 0.0 | 1.9 | -0.008 |

4. General index by branch of activity (CNAE 2009)

| | Index | Rate (%) | | Repercussion |
|---------------------------------------------------------------------------------|--------------|-------------|----------------------|---------------|
| | | Annual | Year-to-date average | Annual |
| GENERAL INDEX | 113.2 | 1.6 | 2.7 | |
| B. Mining and quarrying industries | 96.6 | -8.7 | 4.1 | -0.057 |
| Extraction of anthracite, coal and lignite | .. | .. | .. | .. |
| National crude petroleum and natural gas | .. | .. | .. | .. |
| Extraction of metallic ores | .. | .. | .. | .. |
| Other mining and quarrying | 102.3 | -6.8 | 0.7 | -0.038 |
| C. Manufacturing industry | 118.4 | 2.2 | 3.0 | 1.840 |
| Food Industry | 105.4 | 0.5 | 0.9 | 0.057 |
| Manufacture of beverages. | 109.0 | -4.2 | -2.2 | -0.141 |
| Tobacco industry. | .. | .. | .. | .. |
| Textile industry | 115.9 | -2.3 | 1.5 | -0.026 |
| Manufacture of garments | 139.8 | -1.0 | -0.9 | -0.012 |
| Leather and footwear industry | 89.5 | -3.4 | -1.4 | -0.027 |
| Manufacture of wood and of products of wood and cork, except furniture; basketm | 137.5 | 11.2 | 11.6 | 0.155 |
| Manufacture of paper and paper-products | 110.4 | 0.0 | 0.6 | 0.000 |
| Graphic arts and reproduction of recorded media | 94.5 | -7.4 | -0.5 | -0.110 |
| Manufacture of coke and refined petroleum products | 115.5 | 9.7 | 5.4 | 0.219 |
| Chemical Industry | 115.1 | 3.4 | 3.3 | 0.209 |
| Manufacture of pharmaceutical products | 115.9 | -9.4 | 4.1 | -0.393 |
| Rubber and plastic material transformation industry | 124.7 | 2.7 | 3.1 | 0.136 |
| Manufacture of other non-metallic ore products | 125.0 | 2.2 | 2.0 | 0.091 |
| Metallurgy; manufacture of iron, steel and ferro-alloy products | 120.1 | 3.7 | 3.3 | 0.130 |
| Manufacture of metal products, except machinery and equipment | 123.2 | 3.4 | 3.0 | 0.288 |
| Manufacture of computers, electronic and optical products | 119.0 | 16.4 | 6.8 | 0.158 |
| Manufacture of electrical material and equipment | 126.3 | 9.2 | 5.0 | 0.269 |
| Manufacture of machinery and equipment n.e.c. | 134.3 | 4.1 | 7.6 | 0.216 |
| Manufacture of motor vehicles, trailers and semi-trailers | 124.1 | 0.7 | 2.4 | 0.067 |
| Manufacture of other transport equipment | 122.7 | 9.9 | 3.3 | 0.271 |
| Manufacture of furniture. | 126.3 | 2.5 | 1.6 | 0.035 |
| Other manufacturing industries | 118.1 | 5.1 | 3.5 | 0.057 |
| Repair and installation of machinery and equipment | 126.4 | 6.2 | 8.4 | 0.182 |
| D. Supply of electrical energy, gas, steam and air conditioning | 90.3 | 0.1 | 2.8 | 0.013 |
| E. Water supply, activities, waste management and decontamination* | 101.3 | -8.2 | -7.0 | -0.232 |

* It only includes Water collection, treatment and supply

(..) Data not available due to statistical secrecy.

5. General Industrial Production Indices: national and by Autonomous Community

| | Index | Rate (%) | |
|-----------------------------|--------------|------------|----------------------|
| | | Annual | Year-to-date average |
| NACIONAL | 113.2 | 1.6 | 2.7 |
| Andalucía | 104.0 | 0.4 | 0.2 |
| Aragón | 116.7 | 0.8 | 3.2 |
| Asturias, Principado de | 108.7 | -1.0 | 3.4 |
| Balears, Illes | 103.6 | -8.2 | -3.9 |
| Canarias | 102.7 | 7.6 | 1.5 |
| Cantabria | 120.4 | 8.7 | 9.8 |
| Castilla y León | 110.8 | 3.2 | 3.2 |
| Castilla-La Mancha | 105.1 | 3.1 | 1.4 |
| Cataluña | 118.6 | 2.3 | 4.2 |
| Comunitat Valenciana | 114.3 | 0.3 | 0.4 |
| Extremadura | 99.7 | -4.1 | 1.1 |
| Galicia | 116.9 | 7.9 | 10.4 |
| Madrid, Comunidad de | 107.1 | -5.4 | 0.5 |
| Murcia, Región de | 116.2 | 11.4 | 4.1 |
| Navarra, Comunidad Foral de | 118.9 | 4.9 | 0.9 |
| País Vasco | 119.3 | 3.1 | 2.6 |
| Rioja, La | 99.4 | -4.2 | -0.1 |

More detailed information by Autonomous Community may be obtained at:

| | |
|------------------------|--------------------------------------------------------------------------------------------------------------------------------------------|
| Andalucía | www.juntadeandalucia.es/institutodeestadisticaycartografia |
| Aragón | www.aragon.es/iaest/ipi |
| Principado de Asturias | www.sadei.es |
| Illes Balears | www.ibestat.caib.es |
| Canarias | www.gobiernodecanarias.org/istac |
| Cantabria | www.icane.es |
| Castilla y León | www.jcyl.es/estadistica |
| Castilla - La Mancha | www.jccm.es/estadistica |
| Cataluña | www.idescat.cat |
| Comunitat Valenciana | www.ive.es |
| Extremadura | http://estadistica.juntaex.es |
| Galicia | www.ige.xunta.es |
| Comunidad de Madrid | www.madrid.org/iestadis |
| Región de Murcia | http://econet.carm.es |
| La Rioja | www.larioja.org |