

4 December 2015

Industrial Production Index (IPI). Base 2010
October 2015. *Provisional data*

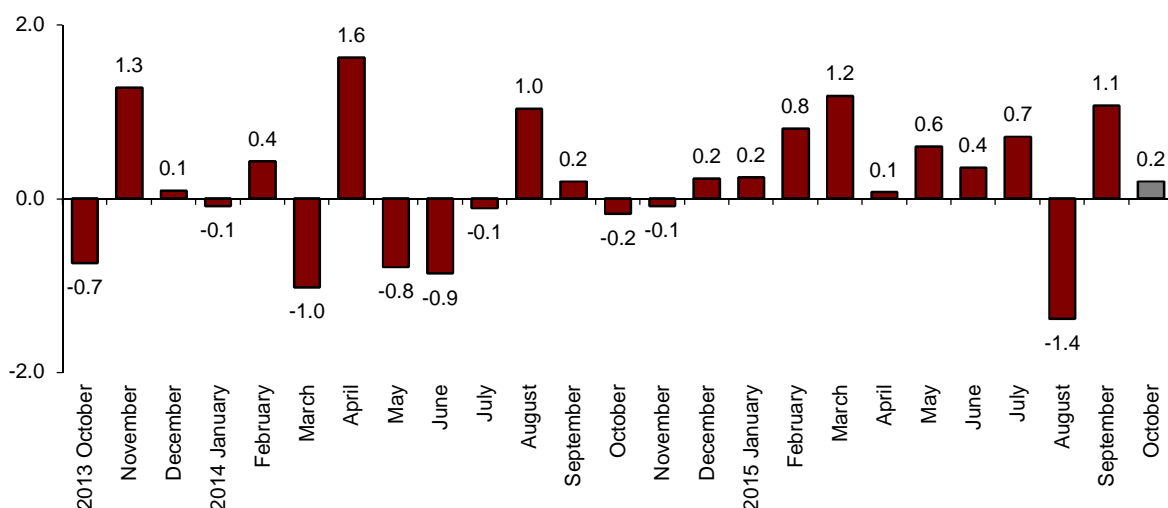
The monthly variation of the Industrial Production Index stands at 0.2%, after adjusting the seasonal and calendar effects

The annual rate of the Industrial Production Index stands at 4.0% in the series adjusted for the seasonal and calendar effects and at -0.3% in the original series

Monthly evolution of the Industrial Production

After adjusting the seasonal and calendar effects, the monthly variation of the Industrial Production Index (IPI) between October and September 2015 stood at 0.2%. This rate was 0.9 points lower than that registered in September.

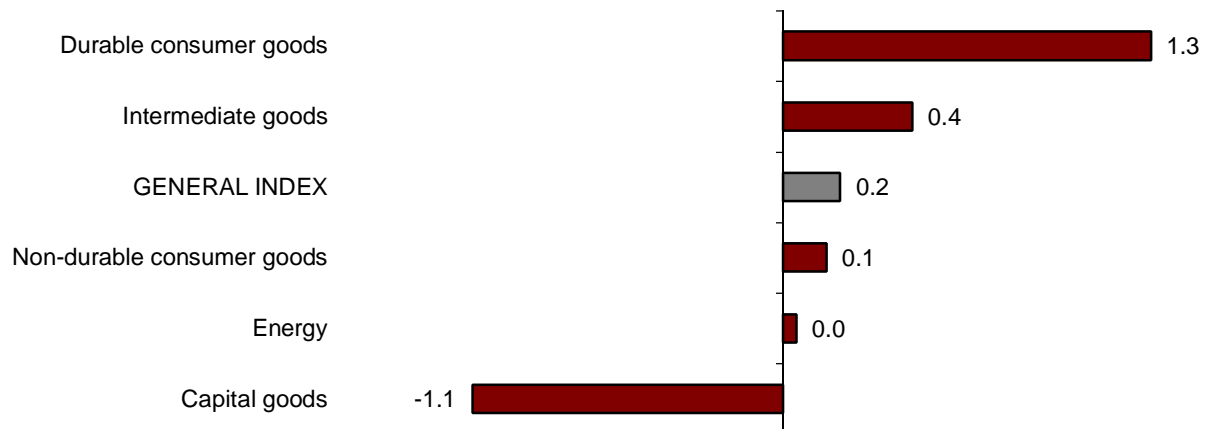
General Industrial Production Index
Adjusted for seasonal and calendar effects. Monthly rate



By industrial sectors, Durable consumer goods (1.3%) and Intermediate goods (0.4%) registered the greatest positive monthly variation rates.

In turn, Capital goods (−1.1%) was the only sector that registered a negative monthly rate.

Industrial Production Indices: General and by economic destination of the goods. Adjusted for seasonal and calendar effects. Monthly rate



A more detailed analysis showed the activities that registered the highest and lowest monthly rates in the month of October.

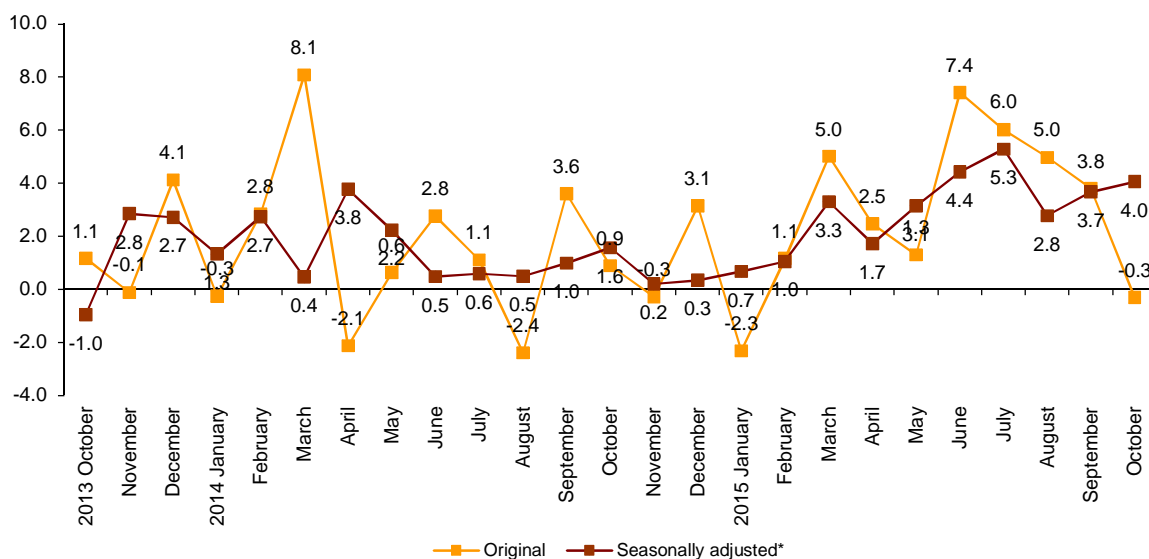
Activities with the highest annual rates of the Industrial Production Indices adjusted for seasonal and calendar effects	
Activity (Division from CNAE 2009)	Monthly rate (%)
Extraction of anthracite, coal and lignite	55.6
Graphic arts and reproduction of recorded media	10.0
Manufacture of coke and refined petroleum products	9.2
Activities with the lowest annual rates of the Industrial Production Indices adjusted for seasonal and calendar effects	
Activity (Division from CNAE 2009)	Monthly rate (%)
Manufacture of other transport equipment	-9.2
Manufacture of pharmaceutical products	-4.3
Manufacture of computers, electronic and optical products	-4.2

Annual evolution of the Industrial Production

After adjusting the seasonal and calendar effects, the Industrial Production Index registered a variation of 4.0% in October, as compared with the same month of the previous year. This rate was 0.3 points higher than that registered in September.

The original series of the IPI recorded an annual variation of -0.3%. This rate was 4.1 points lower than that of September.

**General Industrial Production Index
Annual rate**



After adjusting the seasonal and calendar effects, all sectors registered positive annual rates, except Energy (-2.3%).

Capital goods (10.4%), Intermediate goods (4.4%) and Durable consumer goods (4.1%) registered the greatest annual rates.

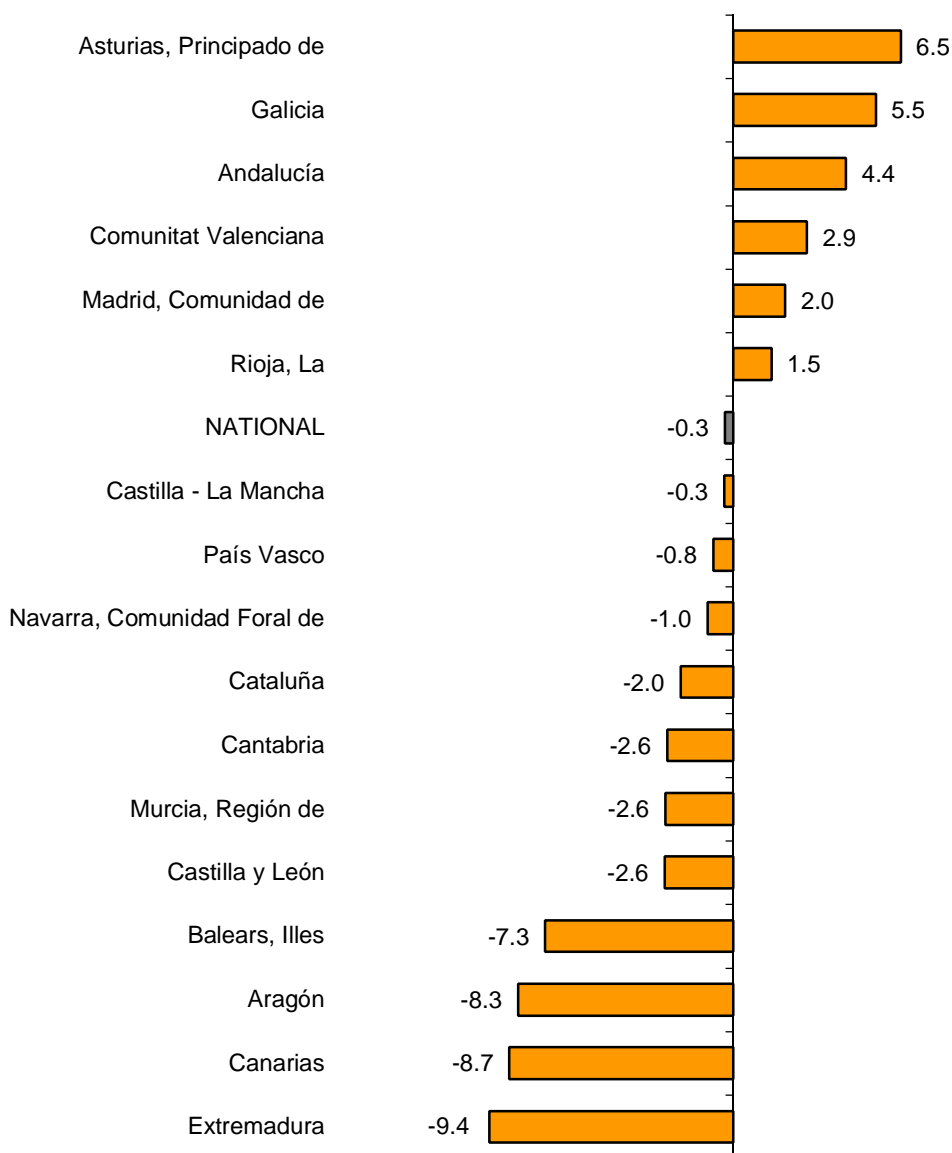
Annual rates of the Industrial Production Indices: General and by economic destination of the goods		
	Original index	Seasonally adjusted index
	Annual rate(%)	Annual rate (%)
GENERAL INDEX	-0.3	4.0
1. Consumer goods	-2.1	3.6
1.1. Durable consumer goods	-2.4	4.1
1.2. Non-durable consumer goods	-2.1	2.1
2. Capital goods	4.7	10.4
3. Intermediate goods	0.1	4.4
4. Energy	-4.4	-2.3

Results by Autonomous Community. Annual variation rates of the Industrial Production. Original series

The annual rate of the Industrial Production increased in six Autonomous Communities. The greatest increases were registered in Principado de Asturias (6.5%), Galicia (5.5%), and Andalucía (4.4%).

In turn, the greatest decreases were registered in Extremadura (-9.4%), Canarias (-8.7%), and Aragón (-8.3%).

**General indices: national and by Autonomous Community
Annual rate of the Industrial Production Index**



Industrial Production Indices. Base 2010 October 2015

Provisional data

1. General index by economic destination of the goods. Adjusted for seasonal and calendar effects

	Index	Rate (%)		
		Monthly	Annual	Year-to-date average
GENERAL INDEX	95.6	0.2	4.0	3.0
1. Consumer goods	96.0	0.7	3.6	0.9
1.1. Durable consumer goods	69.4	1.3	4.1	3.5
1.2. Non-durable consumer goods	98.4	0.1	2.1	0.9
2. Capital goods	100.6	-1.1	10.4	6.6
3. Intermediate goods	93.5	0.4	4.4	3.7
4. Energy	92.7	0.0	-2.3	1.5

2. General index by economic destination of the goods. Adjusted for calendar effects

	Index	Rate (%)	
		Annual	Year-to-date average
GENERAL INDEX	99.2	4.1	3.2
1. Consumer goods	100.9	3.8	0.9
1.1. Durable consumer goods	77.1	4.2	3.6
1.2. Non-durable consumer goods	103.5	3.1	0.6
2. Capital goods	108.3	10.6	6.8
3. Intermediate goods	99.1	4.4	3.8
4. Energy	86.8	-3.1	1.6

3. General index by economic destination of the goods. Original indices

	Index	Rate (%)		Repercussion
		Annual	Year-to-date average	Annual
GENERAL INDEX	98.1	-0.3	2.9	
1. Consumer goods	99.3	-2.1	0.6	-0.600
1.1. Durable consumer goods	75.8	-2.4	3.2	-0.054
1.2. Non-durable consumer goods	102.1	-2.1	0.4	-0.546
2. Capital goods	106.8	4.7	6.4	1.014
3. Intermediate goods	98.0	0.1	3.6	0.033
4. Energy	86.5	-4.4	1.5	-0.769

4. General index by branch of activity (CNAE 2009)

	Index	Rate (%)		Repercussion
		Annual	Year-to-date average	Annual
GENERAL INDEX	98.1	-0.3	2.9	
B. Mining and quarrying industries	51.6	-13.9	-6.8	-0.096
Extraction of anthracite, coal and lignite	29.7	-41.6	-37.4	-0.057
National crude petroleum and natural gas
Extraction of metallic ores
Other mining and quarrying	57.7	-5.4	1.1	-0.029
C. Manufacturing industry	101.6	0.9	3.4	0.783
Food Industry	105.4	-2.4	0.1	-0.317
Manufacture of beverages.	93.0	-11.0	-0.4	-0.411
Tobacco industry.	90.6	-10.3	-17.4	-0.032
Textile industry	108.0	0.8	4.5	0.010
Manufacture of garments	81.6	-4.7	-10.1	-0.054
Leather and footwear industry	90.0	2.0	0.4	0.013
Manufacture of wood and of products of wood and cork, except furniture; basketm	91.1	1.6	5.1	0.021
Manufacture of paper and paper-products	105.7	2.0	2.7	0.058
Graphic arts and reproduction of recorded media	93.1	13.2	2.2	0.251
Manufacture of coke and refined petroleum products	121.3	16.3	6.6	0.304
Chemical Industry	105.3	2.1	3.6	0.134
Manufacture of pharmaceutical products	111.4	-1.6	3.3	-0.060
Rubber and plastic material transformation industry	108.0	2.7	5.6	0.121
Manufacture of other non-metallic ore products	79.1	0.0	3.8	-0.002
Metallurgy; manufacture of iron, steel and ferro-alloy products	100.7	-2.8	0.0	-0.109
Manufacture of metal products, except machinery and equipment	93.5	6.1	5.4	0.476
Manufacture of computers, electronic and optical products	88.0	-0.1	11.0	-0.002
Manufacture of electrical material and equipment	94.6	-3.1	2.9	-0.099
Manufacture of machinery and equipment n.e.c.	113.4	3.7	1.8	0.173
Manufacture of motor vehicles, trailers and semi-trailers	133.8	8.2	11.3	0.669
Manufacture of other transport equipment	84.2	-15.1	-3.7	-0.419
Manufacture of furniture.	75.1	-2.2	5.7	-0.032
Other manufacturing industries	127.9	2.4	5.5	0.034
Repair and installation of machinery and equipment	88.5	2.7	9.0	0.055
D. Supply of electrical energy, gas, steam and air conditioning	85.7	-3.9	0.7	-0.513
E. Water supply, activities, waste management and decontamination*	72.9	-21.1	3.8	-0.496

* It only includes Water collection, treatment and supply

(..) Data not available due to statistical secrecy.

5. General Industrial Production Indices: national and by Autonomous Community

	Index	Rate (%)	
		Annual	Year-to-date average
NACIONAL	98.1	-0.3	2.9
Andalucía	89.7	4.4	3.1
Aragón	99.6	-8.3	0.8
Asturias, Principado de	103.0	6.5	8.1
Balears, Illes	87.5	-7.3	2.9
Canarias	95.1	-8.7	0.0
Cantabria	96.2	-2.6	-0.8
Castilla y León	97.8	-2.6	0.7
Castilla-La Mancha	94.4	-0.3	4.7
Cataluña	104.8	-2.0	2.2
Comunitat Valenciana	103.4	2.9	5.7
Extremadura	77.2	-9.4	2.0
Galicia	92.2	5.5	3.9
Madrid, Comunidad de	89.7	2.0	2.7
Murcia, Región de	90.3	-2.6	3.2
Navarra, Comunidad Foral de	103.4	-1.0	2.0
País Vasco	100.6	-0.8	3.4
Rioja, La	104.2	1.5	3.1

More detailed information by Autonomous Community may be obtained at:

Andalucía	www.juntadeandalucia.es/institutodeestadisticaycartografia
Aragón	www.aragon.es/iaest/ipi
Principado de Asturias	www.sadei.es
Illes Balears	www.ibestat.caib.es
Canarias	www.gobiernodecanarias.org/istac
Cantabria	www.icane.es
Castilla y León	www.jcyl.es/estadistica
Castilla - La Mancha	www.jccm.es/estadistica
Cataluña	www.idescat.cat
Comunitat Valenciana	www.ive.es
Extremadura	http://estadistica.gobex.es
Galicia	www.ige.xunta.es
Comunidad de Madrid	www.madrid.org/iestadis
Región de Murcia	www.carm.es/econet
La Rioja	www.larioja.org

For further information see INEbase - www.ine.es/en/

All press releases at: www.ine.es/en/prensa/prensa_en.htm

Press Office: Telephone numbers: 91 583 93 63 / 94 08 – Fax: 91 583 90 87 - gprensa@ine.es

Information Area: Telephone number: 91 583 91 00 – Fax: 91 583 91 58 – www.ine.es/infoine/?L=1