

Industrial Price Index (IPRI). Base 2010
September 2014. *Provisional data*

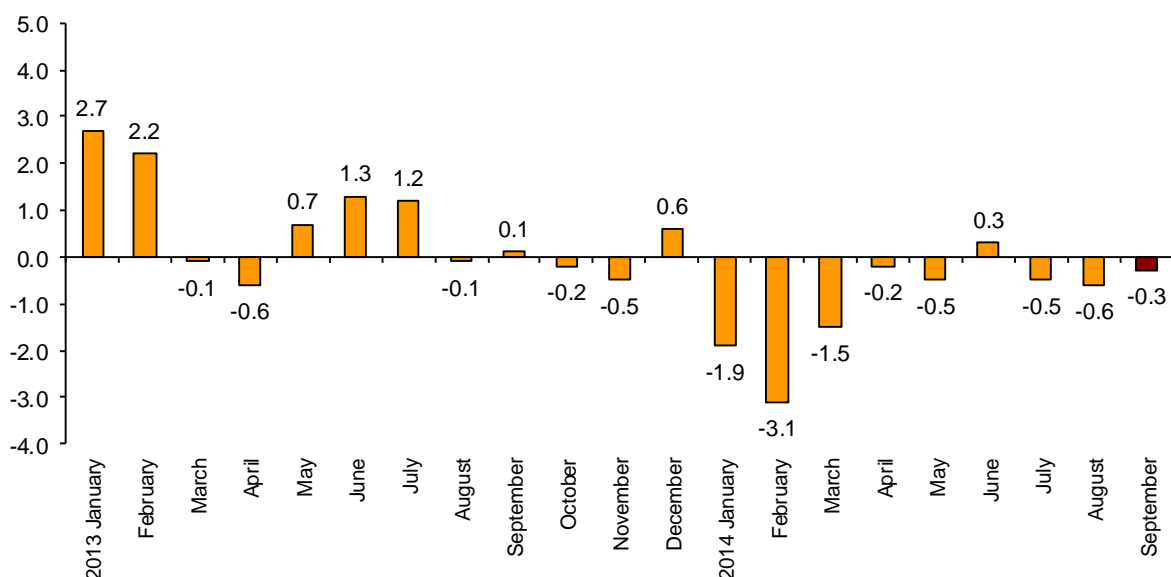
The annual variation rate of the Industrial Price Index stands at -0.3% , three tenths higher than that registered in August

The monthly variation rate of industrial prices is 0.5%

Annual evolution of industrial prices

The annual rate of the General Industrial Price Index (IPRI) stood at -0.3% in September, three tenths higher than that registered in August.

**Annual evolution of the IPRI
General index**



By economic destination of the goods, the industrial sectors that influenced the most the increase in the annual variation of the general IPRI were:

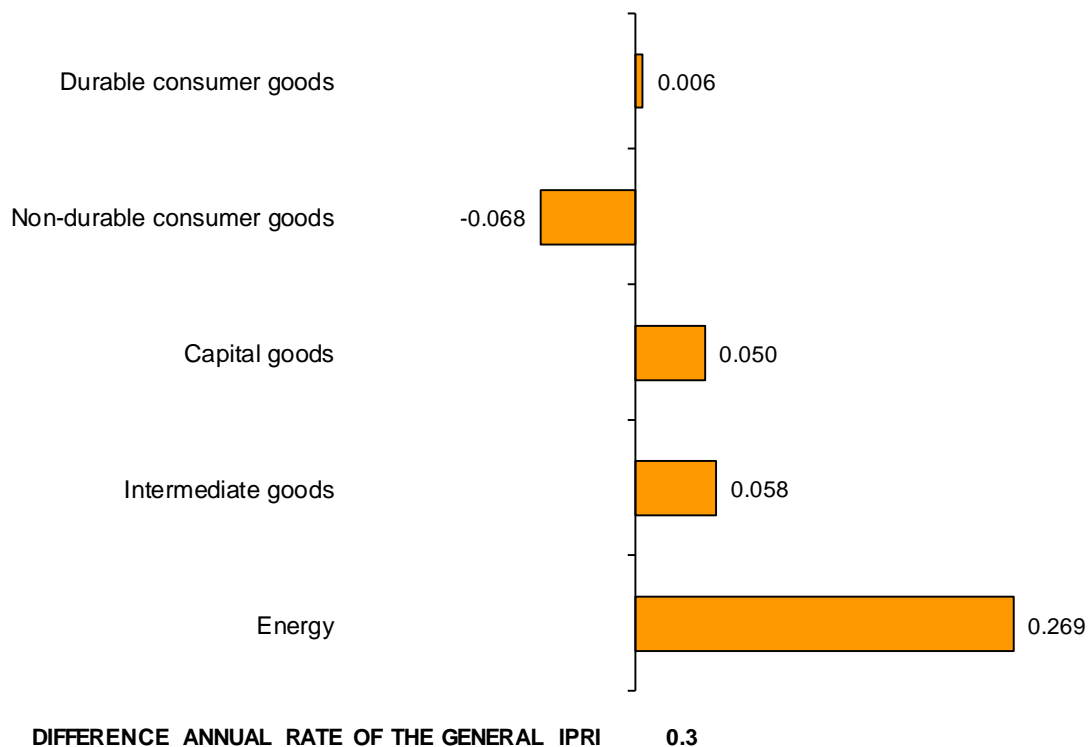
- **Energy**, whose annual rate reached **0.0%**, due to the increase in the prices of *Electric power generation, transmission and distribution* this month, that was greater than that registered in September 2013.
- **Intermediate goods**, with a variation of -0.7% , two tenths above that registered in the previous month. Worth noting in this behaviour was the increase in the prices of *Manufacture of basic precious and other non-ferrous metals*, that registered its greatest increase since

September 2011, as well as the decrease in the prices of *Manufacture of prepared animal feeds*, which was lower than that registered in September 2013.

In turn, the only industrial sector that registered a decrease in the annual rate was:

- **Non-durable consumer goods**, whose variation decreased two tenths, standing at **-0.6%**. This was due to the decrease in the prices of *Processing and preserving of meat and production of meat products* and of *Manufacture of dairy products*, that registered an increase in the same month of 2013.

Contribution of the industrial sectors in the annual rate of the IPRI



Monthly evolution of industrial prices

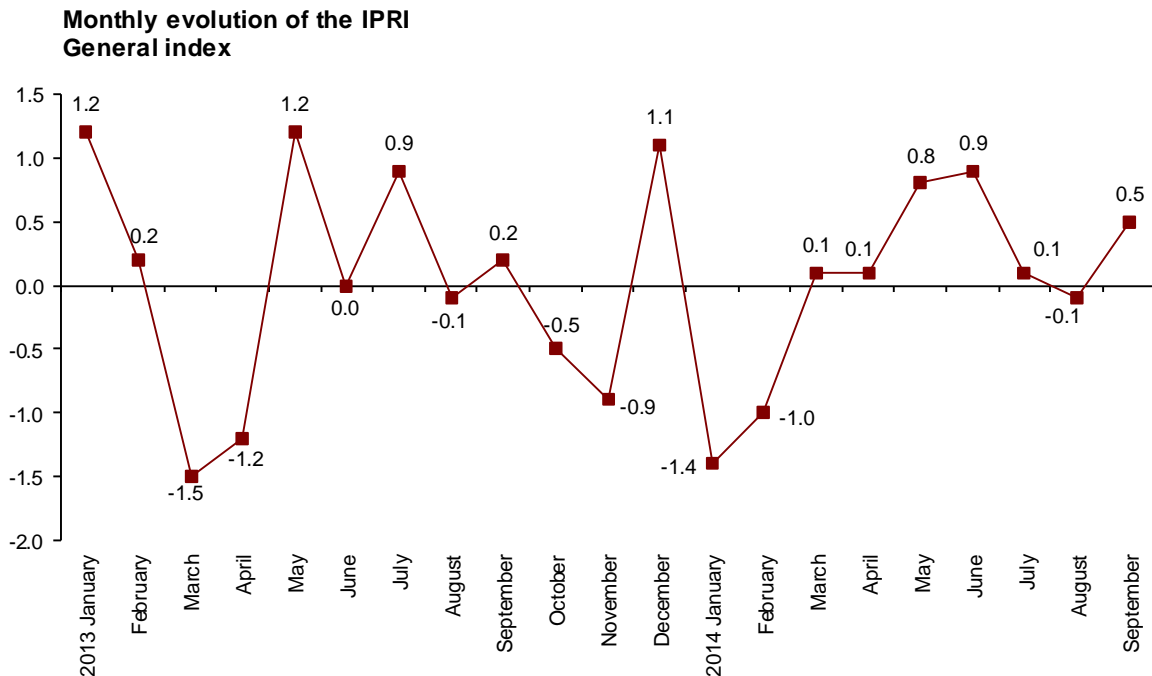
In September, the monthly variation of the general IPRI was **0.5%**.

By economic destination of the goods, among the industrial sectors with a monthly positive effect on the general index, worth noting:

- **Energy**, whose monthly variation of **1.8%** was due to the increase in the prices of *Electric power generation, transmission and distribution*. Its effect to the general index was **0.475**.
- **Capital goods**, whose rate of **0.2%** and effect of **0.029** was due to the increase in the prices of *Manufacture of railway locomotives and rolling stock*.
- **Intermediate goods**, whose rate of **0.1%** had a contribution of **0.019**, due to the increase in the prices of *Manufacture of basic precious and other non-ferrous metals*.

In turn, the only industrial sector with a negative contribution to IPRI was:

• **Non-durable consumer goods**, with a monthly variation of **-0.2%** and an effect of **-0.046**. Worth noting was the decrease in the prices of *Processing and preserving of meat and production of meat products*.



A more detailed analysis showed the activities that most affected the monthly rate of the IPRI in the month of September.

Activities with the greatest positive contribution to the IPRI monthly rate

	Monthly rate (%)	Contribution
CNAE-09 Group		
Electric power generation, transmission and distribution	4.2	0.526
Manufacture of basic precious and other non-ferrous metals	2.6	0.035
Manufacture of basic iron and steel and of ferro-alloys	1.0	0.017
Manufacture of railway locomotives and rolling stock	2.9	0.017

Activities with the greatest negative contribution to the IPRI monthly rate

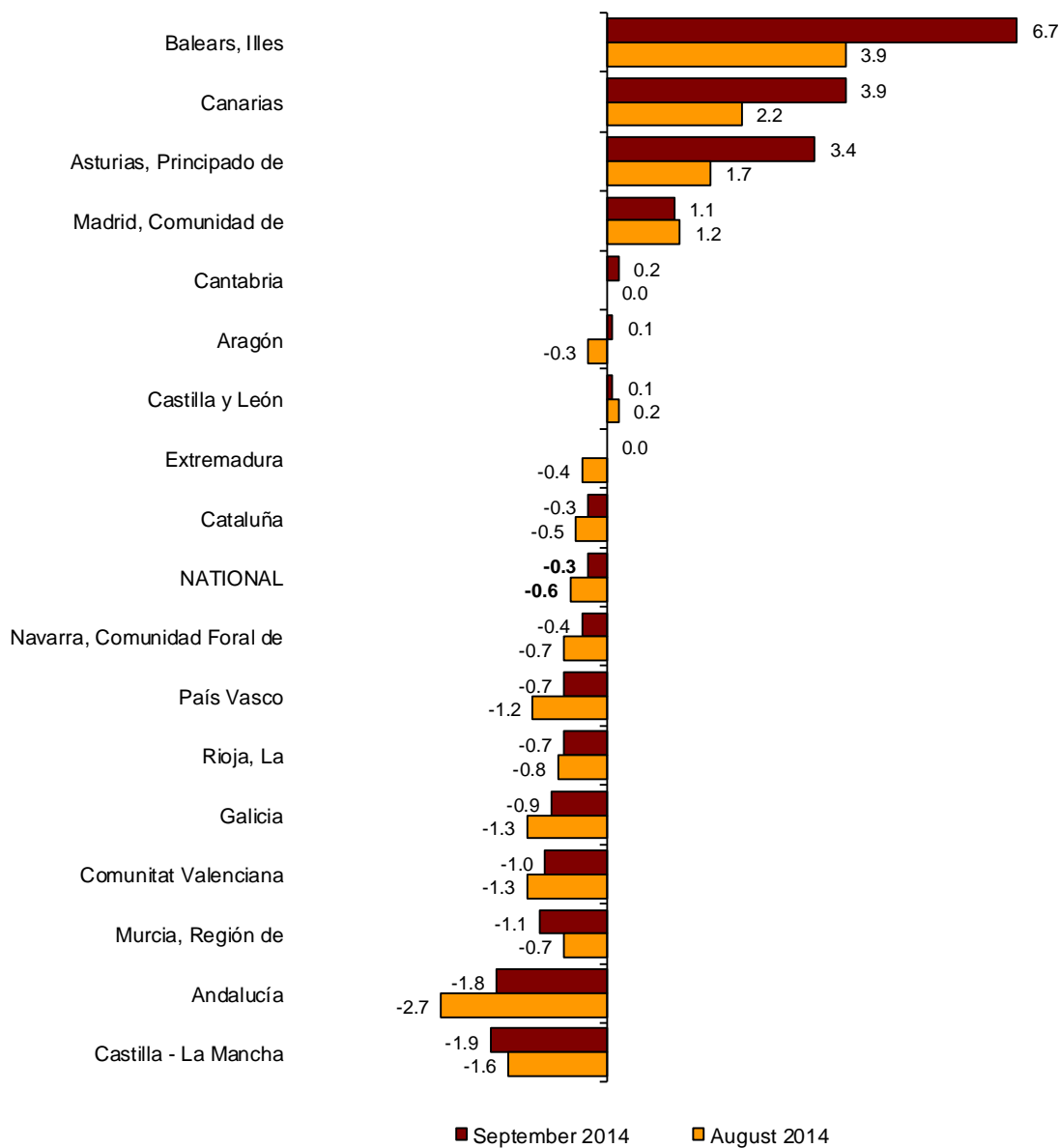
	Monthly rate (%)	Contribution
CNAE-09 Group		
Processing and preserving of meat and production of meat products	-0.8	-0.037
Manufacture of gas; distribution of gaseous fuels through mains	-0.8	-0.032
Manufacture of basic chemicals, fertilisers and nitrogen compounds, plastic and synthetic rubber in primary forms	-0.7	-0.022
Manufacture of prepared animal feeds	-0.8	-0.018
Manufacture of refined petroleum products	-0.2	-0.017

Results by Autonomous Community. Annual variation rates

In September, the annual rate of the IPRI increased in 13 Autonomous Communities. Among them, worth noting were Illes Balears (6.7%), Principado de Asturias (3.4%) and Canarias (3.9%), which registered increases of 2.8, 1.7 and 1.7 points, respectively.

In turn, among the Autonomous Communities that registered a decrease, worth noting were Región de Murcia (-1.1%) and Castilla-La Mancha (-1.9%), whose decreases were of four and three tenths, respectively.

Annual variation rates. IPRI
Index by Autonomous Community



Industrial Prices Index. Base 2010 September 2014

Provisional data

1. National indices: general and by economic destination of the goods

	Index	% variation			Effect	
		Over previous month	Over last December	Over one year	Over previous month	Over last December
General index	112.0	0.5	0.0	-0.3		
Consumer goods	107.3	-0.1	0.4	-0.5	-0.043	0.112
- Durable consumer goods	102.7	0.1	0.8	0.8	0.003	0.017
- Non-durable consumer goods	108.0	-0.2	0.4	-0.6	-0.046	0.095
Capital goods	102.0	0.2	0.8	0.6	0.029	0.114
Intermediate goods	106.6	0.1	-0.1	-0.7	0.019	-0.036
Energy	130.2	1.8	-0.8	0.0	0.475	-0.209

2. Variation rates in the last 12 months. General Index

Period	Index	% variation		
		Over previous month	Over last December	Over one year
2013 September	112.3	0.2	0.9	0.1
October	111.7	-0.5	0.3	-0.2
November	110.7	-0.9	-0.5	-0.5
December	112.0	1.1	0.6	0.6
2014 January	110.5	-1.4	-1.4	-1.9
February	109.4	-1.0	-2.3	-3.1
March	109.5	0.1	-2.2	-1.5
April	109.7	0.1	-2.1	-0.2
May	110.6	0.8	-1.2	-0.5
June *	111.5	0.9	-0.4	0.3
July	111.6	0.1	-0.4	-0.5
August	111.4	-0.1	-0.5	-0.6
September	112.0	0.5	0.0	-0.3

* Revised data

3. Total industry and classification by activity (CNAE 2009)

	Index	Over previous month		Over last December		Over one year
		% Variation	Effect	% Variation	Effect	% Variation
TOTAL INDUSTRY	112.0	0.5		0.0		-0.3
B. Mining and quarrying	102.8	-0.4	-0.004	-0.1	-0.001	0.7
Mining of coal and lignite	110.7	-2.2	-0.003	1.3	0.002	5.5
Mining of metal ores	90.2	-1.1	-0.001	-2.5	-0.001	-2.7
Other mining and quarrying	102.2	0.0	0.000	-0.3	-0.002	0.0
C. Manufacturing	108.3	0.0	-0.012	0.1	0.058	-0.9
Manufacture of food products	111.8	-0.4	-0.065	-0.2	-0.030	-2.0
Manufacture of beverages	108.2	0.0	0.000	0.0	0.000	0.0
Manufacture of tobacco products	118.3	0.0	0.000	2.6	0.006	2.0
Manufacture of textiles	105.9	0.0	0.000	0.3	0.003	0.4
Manufacture of wearing apparel	98.9	0.2	0.003	0.8	0.010	-0.1
Manufacture of leather and related products	106.4	0.2	0.001	0.5	0.003	0.9
Manufacture of wood and of products of wood and cork, except furniture; manufacture of articles of straw and plaiting materials	104.6	0.1	0.001	0.9	0.013	1.0
Manufacture of paper and paper products	104.1	0.1	0.002	-0.8	-0.018	-0.4
Printing and reproduction of recorded media	105.4	-0.2	-0.004	-0.5	-0.009	0.6
Manufacture of coke and refined petroleum products	127.8	-0.2	-0.017	-1.6	-0.135	-5.5
Manufacture of chemicals and chemical products	112.8	-0.4	-0.023	0.7	0.038	-0.7
Manufacture of basic pharmaceutical products	100.0	0.0	-0.001	1.6	0.037	1.3
Manufacture of rubber and plastic products	108.3	0.0	-0.001	-0.6	-0.019	-0.2
Manufacture of other non-metallic mineral products	102.2	0.3	0.013	0.0	0.001	-0.2
Manufacture of basic metals	102.6	1.2	0.045	1.8	0.070	1.3
Manufacture of fabricated metal products, except machinery and equipment	101.5	0.1	0.007	0.2	0.015	-0.4
Manufacture of computer, electronic and optical products	87.0	-0.1	-0.001	-3.1	-0.025	-4.2
Manufacture of electrical equipment	105.7	0.0	-0.001	0.3	0.009	0.1
Manufacture of machinery and equipment n.e.c.	103.4	0.0	-0.001	1.1	0.028	1.1
Manufacture of motor vehicles, trailers and semi-trailers	101.2	0.1	0.006	0.0	0.001	0.1
Manufacture of other transport equipment	102.4	1.0	0.017	3.1	0.050	1.7
Manufacture of furniture	103.6	0.1	0.002	0.7	0.011	0.8
Other manufacturing	104.9	0.5	0.004	0.4	0.003	0.6
Repair and installation of machinery and equipment	100.1	0.1	0.001	-0.3	-0.004	0.0
D. Electricity and gas	132.0	3.0	0.494	-0.6	-0.098	2.4
E. Water supply	115.3	0.1	0.001	1.6	0.022	1.9

(Continues)

4. Indices of Autonomous Communities: general and by economic destination

	Index	% variation			Index	% variation		
		Over previous month	Over last December	Over one year		Over previous month	Over last December	Over one year
Andalucía				Aragón				
General index	117.4	0.8	0.3	-1.8	109.3	0.6	-0.2	0.1
Consumer goods	112.0	0.7	3.5	-1.3	104.1	-0.1	0.8	0.7
- Durable consumer goods	104.3	0.0	-0.3	-1.8	101.6	0.0	1.7	2.5
- Non-durable consumer goods	112.5	0.7	3.8	-1.2	105.3	-0.1	0.3	-0.2
Capital goods	102.1	0.0	0.0	-1.0	104.2	-0.1	0.5	0.4
Intermediate goods	110.5	0.0	-0.9	-1.7	109.5	0.4	-1.0	-1.6
Energy	132.3	1.6	-1.6	-2.6	132.1	3.5	-1.1	2.6
Asturias, Principado de				Balears, Illes				
General index	108.2	2.0	-1.6	3.4	118.3	5.1	-4.9	6.7
Consumer goods	103.9	-0.2	-1.3	-1.5	106.4	-0.1	-0.7	0.1
- Durable consumer goods	104.2	0.2	0.6	0.6	110.2	0.0	1.4	1.4
- Non-durable consumer goods	104.2	-0.2	-1.4	-1.7	105.6	-0.1	-1.0	-0.1
Capital goods	95.8	0.1	0.7	0.5	100.4	0.0	0.4	0.4
Intermediate goods	99.5	0.5	1.7	1.6	110.0	-0.2	0.0	0.6
Energy	126.9	5.8	-5.9	7.8	130.2	9.8	-8.4	10.4
Canarias				Cantabria				
General index	126.6	3.4	-3.0	3.9	107.9	0.6	-0.7	0.2
Consumer goods	107.0	0.8	1.2	1.7	105.2	0.0	0.6	1.8
- Durable consumer goods	99.9	0.2	0.7	0.7	101.9	0.0	3.1	3.3
- Non-durable consumer goods	107.1	0.8	1.2	1.7	106.0	-0.1	-0.1	1.4
Capital goods	97.9	1.0	-0.8	-1.0	99.3	0.2	-0.1	-1.0
Intermediate goods	113.7	0.5	1.4	2.7	108.6	0.5	-0.7	-1.1
Energy	140.8	4.6	-4.6	4.6	122.6	3.2	-4.7	-0.2
Castilla y León				Castilla-La Mancha				
General index	106.9	-0.1	-0.2	0.1	113.8	0.0	-0.1	-1.9
Consumer goods	108.2	-0.7	-0.6	-0.2	111.4	-0.4	-0.1	-2.2
- Durable consumer goods	105.1	0.0	2.1	2.1	103.6	0.1	0.1	1.0
- Non-durable consumer goods	108.2	-0.7	-0.7	-0.2	111.9	-0.4	-0.1	-2.4
Capital goods	101.6	0.0	0.2	0.3	104.4	-0.1	2.1	1.7
Intermediate goods	105.0	0.0	0.1	-0.4	106.8	-0.1	0.0	-1.5
Energy	126.5	2.4	0.1	2.8	128.6	0.5	-0.5	-2.5
Cataluña				Comunitat Valenciana				
General index	111.2	0.4	0.2	-0.3	105.4	0.2	-0.2	-1.0
Consumer goods	107.2	0.0	0.5	0.0	104.8	-0.2	0.0	-0.4
- Durable consumer goods	102.6	0.2	1.6	1.7	105.2	0.0	0.4	0.4
- Non-durable consumer goods	108.3	0.0	0.4	-0.1	104.7	-0.2	-0.1	-0.5
Capital goods	101.3	0.4	1.0	1.3	100.6	0.0	-0.1	-0.1
Intermediate goods	109.5	-0.1	-0.4	-0.9	101.2	0.2	-0.5	-1.2
Energy	131.0	1.4	0.1	-1.0	128.3	1.2	0.4	-2.3

(Conclusion)

4. Indices of Autonomous Communities: general and by economic destination

	Index			% variation			Index	% variation		
	Over previous month	Over last December	Over one year	Over previous month	Over last December	Over one year				
Extremadura										
General index	108.1	0.4	-0.1	0.0	107.8	-0.1	0.0	-0.9		
Consumer goods	103.9	0.0	-0.6	-1.4	103.4	-0.3	0.0	-0.5		
- Durable consumer goods	101.8	1.2	0.0	0.0	99.3	0.0	0.5	0.4		
- Non-durable consumer goods	103.9	-0.1	-0.6	-1.5	103.6	-0.3	0.0	-0.5		
Capital goods	98.5	0.1	0.9	0.0	102.6	0.0	-0.2	0.0		
Intermediate goods	111.9	-0.1	1.1	0.3	104.6	-0.2	0.6	-0.7		
Energy	125.6	3.6	-2.6	4.3	127.9	0.4	-0.6	-2.8		
Galicia										
General index	116.6	0.7	1.0	1.1	114.1	0.1	-0.9	-1.1		
Consumer goods	103.4	-0.2	0.7	1.3	109.9	-1.7	-2.9	-4.1		
- Durable consumer goods	105.5	0.0	0.8	1.2	105.7	0.1	0.4	0.4		
- Non-durable consumer goods	103.2	-0.2	0.6	1.4	110.4	-1.9	-3.3	-4.7		
Capital goods	101.8	0.0	0.6	0.4	107.2	0.1	0.9	0.9		
Intermediate goods	107.1	0.2	1.0	1.3	106.3	0.0	1.7	0.1		
Energy	127.9	1.6	1.3	1.2	133.1	2.4	-1.0	0.8		
Madrid, Comunidad de										
General index	106.7	0.4	0.2	-0.4	113.7	0.3	-0.4	-0.7		
Consumer goods	108.8	0.0	0.5	-0.7	106.4	-1.0	-2.1	-2.4		
- Durable consumer goods	100.8	0.0	4.1	3.8	99.9	0.1	-0.7	-0.7		
- Non-durable consumer goods	109.5	0.0	0.2	-1.0	110.0	-1.3	-2.5	-2.9		
Capital goods	101.1	0.1	-0.7	-0.8	105.2	0.8	3.9	2.2		
Intermediate goods	104.6	0.3	0.5	-0.9	107.0	0.2	-0.4	-0.7		
Energy	139.3	4.4	1.3	4.2	126.2	0.6	-2.0	-1.7		
Murcia, Región de										
General index	111.4	0.1	2.9	-0.7	109.1	0.1	1.0	0.7		
Consumer goods	109.1	0.1	1.0	0.7	100.3	1.8	-1.1	-1.1		
- Durable consumer goods	100.3	1.8	-1.1	-1.1	109.8	-0.1	1.2	0.8		
- Non-durable consumer goods	109.8	-0.1	1.2	0.8	100.4	0.0	0.3	0.0		
Capital goods	100.4	0.0	0.3	0.0	110.1	0.6	0.4	0.5		
Intermediate goods	110.1	0.6	0.4	0.5	133.4	-0.3	13.9	-6.6		
Energy	133.4	-0.3	13.9	-6.6						
Navarra, C. Foral de										
General index	111.4	0.1	2.9	-0.7	109.1	0.1	1.0	0.7		
Consumer goods	109.1	0.1	1.0	0.7	100.3	1.8	-1.1	-1.1		
- Durable consumer goods	100.3	1.8	-1.1	-1.1	109.8	-0.1	1.2	0.8		
- Non-durable consumer goods	109.8	-0.1	1.2	0.8	100.4	0.0	0.3	0.0		
Capital goods	100.4	0.0	0.3	0.0	110.1	0.6	0.4	0.5		
Intermediate goods	110.1	0.6	0.4	0.5	133.4	-0.3	13.9	-6.6		
Energy	133.4	-0.3	13.9	-6.6						
Páis Vasco										
General index	111.4	0.1	2.9	-0.7	109.1	0.1	1.0	0.7		
Consumer goods	109.1	0.1	1.0	0.7	100.3	1.8	-1.1	-1.1		
- Durable consumer goods	100.3	1.8	-1.1	-1.1	109.8	-0.1	1.2	0.8		
- Non-durable consumer goods	109.8	-0.1	1.2	0.8	100.4	0.0	0.3	0.0		
Capital goods	100.4	0.0	0.3	0.0	110.1	0.6	0.4	0.5		
Intermediate goods	110.1	0.6	0.4	0.5	133.4	-0.3	13.9	-6.6		
Energy	133.4	-0.3	13.9	-6.6						
Rioja, La										

For further information see **INEbase** - www.ine.es/en/ All press releases at: www.ine.es/en/prensa/prensa_en.htm

Press Office: Telephone numbers: 91 583 93 63 / 94 08 – Fax: 91 583 90 87 - gprensa@ine.es

Information Area: Telephone number: 91 583 91 00 – Fax: 91 583 91 58 – www.ine.es/infoine