

20 March 2013

Bankruptcy Proceedings Statistics (BPS)
Year 2012. *Provisional data*

The number of debtors processed increases 27.1% in 2012

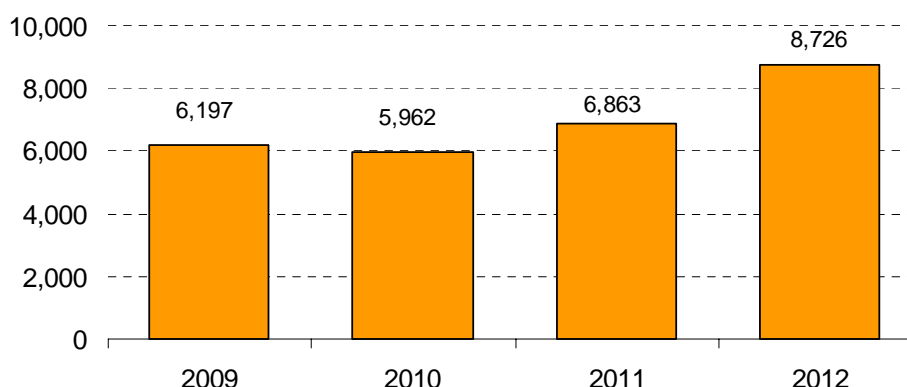
23.8% of companies declared bankrupt is 20 or over years old

The INE publishes for the first time, independently, an annual summary of the performance of the bankruptcy proceedings and its characteristics. The information used to this end is based in the annual data of 2012, as well as the performance of the last five years.

In 2012, the number of debtors processed reached 8,726, representing a 27.1% increase, as compared with the previous year.

By type of proceeding, 8,222 were voluntary (27.0% more than in 2011) and 504 were necessary (30.2% more). Considering the type of proceedings, ordinary proceedings increased 237.1%, and abbreviated proceedings increased 9.0%.

Evolution of the debtors processed



Number of debtors processed by legal nature and type of bankruptcy

	% Variación anual			Total 2012
	2010	2011	2012	
Debtors processed	-3.8	15.1	27.1	8,726
Individuals without business activity	-4.89	-1.95	-2.73	927
Companies declared bankrupt	-3.6	18.4	32.0	7,799
Individuals with business activity	-8.1	-6.9	8.6	265
Public Limited Company (P.L.C.)	-11.1	12.1	39.8	1,387
Private Limited Company (L.T.D.)	-1.8	20.9	31.9	5,990
Other	27.9	51.7	18.9	157
Type of bankruptcy				
Voluntary	-3.9	14.6	27.0	8,222
Necessary	-1.6	24.0	30.2	504
Type of procedure				
Ordinary	-58.9	-7.0	237.1	1,844
Abbreviated	12.8	17.5	9.0	6,882

Companies declared bankrupt by main economic activity

The number of companies declared bankrupt increased 32.0% in 2012 reaching 7,799.

The activities *Construction*, *Trade* and *Industry and energy* registered 30.1%, 18.6% and 18.5% respectively of the companies declared bankrupt in 2012.

By main economic activity, *Trade* registered the highest increase within the companies declared bankrupt.

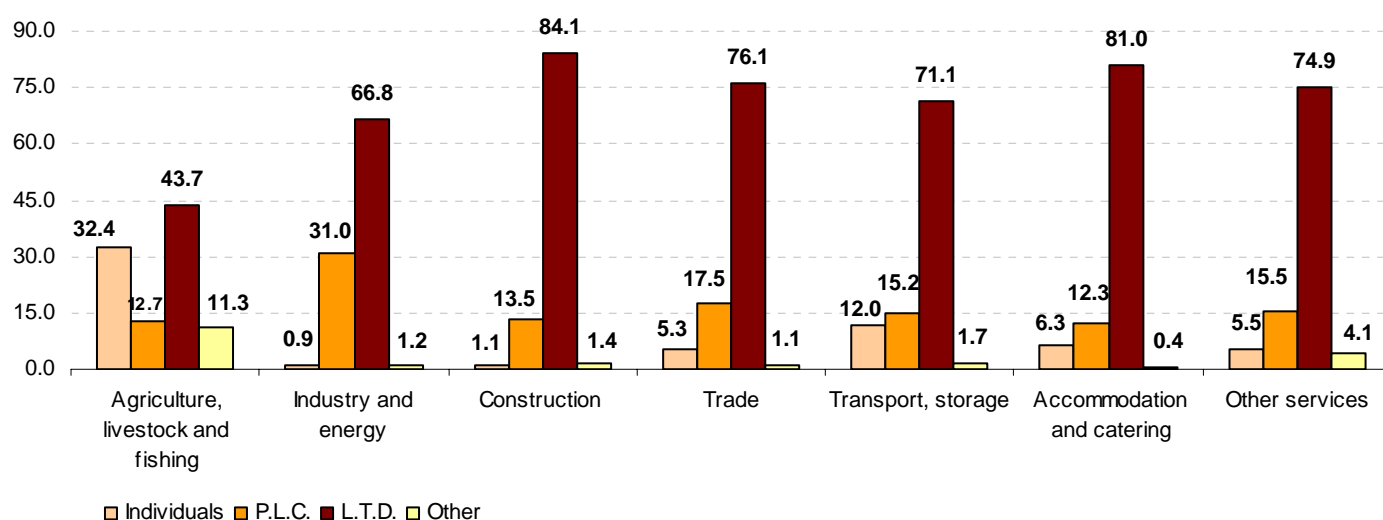
Companies declared bankrupt by main economic activity

	%Variación anual			
	2010	2011	2012	Total 2012
Companies declared bankrupt	-3.6	18.4	32.0	7,799
Agriculture, livestock and fishing	12.8	20.8	10.9	71
Industry and energy	-18.6	11.1	28.4	1,444
Construction	-7.7	19.7	22.8	2,350
Trade	-8.4	28.6	37.9	1,447
Transport, storage	24.6	9.1	29.4	343
Accommodation and catering	58.7	13.9	34.0	252
Other services	19.7	14.5	35.7	1,266
Without classification	2.5	30.1	68.3	626

Considering the legal nature, *Industry and energy* registered the highest percentage of Public Limited Companies declared bankrupt (31.0%), while *Agriculture and fishing* registered the highest percentage of individuals processed by economic activity (32.14%).

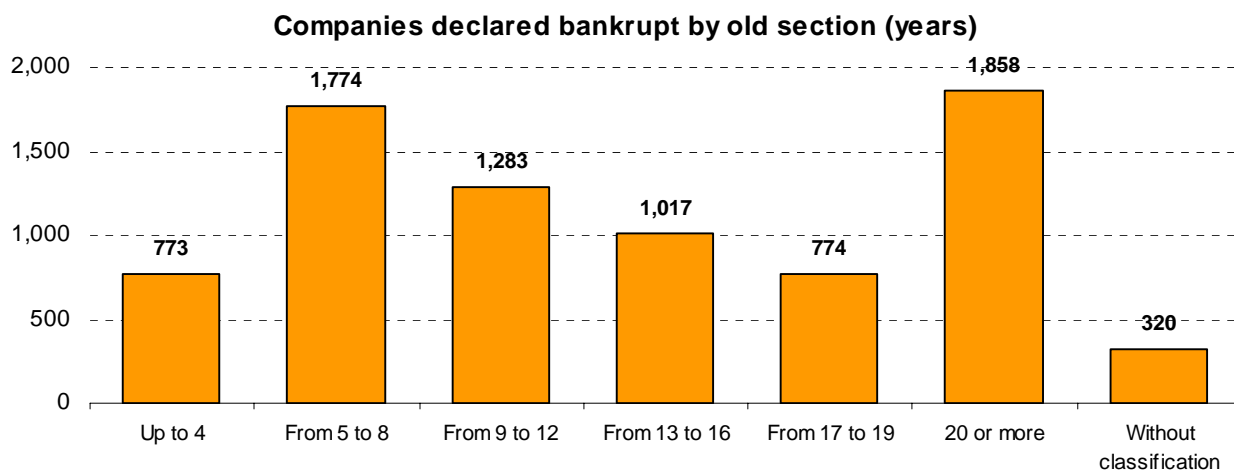
In turn, *Construction* and *Accommodation and catering* registered the highest percentages of bankruptcy of Private Limited Companies (with 84.1% and 81.0%, respectively).

Percentage of companies declared bankrupt by legal nature within each economic activity



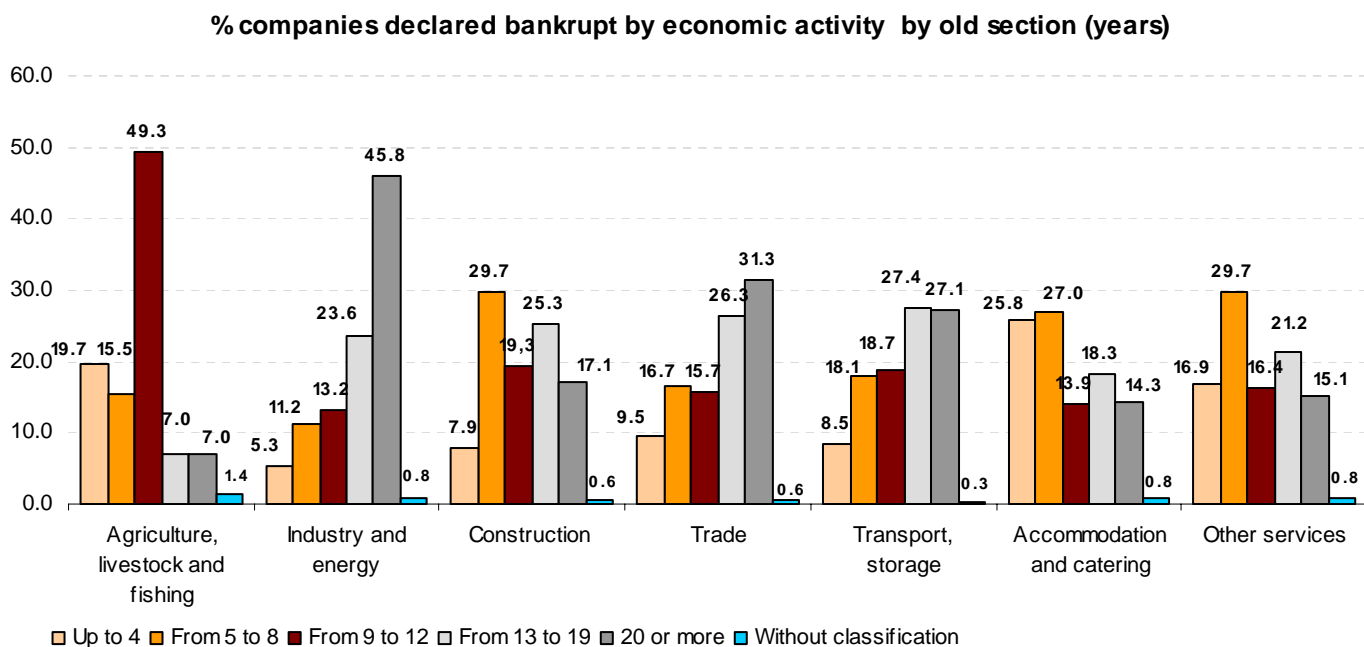
Companies processed, by old section¹

23.8% of the companies declared bankrupt in 2012 were 20 or over years old. In turn, 9.9% were 4 or less years old.



The economic activity with the highest percentage of companies declared bankrupt that were 20 years or old or older was *Industry and energy* (45.8%).

In turn, *Accommodation and catering* registered the highest percentage of companies declared bankrupt that were 4 or less years old (25.8%).

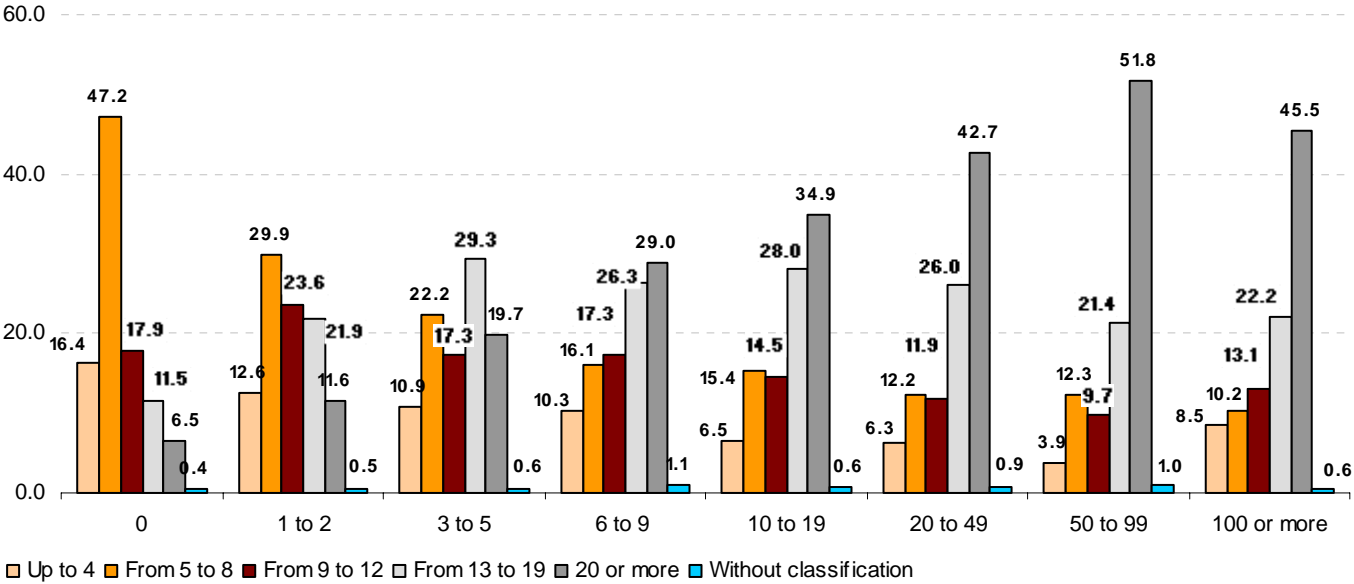


¹ In order to determine the old section of a company data from the Central Business Register has been taken into account

Considering the number of employees, 63.6% of the total number of companies declared bankrupt were 9 or less years old.

Within the companies with 50 to 99 employees and over 100 employees, 51.8% and 45.5%, respectively were registered by those that were 20 years old or older.

% companies declared bankrupt by segment employees by old section (years)

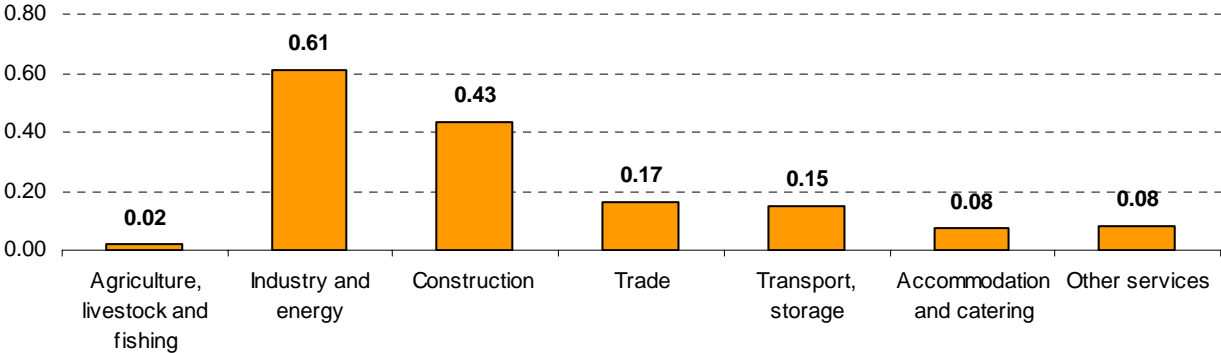


Companies declared bankrupt compared to the total existing companies

Taking as reference the total of existing companies in each economic activity, it is worth noting that 0.61% of the companies with *Industry and energy* as their main activity began a bankruptcy proceeding in 2012. In turn, only 0.02% of companies with *Agriculture and fishing* as their main activity were affected by a bankruptcy proceeding.

The following chart show the percentage of companies declared bankrupt by economic activity with regards to the total number of companies in 2012.

% Companies declared bankrupt by economic activity / Total companies Dirce by economic activity



Geographical distribution of debtors processed

The Autonomous Communities of Cataluña, Comunitat Valenciana and Comunidad de Madrid accounted for 49.4% of the total debtors processed during 2012.

Principado de Asturias registered the highest increase of the number of debtors processed (128.4%). In turn, Illes Balears was the only Autonomous Community where the number of debtors processed decreased (-8.8%).

Taking as a reference the total number of companies in each Autonomous Community, 0.29% of companies located in País Vasco and Comunitat Valenciana initiated a bankruptcy proceeding in 2012. On the opposite side was Extremadura which registered a bankruptcy proceeding of 0.09% of the total of companies established in the mentioned Autonomous Community. The national average stood at 0.19%.

Total debtors,% annual change and insolvent companies of total companies dirce by communities and autonomous cities

Year 2012	Number of debtors processed	% annual variation	% companies declared bankrupt / Companies dirce
Total	8,726	27.1	0.19
Andalucía	921	16.3	0.13
Aragón	297	33.8	0.22
Asturias, Principado de	185	128.4	0.18
Balears, Illes	280	-8.8	0.23
Canarias	247	28.0	0.12
Cantabria	97	64.4	0.18
Castilla y León	358	33.6	0.14
Castilla-La Mancha	342	21.3	0.16
Cataluña	1,879	26.3	0.23
Comunitat Valenciana	1,355	34.4	0.29
Extremadura	97	16.9	0.09
Galicia	539	19.2	0.17
Madrid, Comunidad de	1,077	27.5	0.16
Murcia, Región de	281	12.4	0.21
Navarra, Comunidad Foral de	127	47.7	0.22
País Vasco	568	41.6	0.29
Rioja, La	71	69.0	0.23
Ceuta	1	0.0	0.02
Melilla	4	33.3	0.02

Provincial information

The provincial results that were previously offered in this Press release may henceforth be viewed at the following address of the INE website:

http://www.ine.es/en/daco/daco42/epc/epcpro0012_en.pdf

Year 2012. Provisional data

TP1. Bankrupt debtors by type of bankruptcy proceeding, type of procedure, existence of anticipated proposals of agreement and proposed content

	Total	Proceeding type		Procedure type		Existence of anticipated proposal		Proposed content			
		Voluntary	Necessary	Ordinary	Abbreviated	No	Yes	Acquittance	Wait	Arrangement with creditors	Other
TOTAL	8,726	8,222	504	1,844	6,882	8,608	118	3	53	60	2
Andalucía	921	838	83	265	656	917	4	3	0	1	0
Aragón	297	283	14	38	259	293	4	0	0	4	0
Asturias, Principado de	185	175	10	37	148	182	3	0	1	1	1
Baleares, Illes	280	236	44	181	99	280	0	0	0	0	0
Canarias	247	229	18	89	158	174	73	0	51	22	0
Cantabria	97	94	3	43	54	97	0	0	0	0	0
Castilla y León	358	329	29	76	282	356	2	0	1	1	0
Castilla-La Mancha	342	307	35	78	264	339	3	0	0	3	0
Cataluña	1,879	1,822	57	213	1,666	1,865	14	0	0	13	1
Comunitat Valenciana	1,355	1,284	71	391	964	1,353	2	0	0	2	0
Extremadura	97	91	6	21	76	94	3	0	0	3	0
Galicia	539	509	30	65	474	534	5	0	0	5	0
Madrid, Comunidad de	1,077	1,016	61	258	819	1,073	4	0	0	4	0
Murcia, Región de	281	261	20	21	260	280	1	0	0	1	0
Navarra, Comunidad Foral de	127	120	7	30	97	127	0	0	0	0	0
Pais Vasco	568	560	8	25	543	568	0	0	0	0	0
Rioja, La	71	63	8	13	58	71	0	0	0	0	0
Ceuta	0	0	0	0	0	0	0	0	0	0	0
Melilla	5	5	0	0	5	5	0	0	0	0	0

Year 2012. Provisional data

TP2. Bankrupt debtors by legal status

	Total	Individuals without business activity	Companies			
			Individuals	Public Limited Company	Private Limited Company	Other
TOTAL	8,726	927	265	1,387	5,990	157
Andalucía	921	111	43	120	626	21
Aragón	297	26	11	48	203	9
Asturias, Principado de	185	24	7	43	108	3
Balears, Illes	280	40	14	23	203	0
Canarias	247	58	9	19	156	5
Cantabria	97	8	1	12	76	0
Castilla y León	358	30	11	72	238	7
Castilla-La Mancha	342	61	12	55	208	6
Cataluña	1,879	182	48	341	1,286	22
Comunitat Valenciana	1,355	139	34	134	1,022	26
Extremadura	97	10	5	20	61	1
Galicia	539	58	15	63	396	7
Madrid, Comunidad de	1,077	106	20	246	686	19
Murcia, Región de	281	42	19	29	179	12
Navarra, Comunidad Foral de	127	8	0	22	95	2
Pais Vasco	568	20	14	124	393	17
Rioja, La	71	1	1	16	53	0
Ceuta	0	0	0	0	0	0
Melilla	5	3	1	0	1	0

TP3. Bankrupt companies by main economic activity

(Continue)

	Total	Agriculture and fishing	Industry				Energy
			Intermediate goods	Capital goods	Durable consumer goods	Non-durable consumer goods	
TOTAL	7,799	71	575	417	136	299	17
Andalucía	810	15	28	33	13	22	0
Aragón	271	5	33	19	6	9	1
Asturias, Principado de	161	0	12	14	0	8	0
Balears, Illes	240	0	10	7	1	10	0
Canarias	189	5	11	4	0	2	0
Cantabria	89	0	7	5	1	1	0
Castilla y León	328	5	38	13	2	18	4
Castilla-La Mancha	281	3	21	16	7	15	0
Cataluña	1,697	5	130	96	24	58	2
Comunitat Valenciana	1,216	8	91	57	40	51	3
Extremadura	87	3	8	2	2	7	0
Galicia	481	2	42	42	3	26	2
Madrid, Comunidad de	971	6	32	22	12	31	4
Murcia, Región de	239	10	18	9	9	6	0
Navarra, Comunidad Foral de	119	1	19	17	3	4	0
Pais Vasco	548	1	67	57	12	26	1
Rioja, La	70	2	8	4	1	5	0
Ceuta	0	0	0	0	0	0	0
Melilla	2	0	0	0	0	0	0

(Continue)

	Construction		Wholesale trade	Vehicles and retail trade	Transportation, storage	Accommodation and food service activities	Information and communications
	Construction of buildings	Other construction					
TOTAL	1,552	798	1,275	172	343	252	146
Andalucía	210	71	133	27	31	26	13
Aragón	58	23	48	3	12	8	0
Asturias, Principado de	36	21	25	2	9	5	4
Balears, Illes	47	20	43	5	6	18	6
Canarias	37	19	46	6	7	8	1
Cantabria	27	12	7	8	1	4	1
Castilla y León	72	38	47	7	14	15	5
Castilla-La Mancha	60	29	39	3	11	4	8
Cataluña	288	191	287	34	85	49	38
Comunitat Valenciana	255	108	208	22	71	30	14
Extremadura	28	8	9	5	0	3	0
Galicia	105	43	96	10	20	11	1
Madrid, Comunidad de	195	93	144	26	30	46	33
Murcia, Región de	47	16	47	5	18	4	3
Navarra, Comunidad Foral de	23	14	10	2	3	4	0
Pais Vasco	44	85	77	6	23	14	17
Rioja, La	19	7	8	1	2	3	2
Ceuta	0	0	0	0	0	0	0
Melilla	1	0	1	0	0	0	0

Year 2012. Provisional data

TP3. Bankrupt companies by main economic activity

	(Conclusion)				
	Real estate, financial and insu- rance activities	Professional, scientific and tech- nical activities	Administrative and support service activities	Other services	Unclassified
TOTAL	242	326	272	280	626
Andalucía	30	33	24	32	69
Aragón	6	5	6	5	24
Asturias, Principado de	1	7	2	6	9
Balears, Illes	11	10	9	9	28
Canarias	9	5	4	8	17
Cantabria	2	2	1	2	8
Castilla y León	8	7	9	11	15
Castilla-La Mancha	3	11	11	9	31
Cataluña	65	80	72	63	130
Comunitat Valenciana	48	53	30	39	88
Extremadura	4	0	0	4	4
Galicia	2	20	16	8	32
Madrid, Comunidad de	38	57	52	53	97
Murcia, Región de	5	2	9	6	25
Navarra, Comunidad Foral de	2	6	2	4	5
Pais Vasco	8	28	24	20	38
Rioja, La	0	0	1	1	6
Ceuta	0	0	0	0	0
Melilla	0	0	0	0	0

Year 2012. Provisional data

TP4. Bankrupt companies by number of employees

	Total	Number of employees								Un-classified
		0	1-2	3-5	6-9	10-19	20-49	50-99	More than 100	
TOTAL	7,799	894	1,298	1,192	1,119	1,252	933	309	176	626
Andalucía	810	128	133	120	90	111	109	32	18	69
Aragón	271	33	34	43	41	53	31	6	6	24
Asturias, Principado de	161	11	20	18	30	29	26	12	6	9
Balears, Illes	240	42	38	39	32	31	24	5	1	28
Canarias	189	16	36	32	18	33	22	7	8	17
Cantabria	89	16	10	11	14	10	10	7	3	8
Castilla y León	328	23	57	52	53	63	49	10	6	15
Castilla-La Mancha	281	29	48	36	38	43	38	10	8	31
Cataluña	1,697	181	282	274	249	276	208	63	34	130
Comunitat Valenciana	1,216	145	250	190	165	203	122	30	23	88
Extremadura	87	12	13	9	12	17	11	6	3	4
Galicia	481	44	72	77	69	86	66	27	8	32
Madrid, Comunidad de	971	130	162	130	131	151	91	50	29	97
Murcia, Región de	239	33	43	40	31	23	22	11	11	25
Navarra, Comunidad Foral de	119	9	15	12	26	21	19	9	3	5
Pais Vasco	548	37	73	103	105	90	75	18	9	38
Rioja, La	70	4	12	6	14	12	10	6	0	6
Ceuta	0	0	0	0	0	0	0	0	0	0
Melilla	2	0	0	0	2	0	0	0	0	0

Year 2012. Provisional data

TP5. Bankrupt companies by turnover bracket

	Total	Business volume interval (million euros)						Un-classified	
		Up to 0,25	(0,25-0,50]	(0,50-1]	(1-2]	(2 a 5]	(5 a 10]		More than 10
TOTAL	7,799	2,427	838	1,092	1,040	985	413	378	626
Andalucía	810	242	77	93	115	111	56	47	69
Aragón	271	61	29	37	48	34	21	17	24
Asturias, Principado de	161	29	16	23	24	29	17	14	9
Baleares, Illes	240	78	30	43	33	16	6	6	28
Canarias	189	67	19	20	23	18	14	11	17
Cantabria	89	27	8	10	10	14	6	6	8
Castilla y León	328	66	43	55	61	52	18	18	15
Castilla-La Mancha	281	66	29	53	43	36	9	14	31
Cataluña	1,697	420	213	259	261	255	87	72	130
Comunitat Valenciana	1,216	342	159	216	164	156	49	42	88
Extremadura	87	19	8	19	14	10	5	8	4
Galicia	481	107	68	80	73	63	29	29	32
Madrid, Comunidad de	971	257	98	135	128	132	59	65	97
Murcia, Región de	239	70	24	40	18	29	19	14	25
Navarra, Comunidad Foral de	119	95	1	0	5	6	3	4	5
Pais Vasco	548	463	6	1	10	12	9	9	38
Rioja, La	70	16	10	8	10	12	6	2	6
Ceuta	0	0	0	0	0	0	0	0	0
Melilla	2	2	0	0	0	0	0	0	0

Year 2012. Provisional data

TP6. Bankrupt companies by old section

	Total	Age (in years)						Un-classified
		Up to 4	From 5 to 8	From 9 to 12	From 13 to 16	From 17 to 19	20 or more	
TOTAL	7,799	773	1,774	1,283	1,017	774	1,858	320
Andalucía	810	83	181	163	126	78	149	30
Aragón	271	22	56	40	24	35	77	17
Asturias, Principado de	161	16	27	22	25	27	41	3
Balears, Illes	240	21	70	41	32	20	48	8
Canarias	189	12	40	35	33	16	46	7
Cantabria	89	11	31	8	9	7	18	5
Castilla y León	328	28	62	47	48	25	106	12
Castilla-La Mancha	281	26	81	44	36	25	56	13
Cataluña	1,697	189	378	242	209	172	431	76
Comunitat Valenciana	1,216	91	277	209	169	127	302	41
Extremadura	87	8	24	18	10	8	18	1
Galicia	481	44	119	83	54	45	115	21
Madrid, Comunidad de	971	115	230	168	123	77	211	47
Murcia, Región de	239	18	53	55	30	24	50	9
Navarra, Comunidad Foral de	119	9	27	15	18	12	34	4
País Vasco	548	76	104	83	63	63	135	24
Rioja, La	70	4	13	10	8	13	20	2
Ceuta	0	0	0	0	0	0	0	0
Melilla	2	0	1	0	0	0	1	0