

6 November 2013

## Bankruptcy Proceedings Statistics (BPS)

Third quarter 2013. *Provisional data*

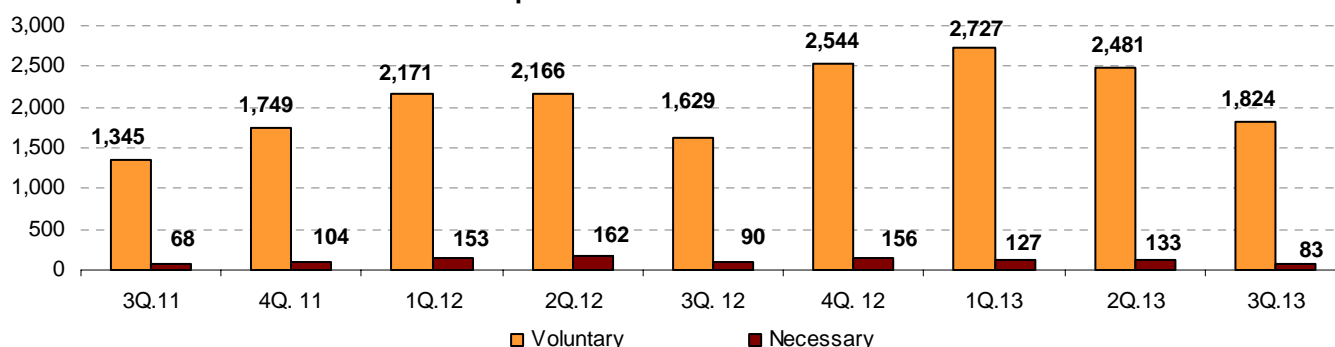
**In the third quarter of 2013, the number of debtors processed increases 10.9% in the annual rate**

**27% of companies processed had *Construction* as their main activity**

During the third quarter of 2013, the number of debtors processed reached 1,907, indicating an increase of 10.9%, as compared with the same period of the previous year. The number of debtors processed decreased 27.0%, as compared with the second quarter.

By type of bankruptcy, 1,824 were volunteers (12.0% more than in the third quarter of 2012) and 83 were necessary (7.8% less). Considering the type of process, ordinary processes increased by 2.7% and abbreviated processes did so by 13.1%.

**Evolution of the number of debtors processed\***



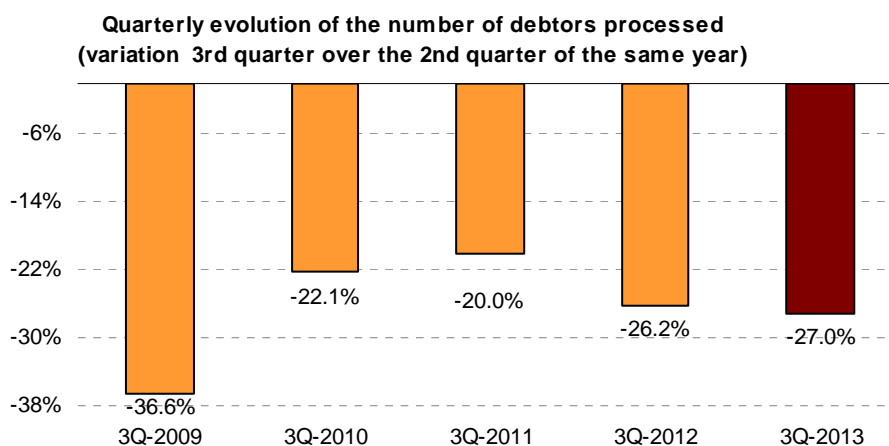
### Number of debtors processed by legal nature and type of process .

3rd quarter 2013

|  | Total | % Variation        |             |                         |
|--|-------|--------------------|-------------|-------------------------|
|  |       | Quarter-on-quarter | Interannual | Interannual accumulated |
| <b>Debtors processed</b>                     | 1,907 | -27.0              | 10.9        | 15.8                    |
| <b>Individuals without business activity</b> | 158   | -23.3              | -19.4       | -21.5                   |
| <b>Companies declared bankrupt</b>           | 1,749 | -27.4              | 14.8        | 20.4                    |
| Individuals with business activity           | 49    | -12.5              | -2.0        | -22.8                   |
| Public Limited Company (P.L.C.)              | 296   | -29.7              | 13.4        | 20.6                    |
| Private Limited Company (L.T.D.)             | 1,356 | -27.9              | 14.4        | 22.5                    |
| Other  | 48    | -5.9               | 77.8        | 36.4                    |
| <b>Type of bankruptcy</b>                    |       |                    |             |                         |
| Voluntary                                    | 1,824 | -26.5              | 12.0        | 17.9                    |
| Necessary                                    | 83    | -37.6              | -7.8        | -15.3                   |
| <b>Type of procedure</b>                     |       |                    |             |                         |
| Ordinary                                     | 375   | -34.2              | 2.7         | 38.7                    |
| Abbreviated                                  | 1,532 | -25.0              | 13.1        | 9.7                     |

## Evolution of the quarterly rate

In order to contribute to the analysis and interpretation of the data, the following chart shows the quarterly variation of the number of debtors processed between the third and the second quarter of the last five years. In 2013 the quarterly rate stood at  $-27.0\%$ , the lowest since 2010 and eight tenths below that registered last year.



## Processed companies by legal nature and turnover bracket

Out of the 1,907 debtors processed in the third quarter, 1,749 were companies (physical persons with business activity and legal persons) and 158 were physical persons without business activity, representing 91.7% and 8.3% of the total debtors, respectively.

In the third quarter, the number of companies processed increased by 14.8%, as compared with the same quarter of the previous year.

According to the legal nature, 77.5% of the companies processed were Private Limited Companies.

26.9% of the companies processed were within the lowest turnover bracket (up to 250,000 euros) and were mainly Private Limited Companies.

## Number of companies declared bankrupt by legal nature and turnover bracket .Million euros per year. 3<sup>rd</sup> quarter 2013

|                         | Total | Individuals.* | P.L.C. | L.T.D. | Others |
|-------------------------|-------|---------------|--------|--------|--------|
| <b>TOTAL</b>            | 1,749 | 49            | 296    | 1,356  | 48     |
| Less or equal than 0,25 | 470   | 41            | 41     | 367    | 21     |
| More than 0,25 to 0,5   | 188   | 3             | 15     | 169    | 1      |
| More than 0,5 to 1      | 228   | 0             | 33     | 193    | 2      |
| More than 1 to 2        | 229   | 1             | 47     | 176    | 5      |
| More than 2 to 5        | 200   | 0             | 55     | 144    | 1      |
| More than 5             | 156   | 0             | 72     | 79     | 5      |
| Without classification  | 278   | 4             | 33     | 228    | 13     |

\* Individuals with business activity

**Companies declared bankrupt by economic activity and number of employees**

26.6% of the companies processed had *Construction* as their main economic activity, 19.1% had *Trade*, and 18.0% *Industry and energy*.

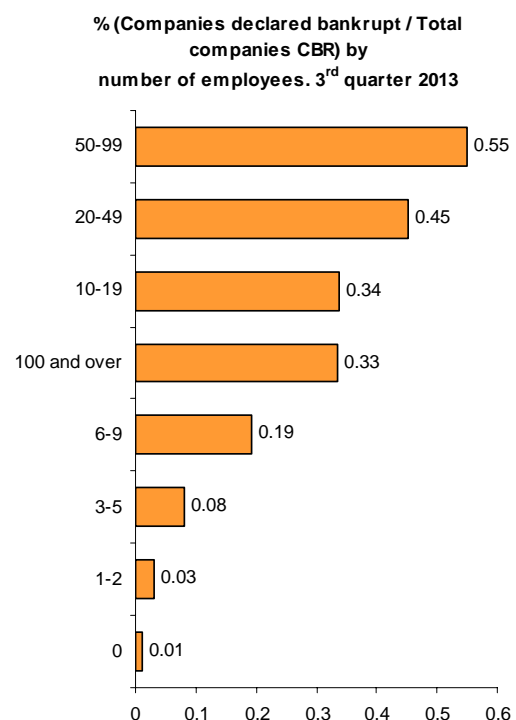
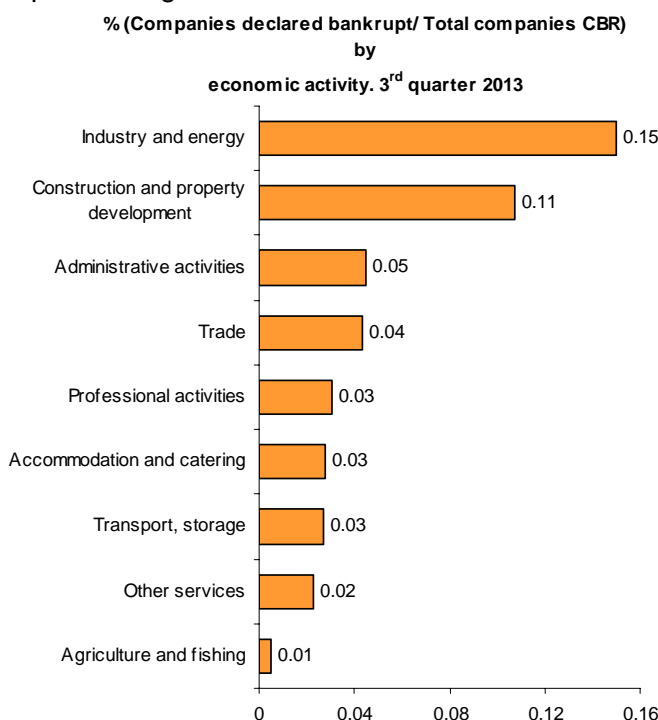
Regarding the number of employees, 75.8% of the total companies processed had less than 20. And, among these, 39.9% had less than three employees.

**Number of companies declared bankrupt by main economic activity and number of employees. 3rd quarter 2013**

|                                       | Number of employees |     |     |     |     |       |       |       |              |                |
|---------------------------------------|---------------------|-----|-----|-----|-----|-------|-------|-------|--------------|----------------|
|                                       | Total               | 0   | 1-2 | 3-5 | 6-9 | 10-19 | 20-49 | 50-99 | 100 and more | Without class. |
| TOTAL                                 | 1,749               | 230 | 299 | 247 | 265 | 285   | 204   | 74    | 42           | 103            |
| Agriculture and fishing               | 16                  | 3   | 4   | 3   | 3   | 2     | 1     | 0     | 0            | 0              |
| Industry and energy                   | 314                 | 11  | 20  | 35  | 56  | 90    | 69    | 21    | 12           | 0              |
| Construction and property development | 466                 | 131 | 91  | 61  | 42  | 67    | 54    | 15    | 5            | 0              |
| Trade                                 | 334                 | 27  | 61  | 74  | 70  | 47    | 31    | 17    | 7            | 0              |
| Transport, storage                    | 56                  | 0   | 12  | 12  | 10  | 9     | 10    | 1     | 2            | 0              |
| Accommodation and catering            | 79                  | 6   | 11  | 11  | 21  | 17    | 8     | 3     | 2            | 0              |
| Professional activities               | 116                 | 12  | 39  | 19  | 19  | 15    | 5     | 4     | 3            | 0              |
| Administrative activities             | 74                  | 13  | 10  | 9   | 10  | 7     | 12    | 7     | 6            | 0              |
| Other services                        | 191                 | 27  | 51  | 23  | 34  | 31    | 14    | 6     | 5            | 0              |
| Without classification                | 103                 | 0   | 0   | 0   | 0   | 0     | 0     | 0     | 0            | 103            |

Taking the total of companies existing in each economic activity as a reference, 0.15% of the companies of *Industry and energy* started a bankruptcy proceeding in the third quarter of 2013. In contrast, only 0.01% of the companies of *Agriculture, livestock and fishing* were affected by bankruptcy proceedings.

However, taking into account the number of the companies existing by employee bracket, 0.55% of the companies between 50-99 employees started a bankruptcy proceeding, whereas only 0.01% of the companies without employees were affected by bankruptcy proceedings.



### Companies declared bankrupt by seniority

25.0% of the total of companies processed in the third quarter of 2013 had a seniority of 20 years or over. In turn, 12.3% had four or less years of seniority.

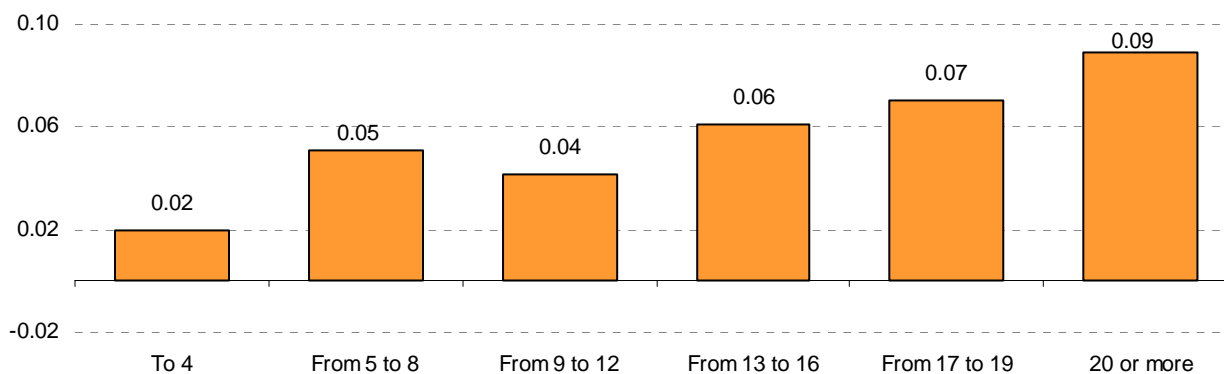
Out of the companies processed with less than four years of seniority, 40.7% were dedicated to *Trade and Construction*. However, within the companies processed with 20 or more years of seniority, 54.9% were dedicated to *Industry and energy and Trade*.

### Number of companies declared bankrupt by main economic activity and seniority. 3rd quarter 2013

|                                       | Age (in years) |      |             |              |               |               |            | Un-<br>classified |
|---------------------------------------|----------------|------|-------------|--------------|---------------|---------------|------------|-------------------|
|                                       | Total          | To 4 | From 5 to 8 | From 9 to 12 | From 13 to 16 | From 17 to 19 | 20 or more |                   |
| <b>TOTAL</b>                          | 1,749          | 216  | 364         | 302          | 231           | 157           | 437        | 42                |
| Agriculture and fishing               | 16             | 4    | 3           | 5            | 0             | 1             | 3          | 0                 |
| Industry and energy                   | 314            | 22   | 27          | 43           | 45            | 40            | 137        | 0                 |
| Construction and property development | 466            | 37   | 136         | 81           | 66            | 49            | 97         | 0                 |
| Trade                                 | 334            | 51   | 54          | 54           | 46            | 26            | 103        | 0                 |
| Transport, storage                    | 56             | 6    | 12          | 9            | 5             | 7             | 17         | 0                 |
| Accommodation and catering            | 79             | 23   | 14          | 15           | 7             | 7             | 13         | 0                 |
| Professional activities               | 116            | 14   | 27          | 27           | 23            | 5             | 20         | 0                 |
| Administrative activities             | 74             | 15   | 18          | 7            | 6             | 9             | 19         | 0                 |
| Other services                        | 191            | 41   | 48          | 40           | 25            | 9             | 28         | 0                 |
| Without classification                | 103            | 3    | 25          | 21           | 8             | 4             | 0          | 42                |

Taking as a reference the stock of companies existing by seniority, 0.09% of the companies of 20 years or over were affected by a bankruptcy proceeding. However, 0.02% of the total companies with up to 4 years of seniority started a bankruptcy proceeding.

% Companies declared bankrupt / Total companies CBR by seniority. 3th quarter 2013



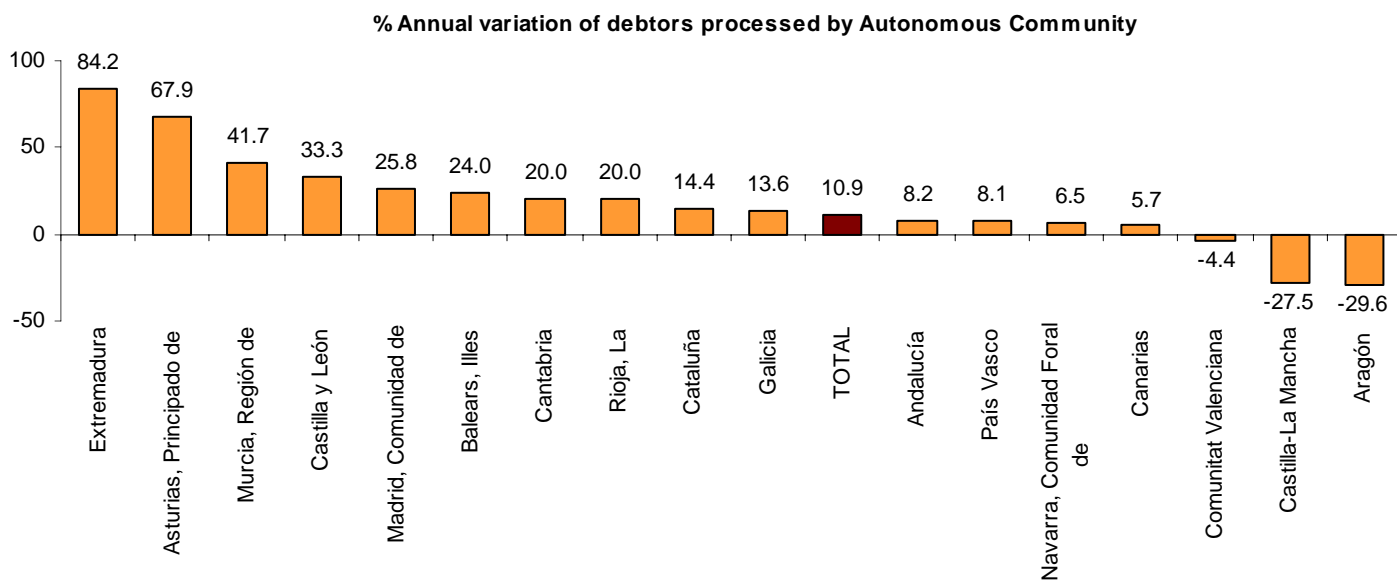
### Geographical distribution of debtors processed

The Autonomous Communities of Cataluña, Comunidad de Madrid, Comunitat Valenciana and Andalucía amounted to 59.5% of the total debtors processed in the third quarter of 2013.

The Autonomous Communities that registered the greatest decrease in the number of debtors processed considering the annual variation rate were Aragón (-29.6%), Castilla-La Mancha (-27.5%) and Comunitat Valenciana. In turn, Extremadura (84.2%) and Principado de Asturias (67.9%) registered the greatest annual variation rate.

## Number of processed debtors by type of bankruptcy, type of procedure and existence of anticipated proposals for agreement. 3<sup>rd</sup> quarter 2013

| Autonomous City and Community | Total | Type of bankruptcy |           | Type of procedure |         | Existence of anticipated proposal for agreement |     |
|-------------------------------|-------|--------------------|-----------|-------------------|---------|---|-----|
|                               |       | Voluntary          | Necessary | Ordinary          | Abbrev. | No  | Yes |
| <b>TOTAL</b>                  | 1,907 | 1,824              | 83        | 375               | 1,532   | 1,873   | 34  |
| Andalucía                     | 212   | 199                | 13        | 83                | 129     | 206   | 6   |
| Aragón                        | 57    | 56                 | 1         | 18                | 39      | 57  | 0   |
| Asturias, Principado de       | 47    | 44                 | 3         | 10                | 37      | 47  | 0   |
| Balears, Illes                | 62    | 58                 | 4         | 28                | 34      | 61  | 1   |
| Canarias                      | 56    | 52                 | 4         | 20                | 36      | 39  | 17  |
| Cantabria                     | 30    | 30                 | 0         | 6                 | 24      | 30  | 0   |
| Castilla y León               | 88    | 85                 | 3         | 21                | 67      | 88  | 0   |
| Castilla-La Mancha            | 50    | 47                 | 3         | 8                 | 42      | 50  | 0   |
| Cataluña                      | 421   | 405                | 16        | 42                | 379     | 416   | 5   |
| Comunitat Valenciana          | 239   | 228                | 11        | 44                | 195     | 238   | 1   |
| Extremadura                   | 35    | 31                 | 4         | 9                 | 26      | 35  | 0   |
| Galicia                       | 125   | 115                | 10        | 17                | 108     | 122   | 3   |
| Madrid, Comunidad de          | 263   | 256                | 7         | 50                | 213     | 262   | 1   |
| Murcia, Región de             | 51    | 49                 | 2         | 2                 | 49      | 51  | 0   |
| Navarra, Comunidad Foral de   | 33    | 33                 | 0         | 9                 | 24      | 33  | 0   |
| País Vasco                    | 120   | 118                | 2         | 7                 | 113     | 120   | 0   |
| Rioja, La                     | 18    | 18                 | 0         | 1                 | 17      | 18  | 0   |
| Ceuta                         | 0     | 0                  | 0         | 0                 | 0       | 0   | 0   |
| Melilla                       | 0     | 0                  | 0         | 0                 | 0       | 0   | 0   |



Note: In July, the response rate of the courts was 98.9%, in other words, out of the 89 courts to which the questionnaire was sent, 1 did not submit information by the closing date of the statistics.

## Bankruptcy Proceedings Statistics

3<sup>rd</sup> quarter 2013. Provisional data

### BPS.1 Bankrupt debtors by type of bankruptcy proceeding, type of procedure, existence of anticipated proposals of agreement and proposed content

|                             | Total        | Proceeding type |           | Procedure type |              | Existence of anticipated proposal |           | Proposed content |          |                            |          |  |
|-----------------------------|--------------|-----------------|-----------|----------------|--------------|-----------------------------------|-----------|------------------|----------|----------------------------|----------|--|
|                             |              | Voluntary       | Necessary | Ordinary       | Abbreviated  | No                                | Yes       | Acquittance      | Wait     | Arrangement with creditors | Other    |  |
|                             |              |                 |           |                |              |                                   |           |                  |          |                            |          |  |
| <b>TOTAL</b>                | <b>1,907</b> | <b>1,824</b>    | <b>83</b> | <b>375</b>     | <b>1,532</b> | <b>1,873</b>                      | <b>34</b> | <b>14</b>        | <b>3</b> | <b>12</b>                  | <b>5</b> |  |
| Andalucía                   | 212          | 199             | 13        | 83             | 129          | 206                               | 6         | 0                | 0        | 1                          | 5        |  |
| Aragón                      | 57           | 56              | 1         | 18             | 39           | 57                                | 0         | 0                | 0        | 0                          | 0        |  |
| Asturias, Principado de     | 47           | 44              | 3         | 10             | 37           | 47                                | 0         | 0                | 0        | 0                          | 0        |  |
| Balears, Illes              | 62           | 58              | 4         | 28             | 34           | 61                                | 1         | 0                | 0        | 1                          | 0        |  |
| Canarias                    | 56           | 52              | 4         | 20             | 36           | 39                                | 17        | 14               | 3        | 0                          | 0        |  |
| Cantabria                   | 30           | 30              | 0         | 6              | 24           | 30                                | 0         | 0                | 0        | 0                          | 0        |  |
| Castilla y León             | 88           | 85              | 3         | 21             | 67           | 88                                | 0         | 0                | 0        | 0                          | 0        |  |
| Castilla-La Mancha          | 50           | 47              | 3         | 8              | 42           | 50                                | 0         | 0                | 0        | 0                          | 0        |  |
| Cataluña                    | 421          | 405             | 16        | 42             | 379          | 416                               | 5         | 0                | 0        | 5                          | 0        |  |
| Comunitat Valenciana        | 239          | 228             | 11        | 44             | 195          | 238                               | 1         | 0                | 0        | 1                          | 0        |  |
| Extremadura                 | 35           | 31              | 4         | 9              | 26           | 35                                | 0         | 0                | 0        | 0                          | 0        |  |
| Galicia                     | 125          | 115             | 10        | 17             | 108          | 122                               | 3         | 0                | 0        | 3                          | 0        |  |
| Madrid, Comunidad de        | 263          | 256             | 7         | 50             | 213          | 262                               | 1         | 0                | 0        | 1                          | 0        |  |
| Murcia, Región de           | 51           | 49              | 2         | 2              | 49           | 51                                | 0         | 0                | 0        | 0                          | 0        |  |
| Navarra, Comunidad Foral de | 33           | 33              | 0         | 9              | 24           | 33                                | 0         | 0                | 0        | 0                          | 0        |  |
| Pais Vasco                  | 120          | 118             | 2         | 7              | 113          | 120                               | 0         | 0                | 0        | 0                          | 0        |  |
| Rioja, La                   | 18           | 18              | 0         | 1              | 17           | 18                                | 0         | 0                | 0        | 0                          | 0        |  |
| Ceuta                       | 0            | 0               | 0         | 0              | 0            | 0                                 | 0         | 0                | 0        | 0                          | 0        |  |
| Melilla                     | 0            | 0               | 0         | 0              | 0            | 0                                 | 0         | 0                | 0        | 0                          | 0        |  |

**3<sup>rd</sup> quarter 2013. Provisional data**

**BPS.2 Bankrupt debtors by legal nature**

|                             | Total        | Individuals<br>without business<br>activity | Companies   |                           |                            |           |
|-----------------------------|--------------|---|-------------|---------------------------|----------------------------|-----------|
|                             |              |   | Individuals | Public Limited<br>Company | Private Limited<br>Company | Other     |
| <b>TOTAL</b>                | <b>1,907</b> | <b>158</b>                                  | <b>49</b>   | <b>296</b>                | <b>1,356</b>               | <b>48</b> |
| Andalucía                   | 212          | 30  | 5           | 22                        | 146                        | 9         |
| Aragón                      | 57           | 1   | 2           | 11                        | 41                         | 2         |
| Asturias, Principado de     | 47           | 8   | 3           | 9                         | 27                         | 0         |
| Balears, Illes              | 62           | 9   | 2           | 9                         | 40                         | 2         |
| Canarias                    | 56           | 7   | 2           | 6                         | 39                         | 2         |
| Cantabria                   | 30           | 0   | 0           | 1                         | 29                         | 0         |
| Castilla y León             | 88           | 10  | 4           | 10                        | 58                         | 6         |
| Castilla-La Mancha          | 50           | 3   | 2           | 4                         | 38                         | 3         |
| Cataluña                    | 421          | 31  | 12          | 72                        | 300                        | 6         |
| Comunitat Valenciana        | 239          | 18  | 6           | 26                        | 182                        | 7         |
| Extremadura                 | 35           | 1   | 1           | 9                         | 23                         | 1         |
| Galicia                     | 125          | 2   | 0           | 12                        | 111                        | 0         |
| Madrid, Comunidad de        | 263          | 24  | 6           | 69                        | 156                        | 8         |
| Murcia, Región de           | 51           | 8   | 2           | 5                         | 36                         | 0         |
| Navarra, Comunidad Foral de | 33           | 2   | 0           | 7                         | 24                         | 0         |
| Pais Vasco                  | 120          | 4   | 2           | 20                        | 92                         | 2         |
| Rioja, La                   | 18           | 0   | 0           | 4                         | 14                         | 0         |
| Ceuta                       | 0            | 0   | 0           | 0                         | 0                          | 0         |
| Melilla                     | 0            | 0   | 0           | 0                         | 0                          | 0         |

**3<sup>rd</sup> quarter 2013. Provisional data**

**BPS.3 Bankrupt companies by main economic activity**

(Continue)

|                             | Total        | Agriculture and fishing | Industry           |               |                        |                            | Energy    |
|-----------------------------|--------------|-------------------------|--------------------|---------------|------------------------|----------------------------|-----------|
|                             |              |                         | Intermediate goods | Capital goods | Durable consumer goods | Non-durable consumer goods |           |
| <b>TOTAL</b>                | <b>1,749</b> | <b>16</b>               | <b>125</b>         | <b>77</b>     | <b>26</b>              | <b>71</b>                  | <b>15</b> |
| Andalucía                   | 182          | 3                       | 6                  | 8             | 4                      | 9                          | 1         |
| Aragón                      | 56           | 1                       | 4                  | 4             | 0                      | 2                          | 0         |
| Asturias, Principado de     | 39           | 0                       | 1                  | 2             | 4                      | 2                          | 0         |
| Balears, Illes              | 53           | 0                       | 6                  | 0             | 0                      | 0                          | 0         |
| Canarias                    | 49           | 0                       | 0                  | 2             | 0                      | 1                          | 0         |
| Cantabria                   | 30           | 0                       | 2                  | 1             | 0                      | 1                          | 0         |
| Castilla y León             | 78           | 0                       | 11                 | 2             | 3                      | 2                          | 1         |
| Castilla-La Mancha          | 47           | 0                       | 3                  | 4             | 0                      | 2                          | 0         |
| Cataluña                    | 390          | 4                       | 37                 | 18            | 2                      | 17                         | 7         |
| Comunitat Valenciana        | 221          | 2                       | 16                 | 7             | 5                      | 10                         | 2         |
| Extremadura                 | 34           | 1                       | 0                  | 0             | 0                      | 2                          | 0         |
| Galicia                     | 123          | 1                       | 12                 | 7             | 2                      | 4                          | 1         |
| Madrid, Comunidad de        | 239          | 2                       | 10                 | 11            | 1                      | 11                         | 3         |
| Murcia, Región de           | 43           | 1                       | 2                  | 1             | 1                      | 1                          | 0         |
| Navarra, Comunidad Foral de | 31           | 1                       | 2                  | 1             | 0                      | 1                          | 0         |
| Pais Vasco                  | 116          | 0                       | 12                 | 9             | 3                      | 3                          | 0         |
| Rioja, La                   | 18           | 0                       | 1                  | 0             | 1                      | 3                          | 0         |
| Ceuta                       | 0            | 0                       | 0                  | 0             | 0                      | 0                          | 0         |
| Melilla                     | 0            | 0                       | 0                  | 0             | 0                      | 0                          | 0         |

(Continue)

|                             | Construction              |                    | Wholesale trade | Vehicles and retail trade | Transportation, storage | Accommodation and food service activities | Information and communications |
|-----------------------------|---------------------------|--------------------|-----------------|---------------------------|-------------------------|---|--------------------------------|
|                             | Construction of buildings | Other construction |                 |                           |                         |   |                                |
| <b>TOTAL</b>                | <b>321</b>                | <b>145</b>         | <b>279</b>      | <b>55</b>                 | <b>56</b>               | <b>79</b>                                 | <b>48</b>                      |
| Andalucía                   | 30                        | 11                 | 27              | 10                        | 5                       | 12  | 3                              |
| Aragón                      | 13                        | 5                  | 5               | 3                         | 5                       | 2   | 0                              |
| Asturias, Principado de     | 4                         | 2                  | 8               | 2                         | 2                       | 2   | 0                              |
| Balears, Illes              | 12                        | 6                  | 5               | 4                         | 0                       | 6   | 1                              |
| Canarias                    | 9                         | 7                  | 14              | 0                         | 1                       | 5   | 0                              |
| Cantabria                   | 8                         | 6                  | 4               | 1                         | 1                       | 1   | 0                              |
| Castilla y León             | 12                        | 5                  | 12              | 0                         | 3                       | 5   | 3                              |
| Castilla-La Mancha          | 13                        | 1                  | 9               | 3                         | 2                       | 2   | 1                              |
| Cataluña                    | 56                        | 30                 | 69              | 3                         | 17                      | 16  | 18                             |
| Comunitat Valenciana        | 47                        | 14                 | 34              | 8                         | 7                       | 12  | 2                              |
| Extremadura                 | 10                        | 5                  | 7               | 0                         | 0                       | 0   | 0                              |
| Galicia                     | 28                        | 14                 | 22              | 1                         | 3                       | 2   | 1                              |
| Madrid, Comunidad de        | 41                        | 19                 | 34              | 5                         | 5                       | 9   | 14                             |
| Murcia, Región de           | 10                        | 2                  | 4               | 9                         | 1                       | 0   | 1                              |
| Navarra, Comunidad Foral de | 8                         | 3                  | 4               | 0                         | 1                       | 2   | 1                              |
| Pais Vasco                  | 13                        | 15                 | 20              | 6                         | 2                       | 3   | 3                              |
| Rioja, La                   | 7                         | 0                  | 1               | 0                         | 1                       | 0   | 0                              |
| Ceuta                       | 0                         | 0                  | 0               | 0                         | 0                       | 0   | 0                              |
| Melilla                     | 0                         | 0                  | 0               | 0                         | 0                       | 0   | 0                              |



**3<sup>rd</sup> quarter 2013. Provisional data**

**BPS.3 Bankrupt companies by main economic activity**

|                             | (Conclusion)  |   |   |                   |              |
|-----------------------------|---|---|---|-------------------|--------------|
|                             | Real estate,<br>financial and insu-<br>rance activities | Professional,<br>scientific and tech-<br>nical activities | Administrative<br>and support<br>service activities | Other<br>services | Unclassified |
| <b>TOTAL</b>                | <b>72</b>   | <b>116</b>  | <b>74</b>   | <b>71</b>         | <b>103</b>   |
| Andalucía                   | 10  | 15  | 10  | 5                 | 13           |
| Aragón                      | 1   | 1   | 1   | 3                 | 6            |
| Asturias, Principado de     | 0   | 3   | 2   | 2                 | 3            |
| Balears, Illes              | 1   | 1   | 2   | 2                 | 7            |
| Canarias                    | 1   | 1   | 2   | 1                 | 5            |
| Cantabria                   | 0   | 2   | 1   | 1                 | 1            |
| Castilla y León             | 4   | 4   | 3   | 3                 | 5            |
| Castilla-La Mancha          | 0   | 0   | 1   | 2                 | 4            |
| Cataluña                    | 20  | 19  | 14  | 19                | 24           |
| Comunitat Valenciana        | 9   | 19  | 7   | 11                | 9            |
| Extremadura                 | 1   | 1   | 2   | 2                 | 3            |
| Galicia                     | 3   | 12  | 6   | 0                 | 4            |
| Madrid, Comunidad de        | 14  | 23  | 16  | 11                | 10           |
| Murcia, Región de           | 1   | 2   | 2   | 2                 | 3            |
| Navarra, Comunidad Foral de | 1   | 3   | 0   | 2                 | 1            |
| Pais Vasco                  | 4   | 9   | 4   | 5                 | 5            |
| Rioja, La                   | 2   | 1   | 1   | 0                 | 0            |
| Ceuta                       | 0   | 0   | 0   | 0                 | 0            |
| Melilla                     | 0   | 0   | 0   | 0                 | 0            |

3<sup>rd</sup> quarter 2013. Provisional data

**BPS.4 Bankrupt companies by number of employees**

|                             | Total | Number of employees |     |     |     |       |       |       |               | Un-classified |
|-----------------------------|-------|---------------------|-----|-----|-----|-------|-------|-------|---------------|---------------|
|                             |       | 0                   | 1-2 | 3-5 | 6-9 | 10-19 | 20-49 | 50-99 | More than 100 |               |
| <b>TOTAL</b>                | 1,749 | 230                 | 299 | 247 | 265 | 285   | 204   | 74    | 42            | 103           |
| Andalucía                   | 182   | 31                  | 33  | 22  | 23  | 29    | 19    | 9     | 3             | 13            |
| Aragón                      | 56    | 4                   | 7   | 9   | 10  | 8     | 9     | 2     | 1             | 6             |
| Asturias, Principado de     | 39    | 2                   | 7   | 3   | 9   | 6     | 7     | 2     | 0             | 3             |
| Balears, Illes              | 53    | 6                   | 13  | 7   | 8   | 6     | 4     | 2     | 0             | 7             |
| Canarias                    | 49    | 2                   | 7   | 8   | 7   | 8     | 9     | 2     | 1             | 5             |
| Cantabria                   | 30    | 6                   | 3   | 4   | 5   | 5     | 5     | 0     | 1             | 1             |
| Castilla y León             | 78    | 12                  | 10  | 18  | 12  | 5     | 7     | 7     | 2             | 5             |
| Castilla-La Mancha          | 47    | 8                   | 7   | 4   | 5   | 10    | 6     | 3     | 0             | 4             |
| Cataluña                    | 390   | 54                  | 61  | 63  | 64  | 58    | 43    | 10    | 13            | 24            |
| Comunitat Valenciana        | 221   | 35                  | 51  | 30  | 35  | 29    | 22    | 7     | 3             | 9             |
| Extremadura                 | 34    | 4                   | 6   | 9   | 0   | 3     | 7     | 2     | 0             | 3             |
| Galicia                     | 123   | 18                  | 22  | 14  | 20  | 22    | 17    | 3     | 3             | 4             |
| Madrid, Comunidad de        | 239   | 29                  | 41  | 28  | 30  | 53    | 24    | 14    | 10            | 10            |
| Murcia, Región de           | 43    | 6                   | 6   | 7   | 4   | 7     | 4     | 4     | 2             | 3             |
| Navarra, Comunidad Foral de | 31    | 2                   | 3   | 1   | 6   | 7     | 4     | 5     | 2             | 1             |
| Pais Vasco                  | 116   | 8                   | 18  | 18  | 23  | 26    | 15    | 2     | 1             | 5             |
| Rioja, La                   | 18    | 3                   | 4   | 2   | 4   | 3     | 2     | 0     | 0             | 0             |
| Ceuta                       | 0     | 0                   | 0   | 0   | 0   | 0     | 0     | 0     | 0             | 0             |
| Melilla                     | 0     | 0                   | 0   | 0   | 0   | 0     | 0     | 0     | 0             | 0             |

3<sup>rd</sup> quarter 2013. Provisional data

**BPS.5 Bankrupt companies by turnover bracket**

|                             | Total        | Business volume interval (million euros) |             |            |            |            |           | Un-classified |              |
|-----------------------------|--------------|--|-------------|------------|------------|------------|-----------|---------------|--------------|
|                             |              | To 0,25                                  | (0,25-0,50] | (0,50-1]   | (1-2]      | (2 a 5]    | (5 a 10]  |               | More than 10 |
| <b>TOTAL</b>                | <b>1,749</b> | <b>470</b>                               | <b>188</b>  | <b>228</b> | <b>229</b> | <b>200</b> | <b>78</b> | <b>78</b>     | <b>278</b>   |
| Andalucía                   | 182          | 59                                       | 20          | 19         | 26         | 18         | 7         | 10            | 23           |
| Aragón                      | 56           | 8  | 7           | 7          | 9          | 7          | 4         | 5             | 9            |
| Asturias, Principado de     | 39           | 7  | 6           | 9          | 3          | 5          | 3         | 2             | 4            |
| Balears, Illes              | 53           | 13                                       | 10          | 7          | 8          | 4          | 1         | 1             | 9            |
| Canarias                    | 49           | 5  | 3           | 11         | 4          | 9          | 3         | 1             | 13           |
| Cantabria                   | 30           | 9  | 5           | 2          | 6          | 2          | 3         | 0             | 3            |
| Castilla y León             | 78           | 19                                       | 10          | 14         | 9          | 10         | 2         | 6             | 8            |
| Castilla-La Mancha          | 47           | 13                                       | 4           | 6          | 8          | 4          | 5         | 1             | 6            |
| Cataluña                    | 390          | 106                                      | 44          | 66         | 61         | 52         | 13        | 14            | 34           |
| Comunitat Valenciana        | 221          | 81                                       | 25          | 29         | 23         | 26         | 10        | 8             | 19           |
| Extremadura                 | 34           | 11                                       | 2           | 0          | 3          | 7          | 4         | 1             | 6            |
| Galicia                     | 123          | 27                                       | 24          | 17         | 19         | 14         | 6         | 3             | 13           |
| Madrid, Comunidad de        | 239          | 69                                       | 21          | 36         | 36         | 25         | 12        | 21            | 19           |
| Murcia, Región de           | 43           | 9  | 3           | 2          | 8          | 9          | 4         | 4             | 4            |
| Navarra, Comunidad Foral de | 31           | 24                                       | 1           | 0          | 1          | 1          | 0         | 1             | 3            |
| Pais Vasco                  | 116          | 2  | 1           | 1          | 0          | 6          | 1         | 0             | 105          |
| Rioja, La                   | 18           | 8  | 2           | 2          | 5          | 1          | 0         | 0             | 0            |
| Ceuta                       | 0            | 0  | 0           | 0          | 0          | 0          | 0         | 0             | 0            |
| Melilla                     | 0            | 0  | 0           | 0          | 0          | 0          | 0         | 0             | 0            |

3<sup>rd</sup> quarter 2013. Provisional data

**BPS.6 Bankrupt companies by seniority**

|                             | Total | Age (in years) |             |              |               |               |            | Un-classified |
|-----------------------------|-------|----------------|-------------|--------------|---------------|---------------|------------|---------------|
|                             |       | To 4           | From 5 to 8 | From 9 to 12 | From 13 to 16 | From 17 to 19 | 20 or more |               |
| TOTAL                       | 1,749 | 216            | 364         | 302          | 231           | 157           | 437        | 42            |
| Andalucía                   | 182   | 26             | 42          | 38           | 28            | 7             | 35         | 6             |
| Aragón                      | 56    | 5              | 7           | 9            | 7             | 5             | 20         | 3             |
| Asturias, Principado de     | 39    | 6              | 10          | 5            | 1             | 5             | 10         | 2             |
| Balears, Illes              | 53    | 7              | 15          | 5            | 7             | 3             | 14         | 2             |
| Canarias                    | 49    | 2              | 8           | 10           | 12            | 5             | 12         | 0             |
| Cantabria                   | 30    | 3              | 7           | 6            | 5             | 3             | 6          | 0             |
| Castilla y León             | 78    | 7              | 15          | 11           | 12            | 9             | 22         | 2             |
| Castilla-La Mancha          | 47    | 5              | 15          | 4            | 3             | 4             | 15         | 1             |
| Cataluña                    | 390   | 54             | 84          | 59           | 45            | 38            | 98         | 12            |
| Comunitat Valenciana        | 221   | 28             | 45          | 49           | 25            | 23            | 48         | 3             |
| Extremadura                 | 34    | 7              | 5           | 6            | 4             | 3             | 7          | 2             |
| Galicia                     | 123   | 15             | 25          | 17           | 24            | 9             | 32         | 1             |
| Madrid, Comunidad de        | 239   | 26             | 47          | 45           | 31            | 16            | 69         | 5             |
| Murcia, Región de           | 43    | 2              | 8           | 8            | 5             | 10            | 9          | 1             |
| Navarra, Comunidad Foral de | 31    | 4              | 3           | 5            | 4             | 4             | 11         | 0             |
| País Vasco                  | 116   | 16             | 25          | 22           | 18            | 10            | 23         | 2             |
| Rioja, La                   | 18    | 3              | 3           | 3            | 0             | 3             | 6          | 0             |
| Ceuta                       | 0     | 0              | 0           | 0            | 0             | 0             | 0          | 0             |
| Melilla                     | 0     | 0              | 0           | 0            | 0             | 0             | 0          | 0             |