

22 April 2015

Services Sector Activity Indicators (SSAI). Base 2010
February 2015. *Provisional data*

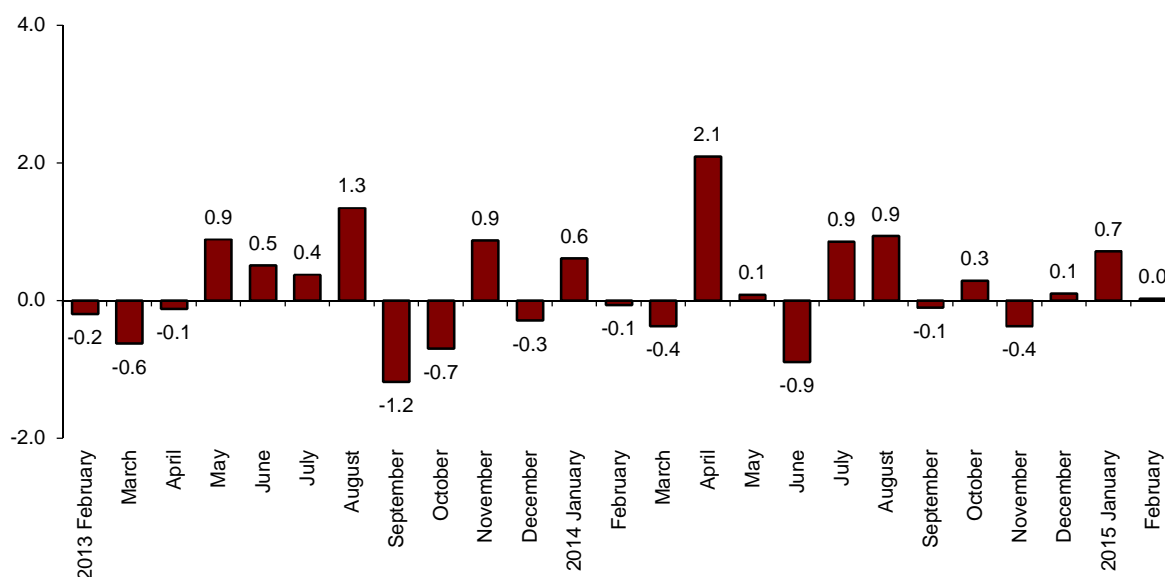
The monthly variation of turnover¹ for the market Services Sector is 0.0% after adjusting for seasonal and calendar effects

The annual rate of turnover stands at 3.3% in the seasonally and calendar adjusted series and at 3.5% in the original series

Monthly evolution of the turnover for the Market Services Sector

The monthly variation of the general index of the turnover for the Market Services Sector between February and January was 0.0%, after adjusting for seasonally and calendar effects. This rate was seven tenths below that registered in January.

**General index of the turnover for the Market Services Sector
Adjusted for seasonal and calendar effects. Monthly rate**

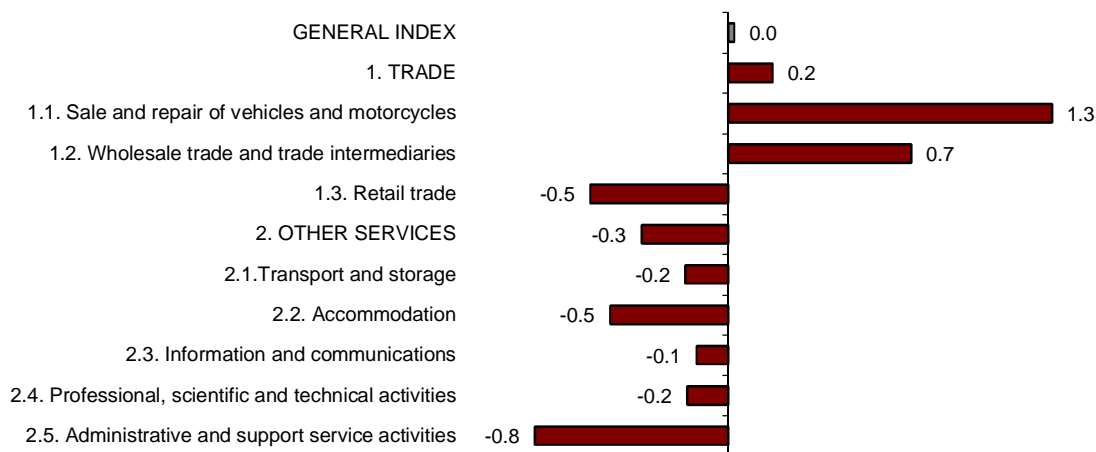


¹ As explained in the methodology for this value index, the information is presented in current terms (nominal terms), that is, without adjusting the effects in the price variation thereof.

Trade registered a monthly variation of 0.2% and the variation of *Other services* was –0.3%, after adjusting for seasonal and calendar effects.

All the sectors registered negative monthly rates, except for *Sale and repair of vehicles and motorcycles* (1.3%) and *Wholesale trade and trade intermediaries* (0.7%). *Administrative and support service activities* (–0.8%) was the sector to register the greatest decrease.

**General and by sectors turnover Index
Adjusted for seasonal and calendar effects. Monthly rate**



A more detailed analysis showed the activities that registered the highest monthly rates and those that registered the greatest decreases in February.

**Activities with the greatest monthly rates of the Services Sector turnover index
adjusted for seasonal and calendar effects**

Activity (CNAE-2009 groups)	Monthly rate (%)
Publishing activities	3.1
Employment activities	2.0
Programming and broadcasting activities	1.5

**Activities with the lowest monthly rates of the Services Sector turnover index
adjusted for seasonal and calendar effects**

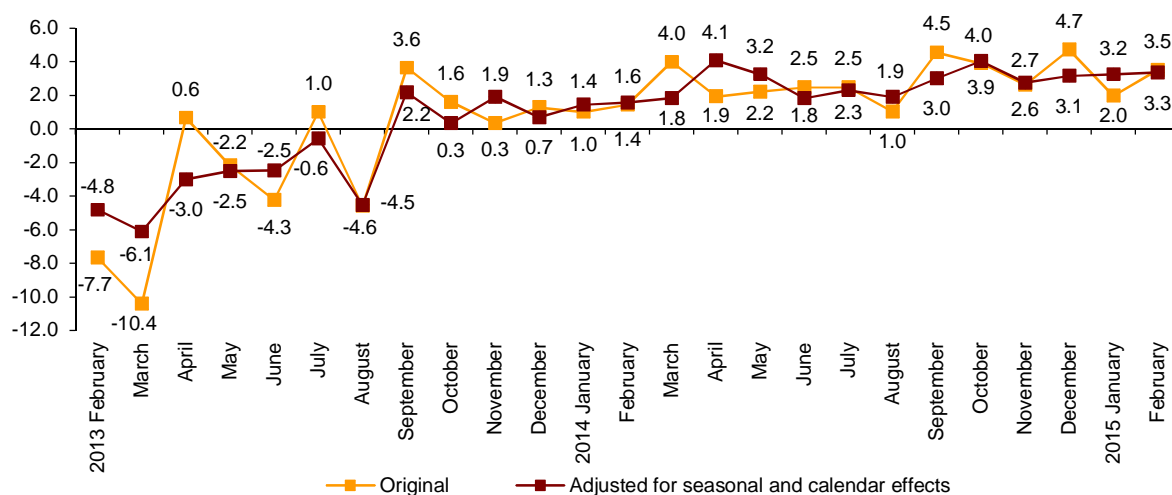
Activity (CNAE-2009 groups)	Monthly rate (%)
Office administrative and other business support activities	-3.0
Warehousing and support activities for transportation	-1.7
Advertising and market research	-1.6

Annual turnover evolution rates for the Market Services sector

In February, the general index of the turnover for the Market Services Sector, after adjusting for seasonal and calendar effects, registered a variation of 3.3%, as compared with the same month of 2014. This rate was one tenth over that registered in January.

The original series registered an annual variation of 3.5%, that is, 1.5 points higher than that recorded in January.

**General index of the turnover for the Market Services Sector
Annual Rate**



After adjusting for seasonal and calendar effects, *Trade* increased by 4.1% and *Other services* did so by 1.8%, as compared with February 2014.

All the sectors registered positive annual rates, except for *Information and communications* (-0.9%). *Sale and repair of vehicles and motorcycles* (17.2%) is the one growing the most.

Annual rates of the Turnover index for the Market Services Sector: General and by sector

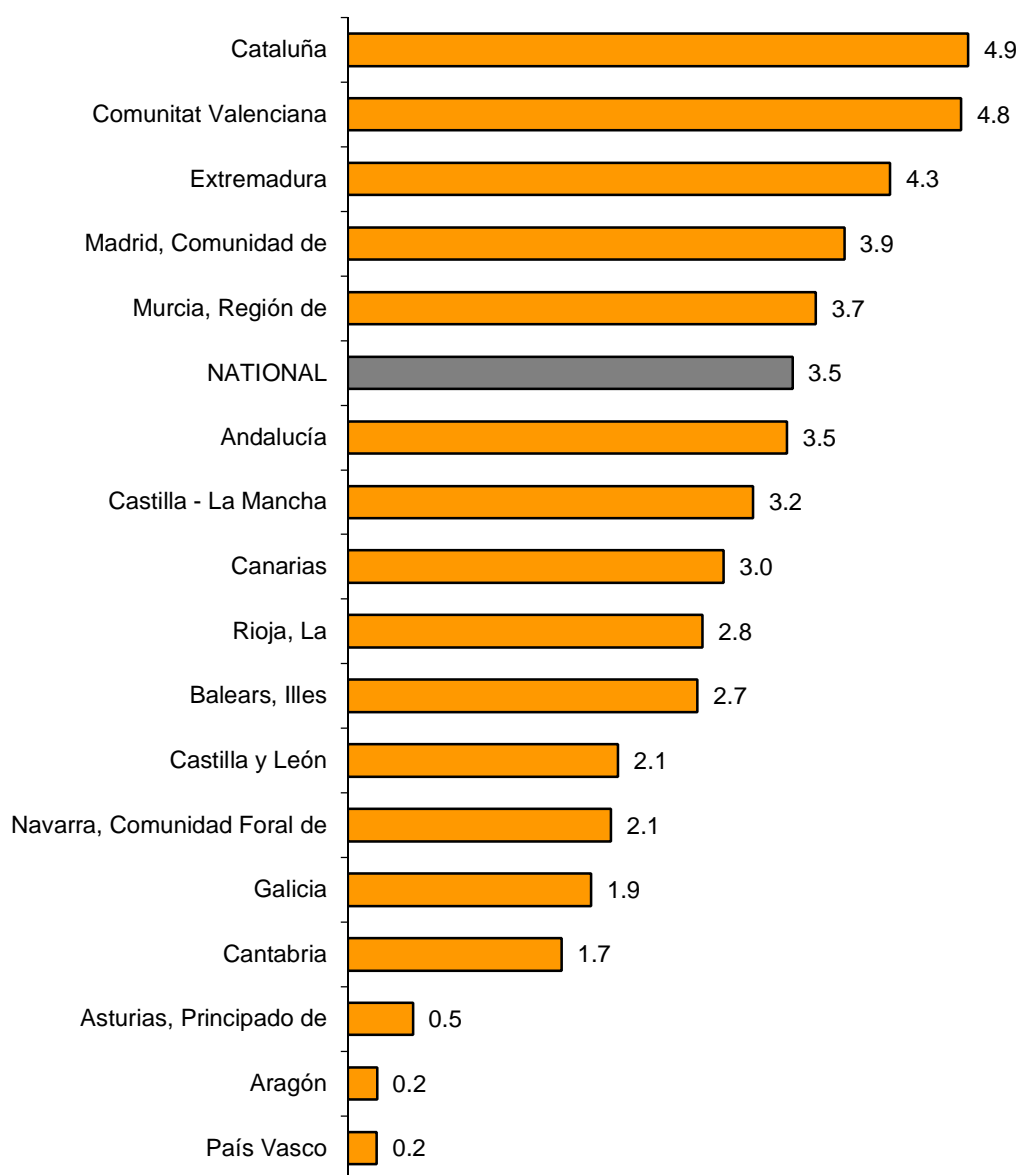
	Original index	Seasonally adjusted index
	Annual rate (%)	Annual rate (%)
GENERAL INDEX	3.5	3.3
1. TRADE	4.4	4.1
1.1. Sale and repair of vehicles and motorcycles	17.3	17.2
1.2. Wholesale trade	4.8	4.4
1.3. Retail trade	-0.1	0.6
2. OTHER SERVICES	1.8	1.8
2.1. Transport and storage	2.9	2.9
2.2. Accommodation	1.9	2.2
2.3. Information and communications	-0.7	-0.9
2.4. Professional, scientific and technical activities	1.7	1.7
2.5. Administrative and support service activities	4.2	4.1

Results by Autonomous Community. Annual turnover variation rates. Original series.

In February, all the Autonomous Communities registered increases in their turnover in the Market Service Sector as compared to the previous year.

Cataluña (4.9%), Comunitat Valenciana (4.8%) and Extremadura (4.3%) recorded the greatest annual increases. In turn, Aragón and País Vasco (both 0.2%), and Principado de Asturias (0.5%) registered the greatest decreases.

**General Indices: National and by Autonomous Community
Turnover Annual Rate**



Evolution of employed personnel

Employment in the Market Services Sector increased by 1.6% in February, as compared with the same month of the previous year. This rate was one tenth higher than that of January.

Employed personnel increased by 1.1% in the annual rate in *Trade* and 2.0% in *Other services*.

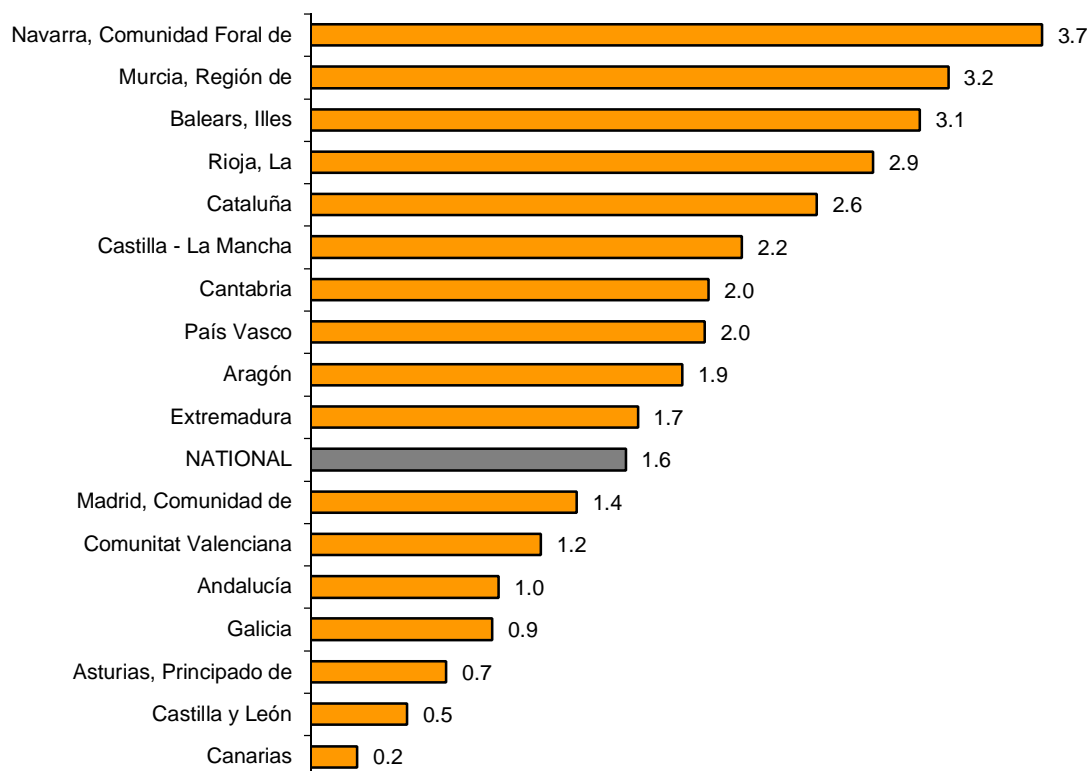
National Indices of employed personnel by sector

	Index	Rate (%)	
		Monthly	Annual
GENERAL INDEX	94.9	-0.1	1.6
1. TRADE	95.0	-0.6	1.1
1.1. Sale and repair of vehicles and motorcycles	88.1	0.1	1.9
1.2. Wholesale trade	97.4	-0.8	1.8
1.3. Retail trade	94.7	-0.5	0.5
2. OTHER SERVICES	94.8	0.2	2.0
2.1. Transport and storage	94.1	-0.1	1.6
2.2. Accommodation	92.1	1.0	0.7
2.3. Information and communications	94.5	0.2	1.6
2.4. Professional, scientific and technical activities	94.8	-0.4	1.0
2.5. Administrative and support service activities	98.5	0.0	5.0

Results by Autonomous Community. Annual variation rates of occupation

All Autonomous Communities registered positive annual rates in employment. Comunidad Foral de Navarra (3.7%) recorded the greatest increase.

General Indices: National and by Autonomous Community Annual rate of employed personnel



Services Sector Activity Indicators. Base 2010 February 2015

Provisional data

1. Turnover indices: General and by sector. Adjusted for seasonal and calendar effects

	Index	Rate (%)		
		Monthly	Annual	Year-to-date average
GENERAL INDEX	94.9	0.0	3.3	3.3
1. TRADE	94.9	0.2	4.1	3.9
1.1. Sale and repair of vehicles and motorcycles	90.2	1.3	17.2	17.9
1.2. Wholesale trade	97.3	0.7	4.4	3.5
1.3. Retail trade	92.2	-0.5	0.6	0.9
2. OTHER SERVICES	94.8	-0.3	1.8	2.2
2.1. Transport and storage	104.4	-0.2	2.9	3.1
2.2. Accommodation	97.8	-0.5	2.2	3.1
2.3. Information and communications	88.1	-0.1	-0.9	-1.0
2.4. Professional, scientific and technical activities	89.5	-0.2	1.7	2.3
2.5. Administrative and support service activities	94.8	-0.8	4.1	4.3

2. Turnover indices: General and by sector. Adjusted for calendar effects

	Index	Rate (%)	
		Annual	Year-to-date average
GENERAL INDEX	86.2	3.3	3.3
1. TRADE	87.1	4.2	3.9
1.1. Sale and repair of vehicles and motorcycles	87.4	17.3	18.0
1.2. Wholesale trade	90.6	4.5	3.5
1.3. Retail trade	80.6	-0.1	0.4
2. OTHER SERVICES	84.4	1.7	2.2
2.1. Transport and storage	96.8	2.7	3.3
2.2. Accommodation	77.6	2.0	3.0
2.3. Information and communications	83.2	-0.8	-0.9
2.4. Professional, scientific and technical activities	80.4	1.7	2.3
2.5. Administrative and support service activities	78.5	4.2	4.5

3. National turnover indices: General and by branch of activity.

Original series

	Index	Rate (%)	
		Annual	Year-to-date average
GENERAL INDEX	85.6	3.5	2.7
1. TRADE	86.4	4.4	3.1
1.1. SALE AND REPAIR OF VEHICLES	86.5	17.3	18.0
- Sale of motor vehicles	87.4	19.3	20.9
- Maintenance and repair of motor vehicles	81.2	6.6	3.4
1.2. WHOLESALE TRADE AND COMMISSION TRADE	90.0	4.8	2.5
- Wholesale on a fee or contract basis	100.8	3.5	2.6
- Wholesale of agricultural raw materials and live animals	95.6	0.2	0.7
- Wholesale of food, beverages and tobacco	87.5	4.4	3.8
- Wholesale of household goods	96.6	5.0	4.2
- Wholesale of information and communication equipment	71.4	8.0	6.7
- Wholesale of other machinery, equipment and supplies	83.1	8.4	6.2
- Other specialised wholesale trade	93.3	4.6	-1.3
- Non-specialised wholesale trade	89.5	5.9	5.5
1.3. RETAIL TRADE	80.0	-0.1	0.4
2. OTHER SERVICES	84.0	1.8	1.9
2.1. TRANSPORTATION AND STORAGE SERVICES	96.3	2.9	2.7
Land transport	93.3	1.9	1.8
- Rail transport	96.7	1.5	3.5
- Taxi operation	87.4	0.3	0.8
- Other passenger land transport	85.3	-2.1	-2.3
- Freight transport by road and removal services	95.1	2.8	2.5
Water transport	68.9	4.1	4.0
Air transport	82.1	5.2	4.0
Warehousing and support activities for transportation	106.0	3.3	3.1
Post and courier activities	90.4	4.3	5.1
2.2. ACCOMMODATION AND FOOD SERVICES ACTIVITIES	77.2	1.9	3.2
Accommodation	71.4	0.2	2.0
Food and beverage service activities	80.2	2.5	3.6
2.3. INFORMATION AND COMMUNICATION	82.7	-0.7	-1.3
Publishing activities	72.7	4.0	0.4
Motion picture, television programme production and music publishing activities	81.3	0.3	-0.9
Programming and broadcasting activities	90.0	6.4	4.9
Telecommunications	70.4	-4.7	-4.9
Computer programming, consultancy and related activities	106.9	1.6	1.5
Information service activities	93.6	-0.8	-1.2
2.4. PROFESSIONAL, SCIENTIFIC AND TECHNICAL ACTIVITIES	80.4	1.7	2.0
Legal, accounting and management consulting activities	90.4	3.9	3.2
Architectural and engineering activities; technical testing and analysis	78.3	-3.6	-2.0
Advertising and market research	70.8	5.0	6.1
Other professional scientific and technical activities	72.0	7.0	1.2
2.5. ADMINISTRATIVE AND SUPPORT SERVICE ACTIVITIES	77.9	4.2	4.2
Employment activities	111.4	22.3	19.4
Travel agencies and tour operator services	57.0	4.1	4.1
Security and investigation activities	92.7	1.7	1.4
Cleaning activities	92.5	1.4	0.8
Office administrative and other business support activities	77.7	1.7	3.6

4. Employed personnel indices: General and by branch of activity

	Index	Rate (%)		
		Monthly	Annual	Year-to-date average
GENERAL INDEX	94.9	-0.1	1.6	1.6
1. TRADE	95.0	-0.6	1.1	1.1
1.1. SALE AND REPAIR OF VEHICLES	88.1	0.1	1.9	1.8
- Sale of motor vehicles	85.5	0.5	2.9	2.5
- Maintenance and repair of motor vehicles	91.1	-0.4	1.0	1.0
1.2. WHOLESALE TRADE AND COMMISSION TRADE	97.4	-0.8	1.8	1.9
- Wholesale on a fee or contract basis	96.8	-2.7	4.3	4.1
- Wholesale of agricultural raw materials and live animals	100.3	0.5	1.5	1.2
- Wholesale of food, beverages and tobacco	105.6	-1.7	1.6	1.7
- Wholesale of household goods	93.2	-0.6	0.3	0.7
- Wholesale of information and communication equipment	98.3	-0.3	2.9	2.7
- Wholesale of other machinery, equipment and supplies	92.9	-0.4	1.4	1.8
- Other specialised wholesale trade	91.7	0.5	3.2	2.9
- Non-specialised wholesale trade	95.0	0.2	3.1	2.8
1.3. RETAIL TRADE	94.7	-0.5	0.5	0.5
2. OTHER SERVICES	94.8	0.2	2.0	1.9
2.1. TRANSPORTATION AND STORAGE SERVICES	94.1	-0.1	1.6	1.5
Land transport	95.8	0.0	2.0	1.9
- Rail transport	95.5	0.0	-3.3	-3.3
- Taxi operation	94.1	0.2	-0.2	-0.2
- Other passenger land transport	95.7	0.3	1.5	1.3
- Freight transport by road and removal services	95.9	0.0	2.9	2.7
Water transport	82.2	0.6	3.1	2.9
Air transport	84.2	-0.6	-2.6	-2.2
Warehousing and support activities for transportation	96.2	-0.4	1.9	2.0
Post and courier activities	84.2	-0.2	-1.1	-1.1
2.2. ACCOMMODATION AND FOOD SERVICES ACTIVITIES	92.1	1.0	0.7	0.5
Accommodation	78.7	3.6	0.4	0.4
Food and beverage service activities	95.9	0.4	0.7	0.5
2.3. INFORMATION AND COMMUNICATION	94.5	0.2	1.6	1.6
Publishing activities	81.8	-0.5	0.4	0.7
Motion picture, television programme production and music publishing activities	73.8	0.5	1.2	1.4
Programming and broadcasting activities	87.8	-0.9	3.3	3.2
Telecommunications	86.9	0.7	-0.6	-0.6
Computer programming, consultancy and related activities	104.8	0.4	2.4	2.4
Information service activities	94.5	-0.6	-0.7	-0.6
2.4. PROFESSIONAL, SCIENTIFIC AND TECHNICAL ACTIVITIES	94.8	-0.4	1.0	1.2
Legal, accounting and management consulting activities	98.7	-0.3	0.7	1.0
Architectural and engineering activities; technical testing and analysis	90.0	0.1	1.2	0.9
Advertising and market research	89.2	-2.1	3.0	3.7
Other professional scientific and technical activities	96.4	-0.7	0.2	0.5
2.5. ADMINISTRATIVE AND SUPPORT SERVICE ACTIVITIES	98.5	0.0	5.0	4.8
Employment activities	119.0	-1.3	18.5	18.0
Travel agencies and tour operator services	89.0	0.2	2.2	2.1
Security and investigation activities	93.0	-0.6	1.7	1.7
Cleaning activities	93.2	0.3	0.8	0.5
Office administrative and other business support activities	100.1	1.1	5.8	6.0

5. Turnover indices: National and by Autonomous Community

	Index	Rate (%)	
		Annual	Year-to-date average
NATIONAL	85.6	3.5	2.7
Andalucía	84.2	3.5	2.1
Aragón	85.8	0.2	-0.5
Asturias, Principado de	79.8	0.5	0.6
Balears, Illes	69.2	2.7	3.4
Canarias	92.4	3.0	1.9
Cantabria	80.1	1.7	0.6
Castilla y León	85.0	2.1	1.5
Castilla-La Mancha	81.2	3.2	2.3
Cataluña	89.1	4.9	5.0
Comunitat Valenciana	88.6	4.8	4.5
Extremadura	76.1	4.3	3.1
Galicia	87.2	1.9	1.9
Madrid, Comunidad de	84.0	3.9	2.2
Murcia, Región de	90.8	3.7	2.7
Navarra, Comunidad Foral de	82.4	2.1	1.3
País Vasco	86.1	0.2	-0.4
Rioja, La	89.1	2.8	3.0

6. Employed personnel indices: National and by Autonomous Community

	Index	Rate (%)		
		Monthly	Annual	Year-to-date average
NATIONAL	94.9	-0.1	1.6	1.6
Andalucía	94.5	-0.1	1.0	1.2
Aragón	92.2	-0.3	1.9	1.8
Asturias, Principado de	90.5	-0.1	0.7	0.5
Balears, Illes	85.4	2.7	3.1	2.6
Canarias	96.9	-0.4	0.2	0.5
Cantabria	94.1	0.8	2.0	1.5
Castilla y León	92.4	-0.4	0.5	0.6
Castilla-La Mancha	94.9	-0.3	2.2	2.5
Cataluña	97.1	0.2	2.6	2.5
Comunitat Valenciana	95.9	-1.2	1.2	1.3
Extremadura	94.5	-0.2	1.7	1.3
Galicia	93.1	-0.1	0.9	0.8
Madrid, Comunidad de	94.0	-0.1	1.4	1.2
Murcia, Región de	99.1	0.4	3.2	3.1
Navarra, Comunidad Foral de	96.1	-0.2	3.7	3.5
País Vasco	97.9	-0.2	2.0	1.9
Rioja, La	97.9	-1.2	2.9	3.0

For further information see **INEbase** - www.ine.es/en/ All press releases at: www.ine.es/en/prensa/prensa_en.htm

Press Office: Telephone numbers: 91 583 93 63 / 94 08 – Fax: 91 583 90 87 - gprensa@ine.es

Information Area: Telephone number: 91 583 91 00 – Fax: 91 583 91 58 – www.ine.es/infoine