

17 July 2014

**Services Sector Activity Indicators (SSAI). Base 2010**  
May 2014. *Provisional data*

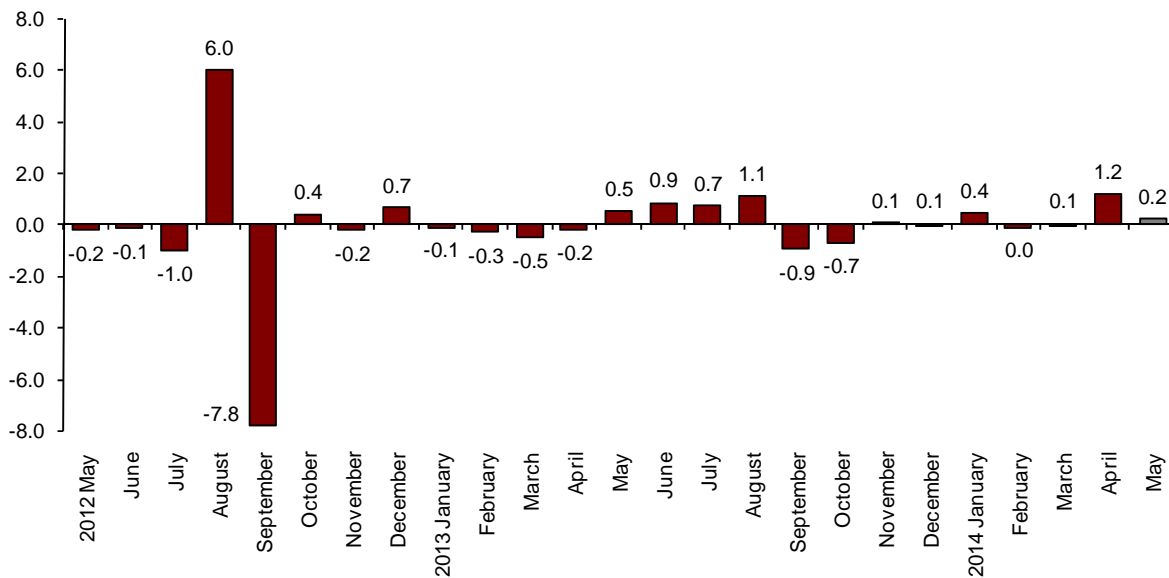
**The monthly variation of turnover for the market Services Sector is 0.2% after adjusting for seasonal and calendar effects**

**The annual rate of turnover stands at 3.2% in the seasonally and calendar adjusted series and at 2.1% in the original series**

**Monthly evolution of the turnover for the market Services Sector**

The monthly variation of the general index of the turnover for the market Services Sector between May and April 2014 was 0.2%, after adjusting for seasonally and calendar effects. This rate was one point below that registered in April.

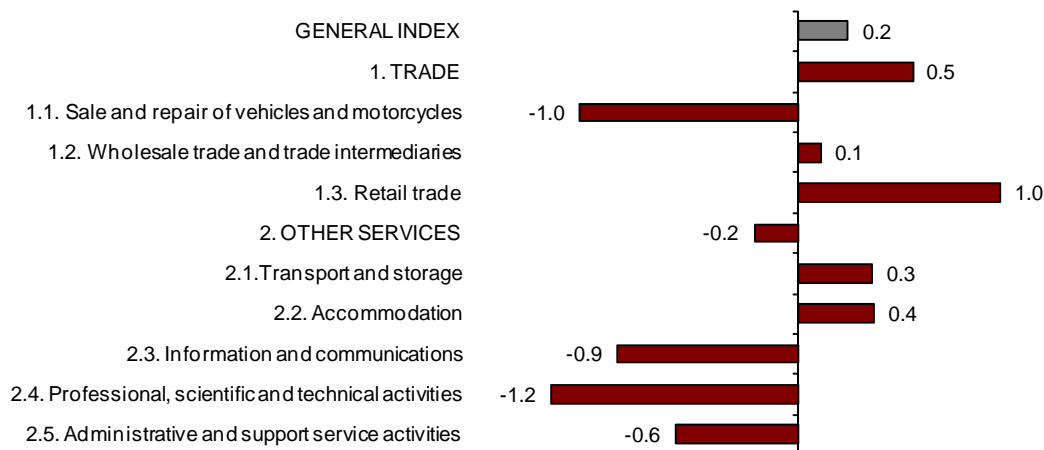
**General index of the turnover for the Market Services Sector  
Adjusted for seasonal and calendar effects. Monthly rate**



After adjusting for seasonal and calendar effects, Trade registered a monthly variation of 0.5% and Other Services registered a variation of -0.2%.

By sectors, *Retail trade* (1.0%) and *Accommodation* (0.4%) registered the greatest increases as compared to April, while *Professional, scientific and technical activities* (-1.2%) and *Sale and repair of motor vehicles and motorcycles* (-1.0%) registered the greatest decreases.

**General and by sectors turnover Index  
Adjusted for seasonal and calendar effects. Monthly rate**



A more detailed analysis showed the activities that registered the highest monthly rates and those that registered the greatest decreases in May.

**Activities with the greatest monthly rates of the Services Sector turnover index  
adjusted for seasonal and calendar effects**

| Activity (CNAE-2009 groups)                           | Monthly rate(%) |
|---|-----------------|
| Employment activities                                 | 4.0             |
| Accommodation   | 1.8             |
| Warehousing and support activities for transportation | 1.4             |

**Activities with the lowest monthly rates of the Services Sector turnover index  
adjusted for seasonal and calendar effects**

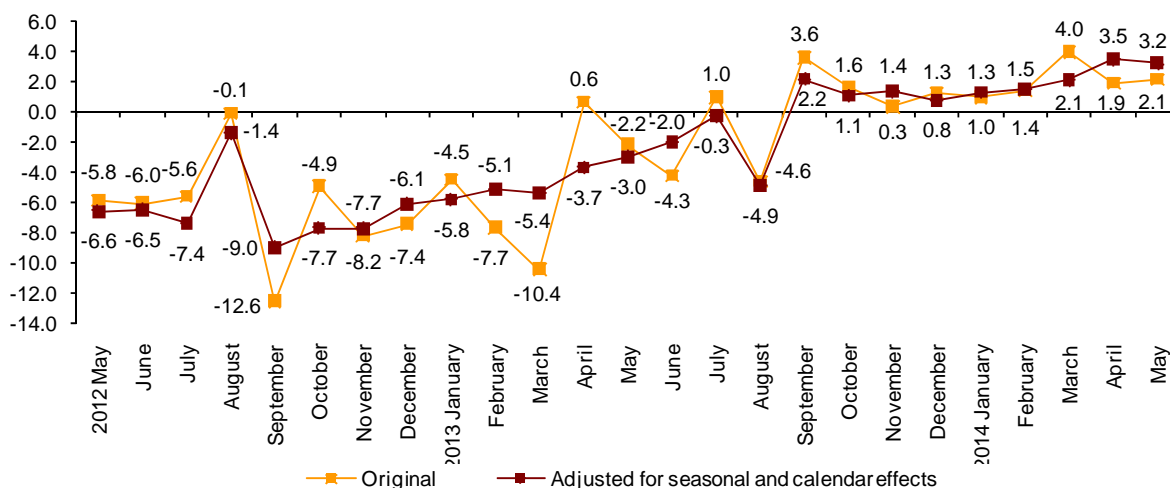
| Activity (CNAE-2009 groups)  | Monthly rate(%) |
|--|-----------------|
| Office administrative and other business support activities              | -4.4            |
| Architectural and engineering activities; technical testing and analysis | -2.8            |
| Advertising and market research  | -2.4            |

**Annual turnover evolution rates for the Market Services sector**

In May, the general Index of the turnover for the Market Services sector, after adjusting for seasonally and calendar effects, registered a variation of 3.2%, as compared with the same month of 2013. This rate was three tenths lower than that registered in April.

The original series registered an annual variation of 2.1%, that is, two tenths over that recorded in April.

**General index of the turnover for the Market Services Sector  
Annual Rate**



After adjusting for seasonal and calendar effects, Trade increased 4.2% and Other services did so by 1.5%, as compared with the same month of the previous year.

All sectors registered positive annual rates, except for *Information and communications* (-2.4%) and *Professional, scientific and technical activities* (-0.5%). *Sale and repair of motor vehicles and motorcycles* recorded the greatest increase (9.7%).

**Annual rates of the Turnover index for the Market Services Sector: General and by sector**

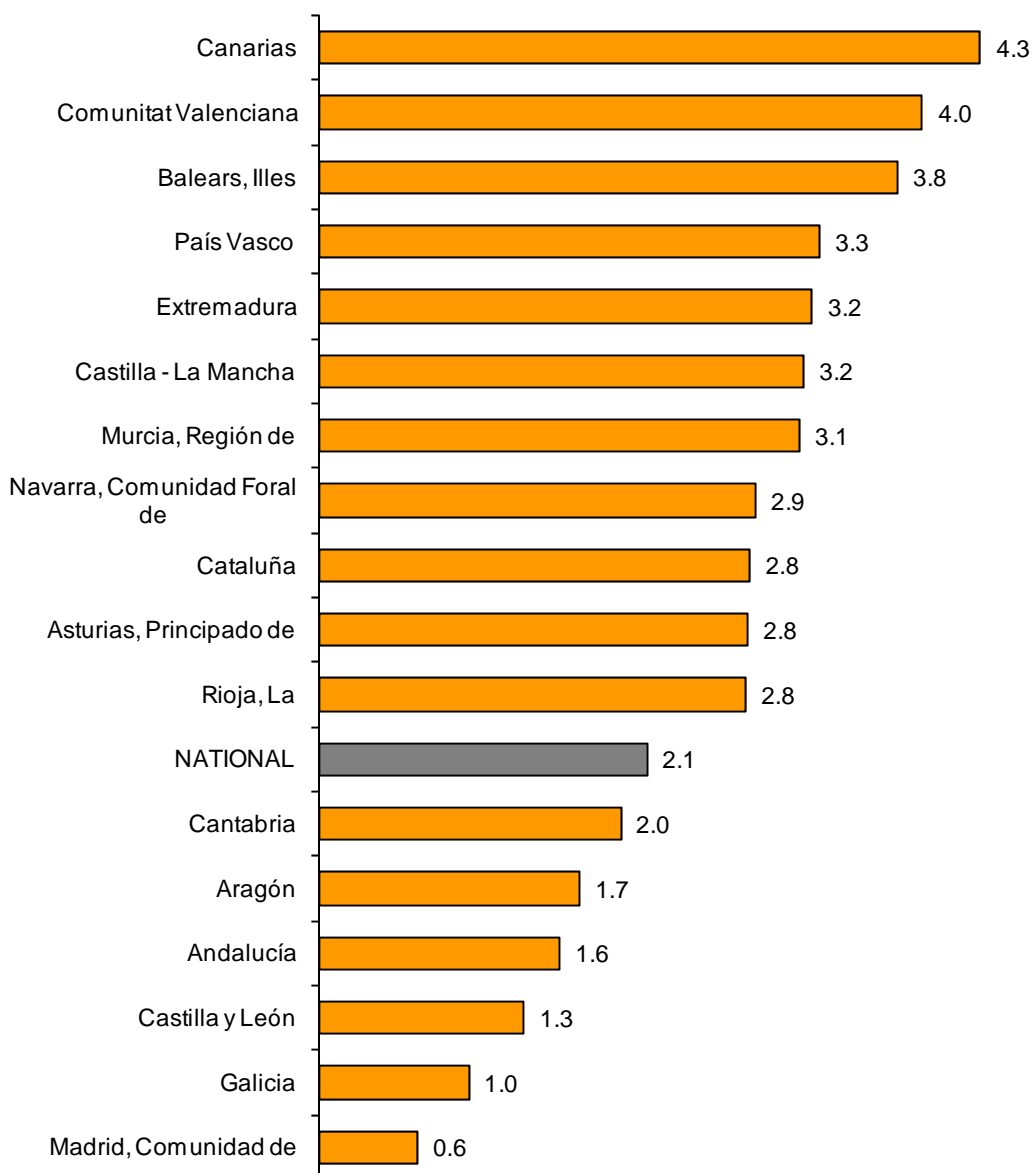
|  | Original index  | Seasonally adjusted index |
|--|-----------------|---------------------------|
|  | Annual rate (%) | Annual rate (%)           |
| <b>GENERAL INDEX</b>                                   | <b>2.1</b>      | <b>3.2</b>                |
| <b>1. TRADE</b>  | <b>2.9</b>      | <b>4.2</b>                |
| 1.1. Sale and repair of vehicles and motorcycles       | 9.7             | 9.7                       |
| 1.2. Wholesale trade                                   | 2.9             | 4.5                       |
| 1.3. Retail trade                                      | 1.2             | 0.9                       |
| <b>2. OTHER SERVICES</b>                               | <b>0.8</b>      | <b>1.5</b>                |
| 2.1. Transport and storage                             | 3.5             | 4.3                       |
| 2.2. Accommodation                                     | 4.5             | 3.9                       |
| 2.3. Information and communications                    | -3.3            | -2.4                      |
| 2.4. Professional, scientific and technical activities | -1.3            | -0.5                      |
| 2.5. Administrative and support service activities     | -0.5            | 0.2                       |

**Results by Autonomous Community. Annual turnover variation rates. Original series.**

In May, all Autonomous Communities registered an increase in their turnover in the Market Service Sector.

The greatest increases were recorded in Canarias (4.3%), Comunitat Valenciana (4.0%) and Illes Balears (3.8%).

**General Indices: National and by Autonomous Community  
Turnover Annual Rate**



## Evolution of employed personnel

Employment in the Market Services Sector experienced an increase of 1.0% in May, as compared with the same month of the previous year. This annual rate was two tenths over that registered in April.

Employment increased 0.2% in the annual rate in Trade and 1.6% in Other services.

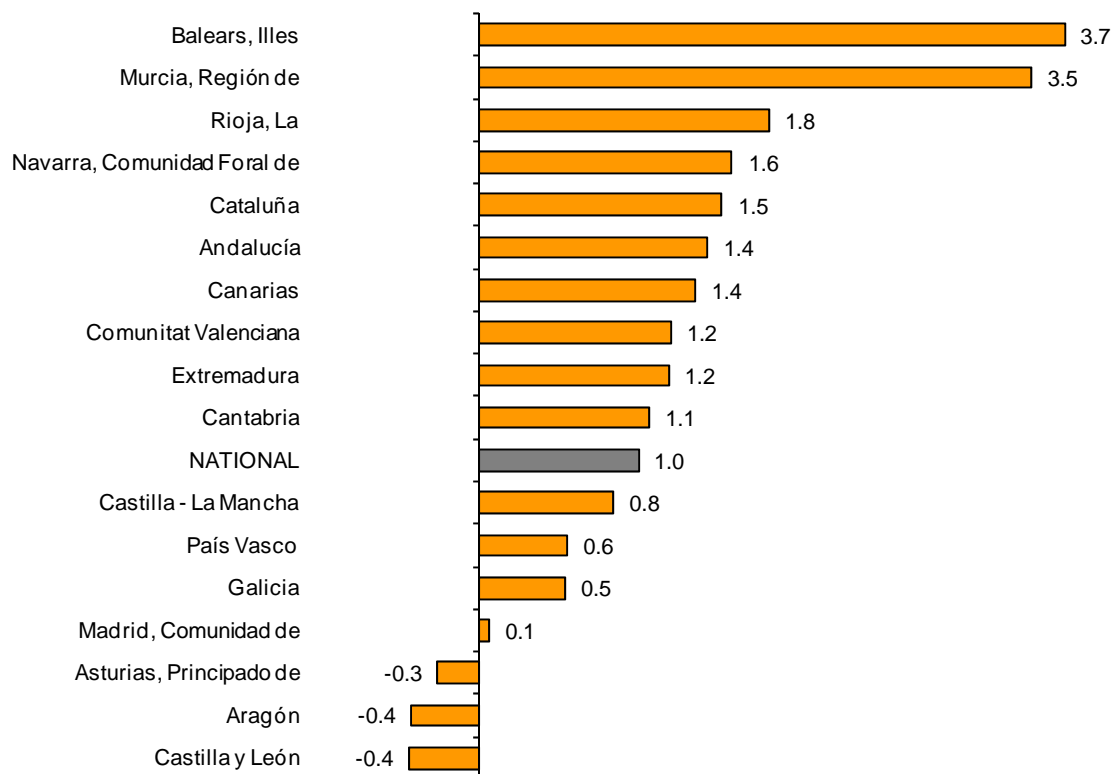
### National Indices of employed personnel by sector

|  | Index       | Rate (%)   |            |
|--|-------------|------------|------------|
|  |             | Monthly    | Annual     |
| <b>GENERAL INDEX</b>                                   | <b>96.3</b> | <b>1.0</b> | <b>1.0</b> |
| 1. TRADE   | 94.7        | 0.2        | 0.2        |
| 1.1. Sale and repair of vehicles and motorcycles       | 86.8        | 0.2        | -1.5       |
| 1.2. Wholesale trade                                   | 96.5        | 0.0        | 1.2        |
| 1.3. Retail trade                                      | 95.0        | 0.3        | -0.1       |
| 2. OTHER SERVICES                                      | 97.4        | 1.6        | 1.6        |
| 2.1. Transport and storage                             | 94.1        | 0.4        | 0.2        |
| 2.2. Accommodation                                     | 101.7       | 3.1        | 2.0        |
| 2.3. Information and communications                    | 93.7        | 0.4        | -0.1       |
| 2.4. Professional, scientific and technical activities | 94.1        | 0.2        | -0.4       |
| 2.5. Administrative and support service activities     | 99.0        | 2.3        | 4.6        |

### Results by Autonomous Community. Annual variation rates of occupation

All Autonomous Communities registered positive annual rates in employment, except for Aragón and Castilla y León (both at -0.4%) and Principado de Asturias (-0.3%).

#### General Indices: National and by Autonomous Community Annual rate of employed personnel



## Services Sector Activity Indicators. Base 2010

May 2014

Provisional data

### 1. Turnover indices: General and by sector. Adjusted for seasonal and calendar effects

|  | Index       | Rate (%)   |            |                      |
|--|-------------|------------|------------|----------------------|
|  |             | Monthly    | Annual     | Year-to-date average |
| <b>GENERAL INDEX</b>                                   | <b>93.1</b> | <b>0.2</b> | <b>3.2</b> | <b>2.3</b>           |
| 1. TRADE   | 93.0        | 0.5        | 4.2        | 2.8                  |
| 1.1. Sale and repair of vehicles and motorcycles       | 78.5        | -1.0       | 9.7        | 10.0                 |
| 1.2. Wholesale trade                                   | 96.1        | 0.1        | 4.5        | 3.2                  |
| 1.3. Retail trade                                      | 92.7        | 1.0        | 0.9        | 0.4                  |
| 2. OTHER SERVICES                                      | 93.7        | -0.2       | 1.5        | 1.4                  |
| 2.1. Transport and storage                             | 102.6       | 0.3        | 4.3        | 3.6                  |
| 2.2. Accommodation                                     | 97.0        | 0.4        | 3.9        | 3.4                  |
| 2.3. Information and communications                    | 87.4        | -0.9       | -2.4       | -1.4                 |
| 2.4. Professional, scientific and technical activities | 88.3        | -1.2       | -0.5       | -0.4                 |
| 2.5. Administrative and support service activities     | 91.4        | -0.6       | 0.2        | 1.1                  |

### 2. Turnover indices: General and by sector. Adjusted for calendar effects

|  | Index       | Rate (%)   |                      |
|--|-------------|------------|----------------------|
|  |             | Annual     | Year-to-date average |
| <b>GENERAL INDEX</b>                                   | <b>95.4</b> | <b>3.5</b> | <b>2.4</b>           |
| 1. TRADE   | 95.1        | 4.5        | 2.9                  |
| 1.1. Sale and repair of vehicles and motorcycles       | 81.9        | 9.4        | 9.8                  |
| 1.2. Wholesale trade                                   | 98.4        | 4.8        | 3.2                  |
| 1.3. Retail trade                                      | 91.8        | 1.0        | 0.4                  |
| 2. OTHER SERVICES                                      | 95.6        | 1.5        | 1.4                  |
| 2.1. Transport and storage                             | 107.2       | 4.8        | 3.9                  |
| 2.2. Accommodation                                     | 101.0       | 4.1        | 3.2                  |
| 2.3. Information and communications                    | 88.7        | -2.4       | -1.2                 |
| 2.4. Professional, scientific and technical activities | 88.5        | -0.6       | -0.6                 |
| 2.5. Administrative and support service activities     | 92.1        | 0.1        | 0.9                  |

## 3. National turnover indices: General and by branch of activity.

### Original series

|   | Index       | Rate (%)   |                      |
|---|-------------|------------|----------------------|
|   |             | Annual     | Year-to-date average |
| <b>GENERAL INDEX</b>  | <b>94.7</b> | <b>2.1</b> | <b>2.1</b>           |
| <b>1. TRADE</b>   | <b>94.3</b> | <b>2.9</b> | <b>2.6</b>           |
| 1.1. SALE AND REPAIR OF VEHICLES  | 82.7        | 9.7        | 9.8                  |
| - Sale of motor vehicles  | 82.5        | 12.3       | 12.4                 |
| - Maintenance and repair of motor vehicles                                      | 83.8        | -2.7       | -2.3                 |
| 1.2. WHOLESALE TRADE AND COMMISSION TRADE                                       | 97.3        | 2.9        | 2.8                  |
| - Wholesale on a fee or contract basis  | 96.6        | 1.4        | 2.4                  |
| - Wholesale of agricultural raw materials and live animals                      | 111.0       | 0.8        | 2.1                  |
| - Wholesale of food, beverages and tobacco                                      | 97.6        | 0.3        | 1.3                  |
| - Wholesale of household goods  | 98.2        | 4.3        | 4.6                  |
| - Wholesale of information and communication equipment                          | 71.7        | 1.6        | 1.8                  |
| - Wholesale of other machinery, equipment and supplies                          | 89.8        | 2.0        | 1.5                  |
| - Other specialised wholesale trade   | 103.9       | 5.2        | 3.3                  |
| - Non-specialised wholesale trade   | 100.0       | 3.9        | 3.0                  |
| 1.3. RETAIL TRADE   | 92.3        | 1.2        | 0.4                  |
| <b>2. OTHER SERVICES</b>  | <b>95.2</b> | <b>0.8</b> | <b>1.2</b>           |
| 2.1. TRANSPORTATION AND STORAGE SERVICES  | 106.5       | 3.5        | 3.6                  |
| Land transport  | 102.0       | 1.6        | 2.7                  |
| - Rail transport  | 109.3       | 3.8        | 6.8                  |
| - Taxi operation  | 104.2       | 1.5        | 2.4                  |
| - Other passenger land transport  | 105.8       | 0.2        | 0.2                  |
| - Freight transport by road and removal services                                | 100.4       | 1.7        | 2.8                  |
| Water transport   | 77.2        | 3.6        | -0.3                 |
| Air transport   | 106.8       | 5.3        | 6.1                  |
| Warehousing and support activities for transportation                           | 116.2       | 5.7        | 4.8                  |
| Post and courier activities   | 89.7        | -1.6       | -1.8                 |
| 2.2. ACCOMMODATION AND FOOD SERVICES ACTIVITIES                                 | 101.3       | 4.5        | 3.3                  |
| Accommodation   | 111.9       | 4.6        | 5.6                  |
| Food and beverage service activities  | 97.9        | 4.5        | 2.4                  |
| 2.3. INFORMATION AND COMMUNICATION  | 88.2        | -3.3       | -1.4                 |
| Publishing activities   | 83.7        | -0.1       | -1.3                 |
| Motion picture, television programme production and music publishing activities | 96.6        | 9.3        | 6.2                  |
| Programming and broadcasting activities   | 98.2        | 0.8        | 3.0                  |
| Telecommunications  | 73.9        | -10.8      | -6.6                 |
| Computer programming, consultancy and related activities                        | 111.2       | 2.5        | 3.2                  |
| Information service activities  | 92.5        | -2.1       | 0.6                  |
| 2.4. PROFESSIONAL, SCIENTIFIC AND TECHNICAL ACTIVITIES                          | 88.0        | -1.3       | -0.8                 |
| Legal, accounting and management consulting activities                          | 93.3        | 2.0        | 0.7                  |
| Architectural and engineering activities; technical testing and analysis        | 82.0        | -6.6       | -2.0                 |
| Advertising and market research   | 89.4        | -0.1       | -1.7                 |
| Other professional scientific and technical activities                          | 84.7        | 3.9        | -0.8                 |
| 2.5. ADMINISTRATIVE AND SUPPORT SERVICE ACTIVITIES                              | 91.8        | -0.5       | 0.8                  |
| Employment activities   | 112.9       | 19.2       | 14.6                 |
| Travel agencies and tour operator services                                      | 88.3        | -3.5       | 2.0                  |
| Security and investigation activities   | 99.1        | 4.1        | 1.2                  |
| Cleaning activities   | 94.6        | -0.9       | -0.8                 |
| Office administrative and other business support activities                     | 78.5        | -4.6       | -4.5                 |

## 4. Employed personnel indices: General and by branch of activity

|   | Index       | Rate (%)   |            |                      |
|---|-------------|------------|------------|----------------------|
|   |             | Monthly    | Annual     | Year-to-date average |
| <b>GENERAL INDEX</b>  | <b>96.3</b> | <b>1.0</b> | <b>1.0</b> | <b>0.1</b>           |
| <b>1. TRADE</b>   | <b>94.7</b> | <b>0.2</b> | <b>0.2</b> | <b>-0.6</b>          |
| 1.1. SALE AND REPAIR OF VEHICLES  | 86.8        | 0.2        | -1.5       | -2.2                 |
| - Sale of motor vehicles  | 83.8        | 0.3        | -1.7       | -2.7                 |
| - Maintenance and repair of motor vehicles                                      | 90.3        | 0.1        | -1.4       | -1.7                 |
| 1.2. WHOLESALE TRADE AND COMMISSION TRADE                                       | 96.5        | 0.0        | 1.2        | -0.2                 |
| - Wholesale on a fee or contract basis  | 97.3        | -0.5       | -0.1       | 0.0                  |
| - Wholesale of agricultural raw materials and live animals                      | 100.1       | -1.4       | 2.6        | 2.0                  |
| - Wholesale of food, beverages and tobacco                                      | 103.2       | -0.5       | 3.5        | 1.0                  |
| - Wholesale of household goods  | 93.1        | 0.4        | -1.3       | -2.1                 |
| - Wholesale of information and communication equipment                          | 95.8        | -0.4       | 1.0        | 0.2                  |
| - Wholesale of other machinery, equipment and supplies                          | 93.0        | 0.3        | 1.2        | 0.5                  |
| - Other specialised wholesale trade   | 91.0        | 0.8        | 0.5        | -1.1                 |
| - Non-specialised wholesale trade   | 89.8        | -0.2       | -2.9       | -3.4                 |
| 1.3. RETAIL TRADE   | 95.0        | 0.3        | -0.1       | -0.6                 |
| <b>2. OTHER SERVICES</b>  | <b>97.4</b> | <b>1.6</b> | <b>1.6</b> | <b>0.7</b>           |
| 2.1. TRANSPORTATION AND STORAGE SERVICES  | 94.1        | 0.4        | 0.2        | -0.2                 |
| Land transport  | 95.2        | 0.4        | 0.7        | 0.5                  |
| - Rail transport  | 97.7        | -0.3       | -1.2       | -0.8                 |
| - Taxi operation  | 96.3        | 1.0        | -2.5       | -1.9                 |
| - Other passenger land transport  | 97.8        | 1.4        | -1.2       | -2.1                 |
| - Freight transport by road and removal services                                | 94.0        | 0.1        | 2.0        | 1.7                  |
| Water transport   | 89.5        | 5.7        | -1.4       | -1.0                 |
| Air transport   | 91.4        | 2.3        | -1.1       | -5.0                 |
| Warehousing and support activities for transportation                           | 96.0        | 0.2        | 0.0        | -0.6                 |
| Post and courier activities   | 85.1        | 0.2        | -2.2       | -2.0                 |
| 2.2. ACCOMMODATION AND FOOD SERVICES ACTIVITIES                                 | 101.7       | 3.1        | 2.0        | 1.2                  |
| Accommodation   | 104.5       | 9.5        | 3.7        | 2.6                  |
| Food and beverage service activities  | 101.2       | 1.4        | 1.6        | 0.9                  |
| 2.3. INFORMATION AND COMMUNICATION  | 93.7        | 0.4        | -0.1       | -1.0                 |
| Publishing activities   | 81.9        | 0.6        | -2.0       | -3.2                 |
| Motion picture, television programme production and music publishing activities | 74.3        | -0.6       | -5.0       | -6.7                 |
| Programming and broadcasting activities   | 86.4        | 1.3        | -2.9       | -3.0                 |
| Telecommunications  | 87.3        | 0.1        | -1.0       | -2.7                 |
| Computer programming, consultancy and related activities                        | 103.1       | 0.4        | 1.5        | 0.8                  |
| Information service activities  | 95.9        | 0.0        | -0.2       | -1.6                 |
| 2.4. PROFESSIONAL, SCIENTIFIC AND TECHNICAL ACTIVITIES                          | 94.1        | 0.2        | -0.4       | -0.5                 |
| Legal, accounting and management consulting activities                          | 98.1        | 0.2        | 0.3        | 0.0                  |
| Architectural and engineering activities; technical testing and analysis        | 88.5        | -0.2       | -1.3       | -1.4                 |
| Advertising and market research   | 89.9        | 1.6        | -2.6       | -3.0                 |
| Other professional scientific and technical activities                          | 96.7        | 0.1        | 1.2        | 1.8                  |
| 2.5. ADMINISTRATIVE AND SUPPORT SERVICE ACTIVITIES                              | 99.0        | 2.3        | 4.6        | 2.7                  |
| Employment activities   | 119.1       | 7.1        | 24.6       | 18.5                 |
| Travel agencies and tour operator services                                      | 90.4        | 1.7        | 1.5        | 1.0                  |
| Security and investigation activities   | 92.7        | 0.6        | 0.3        | -0.3                 |
| Cleaning activities   | 94.3        | 1.0        | -0.2       | -1.0                 |
| Office administrative and other business support activities                     | 99.6        | 2.1        | 3.1        | 1.5                  |



## 5. Turnover indices: National and by Autonomous Community

|                             | Index       | Rate (%)   |                      |
|-----------------------------|-------------|------------|----------------------|
|                             |             | Annual     | Year-to-date average |
| <b>NATIONAL</b>             | <b>94.7</b> | <b>2.1</b> | <b>2.1</b>           |
| Andalucía                   | 94.0        | 1.6        | 2.3                  |
| Aragón                      | 96.5        | 1.7        | 1.8                  |
| Asturias, Principado de     | 90.1        | 2.8        | 2.0                  |
| Balears, Illes              | 108.9       | 3.8        | 4.5                  |
| Canarias                    | 93.3        | 4.3        | 4.5                  |
| Cantabria                   | 89.0        | 2.0        | -0.4                 |
| Castilla y León             | 96.8        | 1.3        | 0.6                  |
| Castilla-La Mancha          | 90.7        | 3.2        | 1.3                  |
| Cataluña                    | 96.6        | 2.8        | 2.5                  |
| Comunitat Valenciana        | 98.3        | 4.0        | 2.5                  |
| Extremadura                 | 87.2        | 3.2        | 1.5                  |
| Galicia                     | 93.1        | 1.0        | 1.9                  |
| Madrid, Comunidad de        | 91.9        | 0.6        | 1.0                  |
| Murcia, Región de           | 103.0       | 3.1        | 3.7                  |
| Navarra, Comunidad Foral de | 92.8        | 2.9        | 3.3                  |
| País Vasco                  | 93.5        | 3.3        | 3.8                  |
| Rioja, La                   | 98.5        | 2.8        | 3.2                  |

## 6. Employed personnel indices: National and by Autonomous Community

|                             | Index       | Rate (%)   |            |                      |
|-----------------------------|-------------|------------|------------|----------------------|
|                             |             | Monthly    | Annual     | Year-to-date average |
| <b>NATIONAL</b>             | <b>96.3</b> | <b>1.0</b> | <b>1.0</b> | <b>0.1</b>           |
| Andalucía                   | 96.8        | 0.7        | 1.4        | 0.3                  |
| Aragón                      | 92.9        | 0.9        | -0.4       | -1.2                 |
| Asturias, Principado de     | 91.5        | 0.6        | -0.3       | -1.4                 |
| Balears, Illes              | 112.0       | 13.5       | 3.7        | 1.7                  |
| Canarias                    | 96.8        | -0.2       | 1.4        | 1.0                  |
| Cantabria                   | 95.2        | 0.2        | 1.1        | 0.3                  |
| Castilla y León             | 93.7        | 0.3        | -0.4       | -1.1                 |
| Castilla-La Mancha          | 95.1        | 0.8        | 0.8        | 0.5                  |
| Cataluña                    | 97.6        | 0.9        | 1.5        | 0.8                  |
| Comunitat Valenciana        | 96.1        | 0.8        | 1.2        | 0.1                  |
| Extremadura                 | 95.2        | 0.1        | 1.2        | 0.4                  |
| Galicia                     | 93.9        | 0.5        | 0.5        | -0.5                 |
| Madrid, Comunidad de        | 94.3        | 0.5        | 0.1        | -0.4                 |
| Murcia, Región de           | 100.9       | 1.6        | 3.5        | 1.7                  |
| Navarra, Comunidad Foral de | 97.2        | 1.8        | 1.6        | 0.8                  |
| País Vasco                  | 97.8        | 0.9        | 0.6        | -0.1                 |
| Rioja, La                   | 97.5        | 0.6        | 1.8        | 0.8                  |