

18 September 2014

Services Sector Activity Indicators (SSAI). Base 2010
July 2014. *Provisional data*

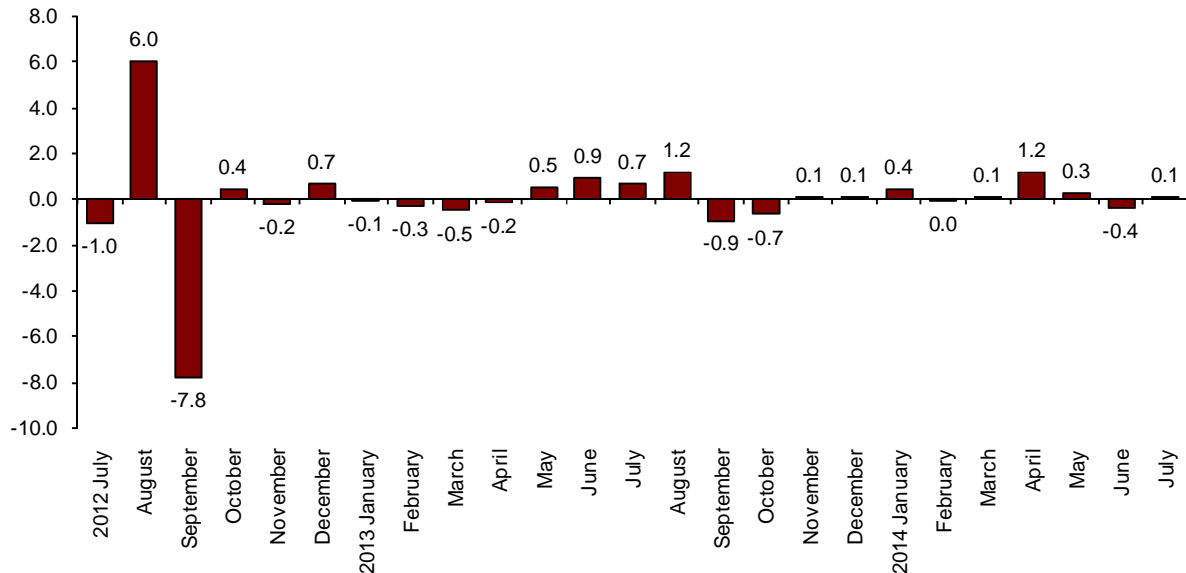
The monthly variation of turnover for the market Services Sector is 0.1% after adjusting for seasonal and calendar effects

The annual rate of turnover stands at 1.3% in the seasonally and calendar adjusted series and at 2.3% in the original series

Monthly evolution of the turnover for the market Services Sector

The monthly variation of the general index of the turnover for the market Services Sector between July and June 2014 was 0.1%, after adjusting for seasonally and calendar effects. This rate was five tenths higher than that registered in June.

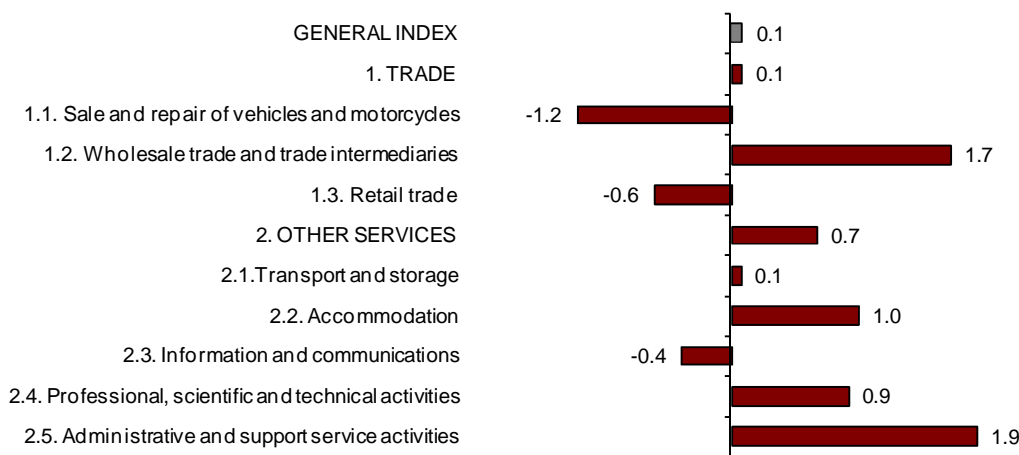
**General index of the turnover for the Market Services Sector
Adjusted for seasonal and calendar effects. Monthly rate**



Trade registered a monthly variation of 0.1% and the variation of Other services was 0.7%, after adjusting for seasonal and calendar effects.

All sectors registered positive monthly rates, except for *Sale and repair of motor vehicles and motorcycles* (-1.2%), *Retail trade* (-0.6%) and *Information and communications* (-0.4%). The greatest increases were recorded in *Administrative and support service activities* (1.9%) and *Wholesale trade and trade intermediaries* (1.7%).

**General and by sectors turnover Index
Adjusted for seasonal and calendar effects. Monthly rate**



A more detailed analysis showed the activities that registered the highest monthly rates and those that registered the greatest decreases in July.

**Activities with the greatest monthly rates of the Services Sector turnover index
adjusted for seasonal and calendar effects**

Activity (CNAE-2009 groups)	Monthly rate(%)
Office administrative and other business support activities	3.0
Programming and broadcasting activities	2.3
Employment activities	2.0

**Activities with the lowest monthly rates of the Services Sector turnover index
adjusted for seasonal and calendar effects**

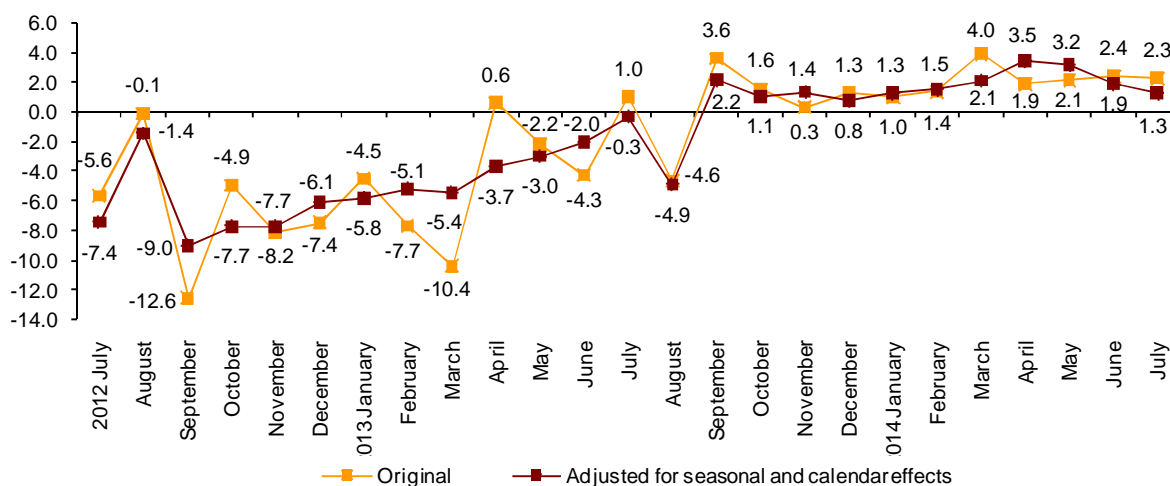
Activity (CNAE-2009 groups)	Monthly rate(%)
Telecommunications	-2.4
Motion picture, television programme production and music publishing activities	-1.2
Sale and repair of vehicles	-1.2

Annual turnover evolution rates for the Market Services sector

In July, the general Index of the turnover for the Market Services sector, after adjusting for seasonally and calendar effects, registered a variation of 1.3%, as compared with the same month of 2013. This rate was six tenths below that registered in June.

The original series registered an annual variation of 2.3%, that is, one tenth below that recorded in June.

**General index of the turnover for the Market Services Sector
Annual Rate**



After adjusting for seasonal and calendar effects, Trade increased by 1.4% and Other services did so by 1.6%, as compared with the same month of the previous year.

All sectors registered positive annual rates, except for *Professional, scientific and technical activities* (-2.0%) and *Retail trade* (-1.0%). *Sale and repair of motor vehicles and motorcycles* recorded the greatest increase (7.9%).

Annual rates of the Turnover index for the Market Services Sector: General and by sector

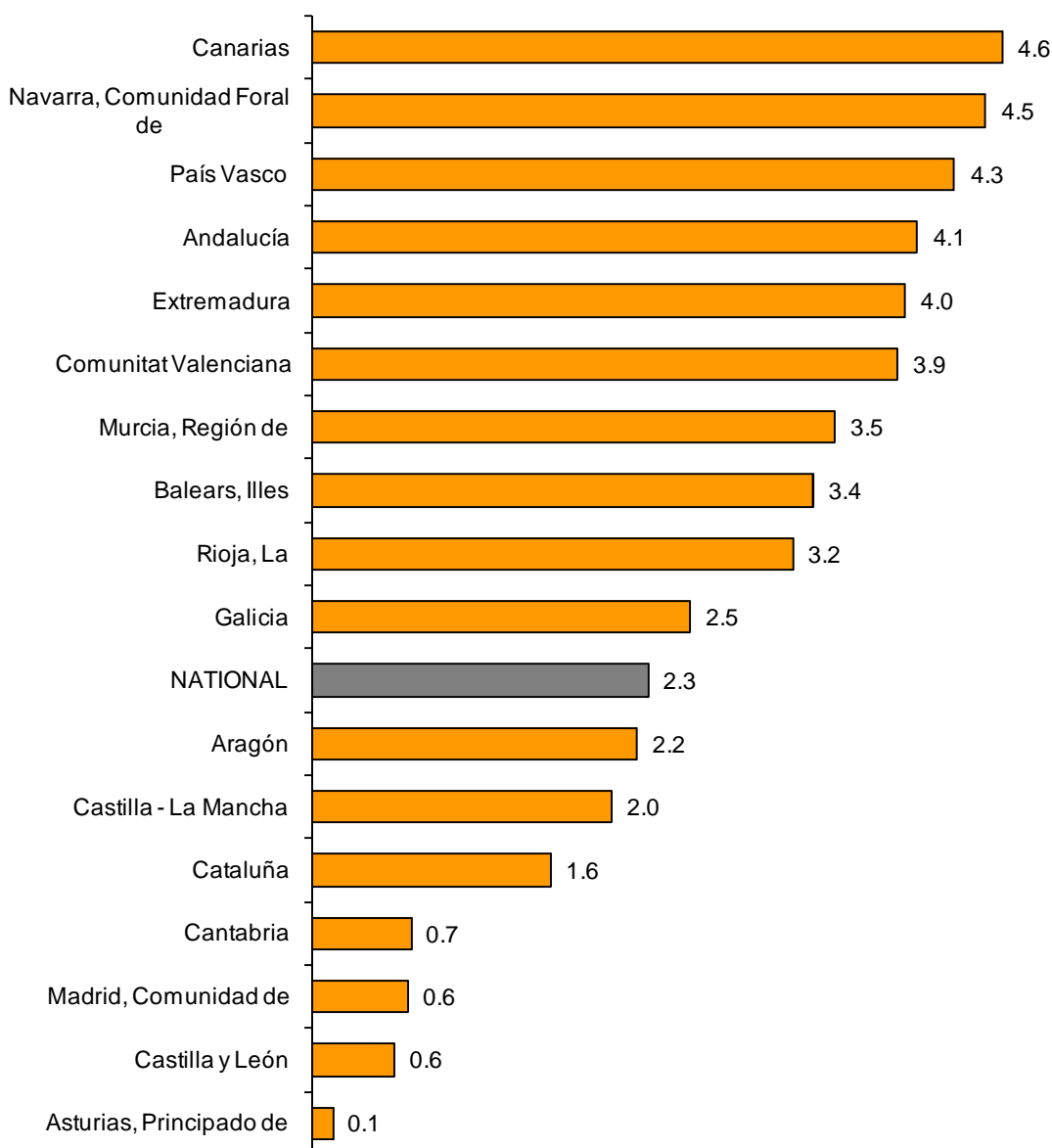
	Original index	Seasonally adjusted index
	Annual rate (%)	Annual rate (%)
GENERAL INDEX	2.3	1.3
1. TRADE	2.5	1.4
1.1. Sale and repair of vehicles and motorcycles	7.9	7.9
1.2. Wholesale trade	3.7	3.1
1.3. Retail trade	-0.8	-1.0
2. OTHER SERVICES	1.8	1.6
2.1. Transport and storage	3.7	3.5
2.2. Accommodation	3.8	4.2
2.3. Information and communications	0.0	0.1
2.4. Professional, scientific and technical activities	-1.4	-2.0
2.5. Administrative and support service activities	2.2	2.1

Results by Autonomous Community. Annual turnover variation rates. Original series.

In July, all Autonomous Communities registered an increase in their turnover in the Market Service Sector.

The greatest increases were recorded in Canarias (4.6%), Comunidad Foral de Navarra (4.5%) and País Vasco (4.3%).

**General Indices: National and by Autonomous Community
Turnover Annual Rate**



Evolution of employed personnel

Employment in the Market Services Sector experienced an increase of 1.8% in July, as compared with the same month of the previous year. This annual rate was two tenths over that registered in June.

Employment increased 0.8% in the annual rate in Trade and 2.4% in Other services.

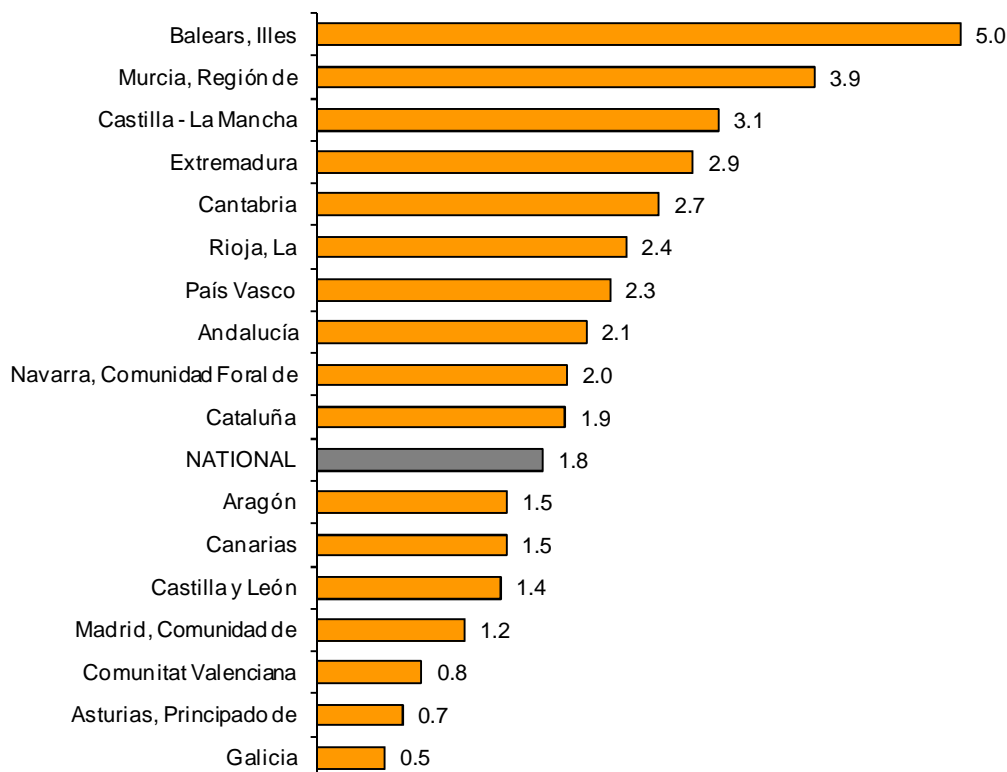
National Indices of employed personnel by sector

	Index	Rate (%)	
		Monthly	Annual
GENERAL INDEX	97.6	0.4	1.8
1. TRADE	95.8	0.4	0.8
1.1. Sale and repair of vehicles and motorcycles	88.3	1.1	0.0
1.2. Wholesale trade	96.0	-0.3	1.9
1.3. Retail trade	97.0	0.8	0.3
2. OTHER SERVICES	98.8	0.4	2.4
2.1. Transport and storage	95.8	0.5	1.1
2.2. Accommodation	103.9	0.7	3.1
2.3. Information and communications	93.7	-0.4	0.4
2.4. Professional, scientific and technical activities	95.4	0.1	0.8
2.5. Administrative and support service activities	99.9	0.5	5.2

Results by Autonomous Community. Annual variation rates of occupation

All Autonomous Communities registered positive annual rates in employment. Illes Balears (5.0%) and Región de Murcia (3.9%) registered the greatest increases.

General Indices: National and by Autonomous Community Annual rate of employed personnel



Services Sector Activity Indicators. Base 2010

July 2014

Provisional data

1. Turnover indices: General and by sector. Adjusted for seasonal and calendar effects

	Index	Rate (%)		
		Monthly	Annual	Year-to-date average
GENERAL INDEX	92.8	0.1	1.3	2.1
1. TRADE	92.6	0.1	1.4	2.5
1.1. Sale and repair of vehicles and motorcycles	79.0	-1.2	7.9	9.9
1.2. Wholesale trade	95.9	1.7	3.1	3.0
1.3. Retail trade	91.4	-0.6	-1.0	0.2
2. OTHER SERVICES	94.0	0.7	1.6	1.4
2.1. Transport and storage	102.2	0.1	3.5	3.5
2.2. Accommodation	98.1	1.0	4.2	3.6
2.3. Information and communications	87.8	-0.4	0.1	-0.9
2.4. Professional, scientific and technical activities	88.5	0.9	-2.0	-0.6
2.5. Administrative and support service activities	92.4	1.9	2.1	0.8

2. Turnover indices: General and by sector. Adjusted for calendar effects

	Index	Rate (%)	
		Annual	Year-to-date average
GENERAL INDEX	100.8	2.2	2.2
1. TRADE	98.5	2.4	2.6
1.1. Sale and repair of vehicles and motorcycles	89.0	7.6	9.8
1.2. Wholesale trade	99.9	3.6	3.0
1.3. Retail trade	98.8	-1.0	0.2
2. OTHER SERVICES	104.9	1.8	1.4
2.1. Transport and storage	110.9	3.6	3.7
2.2. Accommodation	122.6	3.8	3.3
2.3. Information and communications	87.8	0.0	-0.8
2.4. Professional, scientific and technical activities	96.9	-1.5	-0.7
2.5. Administrative and support service activities	117.8	2.2	0.6

3. National turnover indices: General and by branch of activity.

Original series

	Index	Rate (%)	
		Annual	Year-to-date average
GENERAL INDEX	102.1	2.3	2.2
1. TRADE	100.1	2.5	2.6
1.1. SALE AND REPAIR OF VEHICLES	90.9	7.9	9.7
- Sale of motor vehicles	90.4	9.3	12.0
- Maintenance and repair of motor vehicles	93.7	0.7	-1.5
1.2. WHOLESALE TRADE AND COMMISSION TRADE	101.7	3.7	3.0
- Wholesale on a fee or contract basis	98.8	1.8	1.9
- Wholesale of agricultural raw materials and live animals	103.6	4.3	2.4
- Wholesale of food, beverages and tobacco	97.4	0.7	0.9
- Wholesale of household goods	107.5	6.2	5.0
- Wholesale of information and communication equipment	79.8	2.1	2.0
- Wholesale of other machinery, equipment and supplies	90.9	2.4	1.5
- Other specialised wholesale trade	110.7	5.0	4.0
- Non-specialised wholesale trade	100.4	1.4	2.5
1.3. RETAIL TRADE	99.8	-0.8	0.1
2. OTHER SERVICES	105.6	1.8	1.4
2.1. TRANSPORTATION AND STORAGE SERVICES	112.3	3.7	3.6
Land transport	102.2	3.3	2.8
- Rail transport	106.7	5.4	6.3
- Taxi operation	110.1	0.4	1.8
- Other passenger land transport	90.6	1.1	0.5
- Freight transport by road and removal services	103.8	3.7	3.0
Water transport	92.3	2.2	0.8
Air transport	134.0	5.1	5.6
Warehousing and support activities for transportation	124.0	3.9	4.6
Post and courier activities	91.7	3.9	-0.3
2.2. ACCOMMODATION AND FOOD SERVICES ACTIVITIES	122.2	3.8	3.3
Accommodation	167.8	3.3	4.5
Food and beverage service activities	104.8	4.1	2.7
2.3. INFORMATION AND COMMUNICATION	88.6	0.0	-0.8
Publishing activities	104.2	4.9	0.3
Motion picture, television programme production and music publishing activities	69.9	2.0	5.7
Programming and broadcasting activities	82.0	11.0	4.5
Telecommunications	74.9	-7.3	-6.6
Computer programming, consultancy and related activities	112.6	6.3	4.2
Information service activities	98.2	0.0	1.2
2.4. PROFESSIONAL, SCIENTIFIC AND TECHNICAL ACTIVITIES	97.5	-1.4	-0.8
Legal, accounting and management consulting activities	114.5	-0.2	0.8
Architectural and engineering activities; technical testing and analysis	87.5	-5.4	-3.3
Advertising and market research	86.6	2.6	0.1
Other professional scientific and technical activities	97.4	-2.2	-0.9
2.5. ADMINISTRATIVE AND SUPPORT SERVICE ACTIVITIES	118.5	2.2	0.6
Employment activities	133.9	20.4	16.4
Travel agencies and tour operator services	148.6	1.3	0.5
Security and investigation activities	101.2	4.3	1.9
Cleaning activities	95.2	-0.8	-1.1
Office administrative and other business support activities	81.7	-1.2	-4.1

4. Employed personnel indices: General and by branch of activity

	Index	Rate (%)		
		Monthly	Annual	Year-to-date average
GENERAL INDEX	97.6	0.4	1.8	0.6
1. TRADE	95.8	0.4	0.8	-0.2
1.1. SALE AND REPAIR OF VEHICLES	88.3	1.1	0.0	-1.7
- Sale of motor vehicles	85.9	1.6	0.9	-1.9
- Maintenance and repair of motor vehicles	91.1	0.6	-0.9	-1.5
1.2. WHOLESALE TRADE AND COMMISSION TRADE	96.0	-0.3	1.9	0.4
- Wholesale on a fee or contract basis	97.3	0.7	1.4	0.3
- Wholesale of agricultural raw materials and live animals	103.5	1.1	2.7	2.1
- Wholesale of food, beverages and tobacco	98.0	-2.9	3.0	1.7
- Wholesale of household goods	95.3	0.6	0.9	-1.3
- Wholesale of information and communication equipment	97.4	0.8	1.8	0.5
- Wholesale of other machinery, equipment and supplies	94.7	1.1	1.8	0.7
- Other specialised wholesale trade	92.1	0.8	1.3	-0.4
- Non-specialised wholesale trade	92.8	1.8	-0.7	-2.8
1.3. RETAIL TRADE	97.0	0.8	0.3	-0.3
2. OTHER SERVICES	98.8	0.4	2.4	1.2
2.1. TRANSPORTATION AND STORAGE SERVICES	95.8	0.5	1.1	0.1
Land transport	96.3	0.2	1.8	0.8
- Rail transport	98.2	0.7	-0.8	-0.9
- Taxi operation	97.7	0.5	-2.2	-2.0
- Other passenger land transport	94.8	-3.7	0.3	-1.5
- Freight transport by road and removal services	96.2	1.2	3.1	2.0
Water transport	103.1	6.0	0.8	-0.9
Air transport	94.0	1.0	-0.9	-3.9
Warehousing and support activities for transportation	98.3	0.4	0.6	-0.2
Post and courier activities	87.4	2.2	-2.0	-1.9
2.2. ACCOMMODATION AND FOOD SERVICES ACTIVITIES	103.9	0.7	3.1	1.8
Accommodation	116.9	4.3	4.9	3.4
Food and beverage service activities	100.7	-0.4	2.5	1.4
2.3. INFORMATION AND COMMUNICATION	93.7	-0.4	0.4	-0.6
Publishing activities	81.9	-0.3	-1.5	-2.7
Motion picture, television programme production and music publishing activities	73.7	-2.9	-1.7	-5.5
Programming and broadcasting activities	87.6	0.4	-3.4	-3.0
Telecommunications	86.9	-0.3	-0.9	-2.2
Computer programming, consultancy and related activities	103.1	-0.3	1.9	1.2
Information service activities	95.7	0.2	0.3	-1.1
2.4. PROFESSIONAL, SCIENTIFIC AND TECHNICAL ACTIVITIES	95.4	0.1	0.8	-0.2
Legal, accounting and management consulting activities	98.9	-0.1	1.1	0.3
Architectural and engineering activities; technical testing and analysis	90.7	0.7	-0.2	-1.2
Advertising and market research	91.1	-1.1	1.4	-2.0
Other professional scientific and technical activities	97.6	0.4	2.0	1.9
2.5. ADMINISTRATIVE AND SUPPORT SERVICE ACTIVITIES	99.9	0.5	5.2	3.4
Employment activities	122.0	3.0	24.9	20.2
Travel agencies and tour operator services	95.6	4.7	3.4	1.4
Security and investigation activities	93.4	1.0	1.3	0.0
Cleaning activities	94.8	0.4	-0.1	-0.8
Office administrative and other business support activities	98.2	-3.2	3.7	2.1

5. Turnover indices: National and by Autonomous Community

	Index	Rate (%)	
		Annual	Year-to-date average
NATIONAL	102.1	2.3	2.2
Andalucía	97.8	4.1	2.6
Aragón	107.0	2.2	2.3
Asturias, Principado de	96.7	0.1	1.5
Balears, Illes	151.7	3.4	4.1
Canarias	109.9	4.6	4.5
Cantabria	98.9	0.7	0.2
Castilla y León	103.0	0.6	0.7
Castilla-La Mancha	96.7	2.0	1.3
Cataluña	106.4	1.6	2.4
Comunitat Valenciana	104.1	3.9	2.6
Extremadura	98.3	4.0	2.1
Galicia	102.2	2.5	1.8
Madrid, Comunidad de	95.9	0.6	1.0
Murcia, Región de	107.5	3.5	3.8
Navarra, Comunidad Foral de	95.0	4.5	3.6
País Vasco	98.2	4.3	4.0
Rioja, La	109.1	3.2	3.1

6. Employed personnel indices: National and by Autonomous Community

	Index	Rate (%)		
		Monthly	Annual	Year-to-date average
NATIONAL	97.6	0.4	1.8	0.6
Andalucía	96.9	-0.6	2.1	0.8
Aragón	95.0	1.1	1.5	-0.5
Asturias, Principado de	93.4	0.8	0.7	-0.9
Balears, Illes	121.0	1.9	5.0	2.9
Canarias	97.5	0.3	1.5	1.1
Cantabria	100.2	2.4	2.7	1.0
Castilla y León	95.0	0.5	1.4	-0.5
Castilla-La Mancha	98.0	1.4	3.1	1.1
Cataluña	100.4	1.0	1.9	1.2
Comunitat Valenciana	94.5	0.0	0.8	0.2
Extremadura	100.1	1.2	2.9	1.2
Galicia	95.2	0.7	0.5	-0.2
Madrid, Comunidad de	95.0	0.0	1.2	-0.1
Murcia, Región de	99.7	-1.4	3.9	2.4
Navarra, Comunidad Foral de	99.3	1.0	2.0	1.3
País Vasco	99.0	1.1	2.3	0.4
Rioja, La	98.1	0.5	2.4	1.2