

18 September 2015

Services Sector Activity Indicators (SSAI). Base 2010
July 2015. *Provisional data*

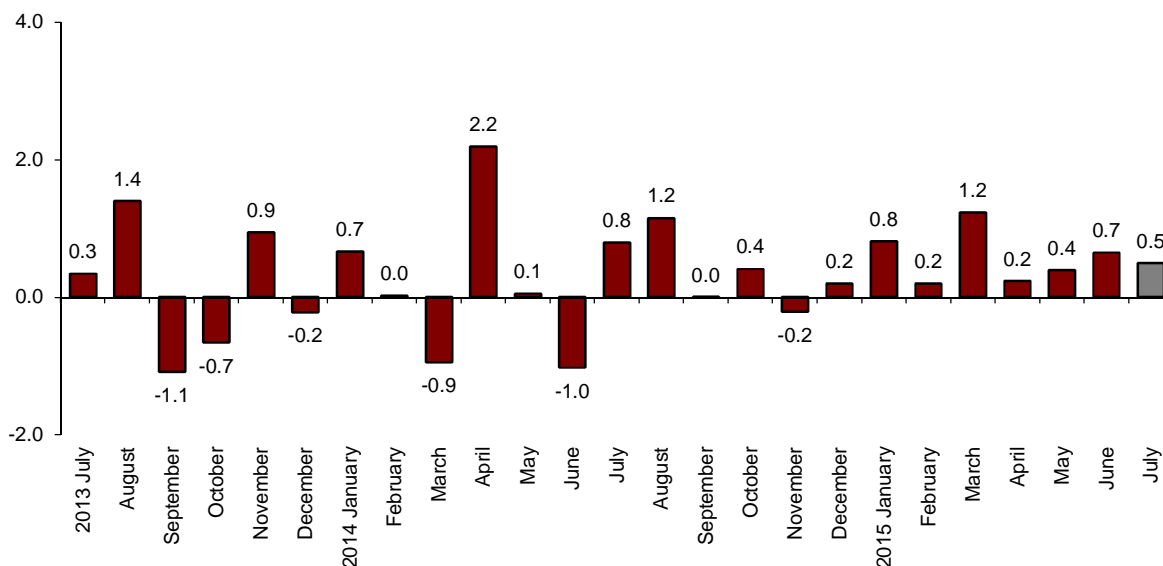
The monthly variation of turnover¹ for the market Services Sector is 0.5% after adjusting for seasonal and calendar effects

The annual rate of turnover stands at 5.7% in the seasonally and calendar adjusted series and at 6.0% in the original series

Monthly evolution of the turnover for the Market Services Sector

The monthly variation of the general index of the turnover for the Market Services Sector between July and June was 0.5%, after adjusting for seasonally and calendar effects. This rate was two tenths higher than that registered in May.

**General index of the turnover for the Market Services Sector
Adjusted for seasonal and calendar effects. Monthly rate**



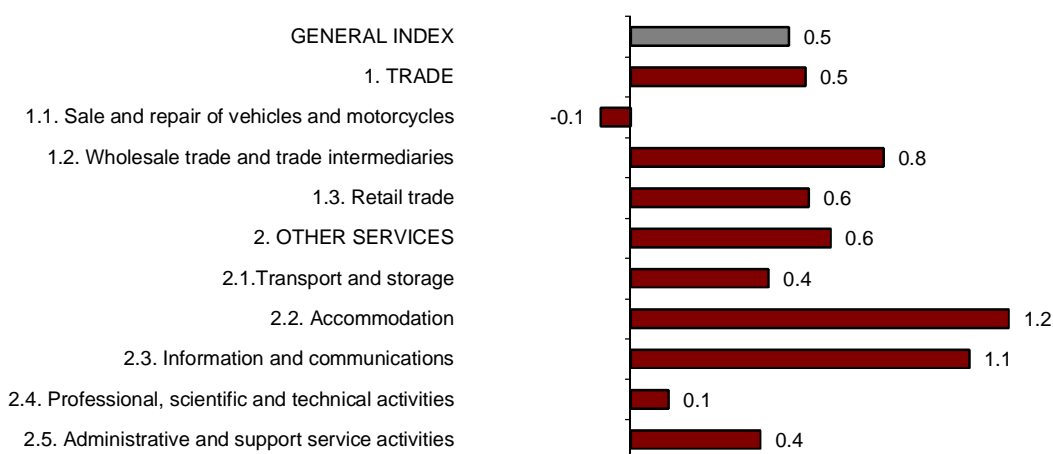
¹ As explained in the methodology for this value index, the information is presented in current terms (nominal terms), that is, without adjusting the effects in the price variation thereof.

Trade registered a monthly rate of 0.5% and the monthly rate of *Other services* was 0.6%, after adjusting for seasonal and calendar effects.

All the sectors registered positive monthly rates, except for *Sale and repair of vehicles and motorcycles* (−0.1%).

Hotel industry (1.2%) and *Information and communication* (1.1%) registered the greatest increases.

**General and by sectors turnover Index
Adjusted for seasonal and calendar effects. Monthly rate**



A more detailed analysis showed the activities that registered the highest monthly rates and those that registered the greatest decreases in July.

**Activities with the greatest monthly rates of the Services Sector turnover index
adjusted for seasonal and calendar effects**

Activity (CNAE-2009 groups)	Monthly rate (%)
Office administrative and other business support activities	3.3
Air transport	2.6
Programming and broadcasting activities	1.7

**Activities with the lowest monthly rates of the Services Sector turnover index
adjusted for seasonal and calendar effects**

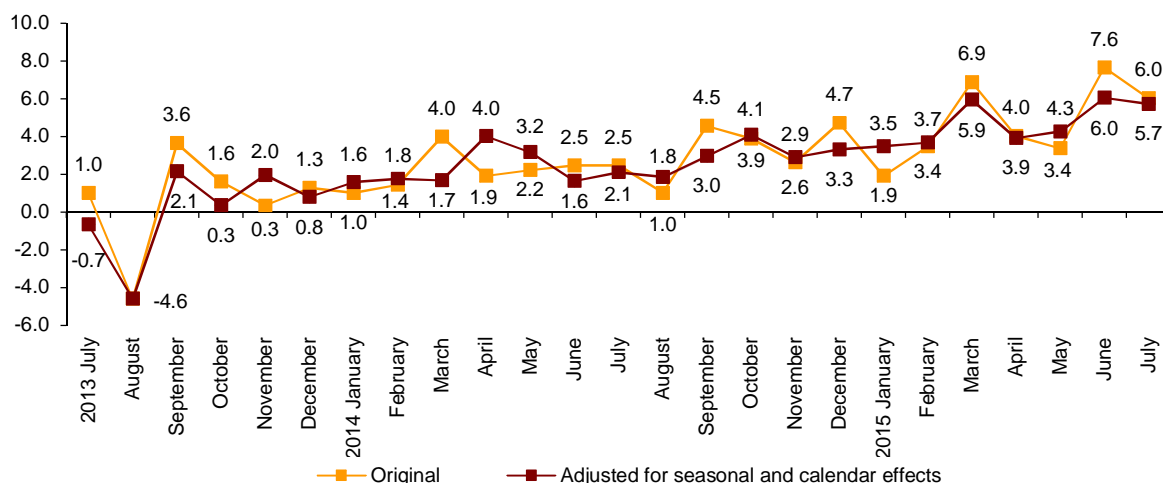
Activity (CNAE-2009 groups)	Monthly rate (%)
Other professional scientific and technical activities	-4.8
Advertising and market research	-0.8
Travel agencies and tour operator services	-0.8

Annual turnover evolution rates for the Market Services sector

In July, the general Index of the turnover for the Market Services Sector, after adjusting for seasonal and calendar effects, registered a variation of 5.7%, as compared with the same month of 2014. This rate was three tenths lower than that registered in June.

The original series registered an annual variation of 6.0%, that is, 1.6 points lower than that recorded in June.

General index of the turnover for the Market Services Sector Annual Rate



After adjusting for seasonal and calendar effects, *Trade* increased by 5.8% as compared to July 2014 and *Other services* did so by 5.7%.

All the sectors registered positive annual rates, *Sale and repair of vehicles and motorcycles* (20.1%) was the one growing the most.

Annual rates of the Turnover index for the Market Services Sector: General and by sector

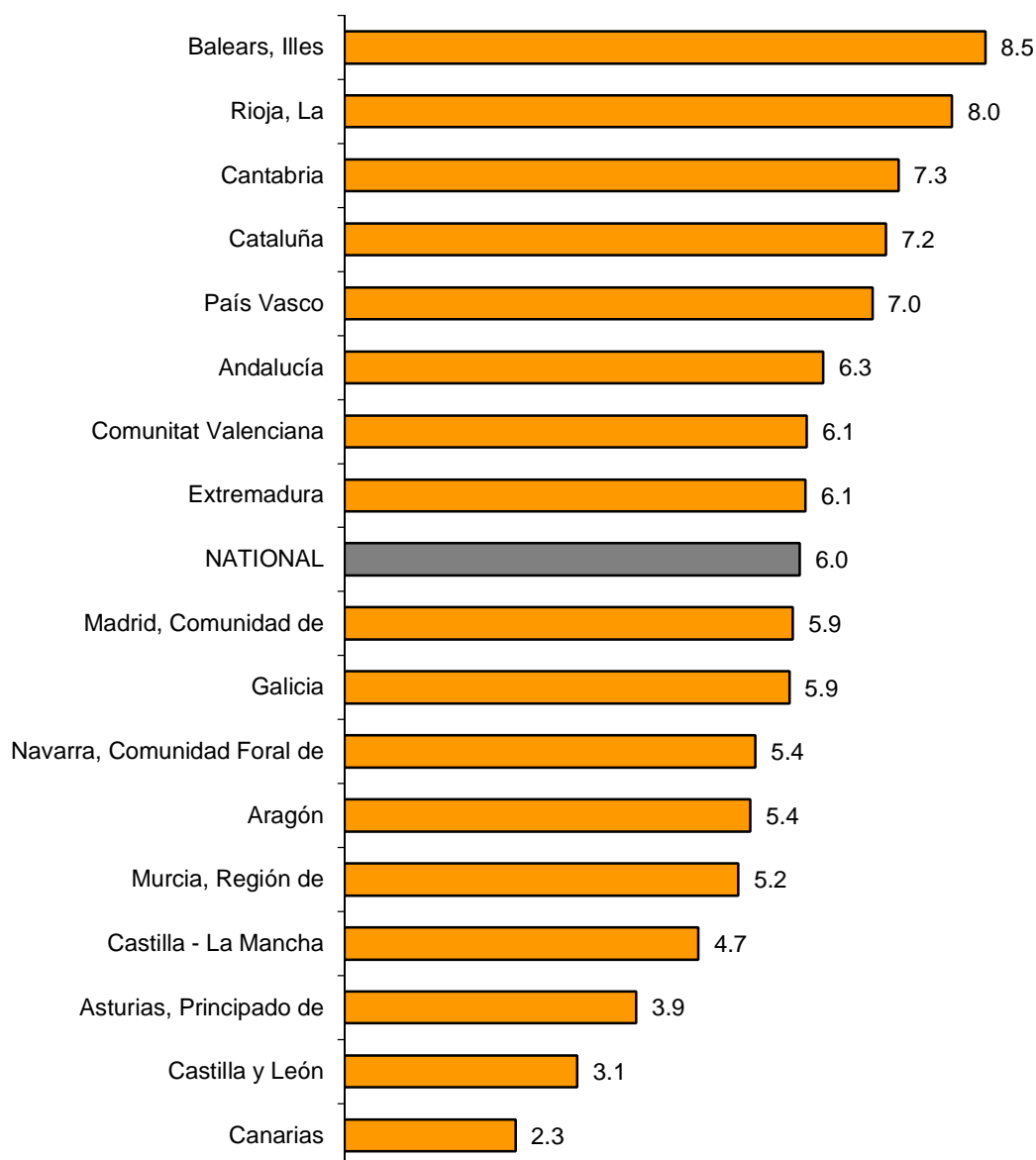
	Original index	Seasonally adjusted index
	Annual rate (%)	Annual rate (%)
GENERAL INDEX	6.0	5.7
1. TRADE	6.1	5.8
1.1. Sale and repair of vehicles and motorcycles	19.0	20.1
1.2. Wholesale trade	5.6	5.1
1.3. Retail trade	3.3	2.7
2. OTHER SERVICES	5.9	5.7
2.1. Transport and storage	5.6	5.3
2.2. Accommodation	5.8	5.6
2.3. Information and communications	5.3	5.0
2.4. Professional, scientific and technical activities	5.7	5.4
2.5. Administrative and support service activities	7.6	7.3

Results by Autonomous Community. Annual turnover variation rates. Original series.

In July, all the Autonomous Communities registered increases in their turnover in the Market Service Sector as compared to the same month of the previous year.

Illes Balears (8.5%), La Rioja (8.0%), and Cantabria (7.3%) registered the greatest annual increases. In turn, Canarias (2.3%), Castilla y León (3.1%), and Principado de Asturias (3.9%) registered the lowest increases.

**General Indices: National and by Autonomous Community
Turnover Annual Rate**



Evolution of employment

Employment in the Market Services Sector increased by 2.0% in July, as compared with the same month of the previous year. This rate is one tenth lower than that of June.

Employment increased by 1.4% in *Trade* and 2.4% in *Other services*.

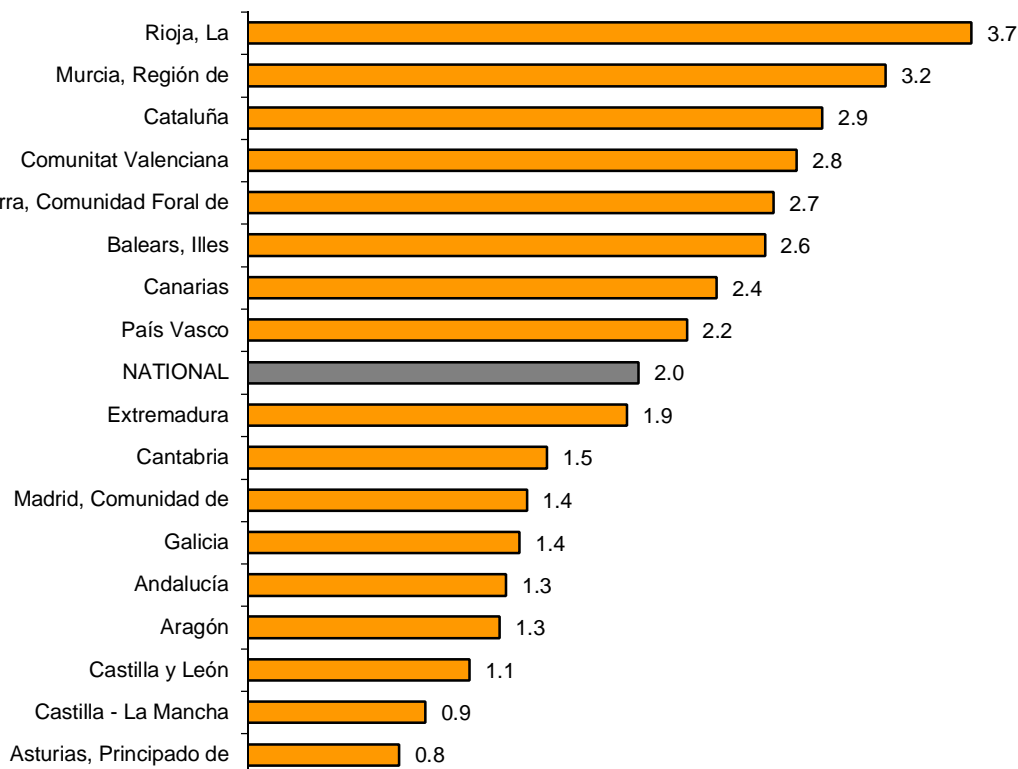
National Indices of employed personnel: general and by sector

	Index	Rate (%)	
		Monthly	Annual
GENERAL INDEX	99.6	0.3	2.0
1. TRADE	97.2	0.3	1.4
1.1. Sale and repair of vehicles and motorcycles	89.9	1.0	1.8
1.2. Wholesale trade	97.9	-0.8	1.9
1.3. Retail trade	98.1	0.9	1.1
2. OTHER SERVICES	101.2	0.3	2.4
2.1. Transport and storage	97.5	0.3	1.7
2.2. Hotel industry	105.5	1.1	1.5
2.3. Information and communications	96.2	0.2	2.7
2.4. Professional, scientific and technical activities	96.9	-0.2	1.7
2.5. Administrative and support service activities	104.6	-0.2	4.5

Results by Autonomous Community. Annual variation rates of occupation

All Autonomous Communities registered positive annual rates in employment. La Rioja (3.7%) recorded the greatest increase.

General Indices: National and by Autonomous Community Annual rate of employed personnel



Services Sector Activity Indicators. Base 2010

July 2015

Provisional data

1. Turnover indices: General and by sector. Adjusted for seasonal and calendar effects

	Index	Rate (%)		
		Monthly	Annual	Year-to-date average
GENERAL INDEX	98.4	0.5	5.7	4.7
1. TRADE	98.3	0.5	5.8	5.0
1.1. Sale and repair of vehicles and motorcycles	96.7	-0.1	20.1	19.9
1.2. Wholesale trade	100.7	0.8	5.1	4.6
1.3. Retail trade	94.5	0.6	2.7	1.6
2. OTHER SERVICES	99.2	0.6	5.7	4.2
2.1. Transport and storage	107.9	0.4	5.3	4.5
2.2. Hotel industry	103.1	1.2	5.6	4.5
2.3. Information and communications	91.8	1.1	5.0	1.9
2.4. Professional, scientific and technical activities	93.4	0.1	5.4	4.3
2.5. Administrative and support service activities	99.4	0.4	7.3	6.7

2. Turnover indices: General and by sector. Adjusted for calendar effects

	Index	Rate (%)	
		Annual	Year-to-date average
GENERAL INDEX	107.1	5.9	4.8
1. TRADE	104.9	6.0	5.0
1.1. Sale and repair of vehicles and motorcycles	107.2	19.3	20.2
1.2. Wholesale trade	105.8	5.4	4.7
1.3. Retail trade	102.4	3.3	1.6
2. OTHER SERVICES	111.0	5.8	4.3
2.1. Transport and storage	117.1	5.5	4.6
2.2. Hotel industry	129.7	5.8	4.5
2.3. Information and communications	92.4	5.3	2.0
2.4. Professional, scientific and technical activities	102.7	5.6	4.5
2.5. Administrative and support service activities	126.8	7.6	7.0

3. National turnover indices: General and by branch of activity.

Original series

	Index	Rate (%)	
		Annual	Year-to-date average
GENERAL INDEX	108.4	6.0	4.8
1. TRADE	106.5	6.1	5.1
1.1. SALE AND REPAIR OF VEHICLES	109.1	19.0	20.0
- Sale of motor vehicles	110.3	20.9	22.7
- Maintenance and repair of motor vehicles	102.0	8.9	5.3
1.2. WHOLESALE TRADE AND COMMISSION TRADE	107.7	5.6	4.7
- Wholesale on a fee or contract basis	111.3	11.6	6.3
- Wholesale of agricultural raw materials and live animals	106.1	2.1	2.5
- Wholesale of food, beverages and tobacco	109.7	11.8	7.2
- Wholesale of household goods	114.3	5.3	3.9
- Wholesale of information and communication equipment	88.0	9.5	9.3
- Wholesale of other machinery, equipment and supplies	104.1	15.1	10.0
- Other specialised wholesale trade	107.8	-2.3	1.4
- Non-specialised wholesale trade	108.4	6.9	5.7
1.3. RETAIL TRADE	103.1	3.3	1.5
2. OTHER SERVICES	111.8	5.9	4.3
2.1. TRANSPORTATION AND STORAGE SERVICES	118.5	5.6	4.7
Land transport	106.9	5.0	3.8
- Rail transport	118.4	10.8	4.9
- Taxi operation	117.1	6.3	3.1
- Other passenger land transport	92.8	2.5	0.9
- Freight transport by road and removal services	108.2	4.8	4.4
Water transport	100.1	8.3	3.9
Air transport	144.4	7.9	5.2
Warehousing and support activities for transportation	131.1	5.6	5.3
Post and courier activities	96.5	4.8	6.1
2.2. ACCOMMODATION AND FOOD SERVICES ACTIVITIES	129.1	5.8	4.5
Accommodation	180.4	7.7	5.7
Food and beverage service activities	109.6	4.6	3.9
2.3. INFORMATION AND COMMUNICATION	93.3	5.3	2.0
Publishing activities	109.0	4.4	2.5
Motion picture, television programme production and music publishing activities	78.0	11.3	1.6
Programming and broadcasting activities	94.0	14.7	10.2
Telecommunications	76.4	2.1	-1.7
Computer programming, consultancy and related activities	120.7	7.2	4.9
Information service activities	102.4	4.3	2.4
2.4. PROFESSIONAL, SCIENTIFIC AND TECHNICAL ACTIVITIES	103.4	5.7	4.5
Legal, accounting and management consulting activities	123.4	8.1	6.3
Architectural and engineering activities; technical testing and analysis	94.0	6.8	2.5
Advertising and market research	88.1	1.4	4.7
Other professional scientific and technical activities	100.0	-0.8	3.1
2.5. ADMINISTRATIVE AND SUPPORT SERVICE ACTIVITIES	127.6	7.6	7.0
Employment activities	160.2	19.2	19.8
Travel agencies and tour operator services	158.7	6.8	7.7
Security and investigation activities	103.1	2.2	2.2
Cleaning activities	97.1	2.2	2.1
Office administrative and other business support activities	92.6	13.0	7.8

4. Employed personnel indices: General and by branch of activity

	Index	Rate (%)		
		Monthly	Annual	Year-to-date average
GENERAL INDEX	99.6	0.3	2.0	2.0
1. TRADE	97.2	0.3	1.4	1.3
1.1. SALE AND REPAIR OF VEHICLES	89.9	1.0	1.8	1.7
- Sale of motor vehicles	88.1	1.6	2.7	2.5
- Maintenance and repair of motor vehicles	91.9	0.4	0.8	1.0
1.2. WHOLESALE TRADE AND COMMISSION TRADE	97.9	-0.8	1.9	2.0
- Wholesale on a fee or contract basis	98.1	-0.6	1.1	2.1
- Wholesale of agricultural raw materials and live animals	104.9	0.7	1.4	1.9
- Wholesale of food, beverages and tobacco	101.8	-3.4	3.3	2.3
- Wholesale of household goods	95.4	0.3	0.4	1.0
- Wholesale of information and communication equipment	99.0	0.2	1.8	2.3
- Wholesale of other machinery, equipment and supplies	96.7	0.7	2.1	2.1
- Other specialised wholesale trade	93.8	0.6	1.8	2.4
- Non-specialised wholesale trade	94.7	2.2	1.8	2.6
1.3. RETAIL TRADE	98.1	0.9	1.1	0.8
2. OTHER SERVICES	101.2	0.3	2.4	2.4
2.1. TRANSPORTATION AND STORAGE SERVICES	97.5	0.3	1.7	1.8
Land transport	98.7	-0.2	2.3	2.4
- Rail transport	95.6	-0.2	-1.8	-2.6
- Taxi operation	98.1	0.0	0.3	0.3
- Other passenger land transport	96.0	-3.9	1.6	1.6
- Freight transport by road and removal services	99.5	0.8	3.0	3.2
Water transport	103.8	6.3	0.6	1.1
Air transport	93.5	2.3	-0.4	-1.5
Warehousing and support activities for transportation	100.3	0.8	1.9	2.0
Post and courier activities	85.7	0.8	-2.0	-1.4
2.2. ACCOMMODATION AND FOOD SERVICES ACTIVITIES	105.5	1.1	1.5	1.2
Accommodation	119.8	5.9	2.4	1.2
Food and beverage service activities	101.9	-0.4	1.2	1.2
2.3. INFORMATION AND COMMUNICATION	96.2	0.2	2.7	2.1
Publishing activities	82.2	-0.1	0.4	0.5
Motion picture, television programme production and music publishing activities	76.3	-1.0	3.5	2.1
Programming and broadcasting activities	89.5	-0.1	2.3	3.0
Telecommunications	86.8	0.4	0.0	-0.6
Computer programming, consultancy and related activities	107.4	0.4	4.2	3.3
Information service activities	94.7	0.1	-1.2	-1.1
2.4. PROFESSIONAL, SCIENTIFIC AND TECHNICAL ACTIVITIES	96.9	-0.2	1.7	1.7
Legal, accounting and management consulting activities	99.9	0.0	1.3	1.2
Architectural and engineering activities; technical testing and analysis	92.6	-0.1	2.2	1.9
Advertising and market research	93.9	-2.0	2.7	4.0
Other professional scientific and technical activities	98.3	-0.3	1.5	1.2
2.5. ADMINISTRATIVE AND SUPPORT SERVICE ACTIVITIES	104.6	-0.2	4.5	5.1
Employment activities	140.4	0.0	14.4	17.1
Travel agencies and tour operator services	100.5	6.2	5.5	3.5
Security and investigation activities	94.4	0.2	1.2	2.2
Cleaning activities	96.4	0.9	1.6	1.0
Office administrative and other business support activities	101.2	-5.1	2.6	5.6

5. Turnover indices: National and by Autonomous Community

	Index	Rate (%)	
		Annual	Year-to-date average
NATIONAL	108.4	6.0	4.8
Andalucía	104.5	6.3	4.2
Aragón	112.5	5.4	2.0
Asturias, Principado de	100.2	3.9	3.0
Balears, Illes	163.7	8.5	6.8
Canarias	113.5	2.3	2.5
Cantabria	106.7	7.3	3.8
Castilla y León	106.2	3.1	2.7
Castilla-La Mancha	101.2	4.7	4.1
Cataluña	114.5	7.2	6.4
Comunitat Valenciana	110.9	6.1	6.3
Extremadura	105.0	6.1	5.2
Galicia	108.9	5.9	4.1
Madrid, Comunidad de	101.4	5.9	4.7
Murcia, Región de	113.8	5.2	4.3
Navarra, Comunidad Foral de	100.2	5.4	3.4
País Vasco	104.9	7.0	4.0
Rioja, La	118.1	8.0	5.7

6. Employed personnel indices: National and by Autonomous Community

	Index	Rate (%)		
		Monthly	Annual	Year-to-date average
NATIONAL	99.6	0.3	2.0	2.0
Andalucía	98.2	-0.9	1.3	1.6
Aragón	96.3	0.3	1.3	1.7
Asturias, Principado de	93.9	0.5	0.8	0.9
Balears, Illes	124.3	2.9	2.6	2.4
Canarias	100.0	0.5	2.4	1.5
Cantabria	101.6	2.9	1.5	1.4
Castilla y León	96.0	1.2	1.1	0.8
Castilla-La Mancha	98.9	0.9	0.9	1.9
Cataluña	103.6	0.6	2.9	3.0
Comunitat Valenciana	97.0	-0.1	2.8	2.0
Extremadura	102.3	0.4	1.9	2.5
Galicia	96.6	0.8	1.4	1.1
Madrid, Comunidad de	96.4	0.1	1.4	1.5
Murcia, Región de	103.0	-0.8	3.2	3.3
Navarra, Comunidad Foral de	102.0	1.7	2.7	3.2
País Vasco	101.0	0.4	2.2	2.4
Rioja, La	101.7	0.4	3.7	3.5