

14 November 2013

Services Sector Activity Indicators (SSAI). Base 2010
September 2013. *Provisional data*

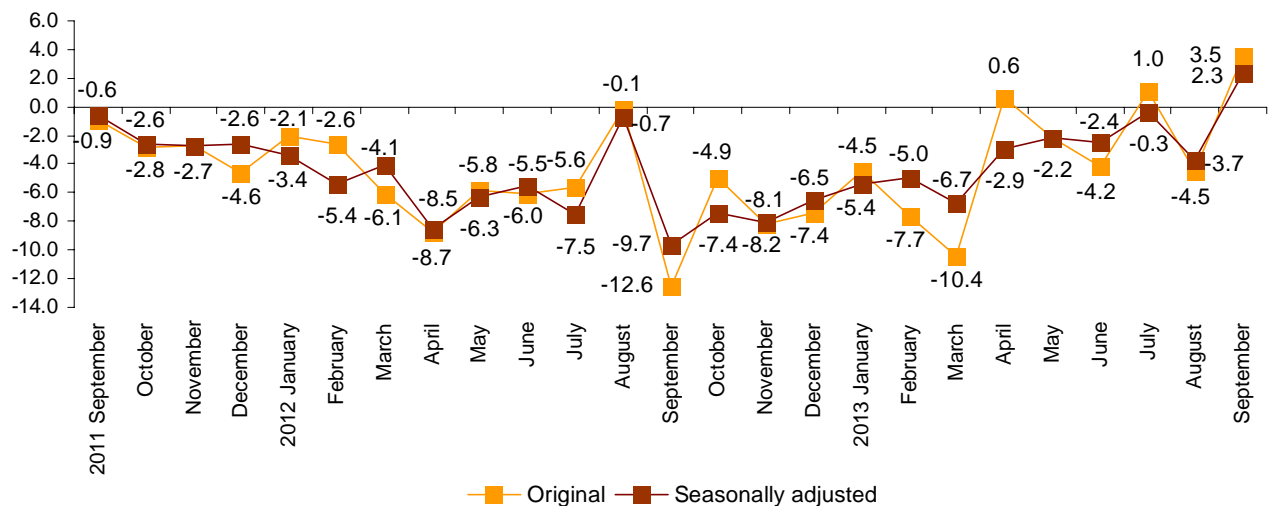
The annual rate of turnover for the market Services Sector stands at 2.3% in the seasonally and calendar adjusted series and at 3.5% in the original series

The monthly variation is –3.3% after adjusting for seasonal and calendar effects

The turnover for the market Services Sector registered a variation of 3.5% in September, as compared with the same month of the previous year. This rate was eight points higher than that registered in August.

After adjusting for seasonal and calendar effects, the annual rate was 2.3%, six points higher than that registered in August.

General index of the turnover for the Market Services Sector
Annual Rate



*Seasonally adjusted: adjusted for season and calendar effects.

Annual evolution of turnover for the Services Sector

Trade increased its turnover by 4.7% and Other Services did so by 1.7%.

By sectors, *Sale and repair of vehicles and motorcycles* (12.8%) registered the greatest increase. In turn, *Information and communications* was the only sector that registered a negative annual rate (−3.0%).

After adjusting for seasonal and calendar effects, all sectors presented positive rates as compared with September of the previous year, except *Information and communications* (−3.9%).

Annual rates of the national Turnover index by sector

	Original index	Seasonally adjusted index
	Annual rate (%)	Annual rate (%)
GENERAL INDEX	3.5	2.3
1. Trade	4.7	3.1
1.1. Sale and repair of vehicles and motorcycles	12.8	12.9
1.2. Wholesale trade	5.0	3.0
1.3. Retail trade	2.3	2.4
2. Other services	1.7	0.9
2.1. Transport and storage	3.1	0.9
2.2. Accommodation	3.2	3.5
2.3. Information and communications	-3.0	-3.9
2.4. Professional, scientific and technical activities	3.7	2.9
2.5. Administrative and support service activities	1.7	0.4

A more detailed analysis showed the activities that registered the highest annual rates and those that registered the greatest decreases in September.

Activities with the greatest annual rates of the Services Sector turnover

Activity (Elementary aggregate)	Gross Index	Annual rate (%)
Sale of motor vehicles	67.1	14.6
Employment activities	98.3	13.0
Wholesale of household goods	101.8	7.6
Accommodation	136.8	7.5

Activities with the lowest annual rates of the Services Sector turnover

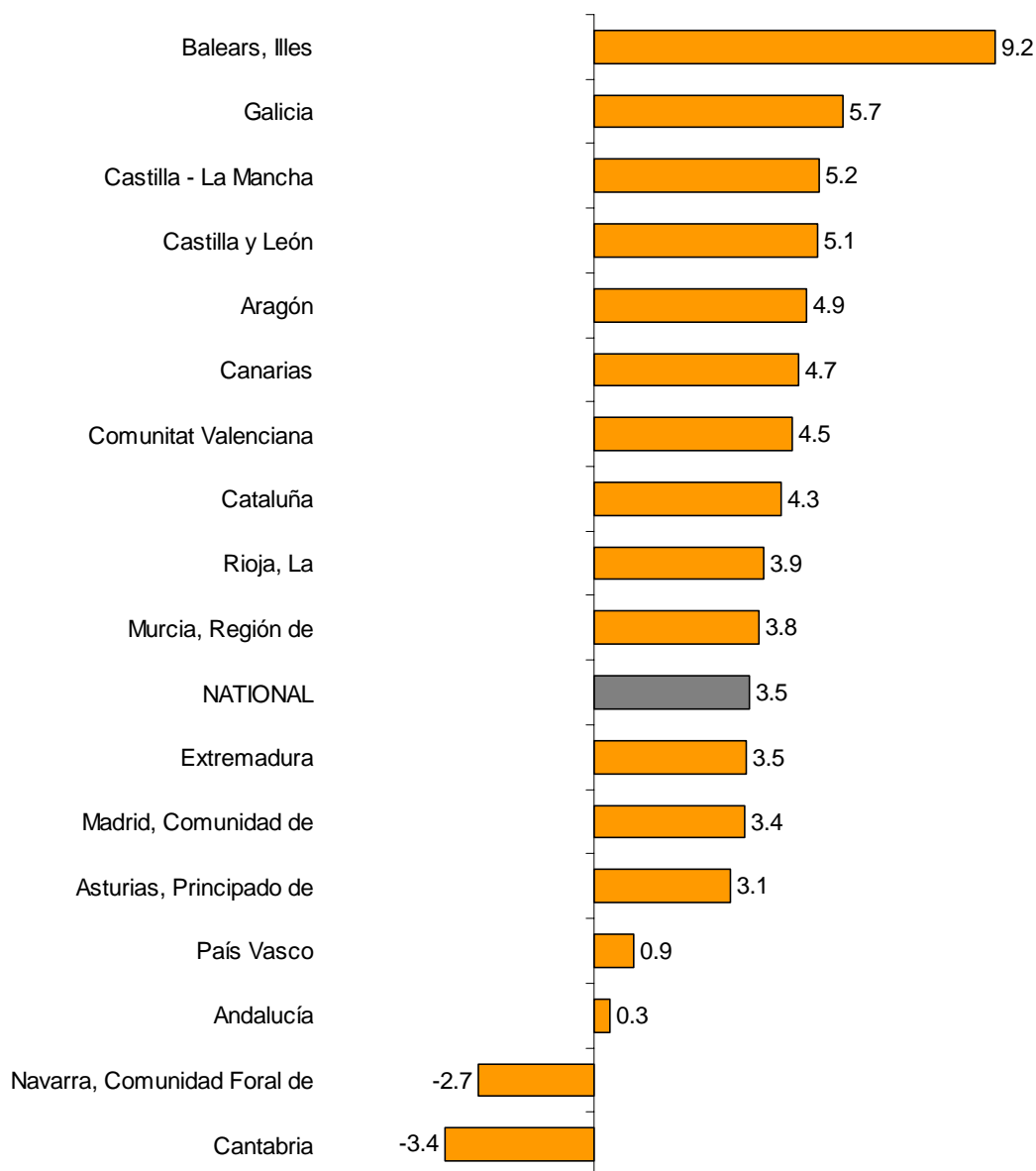
Activity (Elementary aggregate)	Gross Index	Annual rate (%)
Water transport	79.8	-13.1
Information service activities	94.6	-8.0
Programming and broadcasting activities	90.3	-5.4
Telecommunications	79.8	-4.7

Results by Autonomous Community. Annual turnover variation rates

In September, all Autonomous Communities registered positive annual rates of turnover in the Market Service Sector, except Cantabria (-3.4%) and Comunidad Foral de Navarra (-2.7%).

Illes Balears (9.2%), Galicia (5.7%) and Castilla-La Mancha (5.2%) were the Autonomous Communities that registered the greatest increases.

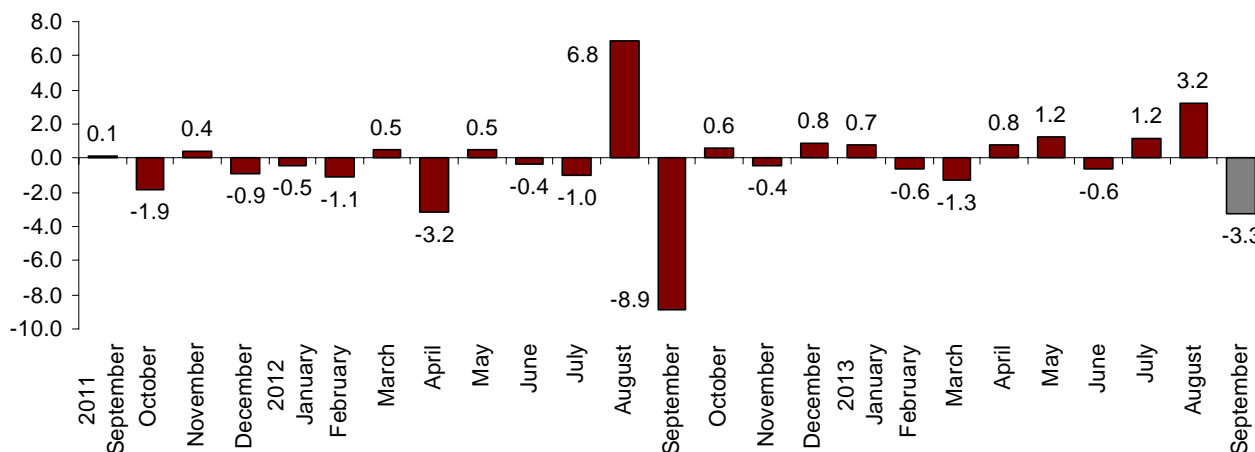
General Index by Autonomous Community Turnover Annual Rate



Monthly evolution of the Services Sector Turnover adjusted for seasonal and calendar effects

After eliminating the seasonal and calendar effect, the monthly variation of the General Index of Market Services Sector Turnover between September and August stood at -3.3% . This rate was 6.5 points lower than that registered in August.

General index of the turnover for the Market Services Sector Adjusted for seasonal and calendar effects. Monthly Rate

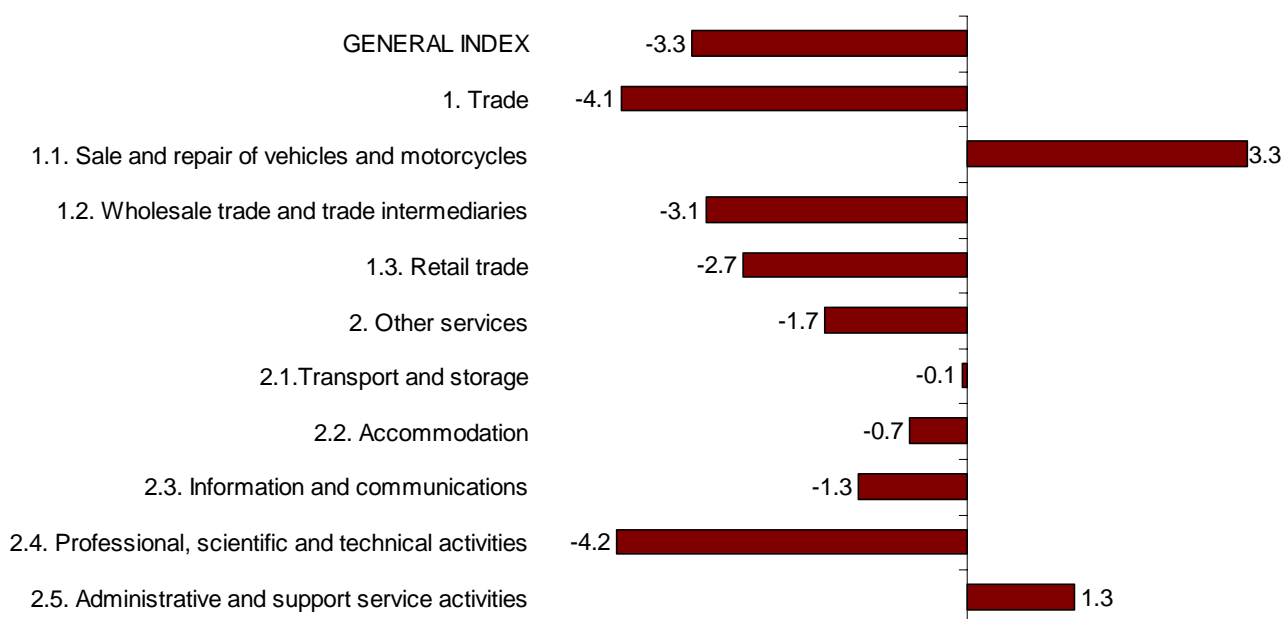


Monthly evolution of the Turnover by sectors adjusted for seasonal and calendar effects

After eliminating the seasonal and calendar effect, the monthly variations of *Trade* (-4.1%) and *Other Services* (-1.7%) were negative.

By sector, all of them registered negative rates, except *Sale and repair of vehicles and motorcycles* (3.3%) and *Administrative and support service activities* (1.3%).

General turnover Index and by sectors Adjusted for seasonal and calendar effects. Monthly rate



Evolution of occupation

Employment in the Market Services Sector experienced a variation of -0.8% in September, as compared with the same month of previous year. This rate was two tenths higher than that registered in August.

Trade and *Other Services* registered an annual variation of -1.8% and -0.1% , respectively.

All sectors registered negative annual rates, except *Accommodation* (0.7%) and *Administrative and support service activities* (1.3%). *Sale and repair of vehicles and motorcycles* registered the greatest decrease (-3.4%).

National Indices of employed personnel by sector

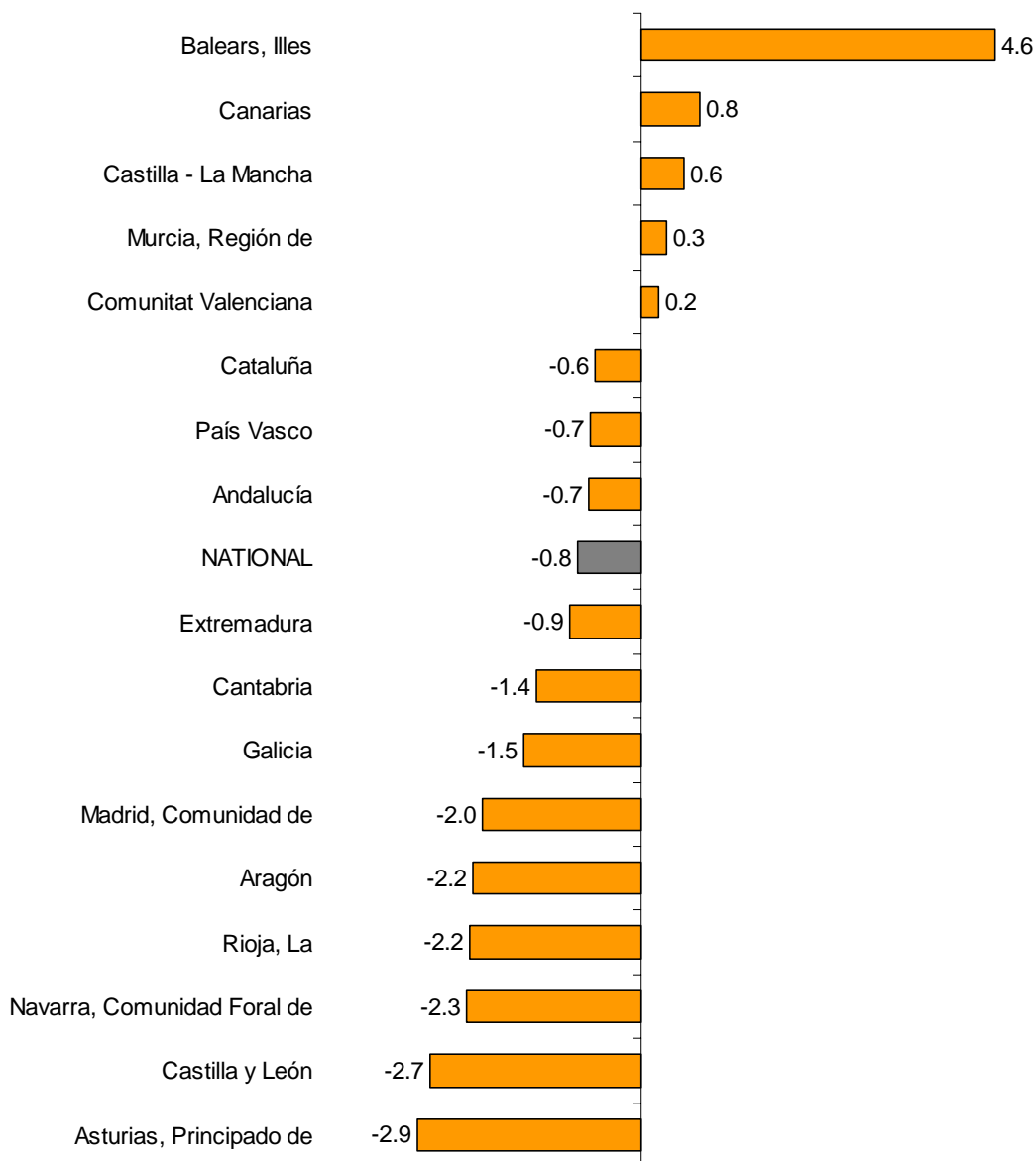
	Index	Monthly rate (%)	Annual rate (%)
GENERAL INDEX	95.9	0.4	-0.8
1. Trade	94.2	-0.3	-1.8
1.1. Sale and repair of vehicles and motorcycles	87.7	-0.5	-3.4
1.2. Wholesale trade	93.7	1.0	-1.3
1.3. Retail trade	95.7	-1.1	-1.8
2. Other services	97.0	0.9	-0.1
2.1. Transport and storage	94.6	0.2	-1.7
2.2. Accommodation	101.2	0.4	0.7
2.3. Information and communications	93.5	0.7	-2.4
2.4. Professional, scientific and technical activities	94.2	0.3	-0.4
2.5. Administrative and support service activities	97.6	2.6	1.3

Results by Autonomous Community. Variation rates of occupation

Five Autonomous Communities registered positive rates in employment, as compared with September of 2012. Illes Balears (4.6%) registered the greatest increase.

In turn, Principado de Asturias (-2.9%), Castilla y León (-2.7%) and Comunidad Foral de Navarra (-2.3%) registered the greatest decreases in occupation.

General Index by Autonomous Community Annual rate of employed personnel



Services Sector Activity Indicators. Base 2010 September 2013

Provisional data

1. Monthly turnover indices by sector

	Index	% variation		
		Monthly	Annual	Year-to-date average
GENERAL INDEX	89.9	4.3	3.5	-3.2
1. TRADE	87.7	5.3	4.7	-3.0
1.1. SALE AND REPAIR OF VEHICLES	68.6	17.1	12.8	-8.7
- Sale of motor vehicles	67.1	20.8	14.6	-9.0
- Maintenance and repair of motor vehicles	76.9	1.6	4.8	-7.4
1.2. WHOLESALE TRADE AND COMMISSION TRADE	90.7	9.4	5.0	-1.8
- Wholesale on a fee or contract basis	99.2	12.4	1.9	-0.4
- Wholesale of agricultural raw materials and live animals	99.2	7.0	3.5	-0.2
- Wholesale of food, beverages and tobacco	80.3	-11.6	0.8	0.1
- Wholesale of household goods	101.8	24.6	7.6	-1.4
- Wholesale of information and communication equipment	68.9	28.2	6.1	-2.4
- Wholesale of other machinery, equipment and supplies	82.0	26.8	4.1	-8.4
- Other specialised wholesale trade	98.7	12.4	6.7	-2.3
- Non-specialised wholesale trade	89.4	22.6	1.7	-4.2
1.3. RETAIL TRADE	88.3	-3.4	2.3	-3.4
2. OTHER SERVICES	93.8	2.7	1.7	-3.5
2.1. TRANSPORTATION AND STORAGE SERVICES	98.5	4.2	3.1	-1.0
Land transport	91.6	11.7	2.0	-2.4
- Rail transport	97.9	13.5	1.9	1.0
- Taxi operation	105.0	13.8	0.8	-2.2
- Other passenger land transport	96.7	21.6	-3.2	-6.7
- Freight transport by road and removal services	89.1	9.4	3.4	-1.8
Water transport	79.8	-18.0	-13.1	-12.7
Air transport	114.6	-9.5	1.6	-2.1
Warehousing and support activities for transportation	106.6	0.5	5.1	1.4
Post and courier activities	86.2	24.2	5.6	-3.2
2.2. ACCOMMODATION AND FOOD SERVICES ACTIVITIES	104.2	-15.1	3.2	-0.9
Accommodation	136.8	-26.1	7.5	2.3
Food and beverage service activities	92.0	-6.7	0.7	-2.5
2.3. INFORMATION AND COMMUNICATION	87.1	12.9	-3.0	-6.4
Publishing activities	87.9	39.3	-2.6	-6.3
Motion picture, television programme production and music publishing activities	86.0	44.3	-4.3	-13.8
Programming and broadcasting activities	90.3	33.9	-5.4	-2.8
Telecommunications	79.8	3.6	-4.7	-8.4
Computer programming, consultancy and related activities	99.4	11.2	0.4	-2.5
Information service activities	94.6	20.6	-8.0	-8.0
2.4. PROFESSIONAL, SCIENTIFIC AND TECHNICAL ACTIVITIES	84.3	23.9	3.7	-5.5
Legal, accounting and management consulting activities	82.9	13.4	4.3	-3.1
Architectural and engineering activities; technical testing and analysis	89.1	22.5	3.4	-6.5
Advertising and market research	80.9	46.3	4.0	-7.5
Other professional scientific and technical activities	78.0	23.8	1.7	-7.7
2.5. ADMINISTRATIVE AND SUPPORT SERVICE ACTIVITIES	102.4	-8.8	1.7	-4.7
Employment activities	98.3	5.8	13.0	1.3
Travel agencies and tour operator services	115.1	-23.3	1.6	-5.5
Security and investigation activities	92.9	0.3	-0.2	-1.8
Cleaning activities	95.8	2.8	0.8	-2.5
Office administrative and other business support activities	85.0	19.8	0.0	-9.1

2. National turnover indices, adjusted for the calendar effect

	Adjusted index	% variation		
		Monthly	Annual	Year-to-date average
GENERAL INDEX	90.5	4.2	2.2	-2.9
1. Trade	88.4	5.1	3.0	-2.7
1.1. Sale and repair of vehicles	70.4	21.4	12.9	-8.1
1.2. Wholesale trade	91.6	9.2	2.9	-1.5
1.3. Retail trade	89.5	-1.5	2.4	-3.2
2. Other Services	94.1	2.7	0.9	-3.3
2.1. Transportation and storage	99.2	4.1	1.8	-0.8
2.2. Accommodation and food service activities	103.9	-15.1	3.6	-0.7
2.3. Information and communication	87.5	12.8	-3.9	-6.2
2.4. Professional, scientific and technical activities	84.6	23.8	2.9	-5.5
2.5. Administrative and support service activities	102.7	-8.8	1.1	-4.4

3. National turnover indices, adjusted for seasonal effects and by calendar

	index	% variation		
		Monthly	Annual	Year-to-date average
GENERAL INDEX	91.5	-3.3	2.3	-3.0
1. Trade	90.8	-4.1	3.1	-2.7
1.1. Sale and repair of vehicles	74.5	3.3	12.9	-8.4
1.2. Wholesale trade	93.1	-3.1	3.0	-1.6
1.3. Retail trade	92.9	-2.7	2.4	-3.2
2. Other Services	92.3	-1.7	0.9	-3.5
2.1. Transportation and storage	99.0	-0.1	0.9	-1.0
2.2. Accommodation and food service activities	94.8	-0.7	3.5	-1.3
2.3. Information and communication	87.0	-1.3	-3.9	-6.3
2.4. Professional, scientific and technical activities	89.6	-4.2	2.9	-5.6
2.5. Administrative and support service activities	93.9	1.3	0.4	-4.6

4. National turnover indices Seasonally adjusted

		% variation		
		Annual ¹	Quarterly ²	Monthly ³
2009		-13.5		
2010		0.8		
2011		-1.0		
2012		-6.1		
2013		-3.0		
2011	TIII	0.5	-0.6	
	TIV	-2.6	-2.0	
2012	TI	-4.3	-1.4	
	TII	-6.8	-3.0	
	TIII	-6.0	0.3	
	TIV	-7.3	-3.4	
2013	TI	-5.7	0.3	
	TII	-2.5	0.3	
	TIII	-0.7	2.2	
2012	SEP	-9.7		-8.9
	OCT	-7.4		0.6
	NOV	-8.1		-0.4
	DEC	-6.5		0.8
2013	JAN	-5.4		0.7
	FEB	-5.0		-0.6
	MAR	-6.7		-1.3
	APR	-2.9		0.8
	MAY	-2.2		1.2
	JUN	-2.4		-0.6
	JUL	-0.3		1.2
	AUG	-3.7		3.2
	SEP	2.3		-3.3

Note:

¹**Annual rate:** Variation of a period over the same period of the previous year

²**Quarterly rate:** Variation of a quarter over the previous quarter. In the current quarter it is the average to date over the previous quarter

³**Monthly rate:** Variation of a month over the previous month

5. National employed personnel indices by branch of activity

	Index	% variation		
		Monthly	Annual	Year-to-date average
GENERAL INDEX	95.9	0.4	-0.8	-1.8
1. TRADE	94.2	-0.3	-1.8	-2.1
1.1. SALE AND REPAIR OF VEHICLES	87.7	-0.5	-3.4	-4.1
- Sale of motor vehicles	84.2	-0.6	-5.0	-5.6
- Maintenance and repair of motor vehicles	91.5	-0.3	-1.8	-2.5
1.2. WHOLESALE TRADE AND COMMISSION TRADE	93.7	1.0	-1.3	-1.6
- Wholesale on a fee or contract basis	96.1	-0.3	-2.1	-1.4
- Wholesale of agricultural raw materials and live animals	98.6	-2.7	-0.4	-1.1
- Wholesale of food, beverages and tobacco	95.7	4.0	0.6	-0.2
- Wholesale of household goods	93.0	-0.1	-2.0	-1.1
- Wholesale of information and communication equipment	95.1	0.2	-1.2	-2.1
- Wholesale of other machinery, equipment and supplies	92.7	0.3	-0.5	-2.6
- Other specialised wholesale trade	89.4	-0.5	-3.8	-3.7
- Non-specialised wholesale trade	91.3	-2.3	-7.3	-6.1
1.3. RETAIL TRADE	95.7	-1.1	-1.8	-2.0
2. OTHER SERVICES	97.0	0.9	-0.1	-1.5
2.1. TRANSPORTATION AND STORAGE SERVICES	94.6	0.2	-1.7	-2.3
Land transport	95.0	0.8	-0.6	-1.9
- Rail transport	98.8	-0.1	-0.5	-0.7
- Taxi operation	98.8	-0.2	-2.1	-1.8
- Other passenger land transport	98.3	5.0	-1.7	-2.0
- Freight transport by road and removal services	93.2	-0.1	-0.1	-1.9
Water transport	99.8	-3.0	0.5	-4.6
Air transport	91.2	-2.5	-7.1	-4.4
Warehousing and support activities for transportation	96.9	-0.3	-2.2	-2.1
Post and courier activities	88.3	-0.8	-5.1	-4.1
2.2. ACCOMMODATION AND FOOD SERVICES ACTIVITIES	101.2	0.4	0.7	-0.4
Accommodation	107.2	-4.6	1.0	-1.0
Food and beverage service activities	99.8	2.0	0.6	-0.3
2.3. INFORMATION AND COMMUNICATION	93.5	0.7	-2.4	-3.5
Publishing activities	83.1	0.4	-4.1	-6.1
Motion picture, television programme production and music publishing activities	75.8	3.6	-10.7	-12.2
Programming and broadcasting activities	89.7	0.1	-3.7	-7.2
Telecommunications	88.0	0.8	-3.9	-4.9
Computer programming, consultancy and related activities	101.5	0.7	-0.4	-1.0
Information service activities	94.6	-0.6	-3.7	-3.1
2.4. PROFESSIONAL, SCIENTIFIC AND TECHNICAL ACTIVITIES	94.2	0.3	-0.4	-1.7
Legal, accounting and management consulting activities	97.8	0.4	0.0	-0.5
Architectural and engineering activities; technical testing and analysis	90.3	-0.4	-0.3	-2.8
Advertising and market research	88.0	2.4	-3.6	-4.5
Other professional scientific and technical activities	95.0	0.2	0.1	-1.3
2.5. ADMINISTRATIVE AND SUPPORT SERVICE ACTIVITIES	97.6	2.6	1.3	-1.3
Employment activities	103.1	10.1	10.8	1.8
Travel agencies and tour operator services	90.8	-1.2	-2.8	-4.4
Security and investigation activities	93.2	-1.0	-2.7	-3.2
Cleaning activities	97.8	1.2	0.5	-1.3
Office administrative and other business support activities	96.7	3.6	-0.4	-1.9

6. General turnover index by Autonomous Community

	Index	% variation		
		Monthly	Annual	Year-to-date average
NATIONAL INDEX	89.9	4.3	3.5	-3.2
Andalucía	83.4	-2.2	0.3	-3.7
Aragón	89.6	0.8	4.9	-2.2
Asturias, Principado de	85.3	-2.3	3.1	-4.1
Balears, Illes	116.3	-21.4	9.2	4.8
Canarias	98.8	-3.0	4.7	-2.6
Cantabria	85.8	-10.3	-3.4	-7.4
Castilla y León	89.8	-5.9	5.1	-1.7
Castilla-La Mancha	86.6	1.3	5.2	-4.4
Cataluña	91.9	10.7	4.3	-3.5
Comunitat Valenciana	89.4	2.1	4.5	-3.4
Extremadura	81.6	-9.4	3.5	-5.2
Galicia	95.7	-4.0	5.7	-3.5
Madrid, Comunidad de	89.3	13.9	3.4	-3.2
Murcia, Región de	83.6	-4.4	3.8	-0.4
Navarra, Comunidad Foral de	85.4	1.2	-2.7	-6.3
País Vasco	88.7	18.4	0.9	-4.5
Rioja, La	89.7	-2.0	3.9	0.1

7. General employed personnel index by Autonomous Community

	Index	% variation		
		Monthly	Annual	Year-to-date average
NATIONAL INDEX	95.9	0.4	-0.8	-1.8
Andalucía	94.8	0.5	-0.7	-1.6
Aragón	94.3	0.2	-2.2	-2.2
Asturias, Principado de	92.3	-0.6	-2.9	-3.4
Balears, Illes	112.9	-2.1	4.6	2.7
Canarias	96.8	1.0	0.8	-1.2
Cantabria	96.9	-2.4	-1.4	-2.6
Castilla y León	95.0	1.3	-2.7	-3.2
Castilla-La Mancha	95.2	0.1	0.6	-0.5
Cataluña	98.0	0.4	-0.6	-1.6
Comunitat Valenciana	94.0	1.0	0.2	-1.2
Extremadura	95.4	-1.4	-0.9	-2.0
Galicia	94.9	0.2	-1.5	-2.5
Madrid, Comunidad de	94.2	0.4	-2.0	-2.7
Murcia, Región de	95.0	0.2	0.3	-0.4
Navarra, Comunidad Foral de	96.3	0.6	-2.3	-3.3
País Vasco	97.4	0.6	-0.7	-1.0
Rioja, La	96.4	1.1	-2.2	-2.4