

20 January 2014

**Services Sector Activity Indicators (SSAI). Base 2010**  
November 2013. *Provisional data*

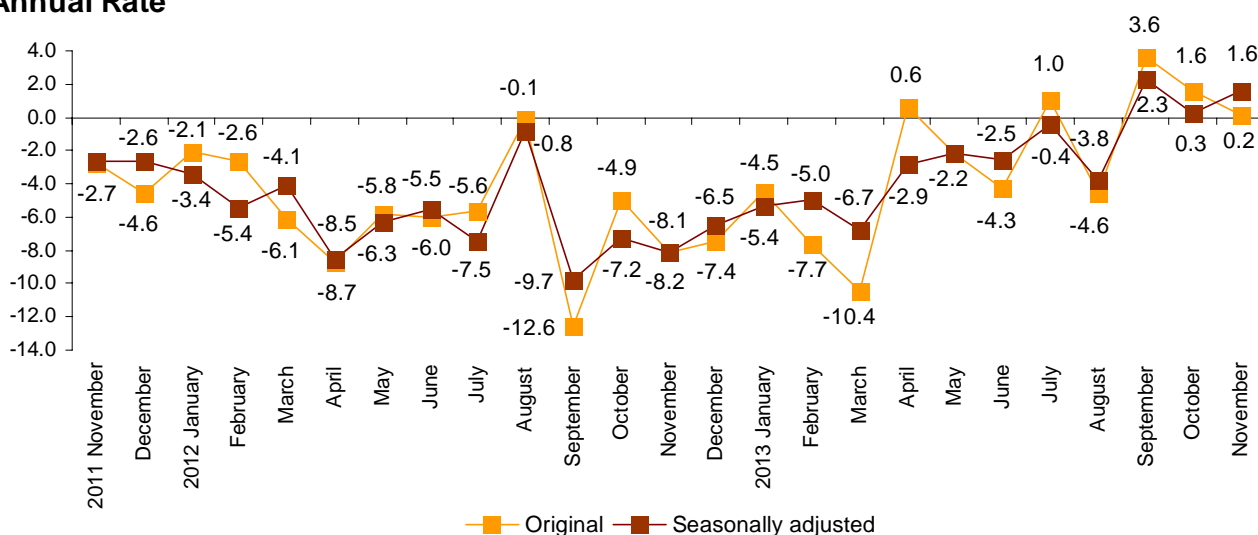
**The annual rate of turnover for the market Services Sector stands at 1.6% in the seasonally and calendar adjusted series and at 0.2% in the original series**

**The monthly variation is 0.6% after adjusting for seasonal and calendar effects**

The turnover for the market Services Sector registered a variation of 0.2% in November, as compared with the same month of the previous year. This rate was one point and four tenths lower than that registered in October.

After adjusting for seasonal and calendar effects, the annual rate was 1.6%, one point and three tenths over that registered in October.

**General index of the turnover for the Market Services Sector**  
**Annual Rate**



\*Seasonally adjusted: adjusted for season and calendar effects.

## Annual evolution of turnover for the Services Sector

Trade increased its turnover by 0.6%, whereas Other Services decreased its turnover by 0.5%.

By sectors, *Sale and repair of vehicles and motorcycles* (7.0%) and *Accommodation* (3.4%) registered the greatest increase. In turn, *Information and communications* (-2.3%) and *Professional, scientific and technical activities* (-1.9%) registered the greatest decrease.

After adjusting for seasonal and calendar effects, all sectors presented positive rates as compared with November of the previous year, except *Information and communications* (-1.6%) and *Professional, scientific and technical activities* (-1.0%).

### Annual rates of the national Turnover index by sector

|  | Original index  | Seasonally adjusted index |
|--|-----------------|---------------------------|
|  | Annual rate (%) | Annual rate (%)           |
| <b>GENERAL INDEX</b>                                   | 0.2             | 1.6                       |
| 1. Trade   | 0.6             | 2.2                       |
| 1.1. Sale and repair of vehicles and motorcycles       | 7.0             | 6.9                       |
| 1.2. Wholesale trade                                   | -1.4            | 0.9                       |
| 1.3. Retail trade                                      | 2.4             | 2.3                       |
| 2. Other services                                      | -0.5            | 0.3                       |
| 2.1. Transport and storage                             | -0.3            | 1.3                       |
| 2.2. Accommodation                                     | 3.4             | 2.9                       |
| 2.3. Information and communications                    | -2.3            | -1.6                      |
| 2.4. Professional, scientific and technical activities | -1.9            | -1.0                      |
| 2.5. Administrative and support service activities     | 0.5             | 1.2                       |

A more detailed analysis showed the activities that registered the highest annual rates and those that registered the greatest decreases in November.

### Activities with the greatest annual rates of the Services Sector turnover

| Activity (Elementary aggregate)            | Original Index | Annual rate (%) |
|--|----------------|-----------------|
| Sale of motor vehicles                     | 76.9           | 8.8             |
| Travel agencies and tour operator services | 63.8           | 7.4             |
| Employment activities                      | 101.7          | 7.3             |
| Accommodation                              | 73.1           | 5.0             |

### Activities with the lowest annual rates of the Services Sector turnover

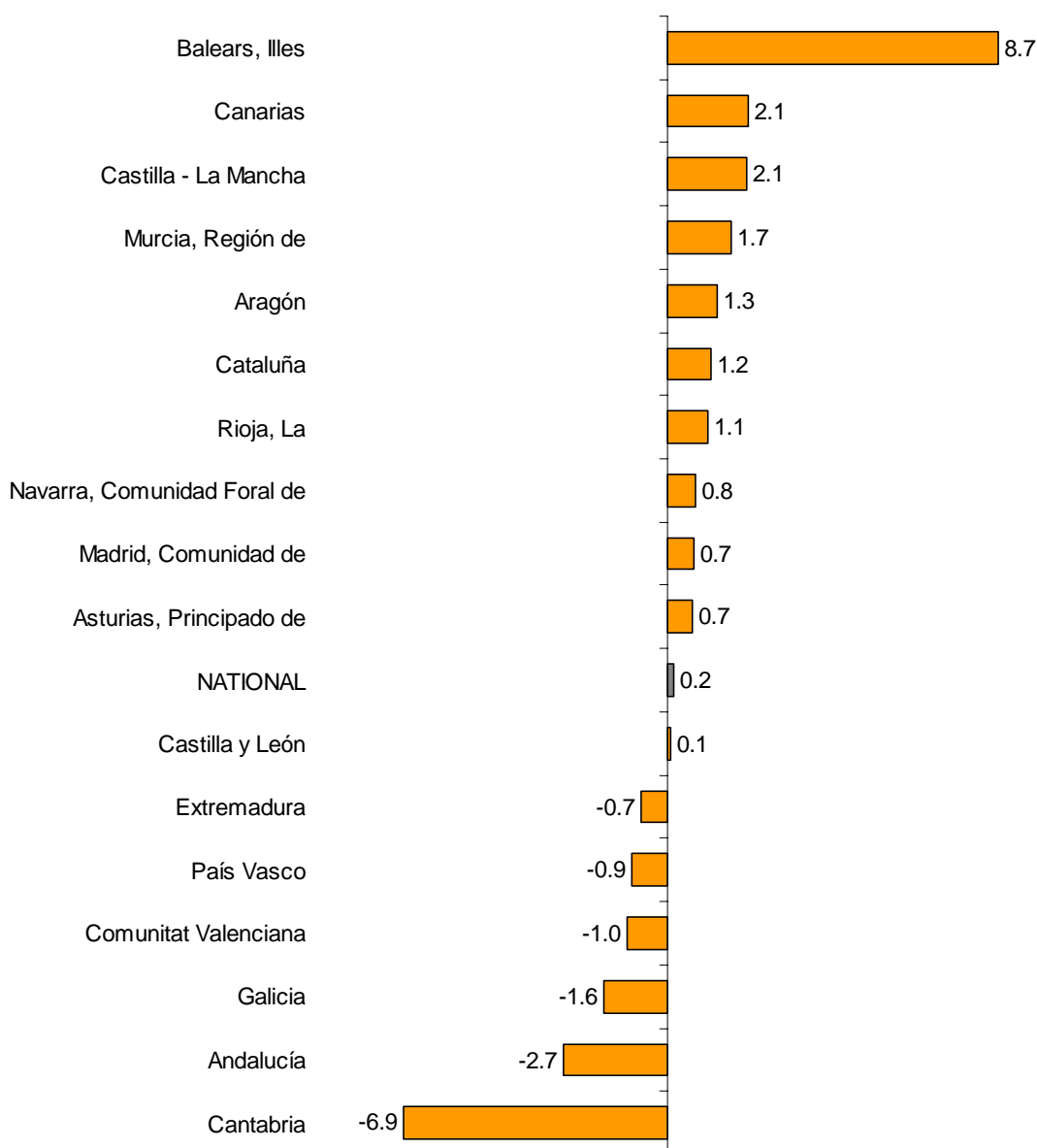
| Activity (Elementary aggregate)                             | Original Index | Annual rate (%) |
|---|----------------|-----------------|
| Other professional scientific and technical activities      | 74.3           | -10.1           |
| Office administrative and other business support activities | 82.6           | -9.2            |
| Post and courier activities                                 | 89.6           | -6.9            |
| Water transport   | 73.0           | -6.4            |

### Results by Autonomous Community. Annual turnover variation rates

In November, 11 Autonomous Communities registered positive annual rates of turnover in the Market Service Sector, being Illes Balears (8.7%), Canarias and Castilla-La Mancha (both with 2.1%) the communities that registered the greatest increases.

In turn, Cantabria (-6.9%), Andalucía (-2.7%) and Galicia (-1.6%) registered the greatest decreases.

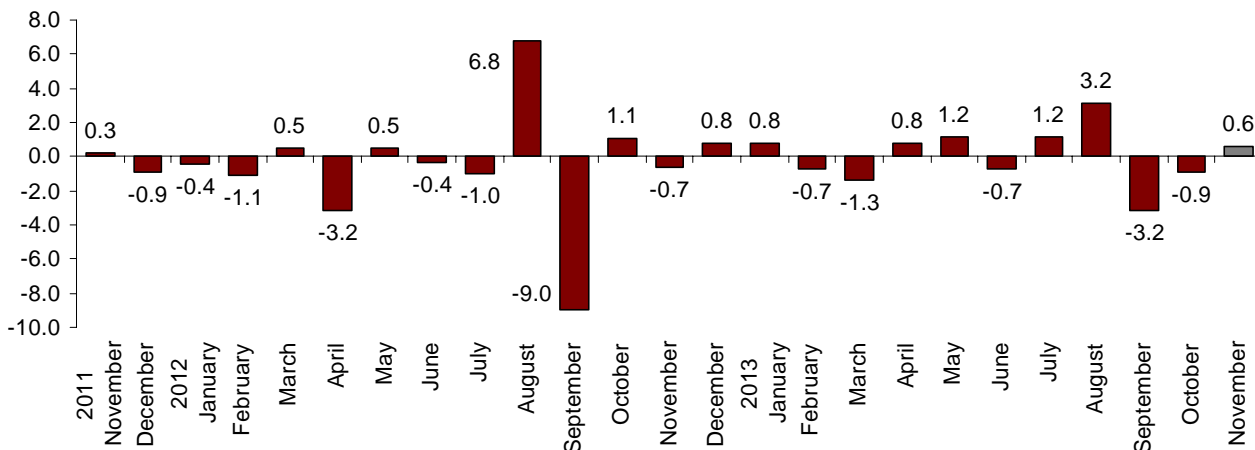
#### General Index by Autonomous Community Turnover Annual Rate



**Monthly evolution of the Services Sector Turnover adjusted for seasonal and calendar effects**

After eliminating the seasonal and calendar effect, the monthly variation of the General Index of Market Services Sector Turnover between November and October stood at 0.6%. This rate was 1.5 points higher than that registered in October.

**General index of the turnover for the Market Services Sector Adjusted for seasonal and calendar effects. Monthly Rate**

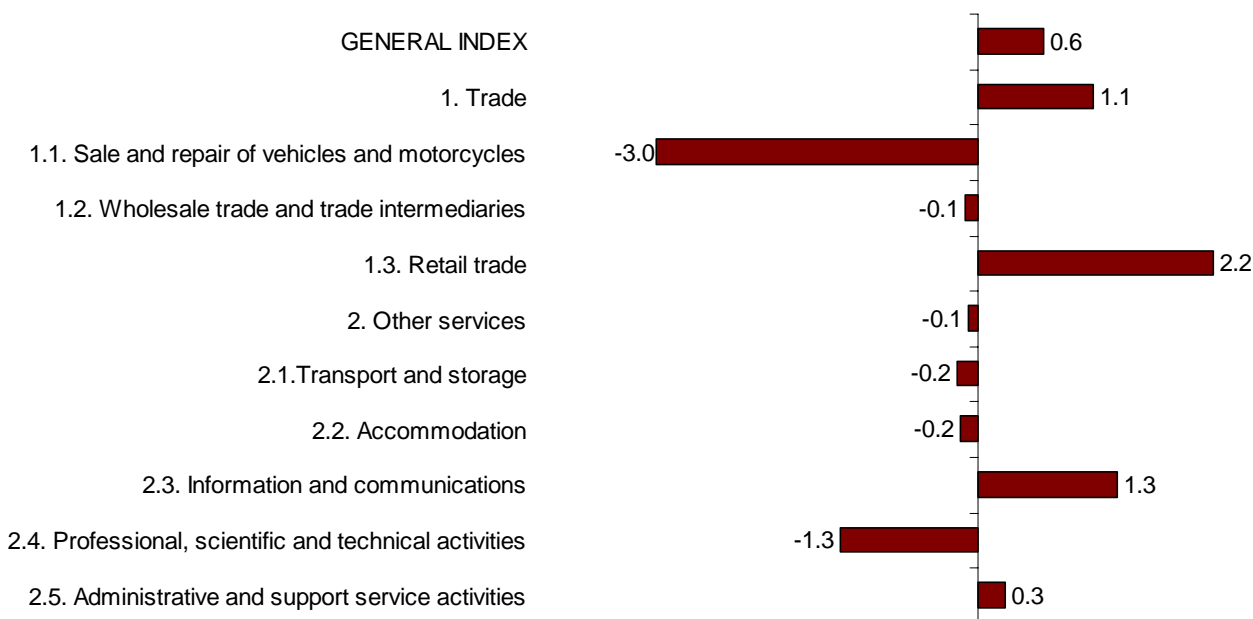


**Monthly evolution of the Turnover by sectors adjusted for seasonal and calendar effects**

After eliminating the seasonal and calendar effect, the monthly variations of *Trade* increased by 1.1% and *Other Services* decreased by 0.1%.

All sectors registered a decrease, except *Retail trade* (2.2%), *Information and communications* (1.3%) and *Administrative and support service activities* (0.3%).

**General and by sectors turnover Index Adjusted for seasonal and calendar effects. Monthly rate**



### Evolution of occupation

Employment in the Market Services Sector experienced a decrease of 0.4% in November, as compared with the same month of previous year. This annual rate was four tenths higher than that registered in October.

The annual variation of *Trade* was -1.4% and that of *Other Services* was 0.2%.

By sector, Administrative and support service activities (1.6%), Accommodation (0.9%) and Professional, scientific and technical activities (0.5%) registered positive annual rates. In turn, *Sale and repair of vehicles and motorcycles* (-3.1%), *Information and communication* (-2.7%) and Retail trade (-1.5%) registered the greatest decreases, as compared with November 2012.

### National Indices of employed personnel by sector

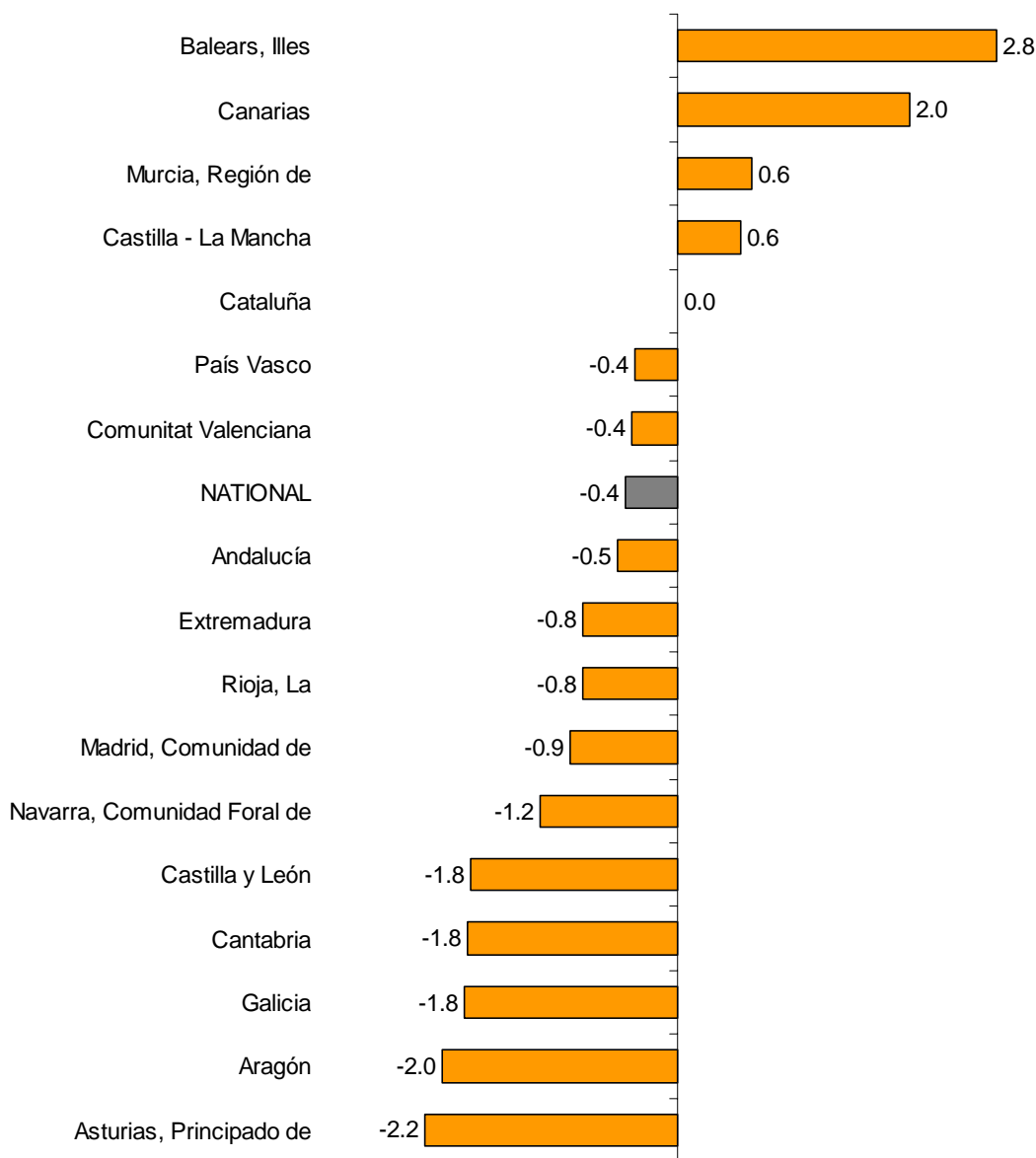
|  | Index | Monthly rate (%) | Annual rate (%) |
|--|-------|------------------|-----------------|
| <b>GENERAL INDEX</b>                                   | 95.0  | -0.7             | -0.4            |
| 1. Trade   | 95.0  | 0.0              | -1.4            |
| 1.1. Sale and repair of vehicles and motorcycles       | 87.1  | -0.2             | -3.1            |
| 1.2. Wholesale trade                                   | 97.4  | 0.4              | -0.8            |
| 1.3. Retail trade                                      | 94.9  | -0.1             | -1.5            |
| 2. Other services                                      | 95.0  | -1.3             | 0.2             |
| 2.1. Transport and storage                             | 93.7  | -0.6             | -1.2            |
| 2.2. Accommodation                                     | 93.7  | -4.5             | 0.9             |
| 2.3. Information and communications                    | 93.3  | 0.1              | -2.7            |
| 2.4. Professional, scientific and technical activities | 95.5  | 0.7              | 0.5             |
| 2.5. Administrative and support service activities     | 97.8  | 0.0              | 1.6             |

**Results by Autonomous Community. Variation rates of occupation**

Four Autonomous Communities registered positive rates in employment, as compared with November 2012. Illes Balears (2.8%), Canarias (2.0%) and Región de Murcia (0.6%) registered the greatest increases.

In turn, Principado de Asturias (-2.2%), Aragón (-2.0%), Galicia, Cantabria and Castilla y León (with -1.8%) registered the greatest decreases in occupation.

**General Index by Autonomous Community  
Annual rate of employed personnel**



## Services Sector Activity Indicators. Base 2010 November 2013

Provisional data

### 1. Monthly turnover indices by sector

|   | Index       | % variation  |             |                      |
|---|-------------|--------------|-------------|----------------------|
|   |             | Monthly      | Annual      | Year-to-date average |
| <b>GENERAL INDEX</b>  | <b>89.9</b> | <b>-5.4</b>  | <b>0.2</b>  | <b>-2.5</b>          |
| <b>1. TRADE</b>   | <b>90.2</b> | <b>-4.3</b>  | <b>0.6</b>  | <b>-2.2</b>          |
| <b>1.1. SALE AND REPAIR OF VEHICLES</b>   | <b>77.7</b> | <b>-5.0</b>  | <b>7.0</b>  | <b>-5.8</b>          |
| - Sale of motor vehicles  | 76.9        | -4.1         | 8.8         | -5.7                 |
| - Maintenance and repair of motor vehicles                                      | 82.3        | -9.6         | -1.7        | -6.1                 |
| <b>1.2. WHOLESALE TRADE AND COMMISSION TRADE</b>                                | <b>92.2</b> | <b>-5.7</b>  | <b>-1.4</b> | <b>-1.4</b>          |
| - Wholesale on a fee or contract basis  | 98.7        | -10.5        | 2.0         | 0.4                  |
| - Wholesale of agricultural raw materials and live animals                      | 106.3       | -5.5         | -4.6        | -0.4                 |
| - Wholesale of food, beverages and tobacco                                      | 90.5        | -2.2         | -5.9        | -0.4                 |
| - Wholesale of household goods  | 97.8        | -7.3         | 1.5         | -0.5                 |
| - Wholesale of information and communication equipment                          | 78.6        | -5.0         | 3.7         | -1.2                 |
| - Wholesale of other machinery, equipment and supplies                          | 88.2        | -7.4         | -4.9        | -7.5                 |
| - Other specialised wholesale trade   | 92.1        | -6.8         | 1.2         | -1.7                 |
| - Non-specialised wholesale trade   | 96.5        | -5.6         | -1.2        | -3.4                 |
| <b>1.3. RETAIL TRADE</b>  | <b>90.5</b> | <b>-1.8</b>  | <b>2.4</b>  | <b>-2.6</b>          |
| <b>2. OTHER SERVICES</b>  | <b>89.1</b> | <b>-7.4</b>  | <b>-0.5</b> | <b>-2.9</b>          |
| <b>2.1. TRANSPORTATION AND STORAGE SERVICES</b>                                 | <b>96.7</b> | <b>-7.8</b>  | <b>-0.3</b> | <b>-0.7</b>          |
| Land transport  | 95.1        | -5.9         | 0.5         | -1.7                 |
| - Rail transport  | 92.9        | -14.1        | 3.9         | 1.8                  |
| - Taxi operation  | 93.7        | -7.1         | 0.6         | -1.7                 |
| - Other passenger land transport  | 92.3        | -12.6        | -5.1        | -6.2                 |
| - Freight transport by road and removal services                                | 96.1        | -3.5         | 1.4         | -1.1                 |
| Water transport   | 73.0        | -7.7         | -6.4        | -11.5                |
| Air transport   | 88.5        | -15.6        | 0.3         | -1.6                 |
| Warehousing and support activities for transportation                           | 103.4       | -8.0         | -0.3        | 1.3                  |
| Post and courier activities   | 89.6        | -8.8         | -6.9        | -3.7                 |
| <b>2.2. ACCOMMODATION AND FOOD SERVICES ACTIVITIES</b>                          | <b>81.0</b> | <b>-14.8</b> | <b>3.4</b>  | <b>-0.3</b>          |
| Accommodation   | 73.1        | -31.5        | 5.0         | 2.7                  |
| Food and beverage service activities  | 84.9        | -7.0         | 2.8         | -1.7                 |
| <b>2.3. INFORMATION AND COMMUNICATION</b>                                       | <b>90.5</b> | <b>-0.2</b>  | <b>-2.3</b> | <b>-5.6</b>          |
| Publishing activities   | 83.5        | -3.4         | -4.1        | -5.6                 |
| Motion picture, television programme production and music publishing activities | 93.2        | 2.2          | 1.9         | -11.6                |
| Programming and broadcasting activities   | 98.0        | 1.4          | 1.8         | -1.5                 |
| Telecommunications  | 80.4        | 2.9          | -4.6        | -7.9                 |
| Computer programming, consultancy and related activities                        | 108.9       | -3.4         | 0.1         | -1.7                 |
| Information service activities  | 98.9        | -6.0         | -6.4        | -7.2                 |
| <b>2.4. PROFESSIONAL, SCIENTIFIC AND TECHNICAL ACTIVITIES</b>                   | <b>91.1</b> | <b>-5.0</b>  | <b>-1.9</b> | <b>-4.4</b>          |
| Legal, accounting and management consulting activities                          | 93.7        | -9.5         | -1.0        | -2.0                 |
| Architectural and engineering activities; technical testing and analysis        | 91.5        | -1.9         | 1.7         | -5.2                 |
| Advertising and market research   | 90.8        | 1.3          | -5.9        | -6.5                 |
| Other professional scientific and technical activities                          | 74.3        | -17.4        | -10.1       | -7.4                 |
| <b>2.5. ADMINISTRATIVE AND SUPPORT SERVICE ACTIVITIES</b>                       | <b>81.7</b> | <b>-13.2</b> | <b>0.5</b>  | <b>-3.8</b>          |
| Employment activities   | 101.7       | -5.1         | 7.3         | 3.1                  |
| Travel agencies and tour operator services                                      | 63.8        | -28.8        | 7.4         | -3.8                 |
| Security and investigation activities   | 92.9        | -3.2         | -1.9        | -1.8                 |
| Cleaning activities   | 95.9        | -0.8         | 0.8         | -2.0                 |
| Office administrative and other business support activities                     | 82.6        | -6.3         | -9.2        | -9.2                 |

## 2. National turnover indices, adjusted for the calendar effect

|  | Adjusted index | % variation |            |                      |
|--|----------------|-------------|------------|----------------------|
|  |                | Monthly     | Annual     | Year-to-date average |
| <b>GENERAL INDEX</b>                                   | <b>90.9</b>    | <b>-2.6</b> | <b>1.6</b> | <b>-2.2</b>          |
| 1. Trade   | 91.4           | -0.8        | 2.3        | -2.0                 |
| 1.1. Sale and repair of vehicles                       | 77.3           | -4.6        | 7.0        | -5.3                 |
| 1.2. Wholesale trade                                   | 93.8           | -1.2        | 0.7        | -1.2                 |
| 1.3. Retail trade                                      | 90.1           | -1.7        | 2.4        | -2.5                 |
| 2. Other Services                                      | 89.7           | -5.8        | 0.3        | -2.7                 |
| 2.1. Transportation and storage                        | 97.8           | -5.0        | 1.1        | -0.5                 |
| 2.2. Accommodation and food service activities         | 80.7           | -15.7       | 2.9        | -0.1                 |
| 2.3. Information and communication                     | 91.2           | 1.9         | -1.3       | -5.5                 |
| 2.4. Professional, scientific and technical activities | 91.7           | -3.3        | -1.1       | -4.5                 |
| 2.5. Administrative and support service activities     | 82.1           | -11.9       | 1.2        | -3.6                 |

## 3. National turnover indices, adjusted for seasonal effects and by calendar

|  | index       | % variation |            |                      |
|--|-------------|-------------|------------|----------------------|
|  |             | Monthly     | Annual     | Year-to-date average |
| <b>GENERAL INDEX</b>                                   | <b>91.1</b> | <b>0.6</b>  | <b>1.6</b> | <b>-2.3</b>          |
| 1. Trade   | 90.6        | 1.1         | 2.2        | -2.1                 |
| 1.1. Sale and repair of vehicles                       | 74.9        | -3.0        | 6.9        | -5.7                 |
| 1.2. Wholesale trade                                   | 91.5        | -0.1        | 0.9        | -1.3                 |
| 1.3. Retail trade                                      | 93.2        | 2.2         | 2.3        | -2.5                 |
| 2. Other Services                                      | 91.8        | -0.1        | 0.3        | -2.8                 |
| 2.1. Transportation and storage                        | 98.7        | -0.2        | 1.3        | -0.6                 |
| 2.2. Accommodation and food service activities         | 94.3        | -0.2        | 2.9        | -0.5                 |
| 2.3. Information and communication                     | 88.8        | 1.3         | -1.6       | -5.5                 |
| 2.4. Professional, scientific and technical activities | 87.6        | -1.3        | -1.0       | -4.6                 |
| 2.5. Administrative and support service activities     | 91.8        | 0.3         | 1.2        | -3.7                 |



#### 4. National turnover indices Seasonally adjusted

|      |      | % variation         |                        |                      |
|------|------|---------------------|------------------------|----------------------|
|      |      | Annual <sup>1</sup> | Quarterly <sup>2</sup> | Monthly <sup>3</sup> |
|      | 2009 | -13.5               |                        |                      |
|      | 2010 | 0.8                 |                        |                      |
|      | 2011 | -1.0                |                        |                      |
|      | 2012 | -6.1                |                        |                      |
|      | 2013 | -2.3                |                        |                      |
| 2011 | TIV  | -2.6                | -1.8                   |                      |
| 2012 | TI   | -4.3                | -1.5                   |                      |
|      | TII  | -6.8                | -3.0                   |                      |
|      | TIII | -6.0                | 0.2                    |                      |
|      | TIV  | -7.3                | -3.2                   |                      |
| 2013 | TI   | -5.7                | 0.2                    |                      |
|      | TII  | -2.5                | 0.2                    |                      |
|      | TIII | -0.7                | 2.1                    |                      |
|      | TIV  | 0.9                 | -1.7                   |                      |
| 2012 | NOV  | -8.1                |                        | -0.7                 |
|      | DEC  | -6.5                |                        | 0.8                  |
| 2013 | JAN  | -5.4                |                        | 0.8                  |
|      | FEB  | -5.0                |                        | -0.7                 |
|      | MAR  | -6.7                |                        | -1.3                 |
|      | APR  | -2.9                |                        | 0.8                  |
|      | MAY  | -2.2                |                        | 1.2                  |
|      | JUN  | -2.5                |                        | -0.7                 |
|      | JUL  | -0.4                |                        | 1.2                  |
|      | AUG  | -3.8                |                        | 3.2                  |
|      | SEP  | 2.3                 |                        | -3.2                 |
|      | OCT  | 0.3                 |                        | -0.9                 |
|      | NOV  | 1.6                 |                        | 0.6                  |

Note:

<sup>1</sup> **Annual rate:** Variation of a period over the same period of the previous year

<sup>2</sup> **Quarterly rate:** Variation of a quarter over the previous quarter. In the current quarter it is the average to date over the previous quarter

<sup>3</sup> **Monthly rate:** Variation of a month over the previous month

## 5. National employed personnel indices by branch of activity

|   | Index       | % variation |             |                      |
|---|-------------|-------------|-------------|----------------------|
|   |             | Monthly     | Annual      | Year-to-date average |
| <b>GENERAL INDEX</b>  | <b>95.0</b> | <b>-0.7</b> | <b>-0.4</b> | <b>-1.5</b>          |
| 1. TRADE  | 95.0        | 0.0         | -1.4        | -2.0                 |
| 1.1. SALE AND REPAIR OF VEHICLES  | 87.1        | -0.2        | -3.1        | -4.0                 |
| - Sale of motor vehicles  | 83.4        | -0.5        | -4.6        | -5.5                 |
| - Maintenance and repair of motor vehicles                                      | 91.1        | 0.1         | -1.5        | -2.4                 |
| 1.2. WHOLESALE TRADE AND COMMISSION TRADE                                       | 97.4        | 0.4         | -0.8        | -1.5                 |
| - Wholesale on a fee or contract basis  | 97.6        | -0.2        | 1.0         | -1.1                 |
| - Wholesale of agricultural raw materials and live animals                      | 99.5        | -1.0        | -0.9        | -1.2                 |
| - Wholesale of food, beverages and tobacco                                      | 108.5       | 2.5         | 0.2         | -0.1                 |
| - Wholesale of household goods  | 93.2        | -1.0        | -1.8        | -1.3                 |
| - Wholesale of information and communication equipment                          | 94.5        | -0.1        | -1.2        | -2.0                 |
| - Wholesale of other machinery, equipment and supplies                          | 91.2        | -1.0        | -0.7        | -2.3                 |
| - Other specialised wholesale trade   | 89.3        | -0.1        | -2.2        | -3.5                 |
| - Non-specialised wholesale trade   | 91.6        | -0.8        | -7.1        | -6.3                 |
| 1.3. RETAIL TRADE   | 94.9        | -0.1        | -1.5        | -1.9                 |
| 2. OTHER SERVICES   | 95.0        | -1.3        | 0.2         | -1.2                 |
| 2.1. TRANSPORTATION AND STORAGE SERVICES  | 93.7        | -0.6        | -1.2        | -2.1                 |
| Land transport  | 94.4        | -0.3        | -0.5        | -1.7                 |
| - Rail transport  | 99.0        | 0.3         | -0.3        | -0.6                 |
| - Taxi operation  | 95.3        | -2.1        | -2.4        | -1.9                 |
| - Other passenger land transport  | 96.2        | -1.3        | -1.9        | -1.9                 |
| - Freight transport by road and removal services                                | 93.4        | 0.3         | 0.3         | -1.6                 |
| Water transport   | 83.6        | -8.2        | 0.5         | -3.8                 |
| Air transport   | 87.9        | -1.5        | -7.1        | -5.1                 |
| Warehousing and support activities for transportation                           | 95.4        | -1.3        | -1.4        | -2.0                 |
| Post and courier activities   | 88.8        | 0.5         | -3.0        | -3.9                 |
| 2.2. ACCOMMODATION AND FOOD SERVICES ACTIVITIES                                 | 93.7        | -4.5        | 0.9         | -0.2                 |
| Accommodation   | 82.1        | -15.5       | 1.1         | -0.7                 |
| Food and beverage service activities  | 97.1        | -1.6        | 0.9         | 0.0                  |
| 2.3. INFORMATION AND COMMUNICATION  | 93.3        | 0.1         | -2.7        | -3.4                 |
| Publishing activities   | 82.8        | -0.1        | -4.1        | -5.8                 |
| Motion picture, television programme production and music publishing activities | 73.3        | -4.2        | -11.8       | -11.7                |
| Programming and broadcasting activities   | 88.1        | 0.2         | -3.8        | -6.7                 |
| Telecommunications  | 87.4        | -0.2        | -4.4        | -4.7                 |
| Computer programming, consultancy and related activities                        | 101.9       | 0.6         | -0.7        | -1.0                 |
| Information service activities  | 95.8        | 0.8         | -3.1        | -3.2                 |
| 2.4. PROFESSIONAL, SCIENTIFIC AND TECHNICAL ACTIVITIES                          | 95.5        | 0.7         | 0.5         | -1.4                 |
| Legal, accounting and management consulting activities                          | 98.0        | 0.1         | 0.2         | -0.4                 |
| Architectural and engineering activities; technical testing and analysis        | 92.4        | 1.7         | 1.3         | -2.2                 |
| Advertising and market research   | 91.3        | 1.1         | -2.8        | -4.3                 |
| Other professional scientific and technical activities                          | 96.5        | 0.1         | 2.0         | -0.8                 |
| 2.5. ADMINISTRATIVE AND SUPPORT SERVICE ACTIVITIES                              | 97.8        | 0.0         | 1.6         | -0.8                 |
| Employment activities   | 111.2       | 0.8         | 7.1         | 3.0                  |
| Travel agencies and tour operator services                                      | 87.5        | -1.8        | -2.0        | -3.9                 |
| Security and investigation activities   | 91.9        | -0.8        | -2.6        | -3.1                 |
| Cleaning activities   | 95.5        | -0.4        | 1.5         | -0.9                 |
| Office administrative and other business support activities                     | 98.4        | 1.0         | 0.5         | -1.5                 |

## 6. General turnover index by Autonomous Community

|                             | Index       | % variation |            |                      |
|-----------------------------|-------------|-------------|------------|----------------------|
|                             |             | Monthly     | Annual     | Year-to-date average |
| <b>NATIONAL INDEX</b>       | <b>89.9</b> | <b>-5.4</b> | <b>0.2</b> | <b>-2.5</b>          |
| Andalucía                   | 87.3        | -2.0        | -2.7       | -3.2                 |
| Aragón                      | 92.4        | -7.4        | 1.3        | -1.2                 |
| Asturias, Principado de     | 84.1        | -5.0        | 0.7        | -3.4                 |
| Balears, Illes              | 71.7        | -27.3       | 8.7        | 5.5                  |
| Canarias                    | 96.5        | -2.1        | 2.1        | -1.6                 |
| Cantabria                   | 82.5        | -5.1        | -6.9       | -7.2                 |
| Castilla y León             | 92.2        | -7.6        | 0.1        | -1.0                 |
| Castilla-La Mancha          | 88.2        | -8.1        | 2.1        | -3.0                 |
| Cataluña                    | 92.2        | -6.8        | 1.2        | -2.4                 |
| Comunitat Valenciana        | 92.1        | -4.6        | -1.0       | -2.6                 |
| Extremadura                 | 83.1        | -9.3        | -0.7       | -4.6                 |
| Galicia                     | 91.4        | -7.9        | -1.6       | -3.1                 |
| Madrid, Comunidad de        | 89.6        | -3.7        | 0.7        | -2.6                 |
| Murcia, Región de           | 90.3        | -2.8        | 1.7        | 0.0                  |
| Navarra, Comunidad Foral de | 87.4        | -6.2        | 0.8        | -4.9                 |
| País Vasco                  | 90.4        | -3.1        | -0.9       | -3.9                 |
| Rioja, La                   | 90.8        | -9.4        | 1.1        | 0.6                  |

## 7. General employed personnel index by Autonomous Community

|                             | Index       | % variation |             |                      |
|-----------------------------|-------------|-------------|-------------|----------------------|
|                             |             | Monthly     | Annual      | Year-to-date average |
| <b>NATIONAL INDEX</b>       | <b>95.0</b> | <b>-0.7</b> | <b>-0.4</b> | <b>-1.5</b>          |
| Andalucía                   | 94.3        | -0.5        | -0.5        | -1.4                 |
| Aragón                      | 92.3        | -0.6        | -2.0        | -2.3                 |
| Asturias, Principado de     | 90.9        | -1.3        | -2.2        | -3.2                 |
| Balears, Illes              | 87.5        | -16.7       | 2.8         | 2.9                  |
| Canarias                    | 97.8        | 0.6         | 2.0         | -0.7                 |
| Cantabria                   | 93.8        | -1.2        | -1.8        | -2.3                 |
| Castilla y León             | 93.8        | -0.9        | -1.8        | -3.0                 |
| Castilla-La Mancha          | 93.3        | -1.1        | 0.6         | -0.3                 |
| Cataluña                    | 96.0        | -0.9        | 0.0         | -1.3                 |
| Comunitat Valenciana        | 98.0        | 1.1         | -0.4        | -0.9                 |
| Extremadura                 | 94.5        | -0.4        | -0.8        | -1.8                 |
| Galicia                     | 93.8        | -0.6        | -1.8        | -2.4                 |
| Madrid, Comunidad de        | 94.6        | 0.0         | -0.9        | -2.5                 |
| Murcia, Región de           | 96.7        | 0.0         | 0.6         | -0.2                 |
| Navarra, Comunidad Foral de | 95.4        | -0.7        | -1.2        | -2.9                 |
| País Vasco                  | 97.1        | 0.2         | -0.4        | -1.0                 |
| Rioja, La                   | 97.0        | 0.4         | -0.8        | -2.3                 |