

Business Confidence Indicators (BCI)
Second quarter of 2013

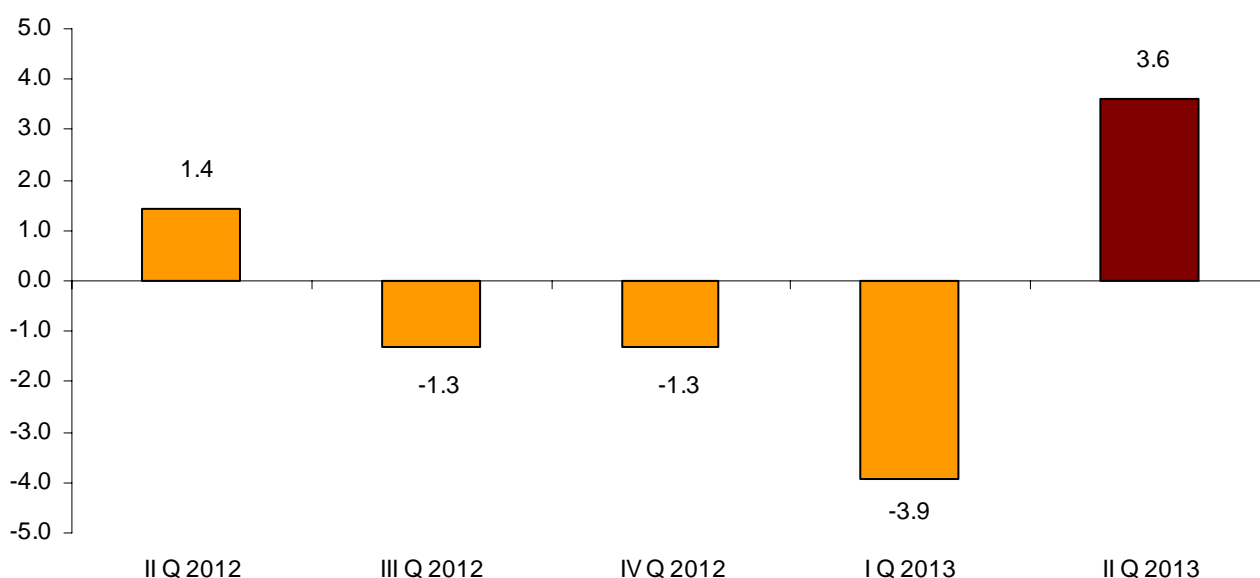
The Business Confidence Index (BCI) registers a rise of 3.6 points, as compared with the first quarter of 2013

The INE publishes for the first time the HBCI by activity sectors and by size of the establishments

Evolution of the Harmonised Business Confidence Index. HBCI

In the second quarter of 2013, the Harmonised Business Confidence Index (HBCI) registered a rise of 3.6 points, as compared with the previous quarter, showing an increase in the business confidence.

Harmonised Business Confidence Index (HBCI)
Quarter-on-quarter rate



Opinions regarding the coming quarter (Expectations)

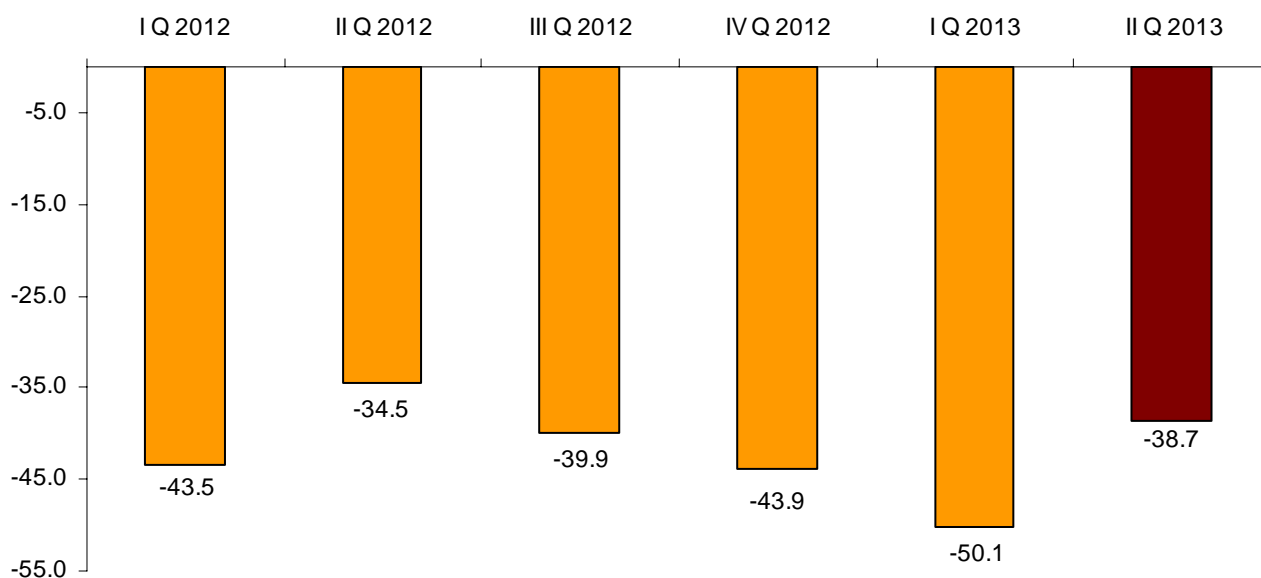
8.3% of the establishments' managers considered that the performance of their business during the second quarter of the year would be favourable, whereas 47.0% considered that it would be unfavourable. The remaining 44.7% considered that it would be normal.

The difference between the percentages of favourable and unfavourable responses, known as *Expectations Balance*, stood at -38.7 points for Spain as a whole, as compared with -50.1 of the previous quarter.

Opinions regarding the coming quarter (Expectations)

Period	Favourable (%) (optimistic)	Normal (%)	Unfavourable (%) (pessimistic)	Balance (optimistic - pessimistic)
2012 I Quarter	6.3	43.9	49.8	-43.5
II Quarter	8.4	48.7	42.9	-34.5
III Quarter	7.3	45.5	47.2	-39.9
IV Quarter	6.2	43.7	50.1	-43.9
2013 I Quarter	5.8	38.2	56.0	-50.1
II Quarter	8.3	44.7	47.0	-38.7

Evolution of the Expectations Balance



Opinions regarding the last quarter (Situation)

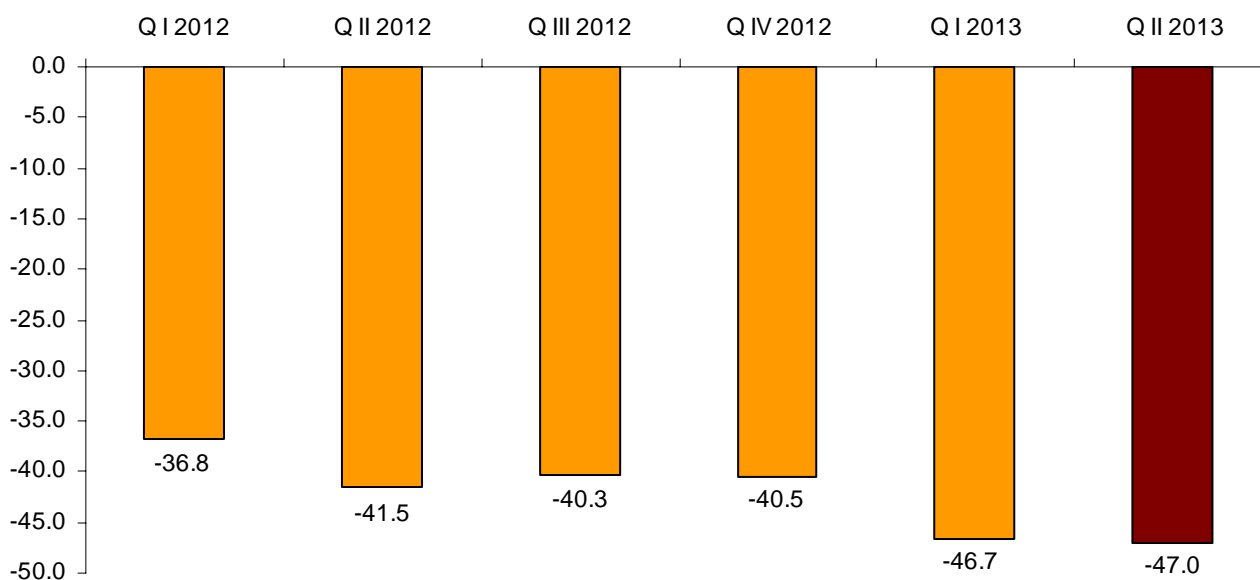
6.1% of the establishments' managers expressed a favourable opinion regarding the performance of their business in the first quarter of 2013. In turn, 53.1% had an unfavourable opinion.

The difference between these percentages of favourable and unfavourable responses referring to the last quarter, known as *Situation Balance*, stood at -47.0 points, thereby improving the *Expectations* previously expressed for that first quarter, which stood at -50.1 points.

Opinions regarding the last quarter (Situation)

Period	Favourable (%) (optimistic)	Normal (%)	Unfavourable (%) (pessimistic)	Balance (optimistic - pessimistic)
2012 I Quarter	8.9	45.4	45.7	-36.8
II Quarter	6.7	45.1	48.2	-41.5
III Quarter	7.1	45.5	47.4	-40.3
IV Quarter	7.3	44.9	47.8	-40.5
2013 I Quarter	6.9	39.5	53.6	-46.7
II Quarter	6.1	40.8	53.1	-47.0

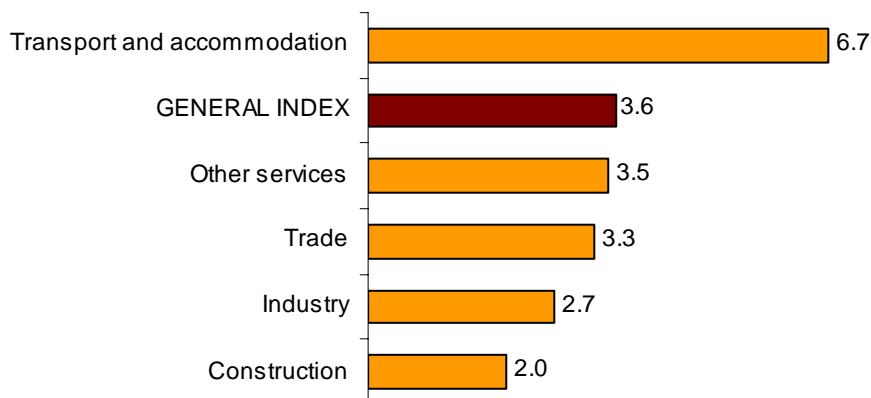
Evolution of the Situation Balance



Harmonised Business Confidence Index by activity sector

The five activity sectors analysed presented an improvement on the confidence, as compared with the first quarter of 2013. *Transport and accommodation* registered the greatest increase, with a rise of 6.7 points.

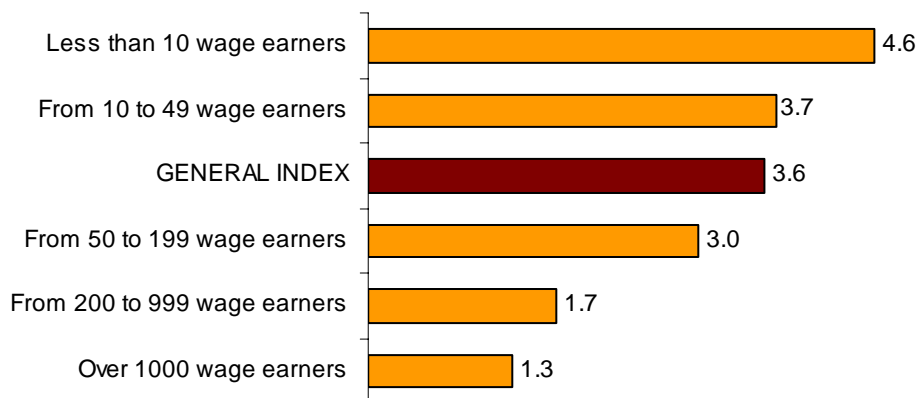
Quarter-on-quarter rate of the HBCI General index and by activity sectors



Harmonised Business Confidence Index by size of the establishments

The five activity sectors analysed presented an improvement, as compared with the first quarter of 2013. The greatest rise was registered in establishments with less than 10 wage earners (4.6 points).

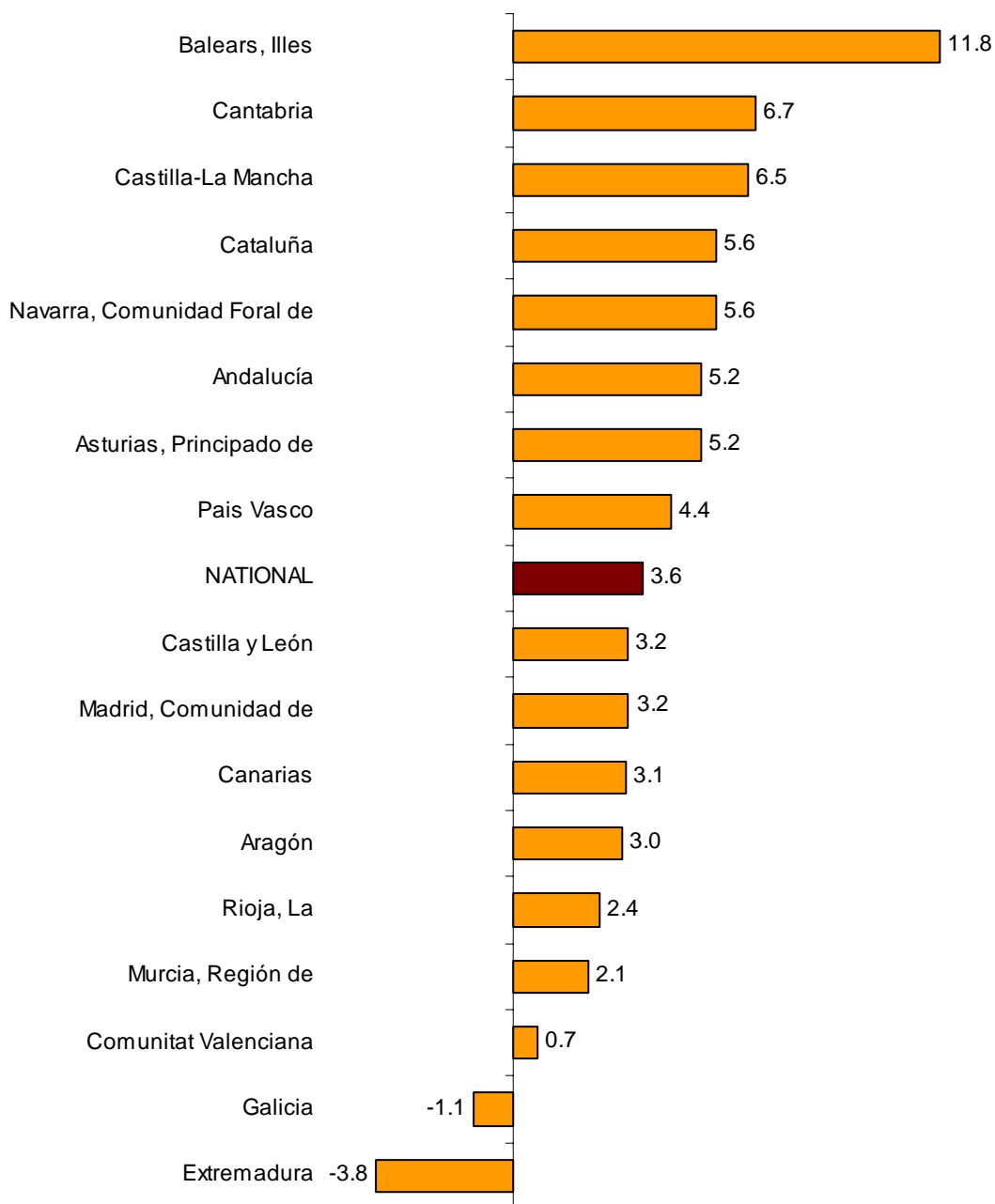
Quarter-on-quarter rate of the HBCI General index and by size of the establishments



Harmonised Business Confidence Index. Results by Autonomous Community

The Business Confidence Index improved in 15 Autonomous Communities, as compared with the first quarter of 2013. Illes Balears (11.8%), Cantabria (6.7%) and Castilla-La Mancha (6.5%) registered the greatest increases. In turn, Extremadura (-3.8%) and Galicia (-1.1%) are the only Autonomous Communities where the Business Confidence decreased.

**Quarter-on-quarter rate of HBCI
General Index and by Autonomous Community**



Methodological note

The survey on which the BCIs are based is the first opinion poll conducted by the INE, and it is prepared based on a representative sample of 7,694 establishments, whose opinions began to be collected for the first quarter of 2012. The population scope of the survey is comprised of all those establishments whose main activity is included in the following sections of CNAE-2009: B to N (inclusive, except division 70), R (only divisions 92 and 93) and S (only divisions 95 and 96).

The BCIs gather the opinions of the establishment managers regarding the performance of their business for each last quarter, and regarding their expectations for each coming quarter. The methodology is based on the Japanese **TANKAN** index. In other words, there are no weightings or elevations according to the characteristics of the establishments, as the opinion of each respondent carries the same weight.

The BCIs are compiled and published quarterly. They consider three different indicators, both on a national level and by Autonomous Community (in the latter case, the data will be available as of the year 2013). These three indicators are based on this question from the questionnaire:

1. How would you assess the performance of the business in your establishment?

	Favourable	Normal	Unfavourable
1. In the quarter that is ending?	<input type="checkbox"/>	<input type="checkbox"/>	<input type="checkbox"/>
2. In the quarter that is commencing?	<input type="checkbox"/>	<input type="checkbox"/>	<input type="checkbox"/>

The **Harmonised Expectation Indicator** (known as the **Expectations**) includes the difference or balance between the percentages of favourable and unfavourable responses with regard to the coming quarter. It can fluctuate between -100 (all of the respondents are pessimistic - that is, they have marked the *Unfavourable* box - regarding the coming quarter) and +100 (all of the respondents are optimistic - that is, they have marked the *Favourable* box-).

An intuitive interpretation thereof is simple and direct. If the *Expectations* are positive, the optimists exceed the pessimists with regard to the coming quarter.

In turn, the **Harmonised Situation Indicator** (known as the **Situation**) is the difference or balance between the percentages of favourable and unfavourable responses with regard to the quarter that is ending.

The **Harmonised Business Confidence Index** (HBCI) is built using the *Situation* and the *Expectations*. The base for this index is the first quarter of 2012, and the value of that first quarter is therefore equal to 100.

Business Confidence Indicators Second quarter of 2013

Provisional data

9 April 2013

1. Harmonized Business Confidence Index by sectors

Period	TOTAL	Industry	Construction	Trade	Transport and accommodation	Other Services
2013 I Quarter	100.0	100.0	100.0	100.0	100.0	100.0
II Quarter	103.6	102.7	102.0	103.3	106.7	103.5

2. Harmonized Business Confidence Index by size

Period	TOTAL	Less than 10 wage earners	From 10 to 49 wage earners	From 50 to 199 wage earners	From 200 to 999 wage earners	Over 1000 wage earners
2013 I Quarter	100.0	100.0	100.0	100.0	100.0	100.0
II Quarter	103.6	104.6	103.7	103.0	101.7	101.3

3. Harmonized Business Confidence Index by Autonomous Communities

Period	NATIONAL	Andalucía	Aragón	Asturias, Principado de	Balears, Illes	Canarias
2013 I Quarter	100.0	100.0	100.0	100.0	100.0	100.0
II Quarter	103.6	105.2	103.0	105.2	111.8	103.1

Period	Cantabria	Castilla y León	Castilla- La Mancha	Cataluña	Comunitat Valenciana	Extremadura
2013 I Quarter	100.0	100.0	100.0	100.0	100.0	100.0
II Quarter	106.7	103.2	106.5	105.6	100.7	96.2

Period	Galicia	Madrid, Comunidad de	Murcia, Región de	Navarra, Comunidad Foral	País Vasco	Rioja, La
2013 I Quarter	100.0	100.0	100.0	100.0	100.0	100.0
II Quarter	98.9	103.2	102.1	105.6	104.4	102.4

4. Opinions regarding the coming quarter (Expectations) by sectors

Activity sectors	Favourable (%) (optimistic)	Normal (%)	Unfavourable (%) (pessimistic)	Balance (optimistic - pessimistic)
TOTAL	8.3	44.7	47.0	-38.7
Industry	10.9	47.4	41.7	-30.8
Construction	5.2	33.4	61.4	-56.2
Trade	7.2	41.1	51.7	-44.5
Transport and accommodation	8.8	43.5	47.7	-38.9
Other services	8.5	49.4	42.1	-33.6

5. Opinions regarding the coming quarter (Expectations) by size

Size of the establishment	Favourable (%) (optimistic)	Normal (%)	Unfavourable (%) (pessimistic)	Balance (optimistic - pessimistic)
TOTAL	8.3	44.7	47.0	-38.7
Less than 10 wage earners	7.8	37.9	54.3	-46.5
From 10 to 49 wage earners	8.4	43.4	48.2	-39.8
From 50 to 199 wage earners	9.1	50.9	40.0	-30.9
From 200 to 999 wage earners	9.0	58.1	32.9	-23.9
Over 1000 wage earners	8.5	63.1	28.4	-19.9

6. Opinions regarding the coming quarter (Expectations) by Autonomous Communities

	Favourable (%) (optimistic)	Normal (%)	Unfavourable (%) (pessimistic)	Balance (optimistic - pessimistic)
NATIONAL	8.3	44.7	47.0	-38.7
Andalucía	10.5	40.9	48.6	-38.1
Aragón	3.8	45.7	50.5	-46.7
Asturias, Principado de	8.2	40.6	51.2	-43.0
Balears, Illes	13.4	48.8	37.8	-24.4
Canarias	7.2	47.1	45.7	-38.5
Cantabria	5.1	40.5	54.4	-49.3
Castilla y León	9.1	35.6	55.3	-46.2
Castilla- La Mancha	5.3	42.1	52.6	-47.3
Cataluña	9.6	47.2	43.2	-33.6
Comunitat Valenciana	7.8	49.3	42.9	-35.1
Extremadura	4.5	38.1	57.4	-52.9
Galicia	7.0	42.2	50.8	-43.8
Madrid, Comunidad de	9.1	52.4	38.5	-29.4
Murcia, Región de	10.4	46.8	42.8	-32.4
Navarra, Comunidad Foral de	9.9	43.5	46.6	-36.7
País Vasco	10.5	44.6	44.9	-34.4
Rioja, La	7.0	44.8	48.2	-41.2

7. Opinions regarding the last quarter (Situation) by sectors

Activity sectors	Favourable (%) (optimistic)	Normal (%)	Unfavourable (%) (pessimistic)	Balance (optimistic - pessimistic)
TOTAL	6.1	40.8	53.1	-47.0
Industry	9.5	43.3	47.2	-37.7
Construction	4.4	32.0	63.6	-59.2
Trade	4.4	34.7	60.9	-56.5
Transport and accommodation	5.8	36.5	57.7	-51.9
Other services	5.9	47.6	46.5	-40.6

8. Opinions regarding the last quarter (Situation) by size

Size of the establishment	Favourable (%) (optimistic)	Normal (%)	Unfavourable (%) (pessimistic)	Balance (optimistic - pessimistic)
TOTAL	6.1	40.8	53.1	-47.0
Less than 10 wage earners	4.5	33.9	61.6	-57.1
From 10 to 49 wage earners	6.1	39.7	54.2	-48.1
From 50 to 199 wage earners	7.9	46.3	45.8	-37.9
From 200 to 999 wage earners	8.8	54.4	36.8	-28.0
Over 1000 wage earners	8.5	61.6	29.9	-21.4

9. Opinions regarding the last quarter (Situation) by Autonomous Communities

	Favourable (%) (optimistic)	Normal (%)	Unfavourable (%) (pessimistic)	Balance (optimistic - pessimistic)
NATIONAL	6.1	40.8	53.1	-47.0
Andalucía	6.7	39.0	54.3	-47.6
Aragón	4.5	41.5	54.0	-49.5
Asturias, Principado de	6.2	37.4	56.4	-50.2
Balears, Illes	6.3	41.7	52.0	-45.7
Canarias	10.2	43.1	46.7	-36.5
Cantabria	5.4	38.5	56.1	-50.7
Castilla y León	5.9	31.7	62.4	-56.5
Castilla- La Mancha	2.0	38.8	59.2	-57.2
Cataluña	7.9	41.1	51.0	-43.1
Comunitat Valenciana	8.3	44.5	47.2	-38.9
Extremadura	2.8	32.9	64.3	-61.5
Galicia	4.7	39.6	55.7	-51.0
Madrid, Comunidad de	5.0	48.6	46.4	-41.4
Murcia, Región de	6.5	44.6	48.9	-42.4
Navarra, Comunidad Foral de	5.3	44.4	50.3	-45.0
País Vasco	7.8	39.8	52.4	-44.6
Rioja, La	6.3	37.7	56.0	-49.7