

Harmonised Labour Cost Index (HLCI). Base 2008
Fourth quarter of 2012. *Provisional data*

The cost per hour worked decreases 3.1% in the fourth quarter of 2012, with regard to the same period of 2011

The labour cost decreases its rate by 3.1% after adjusting for calendar and seasonal effects

The cost per hour worked decreased 3.1% in the fourth quarter of 2012, as compared with the same period the previous year. After adjusting the calendar and seasonal effects, the cost per hour worked showed the same negative rate.

On the other hand, the provisional data for the Harmonised Labour Cost Index corresponding to the third quarter of 2012 was reviewed, with the final index standing at 111.7 points. Adjusted for calendar and seasonal effects, the growth rate stood at 0.5%.

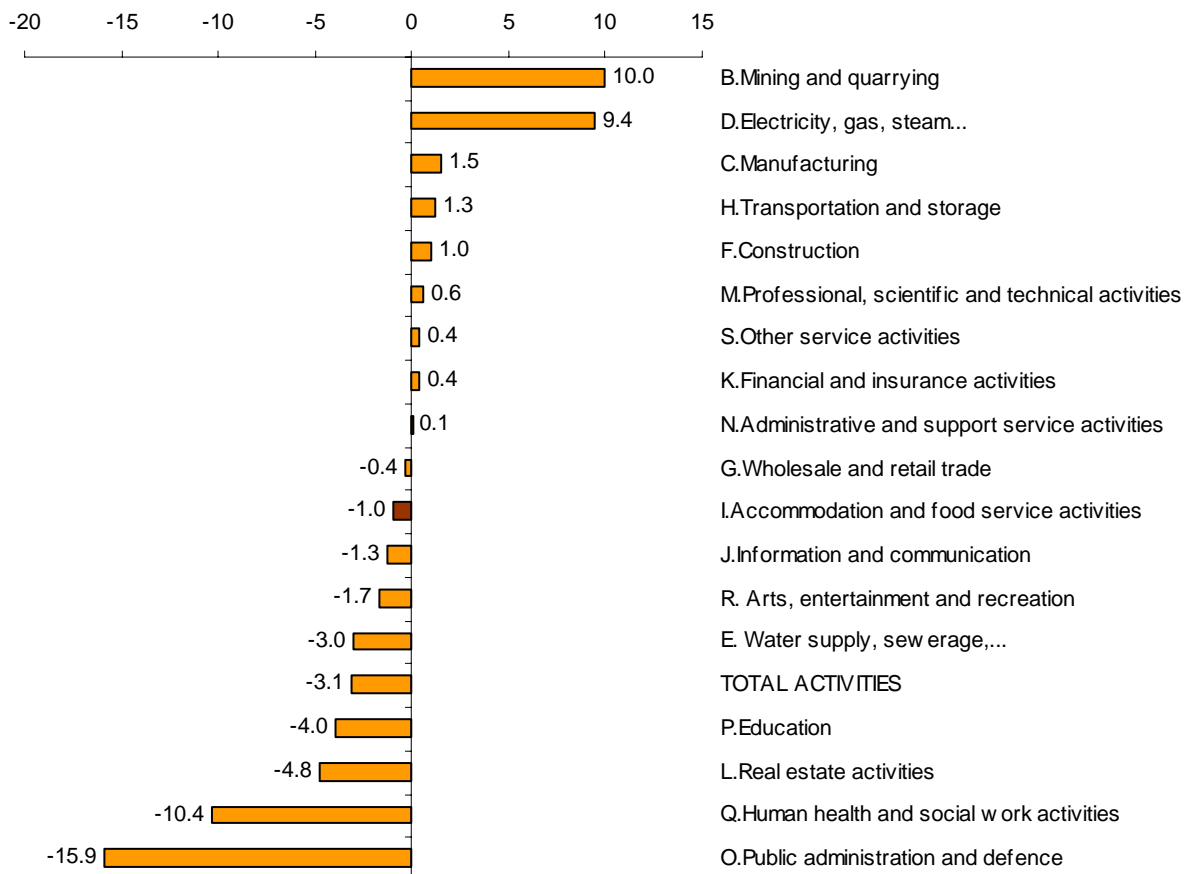
**Performance of the Harmonised Labour Cost Index
in the fourth quarter 2012 by activity sector**

	General index		Index seasonally adjusted and adjusted for calendar effects	
	Index	Rate	Index	Rate
TOTAL ACTIVITIES (Quarter-on-quarter rate)	110.0	-1.5	104.5	-3.1
TOTAL ACTIVITIES (Interannual rate)	110.0	-3.1	104.5	-3.1
INTERANNUAL DATA BY ACTIVITY SECTION				
B. Extractive industries	140.5	9.7	131.2	10.0
C. Manufacturing industry	117.8	1.6	110.8	1.5
D. Supply of electrical energy, gas, steam and air conditioning	119.6	9.9	119.1	9.4
E. Water supply, waste management and decontamination activities	109.4	-3.6	104.1	-3.0
F. Construction	122.0	0.9	113.2	1.0
G. Wholesale and retail trade, repair of motor vehicles and motorcycles	118.3	0.2	112.2	-0.4
H. Transport and storage	111.4	1.5	107.9	1.3
I. Accommodation	116.4	-1.0	108.1	-1.0
J. Information and communications	107.9	-1.1	104.8	-1.3
K. Financial and insurance activities	108.9	-0.6	111.6	0.4
L. Real estate activities	113.3	-4.3	103.7	-4.8
M. Professional, scientific and technical activities	113.4	0.9	108.7	0.6
N. Administrative and support service activities	109.8	0.3	105.3	0.1
O. Public Administration and Defence; Compulsory Social Security	95.1	-15.4	86.2	-15.9
P. Education	97.1	-5.3	100.0	-4.0
Q. Health activities and social services	98.0	-9.9	92.4	-10.4
R. Arts, recreation and entertainment activities	108.3	-2.2	103.1	-1.7
S. Other services	116.7	0.6	112.3	0.4

By sections of economic activities, those with the greatest growth were *Mining and quarrying* (10.0%) and *Electricity, gas, steam and air conditioning supply* (9.4%).

Conversely, *Public Administration and Defence; Compulsory Social Security* (-15.9%) and *Human health and social work activities* (-10.4%), presented the greatest decreases.

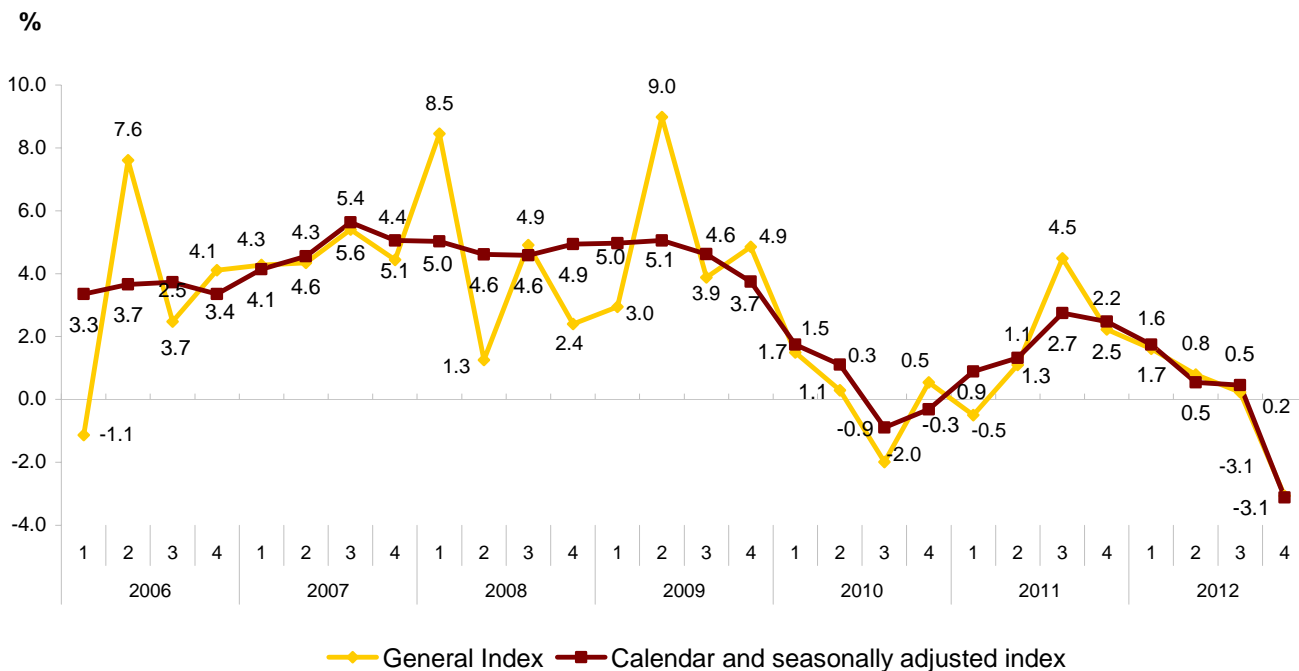
Annual rate (4Q2012, as compared with 4Q2011) of index for the calendar and seasonally adjusted series by activity sections of CNAE-09



Performance of the rate

The index adjusted for calendar and seasonal effects, showed the same annual variation than the gross item of data (-3.1%)

Annual performance of HLCI by quarter



Performance of the quarterly rate

The variation in the fourth quarter, as compared with the third quarter of 2012, for the calendar and seasonally adjusted series, registered a decrease of 3.1%.

Performance of the quarterly rate for the calendar and seasonally adjusted series (variation in the fourth quarter, as compared with the third quarter)

