

24 March 2015

Industrial Turnover Indices (ITI). Base 2010
January 2015. *Provisional data*

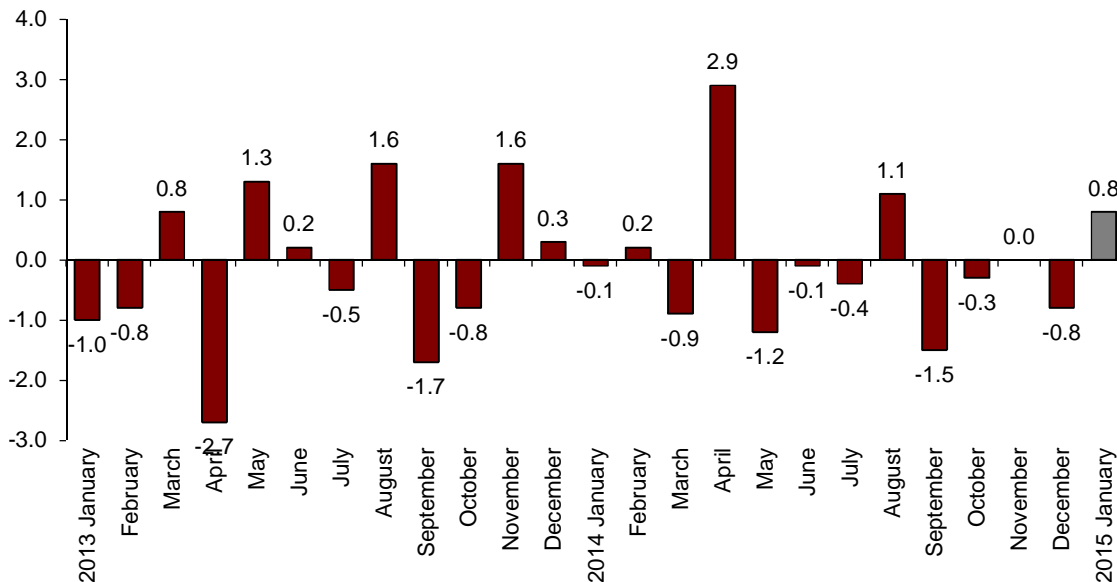
The monthly variation of the General Industry Turnover Index¹ stands at 0.8%, after adjusting the seasonal and calendar effects

The annual rate stands at -0.4% in the seasonally and calendar adjusted series and at -3.4% in the original series

Monthly evolution of the Industry Turnover

The monthly variation of the General Industry Turnover Index (ITI) between the months of January and December 2014 was 0.8%, after adjusting for the seasonal and calendar effects. This rate was 1.6 points higher than that of the previous month.

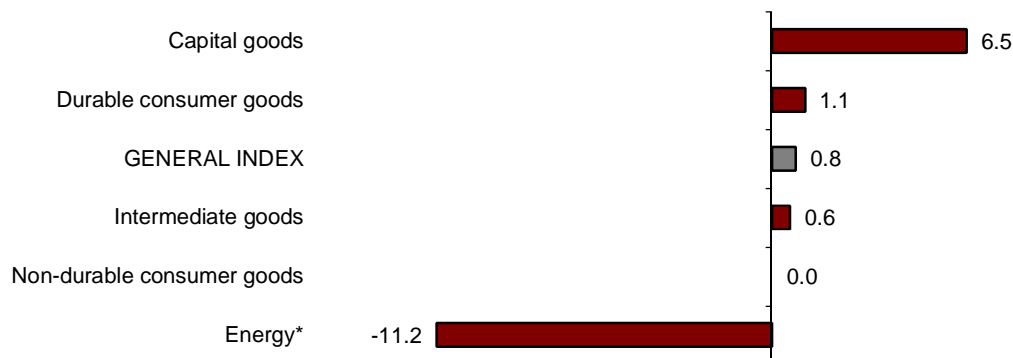
Turnover General Index
Adjusted for seasonal and calendar effects. Monthly rate



¹ As explained in the methodology for this value index, the information is presented in current terms (nominal terms), that is, without adjusting the effects in the price variation thereof.

By economic destination of the goods, Capital goods (6.5%), Durable consumer goods (1.1%) and Intermediate goods (0.6%) recorded positive monthly rates. In turn, Energy registered a negative rate of -11.2%.

**Turnover indices: General and by economic destination
Adjusted for seasonal and calendar effects. Monthly rate**



*Energy does not include electric power supply, nor gas, steam, air conditioning or water supply

A more detailed analysis showed the branches of activity with the highest and the lowest monthly rates in January.

**Branches of activity with the highest monthly rates of the Industrial Turnover Index,
Adjusted for seasonal and calendar effects**

Branch of activity (Section of the CNAE 2009)	Monthly rate (%)
Extraction of anthracite, coal and lignite	42.3
Manufacture of motor vehicles, trailers and semi-trailers	7.1
Metallurgy; manufacture of iron, steel and ferro-alloy products	3.8

**Branches of activity with the lowest monthly rates of the Industrial Turnover Index,
Adjusted for seasonal and calendar effects**

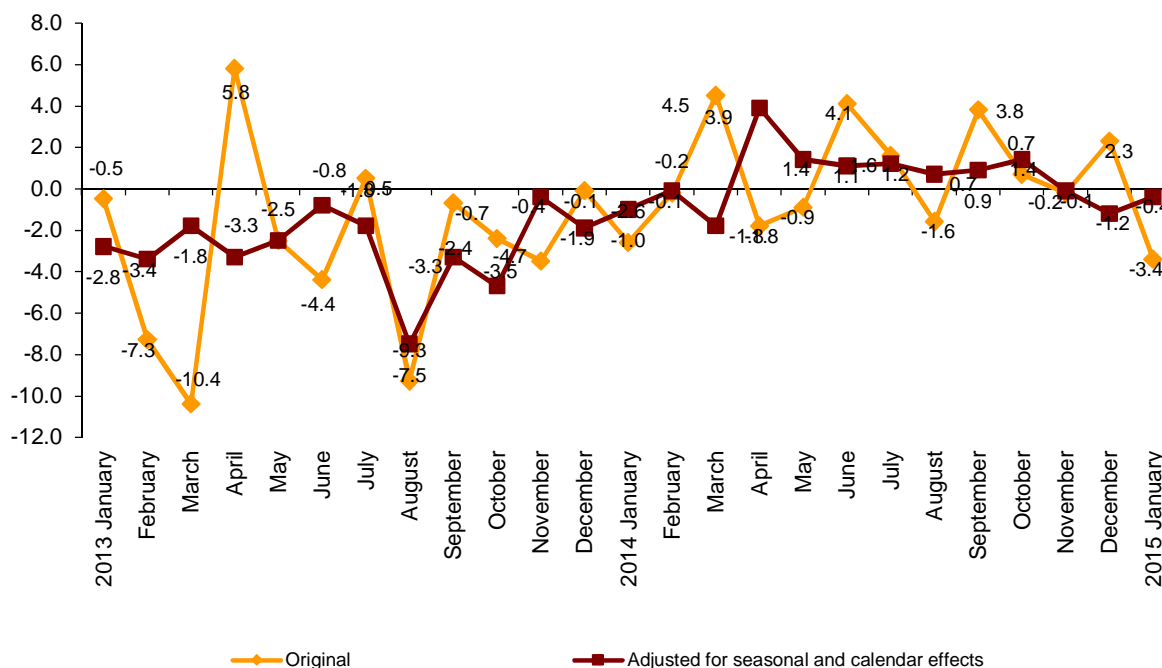
Branch of activity (Section of the CNAE 2009)	Monthly rate (%)
Manufacture of coke and refined petroleum products	-11.3
Manufacture of other transport material	-8.3
Manufacture of computer, electronic and optical products	-6.9

Annual evolution of the Industrial Turnover indices

The General Industrial Turnover Index (ITI), after adjusting for seasonal and calendar effects, registered a variation of -0.4% in January, as compared to the same month of the previous year. This rate was nearly eight tenths higher than that registered in December 2014.

The original series of the ITI registered an annual variation of -3.4% , that is, 5.7 points lower than that registered in December 2014.

**General Industrial Turnover Index
Annual rates**



By economic destination of the goods, three out of five sectors analysed registered negative annual rates, after adjusting for seasonal and calendar effects. Among them, worth noting was the decrease of Energy (-31.1%).

Annual rates of the Turnover National Index: General and by economic destination of the goods

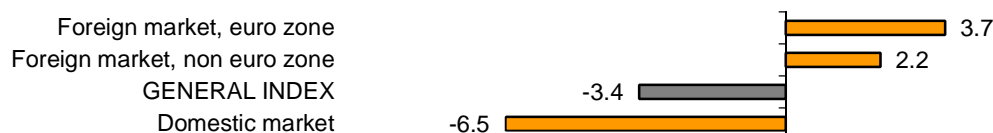
	Original index	Index adjusted for seasonal and calendar effects
	Annual rate (%)	Annual rate (%)
GENERAL INDEX	-3.4	-0.4
1. Consumer goods	-3.2	-0.3
1.1. Durable consumer goods	-0.7	2.7
1.2. Non-durable consumer goods	-3.4	-0.6
2. Capital goods	13.1	17.2
3. Intermediate goods	-3.5	-0.3
4. Energy*	-31.7	-31.1

* Except supply of electrical energy, gas, steam, air conditioning and water.

Annual evolution of the Industrial Turnover Indices by market. Original series

By geographical destination of sales, in January positive rates were recorded in both the foreign market in the Euro Zone (3.7%) and in the Non-euro Zone (2.2%). In turn, the domestic market registered a decrease of -6.5%.

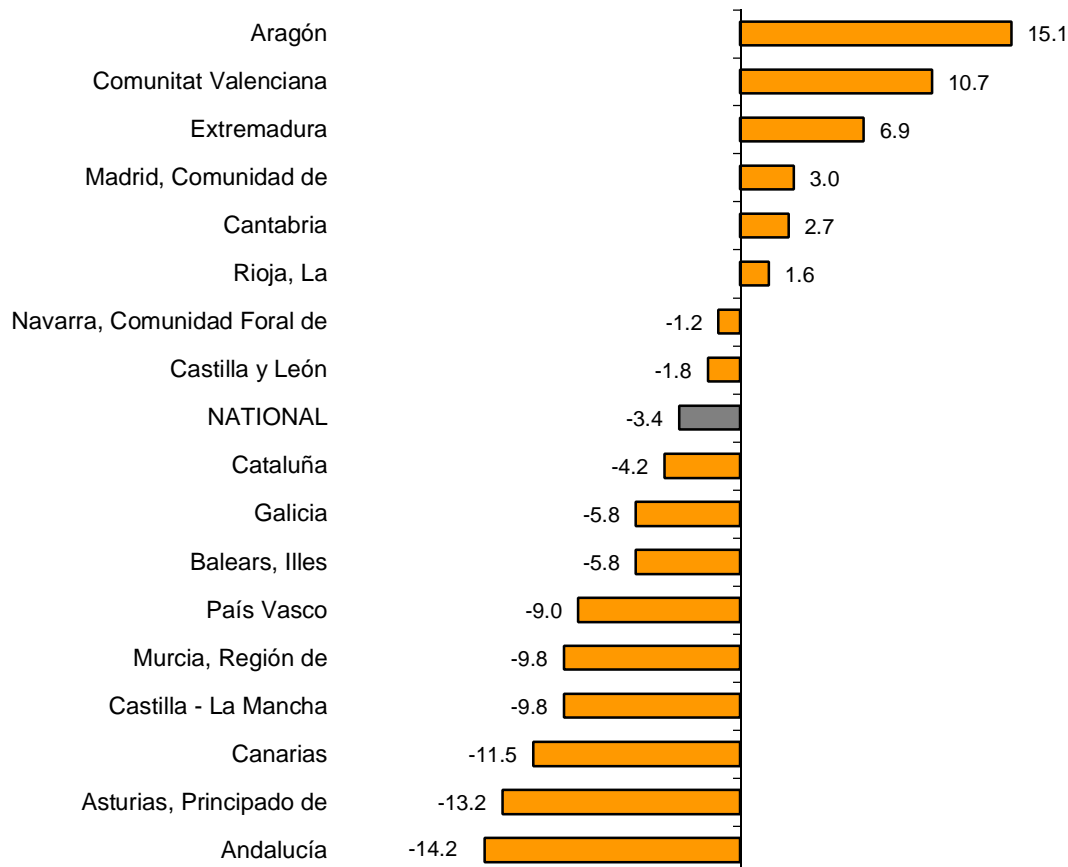
**Industrial turnover indices: General and by market
Annual rate**



Results by Autonomous Community. Annual variation rates of the Industrial Turnover. Original series

As compared to January 2014, turnover decreased in 11 Autonomous Communities and increased in the remaining six. The greatest decrease was registered in Andalucía (-14.2%) and the greatest increase was registered in Aragón (15.1%).

**General indices: National and by Autonomous Community
Annual rate and average rate of Industrial Turnover**



Industrial Turnover Index. Base 2010

January 2015

Provisional data

1. Turnover indices¹

Adjusted for seasonal and calendar effects

	Index	Rate (%)		
		Monthly	Annual	Year-to-date average
GENERAL INDEX	99.6	0.8	-0.4	-0.4
1. Consumer goods	98.3	-0.1	-0.3	-0.3
1.1. Durable consumer goods	69.7	1.1	2.7	2.7
1.2. Non-durable consumer goods	101.4	0.0	-0.6	-0.6
2. Capital goods	106.5	6.5	17.2	17.2
3. Intermediate goods	94.5	0.6	-0.3	-0.3
4. Energy*	100.2	-11.2	-31.1	-31.1

¹ Regulation (EC) no. 656/2007 of the Commission of 14 June 2007.

* Except supply of electrical energy, gas, steam, air conditioning and water.

2. Turnover indices¹

Adjusted for calendar effects

	Index	Rate (%)	
		Annual	Year-to-date average
GENERAL INDEX	92.4	-0.4	-0.4
1. Consumer goods	92.5	-0.1	-0.1
1.1. Durable consumer goods	60.4	3.5	3.5
1.2. Non-durable consumer goods	95.8	-0.2	-0.2
2. Capital goods	92.7	17.2	17.2
3. Intermediate goods	92.4	-0.1	-0.1
4. Energy*	92.8	-31.2	-31.2

¹ Regulation (EC) no. 656/2007 of the Commission of 14 June 2007.

* Except supply of electrical energy, gas, steam, air conditioning and water.

3. Turnover indices: General and by activities Originals series

	Index	Rate (%)		Effect Annual
		Annual	Year-to-date average	
GENERAL INDEX	90.3	-3.4	-3.4	
1. CONSUMER GOODS	90.2	-3.2	-3.2	-1.007
1.1. Durable consumer goods	58.5	-0.7	-0.7	-0.013
- Manufacture of consumer electronics, optical instruments and photographic equipment	9.0	3.8	3.8	0.001
- Manufacture of household appliances	81.6	5.1	5.1	0.031
- Manufacture of motorcycles, bicycles, vehicles for the disabled and others	21.9	-35.3	-35.3	-0.024
- Manufacture of furniture	60.7	-0.6	-0.6	-0.006
- Manufacture of jewellery, costume jewellery and musical instruments	75.9	-10.5	-10.5	-0.015
1.2. Non-durable consumer goods	93.4	-3.4	-3.4	-0.995
- Food industries (except grain mill products and food for animals)	102.2	-0.7	-0.7	-0.121
- Manufacture of beverages	73.1	-6.2	-6.2	-0.178
- Manufacture of tobacco	74.0	-0.4	-0.4	-0.001
- Manufacture of knitted fabrics, carpets, rope, non-woven fabrics, textile products for technical use and industrial and other textile products	88.3	-3.8	-3.8	-0.025
- Manufacture of garments	95.6	0.9	0.9	0.012
- Leather and footwear industry	104.0	-14.8	-14.8	-0.165
- Graphic arts and reproduction of recorded media	63.0	-5.9	-5.9	-0.069
- Manufacture of cleaning articles, perfumes and cosmetics	87.1	-7.8	-7.8	-0.113
- Manufacture of pharmaceutical products	94.8	-8.8	-8.8	-0.328
- Manufacture of sporting goods; games and toys and Other manufacturing industries	66.9	-2.7	-2.7	-0.008
2. CAPITAL GOODS	90.3	13.1	13.1	2.632
- Manufacture of metal products for construction, containers made of metal, steam generators, weapons and ammunition	51.5	2.3	2.3	0.037
- Manufacture of computers, peripherals and telecommunications equipment; appliances for measuring and navigation; radiation and medical and therapeutic equipment	78.2	12.4	12.4	0.076
- Manufacture of machinery and equipment n.e.c.	75.7	-3.5	-3.5	-0.109
- Manufacture of motor vehicles, trailers and semi-trailers	118.4	23.6	23.6	2.767
- Naval, railway, aircraft and spacecraft construction. Combat vehicles	46.9	-10.4	-10.4	-0.154
- Manufacture of medical and dental instruments and supplies	89.1	0.5	0.5	0.002
- Repair and installation of machinery and equipment	72.0	1.2	1.2	0.014
3. INTERMEDIATE GOODS	89.9	-3.5	-3.5	-1.312
- Other mining and quarrying	76.2	9.0	9.0	0.056
- Manufacture of grain mill products, starches, and food for animals	114.2	-3.1	-3.1	-0.098
- Preparation and spinning of textile fibres. Manufacture of woven textiles. Textile finishings	88.2	-3.9	-3.9	-0.020
- Wood and cork industry	72.4	-4.3	-4.3	-0.051
- Paper industry	95.9	-5.7	-5.7	-0.173
- Chemical industry except cleaning articles, perfumes and cosmetics	98.0	-7.5	-7.5	-0.551
- Rubber and plastic material transformation industry	90.9	-3.3	-3.3	-0.135
- Manufacture of other non-metallic ore products	65.6	-0.2	-0.2	-0.007
- Metallurgy; manufacture of iron, steel and ferro-alloy products	95.9	-1.8	-1.8	-0.125
- Forging, stamping, embossing and rolling of metals. - Manufacture of tools, hardware goods, containers and other metal products	97.2	-1.6	-1.6	-0.071
- Manufacture of electronic components, assembled printed circuits, and magnetic and optical media	34.1	-9.1	-9.1	-0.012
- Manufacture of electrical material and equipment except household appliances	78.4	-4.7	-4.7	-0.125
4. ENERGY*	92.3	-31.7	-31.7	-3.666
- Extraction of anthracite, coal and lignite	66.2	5.5	5.5	..
- Extraction of crude oil, petroleum and natural gas
- Manufacture of coke and refined petroleum products	92.7	-31.8	-31.8	-3.620

* Except supply of electrical energy, gas, steam, air conditioning and water.

(..) Data not available due to statistical secrecy.

4. Turnover indices: General and by branch of activity Originals series

	Index	Rate (%)		Effect
		Annual	Year-to-date average	Annual
GENERAL INDEX	90.3	-3.4	-3.4	
B. Mining and quarrying industries	75.9	1.3	1.3	0.010
Extraction of anthracite, coal and lignite	66.2	5.5	5.5	..
Extraction of crude oil, petroleum and natural gas
Other mining and quarrying	76.2	9.0	9.0	0.056
C. Manufacturing industry	90.4	-3.4	-3.4	-3.361
Food industry	103.9	-1.1	-1.1	-0.218
Manufacture of beverages	73.1	-6.2	-6.2	-0.178
Manufacture of tobacco	74.0	-0.4	-0.4	-0.001
Textile industry	88.3	-3.8	-3.8	-0.045
Manufacture of garments	95.6	0.9	0.9	0.012
Leather and footwear industry	104.0	-14.8	-14.8	-0.165
Manufacture of wood and of products of wood and cork, except furniture; basketmaking and wickerwork	72.4	-4.3	-4.3	-0.051
Paper industry	95.9	-5.7	-5.7	-0.173
Graphic arts and reproduction of recorded media	63.0	-5.9	-5.9	-0.069
Manufacture of coke and refined petroleum products	92.7	-31.8	-31.8	-3.620
Chemical industry	96.0	-7.6	-7.6	-0.664
Manufacture of pharmaceutical products	94.8	-8.8	-8.8	-0.328
Rubber and plastic material transformation industry	90.9	-3.3	-3.3	-0.135
Manufacture of other non-metallic ore products	65.6	-0.2	-0.2	-0.007
Metallurgy; manufacture of iron, steel and ferro-alloy products	95.9	-1.8	-1.8	-0.125
Manufacture of metal products, except machinery and equipment	78.6	-0.6	-0.6	-0.034
Manufacture of computer, electronic and optical products	53.3	8.5	8.5	0.066
Manufacture of electrical material and equipment	79.0	-2.9	-2.9	-0.094
Manufacture of machinery and equipment n.e.c.	75.7	-3.5	-3.5	-0.109
Manufacture of motor vehicles, trailers and semi-trailers	118.4	23.6	23.6	2.767
Manufacture of other transport material	45.2	-11.5	-11.5	-0.177
Manufacture of furniture	60.7	-0.6	-0.6	-0.006
Other manufacturing industries	77.1	-2.8	-2.8	-0.021
Repair and installation of machinery and equipment	72.0	1.2	1.2	0.014

(..) Data not available due to statistical secrecy.

5. Turnover indices: General and by markets Originals series

	Index	Rate (%)	
		Annual	Year-to-date average
GENERAL INDEX	90.3	-3.4	-3.4
1. Domestic market	79.1	-6.5	-6.5
2. Foreign market	108.6	2.8	2.8
2.1. Foreign market, euro zone	110.5	3.7	3.7
2.2. Foreign market, non euro zone	105.4	2.2	2.2

6. Turnover indices: National and by Autonomous Community

Originals series

	Index	Rate (%)	
		Annual	Year-to-date average
NATIONAL	90.3	-3.4	-3.4
Andalucía	88.7	-14.2	-14.2
Aragón	101.3	15.1	15.1
Asturias, Principado de	76.5	-13.2	-13.2
Balears, Illes	61.8	-5.8	-5.8
Canarias	64.1	-11.5	-11.5
Cantabria	88.6	2.7	2.7
Castilla y León	85.7	-1.8	-1.8
Castilla - La Mancha	85.0	-9.8	-9.8
Cataluña	95.2	-4.2	-4.2
Comunitat Valenciana	105.5	10.7	10.7
Extremadura	95.5	6.9	6.9
Galicia	86.7	-5.8	-5.8
Madrid, Comunidad de	74.7	3.0	3.0
Murcia, Región de	117.8	-9.8	-9.8
Navarra, Comunidad Foral de	88.8	-1.2	-1.2
País Vasco	79.5	-9.0	-9.0
Rioja, La	89.1	1.6	1.6

For further information see **INEbase** - www.ine.es/en/ All press releases at: www.ine.es/en/prensa/prensa_en.htm

Press Office: Telephone numbers: 91 583 93 63 / 94 08 – Fax: 91 583 90 87 - gprensa@ine.es

Information Area: Telephone number: 91 583 91 00 – Fax: 91 583 91 58 – www.ine.es/infoine