

Industrial Turnover Indices (ITI). Base 2010

February 2014. *Provisional data*

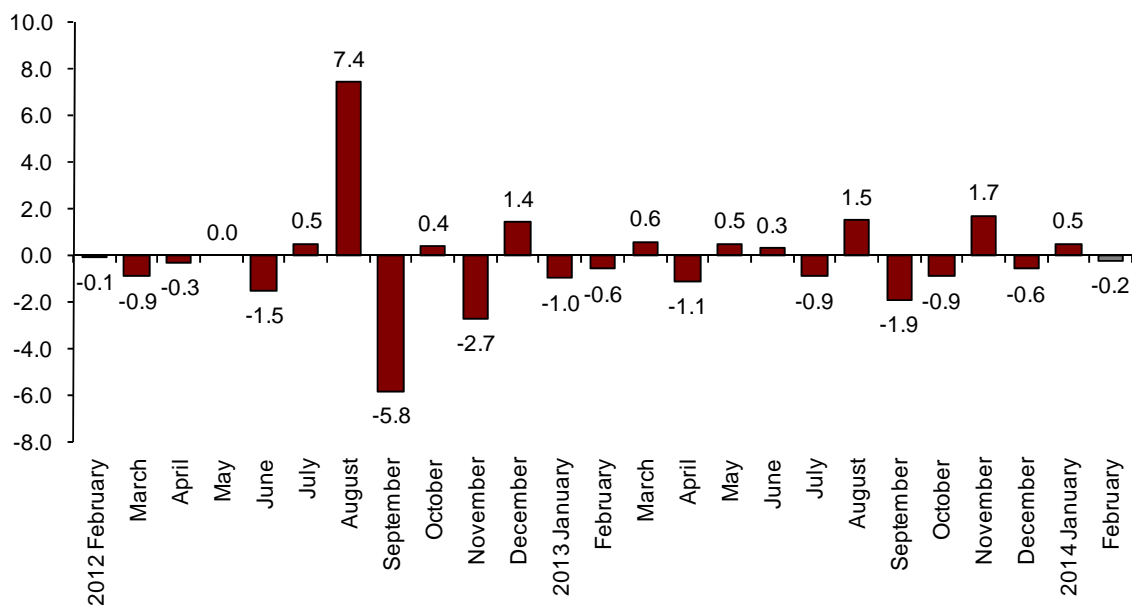
The monthly variation of the General Industry Turnover Index stands at -0.2% , after adjusting the seasonal and calendar effects

The annual rate stands at -0.4% in the seasonally and calendar adjusted series and at -0.3% in the original series

Monthly evolution of the Industry Turnover

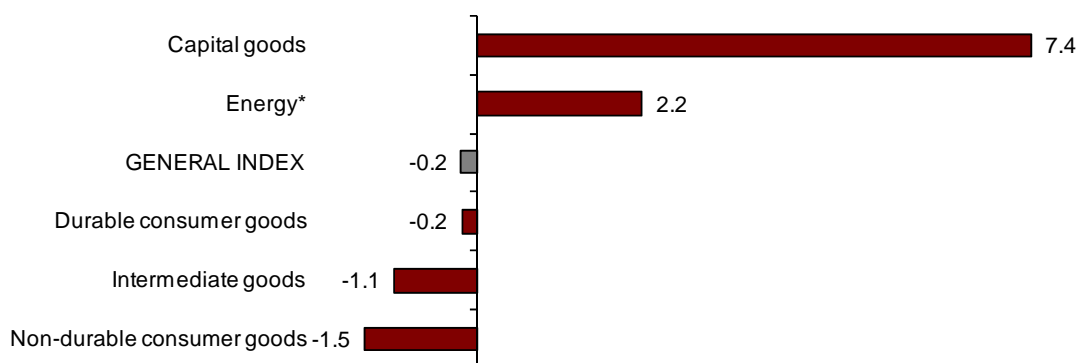
The monthly variation of the General Industry Turnover Index (ITI) between the months of February and January 2014 was -0.2% , after adjusting for the seasonal and calendar effects. This rate was more than half a point lower than that of the previous month.

Turnover General Index
Adjusted for seasonal and calendar effects. Monthly rate



By economic destination of the goods, Capital goods (7.4%) and Energy (2.2%) registered positive monthly rates. In turn, Non-durable consumer goods (-1.5%), Intermediate goods (-1.1%) and Durable consumer goods (-0.2%) registered negative monthly rates.

**Turnover indices: General and by economic destination
Adjusted for seasonal and calendar effects. Monthly rate**



*Energy does not include electric power supply, nor water supply

A more detailed analysis showed the branches of activity with the highest and the lowest monthly rates in February.

**Branches of activity with the highest monthly rates of the Industrial Turnover Index,
Adjusted for seasonal and calendar effects**

Branch of activity (Section of the CNAE 2009)	Monthly rate (%)
Manufacture of motor vehicles, trailers and semi-trailers	12.9
Manufacture of coke and refined petroleum products	3.2
Manufacture of tobacco	2.2

**Branches of activity with the lowest monthly rates of the Industrial Turnover Index,
Adjusted for seasonal and calendar effects**

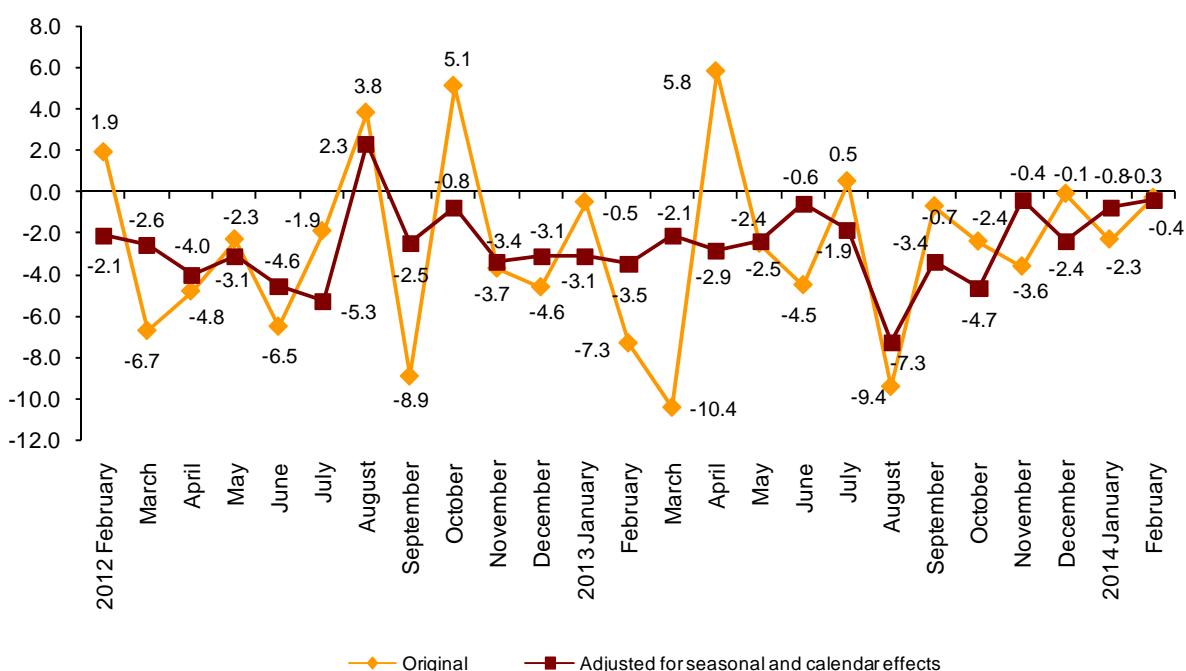
Branch of activity (Section of the CNAE 2009)	Monthly rate (%)
Extraction of anthracite, coal and lignite	-31.2
Manufacture of pharmaceutical products	-14.2
Metallurgy; manufacture of iron, steel and ferro-alloy products	-5.6

Annual evolution of the Industrial Turnover indices

The General Industrial Turnover Index (ITI), after adjusting for seasonal and calendar effects, registered a variation of -0.4% in February, as compared with the same month of the previous year. This rate was nearly half a point higher than that registered in January 2014.

The original series of the ITI registered an annual variation of -0.3% , that is, two points higher than that registered in January 2014.

General Industrial Turnover Index Annual rates



By economic destination of the goods, three out of the five sectors analysed registered negative annual rates, after adjusting for seasonal and calendar effects. Energy (-9.5%) registered the greatest decrease.

Annual rates of the Turnover National Index: General and by economic destination of the goods

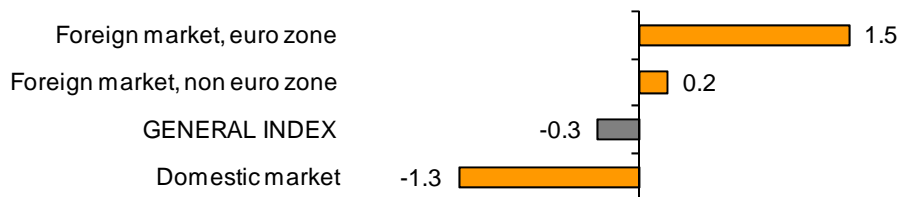
	Original index	Index adjusted for seasonal and calendar effects
	Annual rate (%)	Annual rate (%)
GENERAL INDEX	-0.3	-0.4
1. Consumer goods	0.6	0.3
1.1. Durable consumer goods	0.2	-0.1
1.2. Non-durable consumer goods	0.6	0.6
2. Capital goods	5.3	5.2
3. Intermediate goods	-1.5	-1.6
4. Energy*	-9.5	-9.5

* Except supply of electrical energy, gas, steam, air conditioning and water.

Annual evolution of the Industrial Turnover Indices by market. Original series

By geographical destination of sales, the foreign market registered positive annual rates in February, both in the euro zone and the non euro zone. In turn, the invoicing in the domestic market registered a 1.3% decrease.

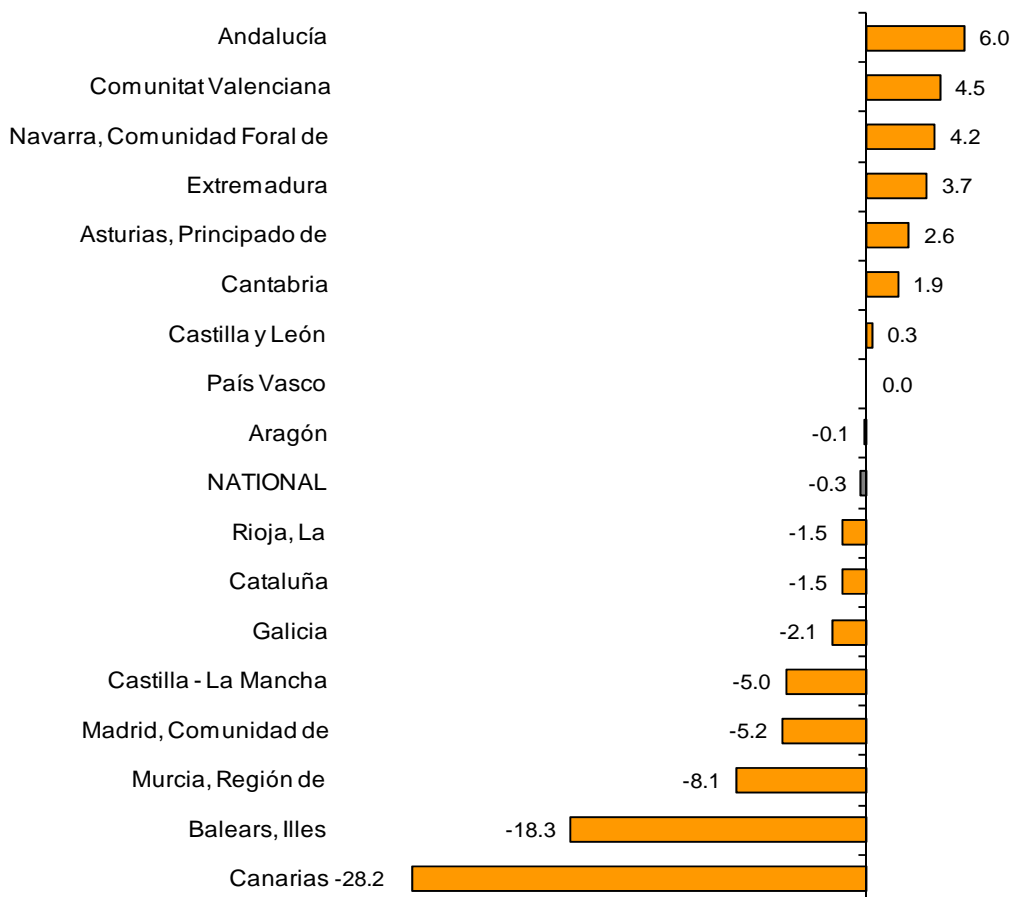
**Industrial turnover indices: General and by market
Annual rate**



Results by Autonomous Community. Annual variation rates of the Industrial Turnover. Original series

The turnover increased in seven Autonomous Communities, as compared with February 2013, and it decreased in the remaining nine. The greatest decrease was registered in Canarias (-28.2%) and Illes Balears (-18.3%).

**General indices: National and by Autonomous Community
Annual rate of Industrial Turnover**



Industrial Turnover Index. Base 2010

February 2014

Provisional data

1. Turnover indices¹

Adjusted for seasonal and calendar effects

	Index	Rate (%)		
		Monthly	Annual	Year-to-date average
GENERAL INDEX	99.5	-0.2	-0.4	-0.6
1. Consumer goods	98.2	-1.0	0.3	0.4
1.1. Durable consumer goods	68.0	-0.2	-0.1	-2.5
1.2. Non-durable consumer goods	101.4	-1.5	0.6	1.0
2. Capital goods	98.9	7.4	5.2	2.7
3. Intermediate goods	94.1	-1.1	-1.6	-1.6
4. Energy*	142.8	2.2	-9.5	-8.7

¹ Regulation (EC) no. 656/2007 of the Commission of 14 June 2007.

* Except supply of electrical energy, gas, steam, air conditioning and water.

2. Turnover indices¹

Adjusted for calendar effects

	Index	Rate (%)	
		Annual	Year-to-date average
GENERAL INDEX	97.1	-0.3	-0.4
1. Consumer goods	91.0	0.6	1.3
1.1. Durable consumer goods	64.4	0.2	-1.9
1.2. Non-durable consumer goods	93.8	0.6	1.5
2. Capital goods	99.2	5.3	2.8
3. Intermediate goods	93.2	-1.5	-1.1
4. Energy*	131.9	-9.5	-8.7

¹ Regulation (EC) no. 656/2007 of the Commission of 14 June 2007.

* Except supply of electrical energy, gas, steam, air conditioning and water.

3. Turnover indices: General and by activities Originals series

	Index	Rate (%)		Effect Annual
		Annual	Year-to-date average	
GENERAL INDEX	96.0	-0.3	-1.3	
1. CONSUMER GOODS	89.9	0.6	0.4	0.173
1.1. Durable consumer goods	63.6	0.2	-3.0	0.003
- Manufacture of consumer electronics, optical instruments and photographic equipment	7.5	5.6	3.9	0.001
- Manufacture of household appliances	78.5	-7.3	-9.5	-0.046
- Manufacture of motorcycles, bicycles, vehicles for the disabled and others	32.5	-8.4	-11.9	-0.006
- Manufacture of furniture	71.3	4.3	1.1	0.045
- Manufacture of jewellery, costume jewellery and musical instruments	73.8	8.3	1.4	0.009
1.2. Non-durable consumer goods	92.6	0.6	0.6	0.170
- Food industries (except grain mill products and food for animals)	99.3	2.6	1.5	0.391
- Manufacture of beverages	73.7	0.6	0.7	0.016
- Manufacture of tobacco	83.5	-0.9	-5.3	-0.002
- Manufacture of knitted fabrics, carpets, rope, non-woven fabrics, textile products for technical use and industrial and other textile products	92.4	0.5	-1.7	0.003
- Manufacture of garments	90.7	4.8	4.0	0.057
- Leather and footwear industry	135.0	12.2	10.7	0.130
- Graphic arts and reproduction of recorded media	64.4	-7.7	-11.5	-0.091
- Manufacture of cleaning articles, perfumes and cosmetics	92.7	-7.4	-6.4	-0.110
- Manufacture of pharmaceutical products	87.5	-7.5	0.4	-0.246
- Manufacture of sporting goods; games and toys and Other manufacturing industries	80.9	7.2	3.2	0.022
2. CAPITAL GOODS	97.6	5.3	1.9	1.195
- Manufacture of metal products for construction, containers made of metal, steam generators, weapons and ammunition	55.5	-14.4	-14.1	-0.287
- Manufacture of computers, peripherals and telecommunications equipment; appliances for measuring and navigation; radiation and medical and therapeutic equipment	69.6	-2.1	-4.3	-0.013
- Manufacture of machinery and equipment n.e.c.	86.1	1.6	1.5	0.054
- Manufacture of motor vehicles, trailers and semi-trailers	119.8	11.5	5.3	1.462
- Naval, railway, aircraft and spacecraft construction. Combat vehicles	85.3	-4.1	-0.1	-0.100
- Manufacture of medical and dental instruments and supplies	90.6	9.6	9.2	0.028
- Repair and installation of machinery and equipment	78.6	4.2	-0.9	0.050
3. INTERMEDIATE GOODS	92.6	-1.5	-2.0	-0.537
- Other mining and quarrying	72.1	-12.0	-12.0	-0.084
- Manufacture of grain mill products, starches, and food for animals	113.1	-5.0	-7.0	-0.156
- Preparation and spinning of textile fibres. Manufacture of woven textiles. Textile finishings	93.8	1.2	-1.6	0.006
- Wood and cork industry	82.4	7.1	7.0	0.083
- Paper industry	93.9	-4.6	-4.6	-0.130
- Chemical industry except cleaning articles, perfumes and cosmetics	101.1	-6.6	-6.0	-0.480
- Rubber and plastic material transformation industry	94.1	3.7	2.7	0.140
- Manufacture of other non-metallic ore products	68.7	3.6	1.9	0.114
- Metallurgy; manufacture of iron, steel and ferro-alloy products	94.7	-3.1	-1.6	-0.208
- Forging, stamping, embossing and rolling of metals. - Manufacture of tools, hardware goods, containers and other metal products	101.1	3.8	1.2	0.164
- Manufacture of electronic components, assembled printed circuits, and magnetic and optical media	40.0	-0.2	-6.6	0.000
- Manufacture of electrical material and equipment except household appliances	89.3	0.6	-1.5	0.016
4. ENERGY*	131.7	-9.5	-8.8	-1.152
- Extraction of anthracite, coal and lignite	50.7	10.7	31.8	..
- Extraction of crude oil, petroleum and natural gas
- Manufacture of coke and refined petroleum products	132.7	-9.6	-8.9	-1.145

* Except supply of electrical energy, gas, steam, air conditioning and water.

(..) Data not available due to statistical secrecy.

4. Turnover indices: General and by branch of activity Originals series

	Index	Rate (%)		Effect
		Annual	Year-to-date average	Annual
GENERAL INDEX	96.0	-0.3	-1.3	
B. Mining and quarrying industries	74.1	-10.8	-9.3	-0.091
Extraction of anthracite, coal and lignite	50.7	10.7	31.8	..
Extraction of crude oil, petroleum and natural gas
Other mining and quarrying	72.1	-12.0	-12.0	-0.084
C. Manufacturing industry	96.3	-0.2	-1.2	-0.230
Food industry	101.3	1.3	0.0	0.235
Manufacture of beverages	73.7	0.6	0.7	0.016
Manufacture of tobacco	83.5	-0.9	-5.3	-0.002
Textile industry	93.1	-1.7	0.8	0.009
Manufacture of garments	90.7	4.8	4.0	0.057
Leather and footwear industry	135.0	12.2	10.7	0.130
Manufacture of wood and of products of wood and cork, except furniture; basketmaking and wickerwork	82.4	7.1	7.0	0.083
Paper industry	93.9	-4.6	-4.6	-0.130
Graphic arts and reproduction of recorded media	64.4	-7.7	-11.5	-0.091
Manufacture of coke and refined petroleum products	132.7	-9.6	-8.9	-1.145
Chemical industry	99.6	-6.8	-6.1	-0.590
Manufacture of pharmaceutical products	87.5	-7.5	0.4	-0.246
Rubber and plastic material transformation industry	94.1	3.7	2.7	0.140
Manufacture of other non-metallic ore products	68.7	3.6	1.9	0.114
Metallurgy; manufacture of iron, steel and ferro-alloy products	94.7	-3.1	-1.6	-0.208
Manufacture of metal products, except machinery and equipment	82.5	-1.9	-3.4	-0.123
Manufacture of computer, electronic and optical products	49.4	-1.5	-4.5	-0.012
Manufacture of electrical material and equipment	87.2	-0.9	-3.0	-0.031
Manufacture of machinery and equipment n.e.c.	86.1	1.6	1.5	0.054
Manufacture of motor vehicles, trailers and semi-trailers	119.8	11.5	5.3	1.462
Manufacture of other transport material	81.9	-4.2	-0.5	-0.106
Manufacture of furniture	71.3	4.3	1.1	0.045
Other manufacturing industries	83.4	8.4	5.3	0.059
Repair and installation of machinery and equipment	78.6	4.2	-0.9	0.050

(..) Data not available due to statistical secrecy.

5. Turnover indices: General and by markets Originals series

	Index	Rate (%)	
		Annual	Year-to-date average
GENERAL INDEX	96.0	-0.3	-1.3
1. Domestic market	84.4	-1.3	-2.1
2. Foreign market	114.3	0.8	-1.0
2.1. Foreign market, euro zone	109.5	1.5	0.0
2.2. Foreign market, non euro zone	122.2	0.2	-2.5

6. Turnover indices: National and by Autonomous Community

Originals series

	Index	Rate (%)	
		Annual	Year-to-date average
NATIONAL	96.0	-0.3	-1.3
Andalucía	106.2	6.0	2.3
Aragón	94.9	-0.1	-0.5
Asturias, Principado de	79.2	2.6	7.1
Balears, Illes	65.3	-18.3	-18.0
Canarias	69.6	-28.2	-28.2
Cantabria	96.1	1.9	-2.5
Castilla y León	88.6	0.3	3.4
Castilla - La Mancha	95.4	-5.0	-3.1
Cataluña	99.2	-1.5	-0.8
Comunitat Valenciana	107.0	4.5	-2.1
Extremadura	94.0	3.7	0.7
Galicia	91.4	-2.1	-1.8
Madrid, Comunidad de	83.8	-5.2	-7.3
Murcia, Región de	102.1	-8.1	-6.2
Navarra, Comunidad Foral de	92.2	4.2	3.3
País Vasco	93.1	0.0	-1.7
Rioja, La	87.4	-1.5	-0.9

For further information see **INEbase** - www.ine.es/en/ All press releases at: www.ine.es/en/prensa/prensa_en.htm

Press Office: Telephone numbers: 91 583 93 63 / 94 08 – Fax: 91 583 90 87 - gprensa@ine.es

Information Area: Telephone number: 91 583 91 00 – Fax: 91 583 91 58 – www.ine.es/infoine