

Industrial Turnover Indices (ITI). Base 2010

October 2015. *Provisional data*

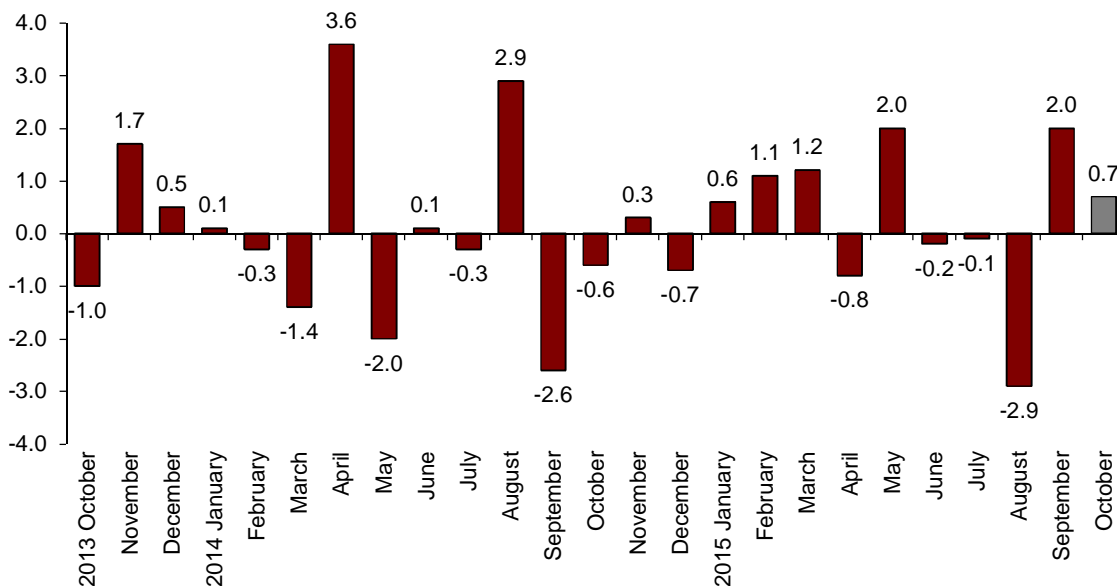
The monthly variation of the General Industry Turnover Index¹ stands at 0.7%, after adjusting for seasonal and calendar effects

The annual rate stands at 3.1% in the seasonally and calendar adjusted series and at -2.1% in the original series

Monthly evolution of the Industry Turnover

The monthly variation of the General Industry Turnover Index (ITI) between the months of October and September 2015 was 0.7%, after adjusting for the seasonal and calendar effects. This rate was 1.3 points lower than that of the previous month.

Turnover General Index
Adjusted for seasonal and calendar effects. Monthly rate

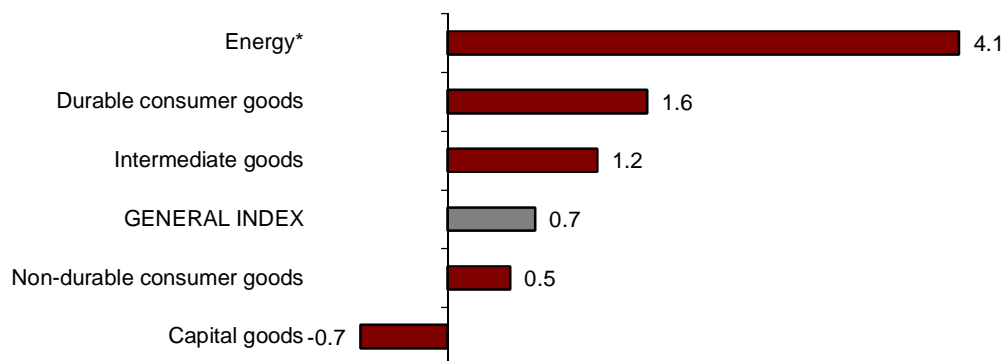


¹ As explained in the methodology for this value index, the information is presented in current terms (nominal terms), that is, without adjusting the effects in the price variation thereof.

By economic destination of the goods, four out of five sectors presented positive monthly rates, worth noting energy (4.1%).

Capital goods is the only sector that decreased (-0.7%).

**Turnover indices: General and by economic destination
Adjusted for seasonal and calendar effects. Monthly rate**



*Energy does not include electric power supply, nor gas, steam, air conditioning or water supply.

A more detailed analysis showed the branches of activity with the highest and the lowest monthly rates in October.

**Branches of activity with the highest monthly rates of the Industrial Turnover Index,
Adjusted for seasonal and calendar effects**

Branch of activity (Section of the CNAE 2009)	Monthly rate (%)
	9.8
	4.4
	4.3

**Branches of activity with the lowest monthly rates of the Industrial Turnover Index,
Adjusted for seasonal and calendar effects**

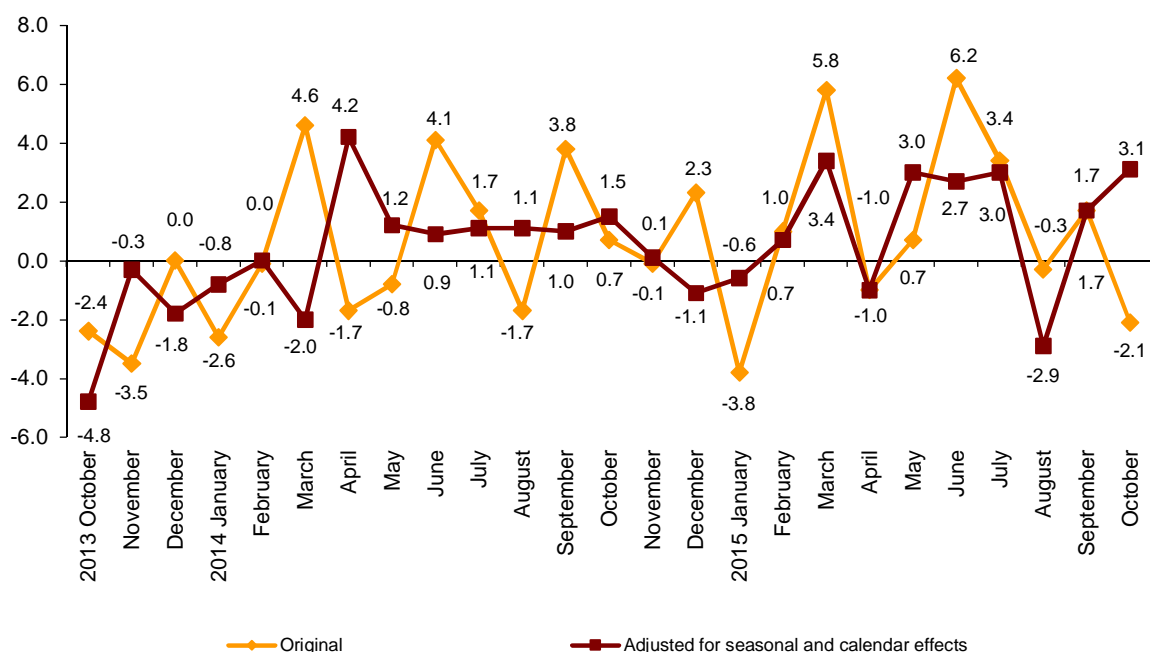
Branch of activity (Section of the CNAE 2009)	Monthly rate (%)
	-37.5
	-11.7
	-5.5

Annual evolution of the Industrial Turnover Indices

The General Industrial Turnover Index (ITI), after adjusting for seasonal and calendar effects, registered a variation of 3.1% in October, as compared to the same month of the previous year. This rate was 1.4 points higher than that registered in September 2015.

The original series of the ITI registered an annual variation of -2.1%, which is 3.8 points lower than that registered in September 2015.

General Industrial Turnover Index Annual rates



By economic destination of the goods, four out of five sectors analysed registered positive annual rates, after adjusting for seasonal and calendar effects. It is worth noting the increase in Capital goods (12.0%).

Annual rates of the Turnover National Index: General and by economic destination of the goods

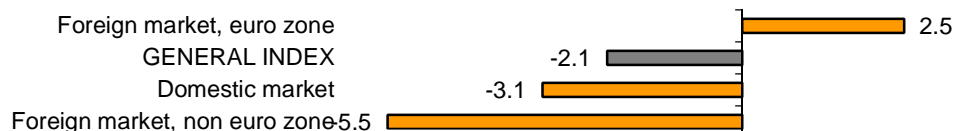
	Original index	Index adjusted for seasonal and calendar effects
	Annual rate (%)	Annual rate (%)
GENERAL INDEX	-2.1	3.1
1. Consumer goods	-0.5	3.7
1.1. Durable consumer goods	-1.1	5.9
1.2. Non-durable consumer goods	-0.4	5.1
2. Capital goods	5.2	12.0
3. Intermediate goods	-2.1	4.0
4. Energy*	-24.2	-23.3

* Except supply of electrical energy, gas, steam, air conditioning and water.

Annual evolution of the Industrial Turnover Indices by market. Original series

By geographical destination of sales, in October two out of three the markets analysed registered negative annual rates. Worth noting was the decrease of the non-euro zone of the foreign market (-5.5%).

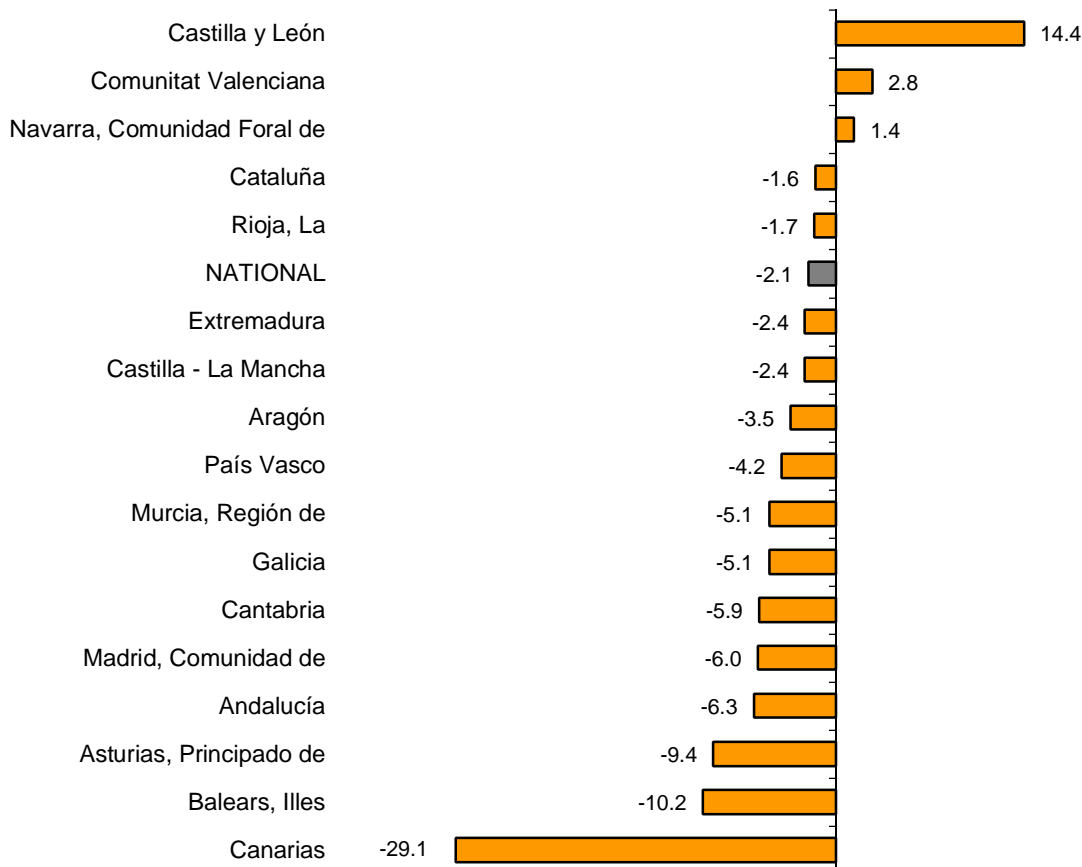
**Industrial turnover indices: General and by market
Annual rate**



Results by Autonomous Community. Annual variation rates of the Industrial Turnover. Original series

Turnover increased in three Autonomous Communities and it decreased in the rest of Autonomous Communities. The greatest increase was registered in Castilla y León (14.4%) and the greatest decrease was registered in Canarias (-29.1%).

**General indices: National and by Autonomous Community
Annual rate and average rate of Industrial Turnover**



Industrial Turnover Index. Base 2010

October 2015

Provisional data

1. Turnover indices¹

Adjusted for seasonal and calendar effects

	Index	Rate (%)		
		Monthly	Annual	Year-to-date average
GENERAL INDEX	102.7	0.7	3.1	1.3
1. Consumer goods	100.8	0.3	3.7	1.8
1.1. Durable consumer goods	72.1	1.6	5.9	3.9
1.2. Non-durable consumer goods	104.3	0.5	5.1	1.7
2. Capital goods	112.3	-0.7	12.0	10.8
3. Intermediate goods	97.7	1.2	4.0	3.1
4. Energy*	103.0	4.1	-23.3	-23.6

¹ Regulation (EC) no. 656/2007 of the Commission of 14 June 2007.

* Except supply of electrical energy, gas, steam, air conditioning and water.

2. Turnover indices¹

Adjusted for calendar effects

	Index	Rate (%)	
		Annual	Year-to-date average
GENERAL INDEX	107.8	3.1	1.5
1. Consumer goods	106.4	5.3	2.0
1.1. Durable consumer goods	80.4	6.3	4.4
1.2. Non-durable consumer goods	109.1	5.4	1.8
2. Capital goods	120.1	12.0	11.1
3. Intermediate goods	102.3	4.0	3.3
4. Energy*	105.1	-23.3	-23.5

¹ Regulation (EC) no. 656/2007 of the Commission of 14 June 2007.

* Except supply of electrical energy, gas, steam, air conditioning and water.

3. Turnover indices: General and by activities Originals series

	Index	Rate (%)		Effect Annual
		Annual	Year-to-date average	
GENERAL INDEX	106.1	-2.1	1.3	
1. CONSUMER GOODS	104.5	-0.5	1.8	-0.136
1.1. Durable consumer goods	78.5	-1.1	3.9	-0.023
- Manufacture of consumer electronics, optical instruments and photographic equipment	10.7	21.4	28.5	0.006
- Manufacture of household appliances	97.3	-0.8	1.6	-0.005
- Manufacture of motorcycles, bicycles, vehicles for the disabled and others	25.2	-19.2	-21.8	-0.010
- Manufacture of furniture	88.9	-0.9	5.9	-0.011
- Manufacture of jewellery, costume jewellery and musical instruments	95.6	-1.5	3.4	-0.002
1.2. Non-durable consumer goods	107.2	-0.4	1.6	-0.113
- Food industries (except grain mill products and food for animals)	116.6	-0.5	1.9	-0.075
- Manufacture of beverages	95.0	-1.6	-2.2	-0.048
- Manufacture of tobacco	76.9	-17.0	-17.2	-0.033
- Manufacture of knitted fabrics, carpets, rope, non-woven fabrics, textile products for technical use and industrial and other textile products	114.0	7.0	5.2	0.046
- Manufacture of garments	100.0	10.1	4.7	0.110
- Leather and footwear industry	98.3	-5.1	1.1	-0.042
- Graphic arts and reproduction of recorded media	75.8	-1.8	-0.4	-0.020
- Manufacture of cleaning articles, perfumes and cosmetics	104.2	0.1	1.6	0.002
- Manufacture of pharmaceutical products	98.3	-2.4	4.0	-0.075
- Manufacture of sporting goods; games and toys and Other manufacturing industries	120.1	5.2	5.1	0.021
2. CAPITAL GOODS	117.8	5.2	10.6	1.273
- Manufacture of metal products for construction, containers made of metal, steam generators, weapons and ammunition	68.9	4.4	4.2	0.080
- Manufacture of computers, peripherals and telecommunications equipment; appliances for measuring and navigation; radiation and medical and therapeutic equipment	85.2	-11.1	5.3	-0.081
- Manufacture of machinery and equipment n.e.c.	111.5	3.4	4.8	0.128
- Manufacture of motor vehicles, trailers and semi-trailers	145.0	11.7	14.7	1.604
- Naval, railway, aircraft and spacecraft construction. Combat vehicles	88.7	-22.0	4.2	-0.610
- Manufacture of medical and dental instruments and supplies	105.0	3.5	6.9	0.011
- Repair and installation of machinery and equipment	95.1	11.7	9.5	0.140
3. INTERMEDIATE GOODS	100.3	-2.1	3.0	-0.726
- Other mining and quarrying	86.4	-1.5	7.9	-0.010
- Manufacture of grain mill products, starches, and food for animals	126.0	0.7	-0.4	0.022
- Preparation and spinning of textile fibres. Manufacture of woven textiles. Textile finishings	108.0	-1.9	0.9	-0.010
- Wood and cork industry	89.4	0.2	4.4	0.002
- Paper industry	101.6	1.1	2.1	0.029
- Chemical industry except cleaning articles, perfumes and cosmetics	103.1	-2.2	-0.3	-0.137
- Rubber and plastic material transformation industry	104.4	0.1	2.9	0.006
- Manufacture of other non-metallic ore products	80.9	-1.1	5.6	-0.040
- Metallurgy; manufacture of iron, steel and ferro-alloy products	97.1	-8.6	4.0	-0.554
- Forging, stamping, embossing and rolling of metals. - Manufacture of tools, hardware goods, containers and other metal products	112.9	0.8	4.5	0.036
- Manufacture of electronic components, assembled printed circuits, and magnetic and optical media	40.7	1.0	12.9	0.001
- Manufacture of electrical material and equipment except household appliances	99.0	-2.5	6.0	-0.071
4. ENERGY*	104.6	-24.2	-23.5	-2.467
- Extraction of anthracite, coal and lignite	39.3	-56.1	-39.5	..
- Extraction of crude oil, petroleum and natural gas
- Manufacture of coke and refined petroleum products	105.8	-23.6	-23.2	-2.364

* Except supply of electrical energy, gas, steam, air conditioning and water.

(..) Data not available due to statistical secrecy.

4. Turnover indices: General and by branch of activity Originals series

	Index	Rate (%)		Effect
		Annual	Year-to-date average	Annual
GENERAL INDEX	106.1	-2.1	1.3	
B. Mining and quarrying industries	80.0	-13.4	-3.5	-0.113
Extraction of anthracite, coal and lignite	39.3	-56.1	-39.5	..
Extraction of crude oil, petroleum and natural gas
Other mining and quarrying	86.4	-1.5	7.9	-0.010
C. Manufacturing industry	106.3	-2.0	1.3	-1.944
Food industry	118.0	-0.3	1.5	-0.053
Manufacture of beverages	95.0	-1.6	-2.2	-0.048
Manufacture of tobacco	76.9	-17.0	-17.2	-0.033
Textile industry	111.3	3.3	3.0	0.035
Manufacture of garments	100.0	10.1	4.7	0.110
Leather and footwear industry	98.3	-5.1	1.1	-0.042
Manufacture of wood and of products of wood and cork, except furniture; basketmaking and wickerwork	89.4	0.2	4.4	0.002
Paper industry	101.6	1.1	2.1	0.029
Graphic arts and reproduction of recorded media	75.8	-1.8	-0.4	-0.020
Manufacture of coke and refined petroleum products	105.8	-23.6	-23.2	-2.364
Chemical industry	103.3	-1.8	0.0	-0.135
Manufacture of pharmaceutical products	98.3	-2.4	4.0	-0.075
Rubber and plastic material transformation industry	104.4	0.1	2.9	0.006
Manufacture of other non-metallic ore products	80.9	-1.1	5.6	-0.040
Metallurgy; manufacture of iron, steel and ferro-alloy products	97.1	-8.6	4.0	-0.554
Manufacture of metal products, except machinery and equipment	95.0	1.9	4.4	0.117
Manufacture of computer, electronic and optical products	59.0	-8.4	7.2	-0.074
Manufacture of electrical material and equipment	98.6	-2.2	5.2	-0.076
Manufacture of machinery and equipment n.e.c.	111.5	3.4	4.8	0.128
Manufacture of motor vehicles, trailers and semi-trailers	145.0	11.7	14.7	1.604
Manufacture of other transport material	84.6	-22.0	3.6	-0.620
Manufacture of furniture	88.9	-0.9	5.9	-0.011
Other manufacturing industries	109.8	3.5	5.5	0.030
Repair and installation of machinery and equipment	95.1	11.7	9.5	0.140

(..) Data not available due to statistical secrecy.

5. Turnover indices: General and by markets Originals series

	Index	Rate (%)	
		Annual	Year-to-date average
GENERAL INDEX	106.1	-2.1	1.3
1. Domestic market	92.0	-3.1	-1.7
2. Foreign market	128.3	-0.9	5.7
2.1. Foreign market, euro zone	127.3	2.5	7.9
2.2. Foreign market, non euro zone	130.4	-5.5	2.9

6. Turnover indices: National and by Autonomous Community

Originals series

	Index	Rate (%)	
		Annual	Year-to-date average
NATIONAL	106.1	-2.1	1.3
Andalucía	103.5	-6.3	-5.0
Aragón	109.6	-3.5	10.1
Asturias, Principado de	82.5	-9.4	-1.7
Balears, Illes	59.9	-10.2	0.6
Canarias	56.0	-29.1	-28.2
Cantabria	101.3	-5.9	0.8
Castilla y León	120.5	14.4	7.6
Castilla - La Mancha	107.8	-2.4	-2.7
Cataluña	109.6	-1.6	1.1
Comunitat Valenciana	118.7	2.8	6.2
Extremadura	112.0	-2.4	6.2
Galicia	91.0	-5.1	0.3
Madrid, Comunidad de	90.8	-6.0	3.6
Murcia, Región de	136.7	-5.1	-3.0
Navarra, Comunidad Foral de	105.0	1.4	3.5
País Vasco	102.4	-4.2	-0.7
Rioja, La	107.1	-1.7	6.6

For further information see **INEbase** - www.ine.es/en/ All press releases at: www.ine.es/en/prensa/prensa_en.htm

Press Office: Telephone numbers: 91 583 93 63 / 94 08 – Fax: 91 583 90 87 - gprensa@ine.es

Information Area: Telephone number: 91 583 91 00 – Fax: 91 583 91 58 – www.ine.es/infoine