

19 April 2013

**Industrial New Orders Received Indices (INORI). Base 2010**  
February 2013. *Provisional data*

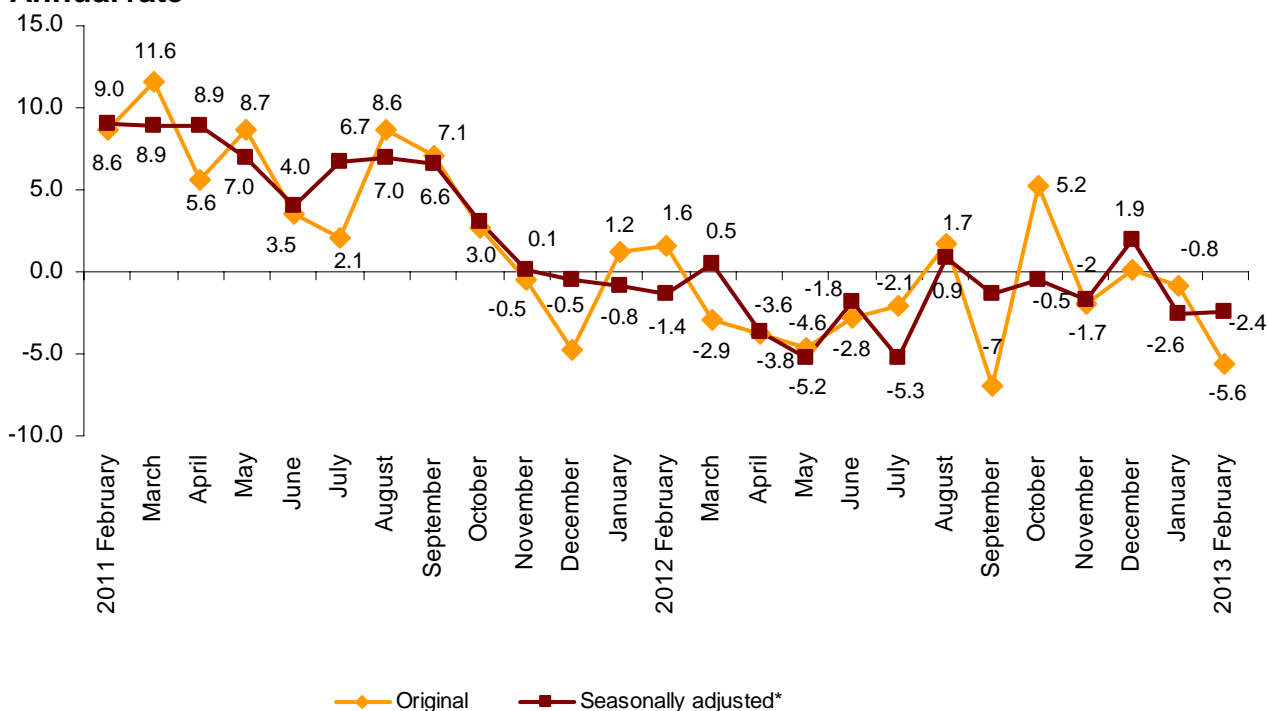
**The annual rate of the General Industrial New Orders Received Index stands at  $-5.6\%$ , in the original series and  $-2.4\%$  in the seasonally adjusted series**

**The monthly variation stands at  $0.3\%$ , adjusted for the seasonal and calendar effects**

The Industrial New Orders Received Index (INORI) experienced an annual variation of  $-5.6\%$  in February, almost four points below that in January.

After adjusting the seasonal and calendar effects, the annual rate stood at  $-2.4\%$ , slightly higher than that in January.

**General Index of Industrial New Orders Received**  
**Annual rate**



\* Seasonally adjusted: Adjusted for seasonal and calendar effects.

## Annual evolution of the New Orders Received by economic destination of the goods

All the industrial sectors registered negative annual rates in February, except for Capital Goods (3.2%).

The sector showing the greatest increase was Non-durable Consumer Goods, with an annual variation of -16.5%, followed by Intermediate Goods (-10.2%) and Energy (-8.7%).

After eliminating seasonal and calendar effects, most of the sectors showed negative rates, as compared with February of the previous year, highlighting Durable Consumer Goods (-15.5%).

## National indices by economic destination

	Original index	Annual rate	Seasonally adjusted index	Annual rate
GENERAL INDEX	97.5	-5.6	102.1	-2.4
1. CONSUMER GOODS	89.1	-4.7	99.5	0.8
1.1. Durable consumer goods	65.9	-16.5	67.5	-15.5
1.2. Non-durable consumer goods	91.5	-3.7	101.0	0.9
2. Capital goods	98.5	3.2	100.9	3.8
3. Intermediate goods	93.5	-10.2	93.9	-9.2
4. Energy*	145.2	-8.7	154.7	-8.4

\* Except for Electricity, gas, steam and air conditioning supply.

In a more detailed analysis, it can be observed the activities that showed the highest and lowest annual rates in the month of February.

## Activities with the highest annual rates

	Original	% of variation
Manufacture of leather and leather products	109.4	17.7
Manufacture of grain mill products, starches, and food for animals	114.7	17.5
Repair and installation of machinery and equipment	115.8	15.7
Manufacture of machinery and equipment n.e.c.	134.3	14.5
Manufacture of beverages	79.2	9.4

## Activities with the lowest annual rates

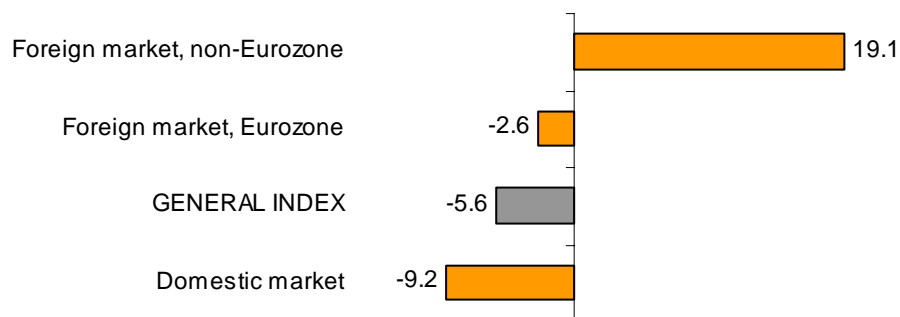
	Original	% of variation
Manufacture of electronic components, assembled printed circuits, and magnetic ar	48.6	-80
Manufacture of consumer electronics, optical instruments and photographic equipment	6.4	-64.0
Manufacture of motorcycles, bicycles, vehicles for the disabled and others	34.8	-57.6
Extraction of anthracite, coal and lignite	72.6	-55.3
Manufacture of computers, peripherals and telecommunications equip. appliances for measuring and navigation; radiation and medical equip.	65.0	-31.4

### Annual evolution of New Orders Received by destination market

Indices obtained according to the market of which the order was received decreased their rate, as compared with the same month of the previous year in all cases, except for foreign market in the non-Eurozone that rose by 19.1%.

The greatest drop was registered in new orders received from the Domestic market, registering a -9.2% rate.

#### Annual rate of INORI General index and by market

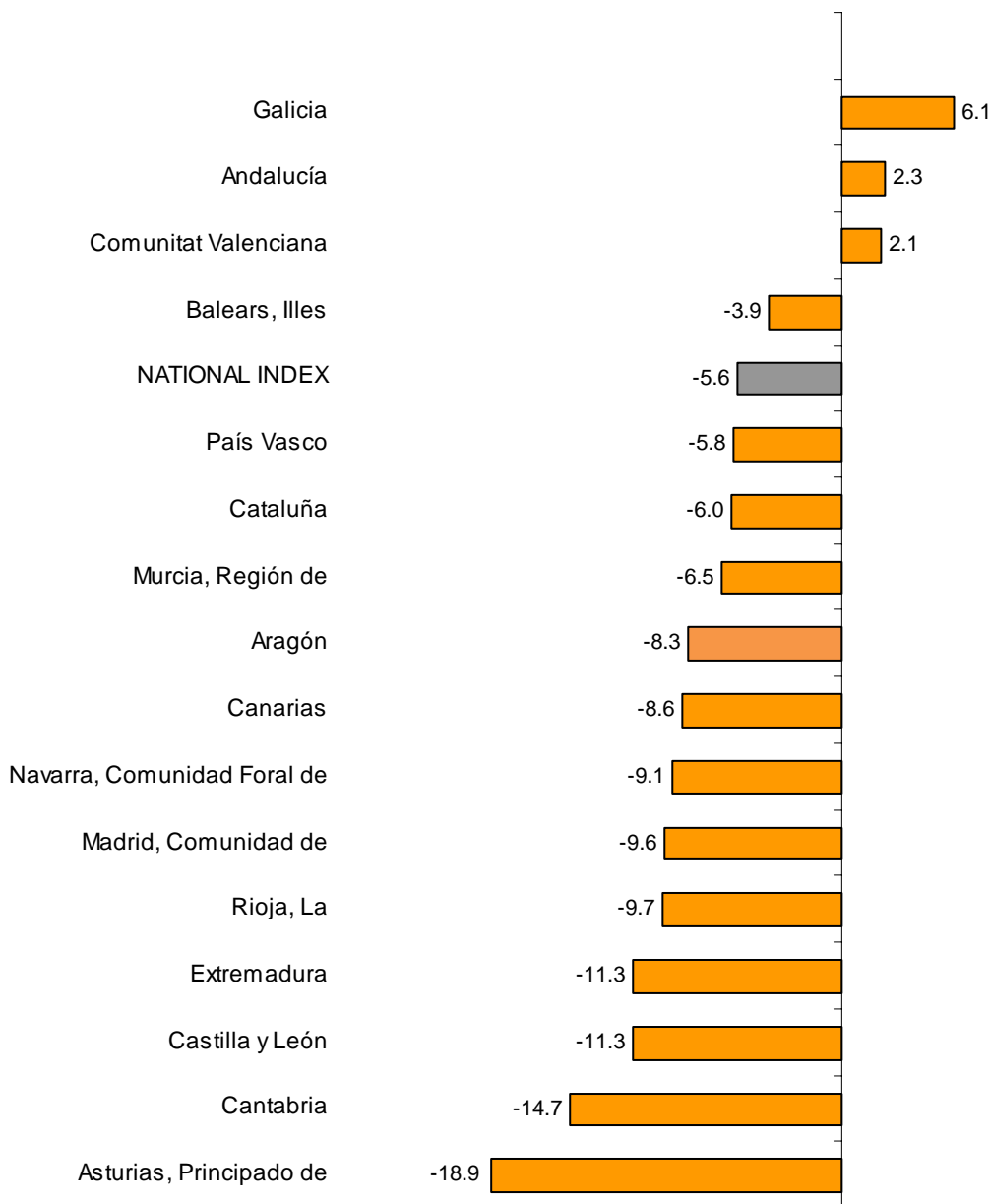


**Results by Autonomous Community. Annual variation rate of the new orders received.**

Most of the Autonomous Communities showed decreases in their new orders received, as compared with February 2012.

The greatest drops were registered in Castilla-La Mancha (-19.7%) and Principado de Asturias (-18.9%). In turn, Galicia (6.1%) showed the greatest increase.

**General Index by Autonomous Community  
Annual rate of New Orders Received**

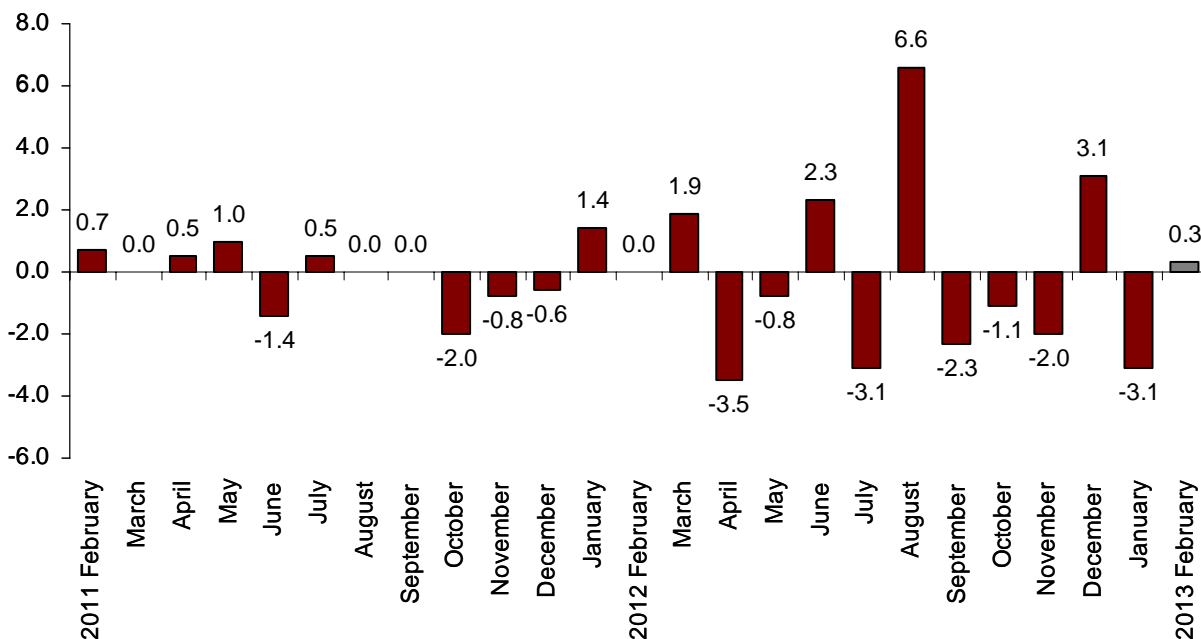


**Monthly evolution of the INORI adjusted for the seasonal and calendar effects**

The General Industrial New Orders Received Index variation between February and January, after adjusting the seasonal and calendar effects was 0.3%. This rate was more than three points higher than that in January.

**General Index of New Orders Received**

**Adjusted the seasonal and calendar effects. Monthly rate**

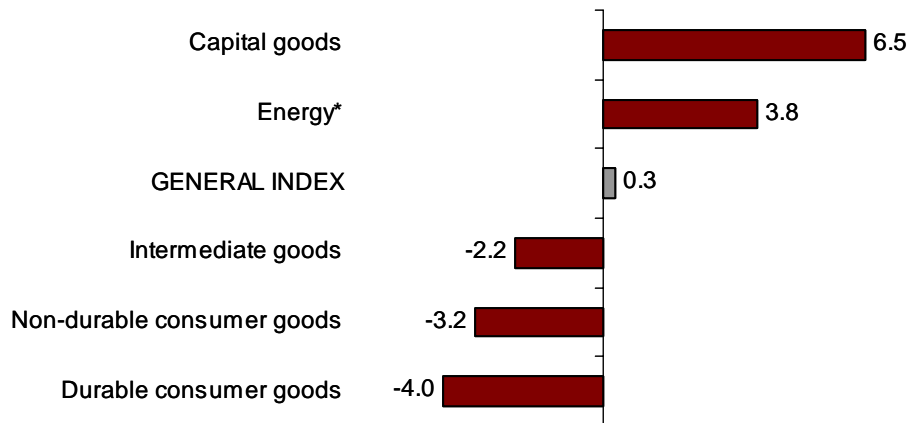


**Monthly evolution by destination of the goods**

After adjusting the seasonal and calendar effects, the industrial sectors with a positive monthly rate were Capital Goods (6.5%) and Energy (3.8%). The other three sectors showed negative rates.

**INORI Monthly rate**

**General index and by economic destination adjusted for seasonal and calendar effects**



\* Except for Electricity, gas, steam and air conditioning supply.

## Indices of Industrial New Orders Received. Base 2010

Provisional data

### 1. Indices of New Orders Received by economic destination<sup>1</sup>

	Index	% of variation		Effect
		Annual	Monthly	Annual
<b>GENERAL INDEX</b>	<b>97.5</b>	<b>-5.6</b>	<b>-4.4</b>	
<b>1. CONSUMER GOODS</b>	<b>89.1</b>	<b>-4.7</b>	<b>-10.1</b>	<b>-1.324</b>
<b>1.1. DURABLE CONSUMER GOODS</b>	<b>65.9</b>	<b>-16.5</b>	<b>0.5</b>	<b>-0.362</b>
- Manufacture of consumer electronics, optical instruments and photographic equipment	5.3	-73.2	-17.7	-0.045
- Manufacture of household appliances	84.0	-11.2	-3.0	-0.075
- Manufacture of motorcycles, bicycles, vehicles for the disabled and others	36.4	-38.8	4.8	-0.041
- Manufacture of furniture	73.2	-14.7	5.4	-0.181
- Manufacture of jewellery, costume jewellery and musical instruments	71.9	-15.6	-18.4	-0.021
<b>1.2. NON-DURABLE CONSUMER GOODS</b>	<b>91.5</b>	<b>-3.7</b>	<b>-10.7</b>	<b>-0.962</b>
- Food industries (except grain mill products and food for animals)	97.8	-2.0	-6.9	-0.290
- Manufacture of beverages	78.0	1.5	-1.1	0.038
- Manufacture of tobacco	83.8	-3.9	1.6	-0.007
- Manufacture of knitted fabrics, carpets, rope, non-woven fabrics, textile products for technical use and industrial and other textile products	95.1	-4.4	-7.3	-0.028
- Manufacture of garments	79.0	-9.8	-15.7	-0.108
- Leather and footwear industry	86.0	-7.7	-1.8	-0.059
- Graphic arts and reproduction of recorded media	68.5	-9.9	-56.8	-0.119
- Manufacture of cleaning articles, perfumes and cosmetics	93.5	-3.2	-4.6	-0.043
- Manufacture of pharmaceutical products	94.8	-9.2	-6.3	-0.311
- Manufacture of sporting goods; games and toys and Other manufacturing industries	80.7	-10.2	-4.0	-0.034
<b>2. CAPITAL GOODS</b>	<b>98.5</b>	<b>3.2</b>	<b>5.4</b>	<b>0.695</b>
- Manufacture of metal products for construction, containers made of metal, steam generators, weapons and ammunition	80.6	9.1	6.0	0.193
- Manufacture of computers, peripherals and telecommunications equipment; appliances for measuring and navigation; radiation and medical and therapeutic equipment	73.7	-11.5	13.3	-0.077
- Manufacture of machinery and equipment n.e.c.	95.5	-2.7	3.9	-0.096
- Manufacture of motor vehicles, trailers and semi-trailers	104.3	0.9	-2.3	0.108
- Naval, railway, aircraft and spacecraft construction. Combat vehicles	115.5	69.2	98.6	1.206
- Manufacture of medical and dental instruments and supplies	84.7	-11.6	-1.4	-0.037
- Repair and installation of machinery and equipment	84.6	-32.5	-22.9	-0.602
<b>3. INTERMEDIATE GOODS</b>	<b>93.5</b>	<b>-10.2</b>	<b>-7.1</b>	<b>-3.856</b>
- Other mining and quarrying	82.4	-9.3	5.3	-0.067
- Manufacture of grain mill products, starches, and food for animals	122.6	7.1	-8.3	0.197
- Preparation and spinning of textile fibres. Manufacture of woven textiles. Textile finishings	91.5	-8.1	-2.9	-0.041
- Wood and cork industry	82.2	-12.9	-15.5	-0.173
- Paper industry	98.6	-7.0	-10.7	-0.200
- Chemical industry except cleaning articles, perfumes and cosmetics	100.4	-9.2	-8.6	-0.639
- Rubber and plastic material transformation industry	90.9	-7.6	-4.4	-0.293
- Manufacture of other non-metallic ore products	70.6	-12.8	0.2	-0.465
- Metallurgy; manufacture of iron, steel and ferro-alloy products	99.6	-8.2	-2.5	-0.568
- Forging, stamping, embossing and rolling of metals. - Manufacture of tools, hardware goods, containers and other metal products	100.0	-10.6	-4.8	-0.495
- Manufacture of electronic components, assembled printed circuits, and magnetic and optical media	44.1	-80.1	-9.3	-0.558
- Manufacture of electrical material and equipment except household appliances	80.4	-19.0	-22.1	-0.552
<b>4. ENERGY (Except supply of electrical energy, gas, steam, air conditioning)</b>	<b>145.2</b>	<b>-8.7</b>	<b>1.2</b>	<b>-1.072</b>
- Extraction of anthracite, coal and lignite	59.8	-64.2	-16.5	..
- Extraction of crude oil, petroleum and natural gas	..	..	..	..
- Manufacture of coke and refined petroleum products	146.1	-8.1	1.5	-0.983

<sup>1</sup> Regulation (EC) no. 656/2007 of the Commission of 14 June 2007.

(..) Data not available due to statistical secrecy.

## 2. Indices of New Orders Received adjusted for calendar effects

	Original	% of variation		Adjusted	% of variation	
	Index	Annual	Monthly	Index	Annual	Monthly
<b>GENERAL INDEX</b>	<b>97.5</b>	<b>-5.6</b>	<b>-4.4</b>	<b>98.3</b>	<b>-2.5</b>	<b>-1.2</b>
1. Consumer goods	89.1	-4.7	-10.1	90.3	0.2	-6.6
1.1. Durable consumer goods	65.9	-16.5	0.5	66.1	-15.6	3.9
1.2. Non-durable consumer goods	91.5	-3.7	-10.7	92.6	0.6	-7.3
2. Capital goods	98.5	3.2	5.4	98.7	3.9	7.5
3. Intermediate goods	93.5	-10.2	-7.1	93.9	-9.3	-4.0
4. Energy*	145.2	-8.7	1.2	145.4	-8.5	1.9

\*Except supply of electrical energy, gas, steam and air conditioning.

## 3. Indices of New Orders Received seasonally adjusted

	Original	% of variation		Adjusted	% of variation	
	Index	Annual	Monthly	Index	Annual	Monthly
<b>GENERAL INDEX</b>	<b>97.5</b>	<b>-5.6</b>	<b>-4.4</b>	<b>102.1</b>	<b>-2.4</b>	<b>0.3</b>
1. Consumer goods	89.1	-4.7	-10.1	99.5	0.8	-0.7
1.1. Durable consumer goods	65.9	-16.5	0.5	67.5	-15.5	-4.0
1.2. Non-durable consumer goods	91.5	-3.7	-10.7	101.0	0.9	-3.2
2. Capital goods	98.5	3.2	5.4	100.9	3.8	6.5
3. Intermediate goods	93.5	-10.2	-7.1	93.9	-9.2	-2.2
4. Energy*	145.2	-8.7	1.2	154.7	-8.4	3.8

\*Except supply of electrical energy, gas, steam and air conditioning.

#### 4. General Index of Industrial New Orders Received seasonally adjusted

		% of variation		
		Annual <sup>1</sup>	Quarterly <sup>2</sup>	Monthly <sup>3</sup>
	2009	-22.0		
	2010	6.7		
	2011	5.7		
	2012	-1.5		
	2013	-2.5		
2011	TI	8.9	2.9	
	TII	6.6	0.9	
	TIII	6.8	-0.1	
	TIV	0.9	-2.7	
2012	TI	-0.6	1.4	
	TII	-3.5	-2.1	
	TIII	-1.9	1.6	
	TIV	-0.1	-0.9	
2013	TI	-2.5	-1.6	
2012	FEB	-1.4		0.0
	MAR	0.5		1.9
	APR	-3.6		-3.5
	MAY	-5.2		-0.8
	JUN	-1.8		2.3
	JUL	-5.3		-3.1
	AUG	0.9		6.6
	SEP	-1.4		-2.3
	OCT	-0.5		-1.1
	NOV	-1.7		-2.0
2013	DEC	1.9		3.1
	JAN	-2.6		-3.1
	FEB	-2.4		0.3

Note:

<sup>1</sup> **Annual rate:** Variation of a period over the same period of the previous year.

<sup>2</sup> **Quarterly rate:** Variation of a quarter over the previous quarter.

In the present quarter it is the variation to date over the previous quarter.

<sup>3</sup> **Monthly rate:** Variation of a month over the previous month.

## 5. Indices by Autonomous Communities

	Index	% of variation		
		Annual	Monthly	Average to date
<b>NATIONAL INDEX</b>	<b>97.5</b>	<b>-5.6</b>	<b>-4.4</b>	<b>-3.2</b>
Andalucía	111.1	2.3	-0.5	2.6
Aragón	88.9	-8.3	-7.6	-5.9
Asturias, Principado de	82.1	-18.9	-7.3	-13.7
Balears, Illes	79.2	-3.9	9.1	2.5
Canarias	97.6	-8.6	-6.7	-5.8
Cantabria	88.4	-14.7	-3.1	-9.1
Castilla y León	89.3	-11.3	2.6	-9.1
Castilla - La Mancha	103.6	-19.7	1.8	-16.3
Cataluña	100.6	-6.0	-5.1	-1.2
Comunitat Valenciana	102.3	2.1	-5.5	3.5
Extremadura	92.0	-11.3	-5.1	-6.7
Galicia	101.2	6.1	3.3	5.7
Madrid, Comunidad de	83.1	-9.6	-21.4	-10.0
Murcia, Región de	109.2	-6.5	0.1	-1.2
Navarra, Comunidad Foral de	87.2	-9.1	-2.5	-6.9
País Vasco	92.8	-5.8	-3.6	-5.5
Rioja, La	89.7	-9.7	0.7	-3.1

## 6. National Indices by markets

	Index	% of variation		Average to date
		Annual	Monthly	
<b>GENERAL INDEX</b>	<b>97.5</b>	<b>-5.6</b>	<b>-4.4</b>	<b>-3.2</b>
1. Domestic market	88.4	-9.2	-5.6	-5.9
2. Foreign market	113.2	4.4	-1.7	4.7
2.1. Foreign market, euro zone	104.6	-2.6	-5.3	0.7
2.2. Foreign market, non-euro zone	130.4	19.1	6.2	12.2

## 7. Indices of Industrial New Orders Received by branch of activity (CNAE 2009)

	Index	% variation		Effect
		Annual	Monthly	Annual
<b>GENERAL INDEX</b>	<b>97.5</b>	<b>-5.6</b>	<b>-4.4</b>	
<b>B. Mining and quarrying industries</b>	<b>85.4</b>	<b>-16.1</b>	<b>0.9</b>	<b>-0.157</b>
Extraction of anthracite, coal and lignite	59.8	-64.2	-16.5	..
Extraction of crude oil, petroleum and natural gas	..	..	..	..
Other mining and quarrying	82.4	-9.3	5.3	-0.067
<b>C. Manufacturing industry</b>	<b>97.6</b>	<b>-5.5</b>	<b>-4.4</b>	<b>-5.399</b>
Food industry	101.3	-0.5	-7.1	-0.093
Manufacture of beverages	78.0	1.5	-1.1	0.038
Manufacture of tobacco	83.8	-3.9	1.6	-0.007
Textile industry	93.5	-6.0	-5.4	-0.069
Manufacture of garments	79.0	-9.8	-15.7	-0.108
Leather and footwear industry	86.0	-7.7	-1.8	-0.059
Manufacture of wood and of products of wood and cork, except furniture; basketmaking and wickerwork	82.2	-12.9	-15.5	-0.173
Paper industry	98.6	-7.0	-10.7	-0.200
Graphic arts and reproduction of recorded media	68.5	-9.9	-56.8	-0.119
Manufacture of coke and refined petroleum products	146.1	-8.1	1.5	-0.983
Chemical industry	99.2	-8.3	-7.9	-0.682
Manufacture of pharmaceutical products	94.8	-9.2	-6.3	-0.311
Rubber and plastic material transformation industry	90.9	-7.6	-4.4	-0.293
Manufacture of other non-metallic ore products	70.6	-12.8	0.2	-0.465
Metallurgy; manufacture of iron, steel and ferro-alloy products	99.6	-8.2	-2.5	-0.568
Manufacture of metal products, except machinery and equipment	92.1	-4.5	-1.2	-0.302
Manufacture of computer, electronic and optical products	52.2	-47.7	7.5	-0.680
Manufacture of electrical material and equipment	81.1	-17.5	-18.9	-0.627
Manufacture of machinery and equipment n.e.c.	95.5	-2.7	3.9	-0.096
Manufacture of motor vehicles, trailers and semi-trailers	104.3	0.9	-2.3	0.108
Manufacture of other transport material	110.3	63.0	94.9	1.165
Manufacture of furniture	73.2	-14.7	5.4	-0.181
Other manufacturing industries	80.6	-11.7	-5.7	-0.092
Repair and installation of machinery and equipment	84.6	-32.5	-22.9	-0.602

(..) Data not available due to statistical secrecy.

For further information see **INEbase - [www.ine.es/en/](http://www.ine.es/en/)** All press releases at: **[www.ine.es/en/prensa/prensa\\_en.htm](http://www.ine.es/en/prensa/prensa_en.htm)**

**Press Office:** Telephone numbers: 91 583 93 63 / 94 08 – Fax: 91 583 90 87 - **[gprensa@ine.es](mailto:gprensa@ine.es)**

**Information Area:** Telephone number: 91 583 91 00 – Fax: 91 583 91 58 – **[www.ine.es/infoine](http://www.ine.es/infoine)**