

17 July 2015

Industrial New Orders Received Indices (INORI). Base 2010
May 2015. Provisional data

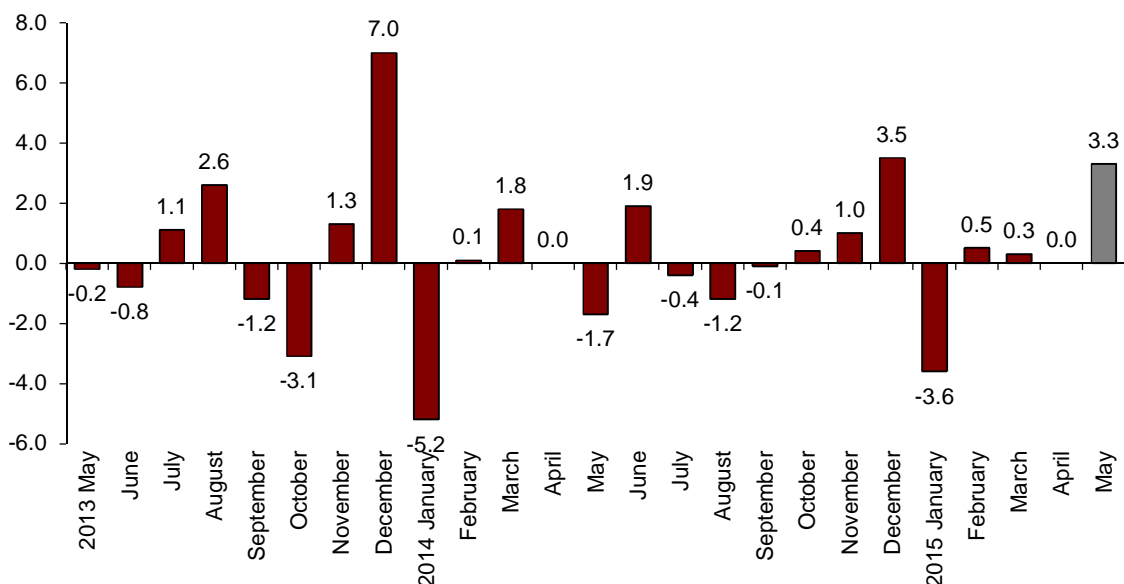
The monthly variation of the General Industrial New Orders Received Index stands at 3.3% after adjusting for the seasonal and calendar effects

The annual rate stands at 5.6% in the series adjusted for the seasonal and calendar effects and at 3.5% in the original series

Monthly evolution of New Orders Received

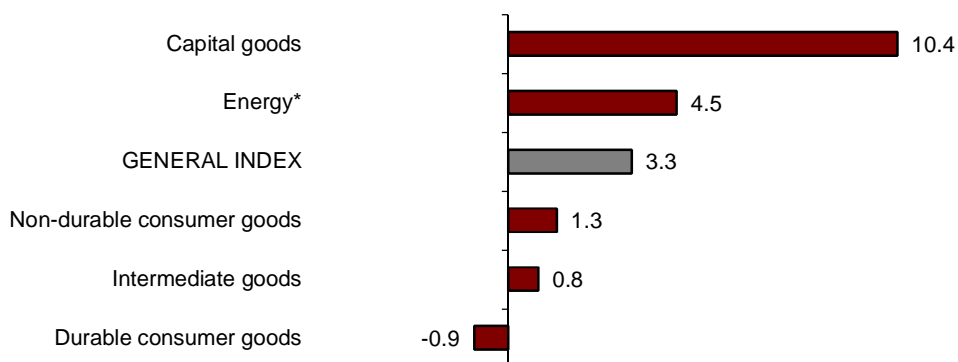
The monthly variation of the Industrial New Orders Received Index (INORI) between May and April stood at 3.3%, after adjusting for the seasonal and calendar effects. This rate was 3.3 points higher than that registered the previous month.

New Orders Received General Index
Adjusted for seasonal and calendar effects. Monthly rate



By economic destination of the goods, four out of five sectors registered positive monthly rates, worth noting were the increases registered in Capital goods (10.4%) and Energy (4.5%). The only sector that registered a decrease was Durable consumer goods (-0.9%).

**New Orders Received indices: General and by economic destination
Adjusted for seasonal and calendar effects. Monthly rate**



*Energy does not include electric power supply, nor water, steam, gas or air-conditioning supply.

A more detailed analysis showed the branches of activity with the highest and the lowest monthly rates in May.

**Branches of activity with the highest monthly rates of the Industry New Orders Received Index,
Adjusted for seasonal and calendar effects**

Branch of activity (Section of the CNAE 2009)	Monthly rate (%)
Mining of coal and lignite	30.0
Manufacture of fabricated metal products, except machinery and equipment	21.4
Manufacture of electrical equipment	8.4

**Branches of activity with the lowest monthly rates of the Industry New Orders Received Index,
Adjusted for seasonal and calendar effects**

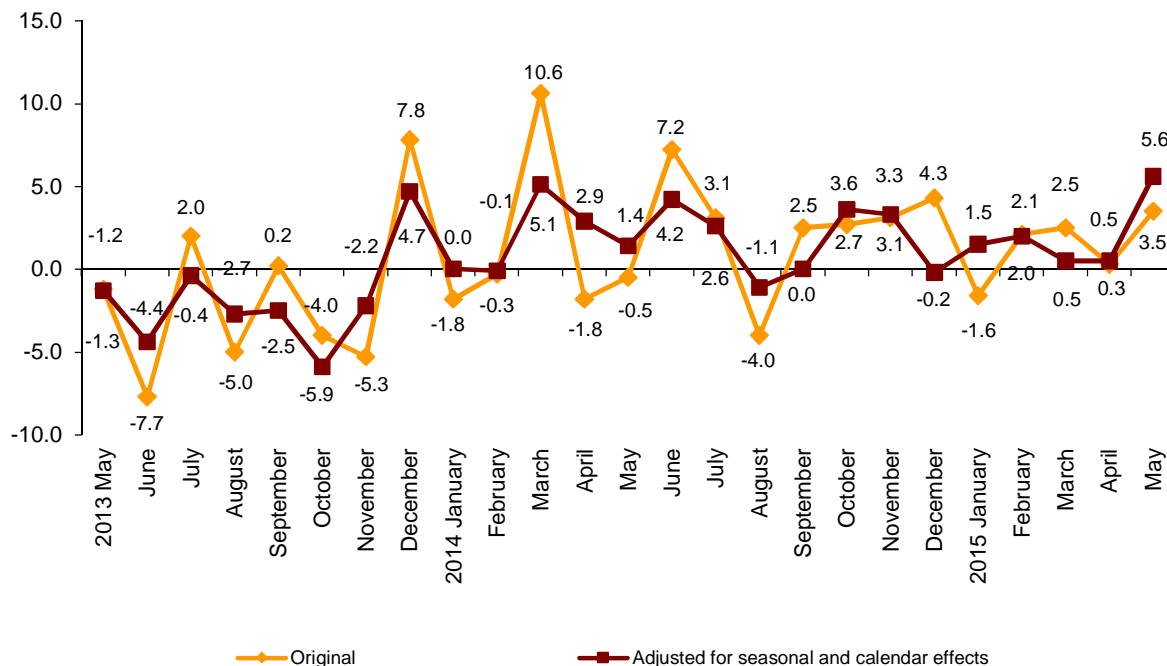
Branch of activity (Section of the CNAE 2009)	Monthly rate (%)
Repair and installation of machinery and equipment	-6.8
Manufacture of tobacco products	-4.0
Manufacture of furniture	-2.3

Annual evolution of the New Orders Received

The Industrial New Orders Received Index (INORI), after adjusting for seasonal and calendar effects, registered a variation of 5.6% in May, as compared with the same month of the previous year. This rate was 5.1 points higher than that registered in April 2015.

The original series of the INORI registered an annual variation of 3.5%, that is, 3.2 points higher than that registered in April 2015.

Industry New Orders Received General Index Annual rates



By economic destination of the goods, four out of five sectors recorded positive rates, after adjusting for seasonal and calendar effects. Capital goods (24.0%) registered the greatest increase.

Annual rates of indices of the New Orders Received: General and by economic destination of the goods

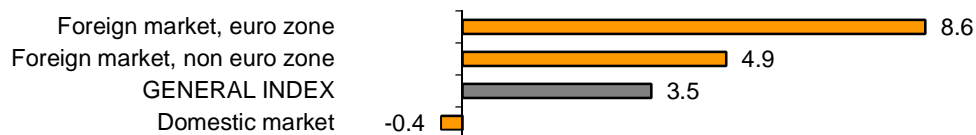
	Original index	Index adjusted for seasonal and calendar effects
	Annual rate (%)	Annual rate (%)
GENERAL INDEX	3.5	5.6
1. Consumer goods	-1.1	1.5
1.1. Durable consumer goods	-2.1	0.9
1.2. Non-durable consumer goods	-1.1	1.7
2. Capital goods	21.8	24.0
3. Intermediate goods	3.0	5.4
4. Energy*	-19.7	-19.5

* Except supply of electrical energy, gas, steam, air conditioning and water.

Annual evolution of New Orders Received by destination market. Original series

By geographical destination, in May, two out of three markets registered positive annual rates. Worth noting was the increase of 8.6% in the euro zone of the foreign market.

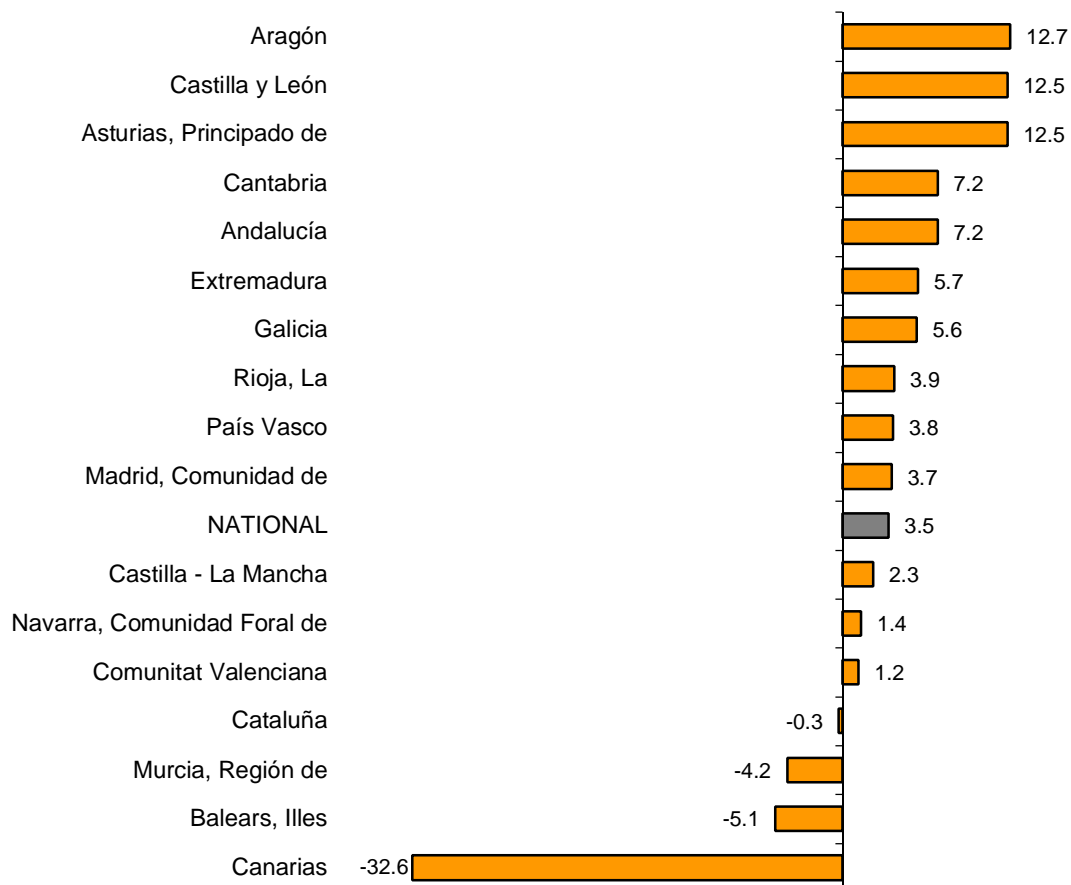
**Industrial new orders received indices: General and by market
Annual rate**



Results by Autonomous Community. Annual variation rate of the Industrial New Orders Received. Original series

New orders received increased in the annual rate in 13 Autonomous Communities, as compared to 2014, and decreased in the remaining four. The greatest increase was recorded in Aragón (12.7%) and the greatest decrease was registered in Canarias (-32.6%).

**General indices: National and by Autonomous Community
Annual rate of Industry New Orders Received**



Industrial New Orders Received Index. Base 2010

May 2015

Provisional data

1. New Orders Received indices¹ Adjusted for seasonal and calendar effects

	Index	Rate (%)		
		Monthly	Annual	Year-to-date average
GENERAL INDEX	107.3	3.3	5.6	2.0
1. Consumer goods	99.9	1.0	1.5	1.5
1.1. Durable consumer goods	69.0	-0.9	0.9	4.0
1.2. Non-durable consumer goods	103.4	1.3	1.7	1.4
2. Capital goods	126.2	10.4	24.0	12.1
3. Intermediate goods	98.9	0.8	5.4	3.2
4. Energy*	120.0	4.5	-19.5	-22.2

¹ Regulation (EC) no. 656/2007 of the Commission of 14 June 2007.

* Except supply of electrical energy, gas, steam, air conditioning and water.

2. New Orders Received indices¹ Adjusted for calendar effects

	Index	Rate (%)	
		Annual	Year-to-date average
GENERAL INDEX	112.2	6.2	2.0
1. Consumer goods	101.9	1.6	1.7
1.1. Durable consumer goods	71.4	0.9	4.4
1.2. Non-durable consumer goods	105.1	1.8	1.5
2. Capital goods	130.7	24.5	11.6
3. Intermediate goods	106.0	5.9	3.2
4. Energy*	124.4	-19.3	-22.5

¹ Regulation (EC) no. 656/2007 of the Commission of 14 June 2007.

* Except supply of electrical energy, gas, steam, air conditioning and water.

3. New Orders Received indices: General and by activities Originals series

	Index	Rate (%)		Effect Annual
		Annual	Year-to-date average	
GENERAL INDEX	108.2	3.5	1.4	
1. CONSUMER GOODS	98.0	-1.1	1.1	-0.338
1.1. Durable consumer goods	68.4	-2.1	3.7	-0.040
- Manufacture of consumer electronics, optical instruments and photographic equipment	10.5	23.2	20.4	0.006
- Manufacture of household appliances	81.8	-2.8	2.1	-0.017
- Manufacture of motorcycles, bicycles, vehicles for the disabled and others	23.2	-18.9	-13.9	-0.009
- Manufacture of furniture	77.7	-2.6	4.9	-0.029
- Manufacture of jewellery, costume jewellery and musical instruments	90.7	6.5	4.9	0.008
1.2. Non-durable consumer goods	101.0	-1.1	0.9	-0.297
- Food industries (except grain mill products and food for animals)	108.3	-1.4	1.1	-0.215
- Manufacture of beverages	96.9	-7.3	-4.4	-0.253
- Manufacture of tobacco	70.3	-29.3	-18.2	-0.062
- Manufacture of knitted fabrics, carpets, rope, non-woven fabrics, textile products for technical use and industrial and other textile products	103.2	-0.1	1.8	0.000
- Manufacture of garments	79.0	1.0	1.4	0.010
- Leather and footwear industry	94.2	10.1	3.0	0.071
- Graphic arts and reproduction of recorded media	73.4	-7.0	0.4	-0.086
- Manufacture of cleaning articles, perfumes and cosmetics	95.1	7.0	3.3	0.085
- Manufacture of pharmaceutical products	100.8	5.3	4.3	0.163
- Manufacture of sporting goods; games and toys and Other manufacturing industries	93.6	-2.6	1.2	-0.009
2. CAPITAL GOODS	126.6	21.8	11.0	5.082
- Manufacture of metal products for construction, containers made of metal, steam generators, weapons and ammunition	125.6	95.5	33.3	1.734
- Manufacture of computers, peripherals and telecommunications equipment; appliances for measuring and navigation; radiation and medical and therapeutic equipment	85.3	18.5	5.3	0.105
- Manufacture of machinery and equipment n.e.c.	126.1	13.6	12.5	0.542
- Manufacture of motor vehicles, trailers and semi-trailers	141.0	15.0	14.3	2.009
- Naval, railway, aircraft and spacecraft construction. Combat vehicles	98.5	32.7	-17.3	0.612
- Manufacture of medical and dental instruments and supplies	107.8	3.1	1.5	0.011
- Repair and installation of machinery and equipment	97.8	5.1	15.3	0.069
3. INTERMEDIATE GOODS	102.0	3.0	2.6	1.052
- Other mining and quarrying	86.8	7.4	14.6	0.047
- Manufacture of grain mill products, starches, and food for animals	116.7	-3.7	-0.8	-0.109
- Preparation and spinning of textile fibres. Manufacture of woven textiles. Textile finishings	96.8	0.9	-1.2	0.004
- Wood and cork industry	91.6	4.2	4.3	0.052
- Paper industry	101.9	0.1	0.1	0.002
- Chemical industry except cleaning articles, perfumes and cosmetics	108.3	1.1	-2.2	0.074
- Rubber and plastic material transformation industry	102.4	-0.4	1.7	-0.017
- Manufacture of other non-metallic ore products	83.7	1.9	6.0	0.068
- Metallurgy; manufacture of iron, steel and ferro-alloy products	106.1	10.1	8.4	0.615
- Forging, stamping, embossing and rolling of metals. - Manufacture of tools, hardware goods, containers and other metal products	112.1	2.7	1.7	0.121
- Manufacture of electronic components, assembled printed circuits, and magnetic and optical media	43.4	-15.6	34.4	-0.025
- Manufacture of electrical material and equipment except household appliances	96.6	8.6	1.5	0.221
4. ENERGY*	123.5	-19.7	-22.6	-2.322
- Extraction of anthracite, coal and lignite	100.6	-3.9	-1.3	..
- Extraction of crude oil, petroleum and natural gas
- Manufacture of coke and refined petroleum products	123.6	-19.8	-22.6	-2.284

* Except supply of electrical energy, gas, steam, air conditioning and water.

(..) Data not available due to statistical secrecy.

4. New Orders Received indices: General and by branch of activity Originals series

	Index	Rate (%)		Effect Annual
		Annual	Year-to-date average	
GENERAL INDEX	108.2	3.5	1.4	
B. Mining and quarrying industries	91.5	1.1	7.5	0.009
Extraction of anthracite, coal and lignite	100.6	-3.9	-1.3	..
Extraction of crude oil, petroleum and natural gas
Other mining and quarrying	86.8	7.4	14.6	0.047
C. Manufacturing industry	108.4	3.5	1.3	3.467
Food industry	109.5	-1.7	0.8	-0.324
Manufacture of beverages	96.9	-7.3	-4.4	-0.253
Manufacture of tobacco	70.3	-29.3	-18.2	-0.062
Textile industry	100.4	0.5	0.3	0.004
Manufacture of garments	79.0	1.0	1.4	0.010
Leather and footwear industry	94.2	10.1	3.0	0.071
Manufacture of wood and of products of wood and cork, except furniture; basketmaking and wickerwork	91.6	4.2	4.3	0.052
Paper industry	101.9	0.1	0.1	0.002
Graphic arts and reproduction of recorded media	73.4	-7.0	0.4	-0.086
Manufacture of coke and refined petroleum products	123.6	-19.8	-22.6	-2.284
Chemical industry	105.9	2.0	-1.4	0.159
Manufacture of pharmaceutical products	100.8	5.3	4.3	0.163
Rubber and plastic material transformation industry	102.4	-0.4	1.7	-0.017
Manufacture of other non-metallic ore products	83.7	1.9	6.0	0.068
Metallurgy; manufacture of iron, steel and ferro-alloy products	106.1	10.1	8.4	0.615
Manufacture of metal products, except machinery and equipment	117.6	29.4	11.0	1.855
Manufacture of computer, electronic and optical products	59.7	11.5	10.5	0.086
Manufacture of electrical material and equipment	93.7	6.5	1.6	0.204
Manufacture of machinery and equipment n.e.c.	126.1	13.6	12.5	0.542
Manufacture of motor vehicles, trailers and semi-trailers	141.0	15.0	14.3	2.009
Manufacture of other transport material	93.6	31.4	-17.3	0.603
Manufacture of furniture	77.7	-2.6	4.9	-0.029
Other manufacturing industries	98.6	1.2	1.9	0.010
Repair and installation of machinery and equipment	97.8	5.1	15.3	0.069

(..) Data not available due to statistical secrecy.

5. New Orders Received indices: General and by markets Originals series

	Index	Rate (%)	
		Annual	Year-to-date average
GENERAL INDEX	108.2	3.5	1.4
1. Domestic market	94.1	-0.4	-1.8
2. Foreign market	130.3	7.5	6.1
2.1. Foreign market, euro zone	123.5	8.6	8.1
2.2. Foreign market, non euro zone	142.6	4.9	2.8

6. New Orders Received indices: National and by Autonomous Community

Originals series

	Index	Rate (%)	
		Annual	Year-to-date average
NATIONAL	108.2	3.5	1.4
Andalucía	119.8	7.2	-3.3
Aragón	117.5	12.7	13.1
Asturias, Principado de	106.3	12.5	7.7
Balears, Illes	72.6	-5.1	-0.4
Canarias	51.8	-32.6	-29.7
Cantabria	106.9	7.2	2.7
Castilla y León	113.7	12.5	7.7
Castilla - La Mancha	104.4	2.3	0.0
Cataluña	106.3	-0.3	0.2
Comunitat Valenciana	117.9	1.2	4.4
Extremadura	98.3	5.7	6.9
Galicia	104.7	5.6	-10.9
Madrid, Comunidad de	88.9	3.7	5.6
Murcia, Región de	137.2	-4.2	-2.0
Navarra, Comunidad Foral de	101.4	1.4	2.4
País Vasco	105.3	3.8	4.4
Rioja, La	104.1	3.9	7.1

For further information see **INEbase** - www.ine.es/en/ All press releases at: www.ine.es/en/prensa/prensa_en.htm

Press Office: Telephone numbers: 91 583 93 63 / 94 08 – Fax: 91 583 90 87 - gprensa@ine.es

Information Area: Telephone number: 91 583 91 00 – Fax: 91 583 91 58 – www.ine.es/infoine