

14 August 2015

Industrial New Orders Received Indices (INORI). Base 2010
June 2015. *Provisional data*

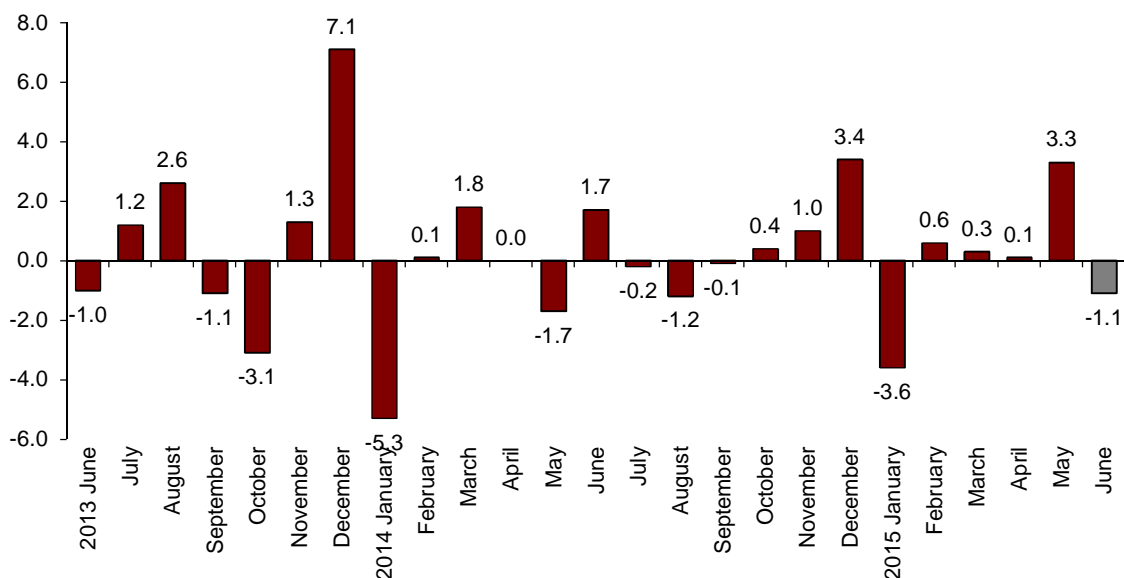
The monthly variation of the General Industrial New Orders Received Index stands at -1.1% after adjusting for the seasonal and calendar effects

The annual rate stands at 2.9% in the series adjusted for the seasonal and calendar effects and at 6.0% in the original series

Monthly evolution of New Orders Received

The monthly variation of the Industrial New Orders Received Index (INORI) between June and May stood at -1.1% , after adjusting for the seasonal and calendar effects. This rate was 4.4 points lower than that registered the previous month.

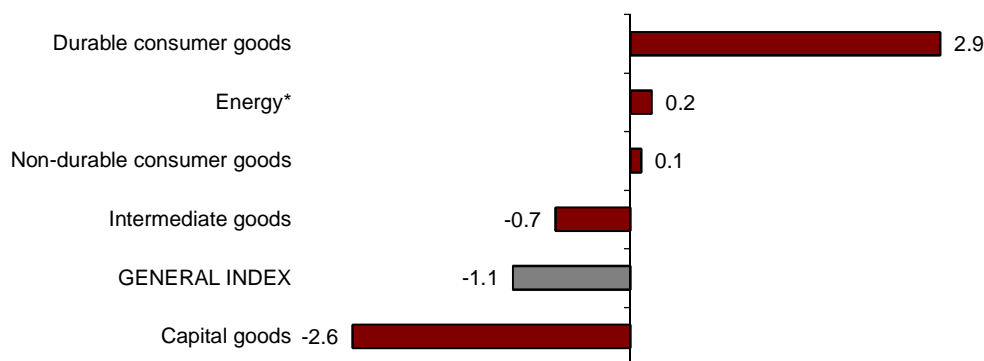
New Orders Received General Index
Adjusted for seasonal and calendar effects. Monthly rate



By economic destination of the goods, Durable consumer goods (2.9%), Energy (0.2%) and Non-durable consumer goods (0.1%) registered positive monthly rates.

In turn Capital goods (−2.6%) and Intermediate goods (−0.7%) registered negative monthly rates.

**New Orders Received indices: General and by economic destination
Adjusted for seasonal and calendar effects. Monthly rate**



*Energy does not include electric power supply, nor water, steam, gas or air-conditioning supply.

A more detailed analysis showed the branches of activity with the highest and the lowest monthly rates in June.

**Branches of activity with the highest monthly rates of the Industry New Orders Received Index,
Adjusted for seasonal and calendar effects**

Branch of activity (Section of the CNAE 2009)	Monthly rate (%)
Manufacture of other transport equipment	22.5
Mining of coal and lignite	8.1
Other manufacturing industries	7.3

**Branches of activity with the lowest monthly rates of the Industry New Orders Received Index,
Adjusted for seasonal and calendar effects**

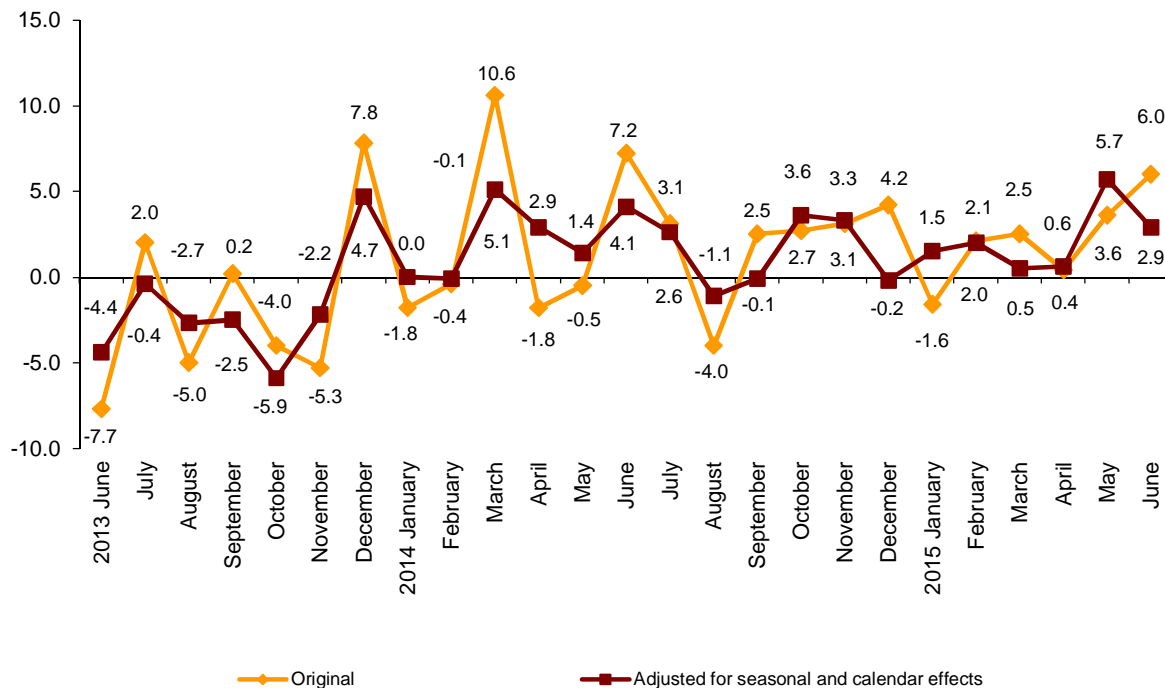
Branch of activity (Section of the CNAE 2009)	Monthly rate (%)
Manufacture of fabricated metal products, except machinery and equipment	-17.1
Repair and installation of machinery and equipment	-8.1
Manufacture of leather and related products	-7.2

Annual evolution of the New Orders Received

The Industrial New Orders Received Index (INORI), after adjusting for seasonal and calendar effects, registered a variation of 2.9% in June, as compared with the same month of the previous year. This rate was 2.8 points lower than that registered in May 2015.

The original series of the INORI registered an annual variation of 6.0%, that is, 2.4 points higher than that registered in May 2015.

Industry New Orders Received General Index Annual rates



By economic destination of the goods, four out of five sectors recorded positive rates, after adjusting for seasonal and calendar effects. Capital goods (14.6%) registered the greatest increase.

Annual rates of indices of the New Orders Received: General and by economic destination of the goods

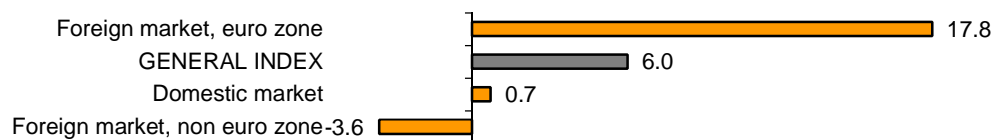
	Original index	Index adjusted for seasonal and calendar effects
	Annual rate (%)	Annual rate (%)
GENERAL INDEX	6.0	2.9
1. Consumer goods	5.6	1.8
1.1. Durable consumer goods	9.8	5.8
1.2. Non-durable consumer goods	5.3	1.7
2. Capital goods	17.7	14.6
3. Intermediate goods	7.9	4.6
4. Energy*	-21.4	-22.3

* Except supply of electrical energy, gas, steam, air conditioning and water.

Annual evolution of New Orders Received by destination market. Original series

By geographical destination, in June, two out of three markets registered positive annual rates. Worth noting was the increase of 17.8% in the euro zone of the foreign market.

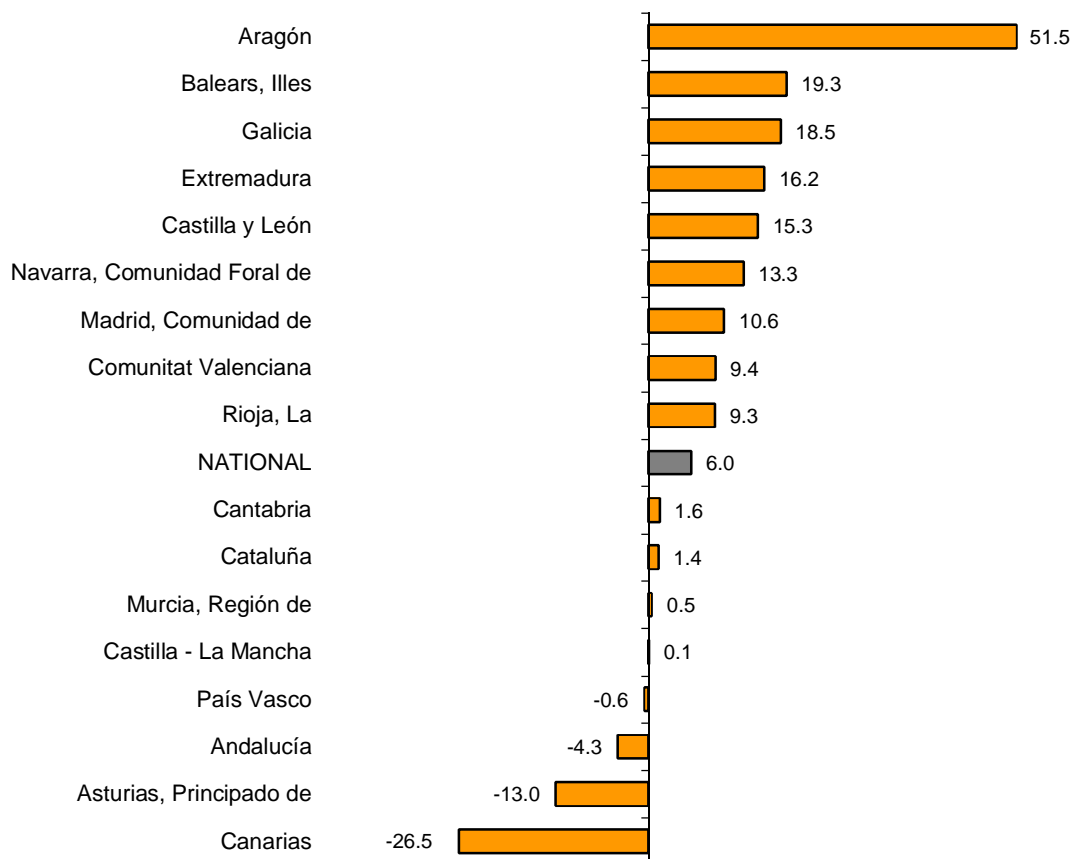
**Industrial new orders received indices: General and by market
Annual rate**



Results by Autonomous Community. Annual variation rate of the Industrial New Orders Received. Original series

New orders received increased in the annual rate in 13 Autonomous Communities and decreased in the remaining four. The greatest increase was recorded in Aragón (51.5%) and the greatest decrease was registered in Canarias (-26.5%).

**General indices: National and by Autonomous Community
Annual rate and average rate of Industry New Orders Received**



Industrial New Orders Received Index. Base 2010

June 2015

Provisional data

1. New Orders Received indices¹ Adjusted for seasonal and calendar effects

	Index	Rate (%)		
		Monthly	Annual	Year-to-date average
GENERAL INDEX	106.2	-1.1	2.9	2.2
1. Consumer goods	100.3	0.3	1.8	1.6
1.1. Durable consumer goods	71.4	2.9	5.8	4.4
1.2. Non-durable consumer goods	103.5	0.1	1.7	1.5
2. Capital goods	123.7	-2.6	14.6	12.8
3. Intermediate goods	98.0	-0.7	4.6	3.3
4. Energy*	120.4	0.2	-22.3	-22.2

¹ Regulation (EC) no. 656/2007 of the Commission of 14 June 2007.

* Except supply of electrical energy, gas, steam, air conditioning and water.

2. New Orders Received indices¹ Adjusted for calendar effects

	Index	Rate (%)	
		Annual	Year-to-date average
GENERAL INDEX	112.1	3.1	2.2
1. Consumer goods	103.9	2.3	1.8
1.1. Durable consumer goods	75.9	6.3	4.7
1.2. Non-durable consumer goods	106.7	1.9	1.6
2. Capital goods	128.7	14.8	12.4
3. Intermediate goods	105.6	4.7	3.5
4. Energy*	127.0	-21.9	-22.4

¹ Regulation (EC) no. 656/2007 of the Commission of 14 June 2007.

* Except supply of electrical energy, gas, steam, air conditioning and water.

3. New Orders Received indices: General and by activities Originals series

	Index	Rate (%)		Effect Annual
		Annual	Year-to-date average	
GENERAL INDEX	113.3	6.0	2.2	
1. CONSUMER GOODS	105.0	5.6	1.8	1.615
1.1. Durable consumer goods	76.8	9.8	4.8	0.184
- Manufacture of consumer electronics, optical instruments and photographic equipment	14.4	70.1	29.0	0.018
- Manufacture of household appliances	87.2	6.4	2.8	0.036
- Manufacture of motorcycles, bicycles, vehicles for the disabled and others	23.7	-4.0	-12.5	-0.002
- Manufacture of furniture	88.8	8.9	5.6	0.100
- Manufacture of jewellery, costume jewellery and musical instruments	105.8	25.1	8.3	0.032
1.2. Non-durable consumer goods	107.8	5.3	1.6	1.431
- Food industries (except grain mill products and food for animals)	114.8	5.4	1.9	0.829
- Manufacture of beverages	115.3	1.0	-3.4	0.037
- Manufacture of tobacco	82.3	-18.1	-18.1	-0.038
- Manufacture of knitted fabrics, carpets, rope, non-woven fabrics, textile products for technical use and industrial and other textile products	113.2	11.9	3.5	0.075
- Manufacture of garments	88.8	15.3	3.5	0.143
- Leather and footwear industry	88.7	-1.1	2.5	-0.008
- Graphic arts and reproduction of recorded media	68.3	4.7	0.5	0.047
- Manufacture of cleaning articles, perfumes and cosmetics	99.2	6.6	3.8	0.082
- Manufacture of pharmaceutical products	102.5	6.5	4.7	0.196
- Manufacture of sporting goods; games and toys and Other manufacturing industries	130.2	16.9	4.4	0.067
2. CAPITAL GOODS	129.9	17.7	12.3	4.296
- Manufacture of metal products for construction, containers made of metal, steam generators, weapons and ammunition	81.7	0.1	27.8	0.003
- Manufacture of computers, peripherals and telecommunications equipment; appliances for measuring and navigation; radiation and medical and therapeutic equipment	89.7	-10.0	2.4	-0.077
- Manufacture of machinery and equipment n.e.c.	128.0	25.8	14.4	0.920
- Manufacture of motor vehicles, trailers and semi-trailers	127.4	20.6	15.2	2.326
- Naval, railway, aircraft and spacecraft construction. Combat vehicles	227.5	25.8	-7.4	1.153
- Manufacture of medical and dental instruments and supplies	109.8	15.3	3.9	0.047
- Repair and installation of machinery and equipment	103.8	-4.8	13.8	-0.075
3. INTERMEDIATE GOODS	106.8	7.9	3.4	2.732
- Other mining and quarrying	98.7	20.0	15.6	0.127
- Manufacture of grain mill products, starches, and food for animals	121.5	3.8	-0.1	0.105
- Preparation and spinning of textile fibres. Manufacture of woven textiles. Textile finishings	101.9	9.2	0.6	0.042
- Wood and cork industry	97.6	9.3	5.2	0.114
- Paper industry	104.9	5.8	1.1	0.149
- Chemical industry except cleaning articles, perfumes and cosmetics	111.1	4.1	-1.2	0.263
- Rubber and plastic material transformation industry	105.6	8.7	2.8	0.319
- Manufacture of other non-metallic ore products	87.5	9.7	6.6	0.335
- Metallurgy; manufacture of iron, steel and ferro-alloy products	107.4	11.8	8.9	0.701
- Forging, stamping, embossing and rolling of metals. - Manufacture of tools, hardware goods, containers and other metal products	120.3	11.4	3.3	0.495
- Manufacture of electronic components, assembled printed circuits, and magnetic and optical media	79.6	102.6	44.9	0.122
- Manufacture of electrical material and equipment except household appliances	108.5	-1.3	0.9	-0.040
4. ENERGY*	127.3	-21.4	-22.4	-2.598
- Extraction of anthracite, coal and lignite	75.4	-34.2	-9.3	..
- Extraction of crude oil, petroleum and natural gas
- Manufacture of coke and refined petroleum products	128.0	-21.1	-22.4	-2.517

* Except supply of electrical energy, gas, steam, air conditioning and water.

(..) Data not available due to statistical secrecy.

4. New Orders Received indices: General and by branch of activity Originals series

	Index	Rate (%)		Effect
		Annual	Year-to-date average	Annual
GENERAL INDEX	113.3	6.0	2.2	
B. Mining and quarrying industries	97.1	5.4	7.2	0.045
Extraction of anthracite, coal and lignite	75.4	-34.2	-9.3	..
Extraction of crude oil, petroleum and natural gas
Other mining and quarrying	98.7	20.0	15.6	0.127
C. Manufacturing industry	113.5	6.1	2.2	5.998
Food industry	115.7	5.2	1.6	0.934
Manufacture of beverages	115.3	1.0	-3.4	0.037
Manufacture of tobacco	82.3	-18.1	-18.1	-0.038
Textile industry	108.2	2.3	10.8	0.116
Manufacture of garments	88.8	15.3	3.5	0.143
Leather and footwear industry	88.7	-1.1	2.5	-0.008
Manufacture of wood and of products of wood and cork, except furniture; basketmaking and wickerwork	97.6	9.3	5.2	0.114
Paper industry	104.9	5.8	1.1	0.149
Graphic arts and reproduction of recorded media	68.3	4.7	0.5	0.047
Manufacture of coke and refined petroleum products	128.0	-21.1	-22.4	-2.517
Chemical industry	109.0	4.5	-0.4	0.345
Manufacture of pharmaceutical products	102.5	6.5	4.7	0.196
Rubber and plastic material transformation industry	105.6	8.7	2.8	0.319
Manufacture of other non-metallic ore products	87.5	9.7	6.6	0.335
Metallurgy; manufacture of iron, steel and ferro-alloy products	107.4	11.8	8.9	0.701
Manufacture of metal products, except machinery and equipment	104.5	7.5	10.7	0.498
Manufacture of computer, electronic and optical products	70.9	6.9	9.8	0.063
Manufacture of electrical material and equipment	104.3	-0.1	1.3	-0.004
Manufacture of machinery and equipment n.e.c.	128.0	25.8	14.4	0.920
Manufacture of motor vehicles, trailers and semi-trailers	127.4	20.6	15.2	2.326
Manufacture of other transport material	214.3	25.6	-7.5	1.151
Manufacture of furniture	88.8	8.9	5.6	0.100
Other manufacturing industries	117.9	17.5	4.8	0.146
Repair and installation of machinery and equipment	103.8	-4.8	13.8	-0.075

(..) Data not available due to statistical secrecy.

5. New Orders Received indices: General and by markets Originals series

	Index	Rate (%)	
		Annual	Year-to-date average
GENERAL INDEX	113.3	6.0	2.2
1. Domestic market	97.4	0.7	-1.3
2. Foreign market	131.9	9.0	6.5
2.1. Foreign market, euro zone	125.1	17.8	9.7
2.2. Foreign market, non euro zone	143.7	-3.6	1.4

6. New Orders Received indices: National and by Autonomous Community

Originals series

	Index	Rate (%)	
		Annual	Year-to-date average
NATIONAL	113.3	6.0	2.2
Andalucía	108.8	-4.3	-3.5
Aragón	135.5	51.5	18.8
Asturias, Principado de	88.9	-13.0	3.9
Balears, Illes	83.3	19.3	2.7
Canarias	55.3	-26.5	-29.1
Cantabria	100.9	1.6	2.6
Castilla y León	118.4	15.3	8.9
Castilla - La Mancha	108.6	0.1	0.0
Cataluña	111.4	1.4	0.5
Comunitat Valenciana	116.0	9.4	5.5
Extremadura	117.6	16.2	9.0
Galicia	121.6	18.5	-6.3
Madrid, Comunidad de	111.8	10.6	6.5
Murcia, Región de	144.4	0.5	-1.7
Navarra, Comunidad Foral de	108.1	13.3	4.1
País Vasco	111.5	-0.6	3.4
Rioja, La	110.4	9.3	7.6

For further information see **INEbase** - www.ine.es/en/ All press releases at: www.ine.es/en/prensa/prensa_en.htm

Press Office: Telephone numbers: 91 583 93 63 / 94 08 – Fax: 91 583 90 87 - gprensa@ine.es

Information Area: Telephone number: 91 583 91 00 – Fax: 91 583 91 58 – www.ine.es/infoine