

18 September 2015

Industrial New Orders Received Indices (INORI). Base 2010
July 2015. *Provisional data*

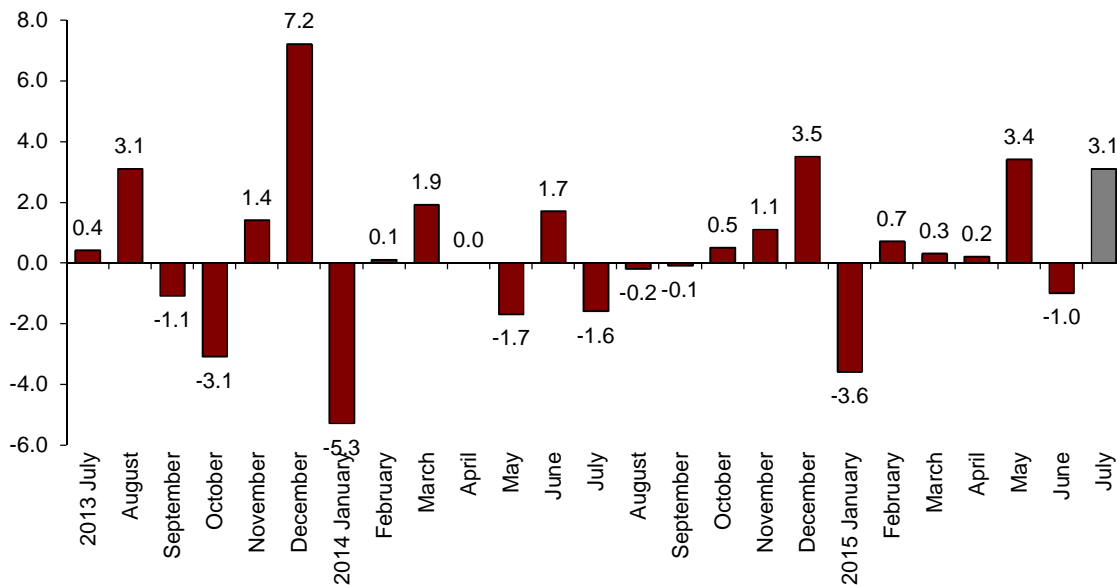
The monthly variation of the General Industrial New Orders Received Index stands at 3.1% after adjusting for the seasonal and calendar effects

The annual rate stands at 8.0% in the series adjusted for the seasonal and calendar effects and at 8.9% in the original series

Monthly evolution of New Orders Received

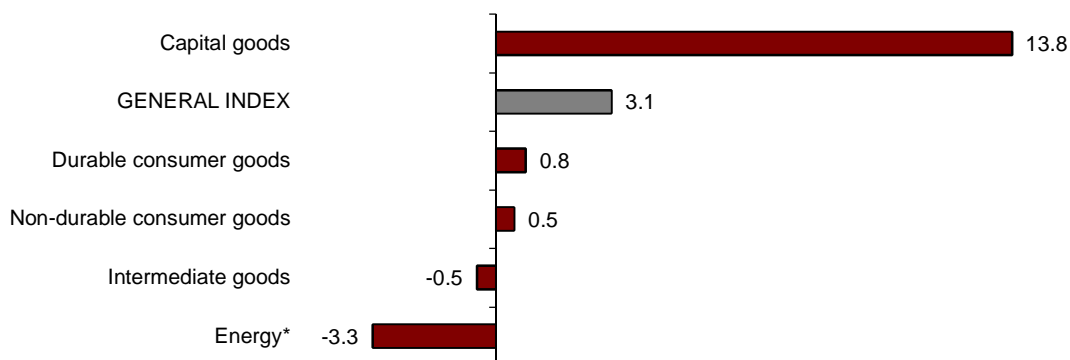
The monthly variation of the Industrial New Orders Received Index (INORI) between July and June stood at 3.1%, after adjusting for the seasonal and calendar effects. This rate was 4.1 points higher than that registered the previous month.

New Orders Received General Index
Adjusted for seasonal and calendar effects. Monthly rate



By economic destination of the goods, Capital goods (13.8%), Durable consumer goods (0.8%) and Non-durable consumer goods (0.5%) registered positive monthly rates. In turn, Energy (−3.3%) and Intermediate goods (−0.5%) registered negative monthly rates.

New Orders Received indices: General and by economic destination Adjusted for seasonal and calendar effects. Monthly rate



*Energy does not include electric power supply, nor water, steam, gas or air-conditioning supply.

A more detailed analysis showed the branches of activity with the highest and the lowest monthly rates in July.

Branches of activity with the highest monthly rates of the Industry New Orders Received Index, Adjusted for seasonal and calendar effects

Branch of activity (Section of the CNAE 2009)	Monthly rate (%)
Manufacture of other transport equipment	74.8
Manufacture of computer, electronic and optical products	20.7
Other mining and quarrying	7.9

Branches of activity with the lowest monthly rates of the Industry New Orders Received Index, Adjusted for seasonal and calendar effects

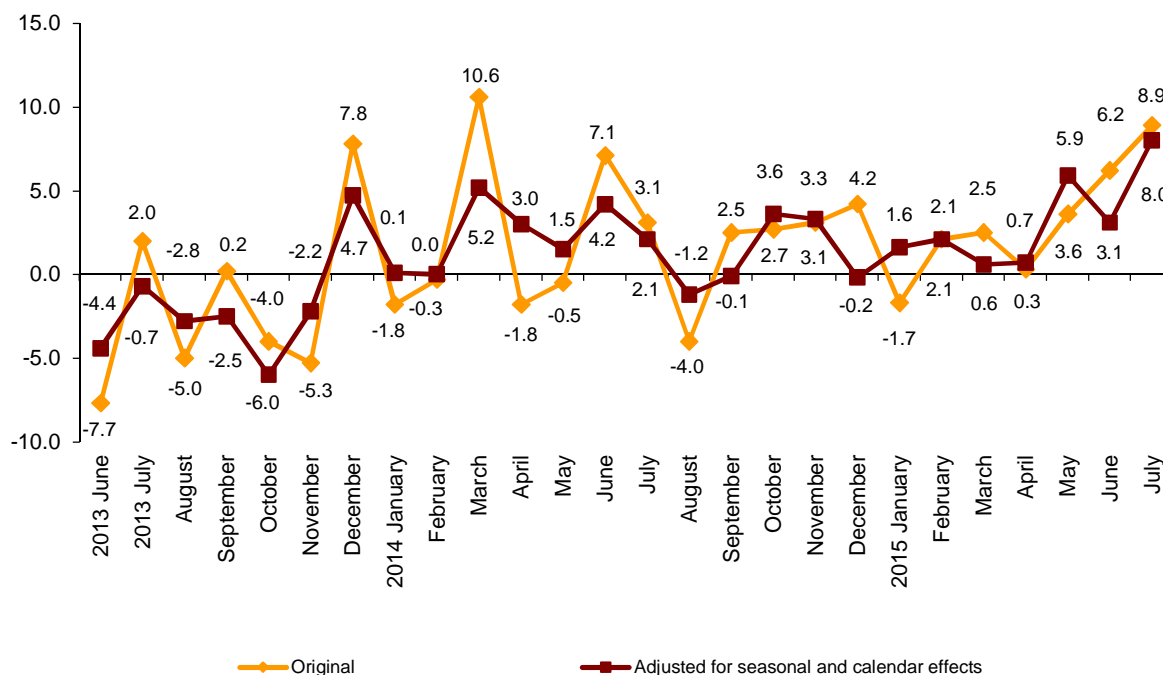
Branch of activity (Section of the CNAE 2009)	Monthly rate (%)
Mining of coal and lignite	-43.8
Manufacture of machinery and equipment n.e.c	-10.2
Manufacture of basic metals	-6.0

Annual evolution of the New Orders Received

The Industrial New Orders Received Index (INORI), after adjusting for seasonal and calendar effects, registered a variation of 8.0% in July, as compared with the same month of the previous year. This rate was almost 5 points higher than that registered in June 2015.

The original series of the INORI registered an annual variation of 8.9%, that is, 2.7 points higher than that registered in June 2015.

Industry New Orders Received General Index Annual rates



By economic destination of the goods, four out of five sectors recorded positive rates, after adjusting for seasonal and calendar effects. Capital goods (37.5%) registered the greatest increase.

Annual rates of indices of the New Orders Received: General and by economic destination of the goods

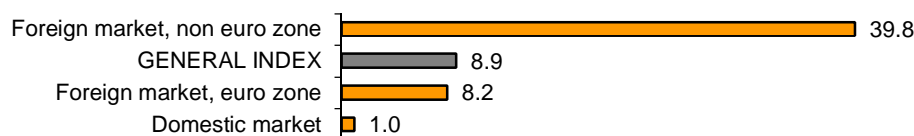
	Original index	Index adjusted for seasonal and calendar effects
	Annual rate (%)	Annual rate (%)
GENERAL INDEX	8.9	8.0
1. Consumer goods	3.0	2.4
1.1. Durable consumer goods	9.1	8.6
1.2. Non-durable consumer goods	2.6	2.1
2. Capital goods	38.7	37.5
3. Intermediate goods	2.7	2.5
4. Energy*	-18.2	-18.4

* Except supply of electrical energy, gas, steam, air conditioning and water.

Annual evolution of New Orders Received by destination market. Original series

By geographical destination, in July, all markets registered positive annual rates. Worth noting was the increase of 39.8% in the non-euro zone of the foreign market.

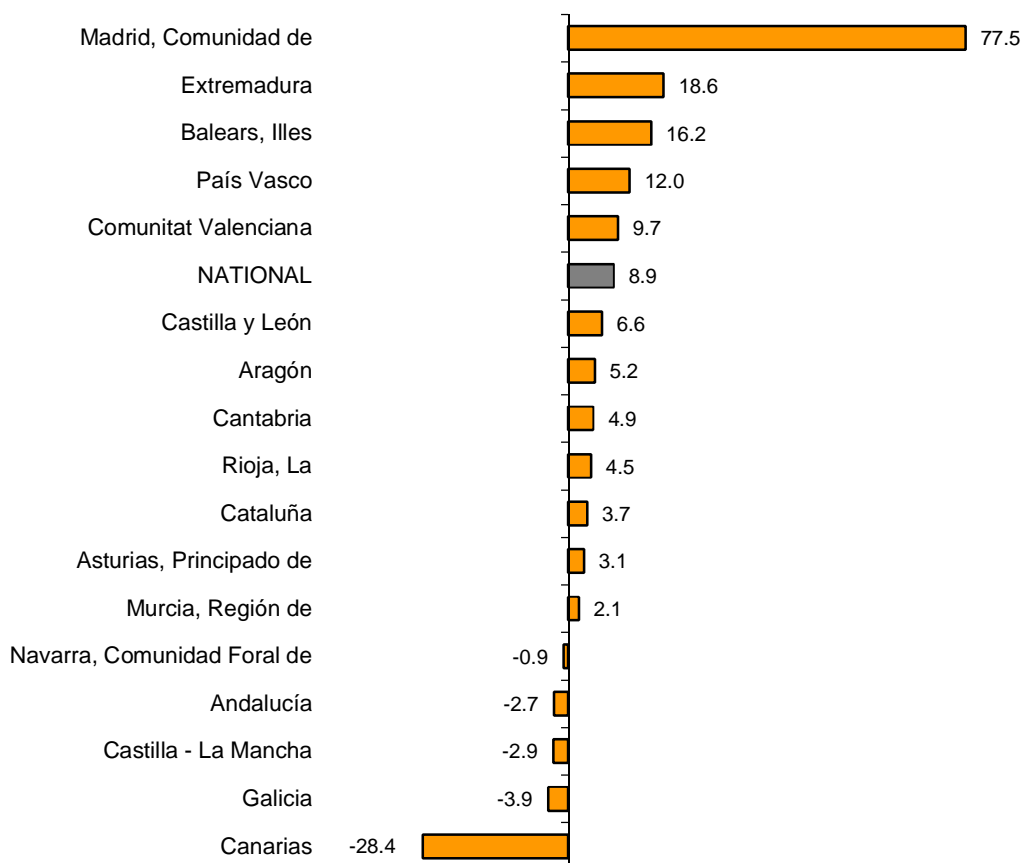
**Industrial new orders received indices: General and by market
Annual rate**



Results by Autonomous Community. Annual variation rate of the Industrial New Orders Received. Original series

New orders received increased in the annual rate in 12 Autonomous Communities and decreased in the remaining five as compared to July 2014. The greatest increase was recorded in Comunidad de Madrid (77.5%) and the greatest decrease was registered in Canarias (-28.4%).

**General indices: National and by Autonomous Community
Annual rate and average rate of Industry New Orders Received**



Industrial New Orders Received Index. Base 2010

July 2015

Provisional data

1. New Orders Received indices¹ Adjusted for seasonal and calendar effects

	Index	Rate (%)		
		Monthly	Annual	Year-to-date average
GENERAL INDEX	110.1	3.1	8.0	3.1
1. Consumer goods	101.0	0.4	2.4	1.7
1.1. Durable consumer goods	71.8	0.8	8.6	4.7
1.2. Non-durable consumer goods	104.2	0.5	2.1	1.6
2. Capital goods	142.2	13.8	37.5	16.4
3. Intermediate goods	97.3	-0.5	2.5	3.2
4. Energy*	115.5	-3.3	-18.4	-21.7

¹ Regulation (EC) no. 656/2007 of the Commission of 14 June 2007.

* Except supply of electrical energy, gas, steam, air conditioning and water.

2. New Orders Received indices¹ Adjusted for calendar effects

	Index	Rate (%)	
		Annual	Year-to-date average
GENERAL INDEX	116.4	8.6	3.1
1. Consumer goods	108.5	2.8	1.9
1.1. Durable consumer goods	78.8	8.9	4.9
1.2. Non-durable consumer goods	111.4	2.3	1.7
2. Capital goods	147.4	38.3	16.1
3. Intermediate goods	102.6	2.5	3.3
4. Energy*	122.4	-18.2	-21.8

¹ Regulation (EC) no. 656/2007 of the Commission of 14 June 2007.

* Except supply of electrical energy, gas, steam, air conditioning and water.

3. New Orders Received indices: General and by activities Originals series

	Index	Rate (%)		Effect Annual
		Annual	Year-to-date average	
GENERAL INDEX	119.3	8.9	3.2	
1. CONSUMER GOODS	111.4	3.0	2.0	0.918
1.1. Durable consumer goods	81.0	9.1	5.0	0.177
- Manufacture of consumer electronics, optical instruments and photographic equipment	15.3	109.6	39.1	0.024
- Manufacture of household appliances	90.2	2.9	2.8	0.017
- Manufacture of motorcycles, bicycles, vehicles for the disabled and others	26.0	2.1	-28.7	0.001
- Manufacture of furniture	96.2	9.9	6.3	0.117
- Manufacture of jewellery, costume jewellery and musical instruments	94.9	15.9	9.6	0.019
1.2. Non-durable consumer goods	114.5	2.6	1.8	0.741
- Food industries (except grain mill products and food for animals)	120.4	2.7	2.0	0.425
- Manufacture of beverages	129.6	2.6	-2.4	0.102
- Manufacture of tobacco	76.7	-8.8	-16.8	-0.015
- Manufacture of knitted fabrics, carpets, rope, non-woven fabrics, textile products for technical use and industrial and other textile products	112.1	1.8	3.3	0.012
- Manufacture of garments	98.0	-2.7	2.9	-0.032
- Leather and footwear industry	104.3	-2.2	1.8	-0.018
- Graphic arts and reproduction of recorded media	65.0	0.2	0.5	0.002
- Manufacture of cleaning articles, perfumes and cosmetics	101.7	-0.8	3.1	-0.010
- Manufacture of pharmaceutical products	112.8	8.7	5.3	0.273
- Manufacture of sporting goods; games and toys and Other manufacturing industries	124.5	0.8	3.7	0.003
2. CAPITAL GOODS	150.9	38.7	16.2	9.011
- Manufacture of metal products for construction, containers made of metal, steam generators, weapons and ammunition	90.3	-2.9	22.0	-0.072
- Manufacture of computers, peripherals and telecommunications equipment; appliances for measuring and navigation; radiation and medical and therapeutic equipment	114.3	8.5	3.1	0.068
- Manufacture of machinery and equipment n.e.c.	118.1	4.5	13.2	0.174
- Manufacture of motor vehicles, trailers and semi-trailers	143.0	23.5	16.4	2.836
- Naval, railway, aircraft and spacecraft construction. Combat vehicles	349.0	214.6	19.9	5.728
- Manufacture of medical and dental instruments and supplies	111.5	6.4	4.3	0.021
- Repair and installation of machinery and equipment	95.4	23.9	14.6	0.256
3. INTERMEDIATE GOODS	105.3	2.7	3.3	0.955
- Other mining and quarrying	99.5	15.0	15.5	0.098
- Manufacture of grain mill products, starches, and food for animals	123.6	-2.5	-0.5	-0.074
- Preparation and spinning of textile fibres. Manufacture of woven textiles. Textile finishings	103.3	4.7	1.2	0.022
- Wood and cork industry	101.7	8.3	5.6	0.104
- Paper industry	107.7	0.5	1.0	0.013
- Chemical industry except cleaning articles, perfumes and cosmetics	114.3	3.3	-0.6	0.212
- Rubber and plastic material transformation industry	105.2	3.1	2.8	0.118
- Manufacture of other non-metallic ore products	85.2	6.1	6.6	0.206
- Metallurgy; manufacture of iron, steel and ferro-alloy products	100.4	-2.5	7.2	-0.156
- Forging, stamping, embossing and rolling of metals. - Manufacture of tools, hardware goods, containers and other metal products	118.5	9.0	4.1	0.384
- Manufacture of electronic components, assembled printed circuits, and magnetic and optical media	50.0	20.6	41.4	0.025
- Manufacture of electrical material and equipment except household appliances	101.8	0.1	0.8	0.002
4. ENERGY*	123.0	-18.2	-21.7	-1.999
- Extraction of anthracite, coal and lignite	71.8	-37.5	-14.8	..
- Extraction of crude oil, petroleum and natural gas
- Manufacture of coke and refined petroleum products	123.8	-17.8	-21.7	-1.914

* Except supply of electrical energy, gas, steam, air conditioning and water.

(..) Data not available due to statistical secrecy.

4. New Orders Received indices: General and by branch of activity Originals series

	Index	Rate (%)		Effect Annual
		Annual	Year-to-date average	
GENERAL INDEX	119.3	8.9	3.2	
B. Mining and quarrying industries	96.7	1.5	6.3	0.013
Extraction of anthracite, coal and lignite	71.8	-37.5	-14.8	..
Extraction of crude oil, petroleum and natural gas
Other mining and quarrying	99.5	15.0	15.5	0.098
C. Manufacturing industry	119.6	8.9	3.2	8.872
Food industry	120.8	1.9	1.6	0.351
Manufacture of beverages	129.6	2.6	-2.4	0.102
Manufacture of tobacco	76.7	-8.8	-16.8	-0.015
Textile industry	108.2	2.4	3.0	0.034
Manufacture of garments	98.0	-2.7	2.9	-0.032
Leather and footwear industry	104.3	-2.2	1.8	-0.018
Manufacture of wood and of products of wood and cork, except furniture; basketmaking and wickerwork	101.7	8.3	5.6	0.104
Paper industry	107.7	0.5	1.0	0.013
Graphic arts and reproduction of recorded media	65.0	0.2	0.5	0.002
Manufacture of coke and refined petroleum products	123.8	-17.8	-21.7	-1.914
Chemical industry	112.0	2.6	0.0	0.202
Manufacture of pharmaceutical products	112.8	8.7	5.3	0.273
Rubber and plastic material transformation industry	105.2	3.1	2.8	0.118
Manufacture of other non-metallic ore products	85.2	6.1	6.6	0.206
Metallurgy; manufacture of iron, steel and ferro-alloy products	100.4	-2.5	7.2	-0.156
Manufacture of metal products, except machinery and equipment	107.0	4.6	9.7	0.312
Manufacture of computer, electronic and optical products	78.4	12.4	10.0	0.116
Manufacture of electrical material and equipment	99.5	0.6	1.1	0.019
Manufacture of machinery and equipment n.e.c.	118.1	4.5	13.2	0.174
Manufacture of motor vehicles, trailers and semi-trailers	143.0	23.5	16.4	2.836
Manufacture of other transport material	328.0	211.2	19.2	5.729
Manufacture of furniture	96.2	9.9	6.3	0.117
Other manufacturing industries	114.1	4.9	4.9	0.043
Repair and installation of machinery and equipment	95.4	23.9	14.6	0.256

(..) Data not available due to statistical secrecy.

5. New Orders Received indices: General and by markets Originals series

	Index	Rate (%)	
		Annual	Year-to-date average
GENERAL INDEX	119.3	8.9	3.2
1. Domestic market	100.3	1.0	-1.0
2. Foreign market	148.2	18.5	8.3
2.1. Foreign market, euro zone	127.1	8.2	9.5
2.2. Foreign market, non euro zone	193.0	39.8	7.1

6. New Orders Received indices: National and by Autonomous Community

Originals series

	Index	Rate (%)	
		Annual	Year-to-date average
NATIONAL	119.3	8.9	3.2
Andalucía	115.1	-2.7	-3.4
Aragón	121.6	5.2	16.6
Asturias, Principado de	92.7	3.1	3.8
Balears, Illes	80.3	16.2	4.3
Canarias	57.8	-28.4	-29.3
Cantabria	98.1	4.9	2.8
Castilla y León	118.8	6.6	8.5
Castilla - La Mancha	107.1	-2.9	-0.4
Cataluña	115.1	3.7	1.0
Comunitat Valenciana	130.8	9.7	6.2
Extremadura	110.0	18.6	10.9
Galicia	102.9	-3.9	-6.0
Madrid, Comunidad de	170.4	77.5	17.2
Murcia, Región de	145.8	2.1	-1.3
Navarra, Comunidad Foral de	94.2	-0.9	3.4
País Vasco	116.2	12.0	4.6
Rioja, La	113.4	4.5	7.1

For further information see **INEbase** - www.ine.es/en/ All press releases at: www.ine.es/en/prensa/prensa_en.htm

Press Office: Telephone numbers: 91 583 93 63 / 94 08 – Fax: 91 583 90 87 - gprensa@ine.es

Information Area: Telephone number: 91 583 91 00 – Fax: 91 583 91 58 – www.ine.es/infoine