

3 June 2015

**Export and Import Price Indices of  
Industrial Products. Base 2010**  
April 2015. *Provisional data*

**The annual variation rate of the IPRIX stands at 1.5%, five tenths  
higher than in March**

**The annual variation rate of the IPRIM is –2.4%, five tenths over that  
registered the previous month**

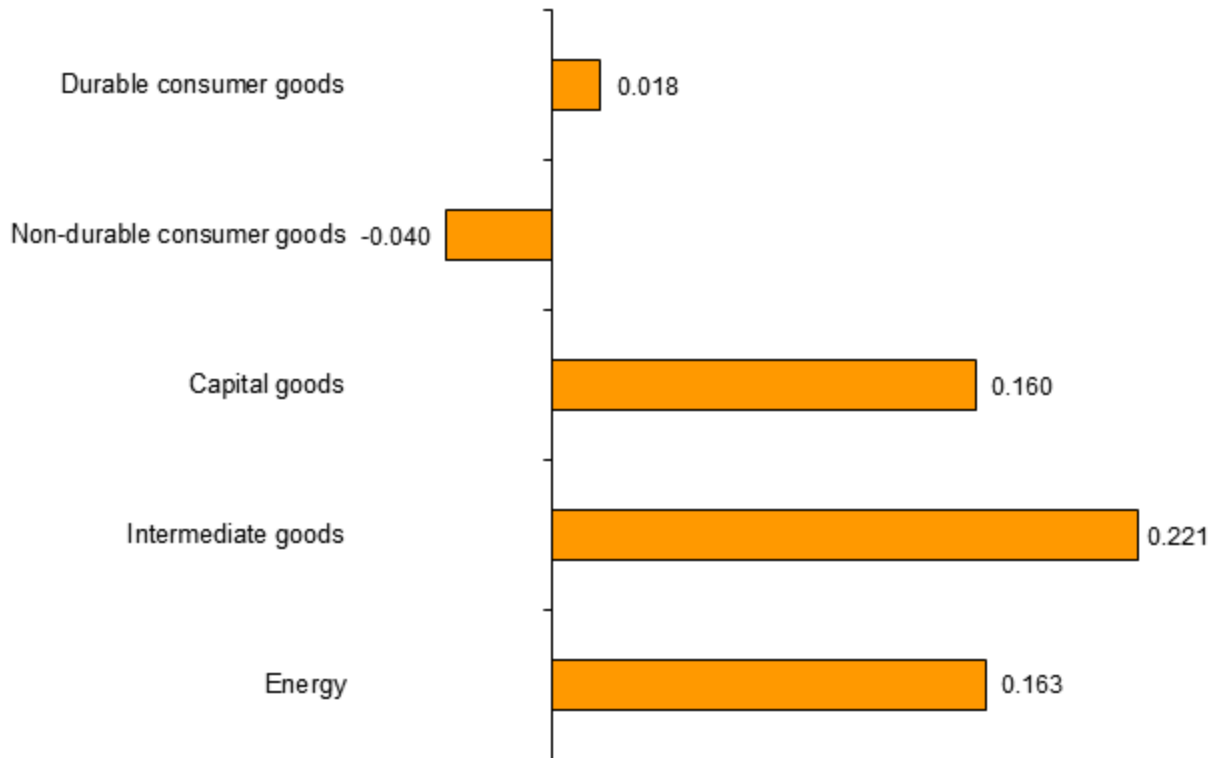
**Annual evolution of export prices**

The annual rate of the Export Price Index (IPRIX) was **1.5%** in the month of April, five tenths over that registered in March.

By economic destination of the goods, among the industrial sectors with an effect on the increase in the annual rate of the IPRIX, worth noting were:

- **Intermediate goods**, with a variation of **1.9%**, six tenths over that registered in March. This was mainly due to the increase in the prices of *Manufacture of basic chemicals, fertilisers and nitrogen compounds, plastics and synthetic rubber in primary forms* and *Manufacture of precious metals and other non-ferrous metals* as compared to the stability in April 2014. The latter activity registered its highest rate since July 2011.
- **Energy**, which presented a rate of **–4.2%**, almost than 3 points higher than that registered in March. In this behaviour, it was worth noting the increase in the prices of *Electric power generation, transmission and distribution*, which decreased in 2014, and of *Manufacture of refined petroleum products*, which remained stable in the previous year.
- **Capital goods**, which increased by four tenths its annual rate to **1.3%**, due to the increase in the prices of *Manufacture of motor vehicles*, which registered its highest rate since December 2012.

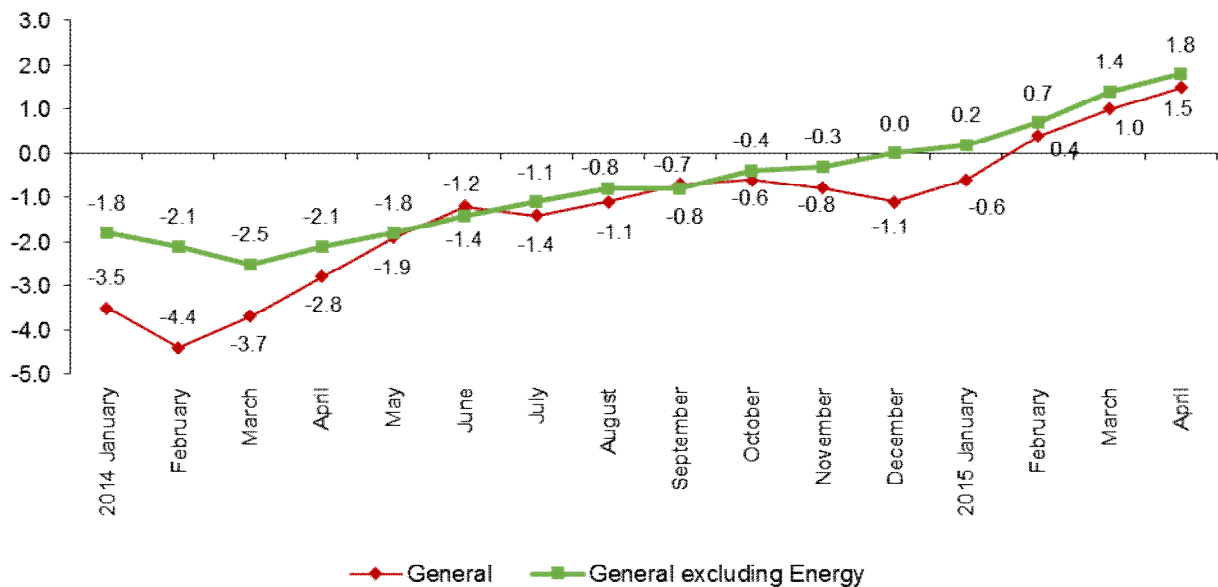
## Contribution of the industrial sectors to the annual rate of the IPRIX



## DIFFERENCE OF THE ANNUAL RATE OF THE GENERAL IPRIX 0.5

The annual variation rate of the general index excluding *Energy* increased up to 1.8%, standing three tenths over that of the general IPRIX.

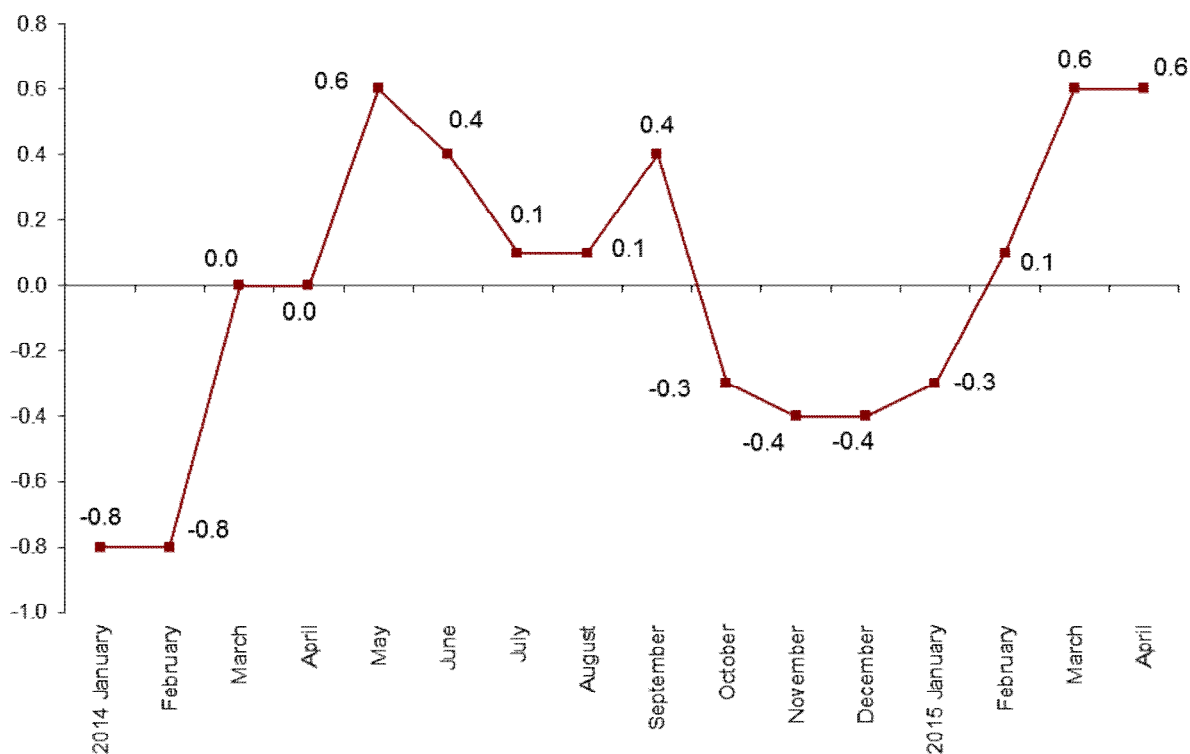
### Annual evolution of the IPRIX General index and general excluding Energy



### Monthly evolution of export prices

In April 2015, industrial export prices registered a monthly rate of **0.6%**, as compared to the month of March.

**Monthly evolution of the IPRIX  
General INDEX**



By economic destination of the goods, all the industrial sectors had a positive monthly effect on the general index. Among them, worth noting were:

- **Intermediate goods**, whose rate stood at **0.7%**, with a contribution of **0.253**, due to the increase in the prices of the *Manufacture of basic chemicals, fertilisers and nitrogen compounds, plastics and synthetic rubber in primary forms and Manufacture of precious metals and other non-ferrous metals*.
- **Energy**, whose variation stood at **2.7%**, due to the raise in the prices of the *Manufacture of refined petroleum products and Electric power generation, transmission and distribution*. Its effect on the IPRIX was **0.139**.
- **Capital goods**, whose rate stood at **0.4%** and had a contribution of **0.129** to the general IPRIX, due to the increase in the prices of *Manufacture of motor vehicles*.

A more detailed analysis showed the activities that most affected the monthly rate of the IPRIX in the month of April.

**Activities with the greatest positive effect on the monthly rate of the IPRIX**

<b>Activity (CNAE-09 groups)</b>	<b>Monthly rate (%)</b>	<b>Effect</b>
Manufacture of motor vehicles	0.7	0.129
Manufacture of basic chemicals, fertilisers and nitrogen, compounds, plastics and synthetic rubber in primary forms	2.1	0.127
Manufacture of basic precious and other non-ferrous metals	2.6	0.085
Manufacture of refined petroleum products	2.1	0.079
Electric power generation, transmission and distribution	4.1	0.060
Manufacture of other chemical products	1.4	0.016
Manufacture of electric motors, generators, transformers and electricity distribution and control apparatus	0.8	0.015
Manufacture of pulp, paper and paperboard	0.7	0.012

**Activities with the greatest negative effect on the monthly rate of the IPRIX**

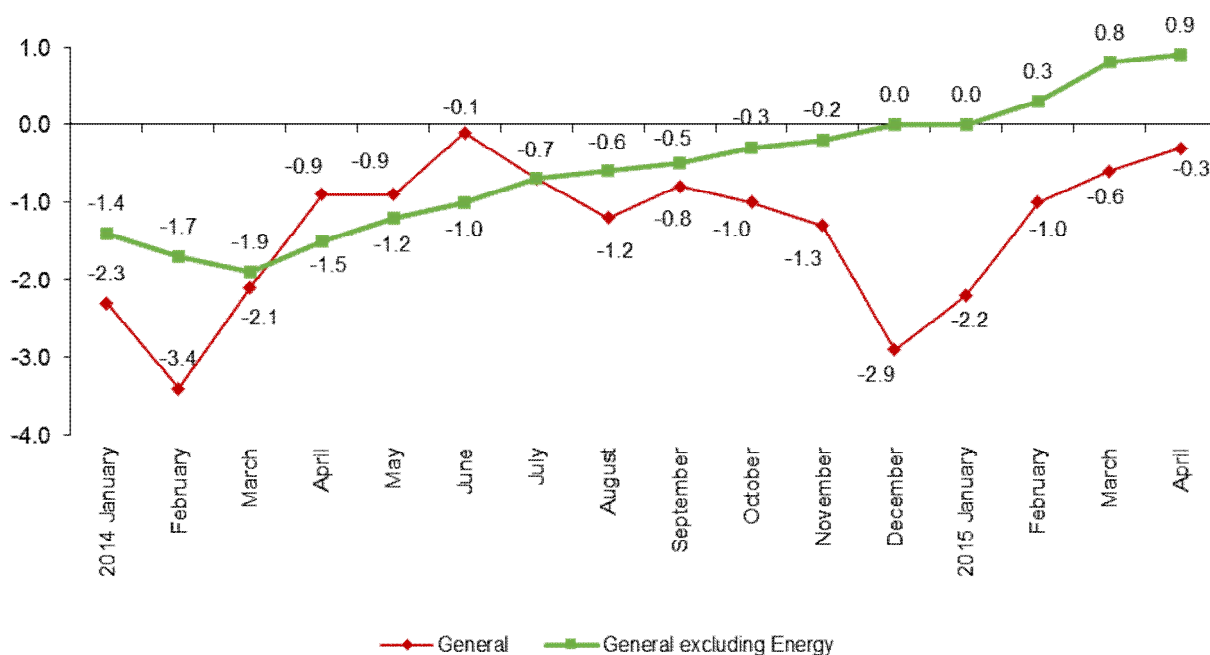
<b>Activity (CNAE-09 groups)</b>	<b>Monthly rate (%)</b>	<b>Effect</b>
Manufacture of basic iron and steel and of ferro-alloys	-0.4	-0.015
Cutting, shaping and finishing of stone	-1.9	-0.009
Manufacture of structural metal products	-0.6	-0.005

**Annual evolution of industrial prices, aggregating the domestic and foreign markets**

In April, the Industrial Price Index of the domestic and foreign markets, as the aggregation of the IPRI and the IPRIX, presented an annual rate of **-0.3%**, three tenths over that registered in March.

In turn, the annual variation rate of the **general index excluding Energy** stood at **0.9%**, that is, more than one point over that of the general IPRI+IPRIX.

**Annual evolution of the IPRI-IPRIX  
General index and general excluding Energy**



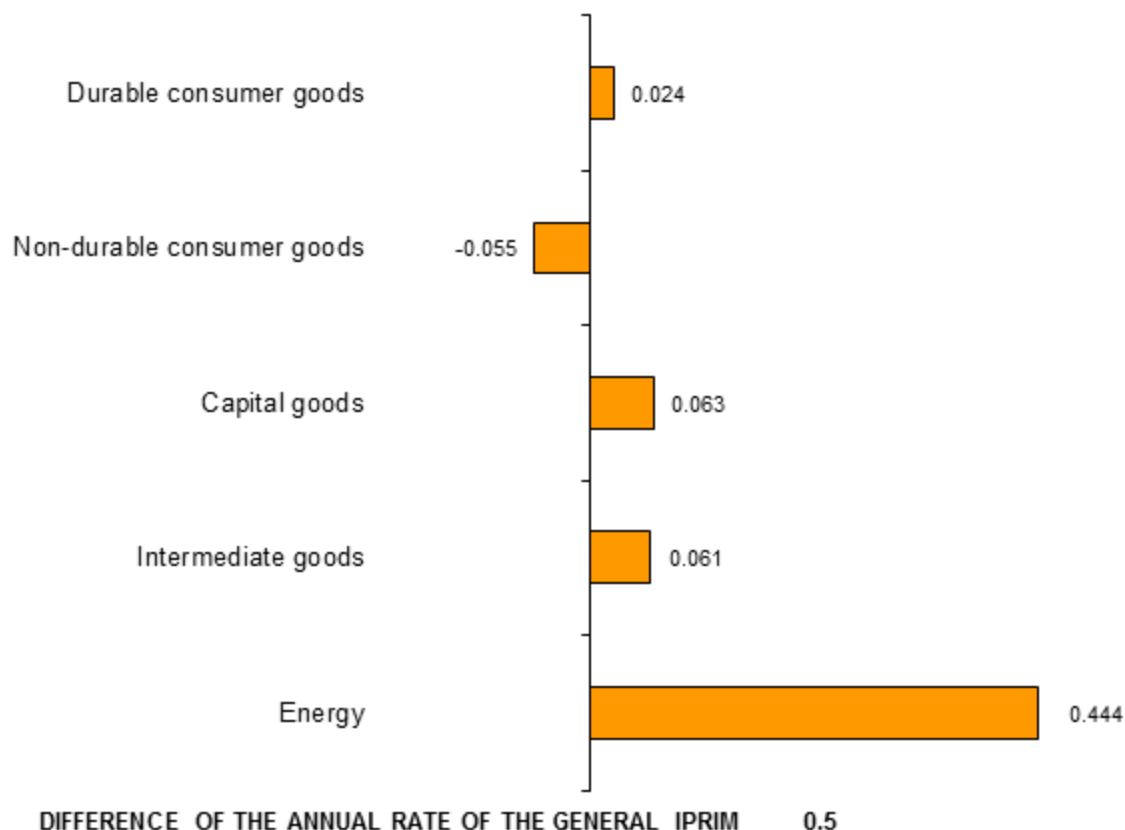
## Annual evolution of import prices

The Import Price Index (IPRIM) registered an annual rate of **-2.4%** in April, five tenths higher than that of March.

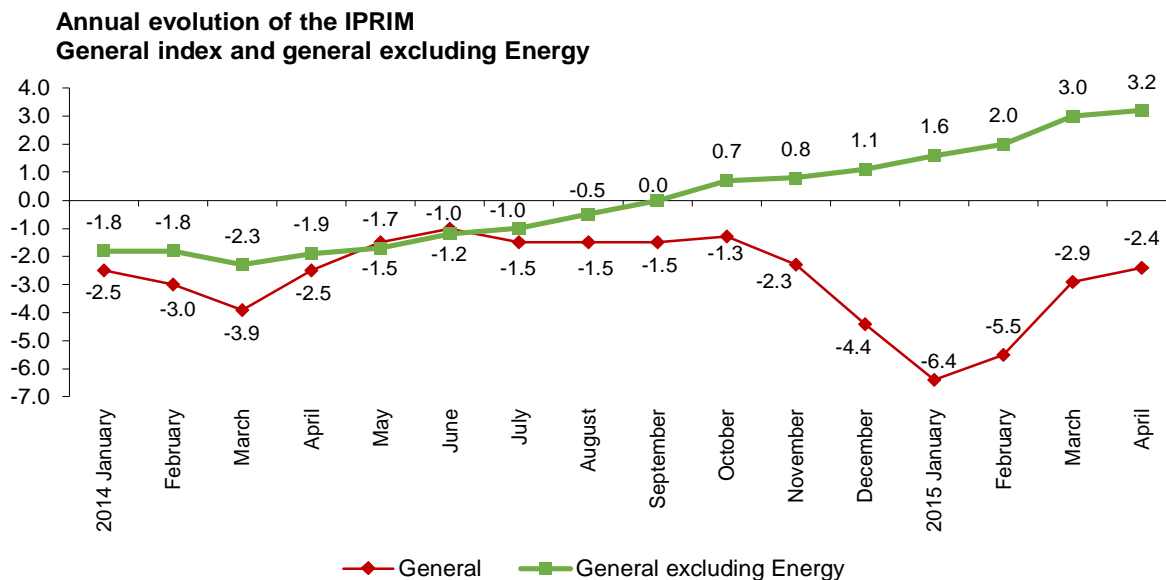
By economic destination of the goods, among the industrial sectors contributing to the increase in the annual rate of the IPRIM, worth noting:

- **Energy**, whose variation rose more than one and a half points, reaching **-20.1%**. This behaviour was mainly due to the increase in the prices of the *Manufacture of coke and refined petroleum products*, as compared to the decrease registered in 2014, and to the increase in the prices of *Extraction of crude petroleum and natural gas*.
- **Capital goods**, whose annual rate stood at 2.2%, three tenths higher than that of the previous month.
- **Intermediate goods**, with a variation of **2.8%**, three tenths higher than that of the previous month.

Contribution of the industrial sectors to the annual rate of the IPRIM



The annual variation rate of the **general index excluding Energy** increased up to **3.2%**, standing 5.6 points over that of the general IPRIM.



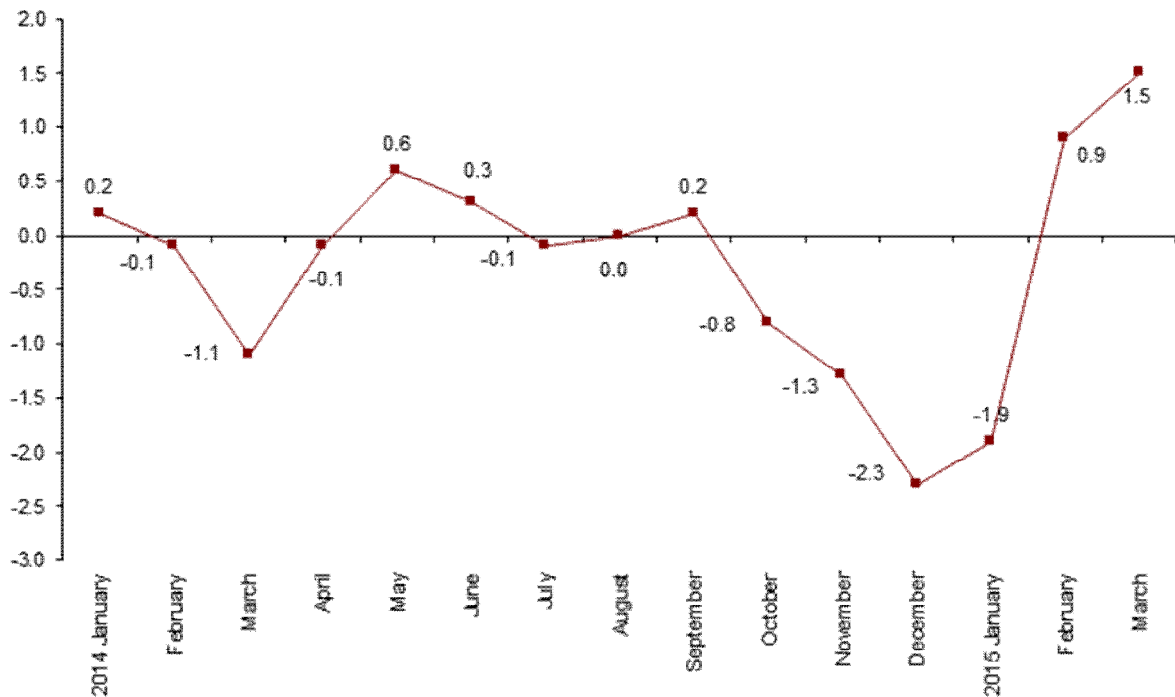
A more detailed analysis showed that, among the divisions recording an increase in their annual rates, worth noting were:

- **Manufacture of coke and refined petroleum products**, whose rate increased more than four points as compared with the previous month, reaching **-12.9%**. This behaviour is due to the increase in the prices of this industry, which decreased in April 2014.
- **Extraction of crude petroleum and natural gas**, whose rate increased seven tenths, reaching **-23.6%**. This evolution was due to the raise in the prices of this activity this month.
- **Manufacture of computer, electronic and optical products**, with a **5.7%** variation rate, more than one point higher than that registered in March and the greatest one since the beginning of the series in January 2006.

## Monthly evolution of import prices

In April, the monthly variation of the Import Price Index was **0.4%**.

Monthly evolution of the IPRIM  
General index



By economic destination of the goods, all the sectors had a positive effect on the general index. Among them, worth noting:

- **Energy**, with a variation of **1.4%** and an effect of **0.299**, due to the increase in the prices of *Manufacture of coke and refined petroleum products* and *Extraction of crude petroleum and natural gas*.
- **Intermediate goods**, with a variation of **0.3%** and an effect of **0.087**. It is worth noting the increase in prices of *Manufacture of wearing apparel*
- **Capital goods**, whose variation stood at **0.2%** and an effect of **0.048** on the general IPRIM.

In turn, the only industrial sector with a negative contribution to the general index was:

- **Non-durable consumer goods**, whose variation stood at **0.0%** and had an effect of **-0.008** on the general IPRIM.



A more detailed analysis showed the activities that most affected the monthly rate of the IPRIM in the month of April.

**Activities with the greatest positive effect on the monthly rate of the IPRIM**

<b>Activity (CNAE-09 divisions)</b>	<b>Monthly rate (%)</b>	<b>Effect</b>
Manufacture of coke and refined petroleum products	3.0	0.170
Extraction of crude petroleum and natural gas	0.7	0.112
Manufacture of chemicals and chemical products	0.3	0.034
Manufacture of computer, electronic and optical products	0.4	0.028
Mining of metal ores	1.9	0.026
Manufacture of electrical equipment	0.4	0.017
Mining of coal and lignite	3.4	0.016
Manufacture of basic pharmaceutical products and pharmaceutical preparations	0.3	0.014
Other manufacturing	0.3	0.008

**Activities with the greatest negative effect on the monthly rate of the IPRIM**

<b>Activity (CNAE-09 divisions)</b>	<b>Monthly rate (%)</b>	<b>Effect</b>
Manufacture of food products	-0.4	-0.030
Manufacture of rubber and plastic products	-0.3	-0.008
Manufacture of wearing apparel	-0.0	-0.001
Manufacture of paper and paper products	-0.0	-0.001

## Export and Import Price Indices of Industrial Products. Base 2010 April 2015

Provisional data

### 1. Export Indices: general index and by economic destination of the goods

	Index	% Variation			Effect	
		Monthly	Year to date	Annual	Monthly	Year to date
GENERAL INDEX	104.3	0.6	1.1	1.5		
Consumer goods	106.8	0.2	1.9	2.4	0.036	0.417
- Durable consumer goods	98.7	0.4	2.0	2.1	0.011	0.052
- Non-durable consumer goods	109.2	0.1	1.9	2.5	0.025	0.365
Capital goods	103.0	0.4	0.4	1.3	0.129	0.138
Intermediate goods	106.7	0.7	1.3	1.9	0.253	0.495
Energy	83.5	2.7	0.4	-4.2	0.139	0.019

### 2. Import Indices: general index and by economic destination of the goods

	Index	% Variation			Effect	
		Monthly	Year to date	Annual	Monthly	Year to date
GENERAL INDEX	105.7	0.4	1.0	-2.4		
Consumer goods	109.8	0.0	2.6	4.4	-0.008	0.698
- Durable consumer goods	103.9	0.0	2.6	4.6	0.000	0.147
- Non-durable consumer goods	111.7	0.0	2.6	4.3	-0.008	0.550
Capital goods	102.0	0.2	1.8	2.2	0.048	0.422
Intermediate goods	108.6	0.3	1.1	2.8	0.087	0.292
Energy	102.3	1.4	-2.0	-20.1	0.299	-0.445

### 3. Indices in aggregates of domestic and international markets (IPRI+IPRIX): general and by economic destination of the goods

	Index	% Variation			Effect	
		Monthly	Year to date	Annual	Monthly	Year to date
GENERAL INDEX	107.5	0.4	0.7	-0.3		
Consumer goods	107.8	0.1	1.0	1.5	0.025	0.274
- Durable consumer goods	101.5	0.2	0.6	0.9	0.004	0.015
- Non-durable consumer goods	108.9	0.1	1.1	1.5	0.021	0.259
Capital goods	102.5	0.2	0.3	0.9	0.046	0.065
Intermediate goods	106.6	0.5	0.8	0.5	0.166	0.249
Energy	112.2	1.0	0.7	-5.4	0.201	0.138

#### 4. Export indices: general index and by branch of activity (CNAE 2009)

	Index	Monthly		Annual
		% Variation	Effect	% Variation
<b>GENERAL INDEX</b>	104.3	0.6		1.5
<b>B. Mining and quarrying industries</b>	147.6	0.9	0.006	15.2
Extraction of metallic ores	214.3	2.1	0.005	25.2
Other mining and quarrying	116.8	0.2	0.001	10.4
<b>C. Manufacture industry</b>	105.1	0.5	0.491	1.0
Food industry	112.1	0.2	0.015	1.6
Manufacture of beverages	107.7	0.3	0.005	1.0
Tobacco industry	112.1	0.0	0.000	1.1
Textile industry	111.5	-0.1	-0.002	3.6
Manufacture of garments	107.3	-0.5	-0.003	3.6
Leather and footwear industry	114.1	0.3	0.003	3.7
Manufacture of wood and of products of wood and cork, except furniture; basketmaking and wickerwork	108.2	0.2	0.002	0.9
Paper industry	108.3	0.5	0.013	1.6
Printing and service activities related to printing	103.0	0.7	0.004	5.4
Manufacture of coke and refined petroleum products	97.3	2.1	0.079	-17.5
Chemical industry	110.7	1.5	0.145	-0.5
Manufacture of pharmaceutical products	105.2	0.1	0.005	4.4
Manufacture of rubber and plastic materials	107.8	0.2	0.007	1.2
Manufacture of other non-metallic ore products	106.6	-0.4	-0.011	2.5
Metallurgy; manufacture of basic iron and steel and of ferro-alloy products	102.6	0.9	0.078	5.2
Manufacture of metal products, except machinery and equipment	103.4	-0.2	-0.008	0.8
Manufacture of computer, electronic and optical products	75.5	0.5	0.009	-2.2
Manufacture of electrical material and equipment	102.7	0.4	0.019	1.1
Manufacture of machinery and equipment n.e.c.	105.6	0.0	0.000	0.9
Manufacture of motor vehicles, trailers and semi-trailers	102.6	0.6	0.131	1.9
Manufacture of other transport material	101.9	0.0	0.000	0.1
Manufacture of furniture	104.1	0.0	0.000	0.5
Other manufacturing industries	109.3	0.1	0.001	3.7
Repair and installation of machinery and equipment	102.5	0.0	0.000	0.0
<b>D. Supply of electrical energy and gas</b>	53.6	4.1	0.060	42.5

## 5. Import indices: general index and by branch of activity (CNAE 2009)

	Index	Monthly		Annual
		% Variation	Effect	% Variation
<b>GENERAL INDEX</b>	105.7	0.4		-2.4
<b>B. Mining and quarrying industries</b>	101.1	0.9	0.155	-20.5
Extraction of anthracite, coal and lignite	96.2	3.4	0.016	7.2
Extraction of crude petroleum and natural gas	101.1	0.7	0.112	-23.6
Extraction of metallic ores	101.2	1.9	0.026	8.2
Other mining and quarrying	114.8	0.5	0.001	4.3
<b>C. Manufacture industry</b>	106.9	0.3	0.270	1.8
Food industry	118.8	-0.4	-0.030	2.7
Manufacture of beverages	105.2	0.1	0.000	0.3
Tobacco industry	121.7	0.2	0.001	4.5
Textile industry	120.6	0.3	0.004	6.0
Manufacture of garments	117.2	0.0	-0.001	8.1
Leather and footwear industry	121.3	0.3	0.005	10.7
Manufacture of wood and of products of wood and cork, except furniture; basketmaking and wickerwork	116.9	0.6	0.004	7.6
Paper industry	106.6	0.0	-0.001	1.1
Manufacture of coke and refined petroleum products	105.2	3.0	0.170	-12.9
Chemical industry	111.7	0.3	0.034	0.5
Manufacture of pharmaceutical products	94.4	0.3	0.014	0.7
Manufacture of rubber and plastic materials	111.4	-0.3	-0.008	1.3
Manufacture of other non-metallic ore products	110.0	0.5	0.005	3.4
Metallurgy; manufacture of basic iron and steel and of ferro-alloy products	102.2	0.0	0.000	3.0
Manufacture of metal products, except machinery and equipment	107.2	0.1	0.003	2.6
Manufacture of computer, electronic and optical products	94.5	0.4	0.028	5.7
Manufacture of electrical material and equipment	107.8	0.4	0.017	5.9
Manufacture of machinery and equipment n.e.c.	108.2	0.1	0.006	3.3
Manufacture of motor vehicles, trailers and semi-trailers	101.4	0.1	0.006	0.0
Manufacture of other transport material	110.1	0.1	0.002	2.4
Manufacture of furniture	108.9	0.4	0.004	4.5
Other manufacturing industries	110.5	0.3	0.008	6.9
<b>D. Supply of electrical energy and gas</b>	86.1	1.2	0.001	61.7

## 6. Indices in aggregates of domestic and international markets (IPRI+IPRIX): general and by branch of activity (CNAE 2009)

	Index	Monthly		Annual
		% Variation	Effect	% Variation
<b>GENERAL INDEX</b>	107.5	0.4		-0.3
<b>B. Mining and quarrying industries</b>	110.4	0.2	0.002	3.0
Extraction of anthracite, coal and lignite	108.6	0.7	0.001	-1.8
Extraction of metallic ores	200.0	1.5	0.002	17.2
Other mining and quarrying	104.6	-0.1	-0.001	1.7
<b>C. Manufacture industry</b>	106.3	0.5	0.425	-0.5
Food industry	112.5	0.2	0.024	0.9
Manufacture of beverages	109.2	0.1	0.004	1.1
Tobacco industry	118.6	0.0	0.000	2.6
Textile industry	107.9	0.0	0.000	1.0
Manufacture of garments	99.7	-0.5	-0.005	0.7
Leather and footwear industry	109.4	0.1	0.001	1.7
Manufacture of wood and of products of wood and cork, except furniture; basketmaking and wickerwork	105.7	0.3	0.004	1.1
Paper industry	106.0	0.3	0.006	0.8
Printing and service activities related to printing	107.6	0.0	0.000	4.0
Manufacture of coke and refined petroleum products	103.8	2.8	0.189	-18.3
Chemical industry	110.3	1.4	0.098	-1.7
Manufacture of pharmaceutical products	102.2	0.1	0.002	2.2
Manufacture of rubber and plastic materials	107.7	0.1	0.005	-0.1
Manufacture of other non-metallic ore products	103.1	-0.2	-0.007	1.0
Metallurgy; manufacture of basic iron and steel and of ferro-alloy products	103.3	0.8	0.045	4.6
Manufacture of metal products, except machinery and equipment	102.0	0.0	-0.003	0.2
Manufacture of computer, electronic and optical products	82.7	0.2	0.002	-1.9
Manufacture of electrical material and equipment	105.0	0.3	0.011	0.7
Manufacture of machinery and equipment n.e.c.	104.5	0.0	0.000	0.6
Manufacture of motor vehicles, trailers and semi-trailers	102.1	0.4	0.037	1.3
Manufacture of other transport material	102.2	0.4	0.010	1.5
Manufacture of furniture	103.9	0.0	0.000	0.6
Other manufacturing industries	106.9	0.4	0.003	2.0
Repair and installation of machinery and equipment	100.4	-0.1	-0.001	-0.3
<b>D. Supply of electrical energy and gas</b>	115.0	0.1	0.011	1.6
<b>E. Supply of water</b>	116.6	0.0	0.000	0.8

For further information see **INEbase** - [www.ine.es/en/](http://www.ine.es/en/) All press releases at: [www.ine.es/en/prensa/prensa\\_en.htm](http://www.ine.es/en/prensa/prensa_en.htm)

**Press Office:** Telephone numbers: 91 583 93 63 / 94 08 – Fax: 91 583 90 87 - [gprensa@ine.es](mailto:gprensa@ine.es)

**Information Area:** Telephone number: 91 583 91 00 – Fax: 91 583 91 58 – [www.ine.es/infoine](http://www.ine.es/infoine)