

4 November 2014

**Export and Import Price Indices of Industrial Products. Base 2010**  
September 2014. *Provisional data*

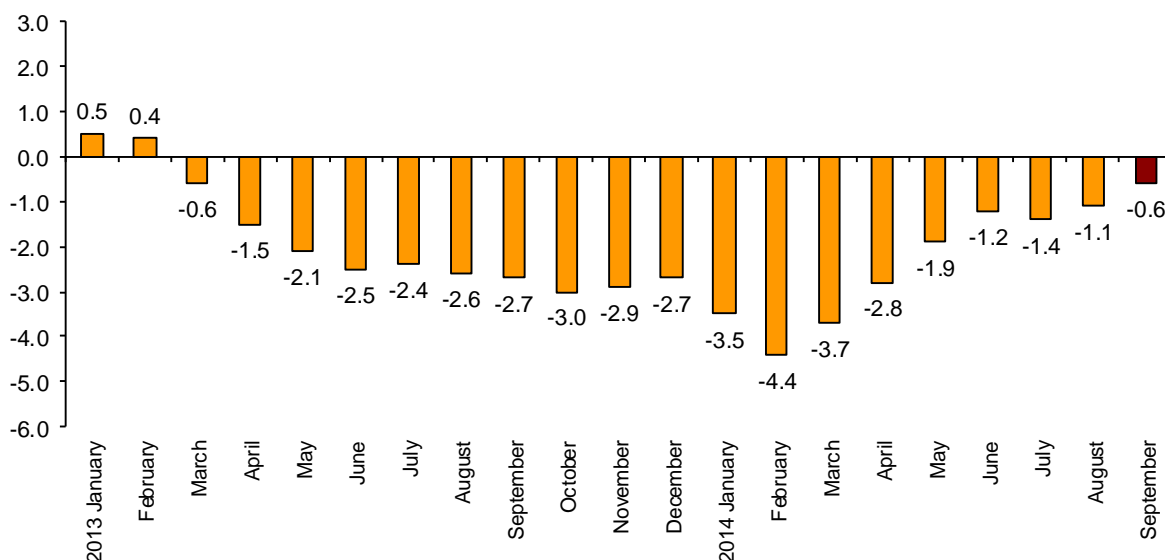
**The annual variation rate of the IPRIX stands at  $-0.6\%$ , five tenths above that registered in August**

**The annual variation rate of the IPRIM is  $-1.6\%$ , one tenth below that registered in the previous month**

**Annual evolution of export prices**

The annual rate of the Export Price Index (IPRIX) for the month of September was  $-0.6\%$ , five tenths above that registered in August.

**Annual Evolution of the IPRIX**  
**General index**



By economic destination of the goods, among the industrial sectors contributing to the increase registered in the annual rate of the IPRIX, worth noting:

- **Energy**, whose variation rate increased by more than seven points, reaching **1.4%**. This evolution was due to the increase in the prices of *Electric power generation, transmission and distribution*, whose annual rate stood at 16.1%, the highest registered since October 2011.

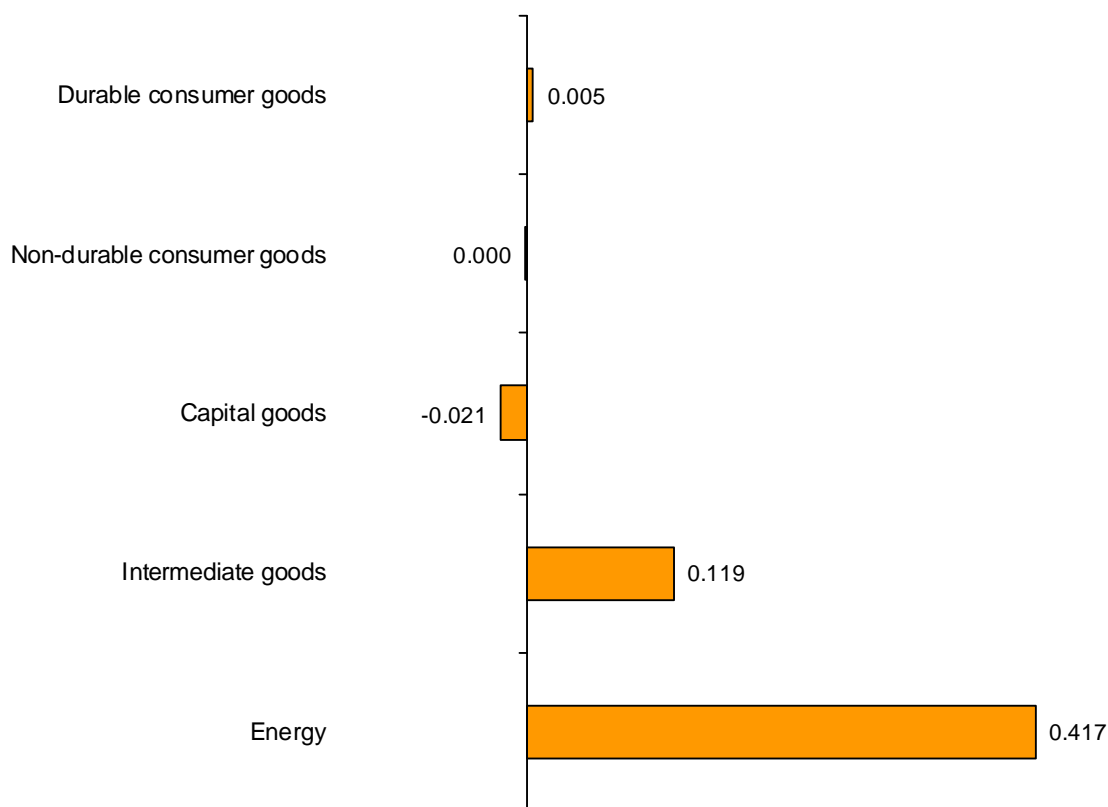
It is also worth noting, although to a lesser extent, that the prices in *Manufacture of refined petroleum products* increased, as compared to the decrease in the previous year.

• **Intermediate goods**, which registered an annual variation of **-0.1%**, three tenths higher than that registered in August. This variation was due to the increase in the prices of *Manufacture of basic precious and other non-ferrous metals*, *Manufacture of basic iron and steel and of ferro-alloys* and *Manufacture of rubber products*, which decreased in September 2013.

In fact, *Manufacture of basic precious and other non-ferrous metals* and *Manufacture of basic iron and steel and of ferro-alloys* registered their highest annual rate since September 2011 and December 2011, respectively.

Within this sector, worth noting was the increase of nine tenths in the annual rate of *Manufacture of basic chemicals, fertilisers and nitrogen compounds, plastics and synthetic rubber in primary forms*, which recorded a greater decrease in prices this month, as compared with the decrease registered in 2013.

**Contribution of the industrial sectors to the annual rate of the IPRIX**

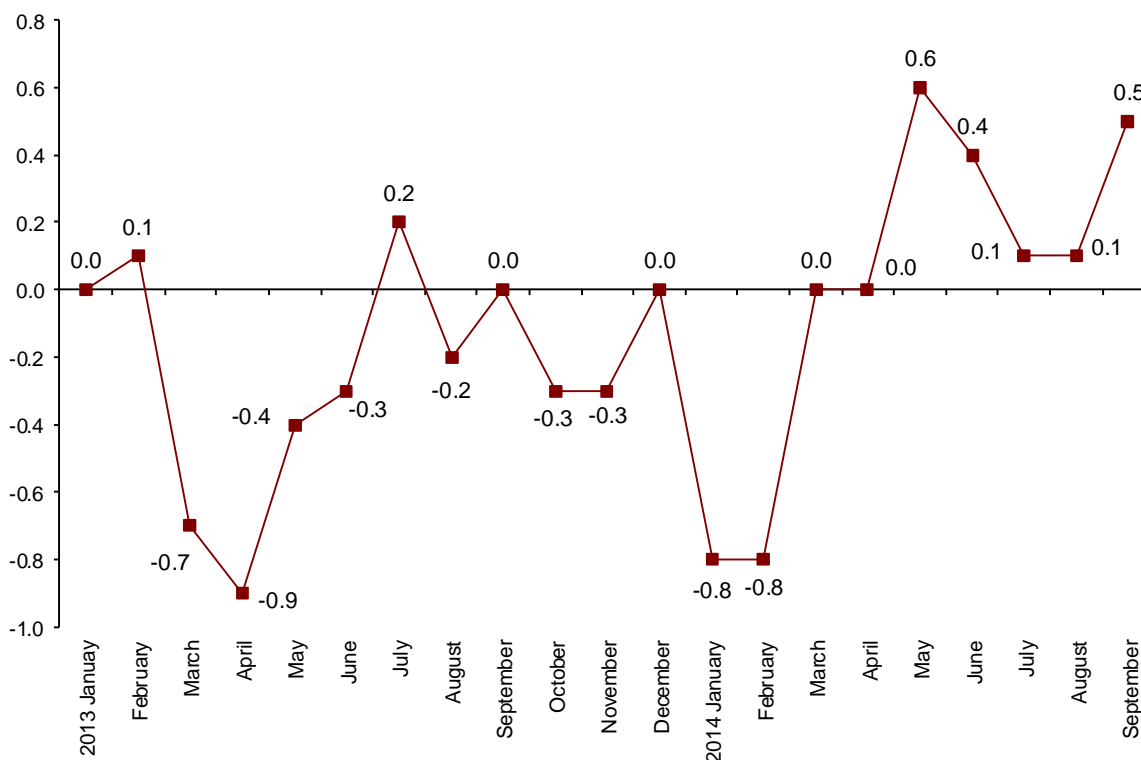


**DIFFERENCE OF THE ANNUAL RATE OF THE GENERAL IPRIX 0.5**

## Monthly evolution of export prices

In September 2014, the industrial export prices registered a **0.5%** monthly variation, as compared with the previous month.

**Monthly evolution of the IPRIX  
General index**



By economic destination of the goods, all the industrial sectors registered a positive effect on the monthly general index. Among them, worth noting:

- **Energy**, which registered a rate of **6.6%**. This behaviour was mainly due to the increase in the prices of *Electric power generation, transmission and distribution*. Its contribution to the general index was **0.359**.

- **Intermediate goods**, which registered a monthly rate of **0.2%** and a contribution of **0.072**. This behaviour was due to the increase in prices of *Manufacture of basic precious and other non-ferrous metals* and *Manufacture of rubber products*. It is also worth noting the decrease in prices of *Manufacture of basic chemicals, fertilisers and nitrogen compounds, plastics and synthetic rubber in primary forms*.

- **Capital goods**, which registered a monthly rate of **0.1%**. Worth noting in this behaviour is the increase in prices of *Manufacture of motor vehicles*. Its contribution in the IPRIX was **0.022**.

- **Non-durable consumer goods**, which registered a monthly rate of **0.1%**. Its contribution to the general index was **0.020**.

A more detailed analysis showed the activities that most contributed to the monthly rate of the IPRIX in the month of September.

**Activities with the greatest positive contribution to the monthly rate of the IPRIX**

<b>Activity (CNAE-09)</b>	<b>Monthly rate (%)</b>	<b>Contribution</b>
Electric power generation, transmission and distribution	22.0	0.356
Manufacture of basic precious and other non-ferrous metals	1.0	0.032
Manufacture of vegetable and animal oils and fats	1.5	0.020
Manufacture of rubber products	1.1	0.018

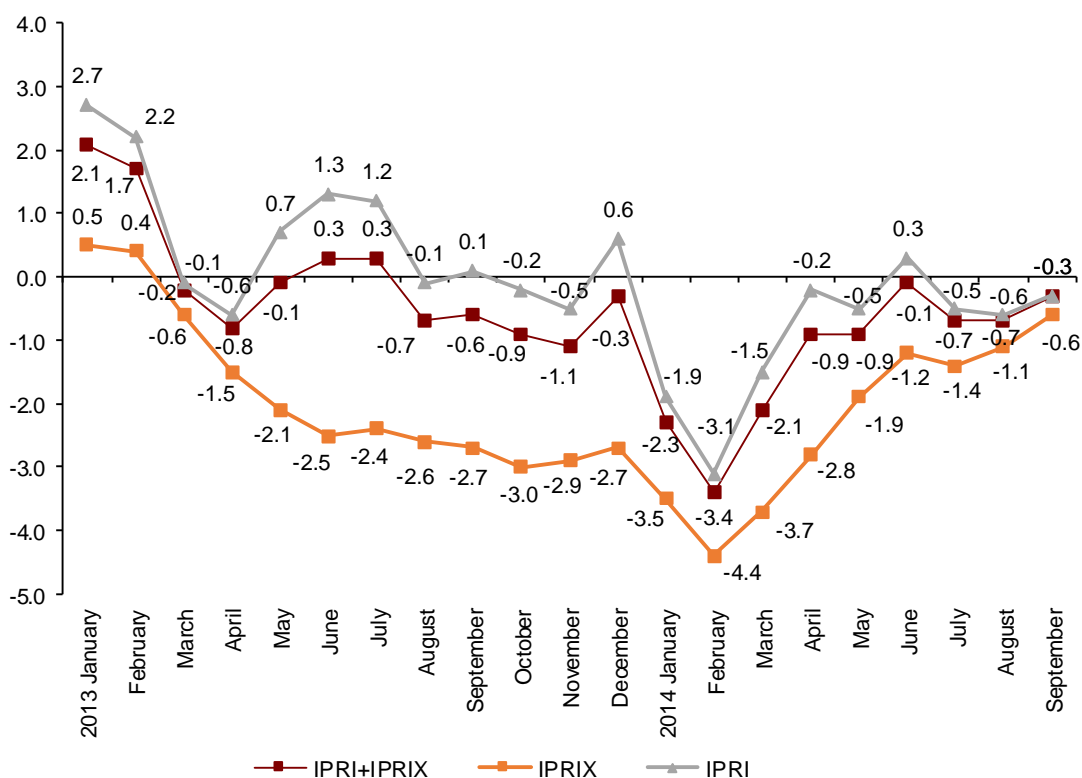
**Activities with the greatest negative contribution to the monthly rate of the IPRIX**

<b>Activity (CNAE-09)</b>	<b>Monthly rate (%)</b>	<b>Contribution</b>
Manufacture of basic chemicals, fertilisers and nitrogen compounds, plastics and synthetic rubber in primary forms	-1.0	-0.067
Processing and preserving of meat and production of meat products	-2.1	-0.044
Processing and preserving of fish, crustaceans and molluscs	-0.8	-0.006

## Annual evolution of industrial prices of domestic and international markets in aggregate

In September, the Industrial Price Index of the domestic and international markets, obtained from the addition of the IPRI and the IPRIX, registered an annual rate of **-0.3%**, the same as that registered in August.

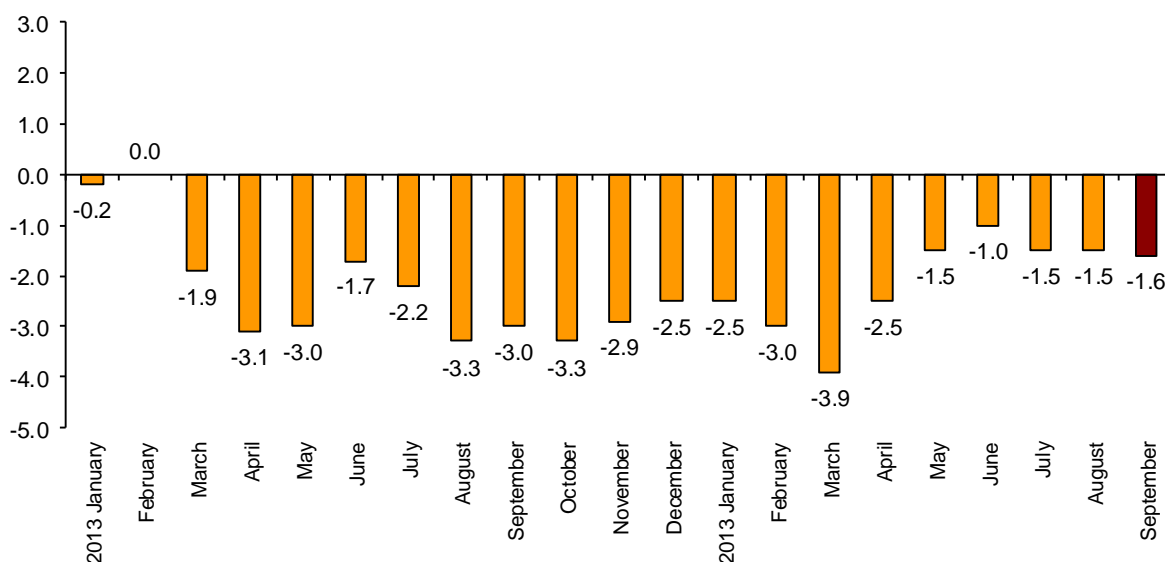
**Annual evolution of the IPRI+IPRIX, IPRIX and IPRI**  
General index



## Annual evolution of import prices

The Import Price Index (IPRIM) registered an annual rate of **-1.6%** in September, one tenth below that registered in August.

**Annual evolution of the IPRIM**  
General index



By economic destination of the goods, the industrial sector that contributed the most to the decrease in the annual rate of the IPRIM was:

- **Energy**, whose rate decreased by one point and a half, standing at **-6.4%**. This was due to the decrease in the prices of *Extraction of crude petroleum and natural gas*, which increased in September 2013.

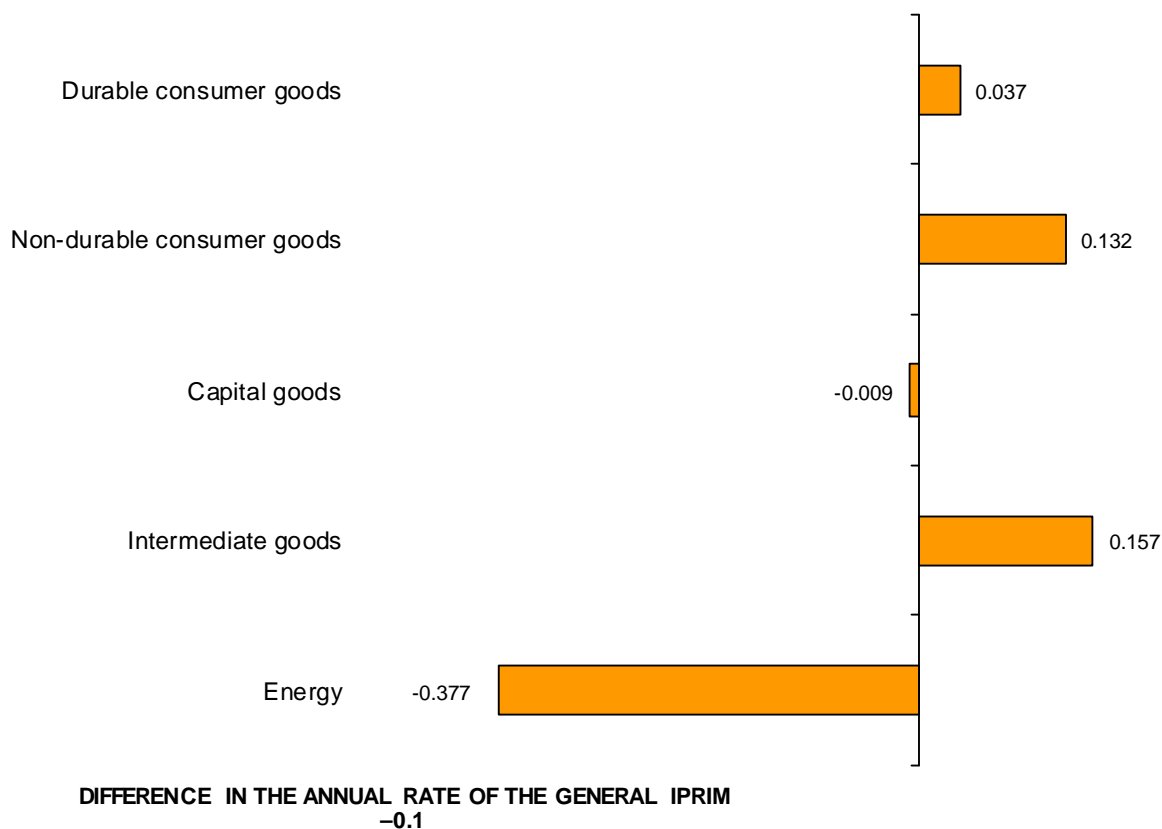
Furthermore, prices of *Manufacture of coke and refined petroleum products* increased more than one point in the annual rate within this sector, whereas they decreased in September 2013.

In turn, among the industrial sectors that increased their annual rate, worth noting:

- **Intermediate goods**, with a **0.2%** rate, increasing by five tenths, due to the increase in the prices of *Metallurgy; manufacture of basic iron and steel and of ferro-alloys* which decreased in September 2013. In fact, this activity registered its highest annual rate since December 2011.

- **Non-durable consumer goods**, with a rate of **0.9%**, that is, seven tenths higher than that registered in August. This was due to the increase in prices of *Manufacture of wearing apparel* and *Manufacture of pharmaceutical products*, which decreased in September 2013.

**Contribution of the industrial sectors to the anual rate of the IPRIM**



A more detailed analysis showed the sectors that registered the greatest decreases in their annual rates. Among them, worth noting:

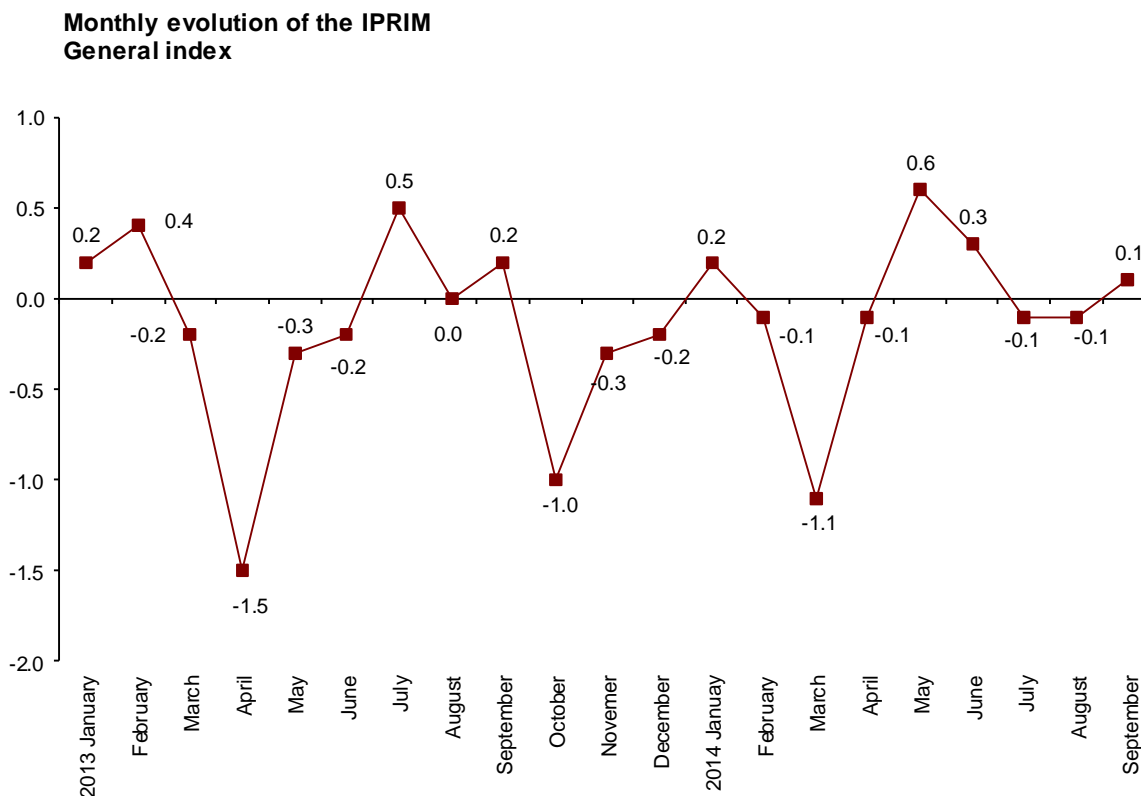
- **Extraction of crude petroleum and natural gas**, whose rate decreased by two points and a half, reaching **-7.7%**, due to the decrease in the prices of this activity this month, whereas they increased in the previous year.
- **Manufacture of motor vehicles, trailers and semi-trailers**, with a **-0.4%** variation, seven tenths lower than that registered in August. This was due to the decrease in prices during this month, as compared to the increase registered in September 2013.

In turn, among the industrial sectors that increased their annual rate, worth noting:

- **Manufacture of computer, electronic and optical products**, whose rate increased by more than one point and a half, standing at **-4.0%**.
- **Manufacture of coke and refined petroleum products**, which increased its annual rate more than one point, reaching **-2.6%**.
- **Manufacture of chemicals and chemical products**, with a **0.4%** variation, four tenths higher than that registered in August.
- **Manufacture of wearing apparel**, whose annual rate increased one point, reaching **2.1%**, as compared with August.

## Monthly evolution of import prices

In September, the monthly variation of the Import Price Index was **0.1%**.



By economic destination of the goods, the industrial sectors with a monthly positive effect in the general index were:

- **Intermediate goods**, which registered a variation of **0.5%**, and an effect of **0.124**.
- **Non-durable consumer goods**, whose monthly rate stood at **0.5%**, due to the increase in the prices of *Manufacture of wearing apparel*. This sector had an effect of **0.103** in the general index.
- **Durable consumer goods**, whose monthly rate stood at **0.5%** and had an effect of **0.026** in the general IPRIM.

In turn, among the sectors registering a negative effect in the general index, worth noting:

- **Energy**, with a variation rate of **-0.6%** and an effect of **-0.140**. This was due to the decrease in the prices of *Extraction of crude petroleum and natural gas*.



A more detailed analysis showed the activities with the greatest effect on the monthly rate of the IPRIM in September.

**Activities with the greatest positive contribution to the monthly rate of the IPRIM**

<b>Activity (CNAE-09)</b>	<b>Monthly rate (%)</b>	<b>Contribution</b>
Manufacture of coke and refined petroleum products	0.9	0.057
Manufacture of computer, electronic and optical products	0.5	0.039
Manufacture of wearing apparel	0.8	0.034
Manufacture of chemicals and chemical products	0.3	0.032
Manufacture of electrical equipment	0.6	0.023
Manufacture of leather and related products	1.3	0.020
Mining of metal ores	1.5	0.020

**Activities with the greatest negative contribution to the monthly rate of the IPRIM**

<b>Activity (CNAE-09)</b>	<b>Monthly rate (%)</b>	<b>Contribution</b>
Extraction of crude petroleum and natural gas	-1.2	-0.209
Manufacture of motor vehicles, trailers and semi-trailers	-0.2	-0.020
Manufacture of tobacco products	-0.3	-0.002

## Export and Import Price Indices of Industrial Products. Base 2010 September 2014

Provisional data

### 1. Export Indices: general index and by economic destination of the goods

	Index	% Variation			Effect	
		Monthly	Year to date	Annual	Monthly	Year to date
GENERAL INDEX	104.5	0.5	0.1	-0.6		
Consumer goods	104.8	0.1	-0.1	-1.2	0.022	-0.023
- Durable consumer goods	96.6	0.1	-1.5	-2.6	0.002	-0.041
- Non-durable consumer goods	107.2	0.1	0.1	-1.0	0.020	0.017
Capital goods	102.1	0.1	-0.5	-1.0	0.022	-0.161
Intermediate goods	105.9	0.2	0.5	-0.1	0.072	0.198
Energy	104.8	6.6	1.5	1.4	0.359	0.087

### 2. Import Indices: general index and by economic destination of the goods

	Index	% Variation			Effect	
		Monthly	Year to date	Annual	Monthly	Year to date
GENERAL INDEX	109.3	0.1	-0.2	-1.6		
Consumer goods	106.5	0.5	0.9	0.5	0.129	0.245
- Durable consumer goods	100.5	0.5	0.6	-0.8	0.026	0.034
- Non-durable consumer goods	108.4	0.5	1.0	0.9	0.103	0.211
Capital goods	99.9	0.0	0.0	-1.0	-0.005	0.003
Intermediate goods	107.3	0.5	1.2	0.2	0.124	0.335
Energy	128.9	-0.6	-3.1	-6.4	-0.140	-0.747

### 3. Indices in aggregates of domestic and international markets (IPRI+IPRIX): general and by economic destination of the goods

	Index	% Variation			Effect	
		Monthly	Year to date	Annual	Monthly	Year to date
GENERAL INDEX	109.9	0.5	0.0	-0.3		
Consumer goods	106.7	-0.1	0.3	-0.7	-0.025	0.074
- Durable consumer goods	100.8	0.1	0.0	-0.3	0.002	0.001
- Non-durable consumer goods	107.8	-0.1	0.3	-0.7	-0.027	0.073
Capital goods	102.0	0.1	0.2	-0.2	0.027	0.037
Intermediate goods	106.4	0.1	0.1	-0.5	0.034	0.030
Energy	128.5	2.2	-0.6	0.1	0.442	-0.126

#### 4. Export indices: general index and by branch of activity (CNAE 2009)

	Index	Monthly		Annual
		% Variation	Effect	% Variation
<b>GENERAL INDEX</b>	104.5	0.5		-0.6
<b>B. Mining and quarrying industries</b>	134.1	1.3	0.009	2.4
Extraction of metallic ores	187.9	1.2	0.003	2.6
Other mining and quarrying	108.0	1.4	0.006	2.2
<b>C. Manufacture industry</b>	104.8	0.1	0.110	-0.8
Food industry	110.6	-0.2	-0.014	-3.1
Manufacture of beverages	106.2	0.2	0.003	-2.6
Tobacco industry	111.2	0.0	0.000	-3.5
Textile industry	109.0	0.9	0.011	0.9
Manufacture of garments	106.6	1.5	0.007	3.8
Leather and footwear industry	111.3	0.3	0.004	1.9
Manufacture of wood and of products of wood and cork, except furniture; basketmaking and wickerwork	108.2	0.6	0.004	1.1
Paper industry	107.3	0.4	0.011	0.8
Printing and service activities related to printing	99.1	0.2	0.001	1.0
Manufacture of coke and refined petroleum products	118.7	0.1	0.002	-3.8
Chemical industry	111.3	-0.5	-0.054	-0.2
Manufacture of pharmaceutical products	102.2	0.4	0.018	2.2
Manufacture of rubber and plastic materials	107.2	0.7	0.031	-2.0
Manufacture of other non-metallic ore products	105.2	0.3	0.009	0.5
Metallurgy; manufacture of basic iron and steel and of ferro-alloy products	101.2	0.4	0.039	1.8
Manufacture of metal products, except machinery and equipment	103.2	0.3	0.016	0.4
Manufacture of computer, electronic and optical products	74.6	0.4	0.006	-13.1
Manufacture of electrical material and equipment	101.6	0.0	0.001	-1.1
Manufacture of machinery and equipment n.e.c.	104.7	0.0	0.000	-0.3
Manufacture of motor vehicles, trailers and semi-trailers	101.2	0.1	0.013	-1.5
Manufacture of other transport material	101.8	0.0	0.000	0.0
Manufacture of furniture	103.7	0.1	0.001	0.1
Other manufacturing industries	105.3	0.1	0.000	1.7
Repair and installation of machinery and equipment	102.5	0.0	0.000	1.4
<b>D. Supply of electrical energy and gas</b>	72.5	22.0	0.356	16.1

## 5. Import indices: general index and by branch of activity (CNAE 2009)

	Index	Monthly		Annual
		% Variation	Effect	% Variation
<b>GENERAL INDEX</b>	109.3	0.1		-1.6
<b>B. Mining and quarrying industries</b>	127.5	-1.0	-0.191	-7.2
Extraction of anthracite, coal and lignite	87.5	-0.3	-0.001	-8.2
Extraction of crude petroleum and natural gas	132.0	-1.2	-0.209	-7.7
Extraction of metallic ores	100.8	1.5	0.020	-0.2
Other mining and quarrying	110.2	0.1	0.000	-1.2
<b>C. Manufacture industry</b>	106.1	0.4	0.286	-0.2
Food industry	115.8	0.1	0.008	-0.9
Manufacture of beverages	104.8	0.0	0.000	0.5
Tobacco industry	121.3	-0.3	-0.002	3.1
Textile industry	115.9	1.4	0.019	1.7
Manufacture of garments	111.3	0.8	0.034	2.1
Leather and footwear industry	113.0	1.3	0.020	1.6
Manufacture of wood and of products of wood and cork, except furniture; basketmaking and wickerwork	111.4	0.8	0.005	3.9
Paper industry	105.2	0.6	0.009	-1.7
Manufacture of coke and refined petroleum products	124.4	0.9	0.057	-2.6
Chemical industry	111.9	0.3	0.032	0.4
Manufacture of pharmaceutical products	93.9	0.3	0.014	0.2
Manufacture of rubber and plastic materials	110.6	0.3	0.009	-0.3
Manufacture of other non-metallic ore products	107.1	0.2	0.002	0.7
Metallurgy; manufacture of basic iron and steel and of ferro-alloy products	102.4	0.1	0.003	1.1
Manufacture of metal products, except machinery and equipment	105.4	0.3	0.008	0.2
Manufacture of computer, electronic and optical products	89.9	0.5	0.039	-4.0
Manufacture of electrical material and equipment	103.1	0.6	0.023	0.5
Manufacture of machinery and equipment n.e.c.	105.6	0.2	0.013	0.7
Manufacture of motor vehicles, trailers and semi-trailers	101.1	-0.2	-0.020	-0.4
Manufacture of other transport material	107.9	0.1	0.003	1.7
Manufacture of furniture	105.3	0.3	0.003	0.8
Other manufacturing industries	105.4	0.2	0.005	0.6
<b>D. Supply of electrical energy and gas</b>	95.8	32.7	0.013	10.3

## 6.Indices in aggregates of domestic and international markets (IPRI+IPRIX): general and by branch of activity (CNAE 2009)

	Index	Monthly		Annual
		% Variation	Effect	% Variation
<b>GENERAL INDEX</b>	109.9	0.5		-0.3
<b>B. Mining and quarrying industries</b>	108.3	0.0	0.000	1.0
Extraction of anthracite, coal and lignite	110.7	-2.2	-0.002	5.5
Extraction of metallic ores	182.2	0.3	0.000	0.7
Other mining and quarrying	103.1	0.3	0.002	0.3
<b>C. Manufacture industry</b>	107.2	0.0	0.023	-0.9
Food industry	111.6	-0.3	-0.051	-2.2
Manufacture of beverages	107.9	0.0	0.001	-0.5
Tobacco industry	117.0	0.0	0.000	0.8
Textile industry	107.0	0.3	0.003	0.6
Manufacture of garments	99.8	0.4	0.004	0.4
Leather and footwear industry	108.2	0.2	0.002	1.3
Manufacture of wood and of products of wood and cork, except furniture; basketmaking and wickerwork	105.2	0.2	0.002	1.0
Paper industry	105.0	0.2	0.005	0.0
Printing and service activities related to printing	105.2	-0.2	-0.003	0.6
Manufacture of coke and refined petroleum products	126.5	-0.2	-0.011	-5.3
Chemical industry	112.3	-0.4	-0.031	-0.5
Manufacture of pharmaceutical products	100.9	0.1	0.004	1.7
Manufacture of rubber and plastic materials	107.9	0.2	0.008	-0.7
Manufacture of other non-metallic ore products	102.8	0.3	0.012	0.0
Metallurgy; manufacture of basic iron and steel and of ferro-alloy products	102.0	0.8	0.043	1.5
Manufacture of metal products, except machinery and equipme	101.8	0.2	0.010	-0.3
Manufacture of computer, electronic and optical products	82.4	0.1	0.001	-7.4
Manufacture of electrical material and equipment	104.2	0.0	0.000	-0.3
Manufacture of machinery and equipment n.e.c.	104.0	0.0	0.000	0.5
Manufacture of motor vehicles, trailers and semi-trailers	101.2	0.1	0.008	-0.9
Manufacture of other transport material	102.0	0.5	0.012	0.8
Manufacture of furniture	103.6	0.1	0.002	0.7
Other manufacturing industries	105.1	0.4	0.003	0.9
Repair and installation of machinery and equipment	100.4	0.1	0.001	0.3
<b>D. Supply of electrical energy and gas</b>	129.9	3.7	0.454	2.9
<b>E. Supply of water</b>	115.3	0.1	0.001	1.9

For further information see **INEbase** - [www.ine.es/en/](http://www.ine.es/en/) All press releases at: [www.ine.es/en/prensa/prensa\\_en.htm](http://www.ine.es/en/prensa/prensa_en.htm)

**Press Office:** Telephone numbers: 91 583 93 63 / 94 08 – Fax: 91 583 90 87 - [gprensa@ine.es](mailto:gprensa@ine.es)

**Information Area:** Telephone number: 91 583 91 00 – Fax: 91 583 91 58 – [www.ine.es/infoine](http://www.ine.es/infoine)