

7 March 2013

Non-Hotel Tourist Accommodation Occupancy Survey
January 2013. *Provisional data*

Overnight stays in non-hotel tourist accommodation decrease 0.1%⁽¹⁾ in January, as compared with the same month of 2012

Overnight stays in non-hotel tourist accommodation (holiday dwellings, campsites and rural tourism accommodation) exceeded 4.7 million in January, 0.1% less than in the same month of 2012. Overnight stays by resident travellers decreased 11.7%, whilst by non-residents increased 2.5%. The average stay increased 4.5%, standing at 8.1 overnights per traveller.

Travellers and overnight stays in collective non-hotel tourist accommodation during the month of January were:

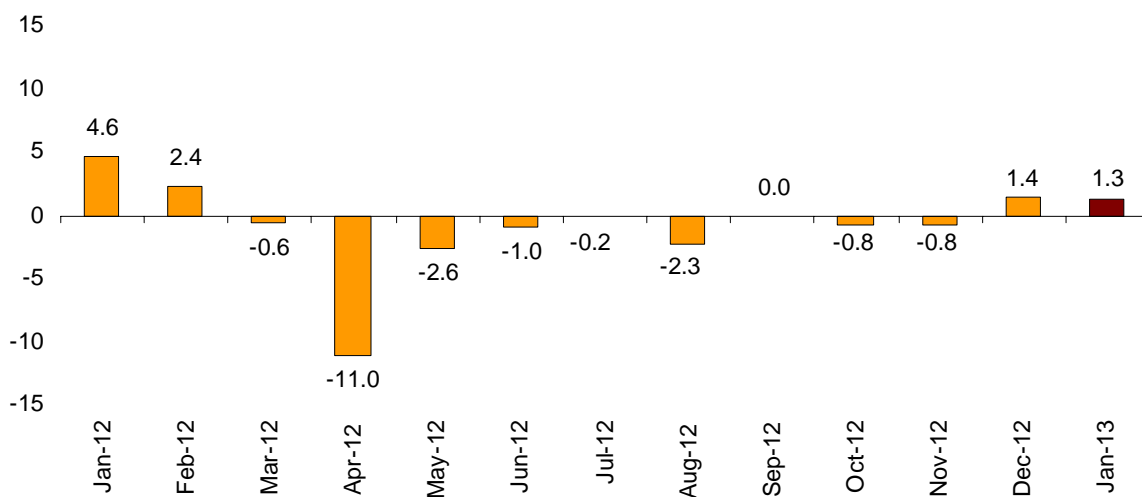
January 2012	Travellers	Overnight stays
Residents in Spain	219,153	765,383
EU (not including Spain)	312,521	3,456,588
Rest of the world	59,127	551,991
TOTAL	590,801	4,773,962

Holiday Dwellings

Overnight stays in holiday dwellings increased 1.3% in January. Overnight stays of residents decreased 9.0%, whilst of non-residents increased 2.9%.

The average stay increased 2.9%, as compared with January 2012, standing at 8.9 overnights stays per traveller.

Overnight stays annual growth rate in holiday dwellings in %

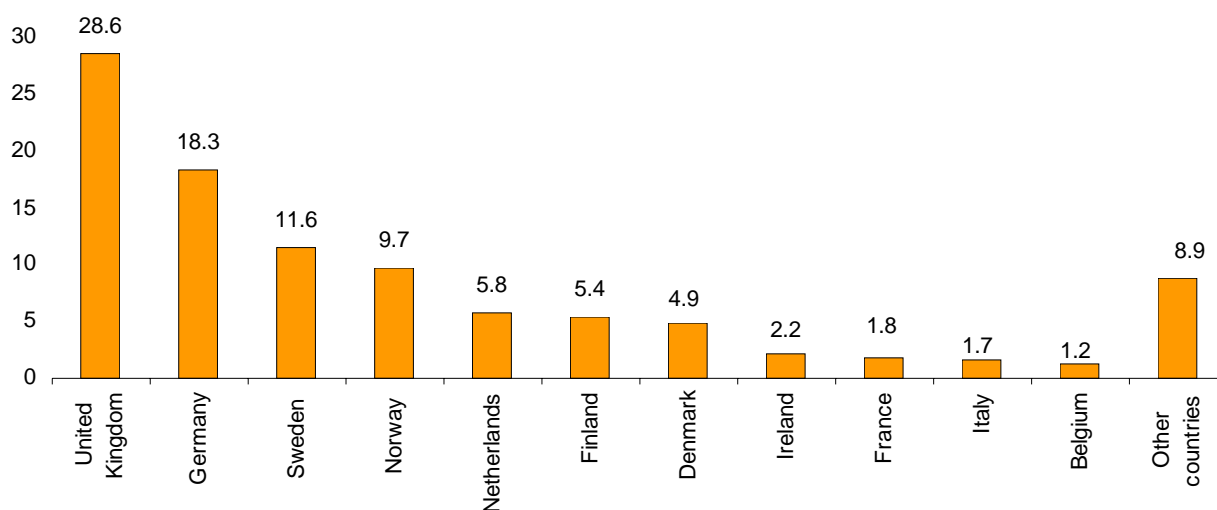


⁽¹⁾ Due to the update made in the rural tourist accommodation directory in Región de Murcia, the data published cannot be directly compared to those published last year. In order to avoid this break in the series, linking coefficients have been calculated, allowing for comparing the data from different years. The coefficients are published monthly on the INE website, in the section dedicated to this statistical operation, in a specific section entitled linking coefficients.

In January, 33.5% of the total available bedplaces for holiday dwellings were occupied, 2.4% less than in January 2012. The weekend occupancy rate by bedplaces stood at 34.2%, with an annual decrease of 1.8%.

Non-resident overnight stays in holiday dwellings represented 88.2% of the total. The United Kingdom was the main country of origin, with 943,471 overnight stays, 12.3% more than in January last year. The following country of origin was Germany, with 602,382 overnight stays, 3.9% more.

Distribution of overnight stays of residents abroad of the 11 main countries by origin



Canarias was the preferred holiday dwelling destination, with 1.4% more overnight stays and Comunitat Valenciana, with 2.6% more. Canarias presented the highest occupancy rate with 78.4% of the dwellings offered.

By tourist area, the island of Gran Canaria was the preferred destination, with more than 1.1 million of overnight stays and an occupancy rate of 87.7%.

The tourist sites with the greatest number of overnight stays were San Bartolomé de Tirajana, Mogán and Arona.

Campsites

The overnight stays in tourist campsites registered an annual decrease of 0.7%, in January. Overnight stays by resident travellers decreased 6.8%, whilst non-resident travellers increased 0.9%.

33.8% of the offered pitches were occupied, 1.3% less. The weekend occupancy rate by pitch reached 34.7%, with an annual decrease of 3.0%.

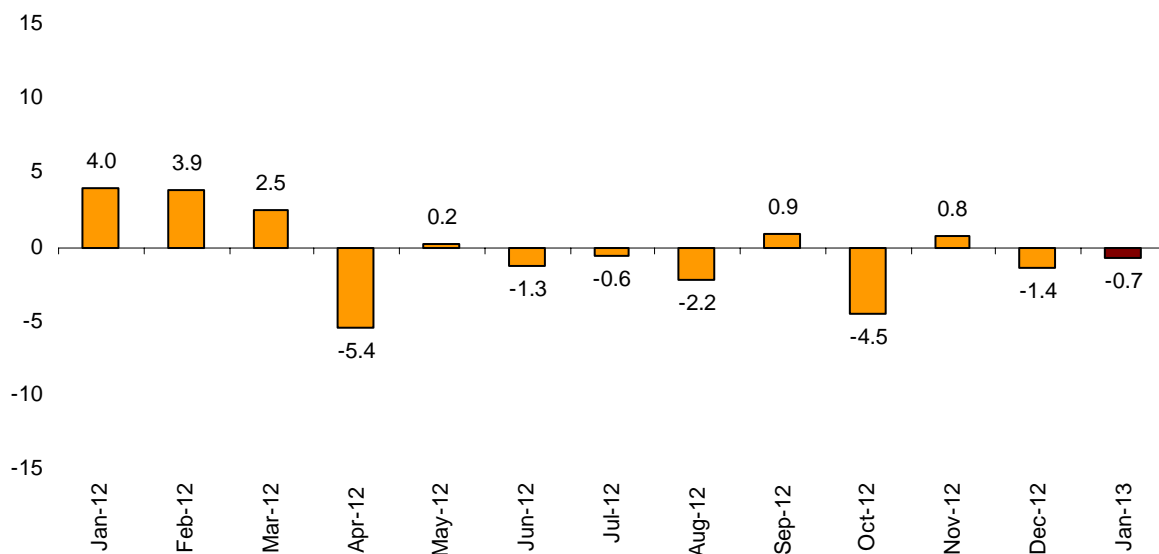
80.6% of the overnight stays on tourist campsites were by non-residents. The United Kingdom was the main country of origin, with 35.6% of the overnight stays by non-residents, 1.2% less than in January 2012.

Comunitat Valenciana was the preferred destination for camping, with 409,292 overnight stays, 2.0% more. La Rioja reached the highest occupancy rate on campsites, with 65.0% of the pitches offered.

By tourist area, Costa Blanca was the preferred destination for camping, with 237,233 overnight stays and an occupancy rate of 66.6% of the pitches offered.

The tourist sites with the highest number of overnight stays were Benidorm, Cartagena and Marbella.

Overnight stays annual growth rate in campsites in %

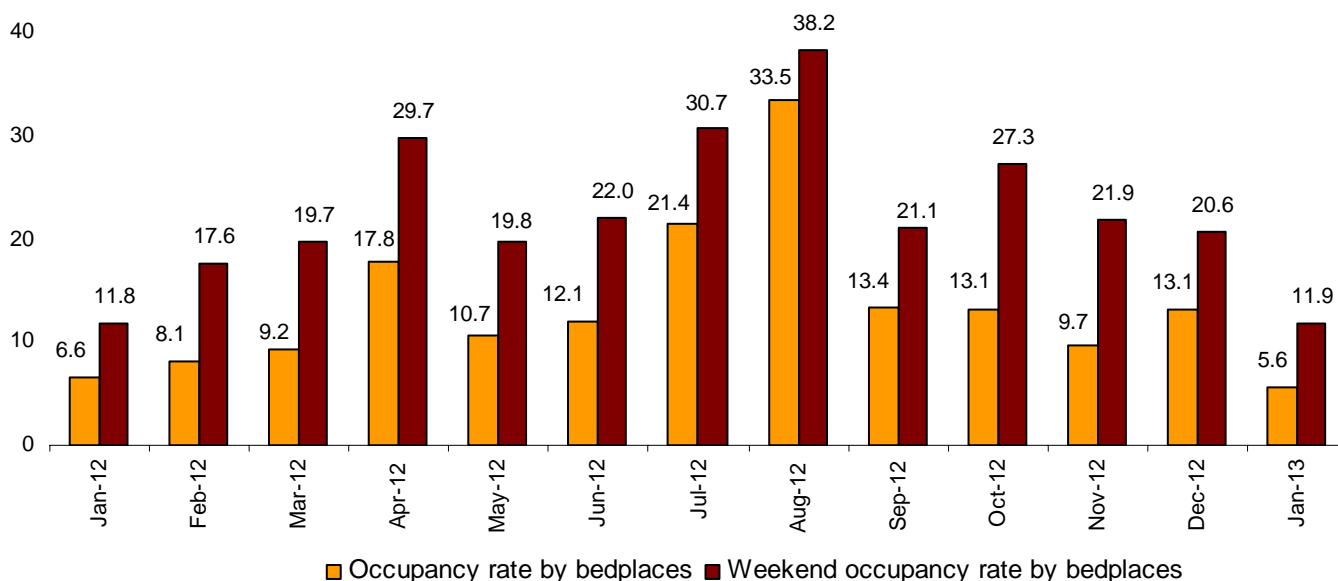


Rural Tourism Accommodation

Overnight stays in rural tourism accommodation presented an annual decrease of 17.7%⁽¹⁾, in January. Resident overnight stays decreased 21.6%, and those of non-residents grew 4.5%.

5.6% of the bedplaces in rural tourism accommodation were occupied, representing a 14.7% of annual decrease. The weekend occupancy rate stood at 11.9%, with a decrease of 0.2%.

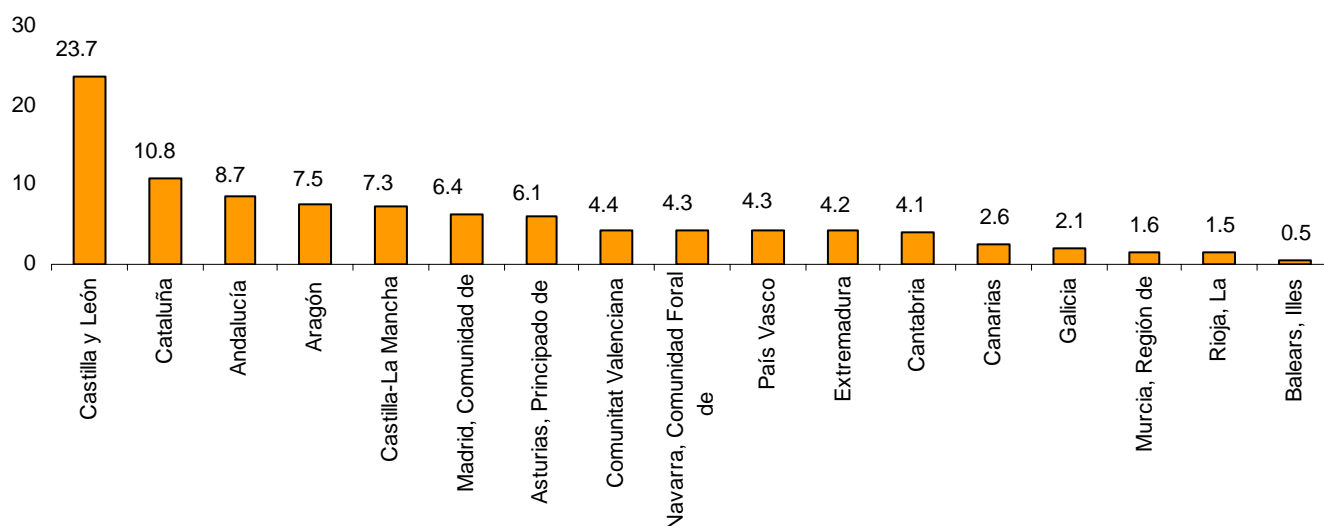
Occupancy rate by bedplaces and bedplaces on weekends



Castilla y León was the preferred destination, with 40,040 overnight stays, 17.9% less than in January 2012. Canarias reached the highest occupancy rate, with 25.7% of the offered bedplaces.

By tourist area, the island of Tenerife was the main destination, with 12,804 overnight stays. The Teide National Park reached the greatest occupancy rate, 40.2% of the offered bedplaces.

Distribution of overnight stays of traveller residents by autonomous community of destination in %



7 March 2013

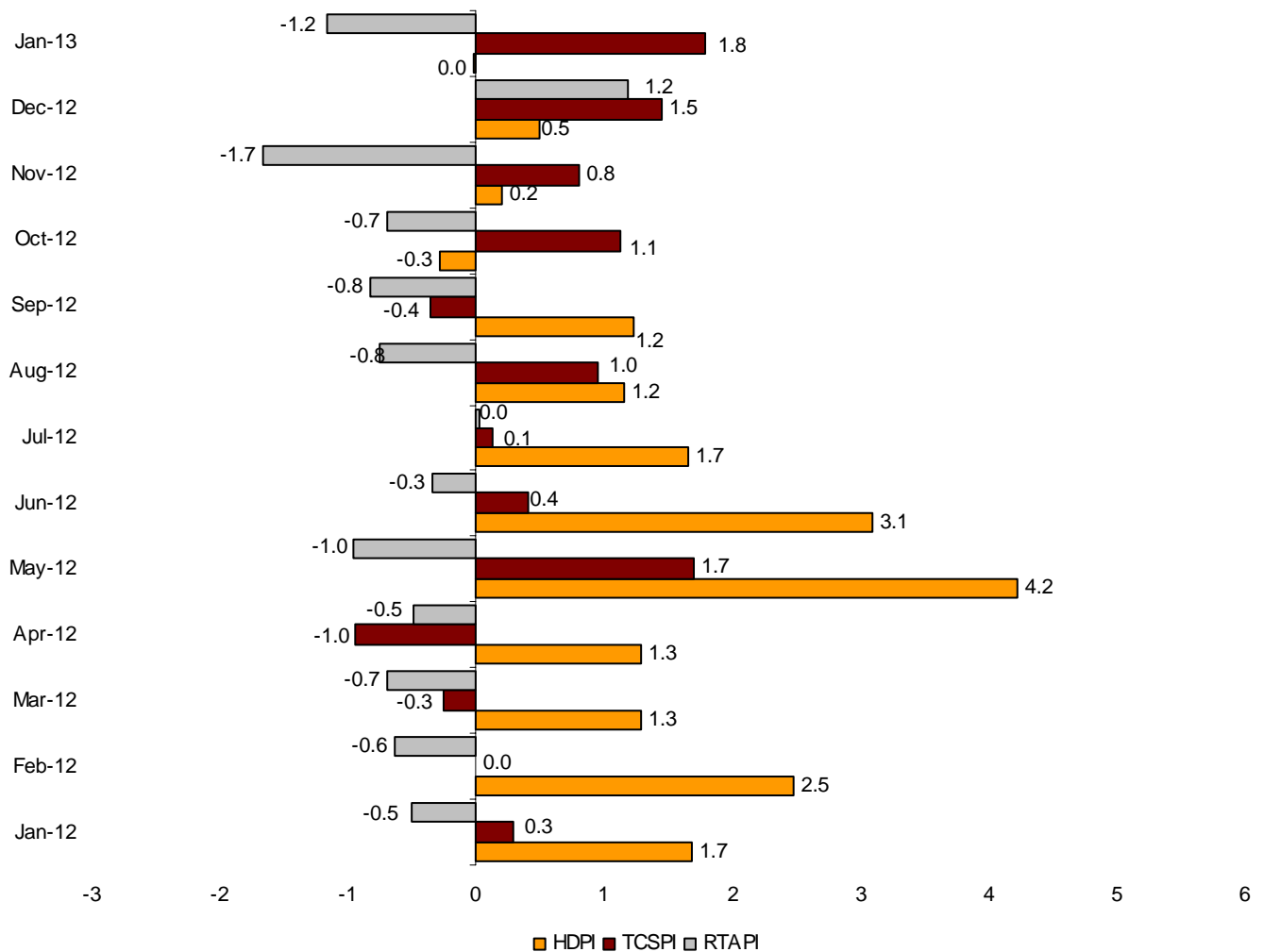
Price Indices

The Holiday Dwelling Price Index maintained its rate, as compared with January 2012. The *tour operators and travel agencies* rate, which carried the greatest weight in the weighting structure for this month (60.5%), registered a decrease of 0.1%.

The Tourist Campsite Price Index registered an increase of 1.8% in the annual rate. The *special rate for stays longer than one month*, which had the greatest weight in the weighting structure for this month (47.9%), increased 3.0%.

The Rural Tourism Accommodation Price Index registered a decrease of 1.2% in January. The *weekend* rate, which accounted for 64.3% of the total weight, decreased 0.7%.

Price Indices. Interannual variation rates



Performance of travellers and overnight stays in all Spanish collective tourist accommodation in January

Overnight stays in Spanish collective tourist accommodation (hotels, holiday dwellings, campsites and rural tourism accommodation) registered an annual decrease of 3.8%⁽¹⁾, in January, as compared with the same month of the last year.

Overnight stays by residents decreased 12.3%, whereas non-resident stays increased 0.6%.

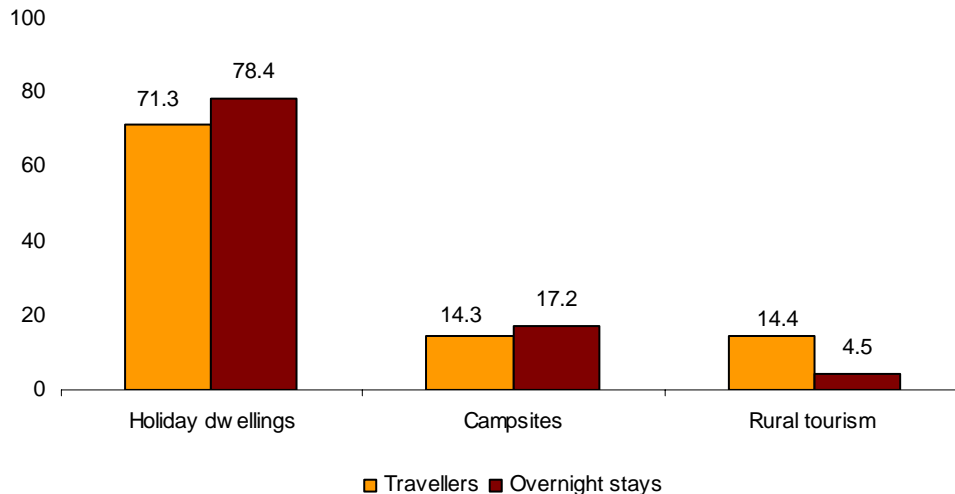
The average stay increased 3.9%, standing at 3.9 nights per traveller.

Travellers and overnight stays in collective tourist accommodation were:

January 2013	Holiday dwellings	Campsites	Rural T.	Non-hotel	Hotels	Total
Travellers	421,318	84,681	84,801	590,800	3,718,199	4,308,999
Residents	94,210	48,891	76,052	219,153	2,111,103	2,330,256
Non-residents	327,108	35,790	8,750	371,648	1,607,096	1,978,744
Overnight stays	3,741,424	819,367	213,171	4,773,962	11,943,145	16,717,107
Residents	440,830	159,342	165,211	765,383	4,446,448	5,211,831
Non-residents	3,300,594	660,025	47,960	4,008,579	7,496,697	11,505,276

Of the total overnight stays in collective tourist accommodation in the month of January, 71% were accounted for hotels, and 29% did so for non-hotel tourist accommodation.

Distribution of travellers and overnight stays by modality over total non-hotel accommodation in %



The main countries of origin in overall regulated tourist accommodation were United Kingdom (with 24.3% of the total number of non-resident overnight stays), Germany (23.3%) and Netherlands (5.0%).

Canarias was the preferred destination regarding overall tourist accommodation, with more than 7.9 million overnight stays (0.2% less than in January 2012). It was followed by Andalucía, with more than 1.8 million overnight stays (7.6% less) and Cataluña, with more than 1.6 million overnight stays (5.4% less).

Tourist Accommodation Occupancy Survey (Holiday Dwellings)

January 2013 Provisional data

1. Travellers, overnight stays and average stay by Autonomous Cities and Communities

Autonomous Cities and Communities	Travellers			Overnight stays			Average stay
	Total	Residents in Spain	Residents abroad	Total	Residents in Spain	Residents abroad	
TOTAL	421,318	94,210	327,108	3,741,424	440,830	3,300,594	8.88
Andalucía	40,233	16,849	23,384	207,269	52,450	154,819	5.15
Aragón	6,436	5,984	452	29,275	26,801	2,474	4.55
Asturias, Principado de	331	318	13	2,635	2,435	200	7.96
Balears, Illes	1,789	505	1,284	18,483	1,790	16,693	10.33
Canarias	288,462	20,619	267,843	2,966,051	123,153	2,842,898	10.28
Cantabria	834	702	132	4,424	4,018	405	5.30
Castilla y León	2,282	2,181	100	7,063	6,474	589	3.10
Castilla - La Mancha	1,630	1,591	39	7,425	6,022	1,403	4.55
Cataluña	22,875	13,301	9,574	140,190	92,872	47,318	6.13
Comunitat Valenciana	25,644	10,808	14,835	222,891	43,663	179,229	8.69
Extremadura	1,082	955	127	2,035	1,806	229	1.88
Galicia	1,703	1,482	221	5,263	4,632	631	3.09
Madrid, Comunidad de	22,308	14,178	8,130	93,279	51,077	42,202	4.18
Murcia, Región de	1,318	786	532	17,845	9,229	8,616	13.54
Navarra, Comunidad Foral de	1,928	1,779	149	7,699	6,922	777	3.99
País Vasco	1,311	1,022	289	6,858	4,751	2,107	5.23
Rioja, La	1,153	1,150	4	2,740	2,736	4	2.38
Ceuta	-	-	-	-	-	-	-
Melilla	-	-	-	-	-	-	-
Interannual rate	-1.51	-6.18	-0.08	1.33	-9.04	2.90	2.89
Cumulative interannual rate	-1.51	-6.18	-0.08	1.33	-9.04	2.90	2.89

2. Capacity, occupancy and number of staff by Autonomous Cities and Communities

Autonomous Cities and Communities	Capacity		Level of occupancy				Employed personnel
	Estimated bedplaces	Estimated Holiday dwelling	Per bedplaces	Per bedplaces at weekenc	Per Holiday dwelling	Per Holiday dwelling at weekenc	
TOTAL	359,595	100,086	33.50	34.17	55.71	56.27	18,806
Andalucía	47,521	12,333	14.23	15.63	24.97	26.58	2,379
Aragón	5,979	1,404	15.79	21.14	21.17	26.79	446
Asturias, Principado de	2,258	598	3.76	3.67	7.05	6.42	156
Balears, Illes	2,935	825	20.20	20.43	38.38	38.09	252
Canarias	181,377	56,286	52.55	52.56	78.42	78.29	10,599
Cantabria	2,333	676	6.12	7.00	13.01	14.15	143
Castilla y León	3,623	773	6.34	10.12	12.82	17.59	317
Castilla - La Mancha	4,518	1,121	5.30	7.09	11.10	13.84	345
Cataluña	23,387	5,765	19.33	21.70	35.13	37.42	1,058
Comunitat Valenciana	63,868	13,665	11.25	11.51	22.91	23.36	1,526
Extremadura	1,333	327	4.92	8.03	8.55	13.39	118
Galicia	2,812	805	6.03	7.61	13.41	14.34	168
Madrid, Comunidad de	7,607	3,163	39.36	41.98	53.45	54.58	566
Murcia, Región de	5,925	1,349	9.72	9.45	19.48	19.35	192
Navarra, Comunidad Foral de	1,788	404	13.89	15.43	27.82	29.13	406
País Vasco	1,343	367	16.52	19.04	35.40	36.74	63
Rioja, La	988	224	8.94	19.09	14.93	27.64	72
Ceuta	-	-	-	-	-	-	-
Melilla	-	-	-	-	-	-	-
Interannual rate	4.08	4.23	-2.40	-1.82	-1.32	-1.54	2.35
Cumulative interannual rate	4.08	4.23	-2.40	-1.82	-1.32	-1.54	2.35

3. Travellers, overnight stays, capacity, occupancy, total number of staff with greater number of overnight stays *

Provinces	Travellers		Overnight stays		Average stay	Capacity		Level of occupancy			Employed personnel
	Residents in Spain	Residents abroad	Residents in Spain	Residents abroad		Estimated bed-places	Estimated holiday dwelling	Per bed-places	Per Holiday dwelling	Per Holiday dwelling at weekend	
Palmas, Las	13,940	174,454	84,456	1,912,283	10.60	124,286	38,551	51.60	78.86	78.82	6,536
Santa Cruz de Tenerife	6,678	93,389	38,698	930,615	9.69	57,091	17,735	54.62	77.45	77.12	4,063
Alicante\Alacant	7,184	12,626	30,974	162,803	9.78	49,056	10,666	12.74	25.68	26.00	1,198
Málaga	4,539	16,163	17,847	122,588	6.78	28,078	6,922	16.46	29.73	29.87	1,546
Barcelona	6,969	8,170	73,251	41,091	7.55	10,831	3,111	34.05	54.96	56.90	548
Sevilla	4,871	4,185	14,825	12,442	3.01	4,199	1,384	20.91	36.98	41.55	193
Valencia\València	3,040	1,936	9,387	9,959	3.89	7,394	1,577	8.41	17.82	19.30	218
Granada	3,534	1,391	10,666	7,889	3.77	3,966	1,088	15.07	22.43	26.80	270
Huesca	3,513	16	17,409	118	4.97	3,541	793	15.96	19.14	24.84	276
Girona	2,685	1,077	8,502	4,765	3.53	8,606	1,832	4.97	9.88	10.69	309
Almería	600	686	2,089	9,263	8.82	4,358	1,083	8.40	14.13	14.61	63
Lleida	3,116	116	9,778	317	3.12	2,374	484	13.66	21.52	33.00	140
Castellón\Castelló	585	273	3,302	6,467	11.38	7,418	1,423	4.25	7.74	8.07	110
Teruel	1,447	48	6,342	853	4.81	1,609	382	14.42	18.60	26.46	107
Zaragoza	1,024	387	3,051	1,503	3.23	828	229	17.71	32.49	34.13	63

4. Travellers, overnight stays, capacity, occupancy, total number of staff from tourist areas with greater number of overnight stays

Tourist Areas	Travellers		Overnight stays		Average stay	Capacity		Level of occupancy			Employed personnel
	Residents in Spain	Residents abroad	Residents in Spain	Residents abroad		Estimated bed-places	Estimated holiday dwelling	Per bed-places	Per Holiday dwelling	Per Holiday dwelling at weekend	
Isla de Gran Canaria	5,271	101,994	34,969	1,152,741	11.07	64,487	20,438	59.17	87.74	87.47	3,203
Isla de Tenerife	5,456	87,699	30,004	861,466	9.57	50,273	15,409	57.05	81.29	80.83	3,533
Isla de Lanzarote	6,115	52,198	37,648	542,285	9.95	41,366	12,433	45.05	70.47	70.79	2,438
Isla de Fuerteventura	2,554	20,261	11,838	217,257	10.04	18,433	5,680	39.80	65.26	65.30	895
Costa Blanca	6,798	12,296	29,582	158,651	9.86	46,517	10,181	13.05	26.15	26.48	1,154
Costa del Sol	4,324	16,118	17,165	122,449	6.83	26,740	6,567	16.84	30.40	30.48	1,471
Catalunya Central	129	35	50,230	9,352	31.00	2,502	908	76.83	87.77	88.37	45
Isla de La Palma	772	3,480	3,542	38,410	9.87	3,287	1,134	41.04	52.48	52.56	265
Isla de La Gomera	365	2,180	4,428	30,475	13.71	3,148	1,084	35.75	55.34	56.47	238
Barcelona	5,166	7,088	9,641	23,863	2.73	4,399	1,111	24.55	42.64	50.97	362

5. Travellers, overnight stays, capacity, occupancy, total number of staff from tourist sites with greater number at overnights stays

Tourist sites	Travellers		Overnight stays		Average stay	Capacity		Level of occupancy			Employed personnel
	Residents in Spain	Residents abroad	Residents in Spain	Residents abroad		Estimated bed-places	Estimated holiday dwelling	Per bed-places	Per Holiday dwelling	Per Holiday dwelling at weekend	
San Bartolomé de Tirajana	4,163	66,207	29,912	740,711	10.95	43,434	13,601	57.06	87.99	87.68	2,003
Mogán	341	33,198	2,464	390,304	11.71	19,601	6,204	64.24	89.46	89.32	1,096
Arona	941	37,647	7,238	362,554	9.58	21,429	6,570	55.62	77.54	76.88	1,471
Tías	2,235	31,181	12,148	328,425	10.19	21,576	6,777	50.65	76.68	76.51	1,086
Adeje	1,157	27,202	7,514	252,992	9.19	14,886	4,254	56.36	85.15	84.27	1,028
Teguise	3,262	11,729	20,263	120,269	9.37	11,617	3,506	38.95	59.16	60.22	757
Puerto de la Cruz	2,658	9,042	12,470	117,141	11.08	6,977	2,639	59.57	81.78	81.33	530
Benidorm	3,146	8,125	13,221	96,462	9.73	15,739	3,850	22.48	40.79	40.63	538
Madrid	13,823	8,039	48,001	40,352	4.04	6,962	2,892	40.73	55.07	56.24	499
Antigua	974	8,276	4,451	79,148	9.04	6,306	1,907	42.46	70.96	71.58	319

* Provinces belonging to uniprovincial Autonomous Communities have not been included because they are reflected in previous tables.

8. Travellers and overnight stays by countries of residence

Countries	Travellers		Overnight stays	
	Total	%	Total	%
TOTAL	421,318	100.00	3,741,424	100.00
Residents in Spain	94,210	22.36	440,830	11.78
Residents abroad	327,108	77.64	3,300,594	88.22
Total residents abroad	327,108	100.00	3,300,594	100.00
Total residents in E.U (excluding Spain)	271,239	82.92	2,773,579	84.03
- Germany	41,258	12.61	602,382	18.25
- Austria	1,632	0.50	21,660	0.66
- Belgium	3,943	1.21	40,450	1.23
-Denmark	14,932	4.56	161,893	4.90
- Finland	19,117	5.84	179,070	5.43
- France	8,478	2.59	58,294	1.77
- Greece	104	0.03	789	0.02
- Ireland	9,084	2.78	72,709	2.20
- Italy	7,271	2.22	55,665	1.69
- Luxembourg	501	0.15	4,994	0.15
- Netherlands	16,768	5.13	191,641	5.81
- Poland	2,563	0.78	18,577	0.56
- Portugal	1,622	0.50	7,666	0.23
- United Kingdom	98,743	30.19	943,471	28.58
- Czech Republic	694	0.21	4,690	0.14
- Sweden	41,281	12.62	382,292	11.58
- Other EU countries	3,247	0.99	27,335	0.83
Norway	26,338	8.05	320,077	9.70
Other european countries	12,853	3.93	114,387	3.47
United States of America	1,978	0.60	10,544	0.32
Rest of America	4,435	1.36	32,821	0.99
African countries	3,217	0.98	12,015	0.36
Other countries	7,048	2.15	37,171	1.13

Tourist Accommodation Occupancy Survey Campsite Occupancy Survey (COS) January 2013

Provisional data

1. Travellers, overnight stays and average stay by category of establishment

Category	Travellers			Overnight stays			Average stay
	Total	Residents in Spain	Residents abroad	Total	Residents in Spain	Residents abroad	
TOTAL	84,681	48,891	35,790	819,367	159,342	660,025	9.68
Luxury and first-class	34,910	16,821	18,089	378,344	66,491	311,853	10.84
Second-class	43,601	27,505	16,096	418,899	81,842	337,057	9.61
Third-class	6,170	4,565	1,605	22,124	11,009	11,115	3.59
Interannual rate	-5.54	-14.25	9.70	-0.72	-6.84	0.88	5.10

2. Open establishments, capacity, occupancy and number of staff by category of establishments

Category	Estimated open establishments	Capacity		Occupied pitches	Occupancy rate per pitch	Weekend occupancy rate	Employed personnel
		Estimated bedplaces	Estimated pitches				
TOTAL	422	254,828	80,456	842,058	33.76	34.66	2,495
Luxury and first-class	120	108,069	33,421	344,942	33.29	33.85	1,158
Second-class	237	129,994	41,571	443,527	34.42	35.66	1,155
Third-class	66	16,766	5,464	53,590	31.64	32.36	182
Interannual rate	-0.06	-1.96	-1.29	-2.53	-1.26	-2.95	-2.65

3. Travellers, overnight stays and average stay by Autonomous Cities and Communities

Autonomous cities and communities	Travellers			Overnight stays			Average stay
	Total	Residents in Spain	Residents abroad	Total	Residents in Spain	Residents abroad	
TOTAL	84,681	48,891	35,790	819,367	159,342	660,025	9.68
Andalucía	16,950	4,940	12,010	169,793	26,397	143,396	10.02
Aragón	4,584	3,853	731	12,839	11,608	1,231	2.80
Asturias, Principado de	382	303	79	810	663	147	2.12
Balears, Illes	-	-	-	-	-	-	-
Canarias	1,233	994	239	8,766	2,769	5,997	7.11
Cantabria	201	201	-	526	526	-	2.62
Castilla y León	1,743	683	1,060	2,688	1,404	1,284	1.54
Castilla - La Mancha	700	615	85	1,332	1,209	123	1.90
Cataluña	21,373	17,999	3,373	73,475	49,254	24,221	3.44
Comunitat Valenciana	22,792	10,037	12,755	409,292	38,304	370,987	17.96
Extremadura	1,234	346	888	1,816	519	1,297	1.47
Galicia	96	81	15	173	111	63	1.81
Madrid, Comunidad de	5,388	4,327	1,061	14,066	11,661	2,406	2.61
Murcia, Región de	4,588	1,789	2,799	115,167	7,453	107,714	25.10
Navarra, Comunidad Foral de	1,557	1,298	259	4,024	3,674	350	2.58
País Vasco	603	369	234	2,198	1,659	539	3.65
Rioja, La	1,258	1,056	202	2,402	2,131	271	1.91
Ceuta	-	-	-	-	-	-	-
Melilla	-	-	-	-	-	-	-

4. Open establishments, capacity, occupancy and number of staff by autonomous cities and communities

Autonomous cities and communities	Estimated open establishments	Capacity		Occupied pitches	Occupancy rate per pitch	Weekend occupancy rate	Employed personnel
		Estimated bedplaces	Estimated pitches				
TOTAL	422	254,828	80,456	842,058	33.76	34.66	2,495
Andalucía	101	55,402	17,740	127,421	23.17	24.14	571
Aragón	36	15,888	4,731	32,475	22.14	24.53	136
Asturias, Principado de	6	3,552	1,140	3,917	11.08	12.01	21
Balears, Illes	-	-	-	-	-	-	-
Canarias	5	3,604	1,220	6,846	18.11	19.26	22
Cantabria	8	4,101	1,329	15,136	36.74	36.65	23
Castilla y León	26	9,212	2,803	13,906	16.00	19.59	62
Castilla - La Mancha	13	3,939	1,175	8,721	23.94	24.76	33
Cataluña	62	43,930	13,584	123,075	29.23	32.92	400
Comunitat Valenciana	81	60,695	19,038	298,171	50.52	50.59	685
Extremadura	8	3,093	980	7,259	23.89	23.93	54
Galicia	17	4,749	1,556	2,415	5.01	4.07	50
Madrid, Comunidad de	19	17,145	5,734	80,654	45.37	42.84	176
Murcia, Región de	18	14,232	4,725	67,672	46.20	46.57	143
Navarra, Comunidad Foral de	10	6,223	1,661	14,146	27.48	27.18	56
País Vasco	7	4,428	1,479	8,797	19.19	18.38	27
Rioja, La	5	4,636	1,561	31,447	64.97	63.65	36
Ceuta	-	-	-	-	-	-	-
Melilla	-	-	-	-	-	-	-

5. Travellers and overnight stays, average stay, capacity, occupancy and number of staff by provinces with the greatest number of overnight stays*

Provinces	Travellers		Overnight stays		Average stay	Estimated open establishments	Estimated pitches	Occupancy rate per pitch	Employed personnel
	Residents in Spain	Residents abroad	Residents in Spain	Residents abroad					
	Spain		Spain						
Alicante\Alacant	1,775	6,949	13,965	256,148	30.96	31	8,854	60.13	352
Castellón\Castelló	3,227	4,228	12,358	83,622	12.87	28	5,642	40.81	174
Málaga	1,022	4,949	6,053	74,889	13.56	27	4,638	35.91	153
Almería	533	1,956	8,573	35,110	17.55	19	2,662	31.81	90
Valencia\València	5,035	1,578	11,981	31,218	6.53	21	4,542	43.86	158
Barcelona	7,399	2,469	21,873	20,108	4.25	17	5,223	23.62	169
Cádiz	359	1,729	1,348	15,052	7.85	12	3,011	19.72	112
Granada	780	1,943	2,482	13,153	5.74	21	2,572	14.61	97
Girona	4,780	285	12,000	2,203	2.80	18	3,207	31.44	99
Lleida	4,682	26	12,819	110	2.75	16	2,706	44.02	61
Huelva	1,398	539	6,339	3,787	5.23	8	2,962	13.99	58
Huesca	2,615	98	6,390	332	2.48	24	3,553	25.00	94
Tarragona	1,138	593	2,563	1,800	2.52	11	2,448	21.93	71
Teruel	1,052	49	3,061	169	2.93	8	805	7.42	23
Zaragoza	186	584	2,157	730	3.75	3	373	26.73	19

* Provinces belonging to uniprovincial Autonomous Communities have not been included because they are reflected in previous tables.

6. Travellers, overnight stays, average stay, open establishments, capacity, occupancy and number of staff from tourist areas with the greatest number of overnight stays

Tourist areas	Travellers		Overnight stays		Average stay	Estimated open establishments	Estimated pitches	Occupancy rate per pitch	Employed personnel
	Residents in	Residents abroad	Residents in	Residents abroad					
	Spain		Spain						
Costa Blanca	1,024	5,775	10,446	226,787	31.00	25	6,753	66.56	296
Costa Cálida	900	2,297	4,021	98,370	31.00	10	3,939	47.67	118
Costa de Castellón	1,995	4,039	10,584	82,977	15.51	25	5,361	40.55	164
Costa del Sol	477	4,196	5,198	72,896	16.71	13	3,326	45.77	114
Costa de Almería	444	1,869	8,433	32,231	17.58	13	2,208	33.38	69
Costa Valencia	1,779	1,473	4,332	31,431	11.00	10	2,983	45.44	108
Pirineus*	12,683	-	31,417	118	2.49	35	5,005	44.51	140
Costa Barcelona	2,367	2,454	10,601	19,990	6.35	5	3,874	12.77	109
Costa de la Luz (Cádiz)	209	1,432	886	14,482	9.37	9	2,441	19.56	94
Costa Tropical	334	1,094	1,833	9,778	8.13	7	1,195	24.23	36
Costa de la Luz (Huelva)	581	486	4,849	2,514	6.90	5	2,445	7.83	38
Pirineo Aragonés	2,448	93	6,222	328	2.58	21	3,351	25.34	90
Parque Natural Doñana	669	267	3,374	824	4.49	3	1,071	4.00	22
P. N. Los Alcornocales	178	689	432	3,395	4.41	5	1,000	23.74	41
Costa Brava	706	281	1,642	2,084	3.78	5	1,460	24.85	48

7. Travellers, overnight stays, average stay, open establishments, capacity, occupancy and number of staff from tourist sites with the greatest number at overnights stays

Tourist sites	Travellers		Overnight stays		Average stay	Estimated open establishments	Estimated pitches	Occupancy rate per pitch	Employed personnel
	Residents in	Residents abroad	Residents in	Residents abroad					
	Spain		Spain						
Benidorm	238	2,805	4,125	125,473	31.00	9	3,797	65.64	113
Cartagena	191	1,242	1,727	57,378	31.00	3	2,537	38.95	64
Marbella	111	1,778	3,374	35,120	20.38	3	1,310	46.39	48
Mazarrón	134	967	1,363	33,770	31.00	3	874	70.61	35
Oliva	76	1,165	571	25,283	20.83	5	1,253	36.11	73
Cabanes	30	574	440	24,146	31.00	3	963	41.77	27
Vélez-Málaga	192	864	1,261	21,257	21.32	4	806	52.64	35
Benicasim/Benicàssim	79	971	835	20,853	20.66	3	833	50.57	33
Peñíscola	725	1,516	3,344	16,622	8.91	7	1,138	40.08	35
Campello, El	13	329	1,919	8,259	29.76	3	301	63.75	15
Fortuna	121	361	745	7,319	16.73	3	199	69.91	5
Motril	259	687	877	6,477	7.77	3	723	28.67	24

* Non-significant data

8. Travellers and overnight stays by countries of residence

Countries	Travellers		Overnight stays	
	Total	%	Total	%
TOTAL	84,681	100.00	819,367	100.00
Residents in Spain	48,891	57.74	159,342	19.45
Residents abroad	35,790	42.26	660,025	80.55
TOTAL residents abroad	35,790	100.00	660,025	100.00
TOTAL residents in E.U. (excluding Spain)	33,885	94.68	638,891	96.80
- Germany	7,467	20.86	187,936	28.47
- Austria	349	0.98	5,527	0.84
- Belgium	1,543	4.31	27,366	4.15
- Denmark	599	1.68	10,653	1.61
- Finland	457	1.28	7,973	1.21
- France	5,029	14.05	40,376	6.12
- Greece	156	0.44	239	0.04
- Ireland	268	0.75	3,602	0.55
- Italy	751	2.10	4,331	0.66
- Luxembourg	44	0.12	1,461	0.22
- Netherlands	5,200	14.53	90,434	13.70
- Poland	97	0.27	415	0.06
- Portugal	335	0.93	1,594	0.24
- United Kingdom	10,361	28.95	235,189	35.63
- Czech Republic	80	0.22	278	0.04
- Sweden	943	2.63	20,344	3.08
- Other EU countries	205	0.57	1,174	0.18
Other European countries	1,438	4.02	18,543	2.81
United States of America	75	0.21	120	0.02
Rest of America	148	0.41	785	0.12
African countries	-	-	22	0.00
Other countries	245	0.68	1,664	0.25

Tourist accommodation occupancy survey: (Rural tourist accommodation)

January 2013

Provisional data

1. Number of travellers, overnight stays and average stay by Autonomous Cities and Communities

Autonomous Communities	Number of travellers			Number of overnight stays			Average stay
	Total	Residents In Spain	Residents abroad	Total	Residents In Spain	Residents abroad	
TOTAL	84,801	76,052	8,750	213,171	165,211	47,960	2.51
Andalucía	6,529	5,888	642	22,354	14,292	8,063	3.42
Aragón	4,913	4,736	176	13,065	12,435	631	2.66
Asturias, Principado de	4,303	4,239	64	10,197	10,054	143	2.37
Balears, Illes	1,251	466	785	5,458	841	4,618	4.36
Canarias	5,919	1,150	4,769	31,346	4,258	27,088	5.30
Cantabria	4,369	4,177	192	7,100	6,740	360	1.63
Castilla y León	18,620	18,136	484	40,040	39,181	859	2.15
Castilla-La Mancha	5,876	5,698	178	12,962	12,073	889	2.21
Cataluña	8,477	8,000	477	18,942	17,802	1,140	2.23
Comunitat Valenciana	3,253	3,069	184	8,676	7,240	1,436	2.67
Extremadura	3,773	3,544	229	7,475	6,962	513	1.98
Galicia	2,342	2,304	38	3,619	3,488	131	1.55
Madrid, Comunidad de	6,942	6,740	201	11,349	10,494	855	1.63
Murcia, Región de	1,392	1,315	77	2,851	2,646	204	2.05
Navarra, Comunidad Foral de	2,623	2,605	17	7,271	7,150	121	2.77
País Vasco	3,239	3,008	231	7,954	7,051	903	2.46
Rioja, La	981	975	5	2,511	2,506	5	2.56
Ceuta	-	-	-	-	-	-	-
Melilla	-	-	-	-	-	-	-
Interannual rate	-15.23	-18.00	19.98	-17.65	-21.61	-0.31	-2.86
Cumulative interannual rate	-15.23	-18.00	19.98	-17.65	-21.61	-0.31	-2.86

2. Open rural tourist accommodation and estimated vacancies, levels of occupancy and personnel employed by Autonomous Cities and Communities

Autonomous Communities	Nº of rural open estimated accom.	Nº of vacancies	Level of occupancy			Employed personnel
			By vacancies	By vacancies at week end	By rooms	
TOTAL	13,693	121,998	5.63	11.86	6.70	19,403
Andalucía	1,296	10,882	6.63	11.96	11.08	1,815
Aragón	1,050	8,189	5.14	10.39	6.45	1,218
Asturias, Principado de	1,094	9,901	3.32	7.31	4.33	1,460
Balears, Illes	74	1,195	14.71	15.74	19.52	203
Canarias	646	3,932	25.69	26.43	30.80	971
Cantabria	228	3,626	6.31	13.36	6.20	354
Castilla y León	3,152	26,738	4.81	12.79	5.00	4,520
Castilla-La Mancha	1,398	11,498	3.64	10.56	4.14	1,941
Cataluña	1,472	11,814	5.17	14.75	5.54	2,113
Comunitat Valenciana	943	8,456	3.31	6.79	4.30	1,325
Extremadura	474	5,564	4.33	7.50	5.58	717
Galicia	424	5,155	2.26	5.35	2.29	677
Madrid, Comunidad de	247	4,252	8.60	20.65	9.95	579
Murcia, Región de	112	1,684	5.46	16.33	5.92	152
Navarra, Comunidad Foral de	647	4,663	5.03	10.60	5.96	805
País Vasco	345	3,595	7.13	10.34	8.62	448
Rioja, La	90	853	9.49	25.78	9.63	104
Ceuta	-	-	-	-	-	-
Melilla	-	-	-	-	-	-
Interannual rate	-2.72	-3.40	-14.68	-0.15	-17.81	0.01
Cumulative interannual rate	-2.72	-3.40	-14.68	-0.15	-17.81	0.01

3. Number of travellers, overnight stays and average stay of provinces with the greatest number of overnight stays¹

Provinces	Number of travellers			Number of overnight stays			Average stay
	Total	Residents In Spain	Residents abroad	Total	Residents In Spain	Residents abroad	
Santa Cruz de Tenerife	4,184	830	3,353	23,669	3,176	20,493	5.66
Ávila	4,405	4,214	191	11,581	11,198	383	2.63
Málaga	1,411	968	443	10,567	3,353	7,214	7.49
Girona	3,565	3,315	250	7,868	7,346	523	2.21
Palmas, Las	1,736	320	1,416	7,677	1,082	6,595	4.42
Huesca	2,376	2,212	163	7,399	6,795	604	3.11
Salamanca	2,748	2,688	60	5,920	5,842	78	2.15
Cáceres	3,101	2,911	190	5,700	5,248	452	1.84
Lleida	1,955	1,867	88	5,612	5,402	210	2.87
Segovia	3,231	3,208	23	5,530	5,496	34	1.71
Cuenca	1,933	1,882	51	5,179	4,444	735	2.68
León	2,095	2,072	23	4,468	4,443	25	2.13
Barcelona	2,214	2,164	49	4,038	3,822	216	1.82
Teruel	1,702	1,696	6	4,030	4,023	6	2.37
Gipuzkoa	1,748	1,591	158	3,770	3,245	526	2.16

4. Open rural tourist accommodation and estimated vacancies degrees of occupancy and personnel employed in provinces with the highest number of overnight stays¹

Provinces	Nº of rural open estimated accommodation	Nº of vacancies	Level of occupancy			Employed personnel
			By vacancies	By vacancies at the weekend	By rooms	
Santa Cruz de Tenerife	527	2,989	25.54	26.93	29.91	785
Ávila	782	5,575	6.70	20.17	6.90	1,206
Málaga	488	3,295	10.35	14.72	21.88	597
Girona	482	3,819	6.64	21.46	6.90	693
Palmas, Las	118	943	26.16	24.85	33.77	185
Huesca	539	4,089	5.83	10.61	7.84	636
Salamanca	473	3,733	5.02	11.03	4.59	669
Cáceres	410	4,831	3.81	7.48	5.21	616
Lleida	413	3,087	5.86	12.76	6.08	576
Segovia	356	3,208	5.56	16.32	5.89	521
Cuenca	304	3,201	5.22	16.65	6.09	444
León	396	3,341	4.31	10.75	4.03	595
Barcelona	402	3,405	3.82	12.72	4.42	625
Teruel	332	2,591	5.01	11.89	5.61	375
Gipuzkoa	163	1,767	6.88	9.11	8.31	217

¹ Provinces belonging to uniprovincial Autonomous Communities have not been included because they are reflected in previous tables.

5. Number of travellers, overnight stays, average stay, estimated vacancies, levels of occupancy and personnel employed in areas with the highest number of overnight stays

Areas	Number of travellers		Number of overnight stays		Average stay	Capacity		Level of occupancy		
	Residents In Spain	Residents abroad	Residents In Spain	Residents abroad		Nº of rural open esti-mated accom.	Nº of vacancies	By vacancies	By vacancies at week end	By rooms
	Isla de Tenerife	583	2,040	1,684		11,120	4.88	120	1,208	34.19
P.Nacional Teide	349	1,653	1,149	9,756	5.45	79	874	40.21	41.03	41.92
Pirineus	3,651	73	8,330	143	2.27	580	4,268	6.40	20.64	5.64
Isla de La Palma	148	819	1,240	7,014	8.53	285	1,197	22.24	24.21	27.78
Pirineo Navarro	2,696	18	7,421	128	2.78	585	4,235	5.75	12.11	6.83
Pirineo Aragónés	2,119	169	5,882	617	2.84	488	3,774	5.55	11.32	7.20
Isla de Mallorca	338	718	586	4,491	4.81	65	1,008	16.21	16.55	21.61
Isla Gran Canaria	199	890	628	4,304	4.53	93	606	26.11	24.87	36.02
P.Nacional Taburiente	112	358	1,012	3,780	10.20	164	710	21.77	20.57	28.79
Costa Brava	1,387	231	2,809	489	2.04	304	2,539	4.19	12.66	5.23
P.Natural Sierras de Tejeda, Almirante y Alhama	62	36	472	1,879	24.00	92	552	13.74	14.11	36.32
Isla de Lanzarote	87	446	370	1,904	4.26	17	269	27.30	26.22	30.98
Costa Verde	361	12	2,163	37	5.89	337	3,371	2.11	3.72	4.55
Isla de La Gomera	78	438	189	1,928	4.10	74	392	17.43	19.00	28.31
P.Nacional Garajonay	78	438	189	1,928	4.10	74	392	17.43	19.00	28.31

6. Number of travellers, overnight stays, average stay, estimated vacancies, levels of occupancy and personnel employed class per rural house per Autonomous Cities and Communities²

Autonomous Communities	Number of travellers		Number of overnight stays		Average stay	Capacity		Level of occupancy		Employed personnel
	Residents In Spain	Residents abroad	Residents In Spain	Residents abroad		Nº of rural open esti-mated accom.	Nº of vacancies	By vacancies	By vacancies at week end	
	TOTAL	46,908	4,878	112,561		31,244	2.78	11,387	85,919	
Andalucía	5,281	579	12,973	7,848	3.55	1,262	10,054	6.68	12.01	1,720
Aragón	3,449	170	8,324	510	2.44	767	5,938	4.80	9.99	883
Asturias, Principado de	1,309	-	5,027	-	3.84	702	4,081	3.97	8.33	883
Balears, Illes	267	326	497	1,660	3.64	21	280	24.75	25.36	48
Canarias	558	2,363	2,637	16,330	6.49	615	3,072	19.89	21.41	819
Cantabria	1,818	100	2,715	172	1.51	90	1,238	7.52	17.22	120
Castilla y León	10,579	289	26,407	611	2.49	2,719	18,168	4.77	13.63	3,584
Castilla-La Mancha	5,207	175	11,188	883	2.24	1,364	10,914	3.57	10.51	1,880
Cataluña	6,730	409	15,219	954	2.27	1,236	9,425	5.53	15.61	1,774
Comunitat Valenciana	2,439	173	6,394	1,395	2.98	914	6,938	3.62	7.13	1,232
Extremadura	1,555	95	2,921	205	1.89	299	2,853	3.53	5.92	439
Galicia	1,387	28	2,226	118	1.66	305	3,550	2.13	5.23	454
Madrid, Comunidad de	424	37	942	37	2.12	66	602	5.25	16.85	84
Murcia, Región de	975	32	2,082	126	2.19	105	1,463	4.87	16.47	122
Navarra, Comunidad Foral de	2,605	17	7,150	121	2.77	647	4,663	5.03	10.60	805
País Vasco	1,350	80	3,355	268	2.53	186	1,825	6.40	10.70	250
Rioja, La	975	5	2,506	5	2.56	90	853	9.49	25.78	104
Ceuta	-	-	-	-	-	-	-	-	-	-
Melilla	-	-	-	-	-	-	-	-	-	-

² To facilitate the comparability between data from different Autonomous Communities (and because of the different regulation and different characteristics), a group called rural house has been created, with those accommodations with similar typology (location, capacity, etc...).

The variables included in the previous table have been estimated with that type of establishments.

The variables shown in the table have been estimated with the type of accommodation under rural tourist accommodation.

7. Travellers and overnight stays by country of residence

Results by countries	Travellers		Overnight stays	
	Total	%	Total	%
TOTAL	84,801	100.00	213,171	100.00
Residents Spain	76,052	89.68	165,211	77.50
Residents abroad	8,750	10.32	47,960	22.50
Total Residents abroad	8,750	100.00	47,960	100.00
Total Residents in UE (excluding Spain)	7,397	84.54	44,118	91.99
- Germany	2,895	33.09	22,802	47.54
- Belgium	261	2.98	923	1.92
- France	877	10.03	2,865	5.97
- Italy	363	4.15	1,405	2.93
- Netherlands	886	10.13	4,892	10.20
- Portugal	114	1.30	220	0.46
- United Kingdom	1,367	15.63	7,292	15.21
Sweden	477	5.46	1,559	3.25
Other European countries	968	11.06	4,663	9.72
United States of America	160	1.83	516	1.07
Other countries	380	4.34	824	1.72

HOLIDAY DWELLING PRICE INDEX (HDPI)

January 2013

Provisional data

National general index and breakdown by rates

	Index	Interannual variation rate
TOTAL	105.34	-0.02
Normal	106.36	0.26
Weekend	109.74	-0.52
Tour-operators and travel agencies	105.23	-0.14

National general index and breakdown by modalities

	Index	Interannual variation rate
TOTAL	105.34	-0.02
Studio	104.06	-2.57
Dwellings 2/4 bedplaces	104.18	0.37
Dwellings 4/6 bedplaces	113.83	0.93

Tourist Campsite Price Index (TCSPI). 2002 Base

January 2013

Provisional data

National general index and breakdown by rates

	Index	Interannual variation rate
TOTAL	141.77	1.78
Normal rate	137.63	0.25
Special rate for stays up to one month	129.80	3.75
Special rate for stays longer than one month	144.15	3.01

National general index and breakdown by categories

	Index	Interannual variation rate
TOTAL	141.77	1.78
Luxury and first	151.92	2.18
Second	136.20	1.39
Third	139.03	3.52

Rural Tourism Accommodation Price Index (RTAPI)

January 2013

Provisional data

General Autonomous Cities and Communities and national indices

	Index	Variation Rate interannual
TOTAL	130.51	-1.17
Andalucía	136.45	-1.40
Aragón	153.80	-0.98
Asturias, Principado de	137.63	-1.27
Balears, Illes	97.87	-2.89
Canarias	107.45	-1.35
Cantabria	164.77	6.08
Castilla y León	132.85	-1.08
Castilla - La Mancha	118.63	-6.19
Cataluña	133.01	-0.48
Comunitat Valenciana	128.06	-1.47
Extremadura	100.07	-7.02
Galicia	130.09	-4.04
Madrid, Comunidad de	124.18	-1.89
Murcia, Región de	152.96	9.20
Navarra, Comunidad Foral de	186.93	2.36
País Vasco	149.35	0.86
Rioja, La	152.24	-0.45
Ceuta	-	-
Melilla	-	-

National general index and breakdown by rates

	Index	Variation Rate interannual
TOTAL	130.51	-1.17
Normal	130.84	-1.96
Weekend	132.21	-0.73

National general index and breakdown by rent modality

	Index	Variation Rate interannual
TOTAL	130.51	-1.17
Shared use (in case of per room rent modality)	114.86	-2.24
Full use (rent of entire dwelling)	137.94	-0.67