

27 February 2015

Non-Hotel Tourist Accommodation Occupancy Survey
January 2015. *Provisional data*

**Overnight stays in non-hotel tourist accommodation increase 0.5%
in January as compared to the same month of 2014**

Overnight stays in non-hotel tourist accommodation (holiday dwellings, campsites and rural tourism accommodation) exceeded 4.9 million in January, that is, 0.5% more than in the same month of 2014. Overnight stays of resident travellers increased by 17.9% while those of non-residents decreased by 2.8%. The average stay stood at 7.3 overnight stays per traveller.

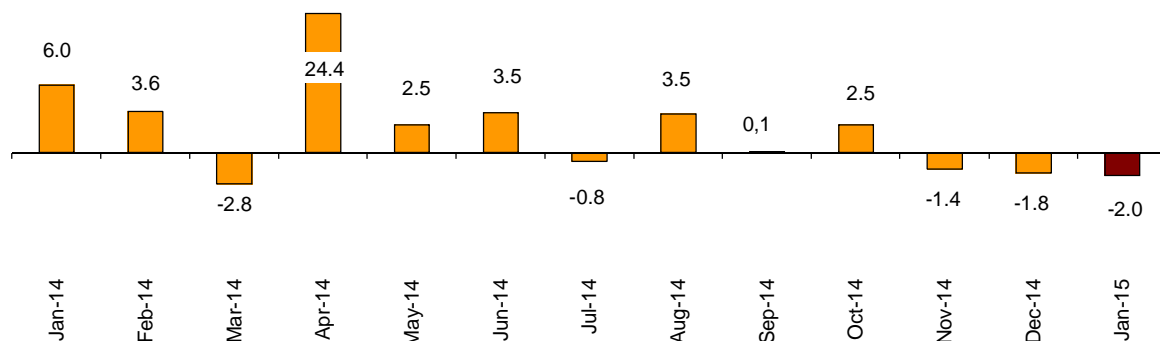
Travellers and overnight stays in collective non-hotel tourist accommodation during the month of January were:

January 2015	Travellers	Overnight stays
Residents in Spain	281,498	923,253
EU (not including Spain)	331,965	3,458,552
Rest of the world	66,834	578,364
TOTAL	680,297	4,960,169

Holiday Dwellings

Overnight stays in holiday dwellings decreased 2.0% in January. Those of residents increased by 12.4% and those of non-residents decreased by 3.9%. The average stay decreased by 7.7%, standing at 8.1 overnight stays per traveller.

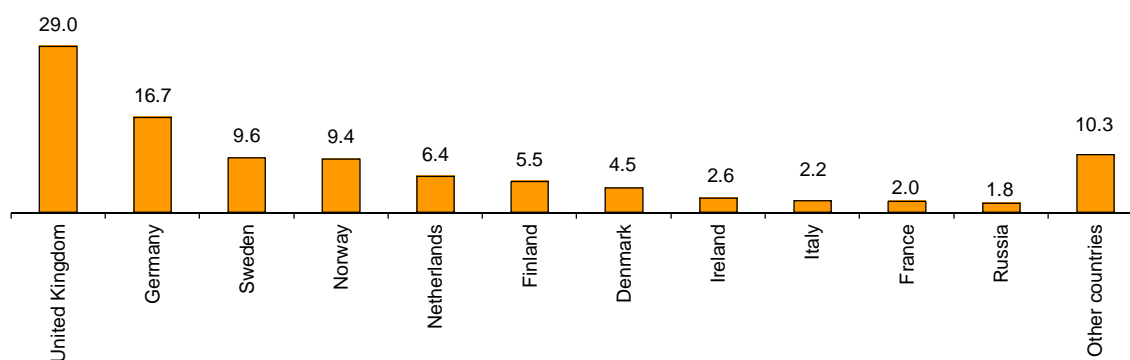
Overnight stays annual growth rate in holiday dwellings in %



In January, 34.3% of the bedplaces available for holiday dwellings were occupied, 1.8% less than in the same month of 2014. The weekend occupancy rate by bedplaces stood at 36.4%, with an increase of 0.4%.

Non-resident overnight stays in holiday dwellings represented 86.4% of the total. The United Kingdom was the main country of origin, with 938,704 million overnight stays, that is, 0.8% less than in January 2014. The following country of origin was Germany, with 539,101 overnight stays, that is, a 9.7% decrease.

Distribution of overnight stays of residents abroad of the 11 main countries by origin



Canarias was the preferred holiday dwelling destination, with more than 2.7 million overnight stays, 7.4% less than in January 2014. This Autonomous Community also registered the highest occupancy rate, with 82.5% of the dwellings offered.

By tourist areas, Tenerife island was the preferred destination, with 908,302 overnight stays. Gran Canaria island registered the highest occupancy rate, with 80.6% of the dwellings offered.

The tourist sites with the greatest number of overnight stays in January were San Bartolomé de Tirajana, Arona and Tías.

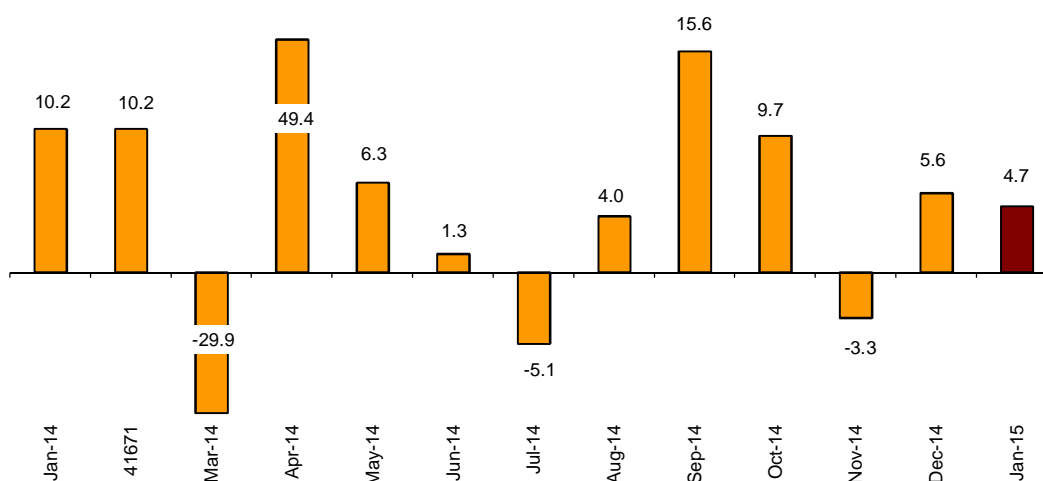
Campsites

Overnight stays in tourist campsites registered an annual increase of 4.7% in January. Overnight stays of resident travellers increased by 20.2% and those of non-resident travellers did so by 1.3%.

In January, 35.3% of the offered pitches were occupied, that is, 0.2% more. The weekend occupancy rate by pitch reached 36.7%, with a 0.5% annual decrease.

79.8% of the overnight stays in tourist campsites were by non-residents. The United Kingdom was the main country of origin, with 35.1% of the overnight stays by non-residents, 0.1% less than in January 2014.

Overnight stays annual growth rate in campsites in %



Comunitat Valenciana was the preferred destination regarding campsites, with 497,819 overnight stays, 5.0% more than in the same month of the previous year.

La Rioja was the Autonomous Community with the highest occupancy rate on campsites, with 64.2% of the pitches offered.

By tourist areas, Costa Blanca was the preferred destination for camping, with 279,389 overnight stays and 76.9% of the pitches offered.

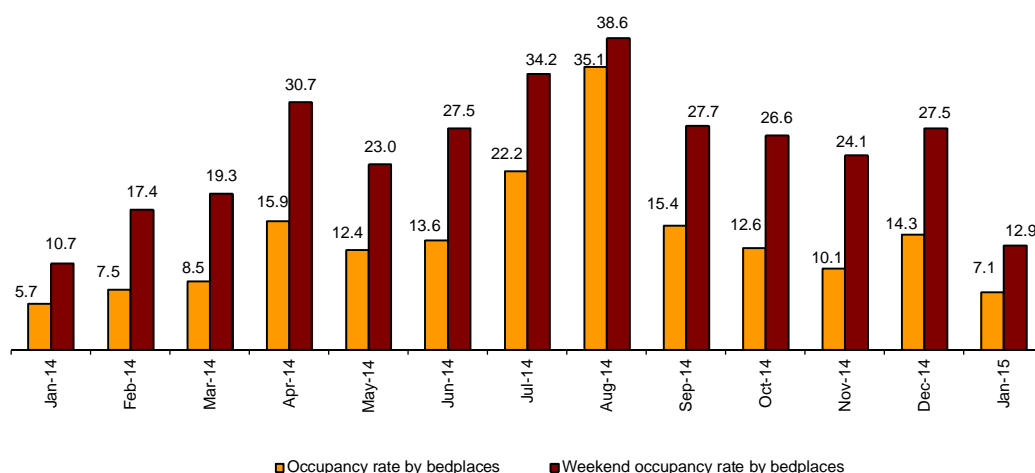
The tourist sites with the highest number of overnight stays were Benidorm, Cartagena and Marbella.

Rural Tourism Accommodation

Overnight stays in rural tourism accommodation presented an annual increase of 25.0% in January. Residents' overnight stays increased by 30.3% while those of non-residents did so by 7.2%.

Regarding rural tourism accommodation, 7.1% of the bedplaces were occupied, that is, a 24.5% increase as compared to January 2014. The weekend occupancy rate stood at 12.9%, with a 21.1% increase.

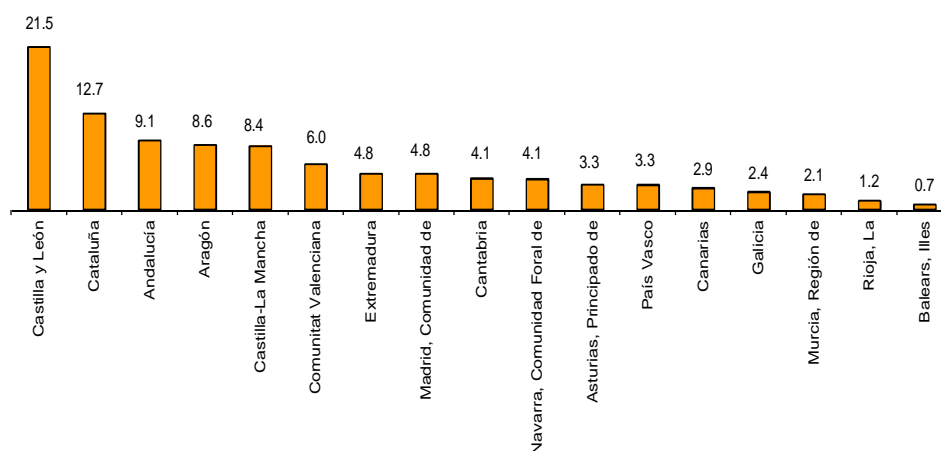
Occupancy rate by bedplaces and bedplaces on weekends



By Autonomous Community, Castilla y León was the preferred destination, with 50,016 overnight stays, 19.8% more than in January 2014. Canarias reached the highest occupancy rate, with 31.8% of the bedplaces offered.

By tourist area, Pirineus was the main destination, with 16,374 overnight stays. Lanzarote island reached the greatest occupancy rate, with 40.7% of the bedplaces offered.

Distribution of overnight stays of traveller residents by autonomous community of destination in %



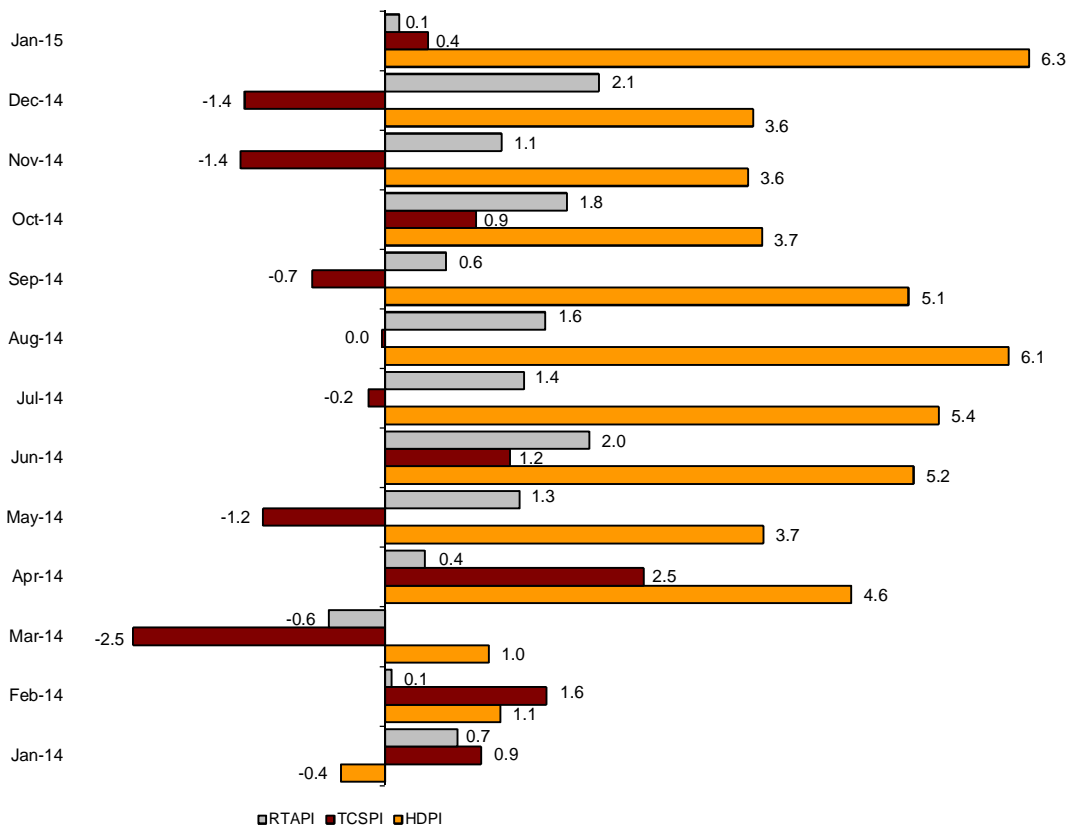
Price Indices

The Holiday Dwelling Price Index (HDPI) increased 6.3%, as compared to January 2014. The *tour operators and travel agencies* rate, which carried the greatest weight in the weighting structure for this month (62.8%), increased by 7.4%.

The Tourist Campsite Price Index (TCPI) increased by 0.4% in the annual rate. The *normal* rate, which had the greatest weight in the weighting structure for January (46.0%), increased by 0.3%.

The Rural Tourism Accommodation Price Index (RTAPI) registered a 0.1% increase in January. The *weekend* rate, which accounted for 62.1% of the total weight, did not vary when compared to the same month in 2014.

Price Indices. Annual variation rates



Evolution of travellers and overnight stays in all Spanish collective tourist accommodation

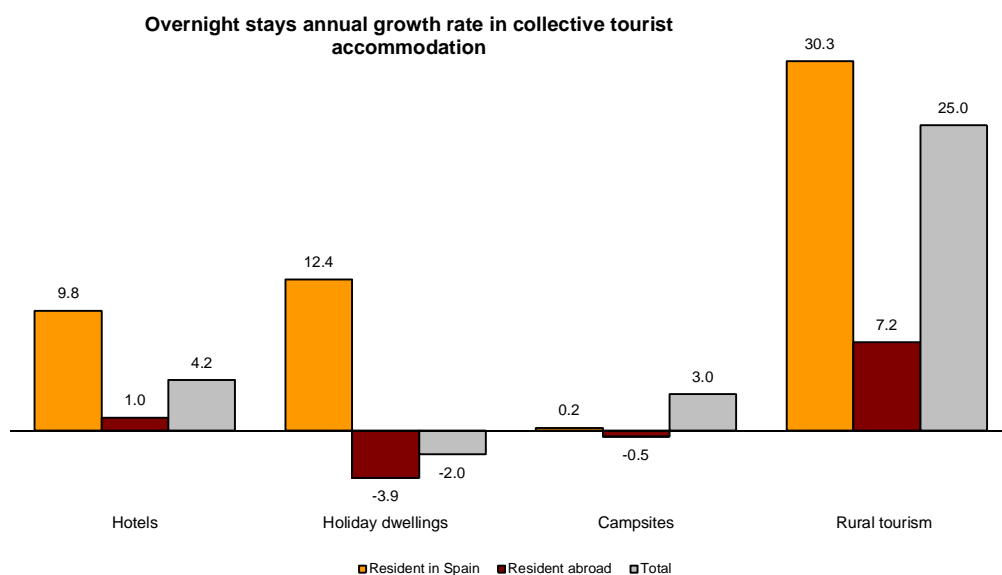
In January, overnight stays in Spanish collective tourist accommodation (hotels¹, holiday dwellings, campsites and rural tourism accommodation) registered a 3.1% increase in its annual rate. Overnight stays of residents increased by 11.0%, while those of non-residents decreased by 0.3%.

The average stay decreased 4.3% as compared to the same month of the previous year, standing at 3.7 overnight stays per traveller.

Travellers and overnight stays in collective tourist accommodation were:

January 2015	Holiday dwellings	Campsites	Rural T.	Non-hotel	Hotels	Total
Travellers	464,014	108,669	107,614	680,297	4,236,617	4,916,914
Residents	122,139	62,457	96,902	281,498	2,391,563	2,673,061
Non-residents	341,874	46,213	10,712	398,799	1,845,053	2,243,852
Overnight stays	3,742,037	938,523	279,609	4,960,169	13,338,952	18,299,121
Residents	508,787	189,564	224,902	923,253	4,993,350	5,916,603
Non-residents	3,233,250	748,959	54,707	4,036,916	8,345,601	12,382,517

Of the total overnight stays in collective tourist accommodation, 73% accounted for hotels, and 27% did so for non-hotel tourist accommodation.



The main countries of origin in overall regulated tourist accommodation were the United Kingdom (with 24.2% of the total number of non-resident overnight stays), Germany (21.7%) and France (5.3%).

Canarias was the preferred destination, with more than eight million overnight stays (4.3% below that registered in January 2014), followed by Andalucía, with over 2.3 million overnight stays (9.5% more), and Cataluña, with over 1.9 million (10.9% more).

¹ The press release corresponding to Hotel Tourism Short-Term Trends was published on 23 February.

Tourist Accommodation Occupancy Survey (Holiday Dwellings)

January 2015 Provisional data

1. Travellers, overnight stays and average stay by Autonomous Cities and Communities

Autonomous Cities and Communities	Travellers			Overnight stays			Average stay
	Total	Residents in Spain	Residents abroad	Total	Residents in Spain	Residents abroad	
TOTAL	464,014	122,139	341,874	3,742,037	508,787	3,233,250	8.06
Andalucía	73,442	32,486	40,956	341,248	88,770	252,478	4.65
Aragón	9,222	8,810	412	31,229	28,247	2,982	3.39
Asturias, Principado de	151	151	-	1,262	1,262	-	8.37
Balears, Illes	4,938	1,881	3,057	31,375	6,897	24,478	6.35
Canarias	273,171	18,061	255,110	2,701,819	117,898	2,583,921	9.89
Cantabria	2,631	2,273	358	10,484	8,382	2,102	3.98
Castilla y León	3,701	3,540	161	11,814	10,801	1,013	3.19
Castilla - La Mancha	3,277	2,936	341	9,788	7,828	1,961	2.99
Cataluña	24,555	12,602	11,953	136,712	76,345	60,367	5.57
Comunitat Valenciana	31,665	12,472	19,193	302,279	65,173	237,106	9.55
Extremadura	2,986	2,734	252	5,232	4,895	337	1.75
Galicia	2,484	2,283	201	7,946	7,343	603	3.20
Madrid, Comunidad de	21,931	14,032	7,900	101,331	53,958	47,373	4.62
Murcia, Región de	4,144	2,907	1,237	28,527	15,084	13,443	6.88
Navarra, Comunidad Foral de	1,277	1,065	212	6,229	4,636	1,593	4.88
País Vasco	1,946	1,443	502	9,459	6,013	3,446	4.86
Rioja, La	2,493	2,464	29	5,303	5,256	47	2.13
Ceuta	-	-	-	-	-	-	-
Melilla	-	-	-	-	-	-	-
Annual rate	6.21	22.68	1.35	-1.98	12.41	-3.91	-7.71
Cumulative annual rate	6.21	22.68	1.35	-1.98	12.41	-3.91	-7.71

2. Capacity, occupancy and number of staff by Autonomous Cities and Communities

Autonomous Cities and Communities	Capacity		Level of occupancy				Employed personnel
	Estimated bedplaces	Estimated Holiday dwelling	Per bedplaces	Per bedplaces at weekend	Per Holiday dwelling	Per Holiday dwelling at weekend	
TOTAL	350,923	95,588	34.31	36.36	57.20	59.12	19,604
Andalucía	54,902	13,861	19.99	24.12	33.01	37.59	3,110
Aragón	6,710	1,569	15.27	24.54	21.73	31.35	478
Asturias, Principado de	2,555	696	1.59	1.68	3.73	3.92	170
Balears, Illes	3,854	1,111	26.25	30.19	46.08	49.38	324
Canarias	155,522	48,461	55.77	56.39	82.52	82.76	10,251
Cantabria	2,735	747	12.37	17.67	20.76	25.89	163
Castilla y León	4,625	996	8.13	13.42	18.82	25.42	393
Castilla - La Mancha	4,324	1,054	7.30	11.92	11.74	17.52	392
Cataluña	22,124	5,425	20.01	24.51	30.81	35.64	911
Comunitat Valenciana	68,477	14,437	14.24	15.18	29.51	30.90	1,983
Extremadura	1,382	300	12.19	21.69	19.33	30.93	147
Galicia	3,085	847	8.29	10.61	16.88	18.93	189
Madrid, Comunidad de	7,557	3,075	42.97	48.67	58.39	62.53	437
Murcia, Región de	8,039	1,874	11.44	12.29	23.99	25.14	219
Navarra, Comunidad Foral de	1,594	297	12.60	16.40	25.72	28.84	233
País Vasco	2,266	554	13.43	14.79	34.03	34.74	96
Rioja, La	1,173	282	14.54	30.61	19.86	40.52	109
Ceuta	-	-	-	-	-	-	-
Melilla	-	-	-	-	-	-	-
Annual rate	0.00	-1.23	-1.83	0.42	-1.15	0.01	4.92
Cumulative annual rate	0.00	-1.23	-1.83	0.42	-1.15	0.01	4.92

3. Travellers, overnight stays, capacity, occupancy, total number of staff with greater number of overnight stays *

Provinces	Travellers		Overnight stays			Capacity		Level of occupancy			Employed personnel
	Residents in Spain	Residents abroad	Residents in Spain	Residents abroad	Average stay	Estimated bed-places	Estimated holiday dwelling	Per bed-places	Per Holiday dwelling	Per Holiday dwelling at weekend	
Palmas, Las	10,761	160,257	71,649	1,639,350	10.00	100,819	31,374	54.48	82.54	82.94	6,302
Santa Cruz de Tenerife	7,300	94,853	46,249	944,570	9.70	54,703	17,087	58.14	82.47	82.45	3,949
Alicante/Alacant	7,189	15,453	37,983	211,994	11.04	50,945	10,932	15.83	32.41	33.35	1,525
Málaga	11,598	27,741	35,336	198,243	5.94	33,939	8,383	22.18	37.98	41.00	1,969
Barcelona	5,838	10,683	52,599	52,628	6.37	9,690	2,792	35.11	47.19	51.01	466
Sevilla	6,816	6,316	19,502	20,291	3.03	4,310	1,331	29.50	43.92	53.86	303
Granada	7,345	4,697	17,836	20,015	3.14	4,829	1,276	25.10	32.25	43.06	387
Valencia/València	3,949	3,382	15,583	19,459	4.78	8,706	1,842	12.98	28.39	31.28	327
Girona	3,200	1,149	12,015	6,858	4.34	7,526	1,613	8.07	13.41	18.41	286
Huesca	5,272	26	18,047	269	3.46	3,871	867	15.73	20.00	32.57	278
Castellón/Castelló	1,335	358	11,606	5,653	10.19	8,825	1,664	6.31	11.75	14.35	131
Almería	734	681	3,352	8,992	8.73	4,535	1,044	8.75	16.63	17.62	82
Cádiz	2,682	1,219	4,854	4,110	2.30	2,746	736	10.45	15.97	19.37	168
Lleida	3,171	97	7,810	458	2.53	2,499	531	10.67	15.19	25.87	91
Teruel	2,427	103	5,918	1,240	2.83	1,865	435	12.36	19.04	25.18	124

4. Travellers, overnight stays, capacity, occupancy, total number of staff from tourist areas with greater number of overnight stays

Tourist Areas	Travellers		Overnight stays			Capacity		Level of occupancy			Employed personnel
	Residents in Spain	Residents abroad	Residents in Spain	Residents abroad	Average stay	Estimated bed-places	Estimated holiday dwelling	Per bed-places	Per Holiday dwelling	Per Holiday dwelling at weekend	
Isla de Tenerife	5,297	87,490	35,658	872,644	9.79	48,493	14,913	60.09	85.45	85.50	3,420
Isla de Gran Canaria	3,087	77,100	19,549	859,193	10.96	47,749	15,499	59.23	86.29	86.53	2,897
Isla de Lanzarote	5,322	60,826	37,127	555,804	8.96	35,826	10,584	53.07	81.83	82.19	2,487
Costa Blanca	6,975	15,403	37,138	211,165	11.10	49,739	10,674	16.10	32.91	33.85	1,469
Isla de Fuerteventura	2,352	22,330	14,973	224,354	9.70	17,245	5,291	44.29	72.98	73.90	918
Costa del Sol	9,365	27,687	30,694	197,987	6.17	32,650	8,156	22.58	38.62	41.59	1,918
Costa Barcelona	910	455	36,127	20,370	31.00	4,472	1,491	40.75	45.84	46.36	114
Barcelona	4,554	10,170	14,950	32,023	3.19	4,564	1,112	33.02	54.44	61.91	319
Isla de La Gomera	655	4,031	3,527	37,531	8.76	3,094	1,060	42.79	62.86	62.89	242
Isla de La Palma	1,232	3,251	6,310	34,059	9.00	2,699	994	48.23	66.78	65.66	263

5. Travellers, overnight stays, capacity, occupancy, total number of staff from tourist sites with greater number of overnights stays

Tourist sites	Travellers		Overnight stays			Capacity		Level of occupancy			Employed personnel
	Residents in Spain	Residents abroad	Residents in Spain	Residents abroad	Average stay	Estimated bed-places	Estimated holiday dwelling	Per bed-places	Per Holiday dwelling	Per Holiday dwelling at weekend	
San Bartolomé de Tirajana	2,119	42,841	12,636	520,199	11.85	30,587	9,829	56.04	85.88	86.14	1,777
Arona	1,056	36,592	10,407	390,653	10.65	19,977	6,219	64.59	87.10	86.71	1,455
Tías	3,208	34,114	20,913	313,677	8.97	19,553	6,074	54.71	81.54	81.92	1,170
Mogán	638	32,258	3,607	319,975	9.84	16,240	5,273	64.16	87.14	87.42	1,033
Adeje	1,518	28,385	10,472	264,727	9.20	15,463	4,287	56.80	87.58	87.77	930
Teguise	1,912	13,573	14,884	126,369	9.12	8,560	2,600	53.00	82.90	82.31	614
Benidorm	2,433	8,125	13,098	121,939	12.79	18,946	4,477	22.99	45.56	46.83	777
Puerto de la Cruz	2,067	8,879	11,919	104,889	10.67	6,039	2,521	62.35	81.38	81.48	488
Madrid	13,741	7,851	49,552	45,978	4.42	6,950	2,829	44.02	59.12	63.70	391
Oliva (Ia)	1,703	8,179	12,086	76,612	8.98	6,420	1,875	44.22	74.04	75.72	339

* Provinces belonging to uniprovincial Autonomous Communities have not been included because they are reflected in previous tables.

6. Travellers and overnight stays by countries of residence

Countries	Travellers		Overnight stays	
	Total	%	Total	%
TOTAL	464,014	100.00	3,742,037	100.00
Residents in Spain	122,139	26.32	508,787	13.60
Residents abroad	341,874	73.68	3,233,250	86.40
Total residents abroad	341,874	100.00	3,233,250	100.00
Total residents in E.U (excluding Spain)	279,276	81.69	2,683,116	82.99
- Germany	40,831	11.94	539,101	16.67
- Austria	2,107	0.62	22,755	0.70
- Belgium	4,454	1.30	40,290	1.25
-Denmark	16,837	4.92	144,037	4.45
- Finland	19,061	5.58	178,675	5.53
- France	11,132	3.26	65,546	2.03
- Greece	166	0.05	1,033	0.03
- Ireland	10,709	3.13	84,373	2.61
- Italy	10,574	3.09	71,741	2.22
- Luxembourg	431	0.13	4,692	0.15
- Netherlands	18,550	5.43	207,196	6.41
- Poland	3,681	1.08	23,279	0.72
- Portugal	1,786	0.52	8,553	0.26
- United Kingdom	99,704	29.16	938,704	29.03
- Czech Republic	663	0.19	5,632	0.17
- Sweden	33,539	9.81	310,510	9.60
- Other EU countries	5,050	1.48	37,000	1.14
Norway	26,606	7.78	305,256	9.44
Russia	6,612	1.93	56,701	1.75
Switzerland	2,930	0.86	28,282	0.87
Other european countries	3,609	1.06	29,847	0.92
United States of America	4,566	1.34	25,864	0.80
Rest of America	6,035	1.77	41,450	1.28
African countries	3,497	1.02	15,293	0.47
Other countries	8,744	2.56	47,440	1.47

**Tourist Accommodation Occupancy Survey
Campsite Occupancy Survey (COS)
January 2015**

Provisional data

1. Travellers, overnight stays and average stay by category of establishment

Category	Travellers			Overnight stays			Average stay
	Total	Residents in Spain	Residents abroad	Total	Residents in Spain	Residents abroad	
TOTAL	108,669	62,457	46,213	938,523	189,564	748,959	8.64
Luxury and first-class	46,196	23,229	22,967	409,789	77,463	332,327	8.87
Second-class	54,940	32,947	21,993	509,405	99,995	409,410	9.27
Third-class	7,533	6,280	1,253	19,329	12,106	7,223	2.57
Annual rate	13.65	20.81	5.22	4.66	20.21	1.34	-7.91
Cumulative annual rate	13.65	20.81	5.22	4.66	20.21	1.34	-7.91

2. Open establishments, capacity, occupancy and number of staff by category of establishments

Category	Estimated open establishments	Capacity		Occupied pitches	Occupancy rate per pitch	Weekend occupancy rate	Employed personnel
		Estimated bedplaces	Estimated pitches				
TOTAL	431	260,469	82,463	901,704	35.27	36.73	2,684
Luxury and first-class	118	108,053	33,405	362,301	34.99	36.23	1,250
Second-class	249	134,531	43,176	494,033	36.91	37.53	1,252
Third-class	65	17,885	5,881	45,370	24.88	34.10	181
Annual rate	2.32	2.17	2.74	2.98	0.23	-0.52	3.73
Cumulative annual rate	2.32	2.17	2.74	2.98	0.23	-0.52	3.73

3. Travellers, overnight stays and average stay by Autonomous Cities and Communities

Autonomous cities and communities	Travellers			Overnight stays			Average stay
	Total	Residents in Spain	Residents abroad	Total	Residents in Spain	Residents abroad	
TOTAL	108,669	62,457	46,213	938,523	189,564	748,959	8.64
Andalucía	23,216	9,328	13,888	188,564	33,895	154,669	8.12
Aragón	5,311	4,698	613	13,400	12,468	932	2.52
Asturias, Principado de	336	182	154	608	345	263	1.81
Balears, Illes	-	-	-	-	-	-	-
Canarias*	-	-	-	-	-	-	-
Cantabria*	-	-	-	-	-	-	-
Castilla y León	1,745	692	1,053	2,775	1,385	1,390	1.59
Castilla - La Mancha	850	653	197	1,515	1,200	314	1.78
Cataluña	28,758	23,846	4,912	81,572	50,076	31,497	2.84
Comunitat Valenciana	29,615	10,608	19,007	497,819	54,407	443,413	16.81
Extremadura	1,663	746	917	3,197	1,612	1,585	1.92
Galicia	155	96	59	305	181	124	1.97
Madrid, Comunidad de	5,785	5,045	740	16,769	15,472	1,297	2.90
Murcia, Región de	5,650	2,022	3,628	115,348	7,739	107,609	20.41
Navarra, Comunidad Foral de	1,869	1,599	271	4,347	4,010	337	2.33
País Vasco	714	420	295	2,320	1,724	596	3.25
Rioja, La	1,227	1,103	124	2,453	2,255	199	2.00
Ceuta	-	-	-	-	-	-	-
Melilla	-	-	-	-	-	-	-

* The size of the sample in these communities does not facilitate the INE the broken down results, with the objective of maintaining statistical secrecy. Nevertheless, the data corresponding to these communities are included in the national total.

4. Open establishments, capacity, occupancy and number of staff by autonomous cities and communities

Autonomous cities and communities	Estimated open establishments	Capacity		Occupied pitches	Occupancy rate per pitch	Weekend occupancy rate	Employed personnel
		Estimated bedplaces	Estimated pitches				
TOTAL	431	260,469	82,463	901,704	35.27	36.73	2,684
Andalucía	95	53,665	17,051	137,835	26.08	27.90	568
Aragón	40	16,448	4,914	32,736	21.49	23.07	141
Asturias, Principado de	6	3,461	1,162	2,347	6.52	10.22	19
Balears, Illes	-	-	-	-	-	-	-
Canarias*	-	-	-	-	-	-	-
Cantabria*	-	-	-	-	-	-	-
Castilla y León	26	9,116	2,885	11,685	13.07	17.02	57
Castilla - La Mancha	11	3,531	969	4,158	13.84	15.88	29
Cataluña	68	48,578	15,087	139,946	29.92	33.54	473
Comunitat Valenciana	88	62,557	19,748	337,398	55.11	54.90	785
Extremadura	10	3,556	1,111	7,488	21.73	22.73	56
Galicia	16	5,712	1,957	2,118	3.49	3.16	51
Madrid, Comunidad de	18	16,466	5,502	78,694	46.14	44.53	162
Murcia, Región de	18	14,815	4,898	72,775	47.93	52.01	181
Navarra, Comunidad Foral de	9	4,866	1,423	11,602	26.30	28.42	49
País Vasco	10	5,654	1,741	10,152	18.81	28.89	38
Rioja, La	4	4,965	1,529	30,418	64.18	62.49	34
Ceuta	-	-	-	-	-	-	-
Melilla	-	-	-	-	-	-	-

5. Travellers and overnight stays, average stay, capacity, occupancy and number of staff by provinces with the greatest number of overnight stays**

Provinces	Travellers		Overnight stays		Average stay	Estimated open establishments	Estimated pitches	Occupancy rate per pitch	Employed personnel
	Residents in Spain	Residents abroad	Residents in Spain	Residents abroad					
	Alicante\Alacant	2,601	10,892	23,981					
Castellón\Castelló	2,305	5,792	12,178	90,327	12.66	31	5,834	40.84	220
Málaga	1,252	5,011	11,062	76,380	13.96	27	4,406	39.05	160
Valencia\València	5,702	2,322	18,247	38,088	7.02	23	4,776	42.88	155
Almería	907	2,438	7,565	38,798	13.86	15	2,347	33.93	91
Barcelona	8,197	2,367	19,910	20,117	3.79	16	4,928	26.22	159
Girona	7,989	2,067	13,956	9,456	2.33	25	4,518	28.14	174
Cádiz	632	2,295	1,568	18,452	6.84	13	3,343	20.38	102
Granada	1,469	2,162	3,088	14,625	4.88	19	2,370	18.84	94
Lleida	5,915	6	12,719	54	2.16	17	2,925	45.53	68
Huelva	3,693	810	8,016	4,122	2.70	9	2,687	19.33	54
Huesca	2,919	34	8,086	55	2.76	26	3,525	26.13	98
Tarragona	1,745	473	3,491	1,870	2.42	10	2,715	22.79	73
Teruel	1,661	16	2,706	167	1.71	9	949	5.62	24
Córdoba	699	445	1,333	1,067	2.10	4	931	12.58	24

** Provinces belonging to uniprovincial Autonomous Communities have not been included because they are reflected in previous tables.

6. Travellers, overnight stays, average stay, open establishments, capacity, occupancy and number of staff from tourist areas with the greatest number of overnight stays

Tourist areas	Travellers		Overnight stays		Average stay	Estimated open establishments	Estimated pitches	Occupancy rate per pitch	Employed personnel
	Residents in	Residents abroad	Residents in	Residents abroad					
	Spain		Spain						
Costa Blanca	1,284	8,197	10,168	269,221	29.47	26	6,940	76.87	348
Costa Cálida	840	3,164	3,425	100,390	25.93	9	3,798	53.93	146
Costa de Castellón	1,356	5,335	10,600	89,005	14.89	26	5,436	41.48	206
Costa del Sol	682	4,380	10,087	73,326	16.48	12	3,067	51.65	124
Costa Valencia	2,125	2,059	8,800	39,178	11.47	11	3,227	45.88	106
Costa de Almería	769	2,362	7,329	36,285	13.93	12	2,039	34.40	71
Costa Barcelona	3,738	2,348	10,807	20,081	5.07	5	3,561	17.93	107
Pirineus	14,855	32	29,476	38	1.98	34	5,162	46.71	151
Costa de la Luz de Cádiz	464	2,073	1,177	18,108	7.60	10	2,769	20.32	84
Costa Brava	2,253	2,041	3,715	9,431	3.06	12	2,890	20.63	117
Costa Tropical	278	1,157	1,082	11,287	8.62	6	1,035	25.01	34
Costa de la Luz de Huelva	3,095	774	6,845	2,921	2.52	4	1,959	15.52	29
Pirineo Aragonés	2,919	27	8,086	48	2.76	23	3,326	26.12	93
P.N. los Alcornocales	220	870	733	4,487	4.79	6	1,283	24.13	35
Costa Daurada	1,621	145	3,124	468	2.03	8	2,143	25.46	55

7. Travellers, overnight stays, average stay, open establishments, capacity, occupancy and number of staff from tourist sites with the greatest number at overnights stays

Tourist sites	Travellers		Overnight stays		Average stay	Estimated open establishments	Estimated pitches	Occupancy rate per pitch	Employed personnel
	Residents in	Residents abroad	Residents in	Residents abroad					
	Spain		Spain						
Benidorm	480	4,391	4,583	148,002	31.00	9	3,758	78.43	154
Cartagena	156	1,544	1,468	61,689	31.00	3	2,537	42.34	95
Marbella	386	1,762	7,950	33,115	19.12	3	1,310	50.85	58
Mazarrón	143	1,323	1,081	31,157	21.99	3	874	79.14	35
Oliva	97	1,350	1,712	27,269	20.03	5	1,248	41.27	69
Benicasim/Benicàssim	122	1,070	2,082	22,418	20.55	3	833	56.05	34
Cabanes	62	529	485	23,624	31.00	3	964	42.70	46
Peñíscola/Peñíscola	632	2,268	1,899	21,514	8.07	8	1,287	40.70	52
Vélez-Málaga	135	804	1,131	21,145	23.72	3	544	65.64	32
Campello (EI)	28	441	2,199	9,456	24.85	3	301	69.14	21
Motril	229	783	788	7,808	8.49	3	586	33.23	24
Tarifa	124	730	543	4,242	5.60	4	944	20.66	26

8. Travellers and overnight stays by countries of residence

Countries	Travellers		Overnight stays	
	Total	%	Total	%
TOTAL	108,669	100.00	938,523	100.00
Residents in Spain	62,457	57.47	189,564	20.20
Residents abroad	46,213	42.53	748,959	79.80
TOTAL residents abroad	46,213	100.00	748,959	100.00
TOTAL residents in E.U. (excluding Spain)	43,428	93.98	724,783	96.77
- Germany	8,734	18.90	193,202	25.80
- Austria	552	1.19	5,715	0.76
- Belgium	1,868	4.04	33,910	4.53
- Denmark	674	1.46	10,433	1.39
- Finland	525	1.14	9,183	1.23
- France	7,816	16.91	65,434	8.74
- Greece	-	-	-	-
- Ireland	507	1.10	4,845	0.65
- Italy	1,027	2.22	4,972	0.66
- Luxembourg	125	0.27	1,606	0.21
- Netherlands	6,169	13.35	99,128	13.24
- Poland	221	0.48	5,211	0.70
- Portugal	126	0.27	785	0.10
- United Kingdom	13,263	28.70	262,755	35.08
- Czech Republic	185	0.40	1,027	0.14
- Sweden	1,319	2.85	25,248	3.37
- Other EU countries	317	0.69	1,330	0.18
Norway	318	0.69	6,137	0.82
Russia	35	0.08	520	0.07
Switzerland	1,445	3.13	13,716	1.83
Other European countries	86	0.19	366	0.05
United States of America	117	0.25	370	0.05
Rest of America	114	0.25	625	0.08
African countries	81	0.17	126	0.02
Other countries	588	1.27	2,316	0.31

* Non-significant data

**Tourist accommodation occupancy survey
(Rural tourist accommodation)**

January 2015

Provisional data

**travellers,
overnight stays**

Autonomous Communities	Number of travellers			Number of overnight stays			Average stay
	Total	Residents In Spain	Residents abroad	Total	Residents In Spain	Residents abroad	
TOTAL	107,614	96,902	10,712	279,609	224,902	54,707	2.60
Andalucía	7,911	6,891	1,019	28,105	20,563	7,542	3.55
Aragón	6,255	6,124	131	19,589	19,243	346	3.13
Asturias, Principado de	3,270	3,261	9	7,502	7,493	9	2.29
Balears, Illes	2,007	752	1,255	7,217	1,582	5,635	3.60
Canarias	6,674	1,724	4,950	36,177	6,502	29,674	5.42
Cantabria	5,048	4,933	115	9,502	9,279	223	1.88
Castilla y León	23,448	22,711	737	50,016	48,291	1,726	2.13
Castilla-La Mancha	8,398	8,164	235	19,438	18,928	510	2.31
Cataluña	13,457	12,673	784	31,784	28,532	3,252	2.36
Comunitat Valenciana	5,190	4,777	412	16,709	13,605	3,104	3.22
Extremadura	5,994	5,798	195	11,232	10,749	483	1.87
Galicia	3,566	3,412	153	5,610	5,351	259	1.57
Madrid, Comunidad de	6,233	5,927	306	11,239	10,707	533	1.80
Murcia, Región de	2,344	2,227	118	5,171	4,673	498	2.21
Navarra, Comunidad Foral de	3,448	3,306	142	9,687	9,189	498	2.81
País Vasco	3,354	3,208	146	7,862	7,457	405	2.34
Rioja, La	1,018	1,012	5	2,769	2,758	11	2.72
Ceuta	-	-	-	-	-	-	-
Melilla	-	-	-	-	-	-	-
Annual rate	17.71	18.49	11.06	25.01	30.27	7.23	6.21
Cumulative annual rate	17.71	18.49	11.06	25.01	30.27	7.23	6.21

2. Open rural establishments, bed-places, occupancy rates and employed personnel by Autonomous City and Community

Autonomous Communities	Estimated open rural establishments	Estimated bed-places	Occupancy rate			Employed personnel
			Of bed-places	Of bed-places at weekend	Of bedrooms	
TOTAL	14,111	126,328	7.12	12.94	9.30	18,999
Andalucía	1,453	12,227	7.41	11.53	11.58	2,007
Aragón	1,098	8,528	7.39	13.29	9.68	1,234
Asturias, Principado de	1,143	10,243	2.36	4.08	3.35	1,371
Balears, Illes	73	1,294	17.98	21.75	21.49	213
Canarias	584	3,635	31.82	29.20	48.56	829
Cantabria	260	4,111	7.44	16.51	8.53	425
Castilla y León	3,170	26,586	6.06	12.81	7.72	4,343
Castilla-La Mancha	1,365	11,955	5.24	11.27	6.16	1,715
Cataluña	1,845	14,792	6.92	14.57	7.69	2,502
Comunitat Valenciana	926	8,879	6.06	10.08	10.96	1,362
Extremadura	498	6,003	6.03	13.98	7.90	708
Galicia	389	4,758	3.80	7.46	4.27	547
Madrid, Comunidad de	244	3,579	10.11	21.16	13.94	453
Murcia, Región de	136	1,898	8.78	19.73	9.80	203
Navarra, Comunidad Foral de	574	4,254	7.32	15.10	7.56	684
País Vasco	248	2,609	9.70	15.39	11.75	276
Rioja, La	105	976	9.11	19.92	9.31	127
Ceuta	-	-	-	-	-	-
Melilla	-	-	-	-	-	-
Annual rate	1.44	0.35	24.45	21.10	19.40	-0.39
Cumulative annual rate	1.44	0.35	24.45	21.10	19.40	-0.39

3. Number of travellers, overnight stays and average stay in Provinces with the greatest number of overnight stays¹

Provinces	Number of travellers			Number of overnight stays			Average stay
	Total	Residents In Spain	Residents abroad	Total	Residents In Spain	Residents abroad	
Santa Cruz de Tenerife	4,673	1,145	3,528	26,430	4,837	21,593	5.66
Ávila	5,977	5,754	223	15,080	14,637	442	2.52
Girona	5,365	4,792	573	12,664	10,988	1,676	2.36
Málaga	980	863	117	11,398	6,447	4,951	11.63
Huesca	2,877	2,786	91	10,782	10,573	209	3.75
Palmas, Las	2,001	579	1,423	9,746	1,665	8,081	4.87
Cáceres	4,937	4,803	133	9,339	9,019	320	1.89
Lleida	3,512	3,445	67	8,882	7,706	1,176	2.53
Segovia	4,435	4,334	101	8,154	7,871	283	1.84
Barcelona	3,391	3,327	64	7,855	7,661	194	2.32
Salamanca	3,353	3,159	194	6,419	6,143	276	1.91
Alicante\Alacant	1,584	1,237	347	6,396	3,462	2,935	4.04
Castellón\Castelló	1,947	1,947	-	6,378	6,378	-	3.28
Albacete	2,363	2,346	17	6,322	6,288	34	2.67
Teruel	2,222	2,183	39	5,606	5,551	55	2.52

4. Open rural establishments, bed-places, occupancy rates and employed personnel in Provinces with the highest number of overnight stays¹

Provinces	Estimated open rural establishments	Estimated bed-places	Occupancy rate			Employed personnel
			Of bed-places	Of bed-places at weekend	Of bedrooms	
Santa Cruz de Tenerife	453	2,634	32.06	27.98	49.72	640
Ávila	782	5,680	8.55	17.17	12.88	1,161
Girona	633	5,238	7.78	16.00	8.41	979
Málaga	531	3,331	11.03	10.84	19.31	666
Huesca	580	4,260	8.14	13.88	9.74	639
Palmas, Las	131	1,001	31.21	32.41	45.40	189
Cáceres	418	5,048	5.97	14.00	7.72	575
Lleida	523	3,672	7.80	17.09	8.56	640
Segovia	384	3,501	7.49	16.50	8.21	552
Barcelona	470	3,991	6.33	13.69	7.05	644
Salamanca	461	3,571	5.79	11.71	7.03	568
Alicante\Alacant	192	1,898	10.85	16.11	19.32	263
Castellón\Castelló	443	3,872	5.31	9.39	9.54	586
Albacete	553	3,622	5.62	11.37	5.96	656
Teruel	320	2,639	6.84	14.02	11.32	380

¹ Provinces belonging to uniprovincial Autonomous Communities have not been included because they are reflected in previous tables.

5. Number of travellers, overnight stays, average stay, capacity and occupancy rates in areas with the highest number of overnight stays

Areas	Number of travellers		Number of overnight stays			Capacity		Occupancy rate		
	Residents In Spain	Residents abroad	Residents In Spain	Residents abroad	Average stay	Estimated open rural establishments	Estimated bed-places	Of bed-places	Of bed- places at weekend	Of bedrooms
Pirineus	6,167	347	14,527	1,847	2.51	764	5,738	9.18	19.99	9.89
Isla de Tenerife	893	2,334	2,023	11,261	4.12	111	1,129	37.35	34.37	51.19
P.Nacional Teide	702	1,864	1,602	8,941	4.11	76	833	40.03	35.85	55.51
Pirineo Aragónés	2,533	42	9,326	157	3.68	534	3,938	7.74	14.89	8.80
Pirineo Navarro	2,974	73	8,801	367	3.01	525	3,842	7.67	15.98	7.92
Isla de La Palma	199	722	2,405	6,703	9.89	235	945	31.08	24.93	55.33
Isla de Mallorca	537	1,180	1,214	5,454	3.88	66	1,183	18.17	21.20	21.86
Costa Brava	2,047	305	4,693	1,029	2.43	351	3,017	6.11	12.70	6.41
Isla Gran Canaria	396	808	1,112	4,574	4.72	104	675	26.90	28.34	42.68
P.Nacional Taburiente	145	491	1,273	4,218	8.63	141	570	31.09	26.49	57.22
Isla de La Gomera	48	450	268	3,292	7.14	69	411	27.66	25.78	41.62
P.Nacional Garajonay	48	450	268	3,292	7.14	69	411	27.66	25.78	41.62
Isla de Lanzarote	134	466	416	2,791	5.35	19	254	40.67	41.38	52.83
P.Natural Sierra de Gazalema	936	87	2,579	353	2.87	126	789	11.98	20.50	17.56
Costa Barcelona	1,255	43	2,597	151	2.12	127	1,009	8.75	16.13	9.66

6. Number of travellers, overnight stays, average stay, capacity, occupancy rates and employed personnel per rural house by Autonomous City and Community²

Autonomous Communities	Number of travellers		Number of overnight stays			Capacity		Occupancy rate		Employed personnel
	Residents In Spain	Residents abroad	Residents In Spain	Residents abroad	Average stay	Estimated open rural establish.	Estimated bed-places	Of bed-places at weekends	Of bed- places	
TOTAL	65,034	6,279	165,077	35,804	2.82	12,191	95,598	6.77	12.44	15,506
Andalucía	6,891	1,019	20,563	7,542	3.55	1,453	12,227	7.41	11.53	2,007
Aragón	4,347	130	12,654	314	2.90	831	6,330	6.59	12.16	934
Asturias, Principado de	1,015	0	3,001	0	2.96	758	4,707	2.06	3.31	838
Balears, Illes	440	472	1,098	1,473	2.82	26	379	21.91	28.39	49
Canarias	635	2,438	4,091	17,618	7.06	554	2,783	25.10	22.06	669
Cantabria	1,616	7	3,014	7	1.86	129	1,846	5.27	11.84	177
Castilla y León	13,693	339	33,432	832	2.44	2,810	19,409	5.69	12.05	3,468
Castilla-La Mancha	7,931	234	18,532	508	2.33	1,337	11,441	5.36	11.51	1,682
Cataluña	12,673	784	28,532	3,252	2.36	1,845	14,792	6.92	14.57	2,502
Comunitat Valenciana	3,736	398	11,635	2,833	3.50	889	6,954	6.70	11.03	1,266
Extremadura	1,510	94	2,928	244	1.98	295	2,859	3.58	9.21	363
Galicia	2,442	126	3,929	209	1.61	285	3,366	3.96	7.61	368
Madrid, Comunidad de	891	35	2,849	35	3.12	76	732	12.68	25.20	104
Murcia, Región de	1,661	38	3,920	346	2.51	125	1,581	8.70	21.35	160
Navarra, Comunidad Foral de	3,306	142	9,189	498	2.81	574	4,254	7.32	15.10	684
País Vasco	1,235	19	2,951	83	2.42	99	961	10.14	16.17	108
Rioja, La	1,012	5	2,758	11	2.72	105	976	9.11	19.92	127
Ceuta	-	-	-	-	-	-	-	-	-	-
Melilla	-	-	-	-	-	-	-	-	-	-

² To facilitate the comparability between data from different Autonomous Communities (and because of the different regulation and different characteristics), a group called rural house has been created, with those establishments with similar typology (location, capacity, etc...). The variables included in the previous table have been estimated with that type of establishments.

7. Travellers and overnight stays by country of residence

Results by countries	Travellers		Overnight stays	
	Total	%	Total	%
TOTAL	107,614	100.00	279,609	100.00
Residents Spain	96,902	90.05	224,902	80.43
Residents abroad	10,712	9.95	54,707	19.57
Total Residents abroad	10,712	100.00	54,707	100.00
Total Residents in EU (excluding Spain)	9,261	86.46	50,653	92.59
- Germany	3,287	30.69	26,253	47.99
- Belgium	422	3.94	1,431	2.62
- France	1,210	11.29	4,367	7.98
- Italy	435	4.06	1,067	1.95
- Netherlands	748	6.98	3,658	6.69
- Portugal	384	3.59	759	1.39
- United Kingdom	2,021	18.87	8,415	15.38
Switzerland	153	1.43	668	1.22
Other European countries	1,228	11.47	6,410	11.72
United States of America	305	2.85	730	1.34
Other countries	518	4.83	948	1.73

HOLIDAY DWELLING PRICE INDEX (HDPI)

January 2015

Provisional data

National general index and breakdown by rates

	Index	Annual variation rate
TOTAL	110.97	6.26
Normal	108.23	4.00
Weekend	111.71	6.69
Tour-operators and travel agencies	113.15	7.42

National general index and breakdown by modalities

	Index	Annual variation rate
TOTAL	110.97	6.26
Studio	110.03	6.16
Dwellings 2/4 bedplaces	110.90	7.15
Dwellings 4/6 bedplaces	113.01	1.91

Tourist Campsite Price Index (TCSPI). 2002 Base

January 2015

Provisional data

National general index and breakdown by rates

	Index	Annual variation rate
TOTAL	143.08	0.06
Normal rate	139.35	0.33
Special rate for stays up to one month	126.20	-0.49
Special rate for stays longer than one month	145.57	-0.25
Tarifa bungalow*	99.98	-0.02

National general index and breakdown by categories

	Index	Annual variation rate
TOTAL	143.08	0.06
Luxury and first	152.45	-0.18
Second	137.80	0.22
Third	145.07	1.54

*2014 Base

TCSPI (ANNEX OF TABLES) - JANUARY 2015

27th february 2015

Rural Tourism Accommodation Price Index (RTAPI)

January 2015

Provisional data

General Autonomous Cities and Communities and national indices

	Index	Annual variation rate
TOTAL	132.39	0.14
Andalucía	137.04	2.97
Aragón	159.80	4.62
Asturias, Principado de	133.41	1.34
Balears, Illes	107.68	8.73
Canarias	104.62	-0.59
Cantabria	163.25	0.56
Castilla y León	130.69	1.09
Castilla - La Mancha	125.13	5.09
Cataluña	139.33	-9.32
Comunitat Valenciana	132.10	2.15
Extremadura	100.01	1.49
Galicia	131.22	-0.80
Madrid, Comunidad de	137.51	2.08
Murcia, Región de	144.68	-8.40
Navarra, Comunidad Foral de	191.43	0.76
País Vasco	157.58	2.63
Rioja, La	147.84	-6.98
Ceuta	-	-
Melilla	-	-

National general index and breakdown by rates

	Index	Annual variation rate
TOTAL	132.39	0.14
Normal	132.66	0.43
Weekend	134.12	-0.03

National general index and breakdown by rent modality

	Index	Annual variation rate
TOTAL	132.39	0.14
Shared use (in case of per room rent modality)	115.14	1.15
Full use (rent of entire dwelling)	140.70	-0.28