

27 March 2013

**Non-Hotel Tourist Accommodation Occupancy Survey**  
February 2013. *Provisional data*

**Overnight stays in non-hotel tourist accommodation decrease 2.0%<sup>(1)</sup> in February, as compared with the same month of 2012**

Overnight stays in non-hotel tourist accommodation (holiday dwellings, campsites and rural tourism accommodation) exceeded 4.7 million in February, 2.0% less than in the same month of 2012. Overnight stays by resident travellers decreased 8.4%, whilst by non-residents increased 0.5%. The average stay decreased 0.9%, standing at 6.9 overnights per traveller.

During the first months of the year, the overnight stays decreased 1.0% as compared with the same month of the previous year.

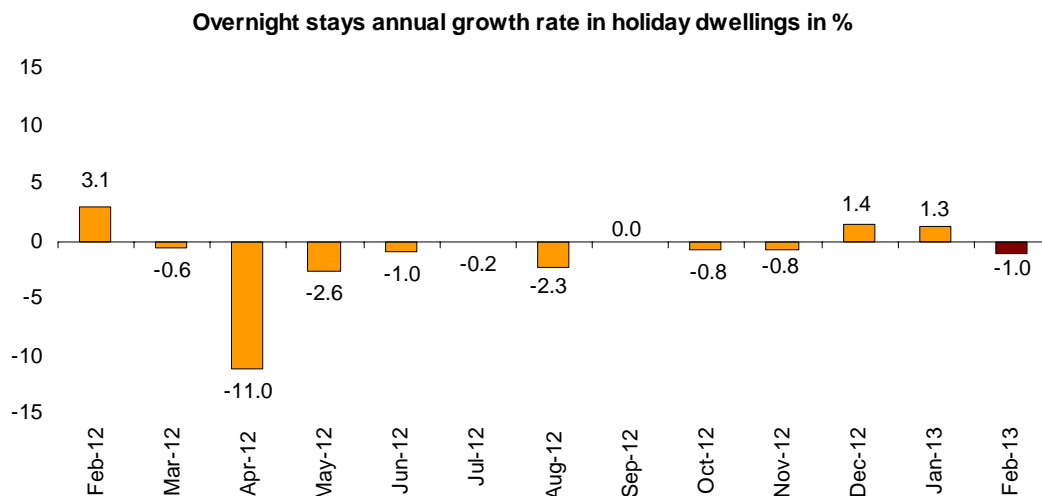
Travellers and overnight stays in collective non-hotel tourist accommodation during the month of February were:

February 2013	Travellers	Overnight stays
Residents in Spain	293,936	849,903
EU (not including Spain)	331,662	3,352,480
Rest of the world	59,916	542,411
<b>TOTAL</b>	<b>685,514</b>	<b>4,744,794</b>

**Holiday Dwellings**

Overnight stays in holiday dwellings decreased 1.0% in February. Overnight stays of residents decreased 4.4%, whilst of non-residents, 0.5%.

The average stay decreased 2.8%, as compared with February 2012, standing at 7.8 overnights stays per traveller.

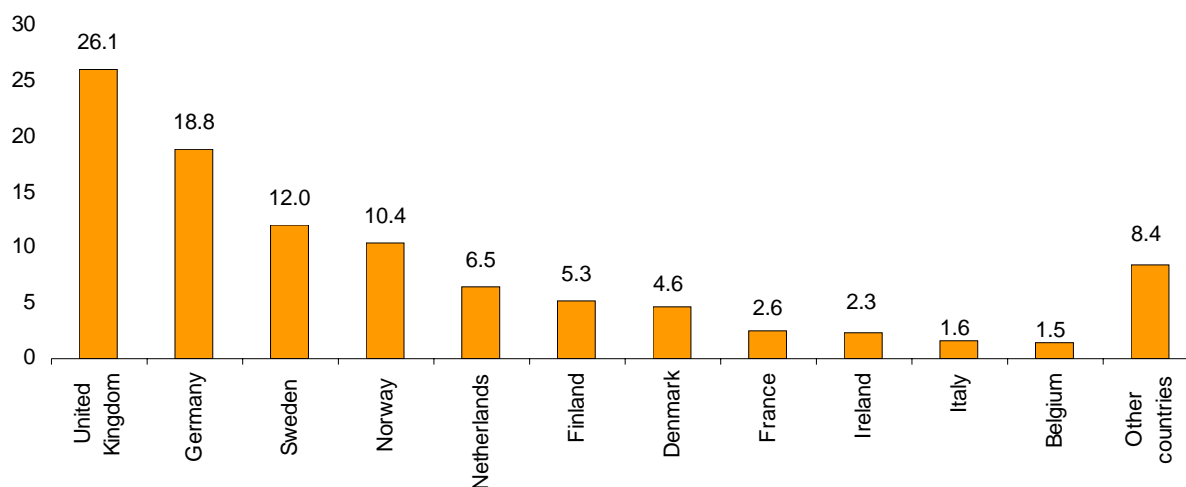


<sup>(1)</sup> Due to the update made in the rural tourist accommodation directory in Región de Murcia, the data published cannot be directly compared to those published last year. In order to avoid this break in the series, linking coefficients have been calculated, allowing for comparing the data from different years. The coefficients are published monthly on the INE website, in the section dedicated to this statistical operation, in a specific section entitled linking coefficients.

In February, 36.0% of the total available bedplaces for holiday dwellings were occupied, 1.0% less than in the same month in 2012. The weekend occupancy rate by bedplaces stood at 36.9%, with an annual decrease of 1.5%.

Non-resident overnight stays in holiday dwellings represented 86.9% of the total. The United Kingdom was the main country of origin, with 824,578 overnight stays, 0.7% more than in February last year. The following country of origin was Germany, with 594,917 overnight stays, 1.0% more.

**Distribution of overnight stays of residents abroad of the 11 main countries by origin**



Canarias was the preferred holiday dwelling destination, with 2.4% less overnight stays and Andalucía, with 8.4% more. Canarias presented the highest occupancy rate with 79.6% of the dwellings offered.

By tourist area, the island of Gran Canaria was the preferred destination, with more than one million of overnight stays and an occupancy rate of 87.6%.

The tourist sites with the greatest number of overnight stays were San Bartolomé de Tirajana, Arona and Mogán.

## Campsites

The overnight stays in tourist campsites registered an annual decrease of 0.8%, in February. Overnight stays by resident travellers decreased 6.6%, whilst non-resident travellers increased 0.9%.

36.0% of the offered pitches were occupied, 2.1% more. The weekend occupancy rate by pitch reached 36.8%, with an annual decrease of 0.7%.

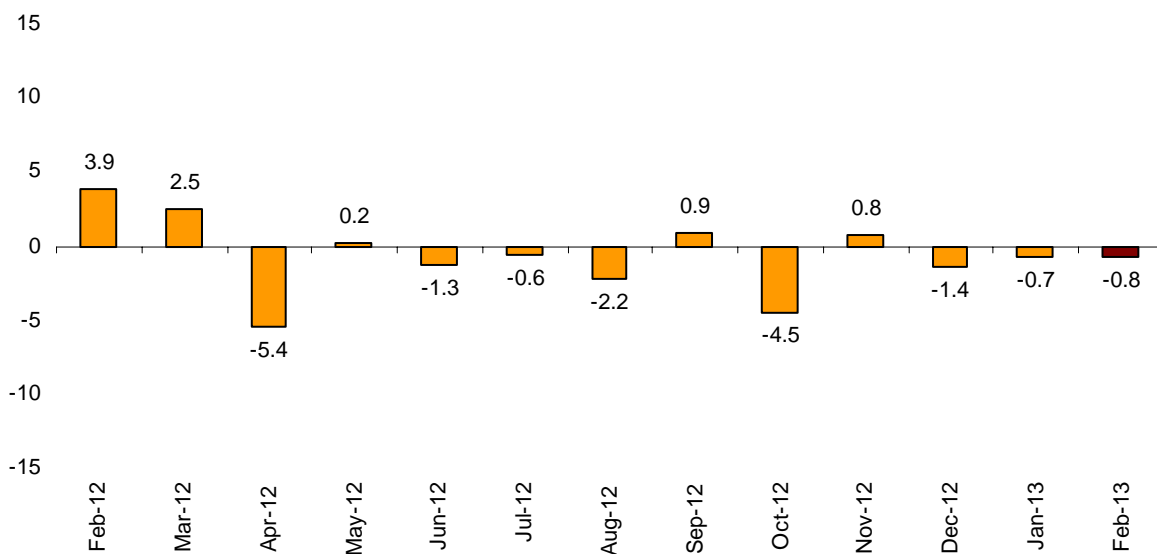
79.3% of the overnight stays on tourist campsites were by non-residents. The United Kingdom was the main country of origin, with 34.2% of the overnight stays by non-residents, 2.3% less than in February 2012.

Comunitat Valenciana was the preferred destination for camping, with 423,942 overnight stays, 4.0% more. La Rioja reached the highest occupancy rate on campsites, with 60.5% of the pitches offered.

By tourist area, Costa Blanca was the preferred destination for camping, with 242,407 overnight stays and an occupancy rate of 73.3% of the pitches offered.

The tourist sites with the highest number of overnight stays were Benidorm, Cartagena and Marbella.

**Overnight stays annual growth rate in campsites in %**

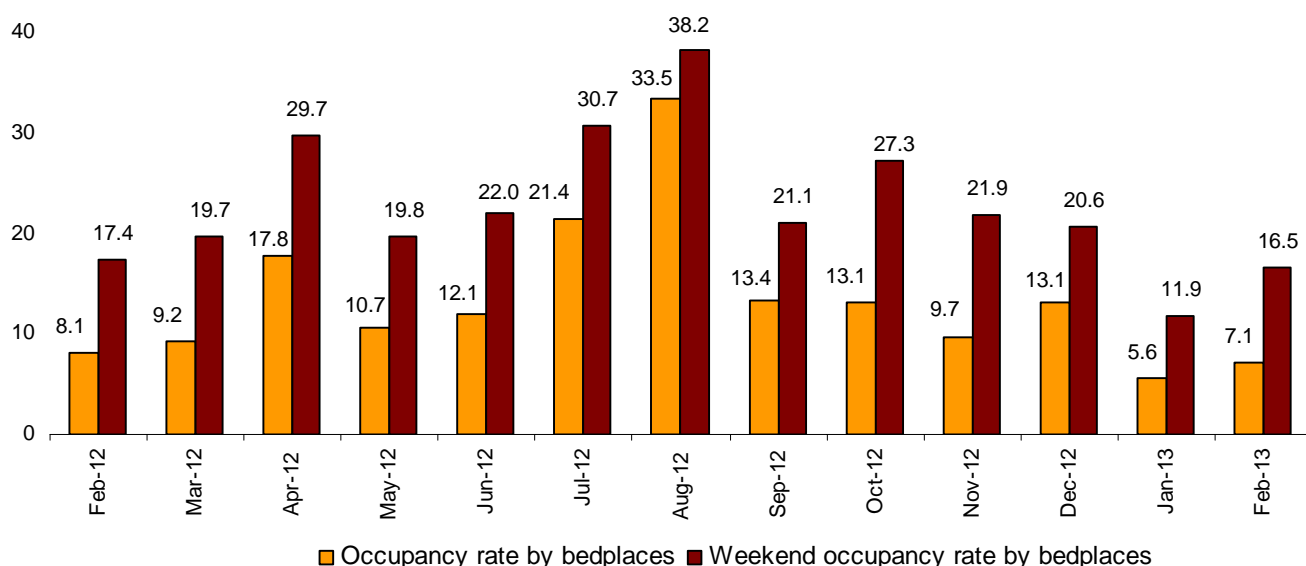


### Rural Tourism Accommodation

Overnight stays in rural tourism accommodation presented an annual decrease of 17.2%<sup>(1)</sup>, in February. Resident overnight stays decreased 18.1%, and those of non-residents grew 13.9%.

7.1% of the bedplaces in rural tourism accommodation were occupied, representing a 12.9% annual decrease. The weekend occupancy rate stood at 16.5%, with a decrease of 6.0%.

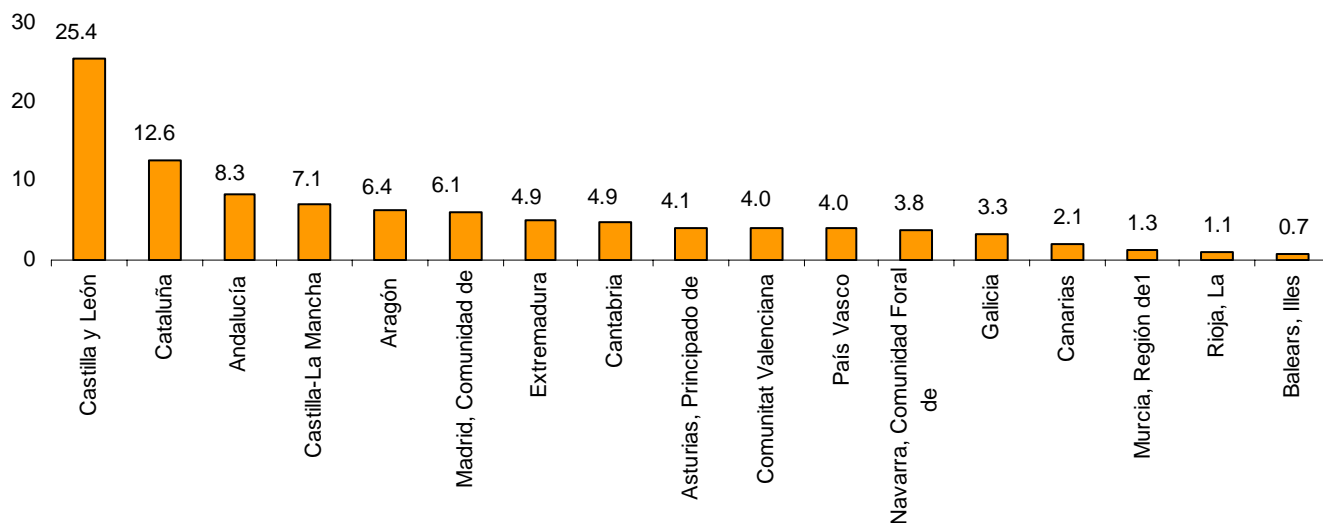
Occupancy rate by bedplaces and bedplaces on weekends



Castilla y León was the preferred destination, with 52,800 overnight stays, 10.1% less than in February 2012. Canarias reached the highest occupancy rate, with 30.9% of the offered bedplaces.

By tourist area, the island of Tenerife was the main destination, with 13,221 overnight stays. The Teide National Park reached the greatest occupancy rate, 43.8% of the offered bedplaces.

Distribution of overnight stays of traveller residents by autonomous community of destination in %



27 March 2013

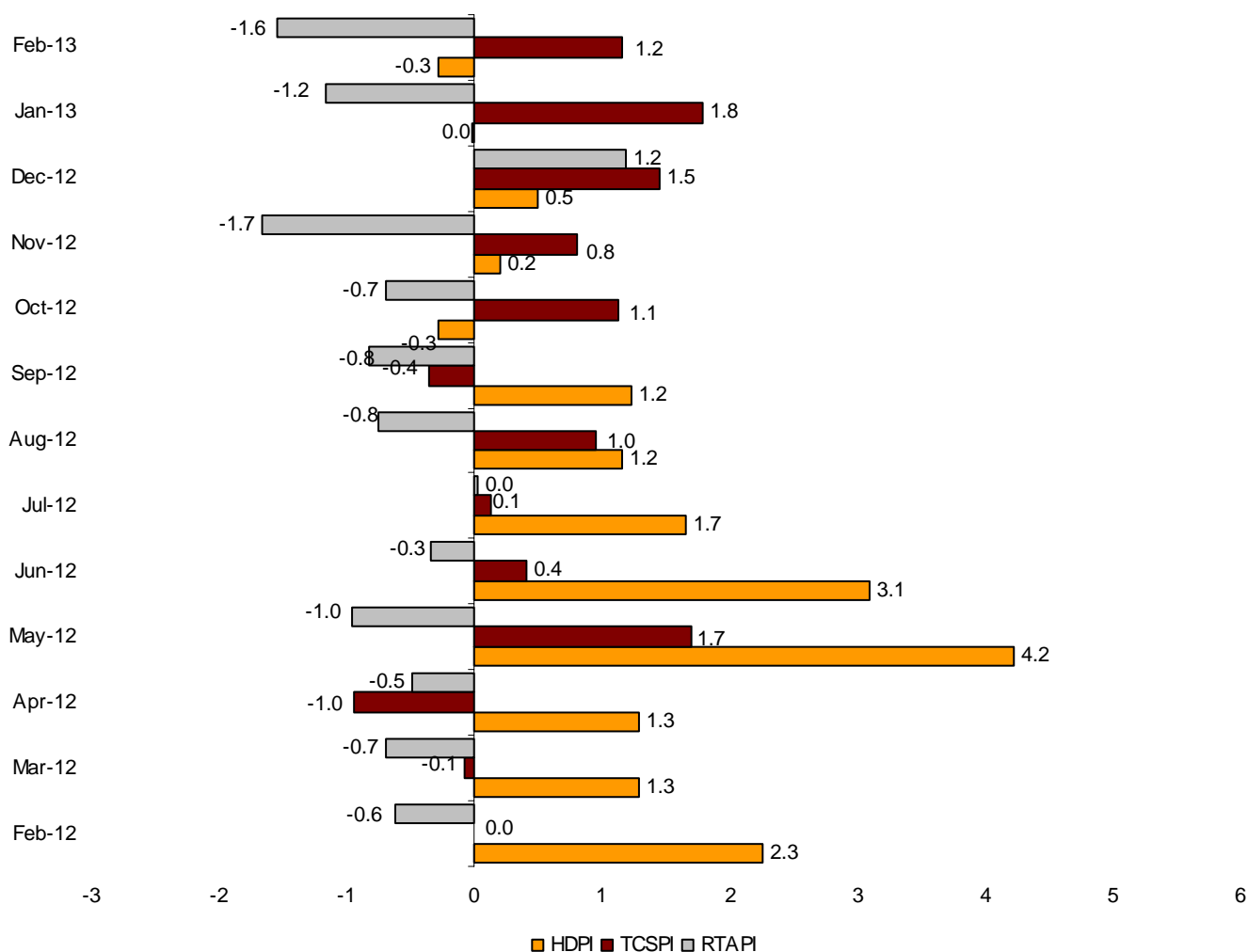
### Price Indices

The Holiday Dwelling Price Index (HDPI) registered an annual decrease of 0.3%. The *tour operators and travel agencies* rate, which carried the greatest weight in the weighting structure for this month (60.0%), maintained its rate as compared to February of 2012.

The Tourist Campsite Price Index (TCPI) registered an increase of 1.2% in the annual rate. The *normal rate*, which had the greatest weight in the weighting structure for this month (50.8%), decreased 0.4%.

The Rural Tourism Accommodation Price Index (RTAPI) registered a decrease of 1.6% in February. The *weekend rate*, which accounted for 71.2% of the total weight, decreased 1.3%.

**Price Indices. Interannual variation rates**



**Performance of travellers and overnight stays in all Spanish collective tourist accommodation**

Overnight stays in Spanish collective tourist accommodation (hotels, holiday dwellings, campsites and rural tourism accommodation) registered an annual decrease of 6.2%<sup>(1)</sup>, in February, as compared with the same month of the last year.

Overnight stays by residents decreased 14.4%, whereas non-residents, 1.4%.

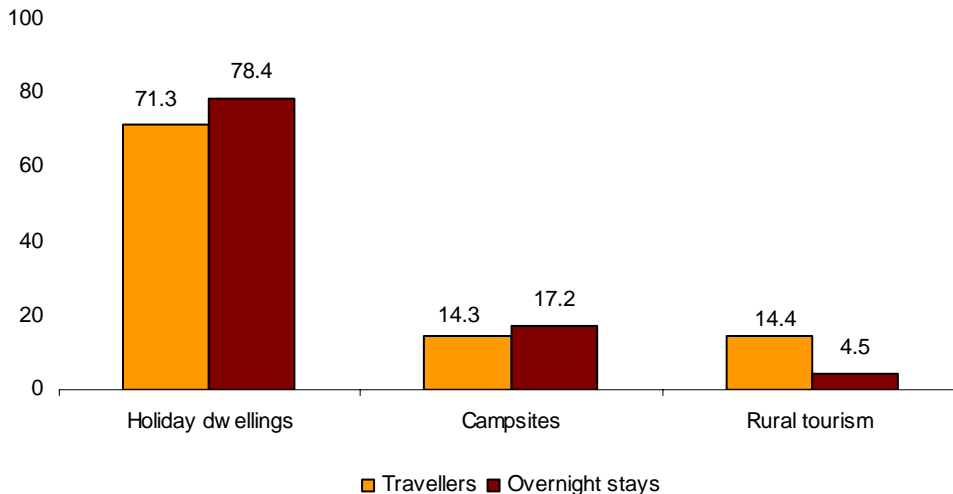
The average stay increased 1.6%, standing at 3.5 nights per traveller.

Travellers and overnight stays in collective tourist accommodation were:

February 2013	Holiday dwellings	Campsites	Rural T.	Non-hotel	Hotels	Total
<b>Travellers</b>	466,729	102,349	116,437	685,515	4,349,766	5,035,281
Residents	123,572	65,266	105,098	293,936	2,535,554	2,829,490
Non-residents	343,157	37,082	11,339	391,578	1,814,212	2,205,790
<b>Overnight stays</b>	3,639,063	849,951	255,779	4,744,793	13,074,533	17,819,326
Residents	475,634	176,065	198,204	849,903	5,238,466	6,088,369
Non-residents	3,163,429	673,887	57,575	3,894,891	7,836,067	11,730,958

Of the total overnight stays in collective tourist accommodation in the month of February, 73% were accounted for hotels, and 27% did so for non-hotel tourist accommodation.

**Distribution of travellers and overnight stays by modality over total non-hotel accommodation in %**



The main countries of origin in overall regulated tourist accommodation were Germany (with 23.2% of the total number of non-resident overnight stays), United Kingdom (23.1%) and Netherlands (5.6%).

Canarias was the preferred destination regarding overall tourist accommodation, with more than 7.3 million overnight stays (3.2% less than in February 2012). It was followed by Andalucía, with more than 2.4 million overnight stays (7.5% less) and Cataluña, with more than 1.9 million overnight stays (8.3% less).

For further information see [INEbase-www.ine.es/en/](http://INEbase-www.ine.es/en/)

All press releases at: [www.ine.es/en/prensa/prensa\\_en.htm](http://www.ine.es/en/prensa/prensa_en.htm)

Press Office: Telephone numbers: 91 583 93 63 / 94 08 – Fax: 91 583 90 87 - [gprensa@ine.es](mailto:gprensa@ine.es)

Information Area: Telephone number: 91 583 91 00 – Fax: 91 583 91 58 – [www.ine.es/infoine/?L=1](http://www.ine.es/infoine/?L=1)

## Tourist Accommodation Occupancy Survey (Holiday Dwellings)

February 2013 Provisional data

### 1. Travellers, overnight stays and average stay by Autonomous Cities and Communities

Autonomous Cities and Communities	Travellers			Overnight stays			Average stay
	Total	Residents in Spain	Residents abroad	Total	Residents in Spain	Residents abroad	
<b>TOTAL</b>	466,729	123,572	343,157	3,639,063	475,634	3,163,429	7.80
Andalucía	55,359	23,371	31,988	283,281	60,312	222,969	5.12
Aragón	9,245	8,528	717	28,379	25,611	2,768	3.07
Asturias, Principado de	647	563	84	3,050	2,812	238	4.71
Balears, Illes	3,159	701	2,458	25,188	2,444	22,744	7.97
Canarias	289,016	28,250	260,766	2,716,572	141,920	2,574,652	9.40
Cantabria	1,076	939	137	4,630	4,030	600	4.30
Castilla y León	3,840	3,463	377	10,977	9,695	1,282	2.86
Castilla - La Mancha	1,989	1,916	74	10,891	5,791	5,099	5.47
Cataluña	28,928	15,842	13,086	151,026	89,570	61,456	5.22
Comunitat Valenciana	35,748	14,482	21,266	250,890	44,301	206,589	7.02
Extremadura	1,610	1,449	161	3,107	2,753	355	1.93
Galicia	2,568	2,115	453	6,762	5,499	1,263	2.63
Madrid, Comunidad de	25,543	15,296	10,247	102,067	54,677	47,391	4.00
Murcia, Región de	2,032	1,226	807	21,951	9,015	12,936	10.80
Navarra, Comunidad Foral de	2,310	2,172	139	8,742	8,087	655	3.78
País Vasco	1,660	1,332	328	7,480	5,316	2,164	4.51
Rioja, La	1,998	1,928	70	4,069	3,801	268	2.04
Ceuta	-	-	-	-	-	-	-
Melilla	-	-	-	-	-	-	-
Interannual rate	1.86	3.84	1.16	-1.03	-4.40	-0.50	-2.83
Cumulative interannual rate	0.23	-0.75	0.55	0.15	-6.69	1.21	-0.08

### 2. Capacity, occupancy and number of staff by Autonomous Cities and Communities

Autonomous Cities and Communities	Capacity		Level of occupancy				Employed personnel
	Estimated bedplaces	Estimated Holiday dwelling	Per bedplaces	Per bedplaces at weekend	Per Holiday dwelling	Per Holiday dwelling at weekend	
<b>TOTAL</b>	360,006	100,542	35.95	36.86	58.61	59.65	18,432
Andalucía	47,733	12,389	21.23	22.73	35.57	37.57	2,397
Aragón	6,052	1,416	16.71	24.64	22.99	30.77	438
Asturias, Principado de	2,606	680	4.18	5.12	7.03	7.92	160
Balears, Illes	3,662	996	24.56	24.20	44.76	41.89	293
Canarias	176,259	55,281	54.76	54.64	79.64	79.70	10,052
Cantabria	2,419	718	6.84	8.73	14.24	16.97	141
Castilla y León	3,678	777	10.64	14.13	19.59	23.53	337
Castilla - La Mancha	4,641	1,209	8.38	10.95	16.94	20.42	379
Cataluña	24,500	5,999	22.00	24.77	39.50	42.24	1,071
Comunitat Valenciana	65,233	13,881	13.73	15.02	28.01	30.34	1,530
Extremadura	1,634	381	6.78	9.39	10.44	15.02	138
Galicia	2,975	841	8.12	8.92	16.93	16.71	173
Madrid, Comunidad de	8,208	3,520	44.11	46.11	58.40	59.12	576
Murcia, Región de	6,243	1,445	12.56	13.47	27.24	28.04	210
Navarra, Comunidad Foral de	1,783	403	17.47	18.20	32.22	32.97	403
País Vasco	1,389	382	19.21	22.54	40.33	41.95	64
Rioja, La	992	224	14.60	26.62	19.81	33.77	70
Ceuta	-	-	-	-	-	-	-
Melilla	-	-	-	-	-	-	-
Interannual rate	3.55	3.84	-0.96	-1.49	-1.41	-1.63	1.48
Cumulative interannual rate	3.81	4.03	-1.67	-1.66	-1.37	-1.59	1.92

### 3. Travellers, overnight stays, capacity, occupancy, total number of staff with greater number of overnight stays \*

Provinces	Travellers		Overnight stays		Average stay	Capacity		Level of occupancy			Employed personnel
	Residents in Spain	Residents abroad	Residents in Spain	Residents abroad		Estimated bed-places	Estimated holiday dwelling	Per bed-places	Per Holiday dwelling	Per Holiday dwelling at weekend	
Palmas, Las	17,455	169,718	92,347	1,707,742	9.62	119,688	37,676	53.45	79.30	79.17	6,168
Santa Cruz de Tenerife	10,795	91,049	49,573	866,910	9.00	56,572	17,606	57.53	80.37	80.84	3,885
Alicante\Alacant	9,559	18,339	28,372	188,590	7.78	50,565	10,923	15.32	30.90	33.31	1,220
Málaga	6,320	22,075	19,822	175,652	6.88	27,991	6,917	25.04	43.88	44.22	1,556
Barcelona	8,400	11,308	69,997	52,162	6.20	10,648	3,066	40.94	64.96	66.53	533
Sevilla	6,095	4,102	15,879	13,510	2.88	4,291	1,398	24.38	41.25	45.10	198
Valencia\València	3,383	2,541	11,402	11,266	3.83	7,502	1,597	10.74	23.80	24.80	219
Granada	5,407	2,190	13,383	9,226	2.98	4,065	1,119	19.75	25.93	32.23	261
Almería	1,301	1,011	2,227	13,749	6.91	4,462	1,102	12.79	22.20	22.95	68
Girona	2,860	1,335	8,256	6,957	3.63	9,993	2,122	5.44	11.07	13.77	339
Huesca	4,411	345	13,478	895	3.02	3,556	791	14.40	18.07	24.87	267
Cádiz	1,814	1,769	3,772	8,192	3.34	2,967	859	14.40	17.80	25.04	147
Lleida	3,908	303	10,201	1,469	2.77	2,425	500	17.19	22.77	32.88	144
Castellón\Castelló	1,540	386	4,526	6,733	5.85	7,166	1,360	5.61	9.72	12.99	92
Teruel	2,716	10	8,552	465	3.31	1,651	390	19.45	23.55	35.49	107

### 4. Travellers, overnight stays, capacity, occupancy, total number of staff from tourist areas with greater number of overnight stays

Tourist Areas	Travellers		Overnight stays		Average stay	Capacity		Level of occupancy			Employed personnel
	Residents in Spain	Residents abroad	Residents in Spain	Residents abroad		Estimated bed-places	Estimated holiday dwelling	Per bed-places	Per Holiday dwelling	Per Holiday dwelling at weekend	
Isla de Gran Canaria	8,744	93,327	45,282	1,018,172	10.42	62,244	20,293	60.72	87.63	87.71	3,036
Isla de Tenerife	7,077	85,158	37,031	803,474	9.11	49,804	15,285	59.96	84.33	84.87	3,374
Isla de Lanzarote	6,077	56,495	35,979	489,973	8.41	39,989	11,947	46.76	71.70	71.51	2,319
Costa Blanca	9,023	17,963	26,628	184,255	7.81	47,897	10,407	15.72	31.56	33.94	1,176
Isla de Fuerteventura	2,634	19,896	11,087	199,596	9.35	17,455	5,435	42.85	64.87	64.13	813
Costa del Sol	5,754	21,953	18,475	174,893	6.98	26,778	6,586	25.79	45.31	45.56	1,501
Catalunya Central	238	47	45,459	8,407	28.00	2,486	902	77.38	87.93	88.46	46
Barcelona	5,514	9,802	9,261	34,186	2.84	4,192	1,053	36.93	65.48	65.03	344
Isla de La Palma	2,390	3,054	7,066	36,350	7.97	3,240	1,126	47.16	56.99	56.07	255
Isla de La Gomera	1,164	2,813	4,606	26,947	7.93	3,135	1,084	35.91	55.98	56.17	232

### 5. Travellers, overnight stays, capacity, occupancy, total number of staff from tourist sites with greater number at overnights stays

Tourist sites	Travellers		Overnight stays		Average stay	Capacity		Level of occupancy			Employed personnel
	Residents in Spain	Residents abroad	Residents in Spain	Residents abroad		Estimated bed-places	Estimated holiday dwelling	Per bed-places	Per Holiday dwelling	Per Holiday dwelling at weekend	
San Bartolomé de Tirajana	7,344	60,894	38,637	667,179	10.34	42,009	13,267	59.69	91.03	91.05	1,934
Arona	1,175	35,867	5,814	342,295	9.40	20,748	6,450	59.88	82.12	82.02	1,370
Mogán	591	29,653	4,361	332,258	11.13	18,866	6,393	63.47	82.83	83.15	996
Tías	2,995	30,545	15,751	263,441	8.32	20,350	6,330	48.80	74.50	75.01	983
Adeje	1,492	24,783	8,489	242,954	9.57	14,949	4,246	59.75	87.37	87.82	974
Teguise	2,706	13,032	17,033	115,124	8.40	11,576	3,496	40.61	63.47	62.89	745
Puerto de la Cruz	3,536	7,855	19,730	101,995	10.69	6,981	2,645	61.88	85.25	86.69	505
Benidorm	1,530	9,792	8,589	95,003	9.15	15,792	3,887	23.43	43.90	45.49	547
Madrid	15,079	10,303	52,032	45,914	3.86	7,552	3,251	45.97	60.27	61.41	512
Yaiza	268	10,166	1,487	81,670	7.97	5,655	1,515	52.01	80.67	78.71	335

\* Provinces belonging to uniprovincial Autonomous Communities have not been included because they are reflected in previous tables.

## 6. Travellers and overnight stays by countries of residence

Countries	Travellers		Overnight stays	
	Total	%	Total	%
TOTAL	466,729	100.00	3,639,063	100.00
Residents in Spain	123,572	26.48	475,634	13.07
Residents abroad	343,157	73.52	3,163,429	86.93
Total residents abroad	343,157	100.00	3,163,429	100.00
Total residents in E.U (excluding Spain)	286,094	83.37	2,649,274	83.75
- Germany	45,164	13.16	594,917	18.81
- Austria	1,940	0.57	24,916	0.79
- Belgium	4,842	1.41	46,369	1.47
-Denmark	14,340	4.18	144,954	4.58
- Finland	18,859	5.50	166,920	5.28
- France	13,049	3.80	80,842	2.56
- Greece	277	0.08	1,308	0.04
- Ireland	10,642	3.10	72,622	2.30
- Italy	7,148	2.08	50,336	1.59
- Luxembourg	458	0.13	5,107	0.16
- Netherlands	19,732	5.75	206,729	6.53
- Poland	1,877	0.55	12,636	0.40
- Portugal	2,163	0.63	8,619	0.27
- United Kingdom	100,028	29.15	824,578	26.07
- Czech Republic	880	0.26	5,671	0.18
- Sweden	41,626	12.13	379,812	12.01
- Other EU countries	3,068	0.89	22,937	0.73
Norway	27,906	8.13	328,106	10.37
Other european countries	10,629	3.10	81,749	2.58
United States of America	2,621	0.76	11,775	0.37
Rest of America	4,580	1.33	40,936	1.29
African countries	2,013	0.59	7,480	0.24
Other countries	9,315	2.71	44,110	1.39

**Tourist Accommodation Occupancy Survey  
Campsite Occupancy Survey (COS)  
February 2013**

Provisional data

**1. Travellers, overnight stays and average stay by category of establishment**

Category	Travellers			Overnight stays			Average stay
	Total	Residents in Spain	Residents abroad	Total	Residents in Spain	Residents abroad	
TOTAL	102,349	65,266	37,082	849,951	176,065	673,887	8.30
Luxury and first-class	42,543	23,314	19,229	394,315	72,484	321,830	9.27
Second-class	50,729	34,637	16,092	429,270	87,879	341,391	8.46
Third-class	9,077	7,315	1,762	26,367	15,701	10,666	2.90
Interannual rate	0.28	-5.75	13.01	-0.76	-6.62	0.89	-1.04
Cumulative interannual rate	-2.44	-9.59	11.36	-0.74	-6.73	0.89	1.74

**2. Open establishments, capacity, occupancy and number of staff by category of establishments**

Category	Estimated open establishments	Capacity		Occupied pitches	Occupancy rate per pitch	Weekend occupancy rate	Employed personnel
		Estimated bedplaces	Estimated pitches				
TOTAL	452	274,612	86,633	872,048	35.95	36.81	2,622
Luxury and first-class	126	115,063	35,815	355,414	35.44	36.34	1,160
Second-class	251	139,429	44,390	452,672	36.42	36.51	1,250
Third-class	75	20,120	6,427	63,962	35.54	40.61	212
Interannual rate	-1.44	-3.79	-3.64	-5.05	2.06	-0.68	-2.61
Cumulative interannual rate	-0.78	-2.92	-2.52	-3.83	0.47	-1.76	-2.63

**3. Travellers, overnight stays and average stay by Autonomous Cities and Communities**

Autonomous cities and communities	Travellers			Overnight stays			Average stay
	Total	Residents in Spain	Residents abroad	Total	Residents in Spain	Residents abroad	
TOTAL	102,349	65,266	37,082	849,951	176,065	673,887	8.30
Andalucía	22,591	9,282	13,309	178,956	31,188	147,768	7.92
Aragón	5,028	4,437	591	11,964	11,049	915	2.38
Asturias, Principado de	481	419	62	941	844	97	1.96
Balears, Illes	-	-	-	-	-	-	-
Canarias	1,166	998	168	8,021	2,730	5,291	6.88
Cantabria	339	339	-	566	566	-	1.67
Castilla y León	2,517	1,040	1,477	3,923	2,058	1,865	1.56
Castilla - La Mancha	917	663	254	1,625	1,231	394	1.77
Cataluña	27,133	24,422	2,711	76,570	53,404	23,166	2.82
Comunitat Valenciana	24,527	10,891	13,636	423,942	37,637	386,305	17.28
Extremadura	1,165	604	561	1,945	1,123	822	1.67
Galicia	188	145	42	336	225	111	1.79
Madrid, Comunidad de	7,224	6,208	1,016	20,155	17,241	2,914	2.79
Murcia, Región de	4,297	1,677	2,620	110,269	7,120	103,148	25.66
Navarra, Comunidad Foral de	1,893	1,795	97	4,510	4,384	126	2.38
País Vasco	1,252	1,023	229	3,061	2,671	390	2.44
Rioja, La	1,630	1,322	308	3,169	2,593	576	1.94
Ceuta	-	-	-	-	-	-	-
Melilla	-	-	-	-	-	-	-

#### 4. Open establishments, capacity, occupancy and number of staff by autonomous cities and communities

Autonomous cities and communities	Estimated open establishments	Capacity		Occupied pitches	Occupancy rate per pitch	Weekend occupancy rate	Employed personnel
		Estimated bedplaces	Estimated pitches				
TOTAL	452	274,612	86,633	872,048	35.95	36.81	2,622
Andalucía	104	59,248	19,127	132,155	24.68	25.10	589
Aragón	38	16,355	4,884	30,685	22.44	23.74	167
Asturias, Principado de	7	4,038	1,221	5,244	15.34	23.23	19
Balears, Illes	-	-	-	-	-	-	-
Canarias	5	3,704	1,245	6,418	18.41	22.09	22
Cantabria	7	2,952	926	11,727	45.21	45.43	17
Castilla y León	26	9,430	2,900	11,329	13.95	14.15	63
Castilla - La Mancha	14	4,539	1,375	11,756	30.53	31.27	35
Cataluña	76	54,110	16,579	155,276	33.45	37.22	469
Comunitat Valenciana	83	61,487	19,343	297,250	54.88	54.86	670
Extremadura	7	2,683	897	4,762	18.97	20.79	41
Galicia	18	5,173	1,724	3,781	7.83	7.91	57
Madrid, Comunidad de	20	17,671	5,938	76,490	46.01	44.37	176
Murcia, Región de	18	14,232	4,725	63,991	48.37	48.01	138
Navarra, Comunidad Foral de	12	6,887	1,844	13,511	26.16	25.51	69
País Vasco	11	5,762	1,813	12,248	24.12	31.61	41
Rioja, La	7	6,342	2,091	35,424	60.49	60.75	49
Ceuta	-	-	-	-	-	-	-
Melilla	-	-	-	-	-	-	-

#### 5. Travellers and overnight stays, average stay, capacity, occupancy and number of staff by provinces with the greatest number of overnight stays\*

Provinces	Travellers		Overnight stays		Average stay	Estimated open establishments	Estimated pitches	Occupancy rate per pitch	Employed personnel
	Residents in Spain	Residents abroad	Residents in Spain	Residents abroad					
	Spain		Spain						
Alicante\Alacant	2,045	7,473	12,650	265,797	28.00	31	8,873	66.94	330
Castellón\Castelló	2,833	4,669	11,355	87,658	13.20	29	5,687	44.82	182
Málaga	1,282	4,921	7,850	74,144	13.22	27	4,640	38.17	155
Valencia\València	6,012	1,495	13,632	32,850	6.19	23	4,782	44.50	157
Barcelona	11,646	1,524	24,838	18,568	3.30	22	6,137	28.54	196
Almería	765	1,962	6,721	34,676	15.18	19	2,659	32.47	90
Cádiz	1,479	2,291	3,579	17,409	5.57	13	3,151	21.83	98
Granada	1,950	2,014	3,682	14,437	4.57	21	2,554	17.21	99
Girona	6,150	342	13,607	1,883	2.39	20	3,684	31.41	108
Huelva	2,298	637	6,502	4,916	3.89	7	3,917	17.02	74
Lleida	4,254	15	10,818	187	2.58	20	3,391	47.64	76
Tarragona	2,373	830	4,141	2,528	2.08	14	3,367	30.33	88
Huesca	3,142	9	6,523	79	2.10	26	3,649	25.04	131
Córdoba	1,027	586	2,040	968	1.86	6	1,037	16.35	30
Teruel	1,164	48	2,574	227	2.31	8	797	9.03	17

\* Provinces belonging to uniprovincial Autonomous Communities have not been included because they are reflected in previous tables.

**6. Travellers, overnight stays, average stay, open establishments, capacity, occupancy and number of staff from tourist areas with the greatest number of overnight stays**

Tourist areas	Travellers		Overnight stays		Average stay	Estimated open establishments	Estimated pitches	Occupancy rate per pitch	Employed personnel
	Residents in	Residents abroad	Residents in	Residents abroad					
	Spain		Spain						
Costa Blanca	1,321	5,268	10,445	231,962	28.00	25	6,764	73.29	310
Costa Cálida	845	2,208	3,749	93,662	28.00	10	3,939	49.48	118
Costa de Castellón	1,698	4,383	9,416	86,721	15.81	25	5,365	44.84	171
Costa del Sol	642	3,628	6,732	71,108	18.23	13	3,326	48.94	116
Costa Valencia	2,294	1,631	5,730	33,251	9.93	10	3,052	47.19	103
Costa de Almería	633	1,922	6,427	31,972	15.03	13	2,205	33.82	69
Costa Barcelona	6,159	1,516	13,302	18,479	4.14	7	4,404	17.86	123
Pirineus	12,580	51	29,679	72	2.36	37	5,440	47.02	148
Costa de la Luz (Cádiz)	1,016	1,776	2,547	16,010	6.65	9	2,577	21.56	81
Costa Tropical	368	724	1,208	10,158	10.41	7	1,195	24.98	36
Costa de la Luz (Huelva)	798	603	3,759	3,577	5.24	4	3,399	12.79	54
Pirineo Aragonés	3,033	9	6,414	79	2.13	23	3,446	25.36	127
P. N. Los Alcornocales	513	903	1,271	3,932	3.67	5	1,018	25.17	29
Costa Daurada	2,156	482	3,634	1,515	1.95	9	2,540	36.36	64
Parque Natural Doñana	783	367	3,608	1,349	4.31	4	2,672	11.24	44

**7. Travellers, overnight stays, average stay, open establishments, capacity, occupancy and number of staff from tourist sites with the greatest number at overnights stays**

Tourist sites	Travellers		Overnight stays		Average stay	Estimated open establishments	Estimated pitches	Occupancy rate per pitch	Employed personnel
	Residents in	Residents abroad	Residents in	Residents abroad					
	Spain		Spain						
Benidorm	286	2,045	3,775	130,022	28.00	9	3,797	72.17	114
Cartagena	240	1,219	1,692	55,724	28.00	3	2,537	41.41	64
Marbella	246	1,271	5,210	32,019	24.54	3	1,310	49.54	50
Mazarrón	199	684	1,231	30,839	28.00	3	874	70.44	35
Oliva	110	934	635	25,832	25.35	5	1,253	39.47	68
Vélez-Málaga	71	816	733	23,575	27.41	4	806	56.44	36
Benicasim/Benicàssim	158	1,164	845	21,989	17.27	3	833	58.17	34
Peñíscola	265	1,382	1,477	18,721	12.26	7	1,146	43.77	40
Campello, El	83	407	1,918	8,040	20.32	3	301	69.85	15
Motril	341	560	885	7,406	9.20	3	723	32.21	24
Fortuna	140	279	715	6,684	17.66	3	199	82.00	5
Tarifa	116	687	454	3,070	4.39	3	679	19.48	21

## 8. Travellers and overnight stays by countries of residence

Countries	Travellers		Overnight stays	
	Total	%	Total	%
TOTAL	102,349	100.00	849,951	100.00
Residents in Spain	65,266	63.77	176,065	20.71
Residents abroad	37,082	36.23	673,887	79.29
TOTAL residents abroad	37,082	100.00	673,887	100.00
TOTAL residents in E.U. (excluding Spain)	35,276	95.13	648,812	96.28
- Germany	7,046	19.00	177,769	26.38
- Austria	304	0.82	5,164	0.77
- Belgium	1,464	3.95	30,707	4.56
- Denmark	703	1.89	14,315	2.12
- Finland	385	1.04	8,318	1.23
- France	5,033	13.57	42,266	6.27
- Greece	-	-	57	0.01
- Ireland	303	0.82	3,481	0.52
- Italy	255	0.69	3,380	0.50
- Luxembourg	97	0.26	1,243	0.18
- Netherlands	6,895	18.59	106,088	15.74
- Poland	15	0.04	239	0.04
- Portugal	643	1.73	1,460	0.22
- United Kingdom	10,659	28.75	230,266	34.17
- Czech Republic	208	0.56	578	0.09
- Sweden	1,057	2.85	22,557	3.35
- Other EU countries	208	0.56	925	0.14
Other European countries	1,373	3.70	22,968	3.41
United States of America	64	0.17	150	0.02
Rest of America	77	0.21	529	0.08
African countries	14	0.04	43	0.01
Other countries	279	0.75	1,385	0.21

**Tourist accommodation occupancy survey:  
(Rural tourist accommodation)**

**February 2013**

Provisional data

**1. Number of travellers, overnight stays and average stay by Autonomous Cities and Communities**

Autonomous Communities	Number of travellers			Number of overnight stays			Average stay
	Total	Residents In Spain	Residents abroad	Total	Residents In Spain	Residents abroad	
<b>TOTAL<sup>1</sup></b>	116,437	105,098	11,339	255,779	198,204	57,575	2.20
Andalucía	9,290	7,843	1,447	25,815	16,419	9,396	2.78
Aragón	6,146	5,852	294	14,245	12,602	1,643	2.32
Asturias, Principado de	4,116	4,107	9	8,158	8,146	12	1.98
Balears, Illes	2,679	862	1,818	10,200	1,380	8,820	3.81
Canarias	6,279	1,265	5,014	33,699	4,071	29,628	5.37
Cantabria	5,550	5,364	187	10,052	9,643	409	1.81
Castilla y León	27,490	26,583	907	52,800	50,271	2,528	1.92
Castilla-La Mancha	7,747	7,650	97	14,837	14,045	792	1.92
Cataluña	13,322	13,017	305	25,753	25,017	736	1.93
Comunitat Valenciana	4,543	4,435	109	8,403	7,888	516	1.85
Extremadura	5,577	5,290	288	10,543	9,803	740	1.89
Galicia	4,776	4,658	118	6,771	6,564	207	1.42
Madrid, Comunidad de	8,528	8,348	180	12,502	12,029	473	1.47
Murcia, Región de <sup>1</sup>	1,414	1,362	52	2,720	2,634	86	1.92
Navarra, Comunidad Foral de	3,623	3,527	96	7,996	7,612	383	2.21
País Vasco	4,174	3,781	392	8,982	7,832	1,150	2.15
Rioja, La	1,181	1,154	27	2,303	2,248	55	1.95
Ceuta	-	-	-	-	-	-	-
Melilla	-	-	-	-	-	-	-
Interannual rate	-12.31	-13.15	-3.73	-17.18	-18.08	-13.94	-5.55
Cumulative interannual rate	-13.57	-15.25	5.34	-17.40	-19.72	-8.24	-4.43

**2. Open rural tourist accommodation and estimated vacancies, levels of occupancy and personnel employed by Autonomous Cities and Communities**

Autonomous Communities	Nº of rural open estimated accom.	Nº of vacancies	Level of occupancy			Employed personnel
			By vacancies	By vacancies at week end	By rooms	
<b>TOTAL<sup>1</sup></b>	14,212	128,255	7.12	16.54	8.77	19,489
Andalucía	1,367	11,563	7.97	14.70	12.21	1,841
Aragón	1,068	8,313	6.11	14.79	6.93	1,197
Asturias, Principado de	1,109	10,233	2.85	6.77	4.36	1,407
Balears, Illes	98	1,695	21.49	25.01	24.70	340
Canarias	638	3,890	30.90	31.96	44.68	956
Cantabria	260	4,378	8.19	21.74	9.59	354
Castilla y León	3,297	28,500	6.61	18.22	7.49	4,612
Castilla-La Mancha	1,394	11,370	4.66	13.83	5.56	1,920
Cataluña	1,616	12,923	7.11	22.43	7.96	2,115
Comunitat Valenciana	956	8,621	3.48	9.65	5.57	1,320
Extremadura	501	5,866	6.42	12.79	7.84	696
Galicia	473	5,826	4.15	11.01	4.38	732
Madrid, Comunidad de	244	4,218	10.57	26.75	12.25	559
Murcia, Región de <sup>1</sup>	110	1,680	5.78	16.51	6.55	153
Navarra, Comunidad Foral de	636	4,634	6.15	18.20	6.60	758
País Vasco	349	3,655	8.77	15.82	10.78	425
Rioja, La	95	890	9.19	28.69	8.25	104
Ceuta	-	-	-	-	-	-
Melilla	-	-	-	-	-	-
Interannual rate	-0.75	-1.37	-12.91	-5.99	-13.22	-1.35
Cumulative interannual rate	-1.73	-2.37	-13.58	-3.51	-15.12	-0.67

<sup>1</sup> Due to the updating in the directory of establishments carried out in Región de Murcia, the data to be published since January 2013 (for Navarra and the national total) are not directly comparable with the data published last year, therefore, data link coefficients have been calculated to allow the comparison of data between different years. These coefficients are available in INE website ([www.ine.es](http://www.ine.es))

### 3. Number of travellers, overnight stays and average stay of provinces with the greatest number of overnight stays<sup>2</sup>

Provinces	Number of travellers			Number of overnight stays			Average stay
	Total	Residents In Spain	Residents abroad	Total	Residents In Spain	Residents abroad	
Santa Cruz de Tenerife	4,265	841	3,424	25,346	3,084	22,261	5.94
Málaga	2,075	1,101	973	10,611	2,728	7,884	5.11
Segovia	5,776	5,735	41	10,449	10,384	66	1.81
Ávila	5,384	5,279	106	10,211	9,988	222	1.90
Girona	5,018	4,896	122	9,411	9,191	219	1.88
Salamanca	4,392	3,959	433	9,192	7,522	1,670	2.09
Cáceres	4,642	4,380	262	8,524	7,856	668	1.84
Palmas, Las	2,014	424	1,590	8,353	987	7,366	4.15
Huesca	2,628	2,430	199	7,683	6,281	1,403	2.92
Lleida	3,642	3,598	44	7,619	7,515	104	2.09
Barcelona	3,919	3,805	114	7,359	7,057	303	1.88
León	2,539	2,454	84	5,459	5,373	86	2.15
Cuenca	2,353	2,325	28	4,895	4,229	666	2.08
Burgos	2,453	2,375	78	4,867	4,751	117	1.98
Gipuzkoa	2,227	1,978	249	4,749	4,002	747	2.13

### 4. Open rural tourist accommodation and estimated vacancies degrees of occupancy and personnel employed in provinces with the highest number of overnight stays<sup>2</sup>

Provinces	Nº of rural open estimated accommodation	Nº of vacancies	Level of occupancy			Employed personnel
			By vacancies	By vacancies at the weekend	By rooms	
Santa Cruz de Tenerife	519	2,933	30.86	32.61	45.89	768
Málaga	532	3,552	10.67	14.49	19.68	619
Segovia	381	3,549	10.51	31.17	12.10	536
Ávila	770	5,495	6.63	19.53	7.31	1,213
Girona	531	4,316	7.78	25.12	8.34	702
Salamanca	497	3,951	8.31	19.38	9.06	682
Cáceres	438	5,139	5.92	11.91	7.37	597
Palmas, Las	119	957	31.02	29.98	40.82	187
Huesca	567	4,281	6.40	14.08	7.47	646
Lleida	488	3,510	7.75	22.62	9.48	581
Barcelona	412	3,501	7.51	25.14	7.80	626
León	439	3,781	5.15	12.72	6.08	613
Cuenca	295	3,048	5.73	16.06	6.27	409
Burgos	362	3,679	4.72	14.35	5.22	419
Gipuzkoa	166	1,805	9.39	16.94	11.30	207

<sup>2</sup> Provinces belonging to uniprovincial Autonomous Communities have not been included because they are reflected in previous tables.

### 5. Number of travellers, overnight stays, average stay, estimated vacancies, levels of occupancy and personnel employed in areas with the highest number of overnight stays

Areas	Number of travellers		Number of overnight stays		Average stay	Capacity		Level of occupancy		
	Residents In Spain	Residents abroad	Residents In Spain	Residents abroad		Nº of rural open esti-mated accom.	Nº of vacancies	By vacancies	By vacancies at week end	By rooms
	Isla de Tenerife	558	2,186	1,331		11,890	4.82	120	1,188	39.76
Pirineus	5,290	63	10,857	175	2.06	668	4,835	8.14	25.85	8.48
P.Nacional Teide	379	1,713	823	9,774	5.07	81	864	43.82	44.29	55.41
Isla de Mallorca	703	1,759	1,033	8,671	3.94	88	1,477	23.46	26.32	26.69
Isla de La Palma	177	830	1,512	7,948	9.40	277	1,169	28.90	31.87	48.96
Pirineo Navarro	3,637	-	7,864	-	2.16	566	4,125	6.79	20.43	7.30
Pirineo Aragonés	2,489	114	5,730	288	2.31	504	3,867	5.55	13.82	5.92
Isla Gran Canaria	297	1,064	648	4,851	4.04	93	604	32.32	32.80	44.72
P.Nacional Taburiente	103	552	1,076	4,306	8.22	157	689	27.89	33.06	47.62
Costa Brava	2,673	103	4,663	148	1.73	322	2,784	6.17	20.54	6.99
Catalunya Central	1,961	114	3,097	303	1.64	256	2,111	5.75	19.23	6.48
Terres de Lleida	1,385	-	3,097	-	2.24	112	931	11.88	33.84	15.07
Pirineo Vasco	1,154	72	2,485	515	2.45	121	1,260	8.50	16.00	11.01
Isla de Lanzarote	79	447	221	2,180	4.56	18	281	30.41	26.40	37.75
Isla de La Gomera	90	372	194	2,115	5.00	71	374	22.06	24.75	36.28

### 6. Number of travellers, overnight stays, average stay, estimated vacancies, levels of occupancy and personnel employed class per rural house per Autonomous Cities and Communities<sup>3</sup>

Autonomous Communities	Number of travellers		Number of overnight stays		Average stay	Capacity		Level of occupancy		Employed personnel
	Residents In Spain	Residents abroad	Residents In Spain	Residents abroad		Nº of rural open esti-mated accom.	Nº of vacancies	By vacancies	By vacancies at week end	
	TOTAL	64,315	5,962	128,888		36,118	2.35	11,789	89,629	
Andalucía	7,053	1,290	14,920	8,890	2.85	1,332	10,734	7.92	14.58	1,744
Aragón	4,422	188	8,911	1,351	2.23	779	6,048	6.05	14.49	876
Asturias, Principado de	1,992	-	4,120	-	2.07	716	4,384	3.36	7.27	856
Balears, Illes	367	649	653	2,571	3.17	35	468	24.58	27.38	88
Canarias	582	2,560	2,766	18,807	6.86	607	3,030	25.41	27.15	808
Cantabria	1,080	12	2,386	62	2.24	108	1,501	5.82	15.15	137
Castilla y León	14,464	372	30,225	1,597	2.14	2,809	18,736	6.06	18.00	3,565
Castilla-La Mancha	7,192	97	13,233	792	1.92	1,363	10,860	4.61	13.65	1,862
Cataluña	10,270	148	19,607	344	1.92	1,376	10,463	6.80	21.31	1,772
Comunitat Valenciana	3,557	103	6,737	348	1.94	927	7,090	3.57	9.86	1,235
Extremadura	2,053	143	3,742	299	1.84	313	2,987	4.83	12.87	422
Galicia	3,009	61	4,271	125	1.43	336	3,893	4.03	11.09	486
Madrid, Comunidad de	739	6	1,365	6	1.84	67	608	8.04	27.56	77
Murcia, Región de	968	12	2,087	12	2.14	102	1,440	5.20	16.21	125
Navarra, Comunidad Foral de	3,527	96	7,612	383	2.21	636	4,634	6.15	18.20	758
País Vasco	1,885	198	4,006	475	2.15	188	1,861	8.60	15.85	232
Rioja, La	1,154	27	2,248	55	1.95	95	890	9.19	28.69	104
Ceuta	-	-	-	-	-	-	-	-	-	-
Melilla	-	-	-	-	-	-	-	-	-	-

<sup>3</sup> To facilitate the comparability between data from different Autonomous Communities (and because of the different regulation and different characteristics), a group called rural house has been created, with those accommodations with similar typology (location, capacity, etc...).

The variables included in the previous table have been estimated with that type of establishments.

The variables shown in the table have been estimated with the type of accommodation under rural tourist accommodation.

## 7. Travellers and overnight stays by country of residence

Results by countries	Travellers		Overnight stays	
	Total	%	Total	%
TOTAL	116,437	100.00	255,779	100.00
Residents Spain	105,098	90.26	198,204	77.49
Residents abroad	11,339	9.74	57,575	22.51
Total Residents abroad	11,339	100.00	57,575	100.00
Total Residents in UE (excluding Spain)	10,292	90.77	54,394	94.47
- Germany	4,004	35.31	26,542	46.10
- Belgium	304	2.68	1,159	2.01
- France	1,235	10.89	3,369	5.85
- Italy	436	3.85	1,420	2.47
- Netherlands	1,059	9.34	7,075	12.29
- Portugal	769	6.78	2,601	4.52
- United Kingdom	1,988	17.53	8,955	15.55
Sweden	379	3.34	1,378	2.39
Other European countries	747	6.59	4,032	7.00
United States of America	142	1.25	291	0.50
Other countries	276	2.44	755	1.31

## HOLIDAY DWELLING PRICE INDEX (HDPI)

February 2013

Provisional data

### National general index and breakdown by rates

	Index	Interannual variation rate
TOTAL	106.82	-0.29
Normal	107.14	-0.87
Weekend	116.09	0.35
Tour-operators and travel agencies	106.79	0.00

### National general index and breakdown by modalities

	Index	Interannual variation rate
TOTAL	106.82	-0.29
Studio	110.37	-1.70
Dwellings 2/4 bedplaces	104.42	-0.29
Dwellings 4/6 bedplaces	116.36	1.28

## Tourist Campsite Price Index (TCSPI). 2002 Base February 2013

Provisional data

### National general index and breakdown by rates

	Index	Interannual variation rate
TOTAL	144.04	1.16
Normal rate	138.08	-0.44
Special rate for stays up to one month	141.32	1.18
Special rate for stays longer than one month	148.09	3.06

### National general index and breakdown by categories

	Index	Interannual variation rate
TOTAL	144.04	1.16
Luxury and first	151.65	1.84
Second	140.61	0.64
Third	133.67	1.60

## Rural Tourism Accommodation Price Index (RTAPI)

February 2013

Provisional data

### General Autonomous Cities and Communities and national indices

	Index	Variation Rate interannual
<b>TOTAL</b>	<b>128.13</b>	<b>-1.55</b>
Andalucía	141.37	-2.17
Aragón	148.69	-0.65
Asturias, Principado de	134.90	-0.87
Balears, Illes	106.75	-3.12
Canarias	113.87	-1.33
Cantabria	136.81	-0.51
Castilla y León	133.15	-2.38
Castilla - La Mancha	117.63	-5.48
Cataluña	131.52	2.01
Comunitat Valenciana	129.46	0.68
Extremadura	108.75	-4.98
Galicia	130.93	-2.94
Madrid, Comunidad de	130.45	-1.27
Murcia, Región de	134.20	6.44
Navarra, Comunidad Foral de	175.01	3.34
País Vasco	139.13	0.07
Rioja, La	135.52	-5.15
Ceuta	-	-
Melilla	-	-

### National general index and breakdown by rates

	Index	Variation Rate interannual
<b>TOTAL</b>	<b>128.13</b>	<b>-1.55</b>
Normal	127.28	-2.14
Weekend	124.77	-1.31

### National general index and breakdown by rent modality

	Index	Variation Rate interannual
<b>TOTAL</b>	<b>128.13</b>	<b>-1.55</b>
Shared use (in case of per room rent modality)	115.59	-3.03
Full use (rent of entire dwelling)	135.03	-0.76