

31 May 2018

Non-hotel Tourist Accommodation Occupancy Survey
April 2018. *Provisional data*

**Overnight stays in non-hotel tourist accommodation¹ decrease
18.5% in April, as compared to the same month of 2017**

Overnight stays in non-hotel tourist accommodation (apartments, tourist campsites, rural tourism accommodation and hostels) exceeded 7.9 million in April, 18.5% less than in the same month of 2017. Overnight stays by residents decreased by 30.8% and those by non-residents did so by 8.8%. The average stay stood at 4.3 overnight stays per traveller.

During the first four months of 2018, overnight stays decreased by 3.3% as compared with the same period of the previous year.

As in 2018 Holy Week was celebrated between March and April and in 2017 in April, it is convenient to analyse the **aggregate period March-April**. In that period, overnight stays decreased by 4.2% as compared with the same two-month period of 2017 (overnight stays of residents decreased by 3.6% and those of non-residents did so by 4.5%).

Travellers and overnight stays in collective non-hotel tourist accommodation during the month of April were:

April 2018	Arrivals	Overnight stays
Residents	988,665	2,984,141
EU Residents (excluding Spain)	735,062	4,412,686
Rest of the world	125,662	560,910
TOTAL	1,849,389	7,957,737

Holiday dwellings

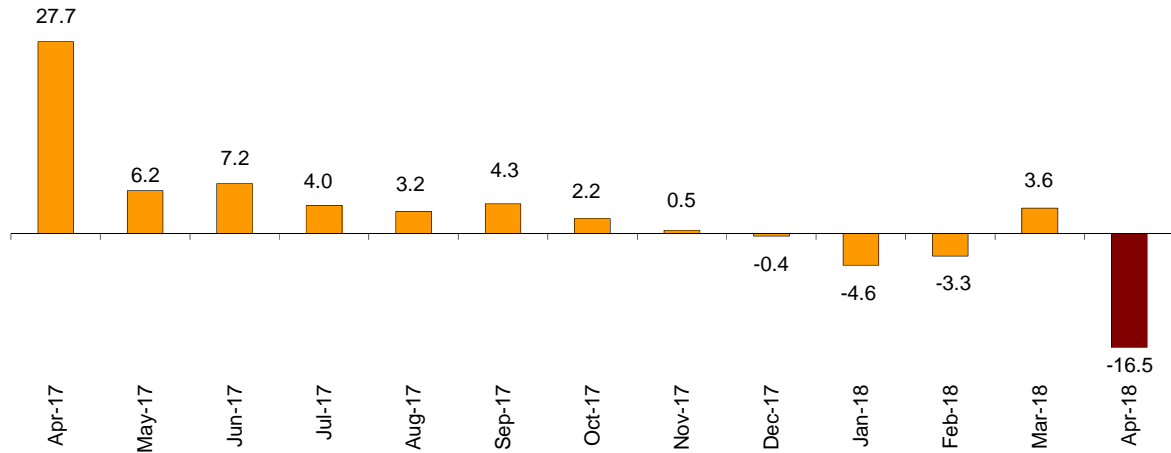
Overnight stays in holiday dwellings decreased by 16.5% in April. Resident overnight stays decreased by 31.3%, and non-resident overnight stays did so by 10.9%. During the aggregate **March-April** period, the number of overnight stays decreased by 7.4% as compared with the same period in 2017. Resident overnight stays fell by 8.0%, and those of non-residents by 7.2%.

The average stay increased by 2.0% as compared with April 2017, standing at 5.2 overnight stays per traveller.

In April, 32.7% of the bed-places available for holiday dwellings were occupied, 10.8% less than in the same month of 2017. The weekend occupancy rate by bed-places stood at 35.9%, with a decrease of 11.6%.

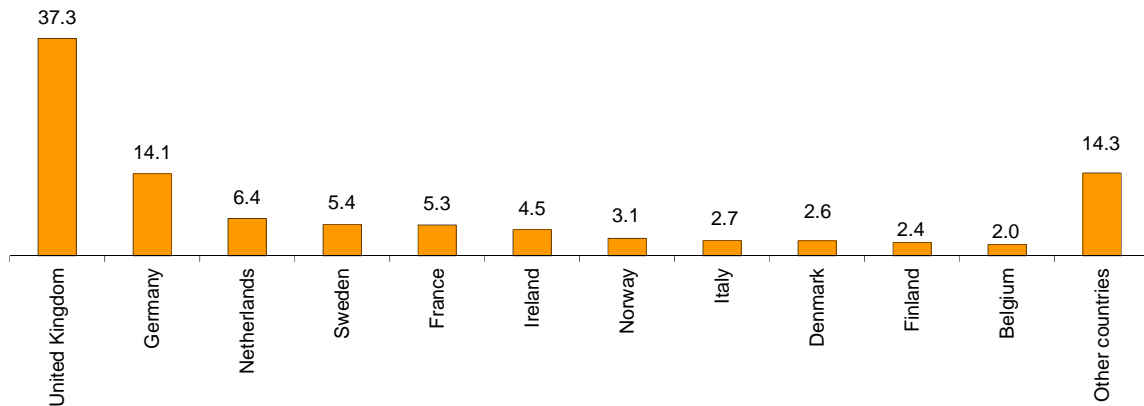
¹ Given that in 2018 Holy Week is celebrated between March and April, and in 2017 it took place in April, it is convenient to analyse both months together.

Annual variation rates for overnight stays in holiday dwellings in %



Non-resident overnight stays in holiday dwellings represented 77.5% of the total. The United Kingdom was the main country of origin, with more than 1.3 million overnight stays, that is, 11.0% less than in April 2017. The following country of origin was Germany, with 510,773 overnight stays, 7.1% less.

Distribution of non-resident overnight stays by main country of residence



Canarias was the preferred holiday dwelling destination, with 2.2 million overnight stays and a decrease of 16.4% as compared with April 2017. Comunidad de Madrid reached the highest occupancy rate, with 74.3% of holiday dwellings offered.

By tourist areas, the island of Tenerife was the preferred destination, with 736,447 overnight stays. Costa Barcelona reached the highest occupancy rate, with 83.2% of holiday dwellings offered.

The tourist sites with the greatest number of overnight stays in April were San Bartolomé de Tirajana, Arona and Tias.

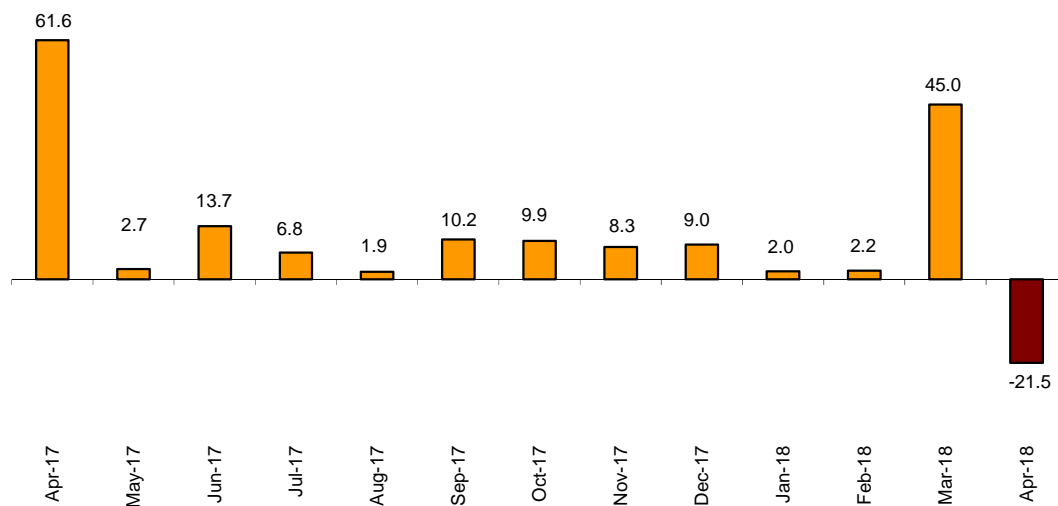
Tourist campsites

Overnight stays at tourist campsites registered a decrease of 21.5% in April as compared with the same month of the previous year. Resident overnight stays decreased by 32.7%, and non-resident overnight stays did so by 3.3%. During the **March-April** period, overnight stays decreased by 0.6%.

During the month of April, 31.7% of the offered pitches were occupied, 9.4% less than in the same month of 2017. The weekend occupancy rate by pitch reached 33.8%, with an annual decrease of 12.9%.

47.0% of overnight stays on tourist campsites were made by non-residents. The United Kingdom was the main country of origin with 28.4% of overnight stays by non-residents, 6.1% more than in April 2017.

Annual variation rates for overnight stays in campsites in %



Cataluña was the preferred destination for tourist campsites, with 897,434 overnight stays, representing an annual decrease of 26.0%. La Rioja reached the highest occupancy rate, with 61.5% of the pitches offered.

By tourist area, Costa Daurada was the preferred destination for camping, with 366,566 overnight stays. Costa Blanca reached the highest occupancy rate, with 70.0% of pitches offered.

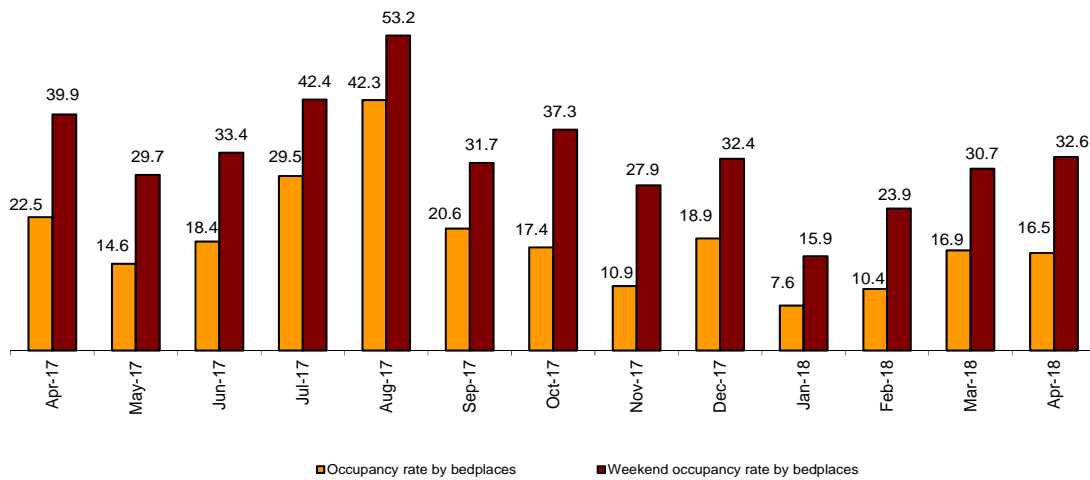
The tourist sites with the highest number of overnight stays were Benidorm, Mont-Roig Del Camp and Tarragona.

Rural tourism accommodation

Overnight stays in rural tourism accommodation presented an annual decrease of 25.7% in April. Resident overnight stays decreased by 31.7%, and non-resident overnight stays did so by 3.1%. During the **March-April** period, overnight stays increased by 1.5%.

In rural tourism accommodation, 16.5% of the bed-places were occupied, that is, a 27.0% decrease as compared to April 2017. The weekend occupancy rate stood at 32.6%, with an annual decrease of 18.1%.

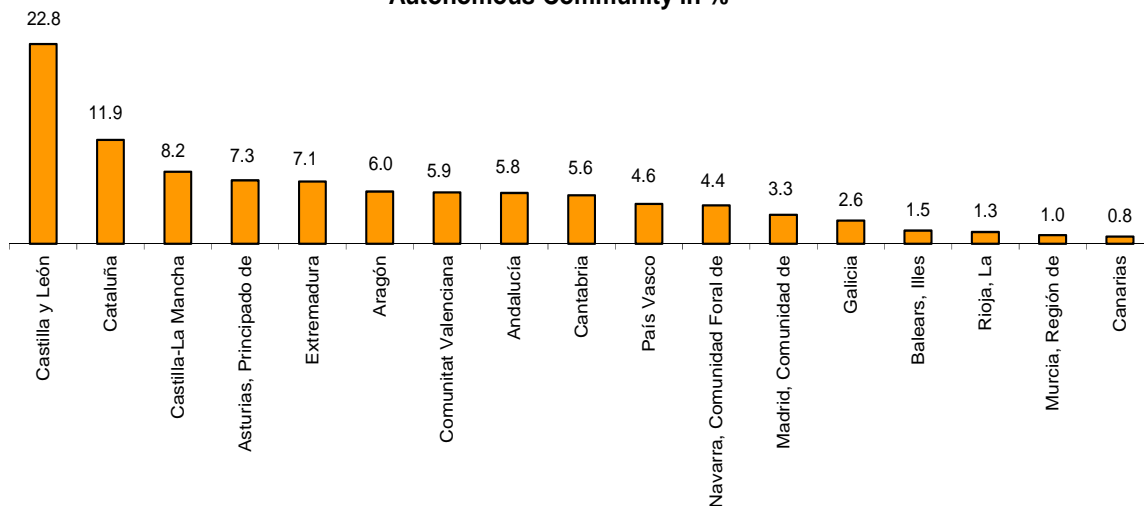
Occupancy rate and weekend occupancy rate per bed-places in rural tourism accommodation



By Autonomous Communities, Castilla y León was the preferred destination, with 143,345 overnight stays, 26.9% less than in April 2017. Illes Balears reached the highest occupancy rate, with 38.0% of the bed-places offered.

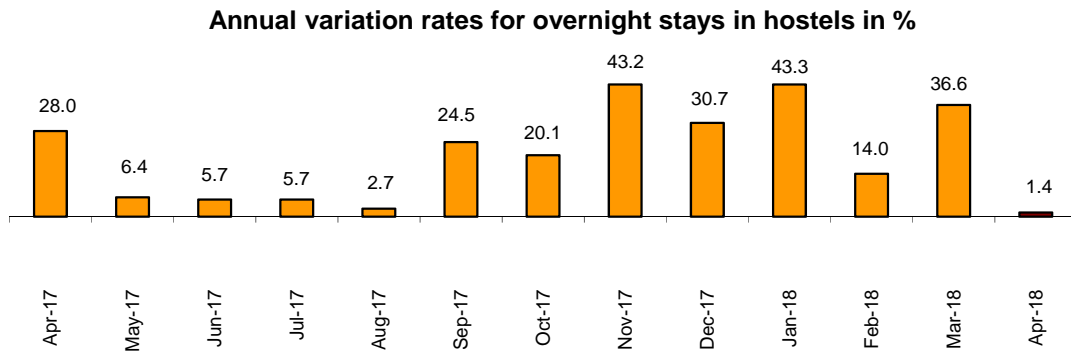
By tourist area, the island of Mallorca was the preferred destination, with 84,845 overnight stays. This island also reached the highest occupancy rate, with 39.0% of the bed-places offered.

Distribution of resident overnight stays in rural tourism accommodation by Autonomous Community in %

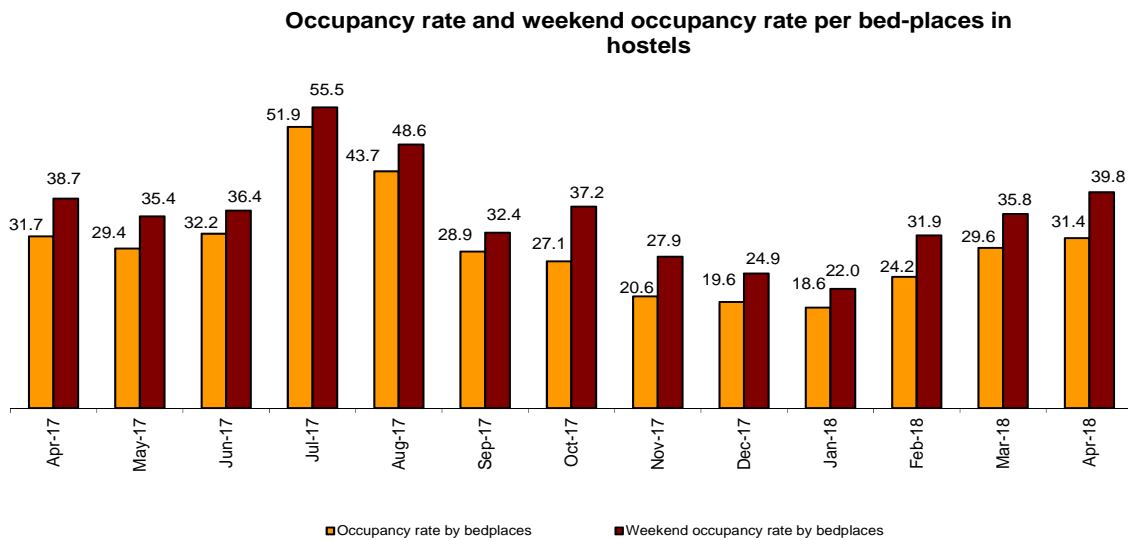


Youth Hostels

Overnight stays in hostels registered an annual increase of 1.4% in April. Overnight stays by residents dropped by 1.5%, whilst those by non-residents increased by 8.1%. During the **March-April** period, overnight stays increased 16.1%.



31.4% of the available bed-places were occupied, 1.1% less than in April 2017. The weekend occupancy rate reached 39.8%, with a 3.0% increase.



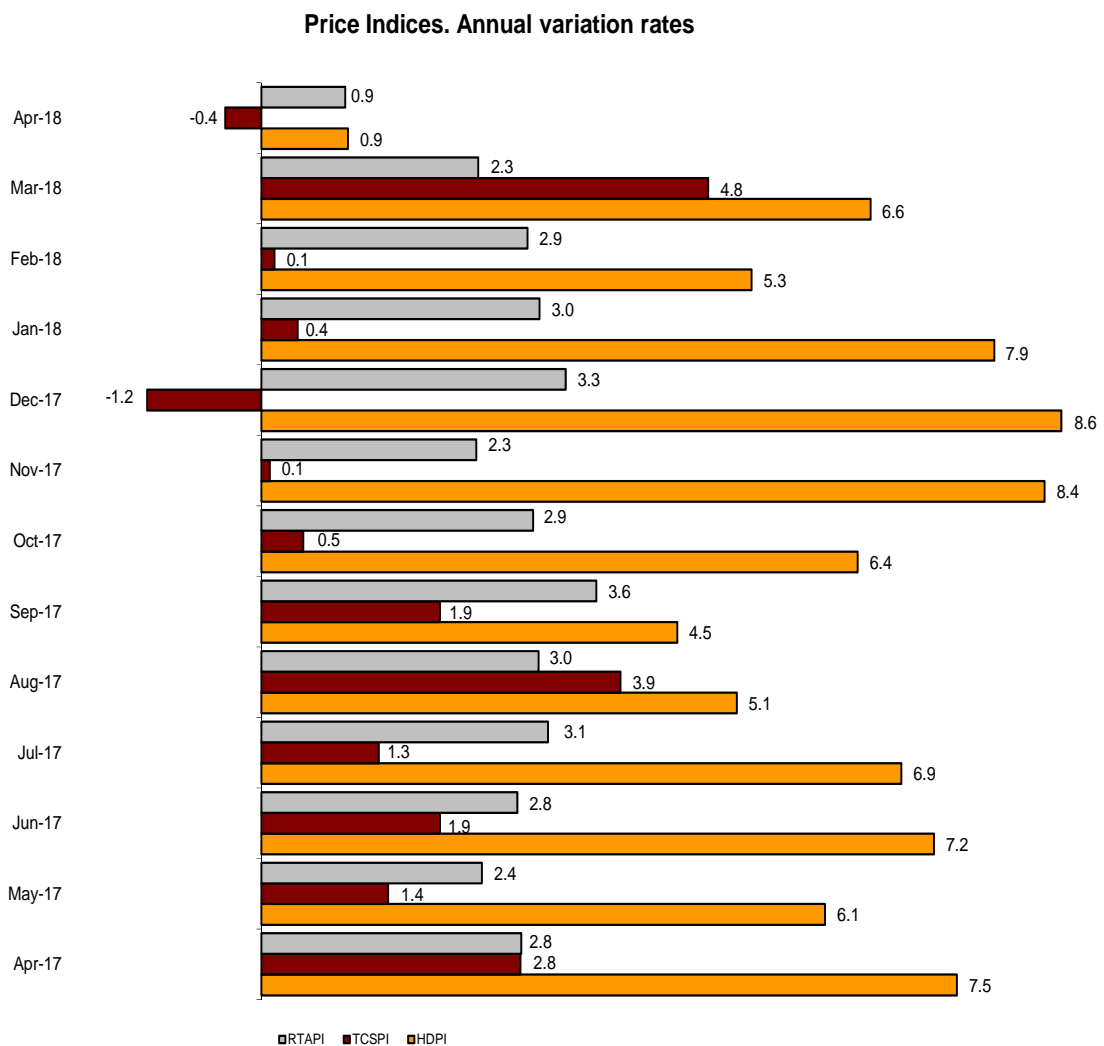
By Autonomous Community, Cataluña was the preferred destination, with 84,057 overnight stays, 17.3% less than in April 2017. Comunidad de Madrid reached the highest occupancy rate, with 56.7% of the bed-places offered.

Price indices

The Holiday Dwelling Price Index (HDPI) increased 0.9%, as compared to April 2017. The rate for *tour operators and travel agencies*, which carried the greatest weight in the weighting structure for this month (49.5%), increased by 1.7%.

The Tourist Campsite Price Index (TCPI) decreased by 0.4% in the annual rate. The *bungalow* rate, which carried the greatest weight in the weightings structure in April (38.1%), decreased by 1.0% as compared to the same month of 2017.

The Rural Tourism Accommodation Price Index (RTAPI) registered a 0.9% increase in April. The *weekend rate*, which accounted for 58.2% of the total weight, increased by 0.9% in the annual rate.



Evolution of travellers and overnight stays in all Spanish collective tourist accommodation

In April, overnight stays in Spanish collective tourist accommodation (hotels², holiday dwellings, tourist campsites, rural tourism accommodation and youth hostels) registered a 10.9% decrease in the annual rate. Resident overnight stays decreased by 18.6%, and non-resident overnight stays did so by 5.6%. During the **March-April** period, overnight stays decreased 2.3%.

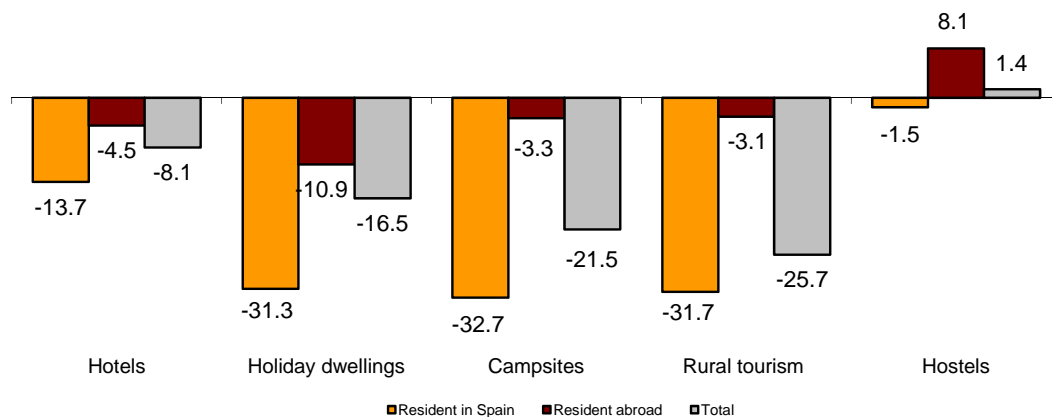
The average stay decreased 0.6%, standing at 3.2 overnight stays per traveller.

Travellers and overnight stays in collective tourist accommodation were:

April 2018	Holiday dwellings	Campsites	Rural T.	Hostels	Non-hotel	Hotels	Total
Arrivals	893,679	507,142	342,566	106,003	1,849,390	8,508,796	10,358,186
Residents	314,449	326,651	273,016	74,549	988,665	4,154,286	5,142,951
Non-residents	579,230	180,491	69,550	31,453	860,724	4,354,510	5,215,234
Overnight stays	4,677,423	2,221,883	812,974	245,459	7,957,739	25,309,572	33,267,311
Residents	1,052,049	1,178,609	587,864	165,619	2,984,141	9,279,771	12,263,912
Non-residents	3,625,373	1,043,274	225,110	79,839	4,973,596	16,029,802	21,003,398

Of the total overnight stays made in collective tourist accommodation, 76% corresponded to hotels and 24% to non-hotel tourist accommodation.

Annual variation rates for overnight stays in collective tourist accommodation in %



The main countries of origin for all types of regulated tourist accommodation were the United Kingdom (with 25.6% of the total number of non-resident overnight stays), Germany (19.5%) and France (9.6%).

Canarias was the preferred destination, with over 7.5 million overnight stays (11.2% less than in April 2017). It was followed by Cataluña, with 5.6 million overnight stays (and a 16.0% decrease) and Andalucía, with 5.6 million, (and an annual decrease of 8.7%).

For further information see **INEbase**: www.ine.es/en/ Twitter: [@es_ine](https://twitter.com/es_ine)

All press releases at: www.ine.es/en/prensa/prensa_en.htm

Press office: Telephone numbers: (+34) 91 583 93 63 /94 08 – gprensa@ine.es

Information Area: Telephone number: (+34) 91 583 91 00 – www.ine.es/infoine/?L=1

² The press release corresponding to Hotel Tourism Short-Term Trends was published on 23 May.

Tourist Accommodation Occupancy Survey (Holiday Dwellings)

April 2018

Provisional data

1. Travellers, overnight stays and average stay by Autonomous Cities and Communities

Autonomous Cities and Communities	Travellers			Overnight stays			Average stay
	Total	Residents in Spain	Residents abroad	Total	Residents in Spain	Residents abroad	
TOTAL	893,679	314,449	579,230	4,677,423	1,052,049	3,625,373	5.23
Andalucía	213,282	80,123	133,159	818,802	203,293	615,509	3.84
Aragón	19,136	16,939	2,197	48,138	40,572	7,565	2.52
Asturias, Principado de	3,649	3,242	407	9,046	8,488	558	2.48
Balears, Illes	50,602	4,532	46,070	282,971	17,326	265,645	5.59
Canarias	291,454	48,881	242,572	2,210,634	206,435	2,004,199	7.58
Cantabria	17,031	14,951	2,080	41,611	36,899	4,713	2.44
Castilla y León	16,609	14,816	1,793	37,591	33,630	3,961	2.26
Castilla - La Mancha	10,126	9,414	713	30,587	27,259	3,327	3.02
Cataluña	58,957	25,883	33,074	291,283	134,046	157,237	4.94
Comunitat Valenciana	124,921	45,897	79,024	608,025	182,065	425,961	4.87
Extremadura	7,819	6,495	1,324	13,922	11,724	2,199	1.78
Galicia	8,761	6,692	2,070	20,885	16,987	3,898	2.38
Madrid, Comunidad de	45,069	19,056	26,014	154,394	64,015	90,379	3.43
Murcia, Región de	8,358	5,137	3,221	47,995	27,686	20,309	5.74
Navarra, Comunidad Foral de	5,227	3,924	1,303	17,292	12,170	5,122	3.31
País Vasco	9,729	5,779	3,950	36,266	21,961	14,305	3.73
Rioja, La	2,949	2,689	261	7,982	7,493	488	2.71
Ceuta	-	-	-	-	-	-	-
Melilla	-	-	-	-	-	-	-
Annual rate	-18.07	-31.44	-8.36	-16.46	-31.26	-10.90	1.96
Cumulative annual rate	-4.38	-6.06	-3.50	-5.80	-6.44	-5.65	-1.49

2. Capacity, occupancy and number of staff by Autonomous Cities and Communities

Autonomous Cities and Communities	Capacity		Level of occupancy				Employed personnel
	Estimated bedplaces	Estimated Holiday dwelling	Per bedplaces	Per bedplaces at weekend	Per Holiday dwelling	Per Holiday dwelling at weekend	
TOTAL	475,383	124,853	32.66	35.9	50.99	54.73	26,139
Andalucía	80,422	20,188	33.79	38.73	50.43	56.28	4,603
Aragón	8,480	1,971	18.84	29.12	25.31	36.28	574
Asturias, Principado de	4,447	1,180	6.78	10.40	9.56	13.33	277
Balears, Illes	19,290	6,463	48.46	49.95	57.69	59.55	1,590
Canarias	148,829	45,807	49.26	50.26	69.55	71.17	11,432
Cantabria	6,308	1,619	21.91	28.11	32.77	41.92	422
Castilla y León	6,371	1,448	19.61	32.06	26.97	40.74	534
Castilla - La Mancha	5,478	1,322	18.59	31.85	29.49	44.18	420
Cataluña	45,659	10,304	21.30	23.46	35.73	38.09	1,268
Comunitat Valenciana	117,540	25,570	17.23	20.45	30.11	34.28	2,917
Extremadura	1,901	460	24.35	35.64	37.30	50.00	174
Galicia	3,862	1,020	17.92	22.09	30.56	35.42	271
Madrid, Comunidad de	9,470	3,576	54.13	59.04	74.26	77.12	580
Murcia, Región de	9,385	2,124	17.05	20.26	32.83	38.19	270
Navarra, Comunidad Foral de	2,325	427	24.72	33.04	44.69	51.82	474
País Vasco	4,039	1,031	29.88	39.34	48.00	57.96	226
Rioja, La	1,577	342	16.85	28.33	23.32	36.97	107
Ceuta	-	-	-	-	-	-	-
Melilla	-	-	-	-	-	-	-
Annual rate	-6.04	-2.24	-10.77	-11.62	-9.12	-9.71	-1.44
Cumulative annual rate	0.62	2.55	-6.16	-6.64	-6.95	-7.33	2.49

3. Travellers, overnight stays, capacity, occupancy, total number of staff with greater number of overnight stays *

Provinces	Travellers		Overnight stays			Capacity		Level of occupancy			Employed personnel
	Residents in Spain	Residents abroad	Residents in Spain	Residents abroad	Average stay	Estimated bed-places	Estimated holiday dwelling	Per bed-places	Per Holiday dwelling	Per Holiday dwelling at weekend	
Palmas, Las	27,862	156,391	104,868	1,304,975	7.65	95,182	29,215	49.06	70.72	72.08	7,214
Santa Cruz de Tenerife	21,019	86,182	101,567	699,224	7.47	53,647	16,592	49.61	67.47	69.56	4,218
Málaga	24,272	90,904	63,788	488,515	4.80	45,871	11,408	40.02	60.48	64.44	2,810
Alicante\Alacant	20,222	60,953	89,300	338,944	5.28	76,918	17,557	18.55	31.95	35.62	2,030
Barcelona	7,977	19,451	74,255	95,002	6.17	9,259	2,836	60.96	78.59	81.16	495
Sevilla	18,325	23,746	43,060	60,604	2.46	6,130	1,832	55.61	75.00	82.07	457
Castellón\Castelló	13,570	4,128	57,425	33,274	5.12	24,013	4,562	12.56	19.59	24.37	377
Valencia\València	12,105	13,943	35,340	53,743	3.42	16,609	3,451	17.88	34.64	40.51	509
Girona	8,423	7,387	25,583	34,705	3.81	21,308	4,389	9.43	16.15	17.96	452
Tarragona	8,341	6,209	29,684	27,229	3.91	13,452	2,728	14.10	24.34	27.36	255
Almería	10,465	2,824	32,150	14,318	3.50	9,999	2,294	15.49	26.69	32.80	290
Granada	9,069	7,740	20,613	20,539	2.45	4,911	1,382	27.63	38.19	50.49	440
Cádiz	5,937	3,256	15,470	13,695	3.17	5,462	1,385	17.73	27.67	34.31	329
Huelva	4,665	2,451	11,418	13,398	3.49	4,305	931	19.22	14.39	23.00	46
Huesca	8,365	895	20,407	2,498	2.47	5,154	1,153	14.79	18.34	26.69	321

4. Travellers, overnight stays, capacity, occupancy, total number of staff from tourist areas with greater number of overnight stays

Tourist Areas	Travellers		Overnight stays			Capacity		Level of occupancy			Employed personnel
	Residents in Spain	Residents abroad	Residents in Spain	Residents abroad	Average stay	Estimated bed-places	Estimated holiday dwelling	Per bed-places	Per Holiday dwelling	Per Holiday dwelling at weekend	
Isla de Tenerife	16,975	81,177	84,515	651,932	7.50	47,615	14,533	51.42	69.76	71.73	3,701
Isla de Gran Canaria	16,147	74,124	50,976	634,293	7.59	48,275	15,057	47.15	66.06	67.41	3,553
Isla de Lanzarote	6,015	61,535	30,179	490,227	7.70	32,471	9,589	52.88	77.92	79.43	2,579
Costa del Sol	19,413	82,627	55,630	463,935	5.09	42,647	10,681	40.49	61.03	64.86	2,679
Costa Blanca	19,432	54,366	88,053	315,025	5.46	73,851	16,940	18.19	31.50	35.20	1,770
Isla de Mallorca	3,004	41,058	11,716	249,231	5.92	17,353	5,759	49.75	58.42	59.86	1,452
Isla de Fuerteventura	5,700	20,731	23,713	180,454	7.72	14,436	4,570	46.84	70.94	72.01	1,082
Costa Barcelona	4,094	3,581	62,576	34,617	12.66	4,823	1,624	67.15	83.24	84.45	168
Costa de Castellón	12,859	4,128	55,466	33,274	5.22	23,298	4,396	12.66	19.55	24.35	347
Barcelona	2,828	15,288	9,968	56,324	3.66	3,762	976	58.37	82.37	85.52	293

5. Travellers, overnight stays, capacity, occupancy, total number of staff from tourist sites with greater number at overnights stays

Tourist sites	Travellers		Overnight stays			Capacity		Level of occupancy			Employed personnel
	Residents in Spain	Residents abroad	Residents in Spain	Residents abroad	Average stay	Estimated bed-places	Estimated holiday dwelling	Per bed-places	Per Holiday dwelling	Per Holiday dwelling at weekend	
San Bartolomé de Tirajana	11,604	41,593	35,583	385,527	7.92	31,131	9,828	44.85	63.57	65.41	2,196
Arona	4,202	37,771	24,738	305,813	7.88	20,178	6,336	54.46	69.87	71.76	1,579
Tías	2,238	33,959	11,302	271,313	7.81	16,583	5,139	56.19	78.76	80.38	1,131
Mogán	2,350	30,491	9,065	236,196	7.47	15,972	4,722	51.14	71.79	71.56	1,220
Benidorm	6,811	36,363	31,067	183,435	4.97	19,411	4,995	36.83	55.16	63.85	664
Adeje	1,040	25,981	5,310	203,256	7.72	14,425	4,062	48.14	74.49	75.59	987
Madrid	18,217	25,840	59,246	89,176	3.37	8,946	3,366	55.07	74.88	77.74	551
Teguise	2,536	16,330	11,490	120,423	6.99	8,772	2,618	49.73	73.84	76.57	673
Mijas	835	18,182	2,706	121,569	6.53	10,188	1,584	40.66	74.81	73.16	456
Benalmádena	3,470	14,052	12,950	84,462	5.56	6,867	1,741	47.02	69.81	73.98	413

* Provinces belonging to uniprovincial Autonomous Communities have not been included because they are reflected in previous tables.

6. Travellers and overnight stays by countries of residence

Countries	Travellers		Overnight stays	
	Total	%	Total	%
TOTAL	893,679	100.00	4,677,423	100.00
Residents in Spain	314,449	35.19	1,052,049	22.49
Residents abroad	579,230	64.81	3,625,373	77.51
Total residents abroad	579,230	100.00	3,625,373	100.00
Total residents in E.U (excluding Spain)	491,559	84.86	3,177,291	87.64
- Germany	61,426	10.60	510,773	14.09
- Austria	2,334	0.40	14,690	0.41
- Belgium	11,320	1.95	72,455	2.00
-Denmark	12,657	2.19	94,262	2.60
- Finland	10,411	1.80	85,497	2.36
- France	46,012	7.94	192,941	5.32
- Greece	612	0.11	3,126	0.09
- Ireland	24,296	4.19	163,250	4.50
- Italy	23,398	4.04	96,368	2.66
- Luxembourg	299	0.05	2,422	0.07
- Netherlands	36,010	6.22	232,295	6.41
- Poland	9,190	1.59	49,784	1.37
- Portugal	10,084	1.74	43,987	1.21
- United Kingdom	208,149	35.94	1,353,627	37.34
- Czech Republic	2,120	0.37	11,232	0.31
- Sweden	22,807	3.94	196,172	5.41
- Other EU countries	10,435	1.80	54,409	1.50
Norway	14,025	2.42	111,091	3.06
Russia	6,155	1.06	34,386	0.95
Switzerland	7,230	1.25	41,588	1.15
Other european countries	5,996	1.04	36,108	1.00
United States of America	12,227	2.11	44,849	1.24
Rest of America	16,578	2.86	81,754	2.26
African countries	5,601	0.97	23,279	0.64
Other countries	19,859	3.43	75,027	2.07

Tourist Accommodation Occupancy Survey Campsite Occupancy Survey (COS)

April 2018

Provisional data

1. Travellers, overnight stays and average stay by category of establishment

Category	Travellers			Overnight stays			Average stay
	Total	Residents	Residents	Total	Residents	Residents	
		in Spain	abroad		in Spain	abroad	
TOTAL	507,142	326,651	180,491	2,221,883	1,178,609	1,043,274	4.38
Luxury and first-class	218,138	130,463	87,675	1,018,923	542,554	476,370	4.67
Second-class	249,187	166,104	83,083	1,093,911	563,687	530,224	4.39
Third-class	39,818	30,084	9,734	109,049	72,369	36,680	2.74
Annual rate	-30.52	-39.71	-4.03	-21.51	-32.72	-3.33	12.96
Cumulative annual rate	-5.01	-9.12	4.19	0.37	-4.16	3.65	5.65

2. Open establishments, capacity, occupancy and number of staff by category of establishments

Category	Estimated open establishments	Capacity		Occupied pitches	Occupancy rate per pitch	Weekend occupancy rate	Employed personnel
		Estimated bedplaces	Estimated pitches				
TOTAL	832	562,219	173,803	1,654,653	31.73	33.77	6,378
Luxury and first-class	231	240,010	71,825	648,507	30.10	32.58	2,878
Second-class	475	276,367	87,618	883,882	33.63	35.00	3,037
Third-class	126	45,842	14,361	122,264	28.38	32.33	463
Annual rate	-2.52	-1.56	-2.02	-11.22	-9.38	-12.93	0.69
Cumulative annual rate	-0.46	0.10	-0.62	-0.29	0.21	-1.84	6.00

3. Travellers, overnight stays and average stay by Autonomous Cities and Communities

Autonomous cities and communities	Travellers			Overnight stays			Average stay
	Total	Residents	Residents	Total	Residents	Residents	
		in Spain	abroad		in Spain	abroad	
TOTAL	507,142	326,651	180,491	2,221,883	1,178,609	1,043,274	4.38
Andalucía	60,583	26,726	33,857	241,911	100,097	141,814	3.99
Aragón	20,654	12,138	8,517	52,127	31,977	20,150	2.52
Asturias, Principado de	4,594	3,078	1,516	10,607	7,754	2,854	2.31
Balears, Illes*	-	-	-	-	-	-	-
Canarias*	-	-	-	-	-	-	-
Cantabria	14,435	11,407	3,028	89,582	82,884	6,698	6.21
Castilla y León	16,837	7,314	9,524	32,558	18,409	14,149	1.93
Castilla - La Mancha	5,329	3,887	1,442	11,798	9,191	2,607	2.21
Cataluña	230,268	163,684	66,584	897,434	567,055	330,379	3.90
Comunitat Valenciana	81,577	52,093	29,485	632,567	223,813	408,754	7.75
Extremadura	8,989	6,081	2,908	20,522	14,358	6,164	2.28
Galicia	2,272	1,399	873	5,388	3,601	1,787	2.37
Madrid, Comunidad de	18,929	14,848	4,082	59,231	47,285	11,946	3.13
Murcia, Región de	11,099	5,595	5,504	78,734	15,378	63,356	7.09
Navarra, Comunidad Foral de	8,099	6,004	2,095	25,226	21,274	3,953	3.11
País Vasco	12,921	5,700	7,221	28,080	16,113	11,967	2.17
Rioja, La	7,078	4,935	2,143	19,124	15,755	3,370	2.70
Ceuta	-	-	-	-	-	-	-
Melilla	-	-	-	-	-	-	-

* The size of the sample in this community does not facilitate the INE the broken down results, with the objective of maintaining statistical secrecy. Nevertheless, the data corresponding to this community is included in the national total.

4. Open establishments, capacity, occupancy and number of staff by autonomous cities and communities

Autonomous cities and communities	Estimated open establishments	Capacity		Occupied pitches	Occupancy rate per pitch	Weekend occupancy rate	Employed personnel
		Estimated bedplaces	Estimated pitches				
TOTAL	832	562,219	173,803	1,654,653	31.73	33.77	6,378
Andalucía	125	71,516	22,875	150,710	21.96	23.19	875
Aragón	77	27,884	8,519	50,049	19.58	20.51	321
Asturias, Principado de	24	14,833	4,722	21,120	14.91	16.09	94
Balears, Illes*	-	-	-	-	-	-	-
Canarias*	-	-	-	-	-	-	-
Cantabria	28	24,490	7,766	81,926	35.16	34.73	205
Castilla y León	55	22,646	7,259	35,268	16.19	18.62	164
Castilla - La Mancha	22	8,364	2,599	17,212	22.07	24.87	80
Cataluña	224	224,863	67,666	646,569	31.85	34.89	2,601
Comunitat Valenciana	120	73,773	23,187	378,707	54.44	57.11	1,035
Extremadura	25	9,937	3,183	21,823	22.85	26.14	136
Galicia	35	14,059	4,201	9,469	7.51	8.08	88
Madrid, Comunidad de	19	17,724	5,985	80,219	44.68	44.44	203
Murcia, Región de	17	14,839	4,887	49,865	34.01	35.46	184
Navarra, Comunidad Foral de	24	14,466	3,821	32,165	28.06	30.62	131
País Vasco	20	10,489	3,048	22,982	25.13	29.99	126
Rioja, La	9	8,091	2,458	45,305	61.45	62.83	70
Ceuta	-	-	-	-	-	-	-
Melilla	-	-	-	-	-	-	-

5. Travellers and overnight stays, average stay, capacity, occupancy and number of staff by provinces with the greatest number of overnight stays**

Provinces	Travellers		Overnight stays		Average stay	Estimated open establishments	Estimated pitches	Occupancy rate per pitch	Employed personnel
	Residents in Spain	Residents abroad	Residents in Spain	Residents abroad					
	Tarragona	61,012	23,702	292,325					
Alicante\Alicant	15,812	12,500	86,813	266,371	12.47	44	10,013	65.11	446
Girona	51,989	24,992	156,157	130,066	3.72	88	26,490	24.59	1,040
Barcelona	42,132	17,472	94,605	77,231	2.88	43	12,047	43.88	460
Castellón\Castelló	14,070	10,849	61,696	104,380	6.66	41	6,851	46.69	325
Valencia\València	22,212	6,135	75,303	38,004	4.00	35	6,322	45.95	264
Málaga	6,000	8,660	23,682	63,334	5.94	29	4,941	35.26	228
Cádiz	4,446	6,612	16,679	20,673	3.38	23	5,887	12.54	214
Almería	3,163	4,168	13,283	22,658	4.90	17	2,656	30.22	98
Huelva	5,042	2,830	28,192	6,998	4.47	8	2,877	20.81	79
Lleida	8,551	418	23,969	1,072	2.79	38	6,025	34.05	121
Granada	2,753	5,856	6,764	17,085	2.77	22	2,722	22.02	116
Huesca	7,216	2,570	18,627	4,781	2.39	47	5,992	20.60	222
Zaragoza	3,033	4,672	8,870	11,618	2.66	14	1,364	21.64	57
Gipúzkoa	3,319	4,385	7,507	8,161	2.03	10	1,780	21.39	66

** Provinces belonging to uniprovincial Autonomous Communities have not been included because they are reflected in previous tables.

6. Travellers, overnight stays, average stay, open establishments, capacity, occupancy and number of staff from tourist areas with the greatest number of overnight stays

Tourist areas	Travellers		Overnight stays		Average stay	Estimated open establishments	Estimated pitches	Occupancy rate per pitch	Employed personnel
	Residents in Spain	Residents abroad	Residents in Spain	Residents abroad					
Costa Daurada	55,869	20,158	257,275	109,291	4.82	44	20,860	33.15	872
Costa Blanca	11,372	10,749	56,212	235,443	13.18	36	7,775	69.98	373
Costa Brava	43,003	24,731	135,347	128,782	3.90	68	24,242	23.35	961
Costa de Castellón	12,610	9,603	55,111	98,395	6.91	32	6,056	48.90	301
Costa Barcelona	32,587	17,204	75,285	76,622	3.05	27	9,890	43.86	344
pn Aiguamolls de l'Empordà	4,454	9,653	39,988	60,096	7.09	12	5,054	28.83	230
Costa Valencia	13,931	3,865	55,457	30,747	4.84	18	4,337	48.94	170
Costa del Sol	3,852	6,331	19,390	58,294	7.63	14	3,665	40.02	173
Costa Cálida	2,297	4,283	7,122	56,971	9.74	9	3,824	34.60	149
Pirineus	22,337	669	51,776	2,212	2.35	63	8,909	37.27	267
Terres de l'Ebre	5,143	3,544	35,050	12,719	5.50	11	2,244	35.09	107
pn Delta de l'Ebre	3,753	1,638	30,475	5,005	6.58	5	1,237	45.60	63
Costa de la Luz (Cádiz)	3,948	5,860	15,777	19,121	3.56	20	5,320	12.30	196
Costa de la Luz (Huelva)	4,502	2,341	27,036	5,443	4.75	6	2,732	19.71	71
Costa de Almería	2,827	4,069	11,755	20,040	4.61	14	2,326	28.44	82

7. Travellers, overnight stays, average stay, open establishments, capacity, occupancy and number of staff from tourist sites with the greatest number at overnights stays

Tourist sites	Travellers		Overnight stays		Average stay	Estimated open establishments	Estimated pitches	Occupancy rate per pitch	Employed personnel
	Residents in Spain	Residents abroad	Residents in Spain	Residents abroad					
Benidorm	1,669	4,357	8,139	149,078	26.09	9	3,892	82.68	146
Mont-Roig del Camp	6,646	4,705	44,521	39,421	7.40	6	4,270	32.84	159
Tarragona	6,021	3,358	62,056	10,543	7.74	5	2,728	32.16	185
Salou	8,702	3,918	32,199	25,369	4.56	3	2,175	28.12	107
Vilanova i la Geltrú	6,991	6,993	12,255	42,705	3.93	3	2,631	42.62	94
Noja	1,856	177	45,098	1,185	22.77	4	2,363	38.89	38
Castelló D'Empúries	1,547	2,225	18,979	19,837	10.29	3	1,861	31.70	77
Cartagena	570	2,057	2,321	36,404	14.74	3	2,555	25.43	88
Oliva	3,505	1,420	17,846	20,865	7.86	6	1,430	45.20	107
Cambrils	6,018	3,617	21,411	16,792	3.97	6	3,260	37.20	98
Peníscola	3,242	4,045	11,578	26,418	5.21	8	1,315	46.08	65
Blanes	12,012	1,845	28,080	9,111	2.68	9	3,405	41.48	175

8. Travellers and overnight stays by countries of residence

Countries	Travellers		Overnight stays	
	Total	%	Total	%
TOTAL	507,142	100.00	2,221,883	100.00
Residents in Spain	326,651	64.41	1,178,609	53.05
Residents abroad	180,491	35.59	1,043,274	46.95
TOTAL residents abroad	180,491	100.00	1,043,274	100.00
TOTAL residents in E.U. (excluding Spain)	168,377	93.29	995,097	95.38
- Germany	34,804	19.28	200,891	19.26
- Austria	1,157	0.64	5,372	0.51
- Belgium	6,591	3.65	51,747	4.96
- Denmark	1,576	0.87	9,448	0.91
- Finland	694	0.38	4,681	0.45
- France	53,569	29.68	191,367	18.34
- Greece	109	0.06	328	0.03
- Ireland	1,841	1.02	9,414	0.90
- Italy	2,400	1.33	6,600	0.63
- Luxembourg	322	0.18	2,310	0.22
- Netherlands	30,535	16.92	186,221	17.85
- Poland	879	0.49	5,858	0.56
- Portugal	1,716	0.95	4,014	0.38
- United Kingdom	27,857	15.43	296,579	28.43
- Czech Republic	433	0.24	938	0.09
- Sweden	2,233	1.24	13,097	1.26
- Other EU countries	1,661	0.92	6,232	0.60
Norway	661	0.37	6,584	0.63
Russia	84	0.05	282	0.03
Switzerland	6,476	3.59	26,083	2.50
Other European countries	1,097	0.61	3,898	0.37
United States of America	559	0.31	1,661	0.16
Rest of America	694	0.38	1,779	0.17
African countries	128	0.07	444	0.04
Other countries	2,417	1.34	7,446	0.71

Tourist accommodation occupancy survey (Rural tourist accommodation)

April 2018

Provisional data

1. Number of travellers, overnight stays and average stay by Autonomous City and Community

Autonomous Communities	Number of travellers			Number of overnight stays			Average stay
	Total	Residents In Spain	Residents abroad	Total	Residents In Spain	Residents abroad	
TOTAL	342,566	273,016	69,550	812,974	587,864	225,110	2.37
Andalucía	27,146	14,776	12,370	86,084	34,140	51,944	3.17
Aragón	16,021	14,564	1,457	40,779	35,014	5,765	2.55
Asturias, Principado de	19,070	17,478	1,592	46,469	42,649	3,821	2.44
Balears, Illes	29,914	4,111	25,803	95,415	8,912	86,503	3.19
Canarias	6,162	1,767	4,395	30,606	4,786	25,820	4.97
Cantabria	16,915	15,747	1,169	34,628	32,644	1,985	2.05
Castilla y León	70,757	65,373	5,384	143,345	134,162	9,184	2.03
Castilla-La Mancha	24,120	22,764	1,357	50,570	48,303	2,267	2.10
Cataluña	37,432	33,533	3,899	79,885	69,695	10,190	2.13
Comunitat Valenciana	17,499	15,866	1,632	40,084	34,543	5,540	2.29
Extremadura	21,923	19,619	2,304	48,812	41,767	7,045	2.23
Galicia	13,040	9,189	3,850	21,123	15,569	5,555	1.62
Madrid, Comunidad de	10,943	10,349	594	20,499	19,427	1,072	1.87
Murcia, Región de	3,719	3,034	684	7,545	5,785	1,760	2.03
Navarra, Comunidad Foral de	10,933	10,450	483	27,133	25,776	1,356	2.48
País Vasco	13,251	10,854	2,397	31,668	26,778	4,890	2.39
Rioja, La	3,722	3,540	182	8,329	7,915	414	2.24
Ceuta	-	-	-	-	-	-	-
Melilla	-	-	-	-	-	-	-
Annual rate	-17.21	-21.36	4.42	-25.65	-31.73	-3.11	-10.19
Cumulative annual rate	1.92	0.22	12.55	0.79	-1.35	8.50	-1.11

2. Open rural establishments, bed-places, occupancy rates and employed personnel by Autonomous City and Community

Autonomous Communities	Estimated open rural establishments	Estimated bed-places	Occupancy rate			Employed personnel
			Of bed-places	Of bed-places at weekend	Of bedrooms	
TOTAL	16,824	164,195	16.45	32.64	19.82	25,052
Andalucía	2,185	18,415	15.55	24.25	20.85	3,218
Aragón	1,208	9,505	14.21	30.68	16.58	1,383
Asturias, Principado de	1,390	13,901	11.13	20.09	12.48	1,838
Balears, Illes	406	8,335	37.97	41.89	44.57	2,396
Canarias	541	3,422	29.74	33.42	43.85	771
Cantabria	419	6,783	16.91	34.50	20.91	737
Castilla y León	3,542	31,830	14.97	37.11	17.66	4,869
Castilla-La Mancha	1,671	14,685	11.46	31.84	13.65	2,116
Cataluña	1,989	17,722	14.99	34.87	17.10	2,705
Comunitat Valenciana	847	10,320	12.93	22.62	16.03	1,236
Extremadura	593	7,209	22.51	48.52	29.34	879
Galicia	496	6,292	11.15	21.47	13.25	817
Madrid, Comunidad de	217	3,120	21.87	50.11	29.58	487
Murcia, Región de	153	2,398	10.47	24.25	13.19	245
Navarra, Comunidad Foral de	672	4,961	18.14	41.08	19.79	806
País Vasco	375	4,161	25.16	44.43	28.59	422
Rioja, La	118	1,136	23.91	49.31	24.32	129
Ceuta	-	-	-	-	-	-
Melilla	-	-	-	-	-	-
Annual rate	0.30	2.00	-26.95	-18.10	-26.89	4.37
Cumulative annual rate	1.02	2.74	-2.24	-4.45	-3.16	6.74

3. Number of travellers, overnight stays and average stay in Provinces with the greatest number of overnight stays¹

Provinces	Number of travellers			Number of overnight stays			Average stay
	Total	Residents In Spain	Residents abroad	Total	Residents In Spain	Residents abroad	
Málaga	9,225	2,370	6,854	44,575	6,727	37,849	4.83
Cáceres	18,968	16,972	1,997	43,353	36,749	6,604	2.29
Girona	16,308	14,068	2,240	34,485	28,824	5,661	2.11
Barcelona	11,822	10,845	978	25,245	22,433	2,811	2.14
Santa Cruz de Tenerife	4,357	1,298	3,059	22,583	3,528	19,055	5.18
Segovia	10,927	10,645	281	22,092	21,563	530	2.02
Huesca	8,105	7,195	910	21,415	17,666	3,749	2.64
Burgos	11,111	9,887	1,224	21,028	19,356	1,672	1.89
Ávila	9,714	9,587	127	20,314	20,100	213	2.09
Valencia\València	9,220	8,294	926	19,324	16,887	2,438	2.10
Salamanca	9,728	9,053	675	19,114	17,696	1,418	1.96
Soria	8,195	8,023	172	18,474	18,215	259	2.25
Gipuzkoa	7,251	5,748	1,503	17,302	14,136	3,166	2.39
León	8,725	7,104	1,621	16,676	14,461	2,215	1.91
Albacete	6,354	6,157	197	13,561	13,252	309	2.13

4. Open rural establishments, bed-places, occupancy rates and employed personnel in Provinces with the highest number of overnight stays¹

Provinces	Estimated open rural establishments	Estimated bed-places	Occupancy rate			Employed personnel
			Of bed-places	Of bed-places at weekend	Of bedrooms	
Málaga	1,166	7,928	18.72	23.72	25.97	1,600
Cáceres	487	5,925	24.33	51.95	31.79	717
Girona	659	6,691	17.14	41.19	19.67	700
Barcelona	545	4,767	17.60	40.31	20.11	945
Santa Cruz de Tenerife	437	2,597	28.89	32.78	43.48	598
Segovia	444	4,107	17.89	49.57	20.73	614
Huesca	668	5,163	13.77	28.68	16.39	786
Burgos	412	4,138	16.90	42.98	19.39	491
Ávila	723	6,037	11.19	28.99	13.46	980
Valencia\València	240	4,037	15.94	26.41	17.98	367
Salamanca	509	4,245	14.99	37.81	18.77	653
Soria	348	3,322	18.40	45.95	20.00	460
Gipuzkoa	171	1,953	29.23	48.57	33.46	199
León	459	3,649	15.20	32.86	17.85	624
Albacete	702	4,686	9.65	26.39	11.79	871

¹ Provinces belonging to uniprovincial Autonomous Communities have not been included because they are reflected in previous tables.

5. Number of travellers, overnight stays, average stay, capacity and occupancy rates in areas with the highest number of overnight stays

Areas	Number of travellers		Number of overnight stays		Average stay	Capacity		Occupancy rate		
	Residents In Spain	Residents abroad	Residents In Spain	Residents abroad		Estimated open rural establishments	Estimated bed-places	Of bed-places	Of bed-places at weekend	Of bedrooms
Isla de Mallorca	2,906	23,596	6,093	78,752	3.20	354	7,216	38.99	42.59	46.32
Extremadura Norte	13,534	932	29,758	3,714	2.31	334	4,076	27.33	58.13	36.34
Pirineus	11,268	275	23,899	570	2.12	779	6,476	12.55	32.64	14.47
Costa Brava	8,832	1,996	18,516	5,153	2.19	394	4,128	19.08	43.29	21.74
Pirineo Navarro	8,728	224	21,727	549	2.49	563	3,973	18.60	40.93	19.69
Pirineo Aragonés	6,385	863	15,985	3,628	2.71	622	4,804	13.55	27.26	16.57
P.Natural Sierras de Tejada, Almija	571	3,481	1,433	16,452	4.41	390	2,416	24.68	25.54	37.62
Costa Verde	6,454	256	16,907	556	2.60	503	5,553	10.48	18.72	11.71
P.Nacional Picos de Europa	5,421	517	12,981	1,413	2.42	282	2,594	18.43	26.94	19.08
Isla de Tenerife	985	1,879	1,713	9,351	3.86	109	1,193	30.89	38.07	40.11
Parque Nacional Sierra de Guadarrama	5,992	317	9,213	541	1.55	113	1,526	21.27	50.29	24.47
P.Natural de Corona Forestal	897	1,534	1,486	7,572	3.72	81	918	32.85	41.61	40.87
Pirineo Vasco	3,214	451	7,822	928	2.39	113	1,280	22.47	46.22	24.71
Costa del Sol	141	988	988	7,443	7.47	200	1,323	21.24	21.67	28.61
Isla de La Palma	127	716	728	7,219	9.43	231	890	29.56	30.62	52.48

6. Number of travellers, overnight stays, average stay, capacity, occupancy rates and employed personnel per rural house by Autonomous City and Community²

Autonomous Communities	Number of travellers		Number of overnight stays		Average stay	Capacity		Occupancy rate		Employed personnel
	Residents In Spain	Residents abroad	Residents In Spain	Residents abroad		Estimated open rural establish.	Estimated bed-places	Of bed-places	Of bed-places at weekends	
TOTAL	183,690	37,945	410,215	131,823	2.45	14,378	119,926	15.01	31.96	18,748
Andalucía	14,717	12,347	34,026	51,858	3.17	2,183	18,361	15.56	24.23	3,206
Aragón	12,233	1,034	29,167	3,970	2.50	968	7,498	14.64	32.11	1,120
Asturias, Principado de	7,880	335	18,686	584	2.35	849	5,496	11.67	22.04	997
Balears, Illes	2,264	9,102	4,069	27,195	2.75	139	2,179	47.24	57.76	532
Canarias	520	2,133	2,558	16,626	7.23	511	2,568	24.82	25.66	609
Cantabria	4,408	65	10,695	322	2.46	197	2,634	13.92	30.02	256
Castilla y León	38,903	1,126	87,983	3,103	2.28	3,129	22,920	13.22	35.99	3,692
Castilla-La Mancha	21,693	1,341	45,767	2,247	2.08	1,638	13,854	11.53	32.46	2,065
Cataluña	33,533	3,899	69,695	10,190	2.13	1,989	17,722	14.99	34.87	2,705
Comunitat Valenciana	9,016	1,298	20,128	4,236	2.36	797	7,247	11.18	22.29	1,040
Extremadura	8,681	812	18,903	2,757	2.28	370	3,592	20.06	44.04	497
Galicia	5,779	1,847	10,222	2,770	1.70	369	4,422	9.76	20.97	536
Madrid, Comunidad de	2,078	148	5,437	312	2.58	86	861	22.22	42.54	101
Murcia, Región de	2,164	394	4,409	1,227	2.20	140	2,052	9.14	23.86	205
Navarra, Comunidad Foral de	10,450	483	25,776	1,356	2.48	670	4,947	18.20	41.19	799
País Vasco	5,829	1,399	14,777	2,657	2.41	223	2,437	23.66	42.81	259
Rioja, La	3,540	182	7,915	414	2.24	118	1,136	23.91	49.31	129
Ceuta	-	-	-	-	-	-	-	-	-	-
Melilla	-	-	-	-	-	-	-	-	-	-

² To facilitate the comparability between data from different Autonomous Communities (and because of the different regulation and different characteristics), a group called rural house has been created, with those establishments with similar typology (location, capacity, etc...). The variables included in the previous table have been estimated with that type of establishments.

7. Travellers and overnight stays by country of residence

Results by countries	Travellers		Overnight stays	
	Total	%	Total	%
TOTAL	342,566	100.00	812,974	100.00
Residents Spain	273,016	79.70	587,864	72.31
Residents abroad	69,550	20.30	225,110	27.69
Total Residents abroad	69,550	100.00	225,110	100.00
Total Residents in EU (excluding Spain)	53,005	76.21	184,255	81.85
- Germany	17,963	25.83	68,826	30.57
- Belgium	2,195	3.16	8,396	3.73
- France	8,681	12.48	20,981	9.32
- Italy	1,890	2.72	5,154	2.29
- Netherlands	5,794	8.33	23,093	10.26
- Portugal	1,294	1.86	2,880	1.28
- United Kingdom	10,822	15.56	39,778	17.67
Switzerland	2,953	4.25	9,566	4.25
Other European countries	6,428	9.24	20,107	8.93
United States of America	3,437	4.94	7,257	3.22
Other countries	8,095	11.64	19,071	8.47

Tourist Accommodation Occupancy Survey Hostels Occupancy Survey (HOS)

April 2018 Provisional data

1. Travellers, overnight stays and average stay by Autonomous Cities and Communities

Autonomous cities and communities	Travellers			Overnight stays			Average stay
	Total	Residents in Spain	Residents abroad	Total	Residents in Spain	Residents abroad	
TOTAL	106,003	74,549	31,453	245,459	165,619	79,839	2.32
Andalucía	17,099	14,664	2,435	48,214	41,856	6,358	2.82
Aragón	4,118	3,867	251	8,917	8,109	808	2.17
Asturias, Principado de	382	365	17	1,364	1,330	34	3.57
Balears, Illes	-	-	-	-	-	-	-
Canarias	2,522	701	1,821	8,021	1,742	6,279	3.18
Cantabria	1,804	1,616	188	4,754	4,314	440	2.64
Castilla y León	5,516	4,875	641	12,635	11,489	1,146	2.29
Castilla - La Mancha	3,750	3,655	95	9,846	9,715	131	2.63
Cataluña	38,002	22,688	15,314	84,057	42,214	41,843	2.21
Comunitat Valenciana	9,144	5,270	3,874	22,940	12,230	10,710	2.51
Extremadura	1,452	1,379	73	2,977	2,796	181	2.05
Galicia	421	334	87	1,117	945	172	2.65
Madrid, Comunidad de	6,163	3,397	2,766	12,875	7,305	5,570	2.09
Murcia, Región de	-	-	-	-	-	-	-
Navarra, Comunidad Foral de	4,498	3,198	1,300	7,881	6,156	1,724	1.75
País Vasco	8,537	6,444	2,093	14,957	11,712	3,245	1.75
Rioja, La	1,246	859	387	2,022	1,516	506	1.62
Ceuta	-	-	-	-	-	-	-
Melilla	-	-	-	-	-	-	-
Annual rate	1.13	-1.56	8.13	1.41	-1.52	8.09	0.28
Cumulative annual rate	18.47	17.31	21.29	19.08	20.92	15.36	0.52

2. Open establishments, capacity, occupancy and number of staff by autonomous cities and communities

Autonomous cities and communities	Capacity		Occupancy rate		Employed personnel
	Estimated open establishments	Estimated bed-places	Of bed-places	Of bed-places at weekend	
TOTAL	253	26,097	31.35	39.82	1,883
Andalucía	17	3,599	44.65	44.63	235
Aragón	21	1,822	16.32	26.11	94
Asturias, Principado de	4	316	14.39	27.89	43
Balears, Illes	-	-	-	-	-
Canarias	30	664	40.27	48.20	67
Cantabria	9	626	25.31	26.76	41
Castilla y León	23	2,110	19.96	24.50	162
Castilla - La Mancha	25	2,396	13.70	17.41	99
Cataluña	48	6,593	42.50	60.48	444
Comunitat Valenciana	14	2,197	34.81	44.14	105
Extremadura	10	778	12.75	23.70	46
Galicia	5	575	6.48	7.18	51
Madrid, Comunidad de	7	757	56.69	70.84	193
Murcia, Región de	-	-	-	-	-
Navarra, Comunidad Foral de	12	997	26.35	24.14	101
País Vasco	18	1,957	25.48	30.31	135
Rioja, La	6	354	19.03	36.56	18
Ceuta	-	-	-	-	-
Melilla	-	-	-	-	-
Annual rate	18.70	2.53	-1.08	2.98	9.34
Cumulative annual rate	22.83	7.10	10.88	3.91	12.37

3. Travellers and overnight stays by countries of residence

Countries	Travellers		Overnight stays		Average stay
	Total	%	Total	%	
TOTAL	106,003	100.00	245,459	100.00	2.32
Residents in Spain	74,549	70.33	165,619	67.47	2.22
Residents abroad	31,453	29.67	79,839	32.53	2.54
TOTAL residents abroad	31,453	100.00	79,839	100.00	2.54
TOTAL residents in E.U. (excluding Spain)	22,121	70.33	56,043	70.20	2.53
- Germany	3,473	11.04	8,251	10.33	2.38
- Belgium	743	2.36	2,231	2.79	3.00
- France	6,909	21.97	17,423	21.82	2.52
- Italy	3,099	9.85	7,843	9.82	2.53
- Netherlands	1,044	3.32	2,842	3.56	2.72
- Portugal	1,307	4.15	3,365	4.21	2.58
- United Kingdom	2,929	9.31	6,952	8.71	2.37
Switzerland	393	1.25	913	1.14	2.32
Other European countries	4,256	13.53	10,677	13.37	2.51
United States of America	2,011	6.39	4,168	5.22	2.07
Other countries	5,291	16.82	15,174	19.01	2.87

HOLIDAY DWELLING PRICE INDEX (HDPI)

April 2018

Provisional data

National general index and breakdown by rates

	Index	Annual variation rate
TOTAL	128.24	0.93
Normal	124.44	0.44
Weekend	122.22	-0.71
Tour-operators and travel agencies	134.08	1.68

National general index and breakdown by modalities

	Index	Annual variation rate
TOTAL	128.24	0.93
Studio	130.52	4.22
Dwellings 2/4 bedplaces	127.41	0.72
Dwellings 4/6 bedplaces	133.50	-0.37

Rural Tourism Accommodation Price Index (RTAPI)

April 2018

Provisional data

General Autonomous Cities and Communities and national indices

	Index	Annual variation rate
TOTAL	133.07	0.90
Andalucía	135.32	-1.20
Aragón	157.78	0.49
Asturias, Principado de	139.52	-1.97
Balears, Illes	104.71	-1.73
Canarias	122.31	1.93
Cantabria	170.64	4.77
Castilla y León	136.10	0.68
Castilla - La Mancha	136.41	2.00
Cataluña	148.65	1.59
Comunitat Valenciana	141.33	5.00
Extremadura	102.29	-3.03
Galicia	142.19	4.86
Madrid, Comunidad de	131.40	2.73
Murcia, Región de	147.37	3.12
Navarra, Comunidad Foral de	193.80	5.08
País Vasco	152.28	1.76
Rioja, La	141.46	2.63
Ceuta	-	-
Melilla	-	-

National general index and breakdown by rates

	Index	Annual variation rate
TOTAL	133.07	0.90
Normal	128.63	0.88
Weekend	139.32	0.91

National general index and breakdown by rent modality

	Index	Annual variation rate
TOTAL	133.07	0.90
Shared use (in case of per room rent modality)	120.42	0.24
Full use (rent of entire dwelling)	141.83	1.13

Tourist Campsite Price Index (TCSPI). 2002 Base

April 2018

Provisional data

National general index and breakdown by rates

	Index	Annual variation rate
TOTAL	136.07	-0.39
Normal rate	135.67	-1.07
Special rate for stays up to one month	138.15	-2.73
Special rate for stays longer than one month	147.45	2.12
Bungalow rate*	94.26	-1.03

National general index and breakdown by categories

	Index	Annual variation rate
TOTAL	136.07	-0.39
Luxury and first	122.08	0.33
Second	144.98	-1.45
Third	157.30	3.26

*2014 Base

TCSPI (ANNEX OF TABLES) - APRIL 2018

31st May 2018