

30 August 2019
(Updated 11-09-2019)

Non-hotel Tourist Accommodation Occupancy Survey
July 2019. Provisional data

Overnight stays in non-hotel tourist accommodation decrease by 0.5% in July, as compared to the same month of 2018

Overnight stays in non-hotel tourist accommodation (apartments, tourist campsites, rural tourism accommodation and hostels) exceeded 19.7 million in July, 0.5% less than in the same month of 2018. Resident overnight stays increased 0.9% while non-resident overnight stays decreased 1.7%.

The average stay stood at 5.2 overnight stays per traveller.

During the first seven months of 2019, overnight stays decreased by 0.3% as compared to the same period of the previous year.

Travellers and overnight stays in collective non-hotel tourist accommodation during the month of July were:

July 2019	Arrivals	Overnight stays
Residents	2,149,577	9,106,947
EU Residents (excluding Spain)	1,406,947	9,565,658
Rest of the world	228,758	1,074,085
TOTAL	3,785,282	19,746,690

Holiday Dwellings

Overnight stays in holiday dwellings decreased by 1.4% in July. Resident overnight stays decreased by 0.6% and non-resident overnight stays did so by 1.9%.

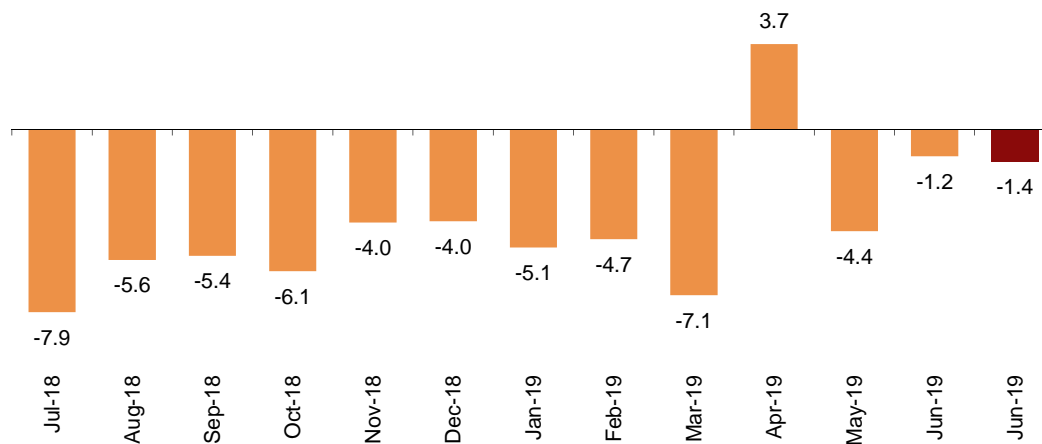
It should be pointed out that the annual variation rates of overnight stays in holiday dwellings showed negative growth over the last few months (with the exception of April 2019, when Easter took place), mainly due to the fact that there are holiday dwelling establishments that are being reclassified, becoming considered as private housing for holiday use and therefore leaving the scope of observation of the Holiday Dwellings Occupancy Survey (HDOS).

The average stay decreased by 1.9% as compared to July 2018, standing at 6.1 overnight stays per traveller.

In July, 50.1% of the bed-places available for holiday dwellings were occupied, 1.9% more than in the same month of 2018. The weekend occupancy rate by bed-places stood at 53.6%, with an increase of 1.8%.

Annual variation rate for overnight stays

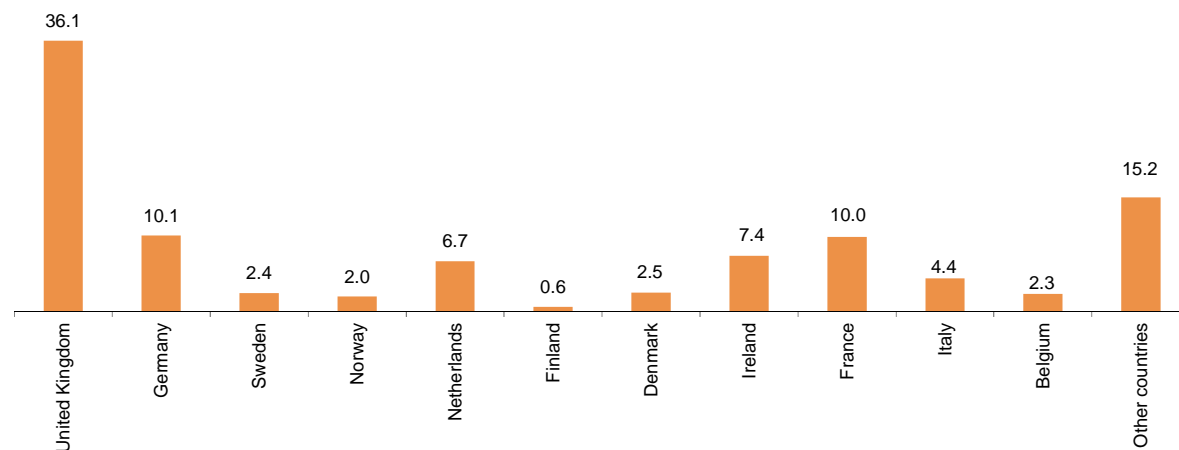
Percentage



Non-resident overnight stays in holiday dwellings represented 65.6% of the total. The United Kingdom was the main country of origin, with 2.3 million overnight stays, that is, 4.0% more than in July 2018. The following country of origin was Germany, with 655,558 overnight stays, 22.4% less.

Distribution of non-residents overnight stays. Main country of residence

Percentage



Canarias was the preferred destination for holiday dwellings, with over 2.5 million overnight stays and a decrease of 7.0% as compared to July 2018. Illes Balears reached the highest occupancy rate, with 85.9% of holiday dwellings offered.

By tourist area, Costa Blanca was the preferred destination, with 973,595 overnight stays. The island of Mallorca registered the highest occupancy rate, with 86.5% of holiday dwellings offered.

The tourist sites with the greatest number of overnight stays in July were San Bartolomé de Tirajana, Arona and Tías.

Tourist Campsites

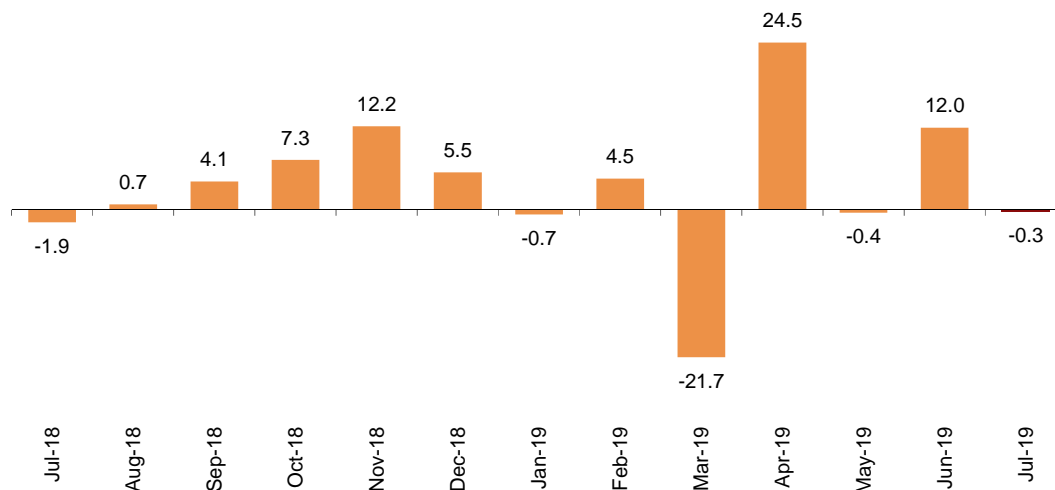
Overnight stays at tourist campsites registered a decrease of 0.3% in July as compared with the same month of the previous year. Overnight stays by residents increased 1.1%, while those by non-residents decreased by 1.9%.

During the month of July, **47.1%** of the offered pitches were occupied, 0.1% **more** than in the same month of 2018. The weekend occupancy rate by pitch reached **51.0%**, with an annual decrease of **1.2%**.

45.5% of overnight stays in tourist campsites were made by non-residents. The Netherlands was the main country of origin, with 31.5% of overnight stays by non-residents, 1.2% more than in July 2018.

Annual variation rate for overnight stays

Percentage



Cataluña was the preferred destination for tourist campsites, with more than 3.9 million overnight stays, representing a decrease of 0.7% in the annual rate. La Rioja reached the highest occupancy rate, with 71.3% of the pitches offered.

By tourist areas, Costa Brava was the preferred destination, with more than 1.9 million overnight stays. On the other hand, Costa Blanca reached the highest occupancy rate, with 71.8% of pitches offered.

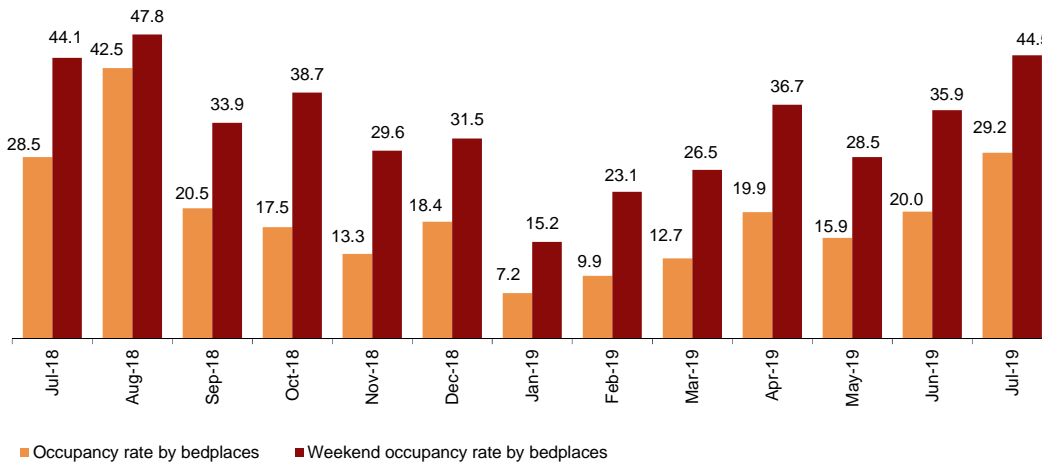
The tourist sites with the most overnight stays were Torroella De Montgrí, Mont-Roig del Camp and Sant Pere Pescador.

Rural tourism accommodation

Overnight stays in rural tourism accommodation presented an annual increase of 4.6% in July. Overnight stays by residents increased 8.0%, while those by non-residents decreased by 1.7%.

In rural tourism accommodation, 29.2% of the bed-places were occupied in July, 2.4% more than in the same month of 2018. The weekend occupancy rate stood at 44.5%, with an 0.9% increase.

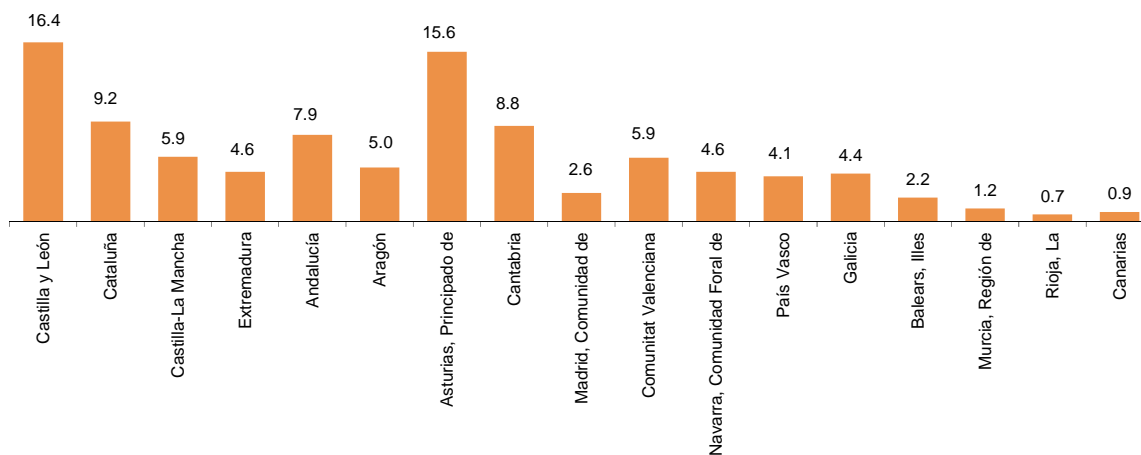
Occupancy rate Percentage



By Autonomous Community, Andalucía was the preferred destination, with 211,536 overnight stays, 12.2% more than in July 2018. Illes Balears reached the highest occupancy rate, with 59.8% of the bed-places offered.

By tourist area, the island of Mallorca was the preferred destination, with 157,258 overnight stays. The island of Menorca registered the highest occupancy rate, with 73.7% of the bed-places offered.

Distribution of overnight stays: residents Percentage

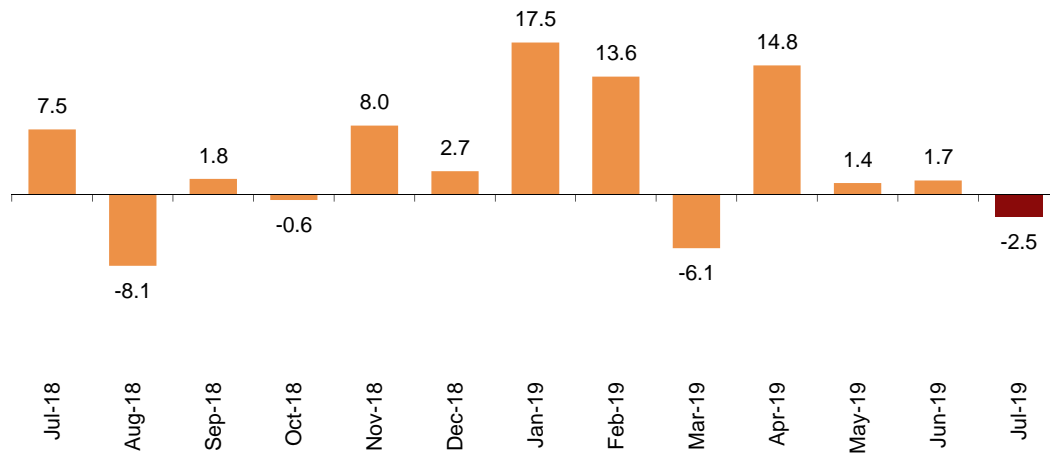


Hostels

Overnight stays in hostels registered an annual decrease of 2.5% in July. Overnight stays by residents decreased by 5.5%, whilst those by non-residents increased by 9.4%.

Annual variation rate for overnight stays

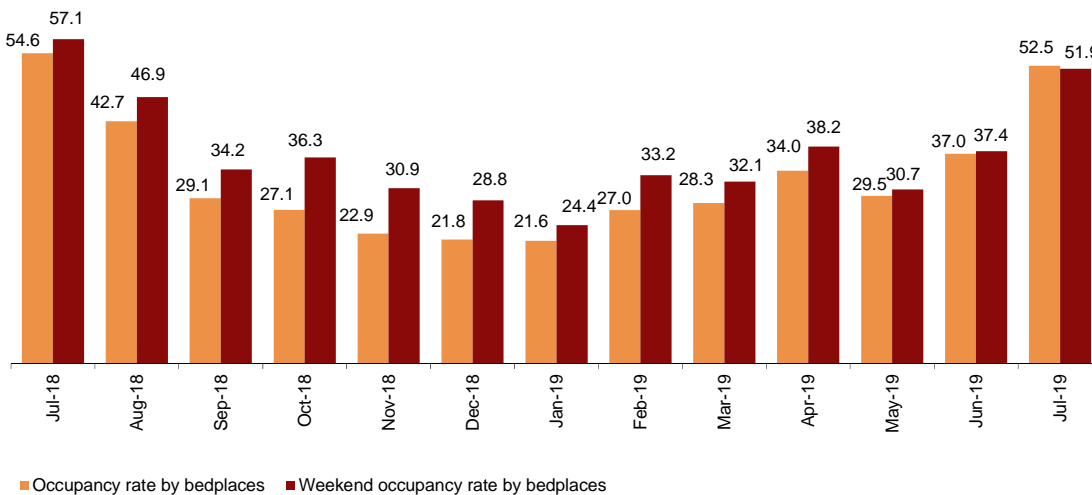
Percentage



This month, 52.5% of the available bedplaces were occupied, 4.0% less than in July 2018. The weekend occupancy rate reached 51.9%, with a 9.2% decrease.

Occupancy rate

Percentage



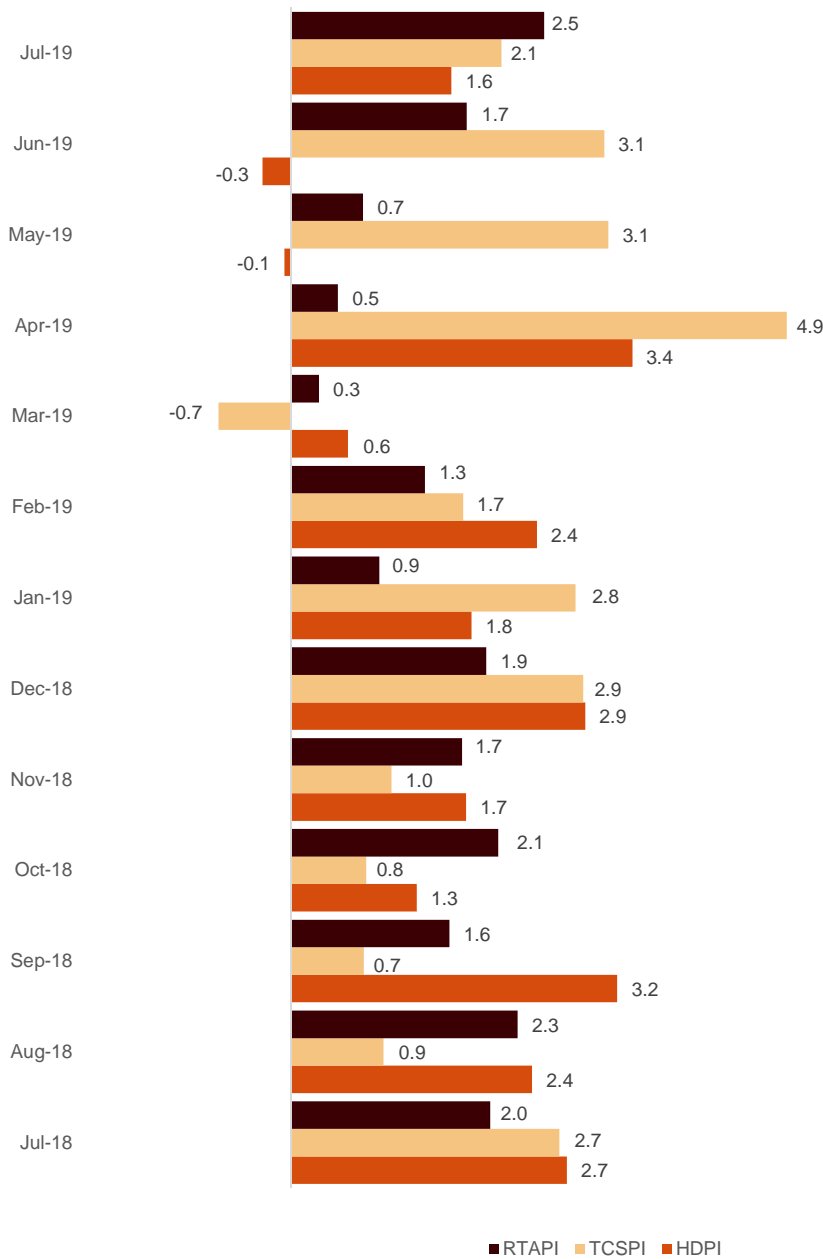
By Autonomous Community, Cataluña was the preferred destination, with 136,011 overnight stays, 0.1% more than in July 2018. País Vasco reached the highest occupancy rate, with 65.7% of the bed-places offered.

Price indices

The Holiday Dwelling Price Index (HDPI) increased 1.6% in July as compared to the same month in 2018.

For its part, the Tourist Campsite Price Index (TCPI) increased by 2.1% and the Rural Tourism Accommodation Price Index (RTAPI) increased by 2.5%.

Prices Indices. Annual variation rate
Percentage



Evolution of travellers and overnight stays in all Spanish collective tourist accommodation

In July, overnight stays in all Spanish tourist accommodations (hotels¹, holiday dwellings, campsites, rural tourism accommodation and hostels) increased its annual rate by 0.6%. Overnight stays by residents increased 3.2%, while those by non-residents decreased by 0.9%.

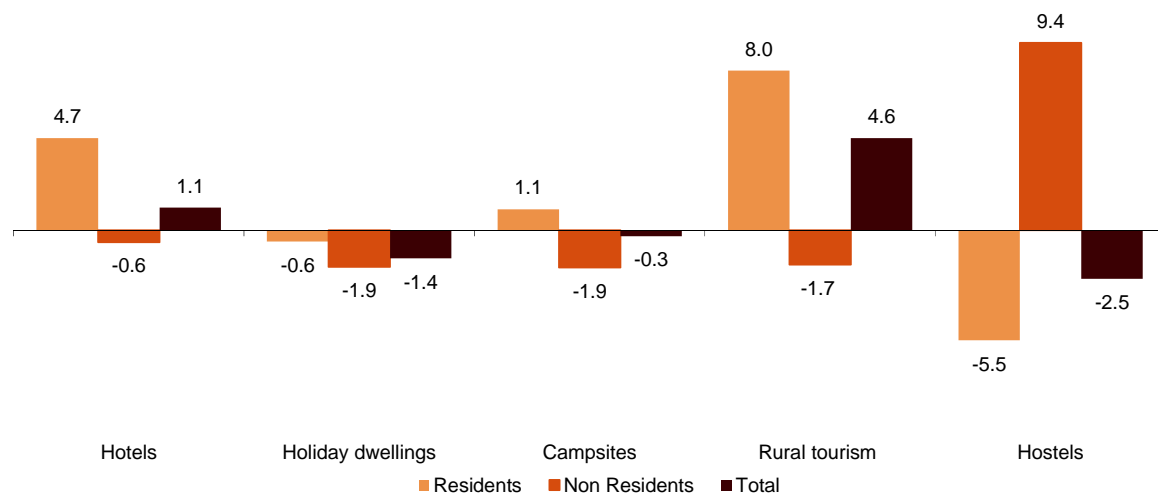
The average stay decreased by 2.0% in July, and stood at 4.0 overnight stays per traveller.

Travellers and overnight stays in collective tourist accommodation were:

July 2019	Holiday dwellings	Campsites	Rural T.	Hostels	Non-hotel	Hotels	Total
Arrivals	1,614,808	1,531,650	519,997	118,826	3,785,281	12,097,381	15,882,662
Residents	674,616	1,004,656	393,502	76,803	2,149,577	5,653,443	7,803,020
Non-residents	940,192	526,994	126,496	42,023	1,635,705	6,443,939	8,079,644
Overnight stays	4,854,236	7,774,298	1,623,062	497,354	14,748,950	43,205,627	57,954,577
Residents	3,390,359	4,239,738	1,094,504	382,346	9,106,947	14,845,306	23,952,253
Non-residents	6,461,617	3,534,560	528,558	115,008	10,639,743	28,360,321	39,000,064

Of the total number of overnight stays in collective tourist accommodation, 75% corresponded to hotels and 25% to non-hotel tourist accommodation.

Overnight stays in collective tourist accommodation. Annual variation rate Percentage



The main countries of origin for all regulated tourist accommodation were the United Kingdom (with 25.7% of the total number of non-resident overnight stays), Germany (15.6%) and France (9.9%).

Cataluña was the preferred destination, with over 13.6 million overnight stays (2.1% more than in July 2018). It was followed by Illes Balears, with more than 12.6 million (a decrease of 2.2%) and Andalucía, with over 9.1 million, (an annual increase of 2.8%).

¹ The press release corresponding to Hotel Tourism Short-Term Trends was published on 21 July.

Revision and updating of data

Coinciding with today's publication, the INE has updated the data for July 2018 of the Occupancy Surveys in: Holiday Dwellings (HDOS), Campsites (COS), Rural Tourism Accommodation (RTAOS) and Hostels (HOS). As well as the Holiday Dwelling Price Index (HDPI), the Tourist Campsite Price Index (TCPI) and the Rural Tourism Accommodation Price Index (RTAPI).

Methodological note

The main objective of the Holiday Dwelling Occupancy Survey (HDOS) is to ascertain the behaviour of a series of variables that make it possible to describe the segment that occupies this type of accommodation within the tourist sector, both from the point of view of supply and demand.

The Holiday Dwelling Price Index (HDPI) is a statistical measure of the monthly evolution of the prices that holiday dwelling establishments apply to their clients.

Type of operation: monthly continuous survey.

Population scope: holiday dwelling establishments and/or companies operating holiday dwellings.

Geographical scope: the entire national territory, with the exception of Ceuta and Melilla where there are no establishments of this type.

Reference period of the results: the month.

Reference period of the information: The consultation of basic data refers to a fortnight of the month, chosen randomly, in such a way that among all the establishments they cover the complete month.

Type of sampling: stratified sampling by province and size of establishment, and for Canarias and Illes Balears stratified at island-size level.

Collection method: questionnaire filled in directly by the establishment.

For more information on these statistical operations, you can consult the [methodology and the standardised methodological report](#) for each of them in INEbase.

The main objective of the Campsite Occupancy Survey (COS) is to ascertain the behaviour of a series of variables that make it possible to describe the segment that occupies this type of accommodation within the tourist sector, both from the point of view of supply and demand. The Tourist Campsite Price Index (TCPI) is a statistical measure of the monthly evolution of the prices that campsites apply to their clients.

Type of operation: monthly continuous survey.

Population scope: camping establishments.

Geographical scope: the entire national territory, with the exception of Ceuta and Melilla where there are no establishments of this type.

Reference period of the results: the month.

Reference period of the information: seven consecutive days of each month, chosen randomly in such a way that all the establishments cover the whole month.

Sample size: approximately 1200 establishments.

Type of sampling: comprehensive survey in all provinces.

Collection method: questionnaire filled in directly by the establishment.

For more information on these statistical operations, you can consult the [methodology and the standardised methodological report](#) for each of them in INEbase.

The main objective of the Rural Tourism Accommodation Occupancy Survey (RTAOS) is to ascertain the behaviour of a series of variables that make it possible to describe the fundamental characteristics of this type of accommodation within the tourist sector, both from the point of view of supply and demand.

The Rural Tourism Accommodation Price Index (RTAPI) is a statistical measure of the monthly evolution of the prices that entrepreneurs of this type of accommodation apply to their clients.

Type of operation: monthly continuous survey.

Population scope: rural tourism establishments registered as such in the corresponding register of each Autonomous Community.

Geographical scope: the entire national territory, with the exception of Ceuta and Melilla where there are no establishments of this type.

Reference period of the results: the month.

Reference period of the information: The consultation of basic data refers to all the days of the month.

Type of sampling: comprehensive survey in all provinces except those where the population size is large enough to take a sample.

Collection method: questionnaire filled in directly by the establishment.

For more information on these statistical operations, you can consult the [methodology and the standardised methodological report](#) for each of them in INEbase.

The main objective of the Hostels Occupancy Survey (HOS) is to ascertain the behaviour of a series of variables that make it possible to describe the fundamental characteristics of this type of accommodation within the tourist sector, both from the point of view of supply and demand.

For more information on this statistical operation, you can consult the [methodology and the standardised methodological report](#) in INEbase.

For further information see **INEbase: www.ine.es/en/** Twitter: **@es_ine**

All press releases at: **www.ine.es/en/prensa/prensa_en.htm**

Press office: Telephone numbers: (+34) 91 583 93 63 /94 08 – **gprensa@ine.es**

Information Area: Telephone number: (+34) 91 583 91 00 – **www.ine.es/infoine/?L=1**

Tourist Accommodation Occupancy Survey (Holiday Dwellings)

July 2019

Provisional data

30th August 2019

1. Travellers, overnight stays and average stay by Autonomous Cities and Communities

Autonomous Cities and Communities	Travellers			Overnight stays			Average stay
	Total	Residents in Spain	Residents abroad	Total	Residents in Spain	Residents abroad	
TOTAL	1.614.808	674.616	940.192	9.851.975	3.390.359	6.461.617	6,10
Andalucía	313.579	159.677	153.902	1.495.372	697.916	797.456	4,77
Aragón	19.054	14.687	4.367	69.166	52.744	16.423	3,63
Asturias, Principado de	13.372	12.114	1.258	63.222	58.391	4.831	4,73
Balears, Illes	289.216	44.524	244.691	1.803.221	228.148	1.575.073	6,23
Canarias	328.865	92.660	236.205	2.560.756	439.742	2.121.014	7,79
Cantabria	27.028	24.646	2.382	115.202	103.247	11.955	4,26
Castilla y León	20.592	16.443	4.149	52.349	40.590	11.759	2,54
Castilla - La Mancha	10.236	9.425	811	35.250	31.783	3.467	3,44
Cataluña	196.645	67.424	129.222	1.239.997	360.223	879.774	6,31
Comunitat Valenciana	265.959	151.143	114.816	1.856.418	1.022.064	834.354	6,98
Extremadura	13.212	11.634	1.578	26.841	23.931	2.910	2,03
Galicia	23.891	20.796	3.095	111.755	100.433	11.322	4,68
Madrid, Comunidad de	46.986	20.734	26.252	188.755	76.269	112.486	4,02
Murcia, Región de	17.433	13.294	4.139	131.469	106.385	25.084	7,54
Navarra, Comunidad Foral de	8.533	5.070	3.463	20.612	12.755	7.857	2,42
País Vasco	15.609	6.673	8.936	70.213	26.813	43.400	4,50
Rioja, La	4.599	3.672	927	11.377	8.925	2.452	2,47
Ceuta	-	-	-	-	-	-	-
Melilla	-	-	-	-	-	-	-
Annual rate	0,47	1,83	-0,49	-1,41	-0,56	-1,85	-1,87
Cumulative annual rate	0,57	4,16	-1,45	-2,58	1,17	-3,80	-3,14

2. Capacity, occupancy and number of staff by Autonomous Cities and Communities

Autonomous Cities and Communities	Capacity		Level of occupancy				Employed personnel
	Estimated bedplaces	Estimated Holiday dwelling	Per bedplaces	Per bedplaces at weekend	Per Holiday dwelling	Per Holiday dwelling at weekend	
TOTAL	626.397	161.237	50,08	53,59	65,75	69,81	35.737
Andalucía	91.356	22.804	52,64	57,18	66,98	72,34	6.071
Aragón	8.228	1.886	27,06	37,75	38,36	50,57	551
Asturias, Principado de	5.354	1.390	37,89	44,87	46,14	55,69	464
Balears, Illes	77.072	24.318	73,10	74,22	85,87	86,93	6.887
Canarias	143.715	44.615	56,44	59,40	69,06	72,74	10.851
Cantabria	7.095	1.811	51,75	58,84	70,60	79,61	601
Castilla y León	5.928	1.350	28,38	46,16	39,01	55,58	555
Castilla - La Mancha	5.571	1.394	20,34	35,61	30,42	47,16	476
Cataluña	86.603	18.648	46,02	49,11	61,69	65,49	2.533
Comunitat Valenciana	155.943	32.188	38,24	40,76	53,22	56,19	4.012
Extremadura	3.152	741	27,37	40,33	36,21	51,06	395
Galicia	7.306	1.921	49,04	53,47	60,77	65,59	523
Madrid, Comunidad de	10.688	3.862	56,49	61,84	74,77	80,51	670
Murcia, Región de	10.168	2.333	41,69	45,62	59,00	64,74	325
Navarra, Comunidad Foral de	2.168	471	30,43	39,11	44,12	53,86	435
País Vasco	4.313	1.122	51,97	57,27	71,83	77,70	264
Rioja, La	1.737	382	21,11	41,34	34,96	59,62	124
Ceuta	-	-	-	-	-	-	-
Melilla	-	-	-	-	-	-	-
Annual rate	-3,03	-1,66	1,90	1,79	-0,33	-0,24	2,57
Cumulative annual rate	-0,61	-0,37	-1,78	-0,51	-2,00	-0,98	-0,08

3. Travellers, overnight stays, capacity, occupancy, total number of staff with greater number of overnight stays¹

Provinces	Travellers		Overnight stays			Capacity		Level of occupancy			Employed personnel
	Residents in Spain	Residents abroad	Residents in Spain	Residents abroad	Average stay	Estimated bed-places	Estimated holiday dwelling	Per bed-places	Per Holiday dwelling	Per Holiday dwelling at weekend	
Palmas, Las	55.804	146.535	273.747	1.324.792	7,90	90.830	27.475	55,54	69,96	73,62	6.841
Alicante\Alacant	54.834	79.156	365.043	622.390	7,37	99.225	20.875	32,08	47,87	50,38	2.586
Santa Cruz de Tenerife	36.856	89.669	165.995	796.222	7,60	52.884	17.140	58,00	67,62	71,33	4.010
Málaga	49.065	105.987	218.492	655.925	5,64	48.154	11.981	58,21	74,95	77,96	3.448
Girona	22.915	55.011	143.890	426.531	7,32	42.429	8.813	43,35	58,24	61,89	888
Tarragona	31.669	43.055	167.223	337.137	6,75	31.162	6.180	51,91	71,05	74,56	1.009
Castellón\Castelló	64.441	12.439	378.151	83.808	6,01	33.630	6.476	44,24	59,77	64,32	675
Valencia\València	31.867	23.221	278.870	128.156	7,39	23.088	4.837	55,96	67,55	70,40	751
Almería	38.192	5.392	201.147	32.165	5,35	13.583	3.141	56,09	71,00	77,44	556
Barcelona	9.146	30.902	38.597	114.994	3,84	10.289	3.045	47,69	61,16	64,04	563
Cádiz	20.255	6.483	91.294	21.239	4,21	6.934	1.789	52,25	65,94	76,75	446
Huelva	17.185	1.128	88.751	6.422	5,20	6.162	1.432	49,71	59,05	66,88	276
Sevilla	11.919	22.094	29.946	56.662	2,55	6.481	1.873	42,88	59,40	62,46	499
Granada	14.767	10.765	45.269	20.828	2,59	6.177	1.598	34,25	41,87	51,32	578
Pontevedra	8.852	1.006	53.649	5.116	5,96	3.436	827	54,84	70,02	73,25	224

¹ Provinces belonging to uniprovincial Autonomous Communities have not been included because they are reflected in previous tables.

4. Travellers, overnight stays, capacity, occupancy, total number of staff from tourist areas with greater number of overnight stays

Tourist Areas	Travellers		Overnight stays			Capacity		Level of occupancy			Employed personnel
	Residents in Spain	Residents abroad	Residents in Spain	Residents abroad	Average stay	Estimated bed-places	Estimated holiday dwelling	Per bed-places	Per Holiday dwelling	Per Holiday dwelling at weekend	
Costa Blanca	52.833	78.636	353.256	620.339	7,41	96.932	20.454	32,38	48,21	50,61	2.479
Isla de Mallorca	9.515	116.564	50.453	873.041	7,32	37.269	12.184	76,47	86,50	87,29	3.146
Isla de Tenerife	28.280	86.385	128.717	761.239	7,76	46.877	15.104	60,47	69,97	73,32	3.503
Costa del Sol	44.819	100.148	209.124	624.692	5,75	44.976	11.141	59,41	76,66	79,14	3.316
Isla de Gran Canaria	35.492	65.360	165.008	586.030	7,45	45.045	13.624	52,96	65,70	70,89	3.235
Isla de Lanzarote	10.095	60.905	57.850	553.467	8,61	31.639	9.353	60,50	79,31	81,11	2.578
Costa Brava	20.294	54.559	132.288	424.269	7,44	40.992	8.474	43,72	58,69	62,07	773
Costa Daurada	30.472	41.632	161.824	329.443	6,81	30.058	5.954	52,43	71,87	75,27	975
Islas de Ibiza-Formentera	16.728	85.174	69.148	420.502	4,81	22.529	7.307	69,05	85,27	86,99	2.504
Costa de Castellón	62.628	12.316	369.667	83.233	6,04	32.062	6.114	45,49	61,29	65,95	585

5. Travellers, overnight stays, capacity, occupancy, total number of staff from tourist sites with greater number at overnights stays

Tourist sites	Travellers		Overnight stays			Capacity		Level of occupancy			Employed personnel
	Residents in Spain	Residents abroad	Residents in Spain	Residents abroad	Average stay	Estimated bed-places	Estimated holiday dwelling	Per bed-places	Per Holiday dwelling	Per Holiday dwelling at weekend	
San Bartolomé de Tirajana	26.474	36.161	126.607	328.226	7,26	28.305	8.784	50,99	62,66	68,80	2.045
Arona	5.659	39.702	29.426	342.132	8,19	18.707	6.114	63,52	70,11	71,82	1.458
Tías	4.982	33.305	29.880	309.214	8,86	16.563	5.117	63,51	78,72	80,94	1.236
Benidorm	16.043	33.227	91.671	221.022	6,35	29.929	6.944	33,65	60,02	65,01	874
Mogán	7.373	27.408	33.806	246.860	8,07	15.432	4.265	57,83	74,41	78,15	1.112
Adeje	5.062	24.784	24.269	238.722	8,81	14.044	4.532	59,75	68,77	70,71	934
Ciudadella de Menorca	9.348	28.587	60.724	181.690	6,39	10.264	3.020	73,22	84,94	84,82	812
Alcúdia	3.098	30.260	17.014	221.148	7,14	7.604	2.763	95,38	95,25	95,18	674
Calvià	1.631	28.555	5.123	213.405	7,24	9.351	3.159	74,60	86,80	88,91	706
Salou	16.093	22.310	71.657	143.981	5,62	14.911	2.875	46,03	67,70	70,78	344

6. Travellers and overnight stays by countries of residence

Countries	Travellers		Overnight stays	
	Total	%	Total	%
TOTAL	1.614.808	100,00	9.851.975	100,00
Residents in Spain	674.616	41,78	3.390.359	34,41
Residents abroad	940.192	58,22	6.461.617	65,59
Total residents abroad	940.192	100,00	6.461.617	100,00
Total residents in E.U (excluding Spain)	788.829	83,90	5.643.548	87,34
- Germany	74.419	7,92	655.558	10,15
- Austria	4.114	0,44	23.792	0,37
- Belgium	19.917	2,12	150.276	2,33
-Denmark	23.357	2,48	162.910	2,52
- Finland	6.857	0,73	41.280	0,64
- France	99.498	10,58	642.967	9,95
- Greece	1.037	0,11	4.430	0,07
- Ireland	57.158	6,08	480.891	7,44
- Italy	56.883	6,05	286.331	4,43
- Luxembourg	512	0,05	2.684	0,04
- Netherlands	62.666	6,67	432.385	6,69
- Poland	11.513	1,22	77.349	1,20
- Portugal	13.093	1,39	62.464	0,97
- United Kingdom	315.204	33,53	2.335.456	36,14
- Czech Republic	4.016	0,43	34.260	0,53
- Sweden	22.611	2,40	157.550	2,44
- Other EU countries	15.971	1,70	92.966	1,44
Norway	16.456	1,75	130.634	2,02
Russia	13.913	1,48	136.100	2,11
Switzerland	13.115	1,39	86.226	1,33
Other european countries	11.020	1,17	72.963	1,13
United States of America	24.624	2,62	93.021	1,44
Rest of America	25.685	2,73	110.057	1,70
African countries	12.669	1,35	60.536	0,94
Other countries	33.881	3,60	128.532	1,99

Tourist Accommodation Occupancy Survey Campsite Occupancy Survey (COS)

July 2019

Provisional data

30th August 2019

1. Travellers, overnight stays and average stay by category of establishment

Category	Travellers			Overnight stays			Average stay
	Total	Residents in Spain	Residents abroad	Total	Residents in Spain	Residents abroad	
TOTAL	1,531,650	1,004,656	526,994	7,774,298	4,239,738	3,534,560	5.08
Luxury and first-class	687,716	417,965	269,751	3,766,207	1,827,471	1,938,736	5.48
Second-class	696,873	481,694	215,179	3,326,566	1,970,386	1,356,180	4.77
Third-class	147,061	104,997	42,064	681,524	441,881	239,644	4.63
Annual rate	-1.11	1.06	-5.02	-0.30	1.05	-1.87	0.83
Cumulative annual rate	5.51	7.78	1.35	2.90	5.50	0.46	-2.47

2. Open establishments, capacity, occupancy and number of staff by category of establishments

Category	Estimated open establishments	Capacity		Occupied pitches	Occupancy rate per pitch	Weekend occupancy rate	Employed personnel
		Estimated bedplaces	Estimated pitches				
TOTAL	1,180	756,987	229,304	3,345,213	47.06	51.04	14,042
Luxury and first-class	294	320,578	93,687	1,435,066	49.41	53.27	6,875
Second-class	650	351,091	109,485	1,535,232	45.23	49.19	5,800
Third-class	235	85,318	26,132	374,914	46.28	50.80	1,367
Annual rate	-0.29	-0.70	-1.31	-1.21	0.10	-1.21	4.37
Cumulative annual rate	-0.36	-0.55	-0.59	0.62	1.28	2.07	1.72

3. Travellers, overnight stays and average stay by Autonomous Cities and Communities

Autonomous cities and communities	Travellers			Overnight stays			Average stay
	Total	Residents in Spain	Residents abroad	Total	Residents in Spain	Residents abroad	
TOTAL	1,531,650	1,004,656	526,994	7,774,298	4,239,738	3,534,560	5.08
Andalucía	183,053	158,722	24,331	673,231	569,867	103,365	3.68
Aragón	82,915	52,705	30,211	264,834	168,519	96,315	3.19
Asturias, Principado de	53,442	38,382	15,060	216,666	174,636	42,030	4.05
Balears, Illes ¹	-	-	-	-	-	-	-
Canarias ¹	-	-	-	-	-	-	-
Cantabria	70,481	47,269	23,212	295,026	226,410	68,616	4.19
Castilla y León	58,233	44,354	13,879	190,017	168,261	21,756	3.26
Castilla - La Mancha	22,858	20,111	2,747	63,560	57,824	5,736	2.78
Cataluña	632,759	321,158	311,601	3,950,209	1,383,213	2,566,996	6.24
Comunitat Valenciana	140,272	104,567	35,705	1,004,320	602,357	401,962	7.16
Extremadura	18,245	16,806	1,439	62,788	58,658	4,130	3.44
Galicia	75,768	60,346	15,422	319,478	279,778	39,701	4.22
Madrid, Comunidad de	38,194	34,037	4,157	163,401	151,864	11,537	4.28
Murcia, Región de	21,641	17,880	3,761	121,991	87,696	34,296	5.64
Navarra, Comunidad Foral de	31,553	24,731	6,822	101,384	90,045	11,339	3.21
País Vasco	56,107	26,246	29,861	166,719	93,571	73,148	2.97
Rioja, La	33,733	31,148	2,586	105,321	100,648	4,673	3.12
Ceuta	-	-	-	-	-	-	-
Melilla	-	-	-	-	-	-	-

¹ The size of the sample in these communities does not facilitate the INE the broken down results, with the objective of maintaining statistical secrecy. Nevertheless, the data corresponding to these communities are included in the national total.

4. Open establishments, capacity, occupancy and number of staff by autonomous cities and communities

Autonomous cities and communities	Estimated open establishments	Capacity		Occupied pitches	Occupancy rate per pitch	Weekend occupancy rate	Employed personnel
		Estimated bedplaces	Estimated pitches				
TOTAL	1,180	756,987	229,304	3,345,213	47.06	51.04	14,042
Andalucía	146	81,730	26,033	257,955	31.96	44.70	1,408
Aragón	99	32,774	9,999	122,025	39.37	45.38	672
Asturias, Principado de	52	27,108	8,383	108,607	41.79	43.75	403
Balears, Illes ¹	-	-	-	-	-	-	-
Canarias ¹	-	-	-	-	-	-	-
Cantabria	49	35,505	11,231	162,962	46.81	48.07	395
Castilla y León	89	37,118	11,545	103,080	28.80	33.53	368
Castilla - La Mancha	30	11,903	3,516	33,005	30.28	37.07	191
Cataluña	333	322,445	93,762	1,576,805	54.25	56.39	6,349
Comunitat Valenciana	131	81,590	25,165	445,928	57.16	60.43	1,906
Extremadura	26	9,999	3,261	31,110	30.78	39.80	265
Galicia	114	37,790	12,142	132,563	35.22	40.42	728
Madrid, Comunidad de	20	18,003	6,224	108,853	56.42	59.82	333
Murcia, Región de	15	14,326	4,719	51,737	35.37	28.49	242
Navarra, Comunidad Foral de	26	14,620	3,754	56,370	48.43	53.47	255
País Vasco	27	13,444	3,970	69,556	56.52	60.84	296
Rioja, La	9	8,399	2,455	54,219	71.24	77.72	90
Ceuta	-	-	-	-	-	-	-
Melilla	-	-	-	-	-	-	-

¹ The size of the sample in these communities does not facilitate the INE the broken down results, with the objective of maintaining statistical secrecy. Nevertheless, the data corresponding to these communities are included in the national total.

5. Travellers and overnight stays, average stay, capacity, occupancy and number of staff by provinces with the greatest number of overnight stays¹

Provinces	Travellers		Overnight stays		Average stay	Estimated open establishments	Estimated pitches	Occupancy rate per pitch	Employed personnel
	Residents in Spain	Residents abroad	Residents in Spain	Residents abroad					
	Spain		Spain						
Girona	105,864	186,556	419,135	1,643,970	7.06	137	44,326	53.26	3,642
Tarragona	116,437	74,426	569,930	615,444	6.21	64	24,895	58.72	1,654
Barcelona	73,663	42,026	310,906	281,257	5.12	76	17,006	58.29	790
Alicante\Alacant	41,472	21,421	219,180	317,763	8.54	51	11,592	67.35	1,050
Cádiz	61,020	6,704	228,424	25,247	3.75	29	7,085	40.42	383
Valencia\València	34,040	7,681	201,268	39,976	5.78	38	6,445	52.43	398
Castellón\Castelló	29,055	6,603	181,910	44,223	6.34	42	7,128	44.87	457
Huesca	42,769	24,432	140,416	81,459	3.30	65	7,262	45.51	523
Pontevedra	40,340	7,753	175,459	22,007	4.11	45	6,158	39.24	419
Málaga	26,422	5,521	106,456	39,527	4.57	31	4,835	42.75	279
Gipuzkoa	18,490	23,454	54,361	59,476	2.71	17	2,603	54.64	180
Lleida	25,194	8,593	83,243	26,324	3.24	56	7,535	36.19	262
Coruña, A	14,637	4,891	88,463	12,664	5.18	49	4,393	33.42	231
Huelva	25,717	1,910	77,368	6,182	3.02	12	4,481	19.91	226
Almería	17,471	3,143	67,312	14,705	3.98	22	2,866	30.56	173

¹ Provinces belonging to uniprovincial Autonomous Communities have not been included because they are reflected in previous tables.

6. Travellers, overnight stays, average stay, open establishments, capacity, occupancy and number of staff from tourist areas with the greatest number of overnight stays

Tourist areas	Travellers		Overnight stays		Average stay	Estimated open establishments	Estimated pitches	Occupancy rate per pitch	Employed personnel
	Residents in	Residents abroad	Residents in	Residents abroad					
	Spain		Spain						
Costa Brava	81,749	183,769	351,620	1,629,618	7.46	101	40,092	54.22	3,423
Costa Daurada	101,938	68,355	497,614	570,523	6.27	50	21,788	60.15	1,477
Costa Barcelona	53,876	40,740	245,610	277,568	5.53	47	13,322	59.13	566
pn Aiguamolls de l'Empordá	11,720	47,132	91,996	428,356	8.84	22	10,186	56.78	1,002
Costa Blanca	32,127	18,561	164,928	270,334	8.59	42	9,229	71.78	974
Costa de la Luz (Cádiz)	59,188	6,285	220,776	21,620	3.70	25	6,452	41.82	358
Rías Baixas	49,098	9,648	207,881	27,645	4.01	58	7,859	36.65	533
Pirineo Aragonés	43,414	24,434	141,993	81,613	3.30	61	7,011	45.64	516
Pirineus	59,079	11,140	181,477	40,487	3.16	99	12,898	43.22	607
Costa de Castellón	25,070	6,403	166,344	42,094	6.62	33	6,279	46.43	415
Costa Valencia	23,616	5,676	170,594	30,448	6.86	20	4,412	60.98	262
Costa Verde	33,383	12,847	158,426	35,544	4.20	43	7,264	43.56	364
Costa del Sol	21,115	3,987	92,969	34,614	5.08	15	3,506	48.92	215
Terres de l'Ebre	14,498	6,071	72,315	44,922	5.70	14	3,107	48.69	178
Costa de Gipuzkoa	17,441	21,992	51,898	56,338	2.74	14	2,331	57.72	159

7. Travellers, overnight stays, average stay, open establishments, capacity, occupancy and number of staff from tourist sites with the greatest number at overnights stays

Tourist sites	Travellers		Overnight stays		Average stay	Estimated open establishments	Estimated pitches	Occupancy rate per pitch	Employed personnel
	Residents in	Residents abroad	Residents in	Residents abroad					
	Spain		Spain						
Torroella de Montgrí	5,786	33,300	30,759	305,863	8.61	9	4,769	71.32	589
Mont-roig del Camp	15,113	18,673	88,622	165,119	7.51	6	4,209	52.24	324
Sant Pere Pescador	4,922	20,645	41,136	177,136	8.54	7	3,676	67.62	461
Pals	3,743	20,703	14,428	200,401	8.79	5	3,121	61.36	300
Benidorm	7,594	6,613	39,072	157,447	13.83	11	4,240	81.87	382
Tarragona	17,921	11,446	105,474	86,054	6.52	7	3,053	68.23	278
Calonge	3,824	18,840	18,651	169,398	8.30	5	3,403	53.66	282
Castelló D'Empúries	2,587	16,109	24,052	157,342	9.70	5	3,406	59.00	356
Blanes	9,769	13,327	43,549	136,765	7.81	11	3,292	69.86	310
Cambrils	16,649	6,891	77,873	55,516	5.67	6	3,123	56.98	141
Castell-Platja d'Aro	9,403	7,908	37,789	74,044	6.46	4	3,212	42.00	120
Malgrat De Mar	5,123	7,215	50,772	58,521	8.86	8	1,801	71.23	130

8. Travellers and overnight stays by countries of residence

Countries	Travellers		Overnight stays	
	Total	%	Total	%
TOTAL	1,531,650	100.00	7,774,298	100.00
Residents in Spain	1,004,656	65.59	4,239,738	54.54
Residents abroad	526,994	34.41	3,534,560	45.46
TOTAL residents abroad	526,994	100.00	3,534,560	100.00
TOTAL residents in EU (excluding Spain)	497,973	94.49	3,421,423	96.80
- Germany	57,589	10.93	337,133	9.54
- Austria	2,516	0.48	6,965	0.20
- Belgium	37,034	7.03	339,203	9.60
- Denmark	4,642	0.88	39,778	1.13
- Finland	587	0.11	3,694	0.10
- France	156,278	29.65	919,836	26.02
- Greece	131	0.02	359	0.01
- Ireland	17,019	3.23	158,096	4.47
- Italy	13,952	2.65	42,406	1.20
- Luxembourg	488	0.09	2,841	0.08
- Netherlands	143,460	27.22	1,113,249	31.50
- Poland	3,947	0.75	22,500	0.64
- Portugal	12,211	2.32	33,859	0.96
- United Kingdom	39,324	7.46	369,928	10.47
- Czech Republic	2,018	0.38	4,860	0.14
- Sweden	2,587	0.49	13,583	0.38
- Other EU countries	4,191	0.80	13,132	0.37
Norway	723	0.14	6,119	0.17
Russia	685	0.13	3,427	0.10
Switzerland	11,004	2.09	46,976	1.33
Other European countries	5,121	0.97	21,628	0.61
United States of America	1,285	0.24	4,204	0.12
Rest of America	2,583	0.49	8,784	0.25
African countries	1,004	0.19	2,845	0.08
Other countries	6,616	1.26	19,154	0.54

COS (TABLES ANNEX) - July 2019. Provisional data (4/4)

**Tourist accommodation occupancy survey
(Rural tourist accommodation)**

July 2019

Provisional data

30th August 2019

1. Number of travellers, overnight stays and average stay by Autonomous City and Community

Autonomous Communities	Number of travellers			Number of overnight stays			Average stay
	Total	Residents In Spain	Residents abroad	Total	Residents In Spain	Residents abroad	
TOTAL	519.997	393.502	126.496	1.623.062	1.094.504	528.558	3,12
Andalucía	51.927	32.737	19.190	211.536	86.977	124.559	4,07
Aragón	20.557	16.684	3.873	73.002	54.452	18.550	3,55
Asturias, Principado de	48.556	42.248	6.308	193.917	170.317	23.600	3,99
Balears, Illes	46.024	7.656	38.368	195.429	24.184	171.245	4,25
Canarias	4.910	2.823	2.088	24.418	9.762	14.656	4,97
Cantabria	42.801	37.654	5.146	110.362	95.957	14.406	2,58
Castilla y León	88.326	75.990	12.337	202.967	179.718	23.249	2,30
Castilla-La Mancha	28.582	26.384	2.197	69.163	65.112	4.052	2,42
Cataluña	51.876	38.029	13.847	169.783	100.242	69.541	3,27
Comunitat Valenciana	20.150	17.681	2.469	74.912	64.050	10.862	3,72
Extremadura	24.628	23.051	1.578	53.951	50.105	3.846	2,19
Galicia	29.303	20.588	8.716	65.190	48.405	16.786	2,22
Madrid, Comunidad de	15.769	15.137	632	30.265	28.827	1.438	1,92
Murcia, Región de	6.759	6.067	692	15.972	13.416	2.555	2,36
Navarra, Comunidad Foral de	14.915	12.576	2.339	60.843	50.206	10.637	4,08
País Vasco	21.247	15.048	6.199	62.925	45.416	17.509	2,96
Rioja, La	3.667	3.150	517	8.428	7.360	1.068	2,30
Ceuta	-	-	-	-	-	-	-
Melilla	-	-	-	-	-	-	-
Annual rate	7,55	10,27	-0,10	4,64	8,04	-1,73	-2,71
Cumulative annual rate	4,23	5,08	1,10	2,82	4,98	-2,06	-1,35

2. Open rural establishments, bed-places, occupancy rates and employed personnel by Autonomous City and Community

Autonomous Communities	Estimated open rural establishments	Estimated bed-places	Occupancy rate			Employed personnel
			Of bed-places	Of bed-places at weekend	Of bedrooms	
TOTAL	18.092	177.761	29,23	44,48	35,30	28.596
Andalucía	2.616	21.594	31,45	43,63	40,16	4.009
Aragón	1.222	9.730	24,03	37,51	30,28	1.404
Asturias, Principado de	1.513	15.431	40,44	46,82	48,80	2.308
Balears, Illes	535	10.389	59,79	63,31	66,45	2.907
Canarias	512	3.175	24,74	29,00	37,61	758
Cantabria	534	8.625	40,88	57,13	49,12	1.095
Castilla y León	3.642	32.672	19,90	39,85	25,07	5.092
Castilla-La Mancha	1.673	14.414	15,31	37,65	18,07	2.210
Cataluña	2.097	18.904	28,82	49,33	34,51	2.907
Comunitat Valenciana	876	10.553	22,77	31,74	25,00	1.309
Extremadura	637	7.743	22,45	44,61	27,85	1.068
Galicia	503	6.558	31,70	42,94	35,10	941
Madrid, Comunidad de	242	3.808	25,58	51,95	34,78	684
Murcia, Región de	147	2.418	21,22	49,71	24,70	250
Navarra, Comunidad Foral de	846	6.407	30,50	42,96	37,29	1.036
País Vasco	382	4.191	47,25	58,35	53,50	497
Rioja, La	114	1.149	23,45	49,59	24,76	122
Ceuta	-	-	-	-	-	-
Melilla	-	-	-	-	-	-
Annual rate	1,98	2,39	2,38	0,88	2,26	4,93
Cumulative annual rate	1,95	1,88	1,05	0,80	2,04	3,58

3. Number of travellers, overnight stays and average stay in Provinces with the greatest number of overnight stays¹

Provinces	Number of travellers			Number of overnight stays			Average stay
	Total	Residents In Spain	Residents abroad	Total	Residents In Spain	Residents abroad	
Málaga	20.942	7.751	13.191	131.429	32.917	98.512	6,28
Girona	22.942	15.791	7.151	80.867	43.475	37.392	3,52
Barcelona	16.149	11.569	4.580	51.844	30.366	21.478	3,21
Huesca	12.624	9.449	3.175	46.631	33.221	13.409	3,69
Cáceres	20.260	19.109	1.151	44.934	42.256	2.678	2,22
Ávila	14.328	13.539	789	40.775	37.731	3.044	2,85
Gipuzkoa	11.124	7.718	3.405	36.736	26.198	10.539	3,30
León	18.753	11.982	6.771	34.674	25.689	8.985	1,85
Valencia\València	8.308	7.343	965	33.223	29.633	3.590	4,00
Burgos	10.875	9.418	1.457	25.125	21.712	3.412	2,31
Alicante\Alacant	7.154	5.800	1.354	22.718	17.249	5.469	3,18
Coruña, A	10.361	6.231	4.130	22.705	15.330	7.375	2,19
Segovia	9.069	8.564	505	22.206	20.667	1.540	2,45
Salamanca	9.612	8.705	907	21.623	19.577	2.046	2,25
Pontevedra	7.750	6.208	1.542	21.265	16.510	4.755	2,74

¹ Provinces belonging to uniprovincial Autonomous Communities have not been included because they are reflected in previous tables.

4. Open rural establishments, bed-places, occupancy rates and employed personnel in Provinces with the highest number of overnight stays¹

Provinces	Estimated open rural establishments	Estimated bed-places	Occupancy rate			Employed personnel
			Of bed-places	Of bed-places at weekend	Of bedrooms	
Málaga	1.529	10.365	40,72	50,02	51,37	2.221
Girona	677	7.026	36,90	52,69	42,40	801
Barcelona	621	5.383	30,91	60,32	38,26	1.035
Huesca	651	4.941	30,21	43,10	37,22	750
Cáceres	513	6.263	23,11	45,11	28,52	883
Ávila	771	6.253	20,96	45,07	26,10	918
Gipuzkoa	178	2.011	57,08	63,15	64,77	228
León	510	4.283	25,38	39,43	29,36	831
Valencia\València	237	4.050	26,28	34,37	26,03	390
Burgos	427	4.229	19,14	39,59	30,78	584
Alicante\Alacant	195	2.432	29,90	47,73	35,62	298
Coruña, A	142	1.878	38,51	48,63	44,39	255
Segovia	423	3.998	17,89	43,98	23,01	617
Salamanca	532	4.230	16,45	33,51	18,98	722
Pontevedra	149	1.903	35,56	45,95	37,49	262

¹ Provinces belonging to uniprovincial Autonomous Communities have not been included because they are reflected in previous tables.

5. Number of travellers, overnight stays, average stay, capacity and occupancy rates in areas with the highest number of overnight stays

Areas	Number of travellers		Number of overnight stays			Capacity		Occupancy rate		
	Residents In Spain	Residents abroad	Residents In Spain	Residents abroad	Average stay	Estimated open rural establish.	Estimated bed-places	Of bed-places	Of bed-places at weekend	Of bedrooms
Isla de Mallorca	4.885	31.147	14.857	142.401	4,36	446	8.636	57,87	59,32	64,84
Costa Verde (Asturias)	15.673	2.463	75.589	9.881	4,71	558	6.159	44,68	50,38	53,92
Costa Brava	9.971	6.294	29.106	33.126	3,83	435	4.534	43,97	58,91	50,89
P.Nacional Picos de Europa	13.693	2.959	47.294	9.729	3,42	327	3.259	55,70	64,03	62,10
Pirineo Navarro	10.842	1.451	45.011	6.767	4,21	717	5.304	31,34	42,85	38,46
Pirineus	14.316	2.144	38.481	12.628	3,11	800	6.818	24,10	45,73	28,41
Pirineo Aragonés	9.811	3.229	33.484	13.804	3,63	618	4.775	31,68	45,69	39,75
Sierras de Tejeda, Almirajara y Alhama	2.156	5.207	7.411	39.483	6,37	552	3.307	45,61	50,94	60,73
Extremadura Norte	16.726	625	37.272	1.635	2,24	343	4.332	28,94	54,41	36,56
Costa del Sol (Málaga)	2.318	1.855	13.130	14.732	6,68	248	1.667	53,92	83,76	65,94
Isla de Menorca	2.220	4.505	7.587	16.137	3,53	55	1.024	73,31	79,98	77,56
Rías Baixas	5.868	2.017	15.361	5.067	2,59	124	1.571	41,39	51,94	44,68
Costa de Gipuzkoa	3.143	1.910	11.005	6.201	3,40	69	771	69,53	78,85	77,85
Pirineo Vasco	4.272	1.183	13.052	3.268	2,99	119	1.314	39,18	46,58	43,26
Costa Barcelona	2.733	2.298	6.512	9.653	3,21	165	1.505	34,49	55,51	48,62

6. Number of travellers, overnight stays, average stay, capacity, occupancy rates and employed personnel per rural house by Autonomous City and Community²

Autonomous Communities	Number of travellers		Number of overnight stays			Capacity		Occupancy rate		Employed personnel
	Residents In Spain	Residents abroad	Residents In Spain	Residents abroad	Average stay	Estimated open rural establish.	Estimated bed-places	Of bed-places	Of bed-places at weekend	
TOTAL	236.857	70.915	686.866	338.931	3,33	15.285	128.300	25,64	41,77	20.732
Andalucía	32.653	19.031	86.605	124.025	4,08	2.613	21.441	31,54	43,64	4.002
Aragón	13.146	3.305	41.726	15.441	3,48	990	7.735	23,65	37,45	1.152
Asturias, Principado de	14.892	1.820	65.564	8.697	4,44	924	6.314	37,83	44,17	1.168
Balears, Illes	2.747	11.786	8.154	44.420	3,62	185	2.996	56,00	65,18	622
Canarias	1.249	1.340	7.037	11.709	7,24	487	2.442	24,69	26,89	622
Cantabria	7.250	1.360	28.599	6.998	4,13	250	3.237	35,35	47,88	427
Castilla y León	39.826	2.176	116.727	9.605	3,01	3.217	23.916	16,96	36,57	3.814
Castilla-La Mancha	24.641	2.155	57.504	3.880	2,29	1.638	13.436	14,67	37,10	2.128
Cataluña	38.029	13.847	100.242	69.541	3,27	2.097	18.904	28,82	49,33	2.907
Comunitat Valenciana	10.637	2.280	28.114	10.067	2,96	825	7.435	16,49	27,65	1.072
Extremadura	9.875	427	20.854	1.583	2,18	412	4.002	18,07	41,10	611
Galicia	12.555	5.444	32.988	12.011	2,50	363	4.428	32,38	41,41	589
Madrid, Comunidad de	2.063	21	6.507	201	3,22	89	959	22,51	48,98	101
Murcia, Región de	4.874	329	11.656	1.981	2,62	130	1.987	22,04	54,37	197
Navarra, Comunidad Foral de	10.678	1.912	41.298	8.782	3,98	719	5.422	29,67	42,53	884
País Vasco	8.592	3.166	25.929	8.924	2,96	232	2.498	44,01	55,06	314
Rioja, La	3.150	517	7.360	1.068	2,30	114	1.149	23,45	49,59	122
Ceuta	-	-	-	-	-	-	-	-	-	-
Melilla	-	-	-	-	-	-	-	-	-	-

² To facilitate the comparability between data from different Autonomous Communities (and because of the different regulation and different characteristics),

a group called rural house has been created, with those establishments with similar typology (location, capacity, etc...).

The variables included in the previous table have been estimated with that type of establishments.

9. Travellers and overnight stays by country of residence

Results by countries	Travellers		Overnight stays	
	Total	%	Total	%
TOTAL	519.997	100,00	1.623.062	100,00
Residents in Spain	393.502	75,67	1.094.504	67,43
Residents abroad	126.496	24,33	528.558	32,57
Total Residents abroad	126.496	100,00	528.558	100,00
Total Residents in EU (excluding Spain)	96.167	76,02	434.825	82,27
- Germany	22.004	17,40	112.940	21,37
- Belgium	7.358	5,82	34.733	6,57
- France	18.870	14,92	77.085	14,58
- Italy	4.772	3,77	13.709	2,59
- Netherlands	9.885	7,81	47.536	8,99
- Portugal	2.651	2,10	6.860	1,30
- United Kingdom	20.921	16,54	98.112	18,56
Switzerland	3.156	2,49	14.510	2,75
Other European countries	14.812	11,71	60.774	11,50
United States of America	6.857	5,42	20.921	3,96
Other countries	15.210	12,02	41.376	7,83

Tourist Accommodation Occupancy Survey Hostels Occupancy Survey (HOS)

July 2019

Provisional data

30th August 2019

1. Travellers, overnight stays and average stay by Autonomous Cities and Communities

Autonomous cities and communities	Travellers			Overnight stays			Average stay
	Total	Residents in Spain	Residents abroad	Total	Residents in Spain	Residents abroad	
TOTAL	118.826	76.803	42.023	497.354	382.346	115.008	4,19
Andalucía	15.048	13.430	1.618	64.512	60.496	4.016	4,29
Aragón	4.235	3.997	237	24.920	24.410	509	5,88
Asturias, Principado de	-	-	-	-	-	-	-
Balears, Illes	1.753	437	1.316	6.637	1.317	5.320	3,79
Canarias	1.522	597	925	6.850	1.811	5.039	4,50
Cantabria	906	906	0	10.599	10.599	0	11,70
Castilla y León	5.009	4.776	233	28.708	28.007	701	5,73
Castilla - La Mancha	6.464	6.240	224	50.014	49.628	386	7,74
Cataluña	35.852	17.134	18.718	136.011	82.499	53.512	3,79
Comunitat Valenciana	14.104	7.362	6.742	49.809	28.298	21.511	3,53
Extremadura	1.154	1.017	137	7.112	6.904	207	6,16
Galicia	3.701	2.378	1.323	13.448	10.997	2.451	3,63
Madrid, Comunidad de	4.381	1.525	2.856	12.806	8.713	4.093	2,92
Murcia, Región de	1.853	1.506	347	8.347	7.459	888	4,50
Navarra, Comunidad Foral de	3.613	2.486	1.127	12.798	11.406	1.392	3,54
País Vasco	17.606	11.732	5.875	55.990	42.136	13.854	3,18
Rioja, La	976	662	314	3.228	2.908	320	3,31
Ceuta	-	-	-	-	-	-	-
Melilla	-	-	-	-	-	-	-
Annual rate	-1,54	-4,26	3,85	-2,45	-5,54	9,44	-0,92
Cumulative annual rate	-3,19	-6,73	5,35	3,19	-0,07	11,76	6,59

2. Open establishments, capacity, occupancy and number of staff by autonomous cities and communities

Autonomous cities and communities	Capacity		Occupancy rate		Employed personnel
	Estimated open establishments	Estimated bed-places	Of bed-places	Of bed-places at weekend	
TOTAL	284	30.576	52,47	51,90	2.493
Andalucía	20	4.086	50,93	19,93	301
Aragón	26	2.318	34,68	34,44	104
Asturias, Principado de	-	-	-	-	-
Balears, Illes	4	328	65,27	64,86	33
Canarias	29	658	33,59	27,59	57
Cantabria	9	634	53,90	57,95	39
Castilla y León	27	2.539	36,47	43,27	319
Castilla - La Mancha	29	3.329	48,46	47,62	189
Cataluña	52	6.880	63,77	66,36	469
Comunitat Valenciana	16	2.621	61,31	64,69	156
Extremadura	11	856	26,79	29,47	51
Galicia	7	749	57,94	77,11	150
Madrid, Comunidad de	6	633	65,26	76,58	165
Murcia, Región de	5	489	55,06	93,99	30
Navarra, Comunidad Foral de	12	1.035	39,89	45,72	96
País Vasco	21	2.747	65,74	72,03	237
Rioja, La	6	312	33,37	42,19	14
Ceuta	-	-	-	-	-
Melilla	-	-	-	-	-
Annual rate	1,52	1,57	-3,96	-9,15	-0,75
Cumulative annual rate	2,43	1,79	1,51	-2,62	0,56

3. Travellers and overnight stays by countries of residence

Countries	Travellers		Overnight stays		Average stay
	Total	%	Total	%	
TOTAL	118.826	100,00	497.354	100,00	4,19
Residents in Spain	76.803	64,63	382.346	76,88	4,98
Residents abroad	42.023	35,37	115.008	23,12	2,74
TOTAL residents abroad	42.023	100,00	115.008	100,00	2,74
TOTAL residents in E.U. (excluding Spain)	23.978	57,06	65.862	57,27	2,75
- Germany	4.177	9,94	12.103	10,52	2,90
- Belgium	844	2,01	2.289	1,99	2,71
- France	6.177	14,70	18.276	15,89	2,96
- Italy	4.070	9,69	11.542	10,04	2,84
- Netherlands	1.260	3,00	3.168	2,75	2,51
- Portugal	970	2,31	2.098	1,82	2,16
- United Kingdom	3.355	7,98	8.894	7,73	2,65
Switzerland	482	1,15	1.293	1,12	2,68
Other European countries	6.232	14,83	15.800	13,74	2,54
United States of America	3.066	7,30	7.846	6,82	2,56
Other countries	11.389	27,10	31.701	27,56	2,78

HOLIDAY DWELLING PRICE INDEX (HDPI)

July 2019

Provisional data

30th August 2019

National general index and breakdown by rates

	Index	Annual variation rate
TOTAL	167,35	1,60
Normal	154,48	2,20
Weekend	129,95	1,23
Tour-operators and travel agencies	185,26	1,01

National general index and breakdown by modalities

	Index	Annual variation rate
TOTAL	167,35	1,60
Studio	172,49	1,98
Dwellings 2/4 bedplaces	169,99	1,57
Dwellings 4/6 bedplaces	160,72	1,52

Tourist Campsite Price Index (TCSPI). 2002 Base

July 2019

Provisional data

30th August 2019

National general index and breakdown by rates

	Index	Annual variation rate
TOTAL	168,04	2,09
Normal rate	169,87	0,07
Special rate for stays up to one month	96,02	-0,62
Special rate for stays longer than one month	168,38	1,40
Bungalow rate ¹	113,63	4,06

¹2014 Base

National general index and breakdown by categories

	Index	Annual variation rate
TOTAL	168,04	2,09
Luxury and first	174,45	2,74
Second	161,81	1,23
Third	173,72	2,75

TCSPI (ANNEX OF TABLES) - July 2019. Provisional data

Rural Tourism Accommodation Price Index (RTAPI)

July

Provisional data

30th August 2019

General Autonomous Cities and Communities and national indices

	Index	Annual variation rate
TOTAL	148,01	2,51
Andalucía	139,58	4,30
Aragón	170,12	-0,68
Asturias, Principado de	141,35	5,29
Balears, Illes	151,17	0,98
Canarias	118,82	0,41
Cantabria	151,20	-0,56
Castilla y León	140,71	6,46
Castilla - La Mancha	135,83	-3,63
Cataluña	156,89	4,37
Comunitat Valenciana	149,26	-1,16
Extremadura	102,35	-2,97
Galicia	129,94	0,33
Madrid, Comunidad de	143,52	1,83
Murcia, Región de	158,55	17,26
Navarra, Comunidad Foral de	181,54	-6,91
País Vasco	162,20	7,53
Rioja, La	154,11	14,05
Ceuta	-	-
Melilla	-	-

National general index and breakdown by rates

	Index	Annual variation rate
TOTAL	148,01	2,51
Normal	150,49	2,80
Weekend	146,09	2,13

National general index and breakdown by rent modality

	Index	Annual variation rate
TOTAL	148,01	2,51
Shared use (in case of per room rent modality)	142,58	0,33
Full use (rent of entire dwelling)	151,06	3,63