

**Non-Hotel Tourist Accommodation Occupancy Survey**  
August 2014. *Provisional data*

**Overnight stays in non-hotel tourist accommodation increase 4.1%  
in August as compared with the same month of 2013**

Overnight stays in non-hotel tourist accommodation (holiday dwellings, campsites and rural tourism accommodation) exceeded 22.5 millions in August, that is, 4.1% more than in the same month of 2013. Overnight stays of resident travellers increased by 3.5% while those of non-residents did so by 4.6%. The average stay stood at 6.0 overnights per traveller.

In the aggregated period of July and August, overnight stays increased by 1.5%, as compared with the same two-month period of 2013. Overnight stays of resident travellers increased by 2.4% and those of non-residents did so by 0.7%.

During the first eight months of 2014, overnight stays increased by 3.7% as compared with the same period of the previous year.

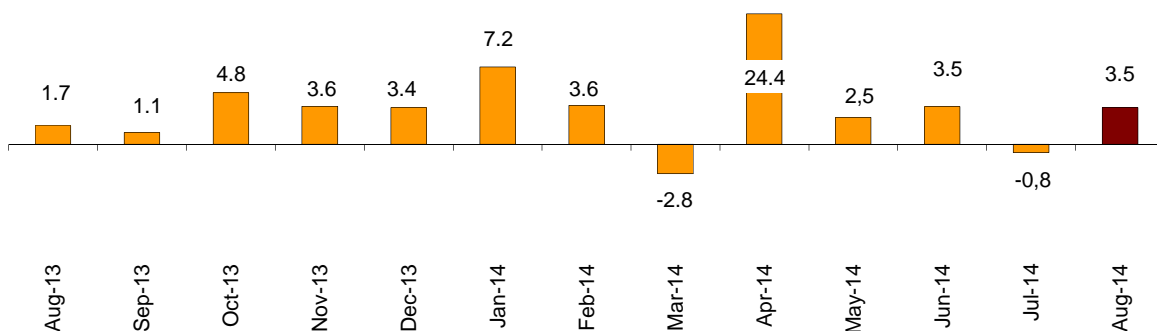
Travellers and overnight stays in collective non-hotel tourist accommodation during the month of August were:

August 2014	Travellers	Overnight stays
Residents in Spain	2,192,462	11,177,940
EU (not including Spain)	1,412,491	10,601,438
Rest of the world	127,355	778,621
<b>TOTAL</b>	<b>3,732,308</b>	<b>22,557,999</b>

**Holiday Dwellings**

Overnight stays in holiday dwellings increased 3.5% in August. Those of residents increased by 3.0% and those of non-residents did so by 3.7%. The average stay decreased by 0.8%, standing at 7.3 overnight stays per traveller.

**Overnight stays annual growth rate in holiday dwellings in %**

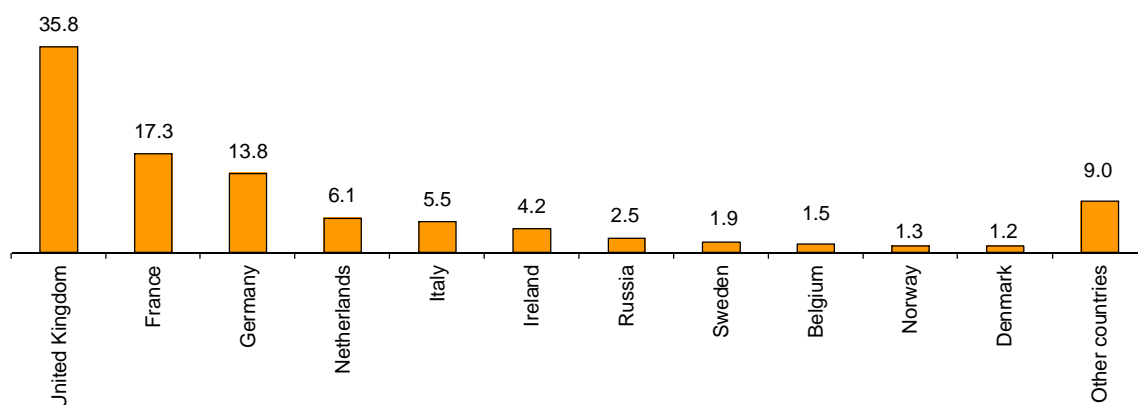


During the months of July and August, overnight stays in holiday dwellings increased by 1.5%, as compared with the same two-month period of 2013.

In August, 62.0% of the bedplaces available for holiday dwellings were occupied, 4.3% more than in the same month of 2013. The weekend occupancy rate by bedplaces stood at 61.9%, with an increase of 4.5%.

Non-resident overnight stays in holiday dwellings represented 65.1% of the total. The United Kingdom was the main country of origin, with more than 2.6 million overnight stays, 4.6% more than in August 2013. The following country of origin was France, with more than 1.2 million overnight stays, that is, a 17.6% increase.

**Distribution of overnight stays of residents abroad of the 11 main countries by origin**



Canarias was the preferred holiday dwelling destination, with more than 3.1 million overnight stays, 2.7% more than in August 2013. Illes Balears registered the highest occupancy rate with 88.6% of the dwellings offered.

By tourist areas, the island of Mallorca was the preferred destination, with more than 1.2 million overnight stays and an occupancy rate of 92.2% of the dwellings offered.

The tourist sites with the greatest number of overnight stays in August were San Bartolomé de Tirajana, Arona and Tías.

## Campsites

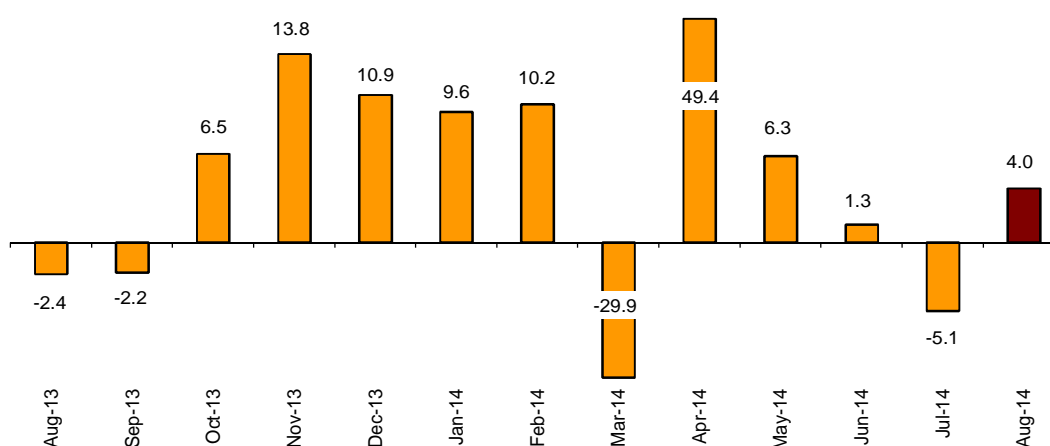
The overnight stays in tourist campsites registered an annual increase of 4.0% in August. Overnight stays of resident travellers increased by 3.2% and those of non-resident travellers did so by 5.3%.

During the period between July and August, overnight stays increased 0.1%.

In August, 52.1% of the offered pitches were occupied, that is, 3.0% more. The weekend occupancy rate by pitch reached 54.5%, with an annual increase of 3.5%.

38.0% of the overnight stays in tourist campsites were by non-residents. France was the main country of origin, with 36.7% of the overnight stays by non-residents, 5.1% more than in August 2013.

Overnight stays annual growth rate in campsites in %



Cataluña was the preferred destination regarding campsites, with over 4.9 million overnight stays, 5.2% more than in August 2013.

La Rioja was the Autonomous Community with the highest occupancy rate on campsites, with 70.9% of the pitches offered.

By tourist areas, Costa Brava was the preferred destination for camping, with more than 2.4 million overnight stays. The Parque Natural Aiguamolls de l'Empordà reached the highest occupancy rate, with 69.5% of the pitches offered.

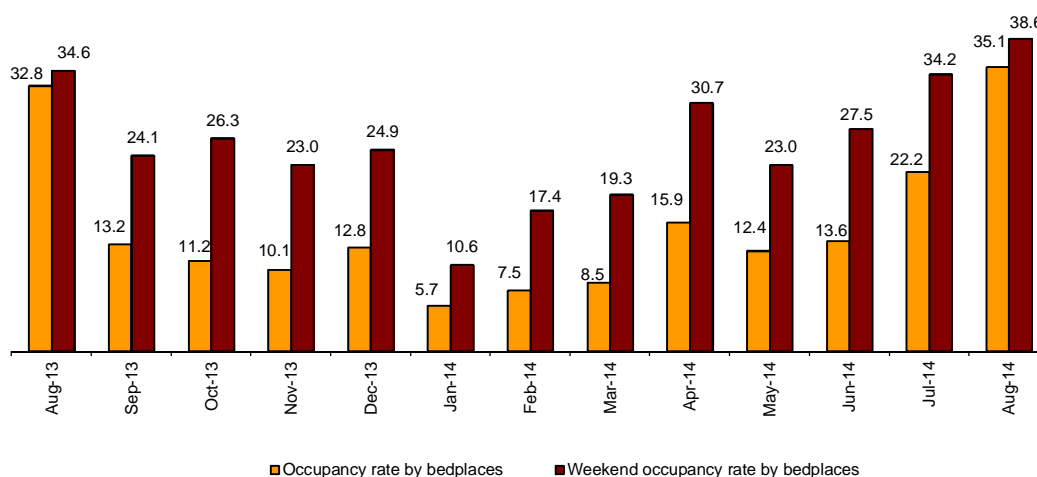
The tourist sites with the highest number of overnight stays were Torroella de Montgrí, Mont-Roig del Camp and Sant Pere Pescador.

### Rural Tourism Accommodation

Overnight stays in rural tourism accommodation presented an annual increase of 9.0% in August. Residents' overnight stays increased by 6.6% while those of non-residents did so by 17.7%. In the period between July and August, overnights increased by 10.2%.

Regarding rural tourism accommodation, 35.1% of the bedplaces were occupied, that is, a 7.1% increase as compared to August 2013. The weekend occupancy rate stood at 38.6%, with an increase of 11.5%.

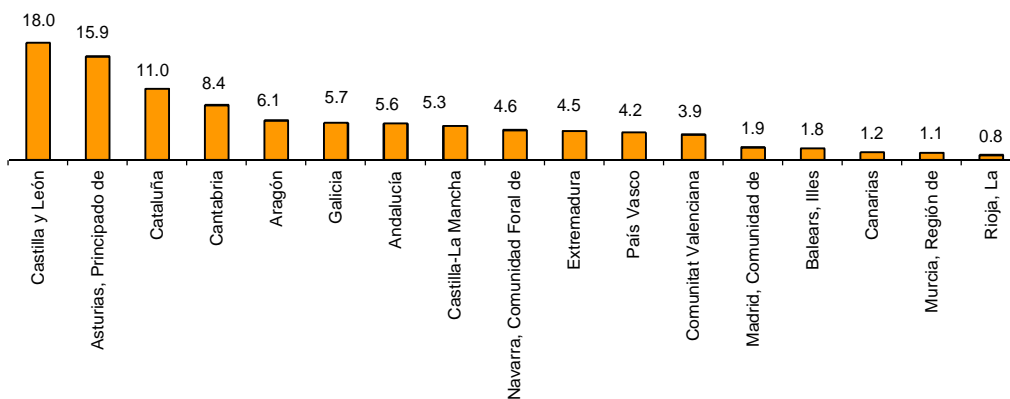
Occupancy rate by bedplaces and bedplaces on weekends



By Autonomous Community, Castilla y León was the preferred destination, with 247,431 overnight stays, 10.2% more than in August 2013. Illes Balears reached the highest occupancy rate, with 74.2% of the bedplaces offered.

By tourist area, the island of Mallorca was the main destination, with 111,477 overnight stays. The coast of Gipuzkoa reached the greatest occupancy rate, with 85.7% of the bedplaces offered.

Distribution of overnight stays of traveller residents by autonomous community of destination in %



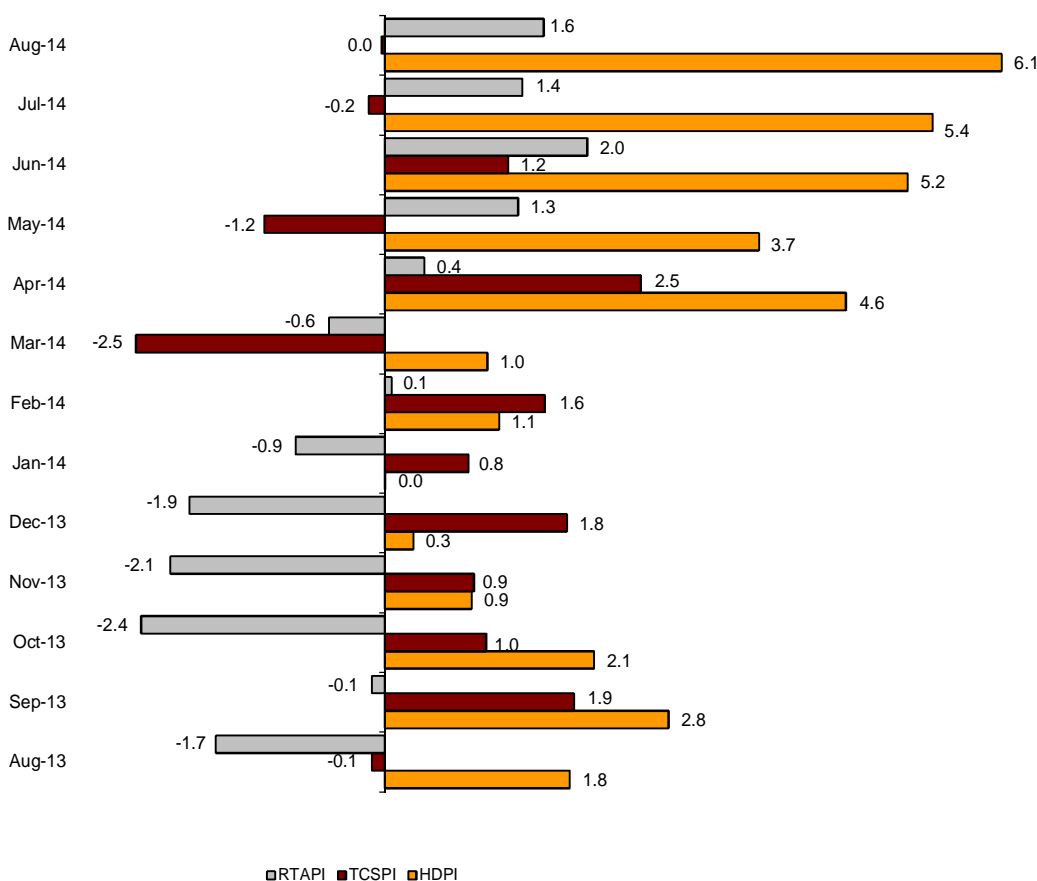
**Price Indices**

The Holiday Dwelling Price Index (HDPI) increased 6.1%, as compared to August 2013. The *tour operators and travel agencies* rate, which carried the greatest weight in the weighting structure for this month (47.9%), increased by 7.9%.

The Tourist Campsite Price Index (TCPI) remained unchanged in the annual rate. The *normal* rate, which had the greatest weight in the weighting structure for August (86.8%), decreased by 0.6%.

The Rural Tourism Accommodation Price Index (RTAPI) registered a 1.6% increase in August. The *normal* rate, which accounted for 62.6% of the total weight, increased by 1.7%.

**Price Indices. Annual variation rates**



## Evolution of travellers and overnight stays in all Spanish collective tourist accommodation

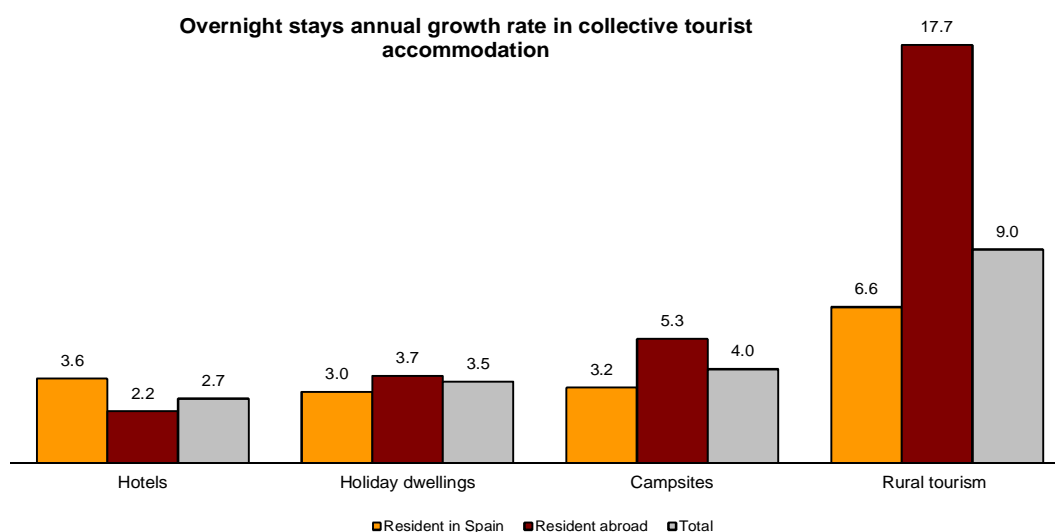
In August, overnight stays in Spanish collective tourist accommodation (hotels<sup>1</sup>, holiday dwellings, campsites and rural tourism accommodation) registered a 3.2% increase in its annual rate. Overnight stays of residents increased by 3.5%, while of non-residents did so by 2.9%.

In the aggregated period of July and August, the number of overnight stays increased by 1.4%. The average stay decreased 1.8% as compared to the same month of the previous year, standing at 4.4 overnight stays per traveller.

Travellers and overnight stays in collective tourist accommodation were:

August 2014	Holiday dwellings	Campsites	Rural T.	Non-hotel	Hotels	Total
<b>Travellers</b>	1,542,725	1,757,383	432,200	3,732,308	11,249,852	14,982,160
Residents	653,060	1,189,081	350,321	2,192,462	5,686,086	7,878,548
Non-residents	889,665	568,302	81,879	1,539,846	5,563,767	7,103,613
<b>Overnight stays</b>	11,244,259	9,651,605	1,662,134	22,557,998	43,038,904	65,596,902
Residents	3,924,110	5,986,155	1,267,675	11,177,940	16,443,828	27,621,768
Non-residents	7,320,149	3,665,451	394,459	11,380,059	26,595,076	37,975,135

Of the total overnight stays in collective tourist accommodation, 66% accounted for hotels, and 34% did so for non-hotel tourist accommodation.



The main countries of origin in overall regulated tourist accommodation were the United Kingdom (with 25.5% of the total number of non-resident overnight stays), Germany (20.7%) and France (14.9%).

Cataluña was the preferred destination, with more than 15.4 million overnight stays (3.9% over that registered in August 2013), followed by Illes Balears, with over 12.8 million overnight stays (2.3% less), and Canarias, with over 9.5 million overnight stays (6.7% more).

<sup>1</sup> The press release corresponding to Hotel Tourism Short-Term Trends was published on 23 September.

**Tourist Accommodation Occupancy Survey  
(Holiday Dwellings)**

August 2014 Provisional data

**1. Travellers, overnight stays and average stay by Autonomous Cities and Communities**

Autonomous Cities and Communities	Travellers			Overnight stays			Average stay
	Total	Residents in Spain	Residents abroad	Total	Residents in Spain	Residents abroad	
TOTAL	1,542,725	653,060	889,665	11,244,259	3,924,110	7,320,149	7.29
Andalucía	245,377	143,059	102,318	1,349,825	731,097	618,728	5.50
Aragón	19,869	16,754	3,115	84,901	74,090	10,812	4.27
Asturias, Principado de	12,644	11,994	650	66,016	63,131	2,886	5.22
Balears, Illes	300,231	43,494	256,738	2,256,979	282,305	1,974,674	7.52
Canarias	367,453	115,444	252,009	3,122,941	650,282	2,472,658	8.50
Cantabria	24,659	20,837	3,822	123,989	105,785	18,204	5.03
Castilla y León	15,693	14,467	1,226	51,526	48,771	2,755	3.28
Castilla - La Mancha	13,887	12,781	1,106	41,090	37,091	3,998	2.96
Cataluña	235,139	87,198	147,941	1,775,322	566,123	1,209,199	7.55
Comunitat Valenciana	212,471	116,902	95,569	1,847,472	966,252	881,221	8.70
Extremadura	6,412	5,788	624	19,071	17,529	1,542	2.97
Galicia	15,095	13,337	1,758	91,610	82,312	9,298	6.07
Madrid, Comunidad de	27,384	14,802	12,582	114,080	57,686	56,394	4.17
Murcia, Región de	25,710	21,336	4,375	218,234	178,257	39,977	8.49
Navarra, Comunidad Foral de	9,507	6,956	2,551	33,960	27,794	6,166	3.57
País Vasco	7,342	4,597	2,744	32,271	22,201	10,070	4.40
Rioja, La	3,851	3,314	537	14,972	13,406	1,566	3.89
Ceuta	-	-	-	-	-	-	-
Melilla	-	-	-	-	-	-	-
Annual rate	4.28	5.69	3.28	3.45	3.01	3.69	-0.80
Cumulative annual rate	4.22	3.60	4.55	3.87	1.47	4.66	-0.34

**2. Capacity, occupancy and number of staff by Autonomous Cities and Communities**

Autonomous Cities and Communities	Capacity		Level of occupancy				Employed personnel
	Estimated bedplaces	Estimated Holiday dwelling	Per bedplaces	Per bedplaces at weekend	Per Holiday dwelling	Per Holiday dwelling at weekend	
TOTAL	576,893	151,555	62.04	61.88	76.55	76.58	30,835
Andalucía	72,962	18,403	59.09	59.26	74.58	74.84	4,403
Aragón	6,638	1,555	41.09	40.47	52.24	52.28	492
Asturias, Principado de	4,401	1,202	48.02	45.03	56.53	53.59	382
Balears, Illes	93,688	28,598	75.10	74.77	88.58	88.09	7,089
Canarias	158,546	48,973	62.24	63.00	74.71	76.01	9,905
Cantabria	5,779	1,521	68.32	67.82	78.44	79.04	353
Castilla y León	4,980	1,080	33.22	37.30	49.07	53.48	421
Castilla - La Mancha	4,959	1,239	26.75	31.49	32.82	37.68	412
Cataluña	92,512	19,602	62.48	61.29	79.77	78.15	2,575
Comunitat Valenciana	102,225	20,851	58.09	56.76	74.55	72.81	3,019
Extremadura	1,782	428	33.94	36.61	41.14	44.81	187
Galicia	5,084	1,328	57.67	59.38	71.84	73.02	298
Madrid, Comunidad de	7,663	3,171	47.42	49.06	56.59	58.05	468
Murcia, Región de	10,529	2,337	66.85	66.38	76.74	76.86	350
Navarra, Comunidad Foral de	2,076	480	52.33	51.95	74.18	72.38	280
País Vasco	1,874	504	54.20	54.39	75.48	74.61	102
Rioja, La	1,195	282	40.26	43.99	51.29	53.73	102
Ceuta	-	-	-	-	-	-	-
Melilla	-	-	-	-	-	-	-
Annual rate	-0.75	-1.88	4.31	4.48	4.89	4.90	4.40
Cumulative annual rate	-0.46	-1.57	4.15	5.10	5.13	5.91	4.77

### 3. Travellers, overnight stays, capacity, occupancy, total number of staff with greater number of overnight stays \*

Provinces	Travellers		Overnight stays			Capacity		Level of occupancy			Employed personnel
	Residents in Spain	Residents abroad	Residents in Spain	Residents abroad	Average stay	Estimated bed-places	Estimated holiday dwelling	Per bed-places	Per Holiday dwelling	Per Holiday dwelling at weekend	
Palmas, Las	78,128	156,835	452,899	1,580,749	8.66	104,063	31,956	61.60	75.71	77.16	6,092
Santa Cruz de Tenerife	37,315	95,173	197,383	891,909	8.22	54,483	17,017	63.47	72.83	73.85	3,812
Alicante\Alacant	64,299	64,306	458,413	603,951	8.26	61,432	12,945	55.71	74.35	72.81	2,233
Girona	36,635	74,597	295,182	687,654	8.84	50,843	10,348	62.13	77.54	75.44	920
Málaga	52,264	73,126	258,339	499,986	6.05	38,924	9,683	62.58	81.41	81.16	2,524
Tarragona	31,609	46,265	184,520	400,903	7.52	29,224	5,806	65.12	86.79	85.37	887
Castellón\Castelló	31,575	13,809	291,049	136,961	9.43	23,244	4,331	58.76	74.78	72.47	429
Valencia\València	21,027	17,455	216,789	140,309	9.28	17,549	3,575	65.54	74.98	73.19	356
Almería	29,174	3,934	184,408	36,349	6.67	11,459	2,595	62.02	85.02	85.52	380
Barcelona	13,598	26,320	60,520	116,632	4.44	9,740	2,908	64.41	80.25	80.70	649
Cádiz	16,002	3,431	104,608	18,792	6.35	6,112	1,633	61.28	74.68	73.75	508
Huelva	17,785	1,031	84,786	4,856	4.76	4,162	968	69.00	72.54	72.44	76
Granada	12,972	5,857	50,273	17,528	3.60	4,642	1,256	46.73	51.54	52.93	365
Sevilla	7,470	13,877	22,552	37,869	2.83	4,269	1,413	44.86	55.38	57.58	317
Huesca	8,411	1,242	46,691	5,342	5.39	3,706	820	45.03	54.61	50.56	273

### 4. Travellers, overnight stays, capacity, occupancy, total number of staff from tourist areas with greater number of overnight stays

Tourist Areas	Travellers		Overnight stays			Capacity		Level of occupancy			Employed personnel
	Residents in Spain	Residents abroad	Residents in Spain	Residents abroad	Average stay	Estimated bed-places	Estimated holiday dwelling	Per bed-places	Per Holiday dwelling	Per Holiday dwelling at weekend	
Isla de Mallorca	7,452	141,439	46,509	1,159,113	8.10	46,722	14,798	79.97	92.15	91.65	3,731
Costa Blanca	63,707	63,268	453,892	592,847	8.24	59,714	12,561	56.47	75.34	73.73	2,182
Isla de Tenerife	27,889	91,336	144,652	857,848	8.41	48,257	14,832	65.95	76.03	77.00	3,328
Costa Brava	32,058	74,171	269,097	686,140	8.99	49,194	10,038	62.40	77.75	75.75	803
Isla de Lanzarote	18,468	72,939	113,685	741,826	9.36	38,895	11,276	68.18	84.79	84.82	2,608
Isla de Gran Canaria	48,128	60,022	273,266	569,306	7.79	48,100	15,455	55.96	67.17	70.21	2,560
Costa del Sol	48,946	70,466	248,889	480,919	6.11	36,608	9,152	64.04	82.89	82.44	2,424
Islas de Ibiza-Formentera	17,340	74,109	105,184	504,674	6.67	25,102	7,860	75.60	88.91	88.20	1,975
Costa Daurada	29,883	46,265	181,460	400,903	7.65	28,768	5,725	65.30	86.80	85.36	849
Isla de Menorca	18,701	41,190	130,612	310,887	7.37	21,863	5,941	64.17	79.30	79.14	1,383

### 5. Travellers, overnight stays, capacity, occupancy, total number of staff from tourist sites with greater number at overnights stays

Tourist sites	Travellers		Overnight stays			Capacity		Level of occupancy			Employed personnel
	Residents in Spain	Residents abroad	Residents in Spain	Residents abroad	Average stay	Estimated bed-places	Estimated holiday dwelling	Per bed-places	Per Holiday dwelling	Per Holiday dwelling at weekend	
San Bartolomé de Tirajana	31,002	38,488	194,392	359,322	7.97	31,097	10,057	56.87	68.80	72.22	1,656
Arona	7,387	37,205	44,122	382,936	9.58	20,109	6,222	67.61	76.02	75.96	1,376
Tías	11,030	34,473	67,654	353,967	9.27	19,107	6,030	66.81	82.19	82.47	1,072
Benidorm	17,325	27,573	114,966	253,842	8.21	19,250	4,667	61.73	74.57	73.51	1,073
Calvià	891	37,560	4,775	302,108	7.98	10,827	3,611	88.72	92.85	92.74	892
Adeje	5,279	30,327	29,065	277,353	8.61	14,986	4,242	65.03	77.57	77.86	987
Teguise	6,178	24,764	36,050	244,321	9.06	12,045	3,363	73.17	91.61	91.75	852
Mogán	15,809	20,798	69,357	203,783	7.46	15,672	4,836	55.73	66.09	68.27	806
Alcúdia	1,944	31,815	10,786	258,119	7.97	10,055	3,041	83.52	94.43	94.37	692
Salou	12,801	28,165	56,354	210,429	6.51	15,130	3,047	56.88	86.62	84.72	308

\* Provinces belonging to uniprovincial Autonomous Communities have not been included because they are reflected in previous tables.



## 6. Travellers and overnight stays by countries of residence

Countries	Travellers		Overnight stays	
	Total	%	Total	%
TOTAL	1,542,725	100.00	11,244,259	100.00
Residents in Spain	653,060	42.33	3,924,110	34.90
Residents abroad	889,665	57.67	7,320,149	65.10
Total residents abroad	889,665	100.00	7,320,149	100.00
Total residents in E.U (excluding Spain)	791,993	89.02	6,638,506	90.69
- Germany	114,956	12.92	1,008,504	13.78
- Austria	3,572	0.40	24,425	0.33
- Belgium	14,355	1.61	111,271	1.52
-Denmark	11,048	1.24	89,088	1.22
- Finland	3,449	0.39	17,627	0.24
- France	146,244	16.44	1,265,157	17.28
- Greece	697	0.08	3,355	0.05
- Ireland	34,481	3.88	307,802	4.20
- Italy	56,660	6.37	399,515	5.46
- Luxembourg	940	0.11	6,436	0.09
- Netherlands	46,491	5.23	444,351	6.07
- Poland	6,425	0.72	46,139	0.63
- Portugal	11,503	1.29	56,442	0.77
- United Kingdom	306,882	34.49	2,620,325	35.80
- Czech Republic	2,314	0.26	17,932	0.24
- Sweden	18,085	2.03	137,646	1.88
- Other EU countries	13,890	1.56	82,492	1.13
Norway	10,647	1.20	93,604	1.28
Russia	20,823	2.34	184,776	2.52
Switzerland	6,527	0.73	51,098	0.70
Other european countries	6,705	0.75	45,365	0.62
United States of America	8,511	0.96	34,740	0.47
Rest of America	9,079	1.02	47,638	0.65
African countries	15,864	1.78	134,673	1.84
Other countries	19,516	2.19	89,748	1.23

**Tourist Accommodation Occupancy Survey  
Campsite Occupancy Survey (COS)**

**August 2014**

Provisional data

**1. Travellers, overnight stays and average stay by category of establishment**

Category	Travellers			Overnight stays			Average stay
	Total	Residents in Spain	Residents abroad	Total	Residents in Spain	Residents abroad	
TOTAL	1,757,383	1,189,081	568,302	9,651,605	5,986,155	3,665,451	5.49
Luxury and first-class	787,451	506,732	280,719	4,682,241	2,588,374	2,093,867	5.95
Second-class	814,390	566,570	247,819	4,211,128	2,805,861	1,405,266	5.17
Third-class	155,543	115,779	39,764	758,236	591,919	166,317	4.87
Annual rate	4.34	2.71	7.93	3.96	3.19	5.25	-0.36
Cumulative annual rate	3.60	3.50	3.82	2.14	5.45	-1.56	-1.41

**2. Open establishments, capacity, occupancy and number of staff by category of establishments**

Category	Estimated open establishments	Capacity		Occupied pitches	Occupancy rate per pitch	Weekend occupancy rate	Employed personnel
		Estimated bedplaces	Estimated pitches				
TOTAL	1,175	752,699	230,017	3,713,823	52.08	54.45	11,421
Luxury and first-class	300	320,577	94,392	1,634,124	55.85	57.42	5,398
Second-class	636	355,623	111,843	1,748,033	50.42	53.82	5,019
Third-class	239	76,499	23,782	331,666	44.99	45.64	1,005
Annual rate	0.34	0.67	0.55	3.56	3.00	3.54	0.38
Cumulative annual rate	-1.62	-2.45	-2.21	1.15	3.51	3.41	-0.57

**3. Travellers, overnight stays and average stay by Autonomous Cities and Communities**

Autonomous cities and communities	Travellers			Overnight stays			Average stay
	Total	Residents in Spain	Residents abroad	Total	Residents in Spain	Residents abroad	
TOTAL	1,757,383	1,189,081	568,302	9,651,605	5,986,155	3,665,451	5.49
Andalucía	225,543	187,153	38,389	884,852	742,183	142,668	3.92
Aragón	101,904	70,125	31,779	376,235	280,379	95,856	3.69
Asturias, Principado de	74,232	55,118	19,113	324,086	273,919	50,167	4.37
Balears, Illes	11,886	6,560	5,326	63,023	25,892	37,131	5.30
Canarias	5,031	4,638	393	20,920	18,120	2,800	4.16
Cantabria	78,801	56,215	22,586	448,854	368,382	80,472	5.70
Castilla y León	77,195	55,823	21,372	246,506	209,480	37,026	3.19
Castilla - La Mancha	23,113	20,479	2,634	81,780	76,895	4,885	3.54
Cataluña	697,845	379,133	318,712	4,968,761	2,255,377	2,713,384	7.12
Comunitat Valenciana	159,346	126,685	32,661	1,041,827	746,372	295,455	6.54
Extremadura	31,770	28,982	2,787	102,639	96,735	5,904	3.23
Galicia	103,163	75,045	28,118	389,636	321,761	67,875	3.78
Madrid, Comunidad de	36,907	31,814	5,093	142,784	131,809	10,975	3.87
Murcia, Región de	19,764	16,443	3,321	123,957	98,116	25,841	6.27
Navarra, Comunidad Foral de	31,923	25,476	6,447	129,179	115,281	13,898	4.05
País Vasco	49,988	23,682	26,306	171,144	94,597	76,547	3.42
Rioja, La	28,973	25,709	3,264	135,423	130,856	4,567	4.67
Ceuta	-	-	-	-	-	-	-
Melilla	-	-	-	-	-	-	-

#### 4. Open establishments, capacity, occupancy and number of staff by autonomous cities and communities

Autonomous cities and communities	Estimated open establishments	Capacity		Occupied pitches	Occupancy rate per pitch	Weekend occupancy rate	Employed personnel
		Estimated bedplaces	Estimated pitches				
TOTAL	1,175	752,699	230,017	3,713,823	52.08	54.45	11,421
Andalucía	146	82,940	26,761	336,299	40.54	45.51	1,306
Aragón	94	32,339	9,654	144,141	48.16	46.49	525
Asturias, Principado de	54	27,738	8,510	123,075	46.66	53.85	412
Balears, Illes	8	3,177	1,290	18,834	47.10	47.06	115
Canarias	7	7,336	1,686	10,370	19.84	22.49	30
Cantabria	48	35,545	10,848	178,655	53.13	56.12	375
Castilla y León	107	43,615	13,764	122,451	28.70	30.90	440
Castilla - La Mancha	28	10,765	3,114	37,316	38.65	49.58	125
Cataluña	344	321,090	95,605	1,772,829	59.82	61.55	5,067
Comunitat Valenciana	110	73,462	23,061	431,245	60.32	61.02	1,246
Extremadura	28	10,867	3,392	45,700	43.46	48.22	214
Galicia	108	37,668	12,083	144,813	38.66	42.03	587
Madrid, Comunidad de	21	17,772	5,967	105,368	56.96	57.13	251
Murcia, Región de	18	15,035	4,975	53,242	34.52	37.89	219
Navarra, Comunidad Foral de	23	13,277	3,340	63,784	61.61	62.68	185
País Vasco	24	11,991	3,519	71,900	65.91	67.25	246
Rioja, La	9	8,083	2,449	53,801	70.87	70.76	78
Ceuta	-	-	-	-	-	-	-
Melilla	-	-	-	-	-	-	-

#### 5. Travellers and overnight stays, average stay, capacity, occupancy and number of staff by provinces with the greatest number of overnight stays\*

Provinces	Travellers		Overnight stays		Average stay	Estimated open establishments	Estimated pitches	Occupancy rate per pitch	Employed personnel
	Residents in Spain	Residents abroad	Residents in Spain	Residents abroad					
	Girona	142,180	196,530	763,266					
Tarragona	124,118	65,875	917,608	585,567	7.91	65	25,942	58.21	986
Barcelona	74,571	47,728	394,077	281,339	5.52	77	16,641	60.06	643
Alicante\Alacant	41,254	12,829	246,287	181,769	7.91	36	9,768	61.28	520
Castellón\Castelló	39,617	11,268	292,467	73,929	7.20	40	6,888	61.37	356
Huesca	55,075	24,875	233,320	79,760	3.92	63	7,010	55.50	410
Cádiz	68,539	10,907	259,913	36,256	3.73	31	7,214	46.78	393
Valencia\València	45,814	8,563	207,619	39,757	4.55	34	6,404	57.73	371
Pontevedra	43,896	16,042	190,641	42,662	3.89	42	6,035	42.79	304
Lleida	38,264	8,579	180,425	22,496	4.33	60	8,016	44.99	308
Málaga	26,663	9,083	119,934	53,062	4.84	30	4,868	47.93	238
Huelva	38,032	2,435	159,927	8,521	4.16	12	5,067	44.38	209
Coruña. A	23,491	9,824	111,188	20,795	3.96	47	4,491	36.04	195
Gipúzkoa	16,554	19,347	61,079	59,218	3.35	15	2,259	62.07	124
Almería	17,303	2,998	75,110	12,579	4.32	18	2,656	38.83	136

\* Provinces belonging to uniprovincial Autonomous Communities have not been included because they are reflected in previous tables.

## 6. Travellers, overnight stays, average stay, open establishments, capacity, occupancy and number of staff from tourist areas with the greatest number of overnight stays

Tourist areas	Travellers		Overnight stays		Average stay	Estimated open establishments	Estimated pitches	Occupancy rate per pitch	Employed personnel
	Residents in	Residents abroad	Residents in	Residents abroad					
	Spain		Spain						
Costa Brava	118,864	193,410	647,714	1,811,630	7.88	106	41,021	64.25	2,932
Costa Daurada	106,975	59,075	818,339	535,048	8.15	51	23,146	57.86	874
P.N. Aiguamolls de l'Empordá	23,977	57,288	127,544	548,479	8.32	22	10,308	69.48	953
Costa Barcelona	44,069	43,477	275,055	271,216	6.24	39	12,398	61.05	449
Costa Blanca	35,865	11,170	210,566	165,105	7.99	28	7,547	66.76	456
Pirineus	76,499	11,009	330,459	33,533	4.16	100	12,400	53.29	515
Costa de Castellón	35,805	9,632	277,448	66,127	7.56	31	6,116	63.31	329
Pirineo Aragonés	55,584	23,190	235,553	78,647	3.99	59	6,734	56.36	412
Costa de la Luz de Cádiz	66,243	10,580	253,107	34,638	3.75	25	6,449	49.91	369
Costa Verde	46,406	17,109	244,208	43,312	4.53	45	7,392	47.95	360
Rías Baixas	55,671	16,981	227,875	43,312	3.73	56	7,685	39.57	402
Costa Valencia	33,311	8,323	162,187	41,429	4.89	19	4,543	59.50	282
Costa del Sol	22,022	6,905	107,715	45,433	5.29	14	3,559	57.28	174
Terres de l'Ebre	17,143	6,801	99,269	50,518	6.26	14	2,795	61.17	112
Costa de la Luz de Huelva	32,755	2,297	136,761	7,928	4.13	7	4,339	43.81	167

## 7. Travellers, overnight stays, average stay, open establishments, capacity, occupancy and number of staff from tourist sites with the greatest number at overnights stays

Tourist sites	Travellers		Overnight stays		Average stay	Estimated open establishments	Estimated pitches	Occupancy rate per pitch	Employed personnel
	Residents in	Residents abroad	Residents in	Residents abroad					
	Spain		Spain						
Torroella De Montgrí	8,007	29,572	34,787	331,153	9.74	9	4,883	78.24	416
Mont-Roig Del Camp	21,867	8,645	167,015	149,004	10.36	6	4,177	50.27	77
Sant Pere Pescador	7,421	24,405	28,774	225,665	7.99	7	3,722	71.61	400
Pals	9,647	13,262	70,903	156,440	9.92	5	3,053	66.37	244
Castelló D'Empúries	5,828	18,467	39,930	179,089	9.01	5	3,432	71.46	355
Blanes	8,887	13,778	73,233	131,232	9.02	12	3,723	67.03	195
Calonge	7,127	11,357	58,169	129,962	10.18	4	2,494	76.65	151
Salou	13,913	10,649	77,032	110,063	7.62	3	2,507	52.04	61
Castell-Platja D'Aro	11,874	13,129	49,056	130,799	7.19	6	4,286	49.03	160
Tarragona	19,264	8,694	132,588	37,900	6.10	7	2,898	76.26	32
Benidorm	7,043	4,958	41,269	116,649	13.16	9	3,758	67.94	160
Escala (L)	8,666	8,882	47,855	89,947	7.85	6	2,330	58.97	132

## 8. Travellers and overnight stays by countries of residence

Countries	Travellers		Overnight stays	
	Total	%	Total	%
TOTAL	1,757,383	100.00	9,651,605	100.00
Residents in Spain	1,189,081	67.66	5,986,155	62.02
Residents abroad	568,302	32.34	3,665,451	37.98
TOTAL residents abroad	568,302	100.00	3,665,451	100.00
TOTAL residents in E.U. (excluding Spain)	548,960	96.60	3,598,149	98.16
- Germany	79,390	13.97	421,073	11.49
- Austria	2,618	0.46	6,957	0.19
- Belgium	21,813	3.84	159,389	4.35
- Denmark	1,501	0.26	7,441	0.20
- Finland	288	0.05	1,491	0.04
- France	228,975	40.29	1,346,326	36.73
- Greece	213	0.04	665	0.02
- Ireland	5,448	0.96	34,795	0.95
- Italy	46,310	8.15	183,721	5.01
- Luxembourg	1,206	0.21	5,111	0.14
- Netherlands	76,973	13.54	942,869	25.72
- Poland	5,137	0.90	15,322	0.42
- Portugal	26,325	4.63	74,272	2.03
- United Kingdom	45,346	7.98	376,636	10.28
- Czech Republic	2,068	0.36	5,637	0.15
- Sweden	972	0.17	5,649	0.15
- Other EU countries	4,379	0.77	10,794	0.29
Norway	378	0.07	2,037	0.06
Russia	668	0.12	1,890	0.05
Switzerland	5,403	0.95	23,709	0.65
Other European countries	3,144	0.55	12,606	0.34
United States of America	764	0.13	1,795	0.05
Rest of America	2,200	0.39	5,701	0.16
African countries	699	0.12	1,733	0.05
Other countries	6,086	1.07	17,832	0.49

\* Non-significant data

**Tourist accommodation occupancy survey  
(Rural tourist accommodation)**

**August 2014**

Provisional data

**1. Number of travellers, overnight stays and average stay by Autonomous City and Community**

Autonomous Communities	Number of travellers			Number of overnight stays			Average stay
	Total	Residents In Spain	Residents abroad	Total	Residents In Spain	Residents abroad	
<b>TOTAL</b>	<b>432,200</b>	<b>350,321</b>	<b>81,879</b>	<b>1,662,133</b>	<b>1,267,675</b>	<b>394,459</b>	<b>3.85</b>
Andalucía	27,224	18,569	8,655	131,433	71,117	60,316	4.83
Aragón	18,834	15,614	3,220	94,521	77,339	17,182	5.02
Asturias, Principado de	52,229	48,564	3,665	216,657	201,835	14,823	4.15
Balears, Illes	29,340	5,279	24,061	139,468	22,333	117,135	4.75
Canarias	5,231	3,109	2,122	30,185	14,579	15,606	5.77
Cantabria	36,381	32,435	3,946	119,120	107,000	12,120	3.27
Castilla y León	74,849	68,124	6,725	247,431	228,656	18,775	3.31
Castilla-La Mancha	20,797	20,261	536	68,603	66,617	1,986	3.30
Cataluña	46,640	34,029	12,612	227,214	138,930	88,284	4.87
Comunitat Valenciana	15,508	13,675	1,833	60,034	49,476	10,558	3.87
Extremadura	19,442	18,744	698	59,347	56,866	2,482	3.05
Galicia	32,853	26,920	5,933	85,650	72,474	13,175	2.61
Madrid, Comunidad de	12,732	11,887	844	26,511	24,386	2,125	2.08
Murcia, Región de	4,281	3,885	395	15,520	14,358	1,162	3.63
Navarra, Comunidad Foral de	14,729	11,716	3,014	65,749	58,285	7,464	4.46
País Vasco	18,090	14,698	3,392	64,669	53,852	10,817	3.57
Rioja, La	3,040	2,813	228	10,022	9,571	450	3.30
Ceuta	-	-	-	-	-	-	-
Melilla	-	-	-	-	-	-	-
Annual rate	13.61	11.84	21.85	9.02	6.59	17.66	-4.04
Cumulative annual rate	11.66	11.34	13.17	10.09	9.97	10.43	-1.41

**2. Open rural establishments, bed-places, occupancy rates and employed personnel by Autonomous City and Community**

Autonomous Communities	Estimated open rural establishments	Estimated bed-places	Occupancy rate			Employed personnel
			Of bed-places	Of bed-places at weekend	Of bedrooms	
<b>TOTAL</b>	<b>15,991</b>	<b>150,947</b>	<b>35.10</b>	<b>38.62</b>	<b>41.96</b>	<b>24,431</b>
Andalucía	1,629	13,844	30.42	34.39	39.02	2,344
Aragón	1,199	9,267	32.56	33.41	38.59	1,307
Asturias, Principado de	1,465	13,900	49.92	44.78	57.85	2,069
Balears, Illes	313	5,907	74.21	71.11	80.71	2,022
Canarias	601	3,692	26.31	25.60	37.95	852
Cantabria	422	7,529	49.77	51.01	54.85	870
Castilla y León	3,486	30,804	25.72	32.73	31.68	4,979
Castilla-La Mancha	1,425	12,229	18.01	26.46	22.59	1,992
Cataluña	2,004	16,220	44.79	44.20	54.06	2,630
Comunitat Valenciana	916	9,381	20.59	25.38	30.16	1,569
Extremadura	546	6,591	28.95	42.95	32.23	859
Galicia	558	7,013	38.77	42.51	41.48	995
Madrid, Comunidad de	245	3,808	22.33	34.52	27.57	513
Murcia, Región de	115	1,764	28.15	33.03	33.62	182
Navarra, Comunidad Foral de	662	4,837	43.26	45.23	52.89	756
País Vasco	295	3,148	63.90	65.36	69.11	370
Rioja, La	111	1,014	31.48	39.69	33.19	123
Ceuta	-	-	-	-	-	-
Melilla	-	-	-	-	-	-
Annual rate	1.84	1.93	7.12	11.47	7.41	5.42
Cumulative annual rate	0.77	0.96	9.28	11.50	10.78	2.13

### 3. Number of travellers, overnight stays and average stay in Provinces with the greatest number of overnight stays<sup>1</sup>

Provinces	Number of travellers			Number of overnight stays			Average stay
	Total	Residents In Spain	Residents abroad	Total	Residents In Spain	Residents abroad	
Girona	19,725	12,770	6,955	99,530	53,931	45,598	5.05
Huesca	11,847	9,210	2,637	61,922	47,123	14,799	5.23
Barcelona	10,512	7,182	3,330	54,825	29,879	24,946	5.22
Málaga	8,015	3,766	4,249	54,234	16,940	37,294	6.77
Cáceres	16,411	15,878	533	52,022	50,001	2,021	3.17
Lleida	11,687	10,986	702	49,749	44,306	5,442	4.26
Ávila	11,256	10,867	389	44,936	42,573	2,363	3.99
León	16,006	14,187	1,819	44,825	41,279	3,546	2.80
Gipúzkoa	10,807	8,888	1,919	40,249	34,142	6,107	3.72
Salamanca	10,872	10,179	693	38,351	36,250	2,101	3.53
Coruña, A	12,248	9,657	2,591	31,321	26,543	4,778	2.56
Burgos	7,976	6,133	1,844	28,384	23,955	4,428	3.56
Albacete	6,923	6,889	34	28,261	28,158	103	4.08
Soria	7,303	7,083	220	26,395	25,530	866	3.61
Castellón\Castelló	6,443	6,000	444	24,865	21,572	3,292	3.86

### 4. Open rural establishments, bed-places, occupancy rates and employed personnel in Provinces with the highest number of overnight stays<sup>1</sup>

Provinces	Estimated open rural establishments	Estimated bed-places	Occupancy rate			Employed personnel
			Of bed-places	Of bed-places at weekend	Of bedrooms	
Girona	686	5,825	54.55	53.51	65.24	944
Huesca	648	4,752	41.55	40.74	47.34	688
Barcelona	484	4,157	42.31	42.49	51.48	687
Málaga	678	4,372	39.64	40.80	53.68	794
Cáceres	456	5,540	30.19	44.14	33.63	710
Lleida	578	4,073	38.94	39.44	46.44	716
Ávila	787	5,693	25.27	37.29	33.12	1,200
León	503	4,533	31.46	33.90	35.58	752
Gipúzkoa	149	1,657	75.17	74.16	82.85	203
Salamanca	516	4,135	29.75	38.56	36.34	691
Coruña, A	162	1,999	49.09	50.52	49.18	274
Burgos	372	3,916	23.24	28.42	29.47	467
Albacete	587	3,583	25.24	32.92	28.99	865
Soria	326	3,004	28.06	35.32	31.70	420
Castellón\Castelló	438	3,877	20.64	27.09	30.61	592

<sup>1</sup> Provinces belonging to uniprovincial Autonomous Communities have not been included because they are reflected in previous tables.

### 5. Number of travellers, overnight stays, average stay, capacity and occupancy rates in areas with the highest number of overnight stays

Areas	Number of travellers		Number of overnight stays		Average stay	Capacity		Occupancy rate		
	Residents In Spain	Residents abroad	Residents In Spain	Residents abroad		Estimated open rural establishments	Estimated bed-places	Of bed-places	Of bed-places at weekend	Of bedrooms
Isla de Mallorca	2,814	20,411	11,887	99,590	4.80	257	4,770	73.34	70.03	80.48
Costa Verde	21,208	1,441	95,186	6,188	4.48	523	5,618	57.61	50.38	66.41
Pirineus	15,651	3,072	63,503	19,030	4.41	820	6,200	42.61	43.07	50.36
Costa Brava	7,340	5,262	30,901	37,692	5.44	401	3,647	59.92	57.84	70.40
Pirineo Navarro	11,702	2,773	60,912	6,891	4.68	599	4,304	50.01	51.70	61.14
Pirineo Aragonés	9,138	2,580	45,935	13,789	5.10	595	4,417	43.08	42.26	48.45
P.Nacional Picos de Europa	9,319	906	37,019	2,921	3.91	248	2,389	53.68	40.34	59.28
Rías Baixas	6,772	1,752	20,930	5,598	3.11	143	1,767	47.74	50.68	52.46
Catalunya Central	3,463	1,580	15,816	10,543	5.23	285	2,345	36.20	37.16	45.14
Pirineo Vasco	3,553	772	14,719	2,299	3.93	95	977	54.74	55.23	58.22
Costa de Gipuzkoa	3,882	665	14,412	2,413	3.70	51	605	85.74	82.87	98.15
Costa Daurada	1,635	1,128	6,376	9,588	5.78	174	1,481	34.67	30.81	42.93
Isla de Menorca	1,828	1,753	7,473	7,317	4.13	29	597	78.69	72.93	84.01
Islas de Ibiza-Formentera	637	1,898	2,973	10,228	5.21	28	540	77.00	78.65	79.11
Terres de Lleida	2,721	209	10,569	2,263	4.38	141	1,011	40.58	40.60	50.90

### 6. Number of travellers, overnight stays, average stay, capacity, occupancy rates and employed personnel per rural house by Autonomous City and Community<sup>2</sup>

Autonomous Communities	Number of travellers		Number of overnight stays		Average stay	Capacity		Occupancy rate		Employed personnel
	Residents In Spain	Residents abroad	Residents In Spain	Residents abroad		Estimated open rural establish.	Estimated bed-places	Of bed-places	Of bed-places at weekends	
TOTAL	198,736	44,651	809,690	249,718	4.35	13,313	104,713	32.32	35.71	17,615
Andalucía	18,569	8,655	71,117	60,316	4.83	1,629	13,844	30.42	34.39	2,344
Aragón	10,732	2,372	47,300	12,960	4.60	901	6,871	27.98	29.26	985
Asturias, Principado de	15,107	1,244	78,920	7,872	5.31	947	5,992	46.54	41.24	1,095
Balears, Illes	1,484	5,537	4,908	20,337	3.60	77	1,069	72.34	66.14	255
Canarias	1,523	1,194	10,977	10,933	8.06	575	2,939	23.99	21.73	717
Cantabria	6,057	488	29,647	3,118	5.01	140	2,052	50.92	45.07	238
Castilla y León	32,891	1,431	151,694	9,088	4.68	2,964	19,982	25.80	32.32	3,681
Castilla-La Mancha	19,413	527	64,016	1,971	3.31	1,395	11,611	18.25	26.84	1,945
Cataluña	34,029	12,612	138,930	88,284	4.87	2,004	16,220	44.79	44.20	2,630
Comunitat Valenciana	9,811	1,704	35,037	10,054	3.92	876	6,970	20.81	25.88	1,423
Extremadura	8,568	393	24,250	1,409	2.86	332	3,194	25.78	39.86	438
Galicia	17,065	3,714	49,582	9,360	2.84	407	4,834	38.68	40.48	621
Madrid, Comunidad de	481	130	2,548	965	5.75	65	562	20.13	36.42	78
Murcia, Región de	2,709	198	12,645	820	4.63	103	1,464	29.38	34.55	139
Navarra, Comunidad Foral de	11,716	3,014	58,285	7,464	4.46	662	4,837	43.26	45.23	756
País Vasco	5,770	1,211	20,261	4,318	3.52	125	1,258	60.15	63.75	148
Rioja, La	2,813	228	9,571	450	3.30	111	1,014	31.48	39.69	123
Ceuta	-	-	-	-	-	-	-	-	-	-
Melilla	-	-	-	-	-	-	-	-	-	-

<sup>2</sup> To facilitate the comparability between data from different Autonomous Communities (and because of the different regulation and different characteristics), a group called rural house has been created, with those establishments with similar typology (location, capacity, etc...). The variables included in the previous table have been estimated with that type of establishments.



## 7. Travellers and overnight stays by country of residence

Results by countries	Travellers		Overnight stays	
	Total	%	Total	%
TOTAL	432,200	100.00	1,662,133	100.00
Residents Spain	350,321	81.06	1,267,675	76.27
Residents abroad	81,879	18.94	394,459	23.73
Total Residents abroad	81,879	100.00	394,459	100.00
Total Residents in EU (excluding Spain)	71,538	87.37	364,783	92.48
- Germany	17,725	21.65	101,856	25.82
- Belgium	4,810	5.88	31,444	7.97
- France	19,425	23.72	104,170	26.41
- Italy	4,835	5.90	13,489	3.42
- Netherlands	4,300	5.25	23,784	6.03
- Portugal	1,563	1.91	3,988	1.01
- United Kingdom	14,426	17.62	67,797	17.19
Switzerland	1,655	2.02	7,041	1.78
Other European countries	6,517	7.96	23,831	6.04
United States of America	2,389	2.92	6,264	1.59
Other countries	4,233	5.17	10,796	2.74

## HOLIDAY DWELLING PRICE INDEX (HDPI)

August 2014

Provisional data

### National general index and breakdown by rates

	Index	Annual variation rate
TOTAL	144.26	6.10
Normal	133.28	4.30
Weekend	128.94	5.97
Tour-operators and travel agencies	157.81	7.89

### National general index and breakdown by modalities

	Index	Annual variation rate
TOTAL	144.26	6.10
Studio	148.70	4.29
Dwellings 2/4 bedplaces	143.90	6.10
Dwellings 4/6 bedplaces	143.54	6.77

## Tourist Campsite Price Index (TCSPI). 2002 Base

August 2014

Provisional data

### National general index and breakdown by rates

	Index	Annual variation rate
TOTAL	151.25	-0.03
Normal rate	152.06	-0.62
Special rate for stays up to one month	116.56	9.54
Special rate for stays longer than one month	158.37	3.25

### National general index and breakdown by categories

	Index	Annual variation rate
TOTAL	151.25	-0.03
Luxury and first	157.78	-0.11
Second	146.34	0.08
Third	147.04	-0.16

## Rural Tourism Accommodation Price Index (RTAPI)

August 2014

Provisional data

### General Autonomous Cities and Communities and national indices

	Index	Annual variation rate
<b>TOTAL</b>	<b>130.00</b>	<b>1.57</b>
Andalucía	126.56	0.91
Aragón	144.82	4.87
Asturias, Principado de	113.38	-5.78
Balears, Illes	139.05	1.78
Canarias	110.99	-2.41
Cantabria	125.95	5.08
Castilla y León	123.34	2.69
Castilla - La Mancha	119.89	2.22
Cataluña	138.57	1.63
Comunitat Valenciana	121.58	1.19
Extremadura	104.61	3.78
Galicia	121.69	5.23
Madrid, Comunidad de	137.38	1.61
Murcia, Región de	154.40	-0.51
Navarra, Comunidad Foral de	176.75	1.19
País Vasco	133.95	4.59
Rioja, La	132.10	9.22
Ceuta	-	-
Melilla	-	-

### National general index and breakdown by rates

	Index	Annual variation rate
<b>TOTAL</b>	<b>130.00</b>	<b>1.57</b>
Normal	130.84	1.73
Weekend	129.55	1.30

### National general index and breakdown by rent modality

	Index	Annual variation rate
<b>TOTAL</b>	<b>130.00</b>	<b>1.57</b>
Shared use (in case of per room rent modality)	126.24	1.27
Full use (rent of entire dwelling)	131.59	1.72